

SEL0629 - Aplicação de Microprocessadores I

Aula 4

Mikro C for PIC e Kit EasyPIC v7

Marcelo Andrade da Costa Vieira



Exemplo prático – Uso no Mikro C Pro for PIC

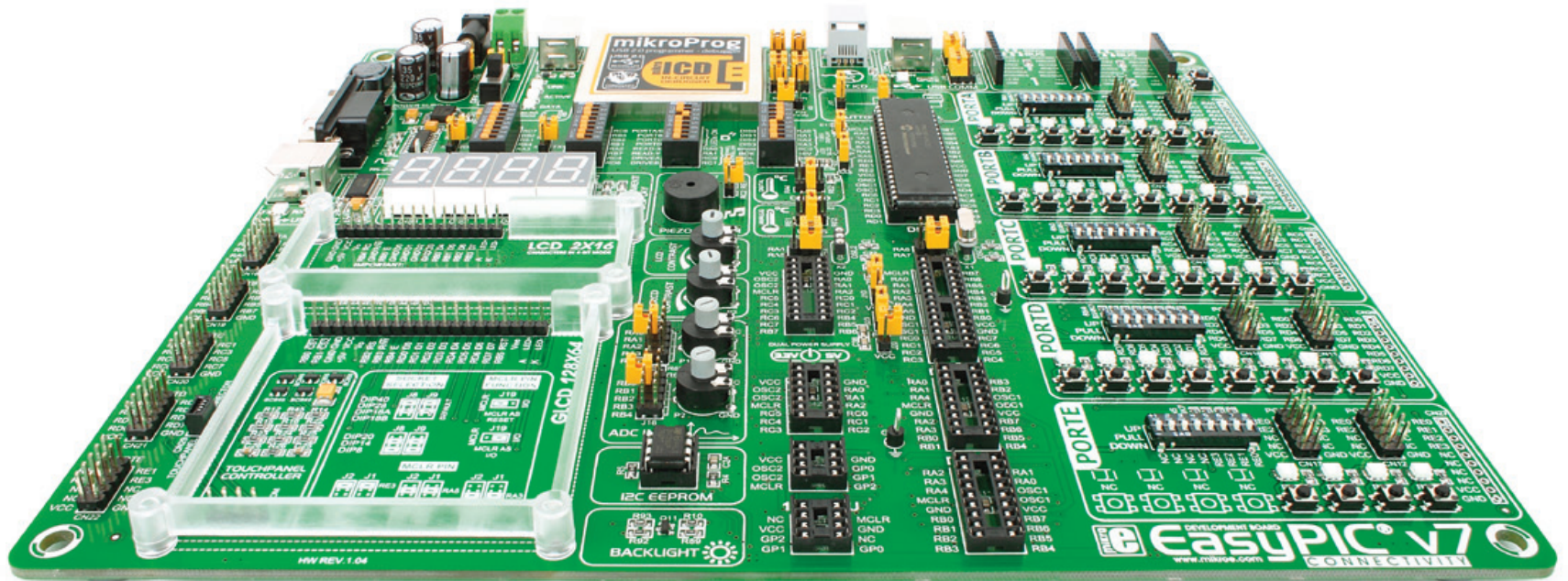


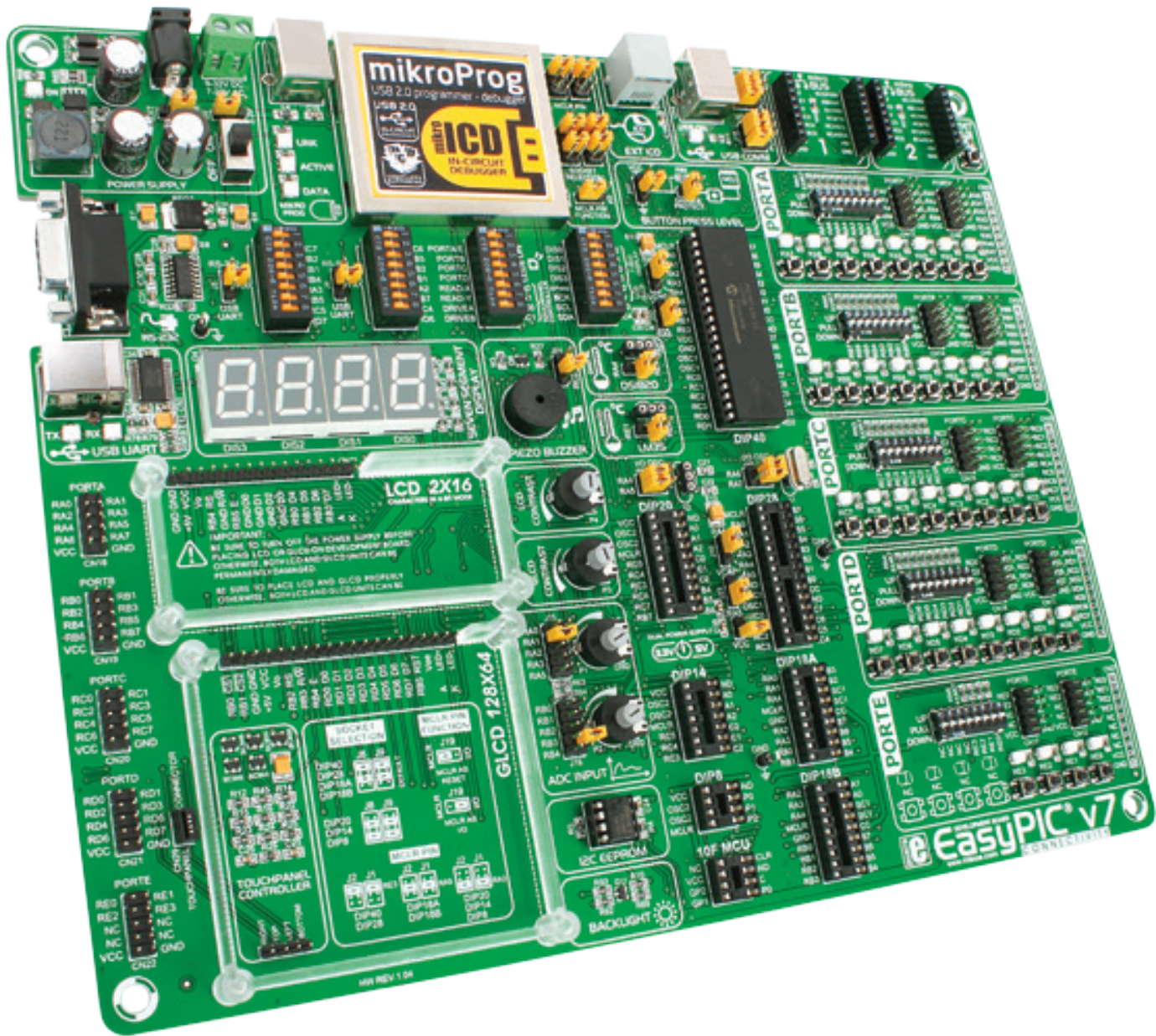
**Kit de Desenvolvimento
EasyPIC v.7
Mikroelektronica**



EasyPIC™ v7 connectivity

USER'S GUIDE





Alimentação

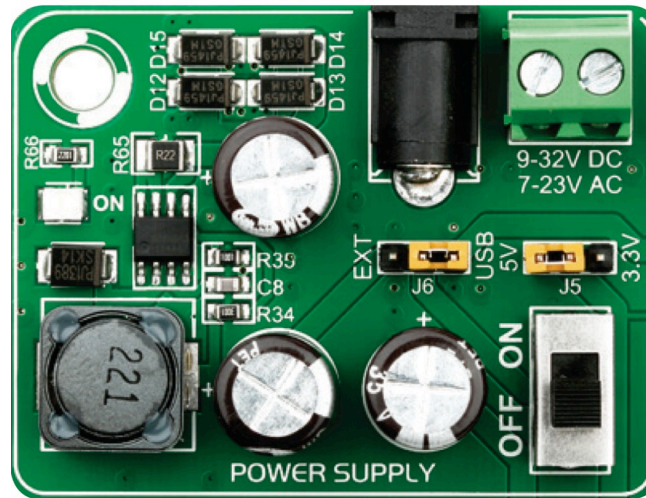
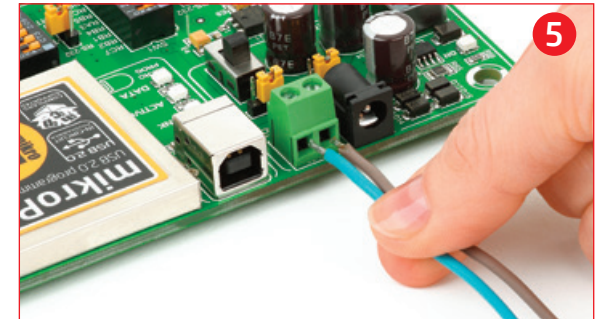
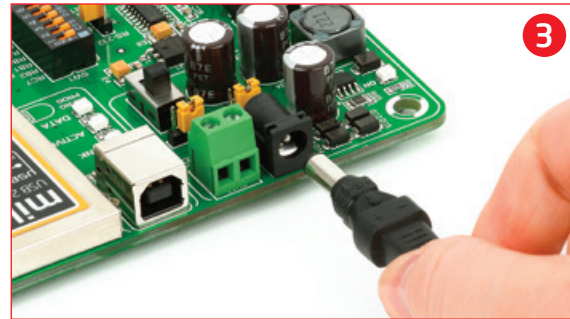
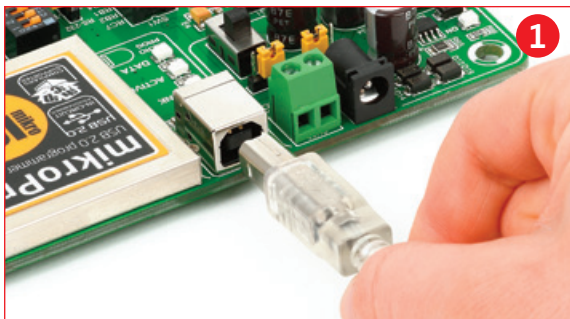
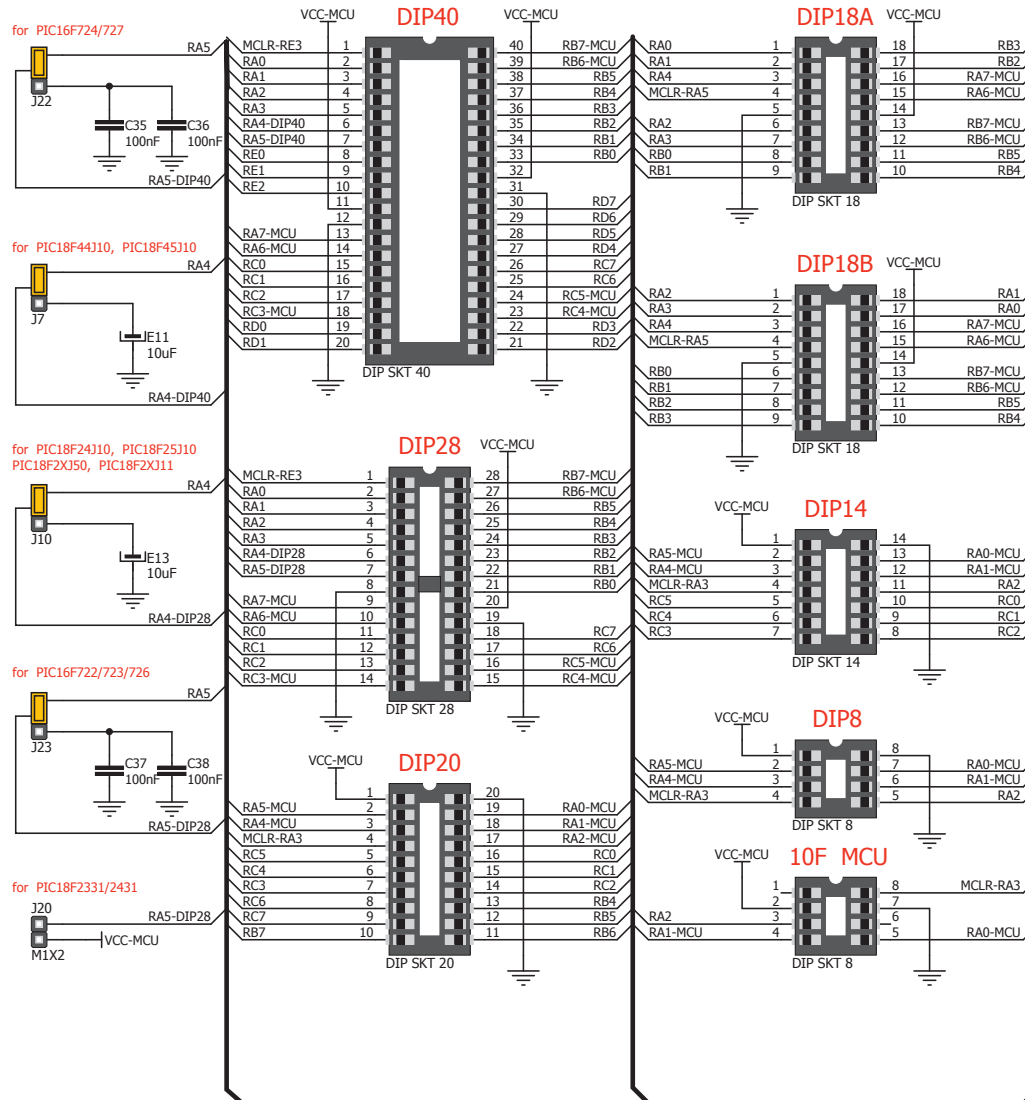


Figure 3-1: Dual power supply unit of EasyPIC™ v7



Microcontroladores



Gravação On-Board



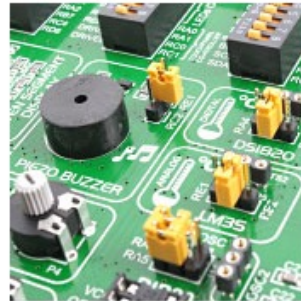
Periféricos



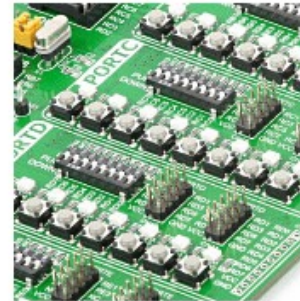
Special metal casing protects programmer module, and looks awesome, too.



ICD2 connector enables users to work with other programmers.



Now you have them both: digital and analog temperature sensors.



Why didn't we think of this earlier? Ports are grouped with their buttons and LEDs



Write UART applications for laptops too. Besides RS-232, we also added USB-UART.



It's loaded with new modules: buzzer, LM35 temp sensor, I2C EEPROM and more...



It's back! 4 digit 7 segment display is now a part of EasyPIC v7.



Every available PIC device in DIP packaging can fit on EasyPIC v7.



GLCD 128x64 and LCD 2x16 character displays are now closer together.



We added three additional GND pins for easier access of your oscilloscope probes.



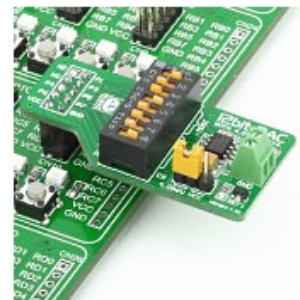
Special plastic GLCD and LCD holders make sure that your displays securely fit in place.



Another row of PORT headers available on the left side. Connectivity at its best.



Dual switching power supply allows the board to support both 3.3V and 5V devices.



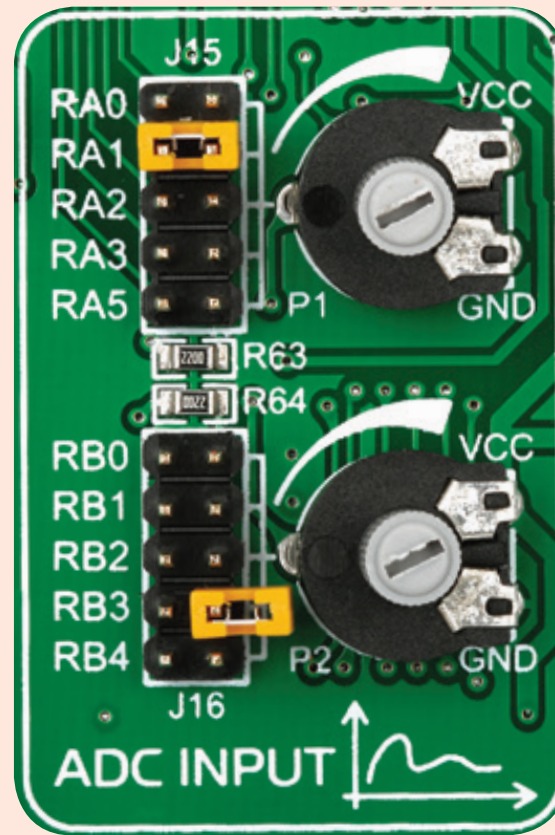
Easily add extra boards using port headers. No soldering, just plug'n'play!



Two mikroBUS connectors enable you to use many additional boards.

Periféricos

Enabling ADC inputs



Botões e LEDs



Tri-state DIP switches, like **SW7** on **Figure 10-2**, are used to enable 4K7 pull-up or pull-down resistor on any desired port pin. Each of these switches has three states:

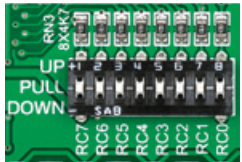


Figure 10-2: Tri-state DIP switch on PORTC

1. **middle position** disables both pull-up and pull-down feature from the PORT pin
2. **up position** connects the resistor in pull-up state to the selected pin
3. **down position** connects the resistor in pull-down state to the selected PORT pin.

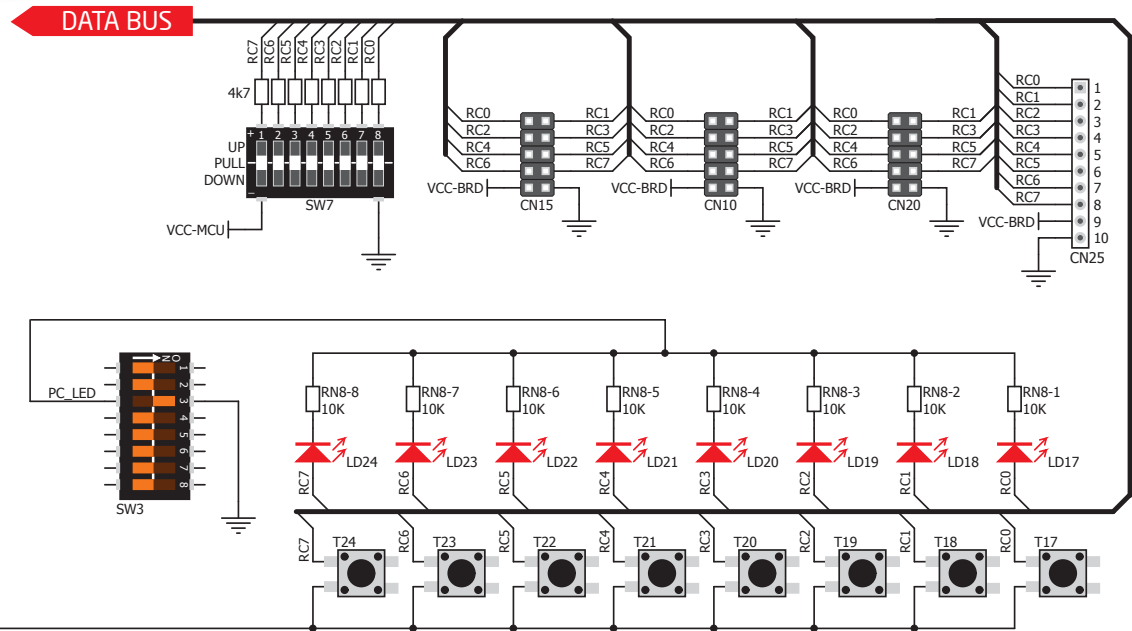
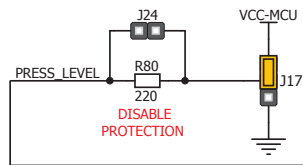
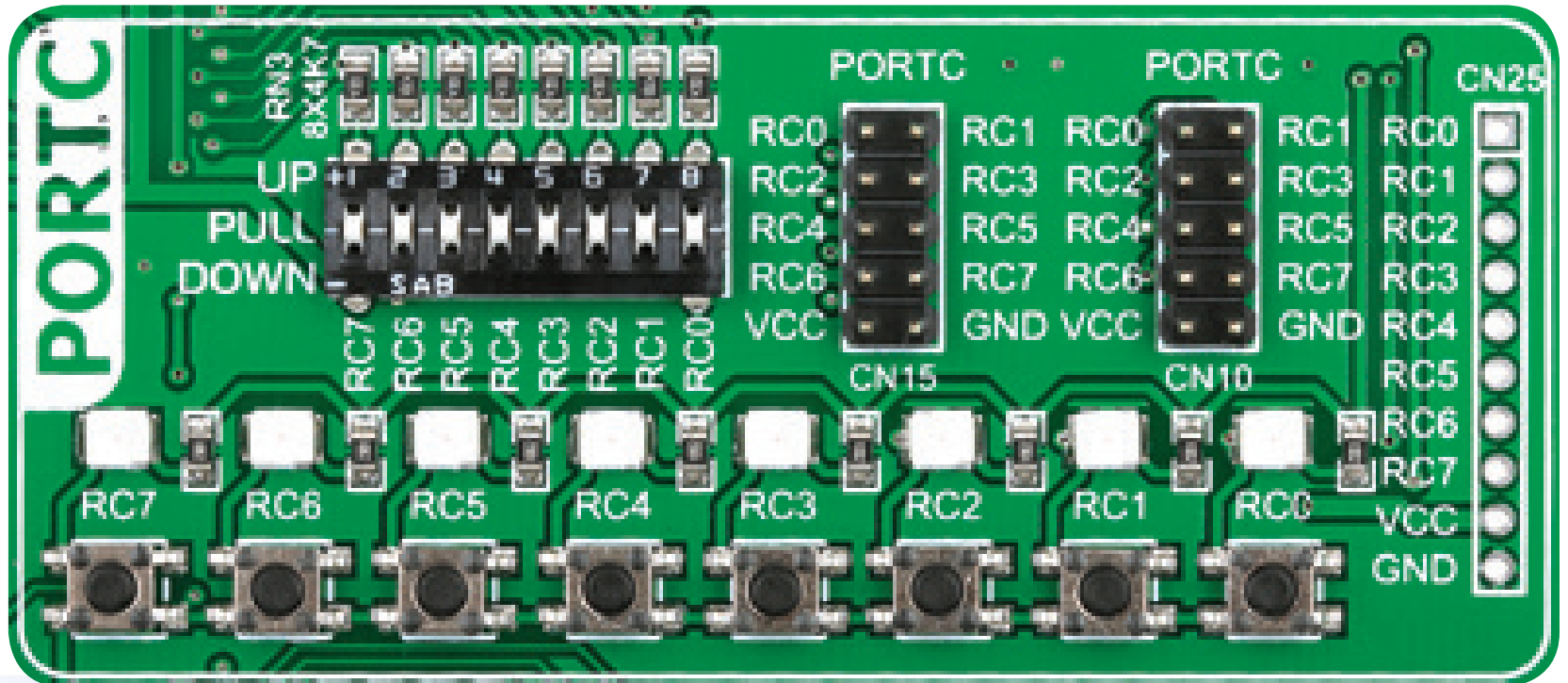
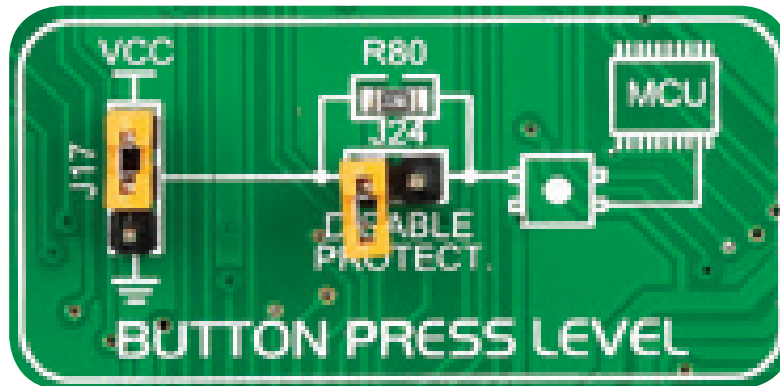
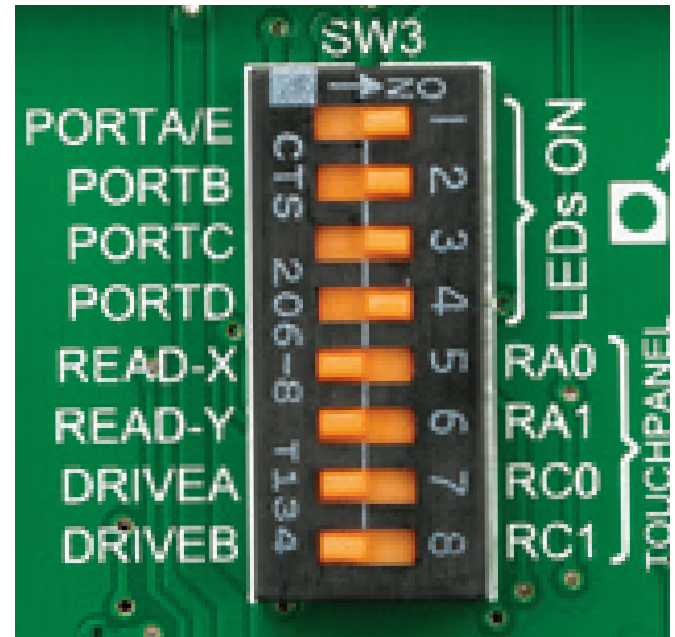
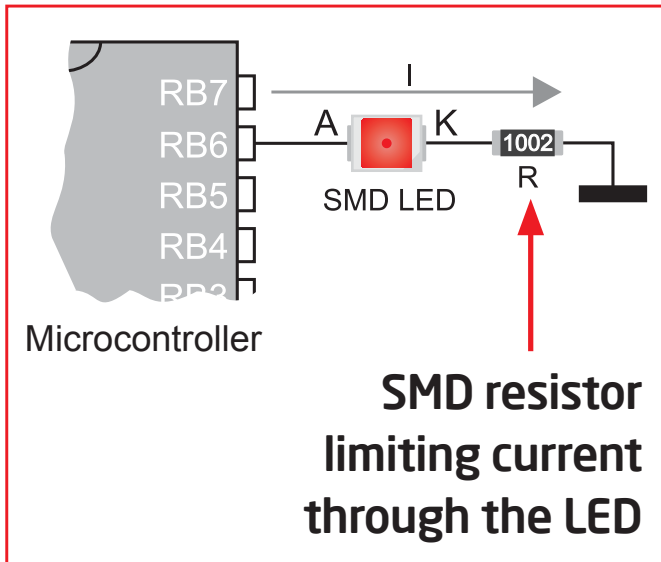
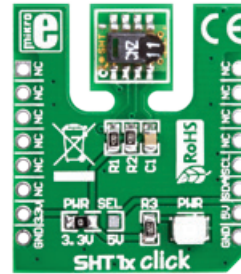
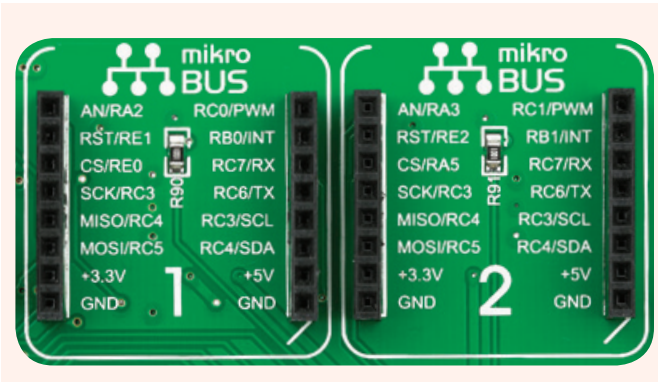


Figure 10-3: Schematic of the single I/O group connected to microcontroller PORTC

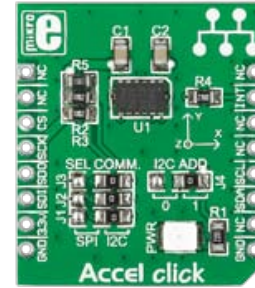




Periféricos Extras



SHT1x click™



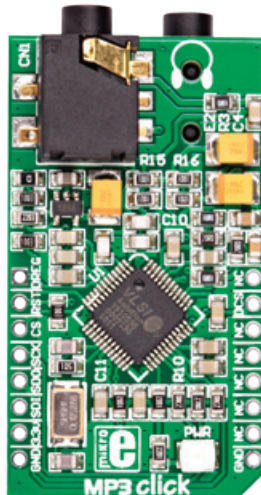
Acelerômetro



microSD click™



WiFi PLUS click™



MP3 click™



Matriz 8x8 LED



RTC



BlueTooth click™

Periféricos Extras

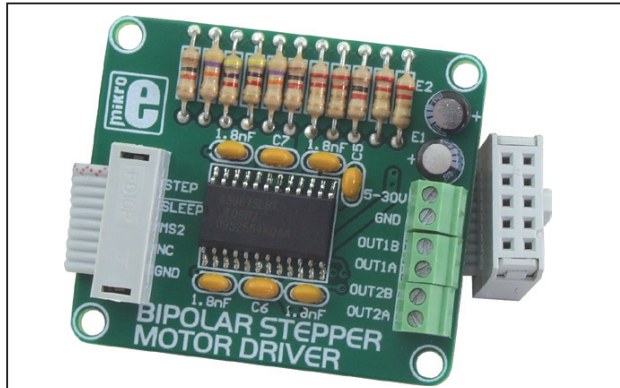


Figure 1: Bipolar Stepper Motor Driver

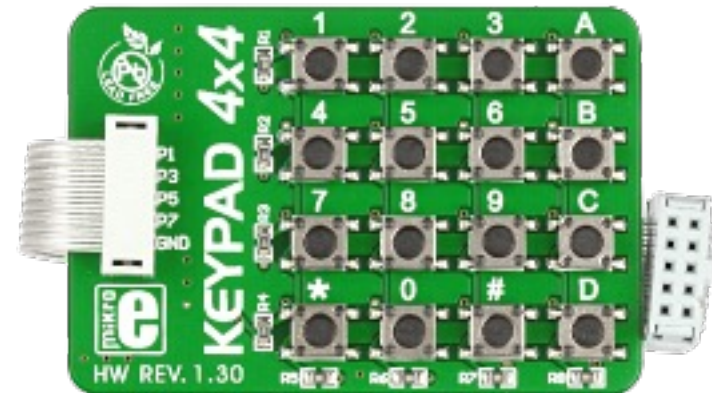


Figure 1: MICROPHONE AMP additional board

FIM

