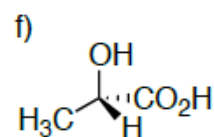
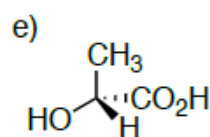
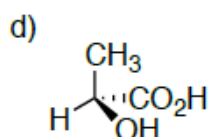
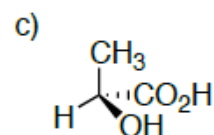
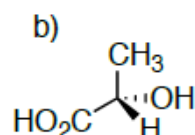
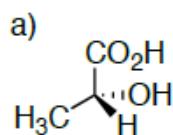
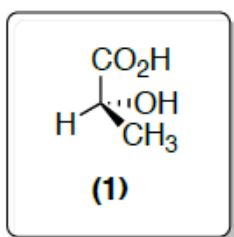
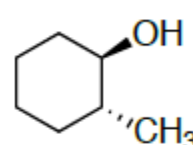
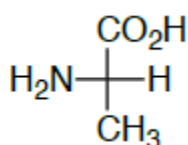
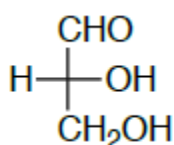
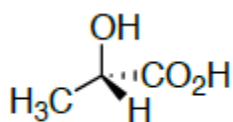


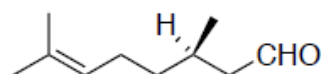
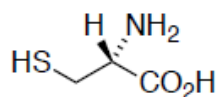
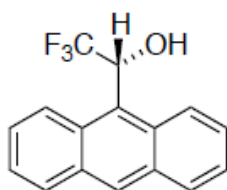
Lista de revisão de estereoquímica

Química Orgânica 2 – Farmácia Noturno

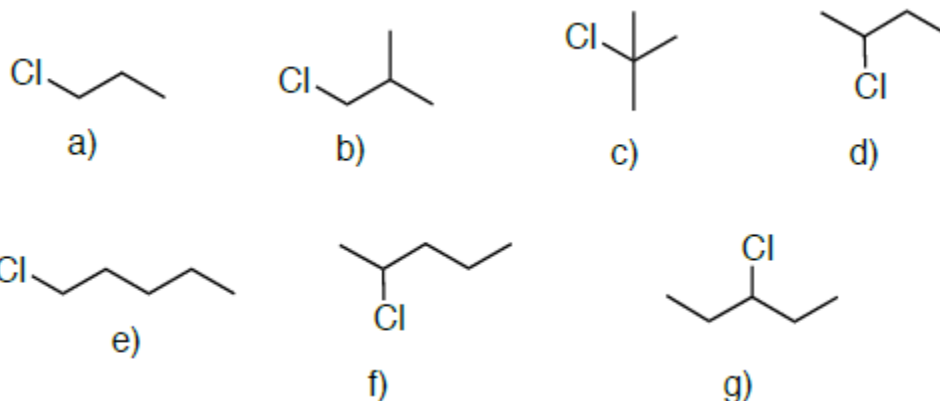
1- Indicar qual a relação entre a estrutura 1 e as estereorepresentações abaixo:



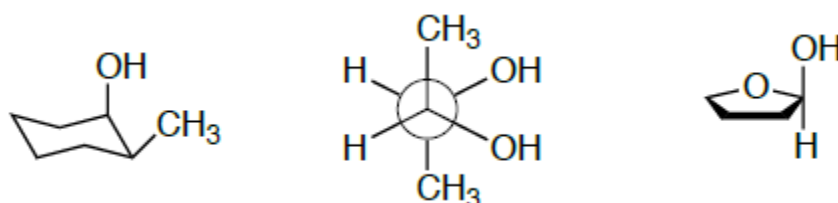
2- Atribua configuração R ou S a cada centro quiral nas moléculas abaixo.



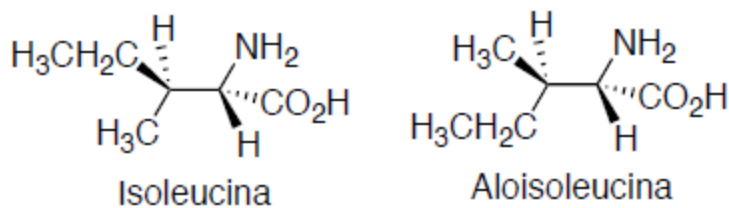
3- Diga se os compostos abaixo são quirais, se forem determine a configuração absoluta de cada centro quiral, desenhando os enantiômeros.



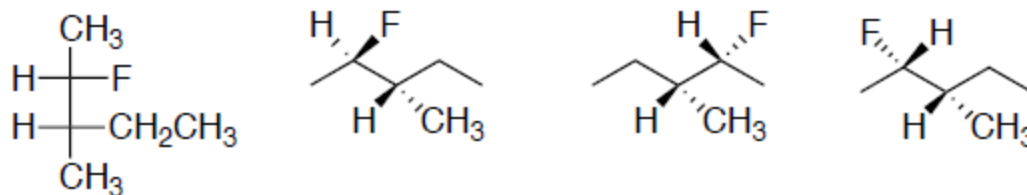
4- Determinar a configuração absoluta dos centros.



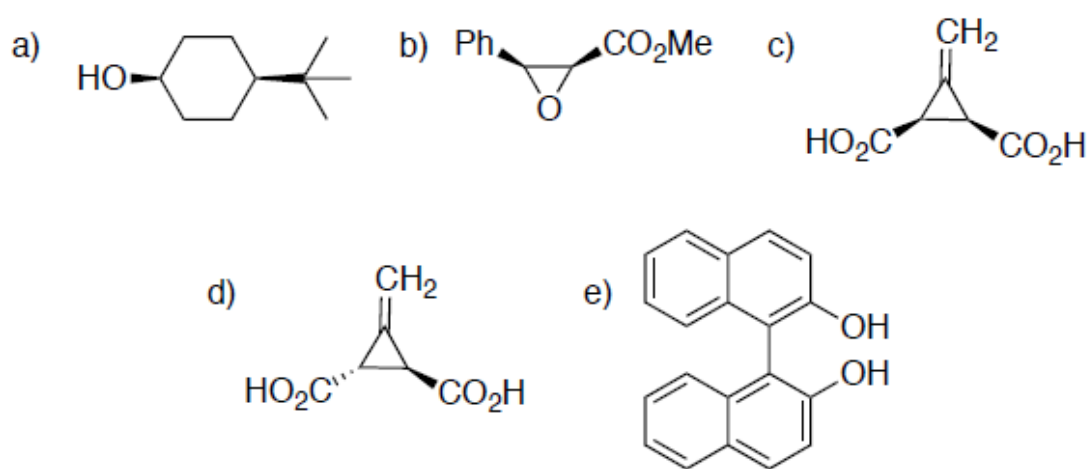
5- Os aminoácidos isoleucina e aloisoleucina estão representados abaixo em suas conformações alternadas. Escreva as projeções de Fischer de cada molécula. Estes compostos são enantiômeros ou diastereoisômeros?



6- Quais são as relações estereoquímicas (idênticos, enantiômeros ou diastereoisômeros) das quatro moléculas abaixo?



7- As moléculas abaixo são quirais?



8- São confôrmeros, diastereoisômeros e ou enantiômeros

