

PRAÇAS CONTEMPORÂNEAS

Plaça dels Països Catalans (Pinõn e Viaplana, 1981)





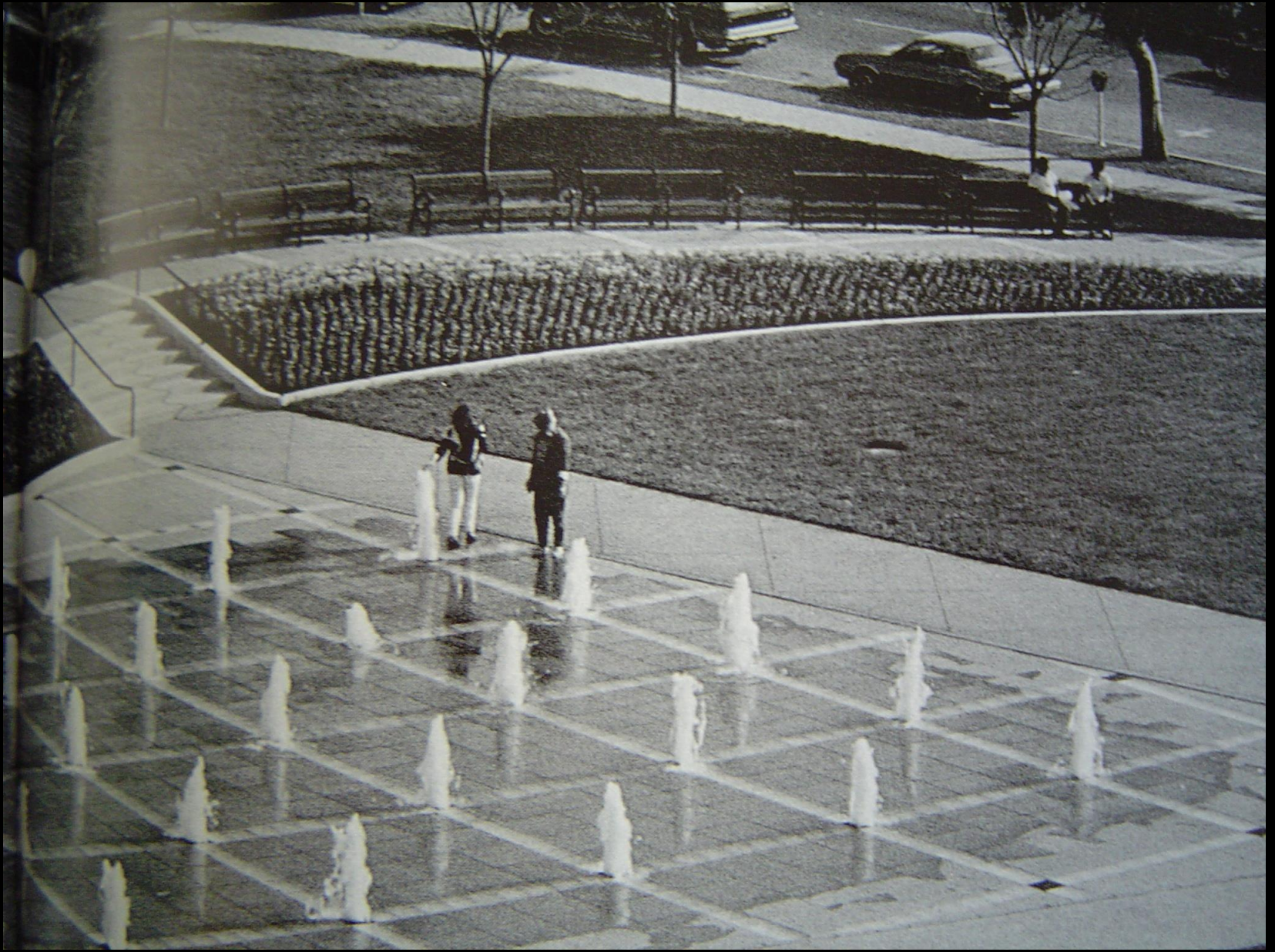






San José Plaza Park (Hargreaves, 1988)

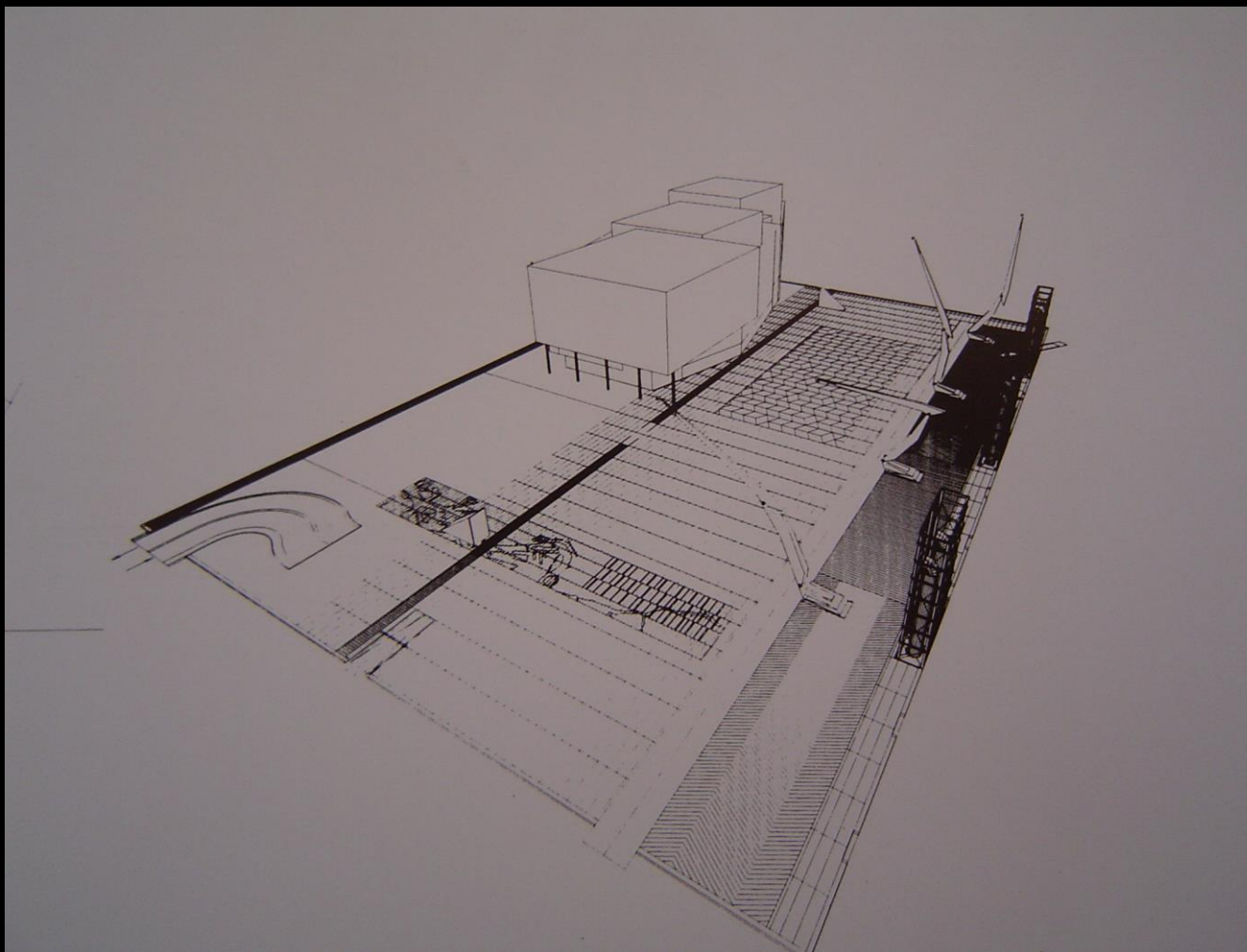


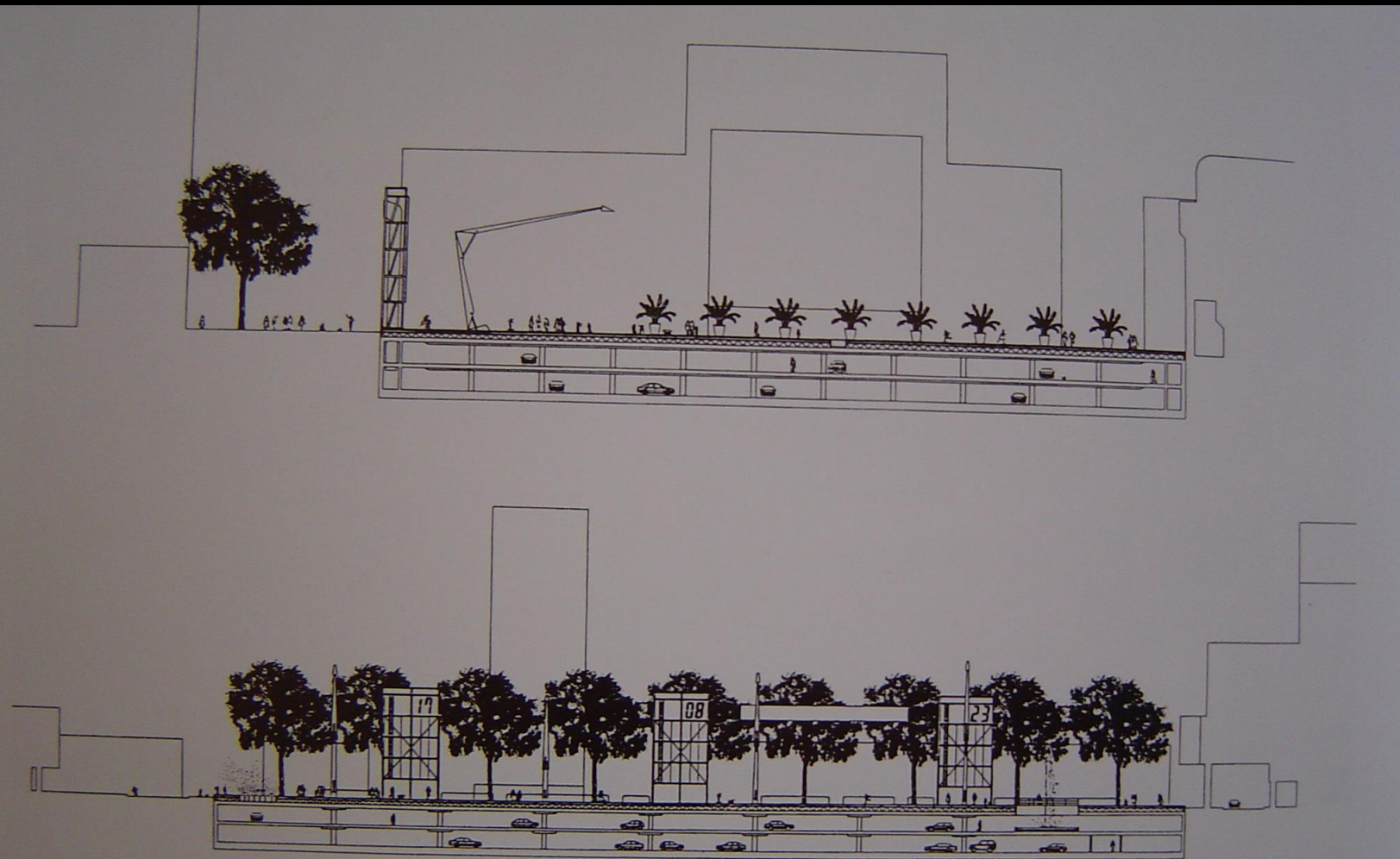






Schouwburgplein, Rotterdam (West 8, 1992)

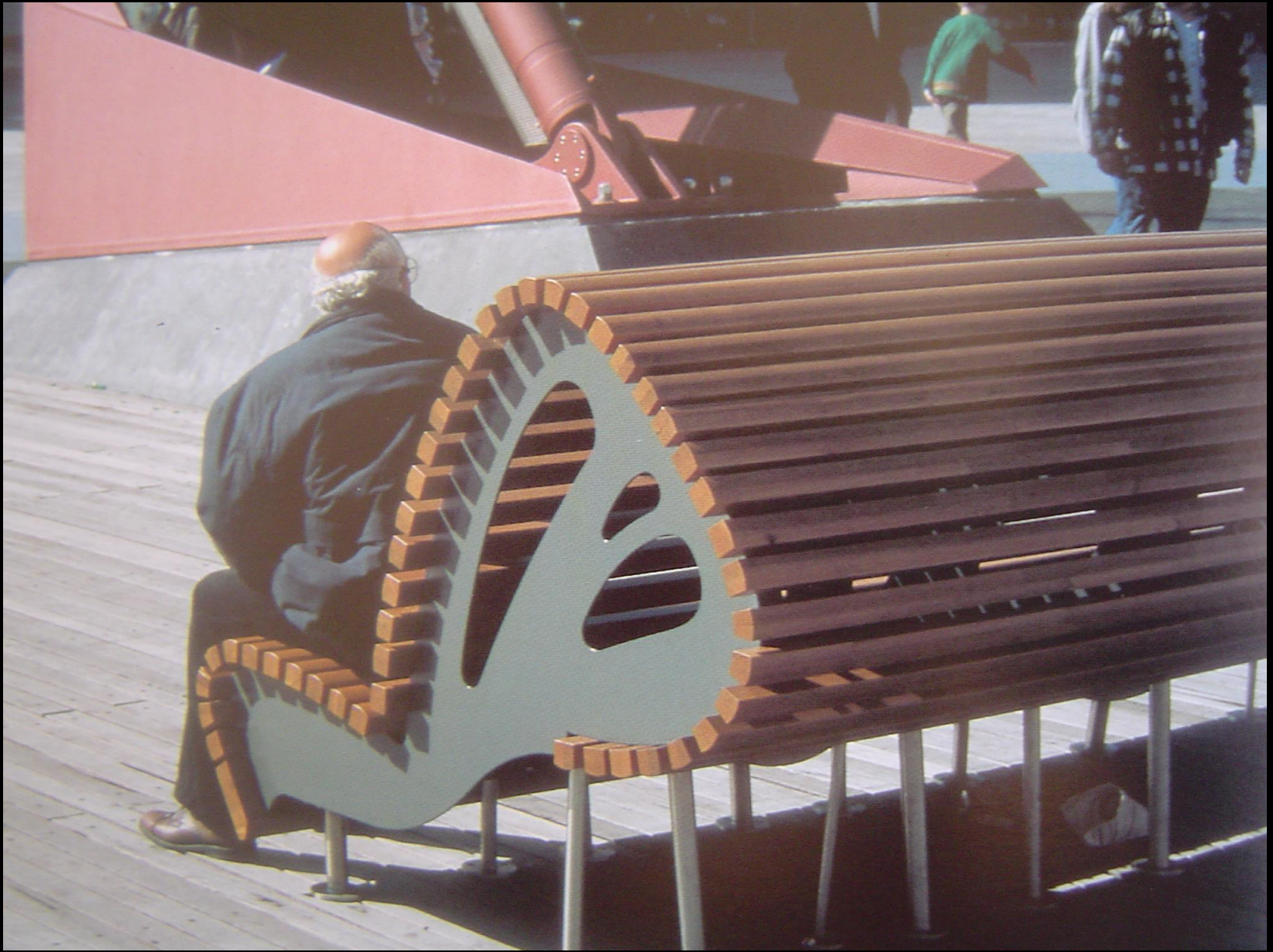


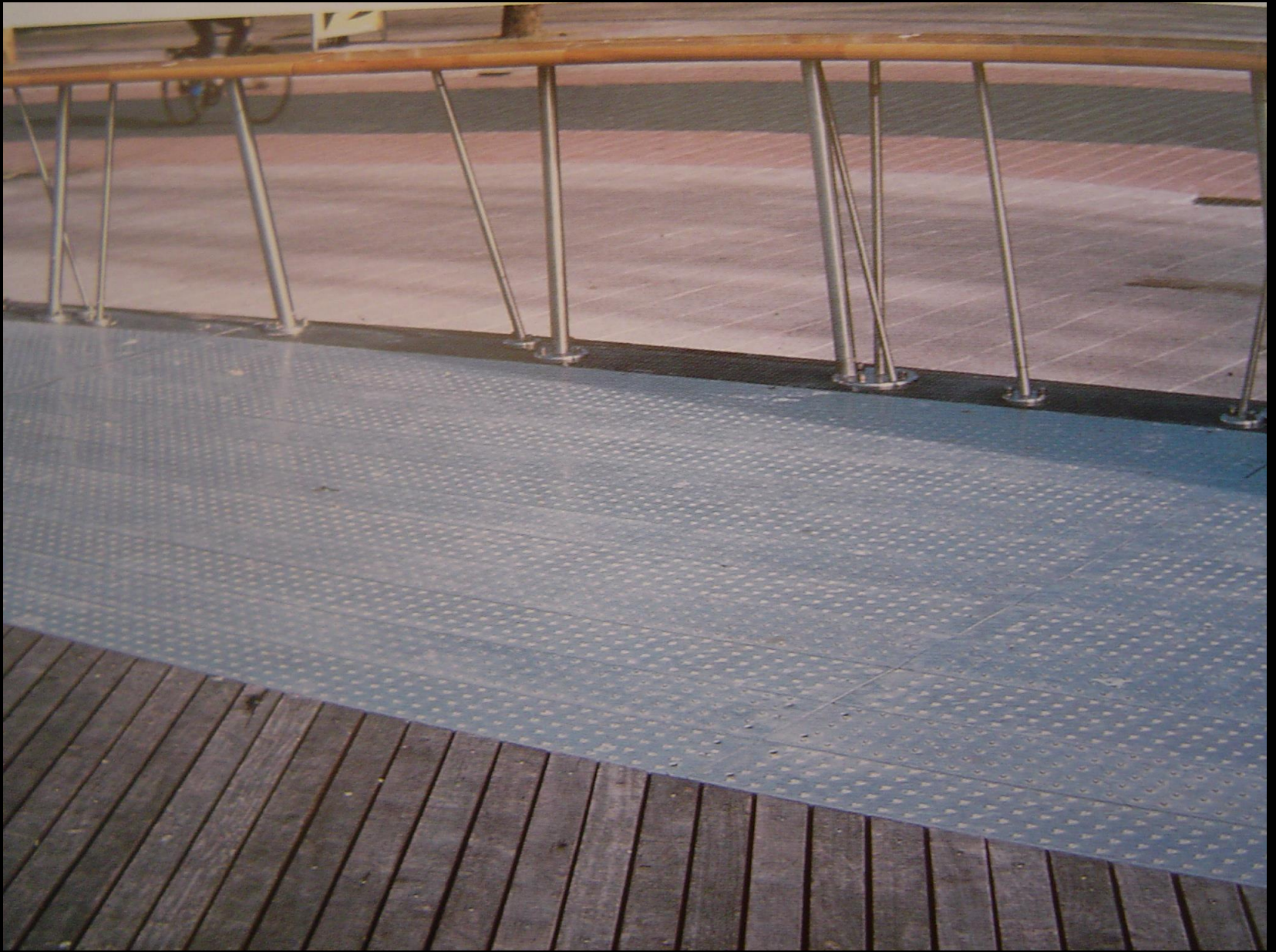


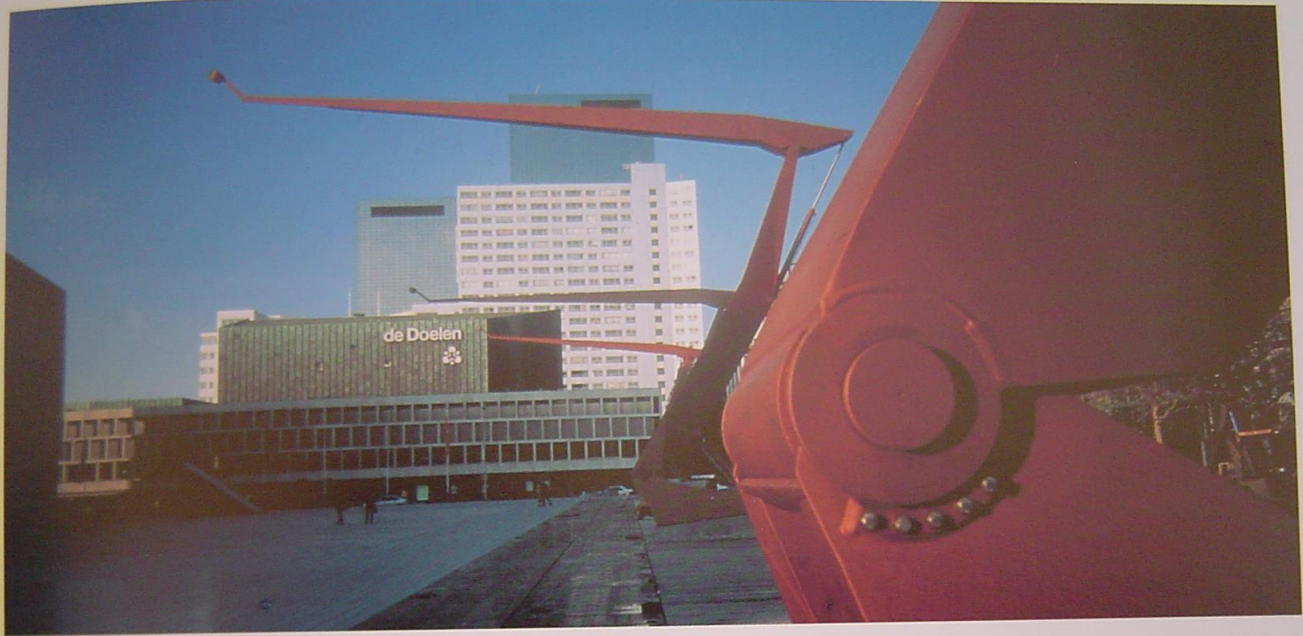
Secciones longitudinal y transversal. El pavimento se ha elevado 35 centímetros sobre el nivel de la calle.

Desolase de las diferentes estru...











Praça Antero de Quental – Leblon
(Fernando Chacel, Índio da Costa, 1994)













Passionnant,
déchirant,
héroïque,
le destin de
l'art moderne
est au
Centre
Pompidou
15 juin 05
-27 février 06

LE DÉSIGN AU CENTRE POMPIDOU











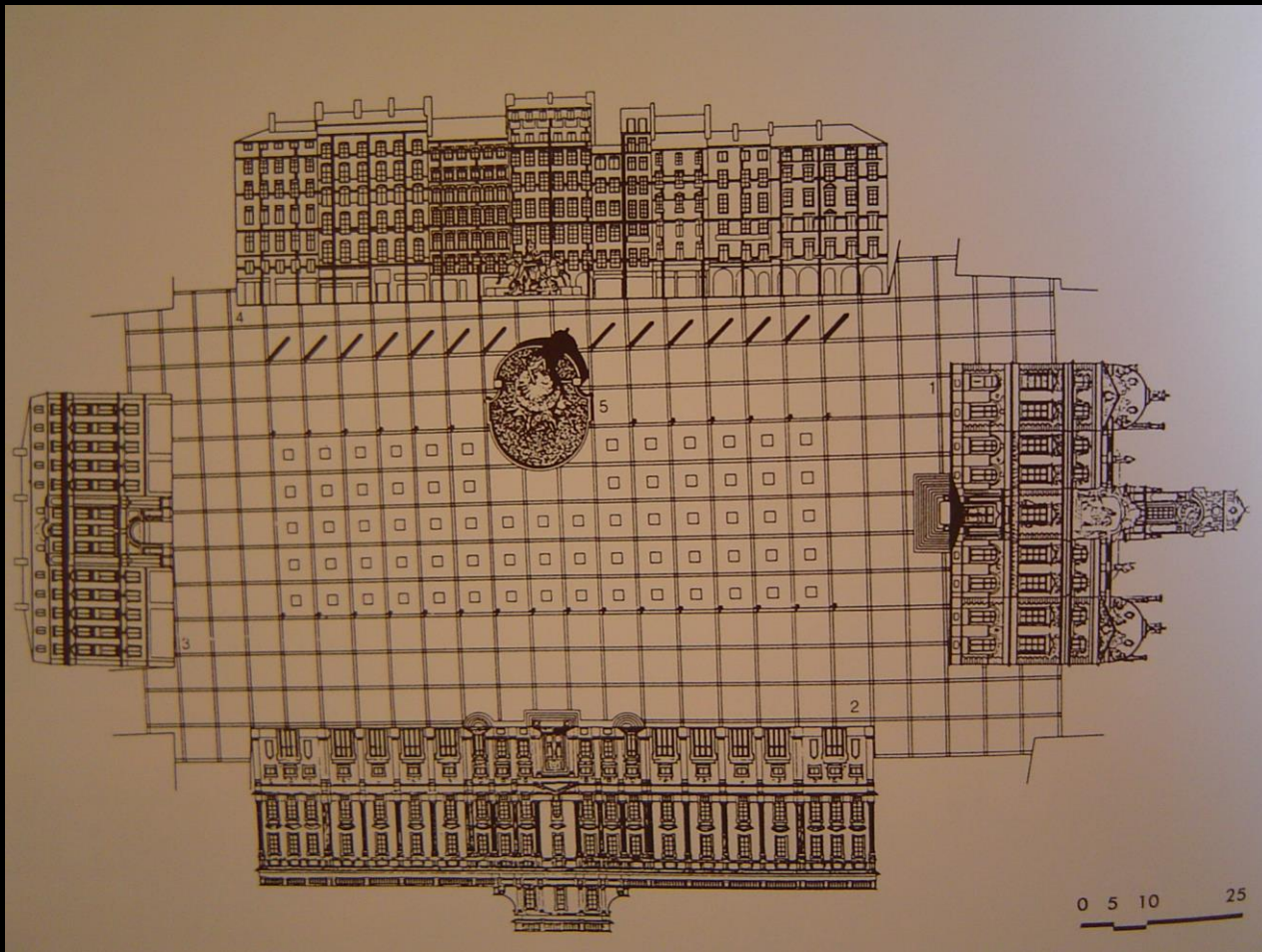


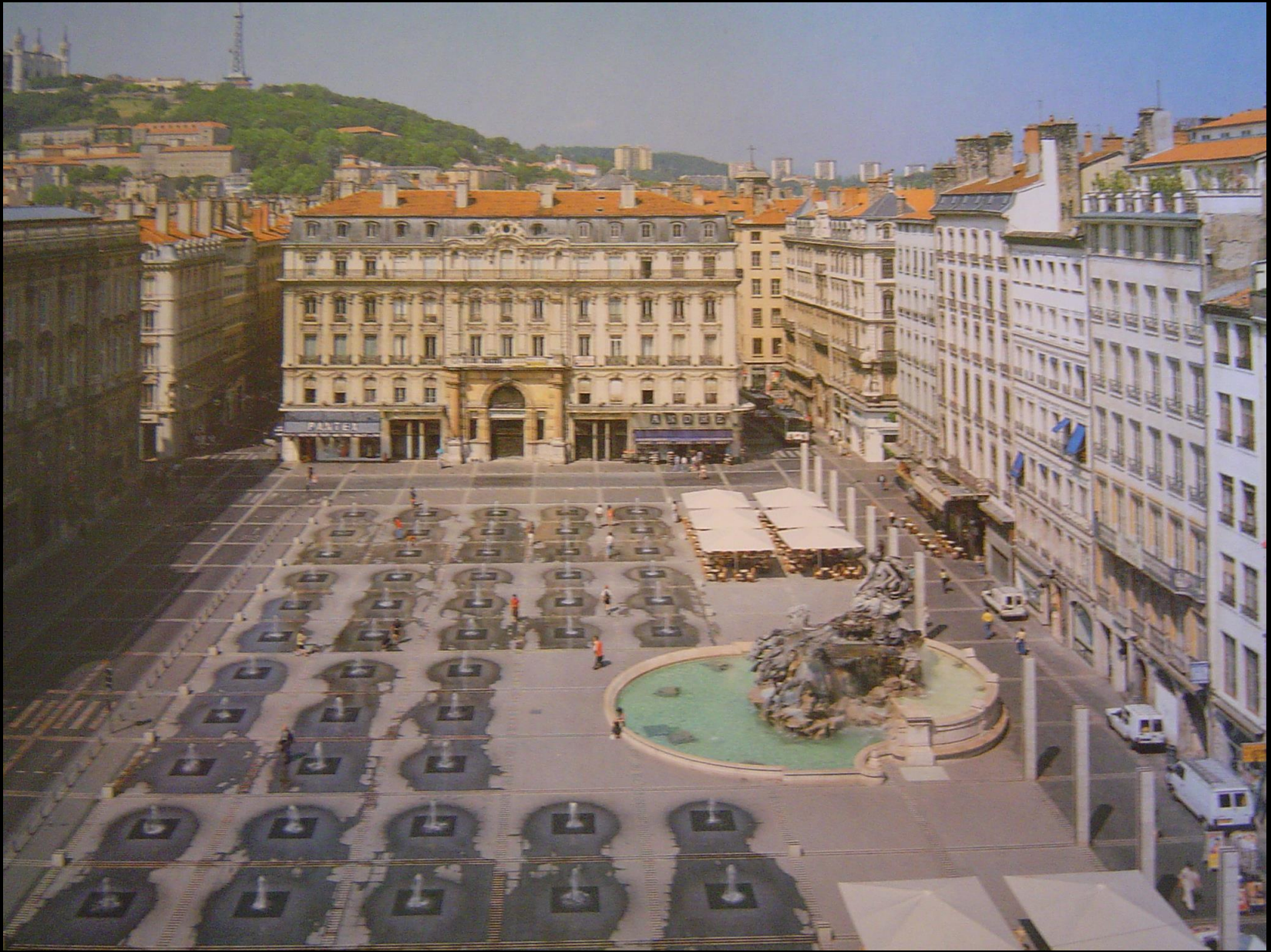




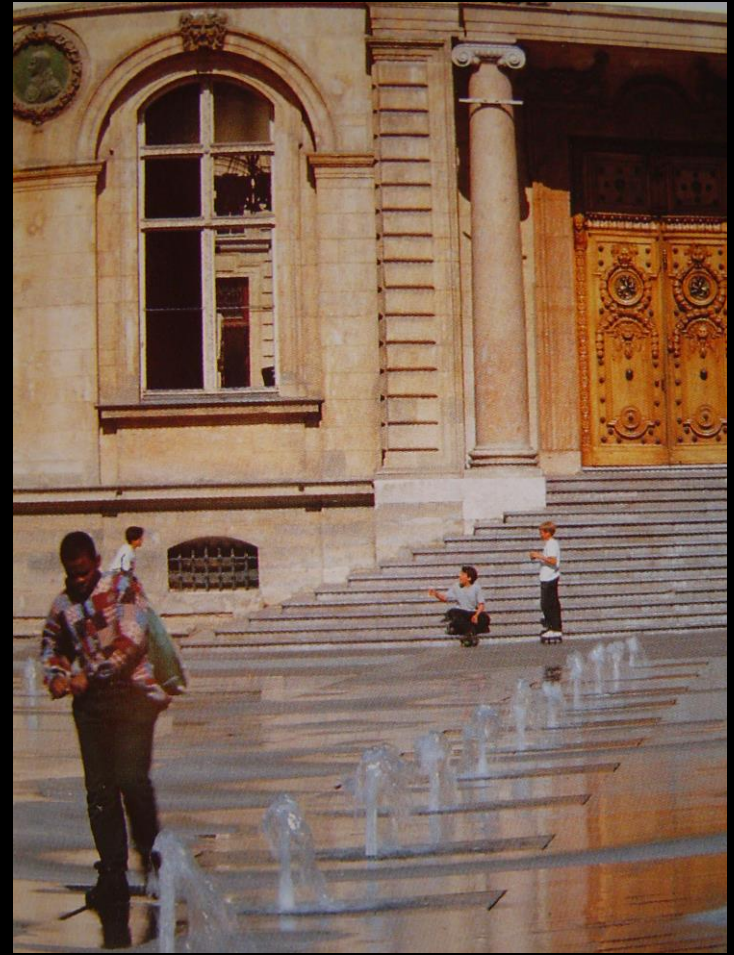


Cristian Drevet, Place des Terraux



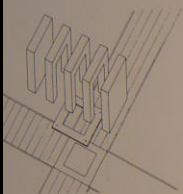




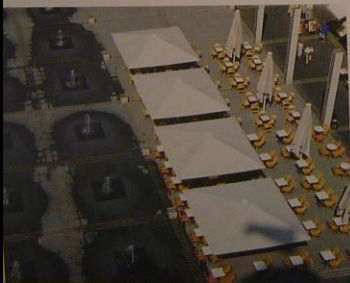




Únicamente tres elementos sobresalen por encima del pavimento: los surtidores de agua, los bloques cúbicos que sirven de asiento y una hilera de columnas que marca la línea de las calles que entran en la plaza.

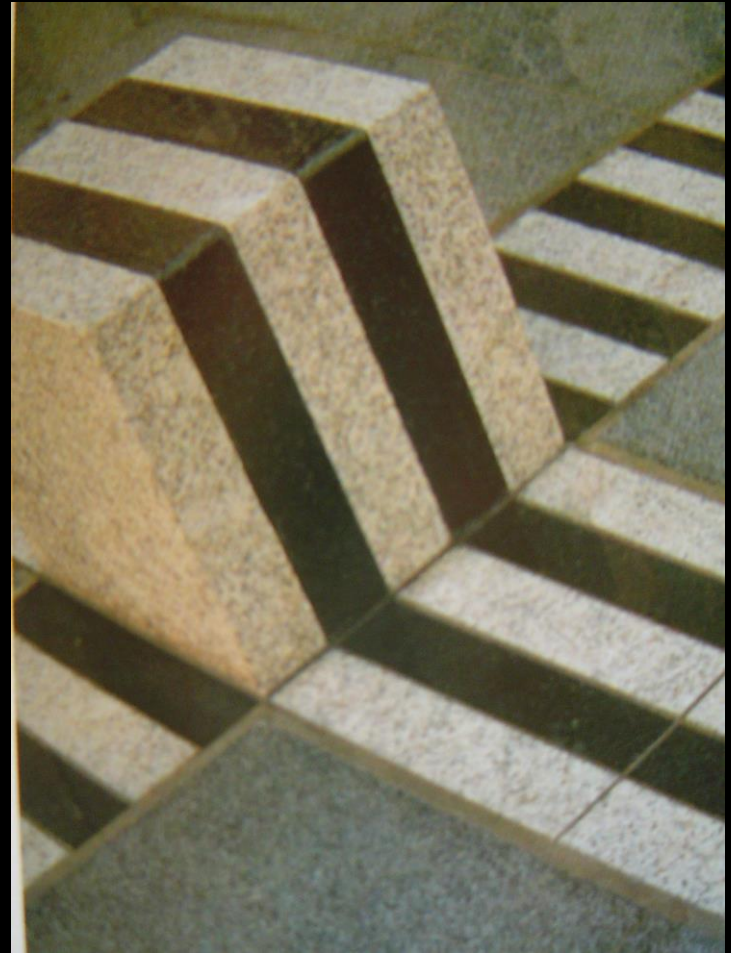


Geometría de los bloques-asiento

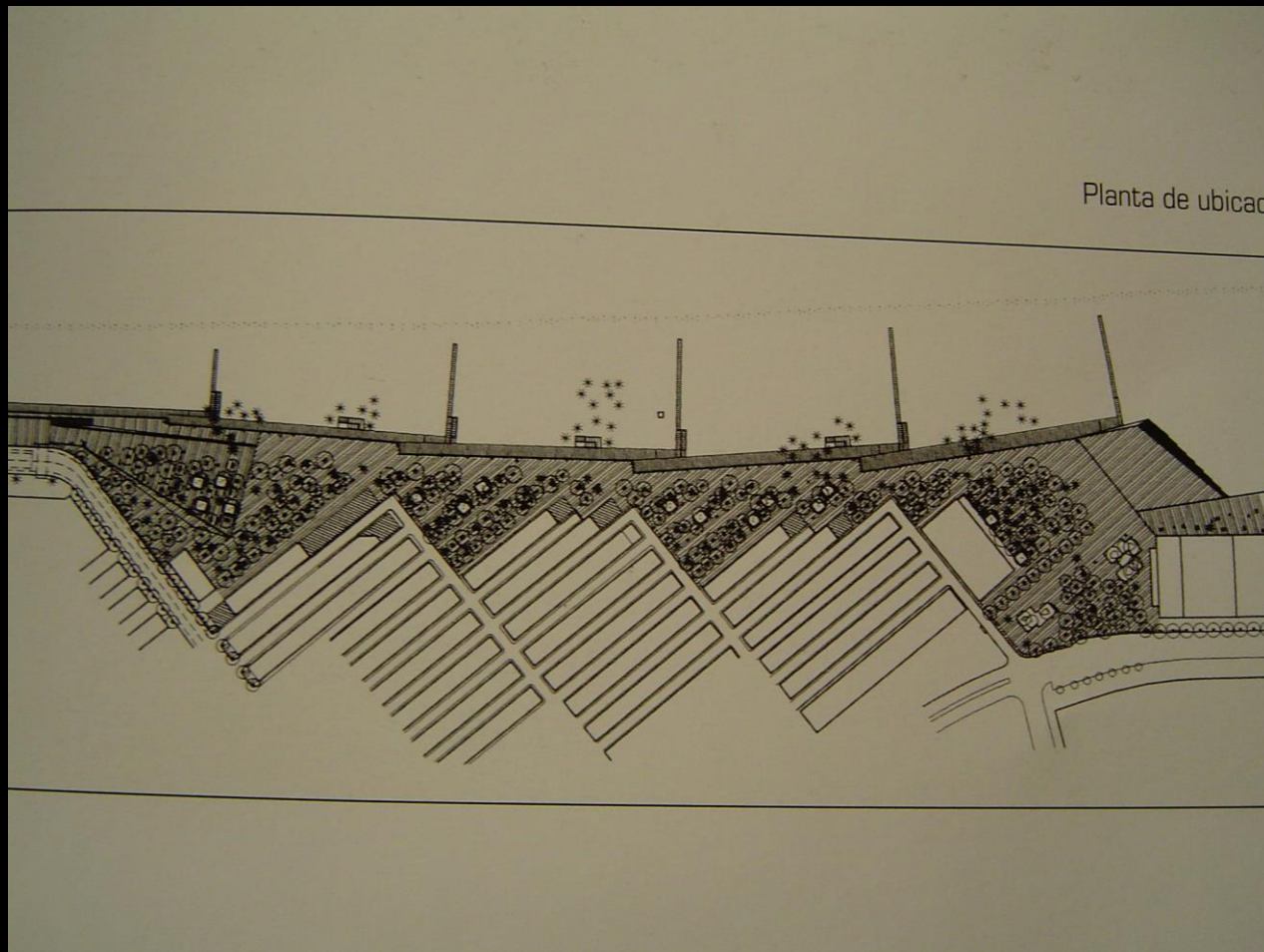


Detalle de las columnas y de los bloques-asiento





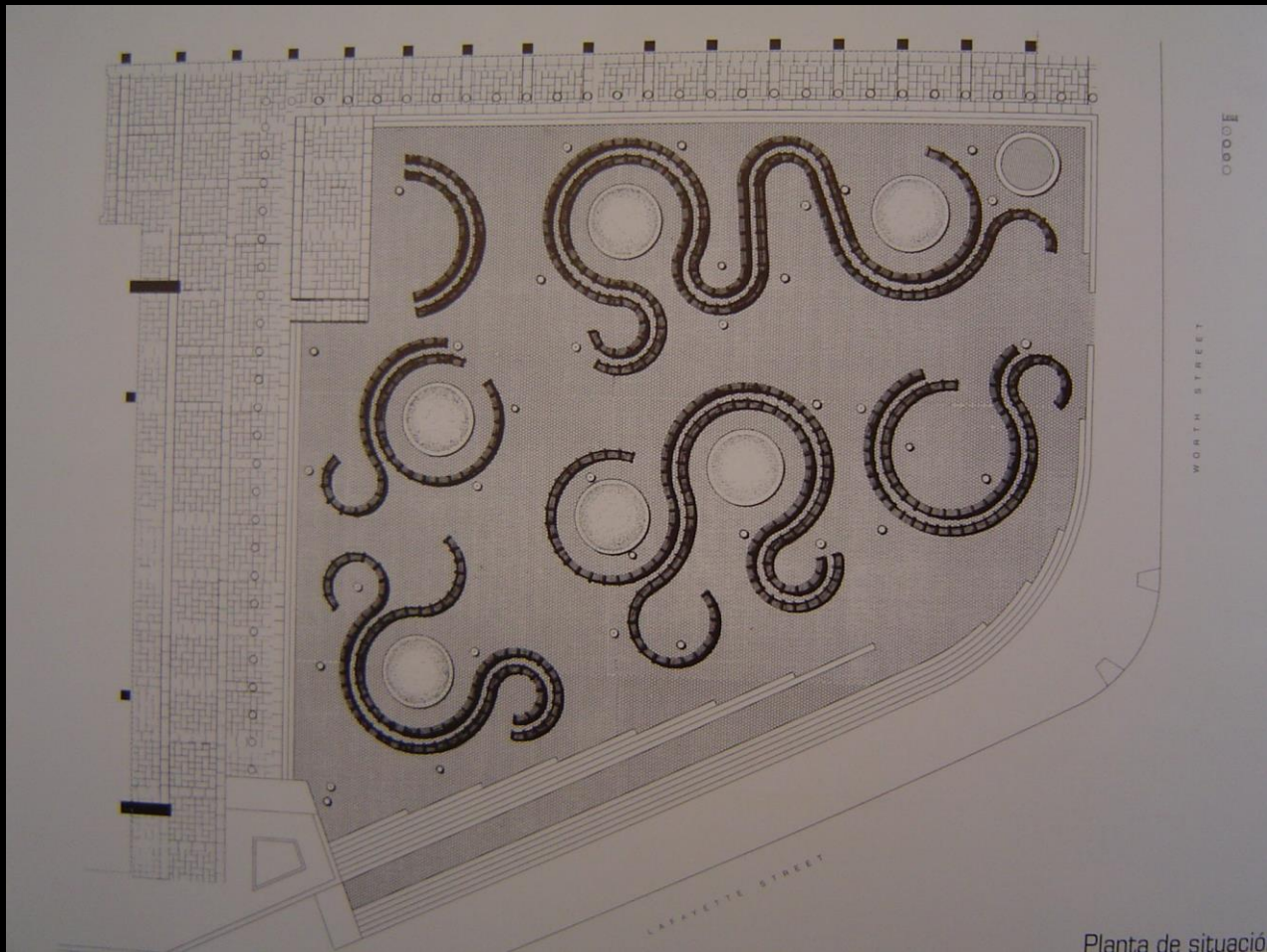
M. Roig, J. Henrich, J. Artigues, Plaça del Mar, Barcelona







Martha Schawrtz, Jacob Javitz Plaza, NY







Federal Courthouse Plaza, Minneapolis

