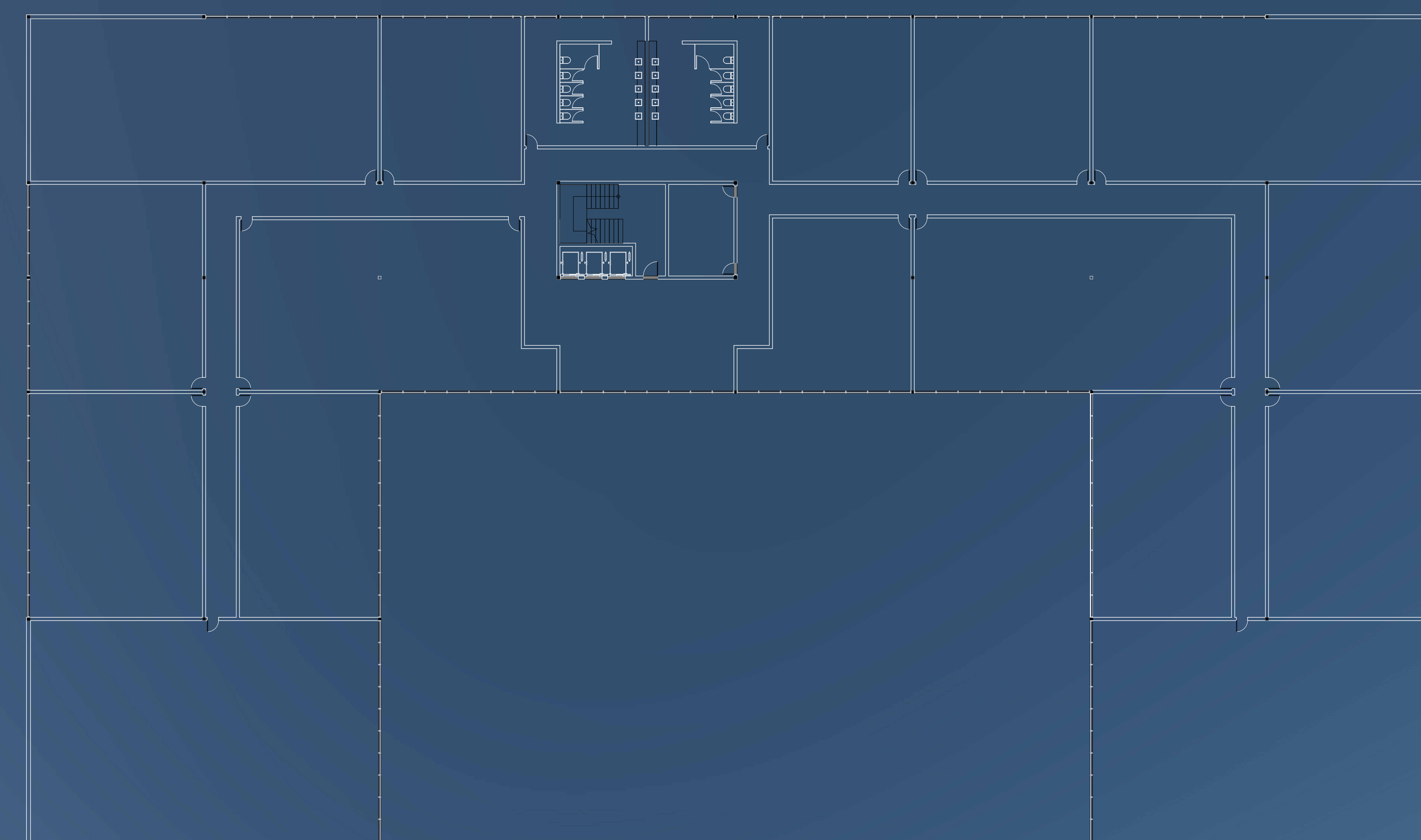
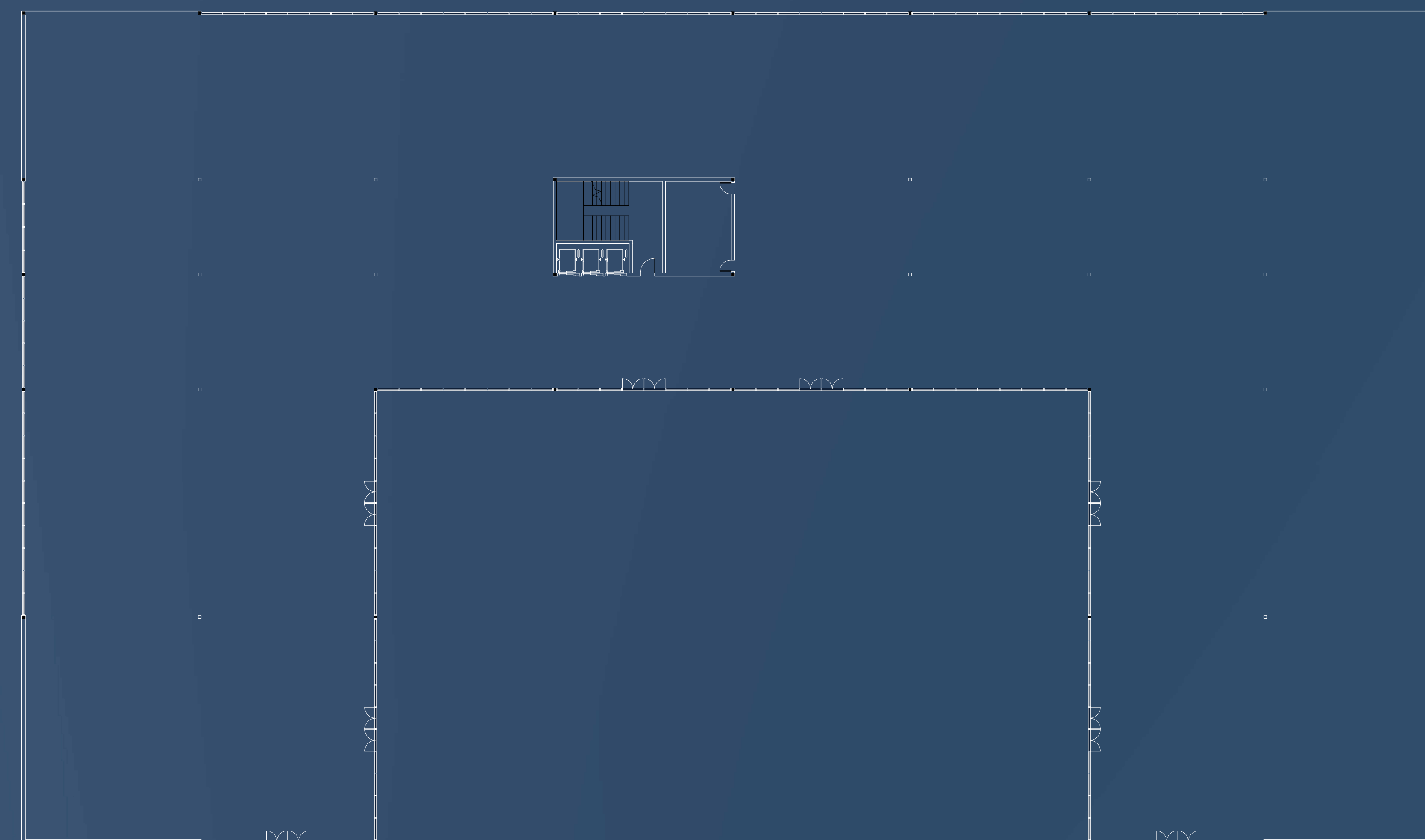
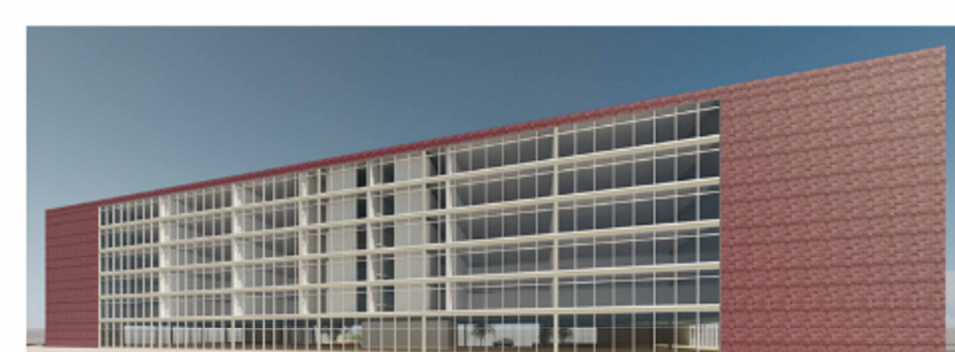
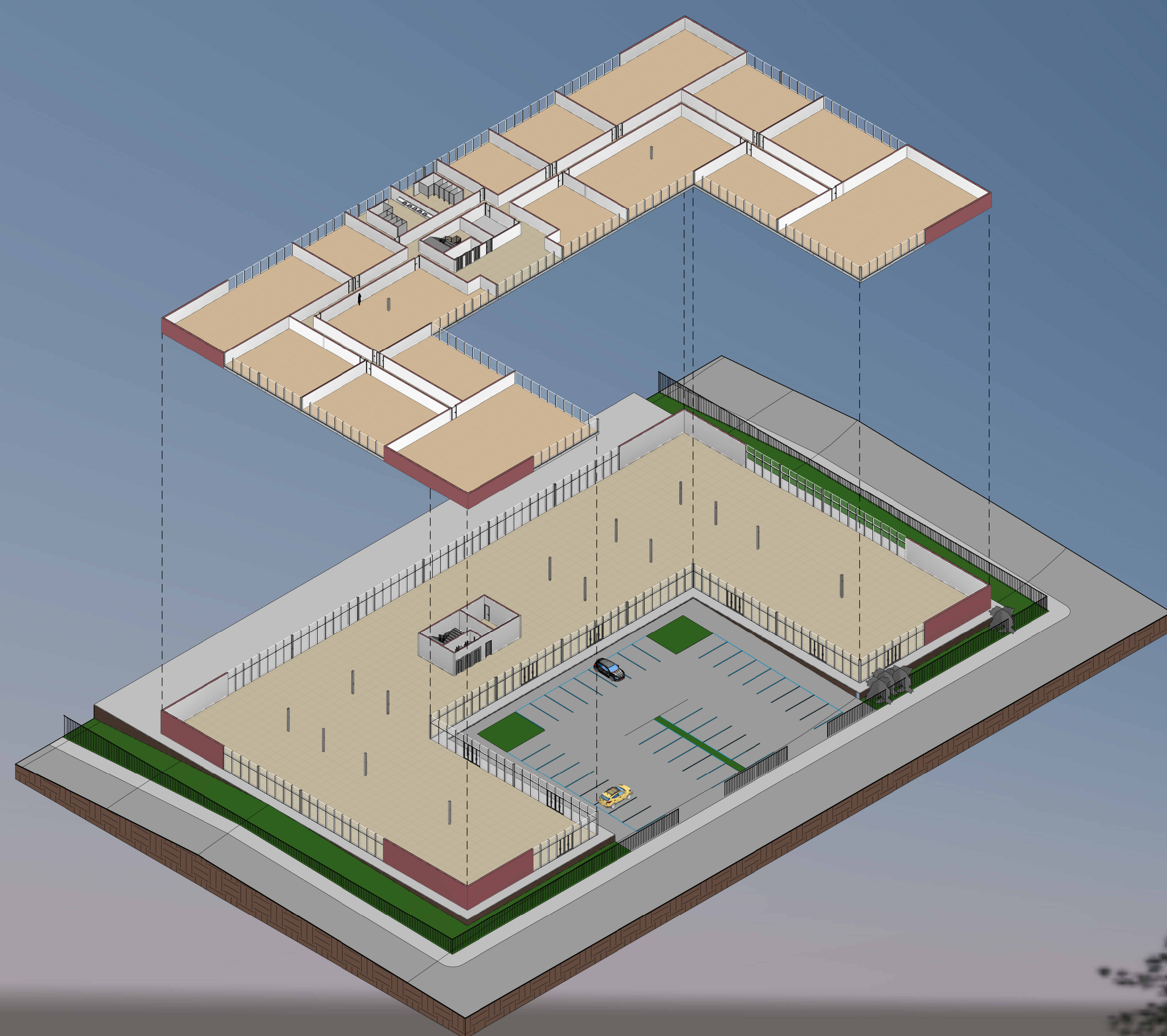
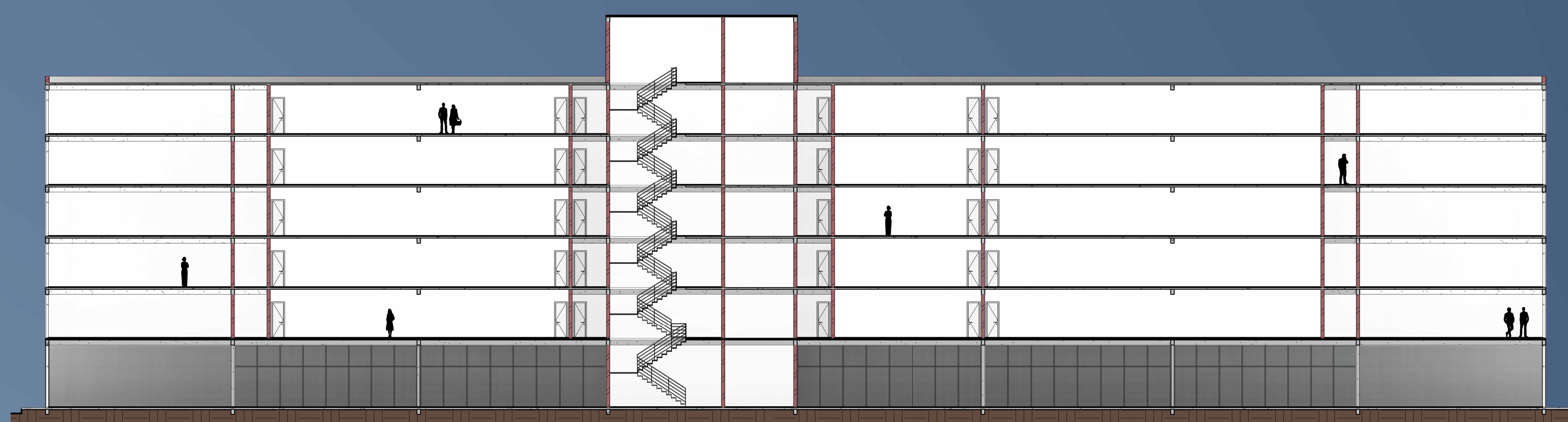
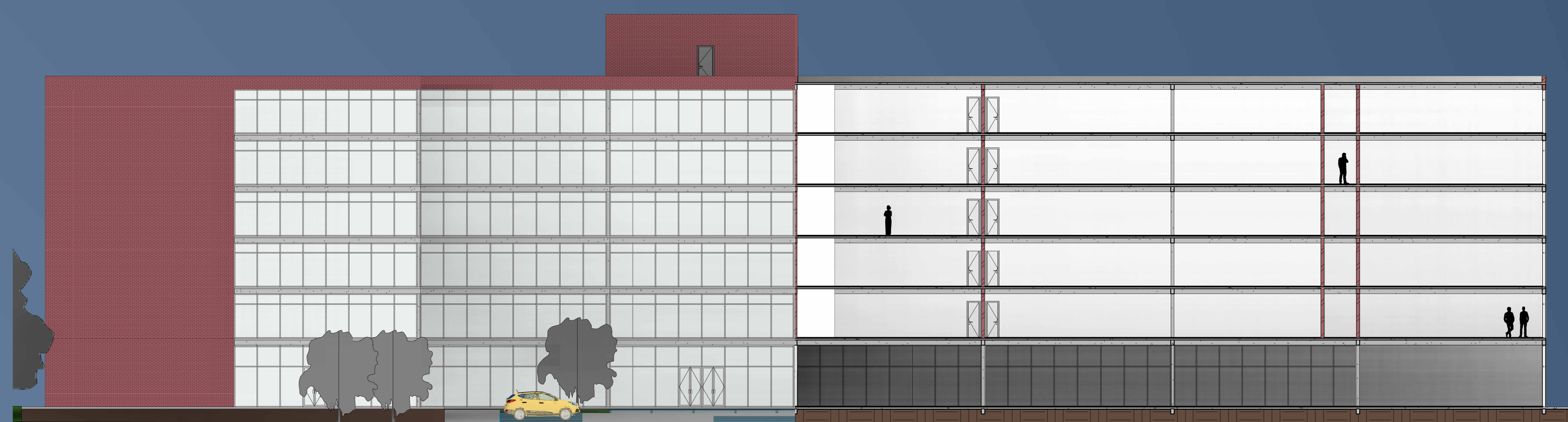


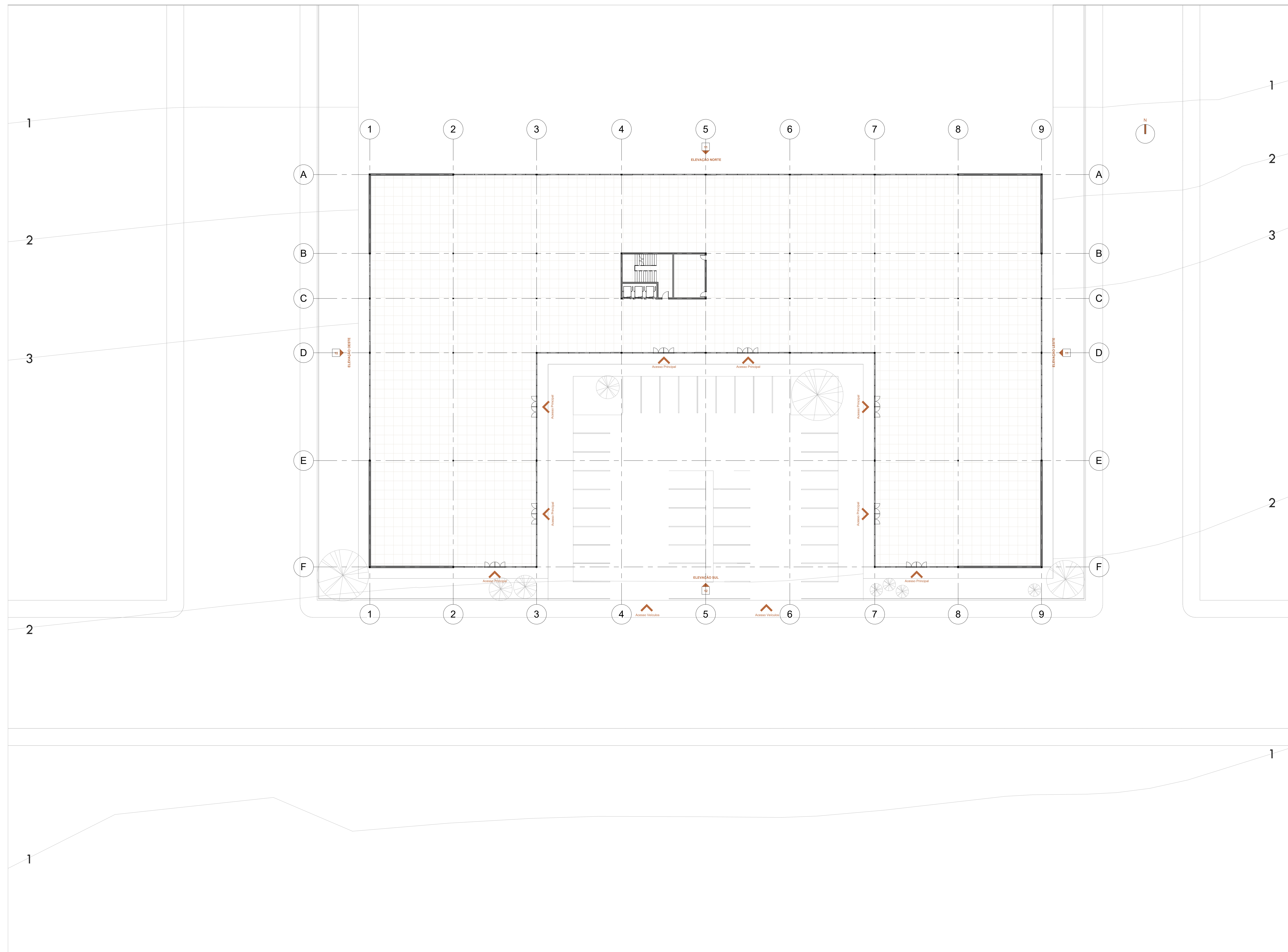
MEIOS DIGITAIS I

PROFª ANJA PRATSCHKE

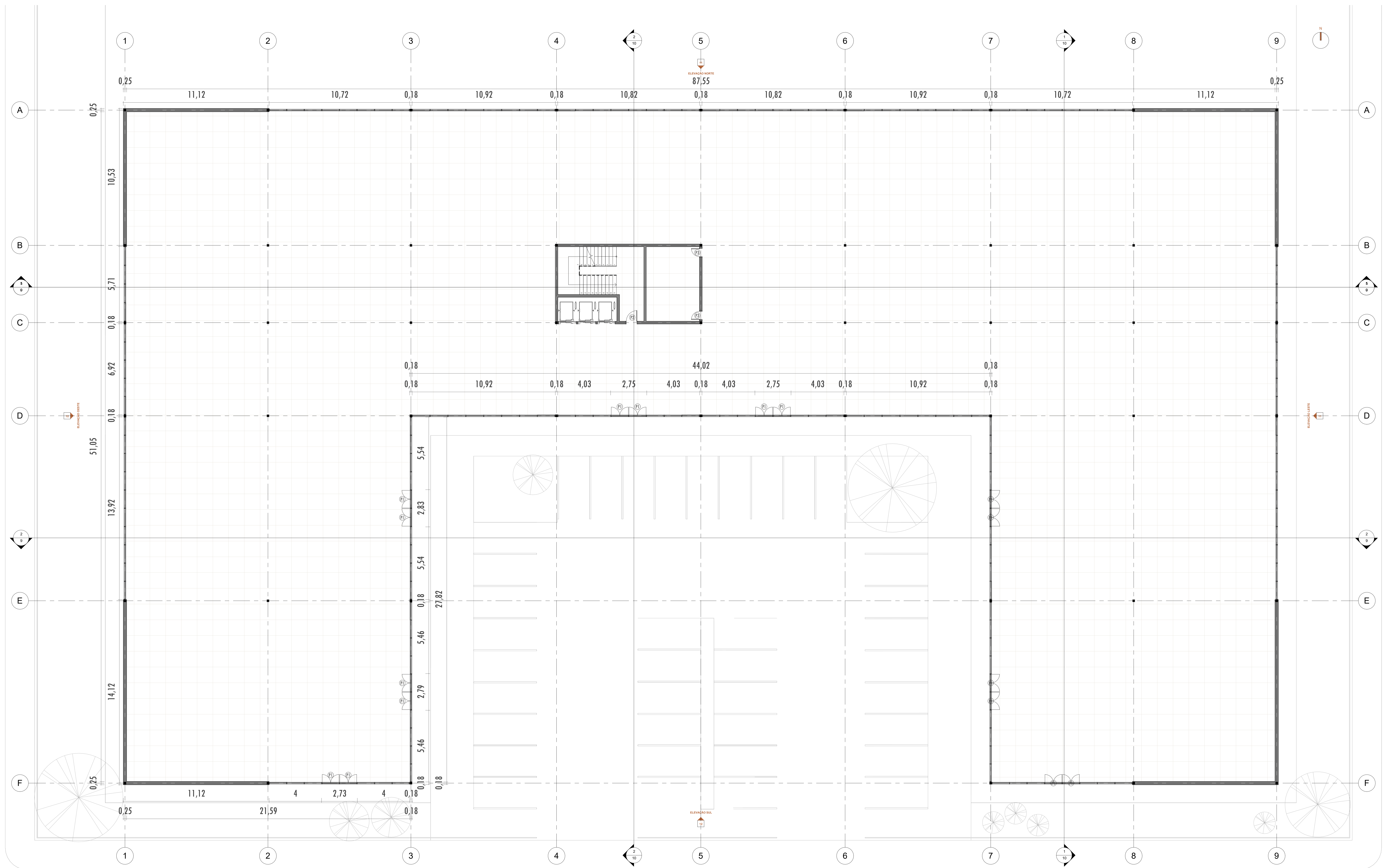
ALUNA: ANA CAROLINA DARVIN

13568391



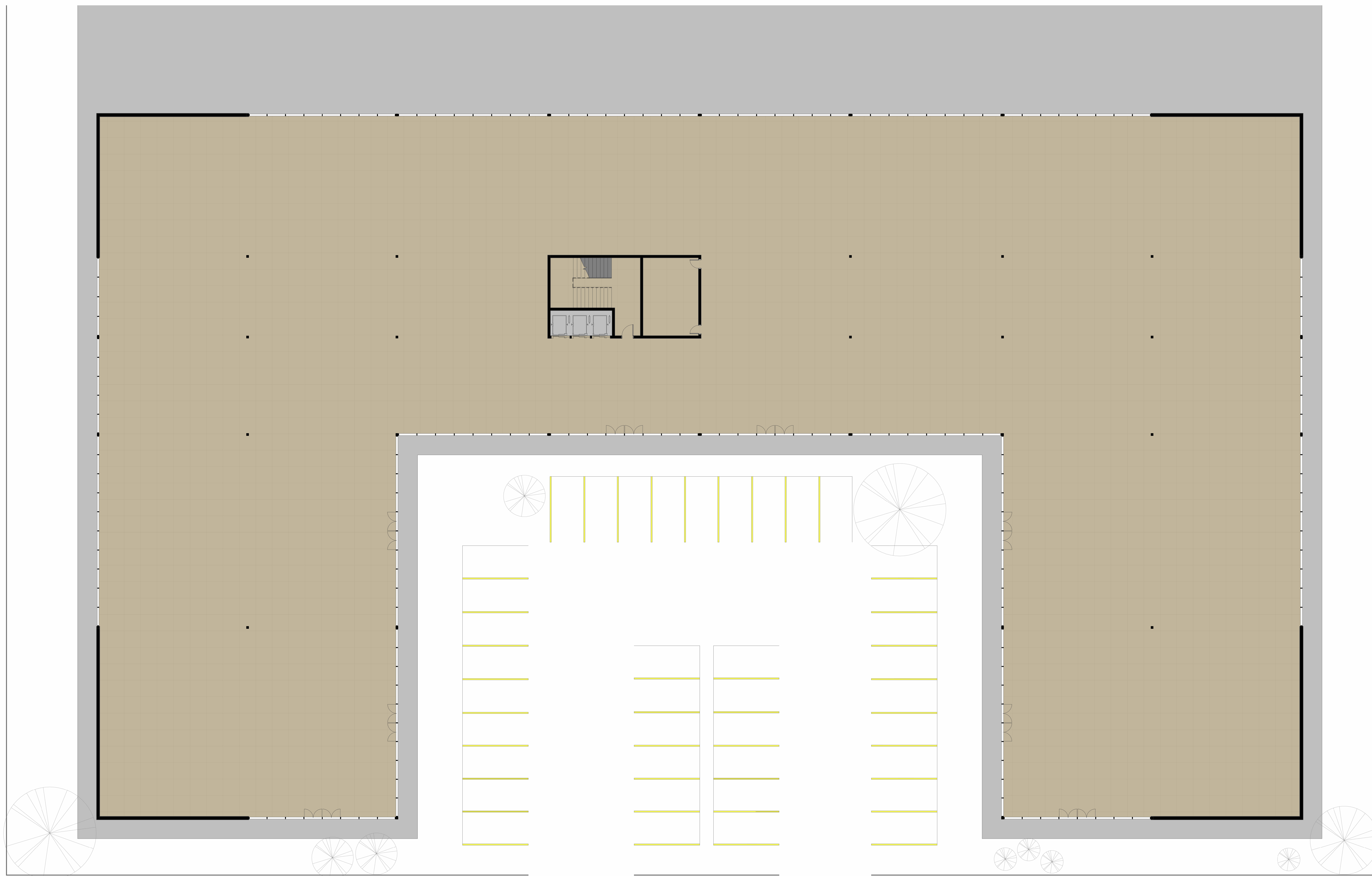


1 IMPLANTAÇÃO
Escala: 1 : 200



1 PLANTA BAIXA TÉCNICA - TÉRREO
Escala: 1 : 100

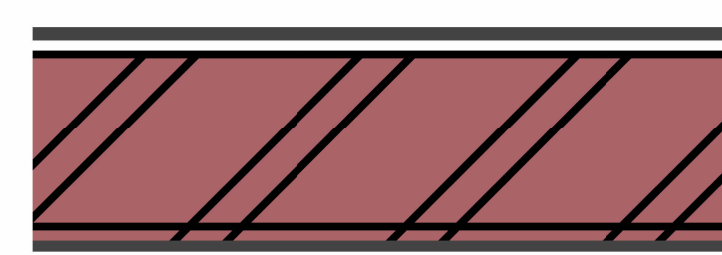
TABELA DE PORTAS					
CÓDIGO	TIPO	LARGURA	ALTURA	MATERIAL	QTD.
P1	Porta de abrir - 2 folhas	130	230	Alumínio e vidro	16
P2	Porta de abrir - 1 folha	90	210	Madeira	1
P3	Porta de abrir - 1 folha	70	210	Madeira	2



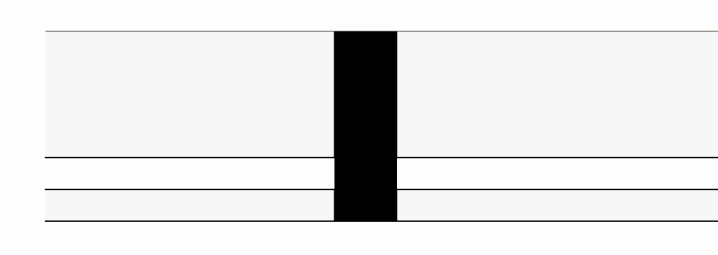
1 PLANTA BAIXA TÉRREO
Escala: 1 : 100



PISO DE MÁRMORE TRAVERTINO
para todo o pavimento térreo



PAREDE EXTERNA
Alvenaria 25cm - acabamento externo de alvenaria e interno de tinta branca



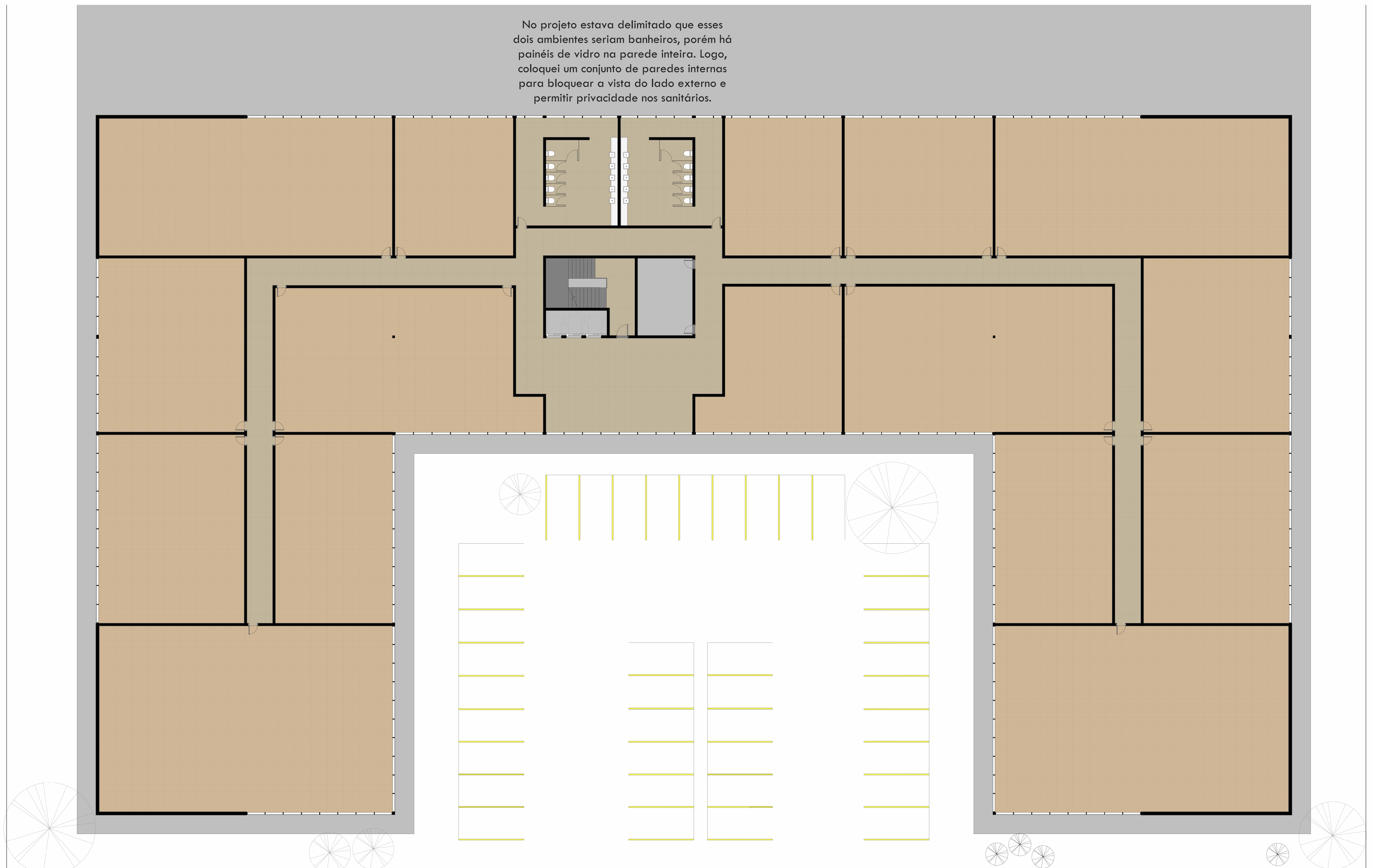
PAREDE CORTINA - EXTERNA
15cm

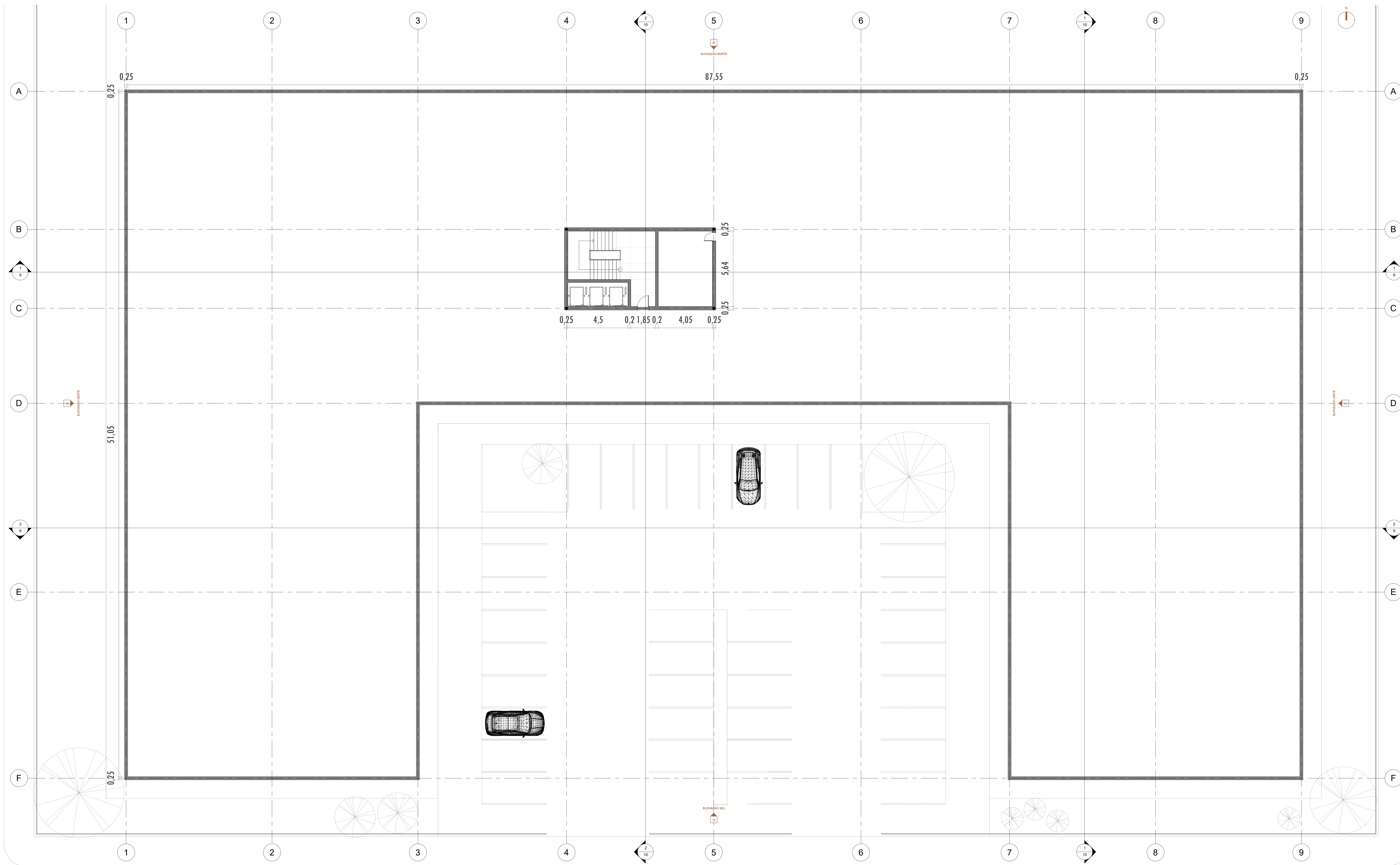


1 PLANTA BAIXA TÉCNICA - PAVIMENTO TIPO
Escala: 1 : 100

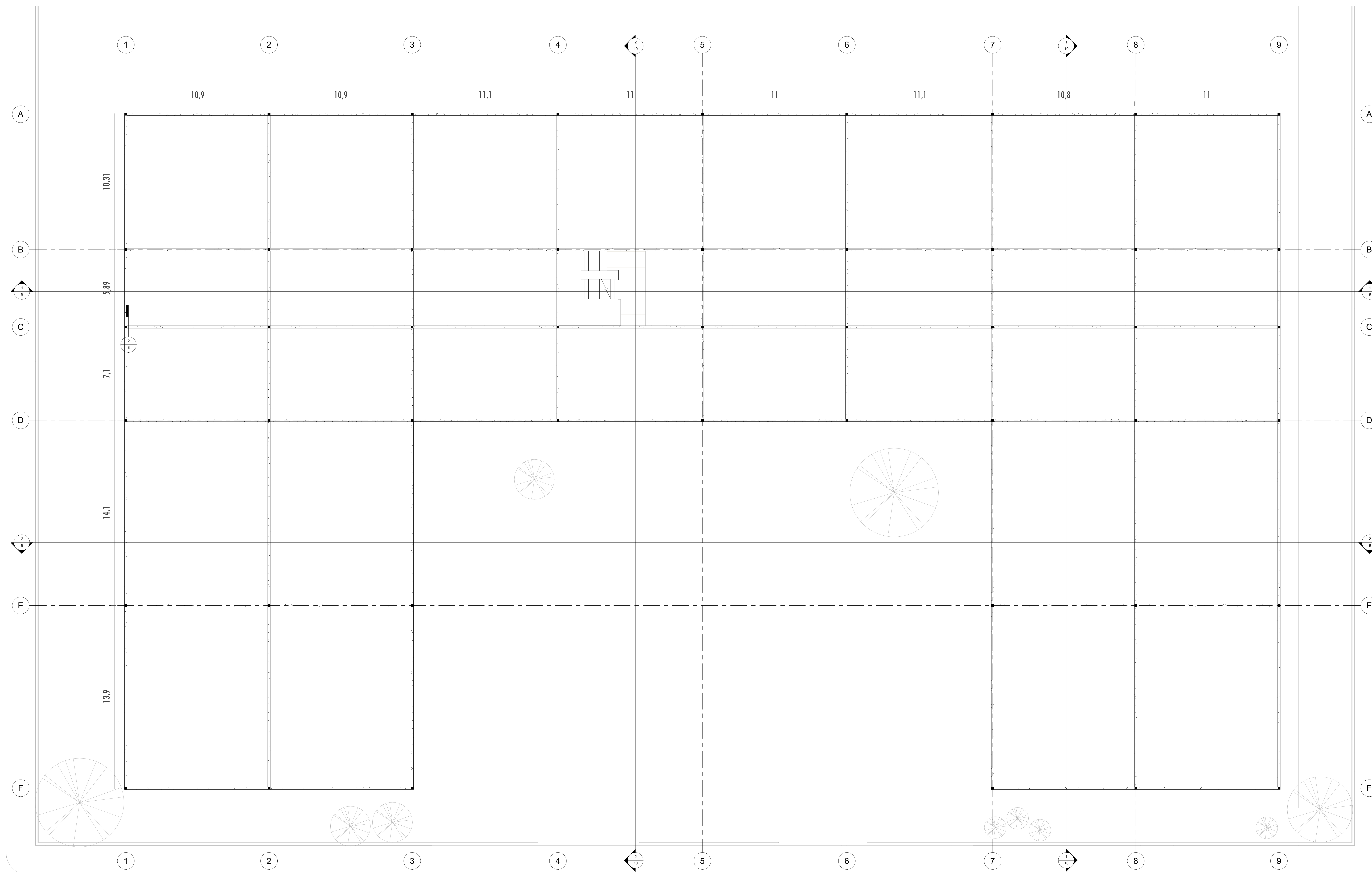
TABELA DE PORTAS						
CÓDIGO	TIPO	LARGURA	ALTURA	MATERIAL	QTD.	
P2	Porta de abrir - 1 folha	90	210	Madeira	1	
P3	Porta de abrir - 1 folha	70	210	Madeira	24	

No projeto estava delimitado que esses dois ambientes seriam banheiros, porém há painéis de vidro na parede inteira. Logo, coloquei um conjunto de paredes internas para bloquear a vista do lado externo e permitir privacidade nos sanitários.

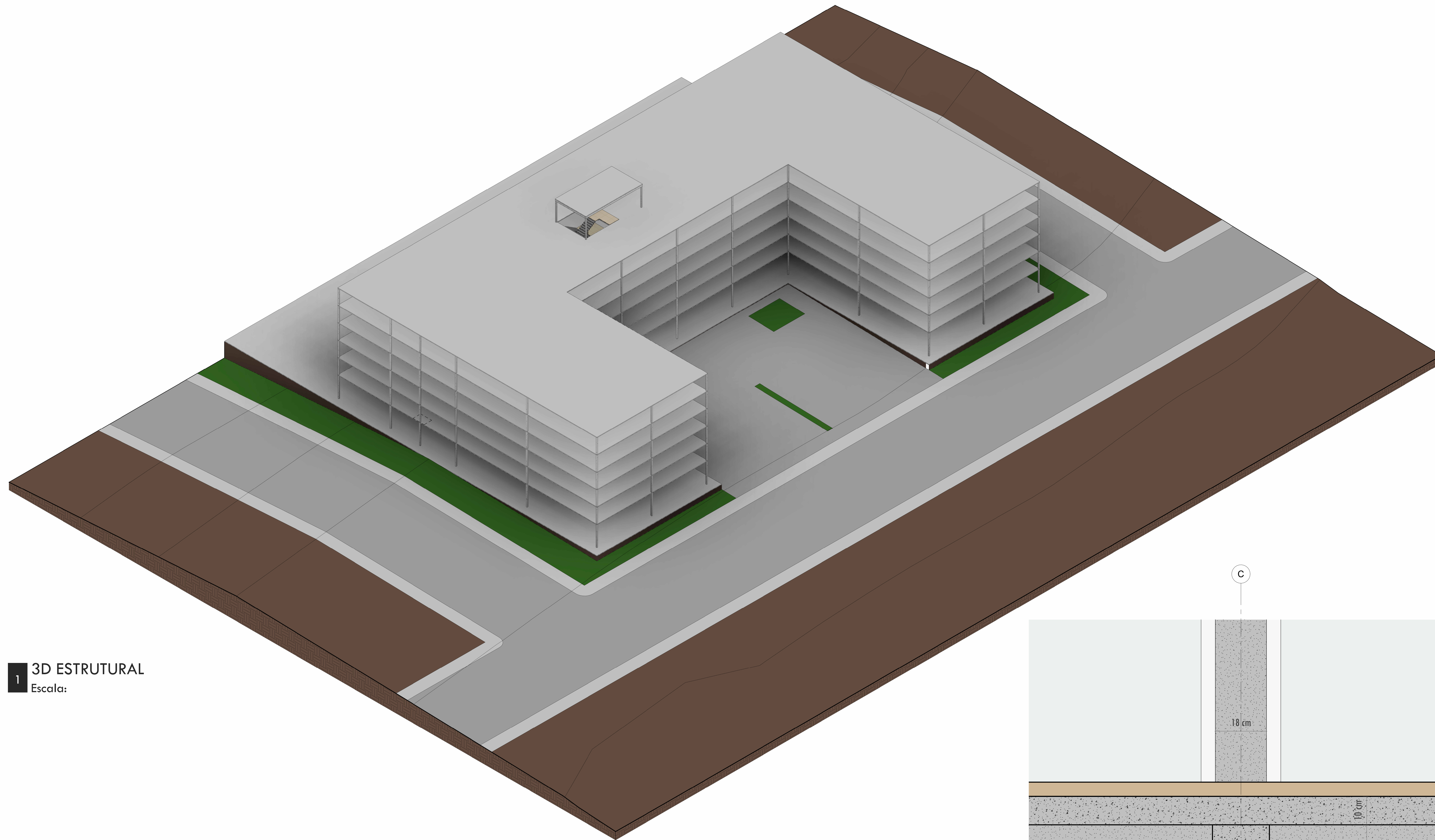




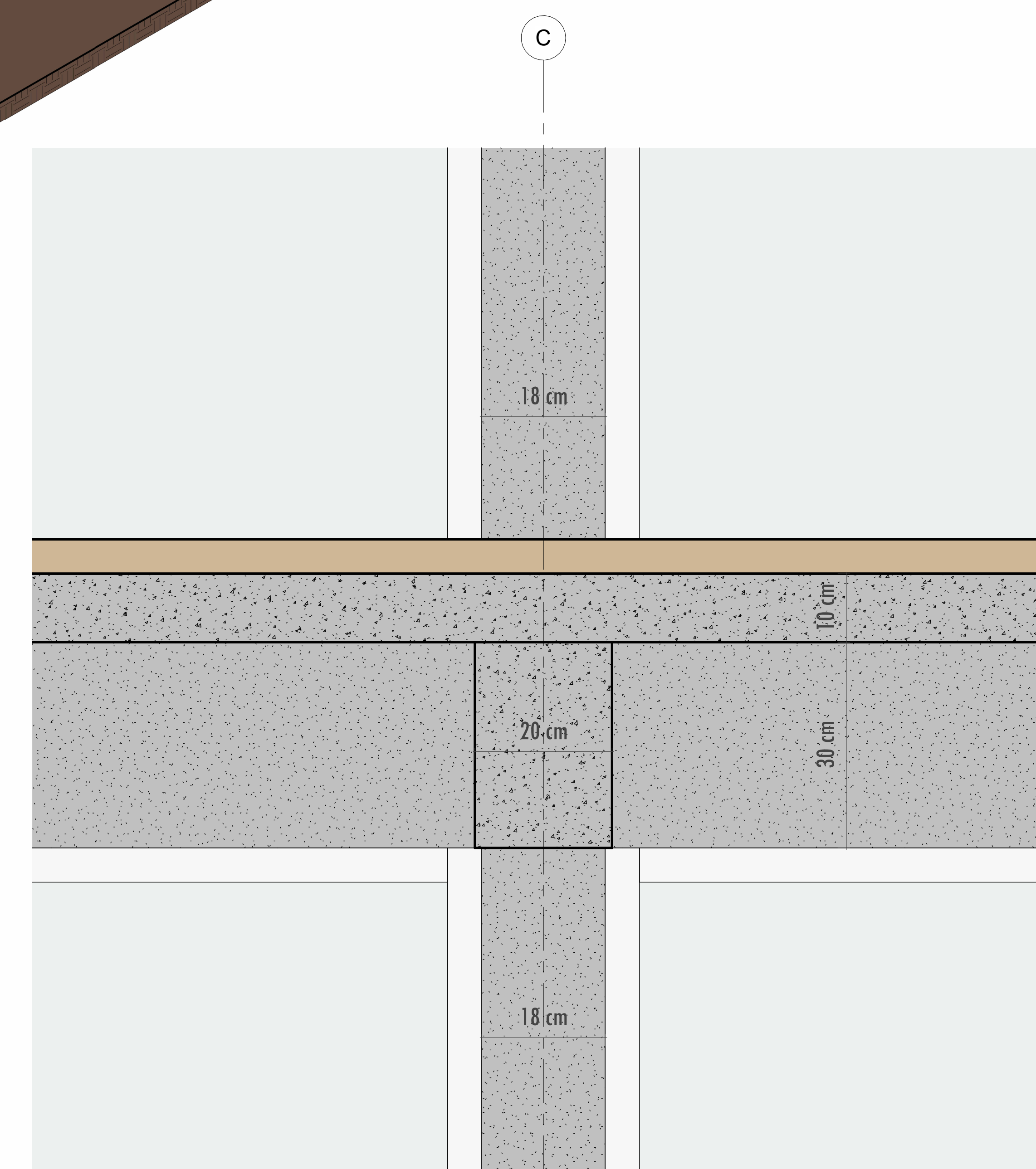
1 PLANTA TÉCNICA - COBERTURA
Escala: 1 : 100



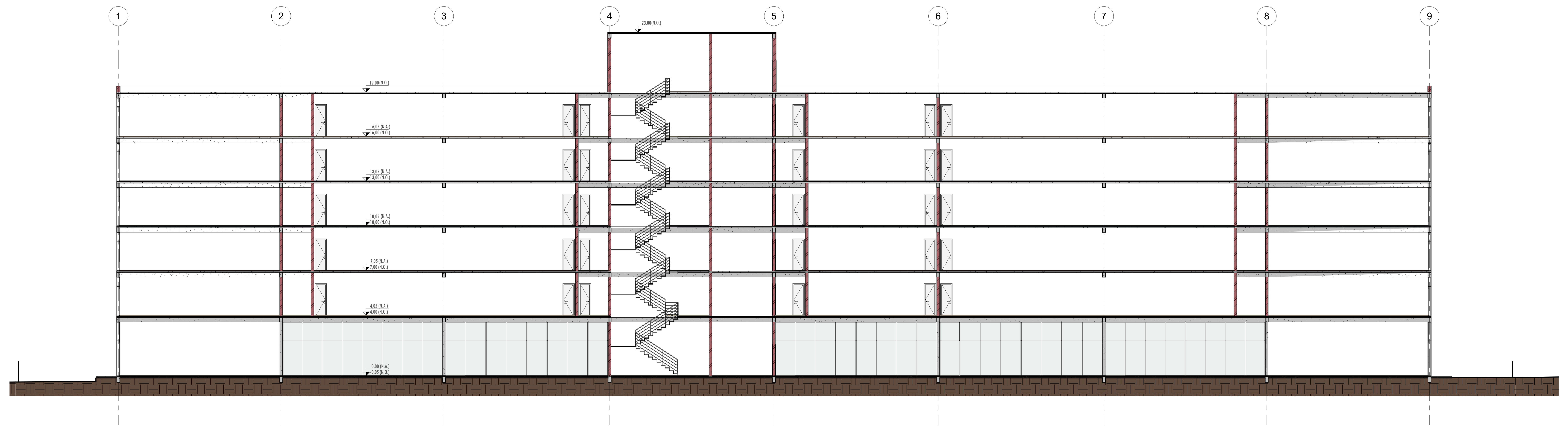
1 PAVIMENTO TIPO - ESTRUTURA
Escala: 1 : 100



1 3D ESTRUTURAL
Escala:



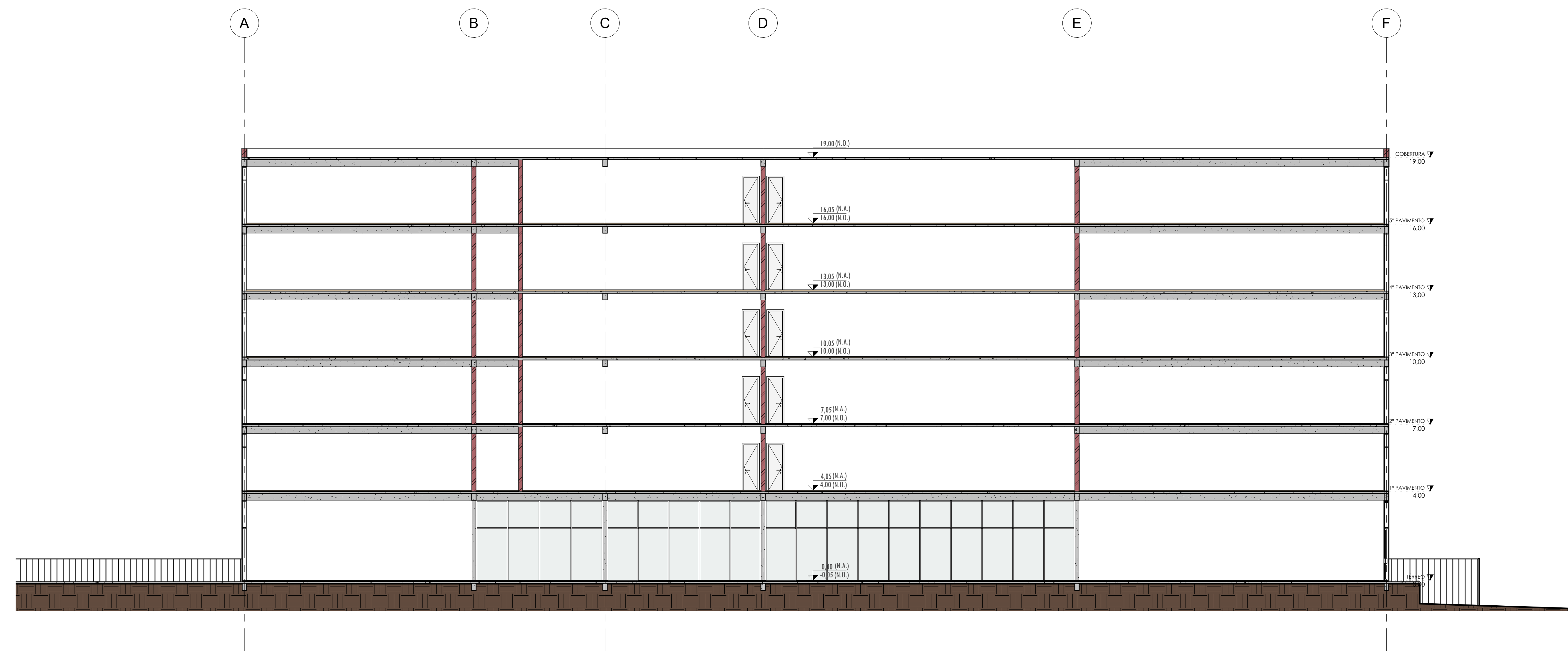
2 DETALHE DA ESTRUTURA
Escala: 1 : 5



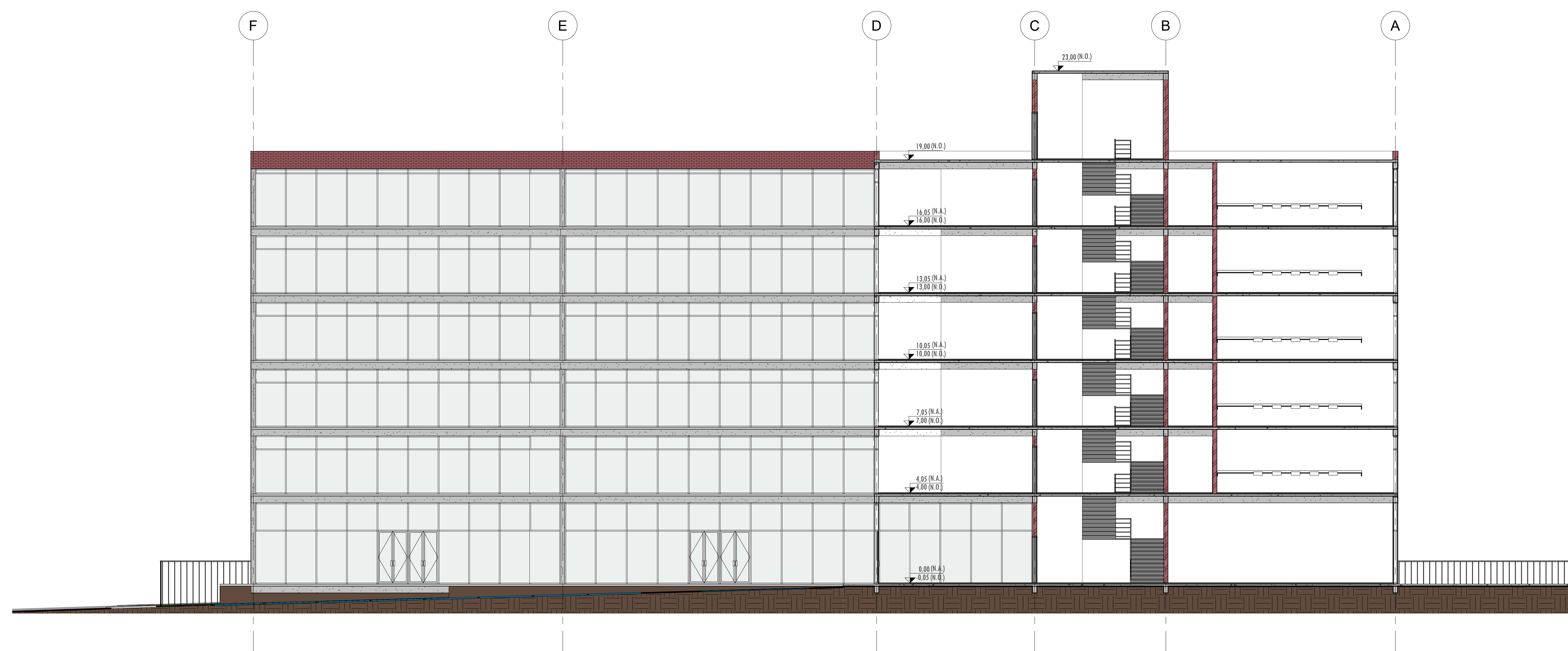
1 CORTE LONGITUDINAL 1
Escala: 1 : 100



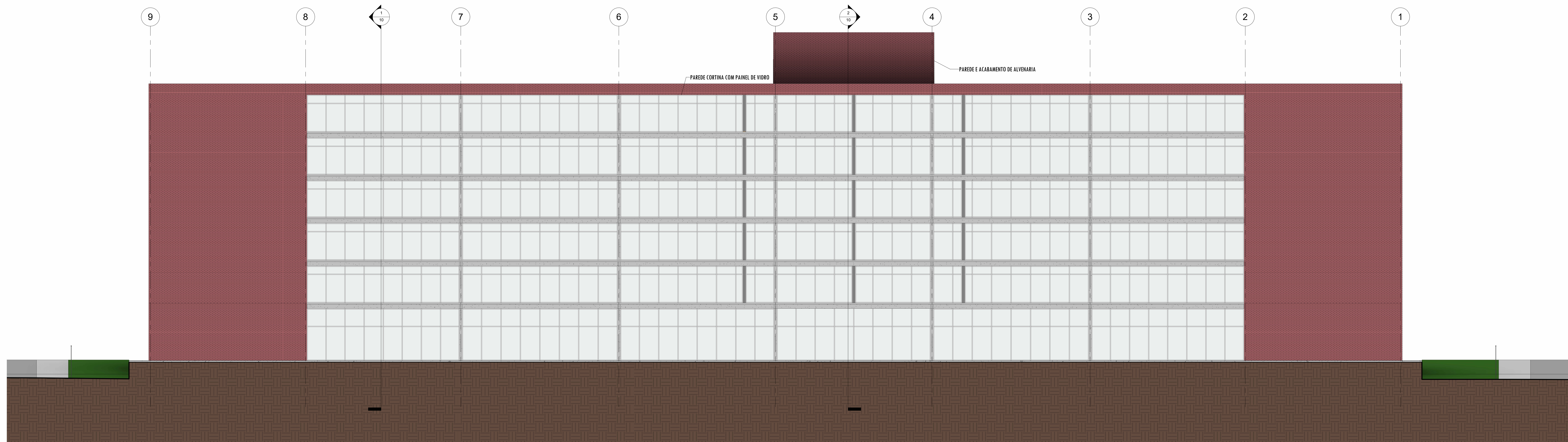
2 CORTE LONGITUDINAL 2
Escala: 1 : 100



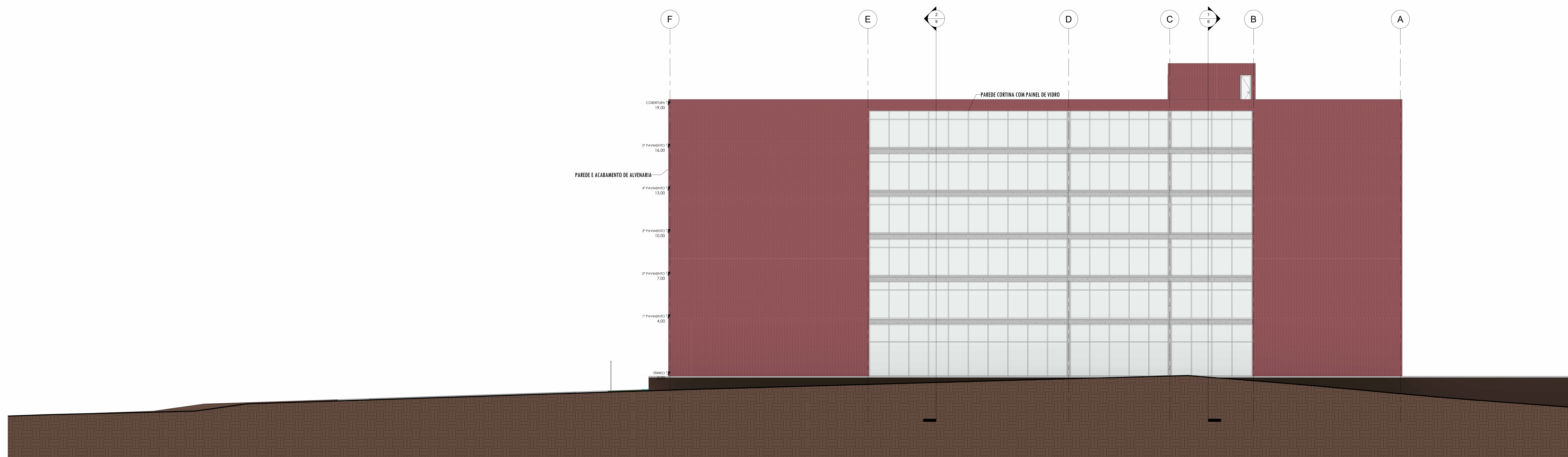
1 CORTE TRANSVERSAL 1
Escala: 1 : 100



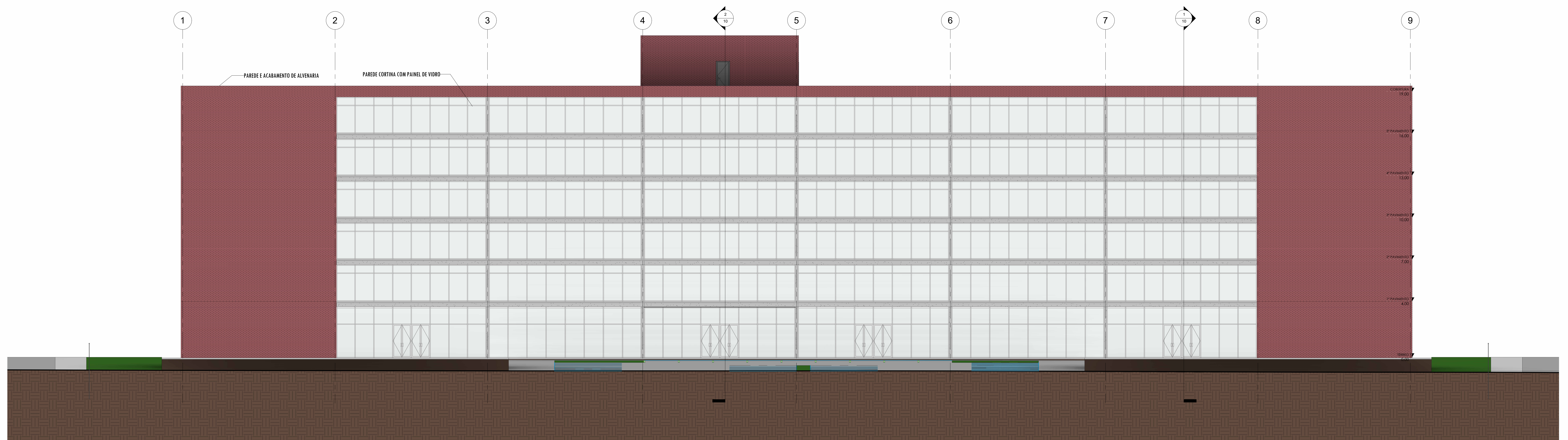
2 CORTE TRANSVERSAL 2
Escala: 1 : 100



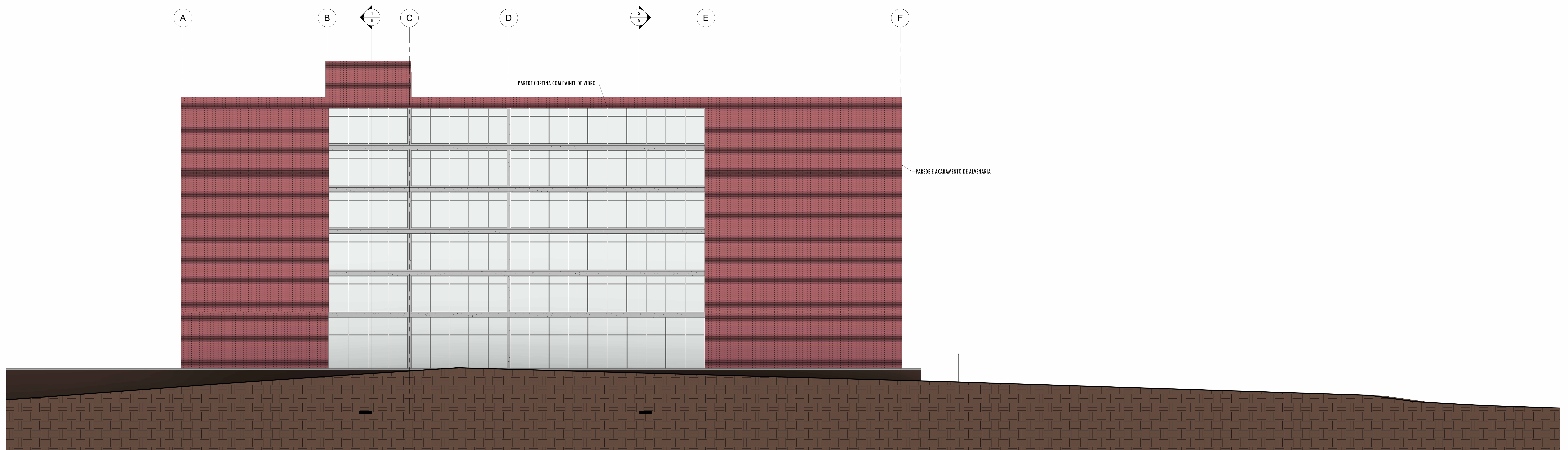
1 ELEVAÇÃO NORTE
Escala: 1 : 100



2 ELEVAÇÃO LESTE
Escala: 1 : 100



1 ELEVÇÃO SUL
Escala: 1 : 100



2 ELEVÇÃO OESTE
Escala: 1 : 100

