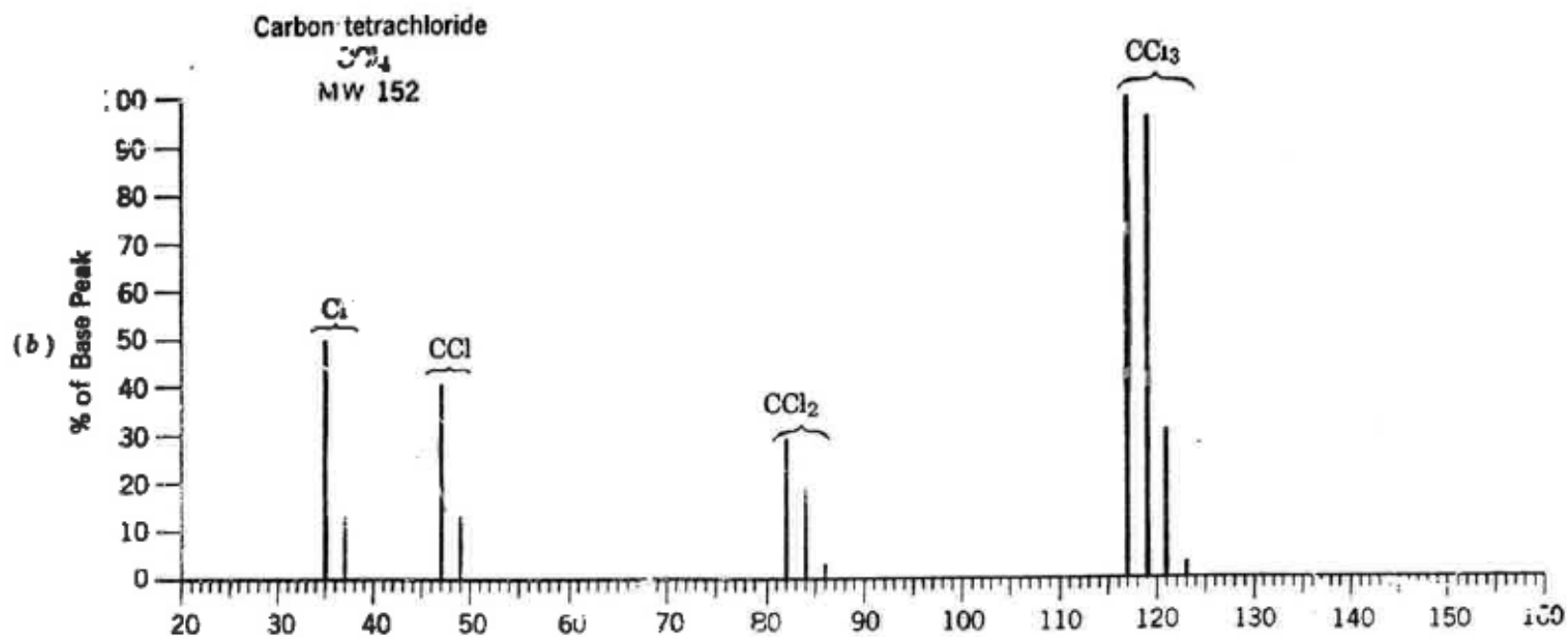


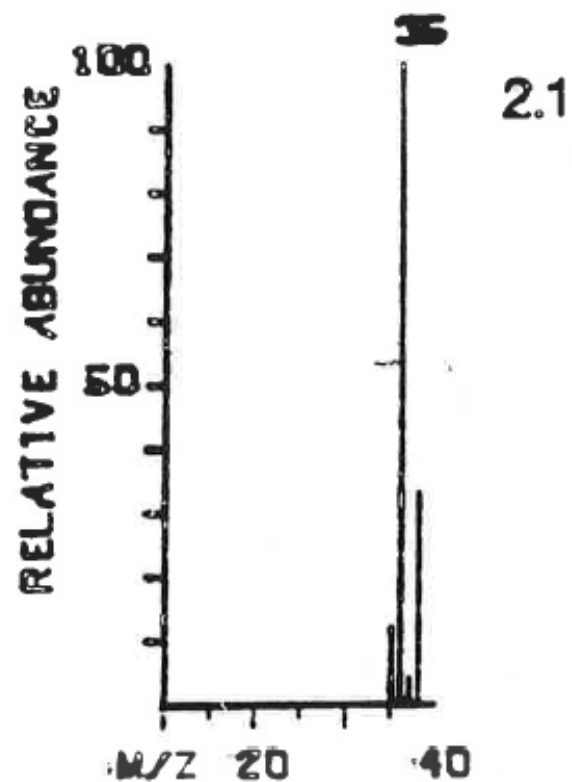
Espectro de massas do CCl_4

FIGURE 2.16(a). Peaks in the molecular ion region of bromo and chloro compounds. Contributions due to C, H, N, and O are usual, small compared to those for Br and Cl.



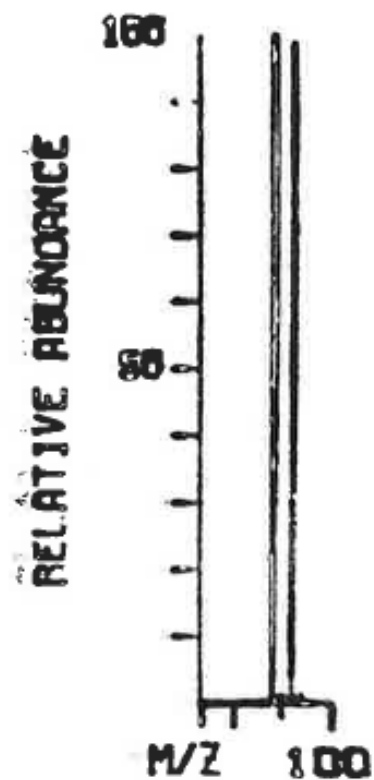
Unknown 2.1

<i>m/z</i>	Rel. abund.
35	12.
36	100.
37	4.1
38	33.



Unknown 2.2

<i>m/z</i>	Rel. abund.
94	100.
95	1:1
96	96.
97	1:1



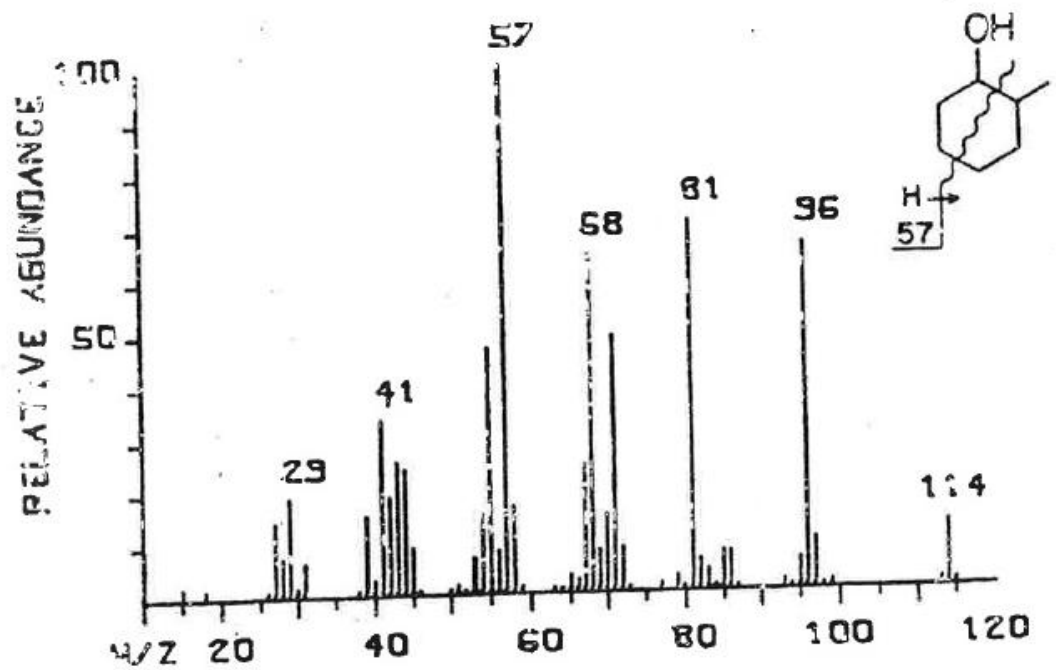


Figure 9F. Mass spectrum of 2-methylcyclohexanol.

