

Instituto de Química de São Carlos
Universidade de São Paulo

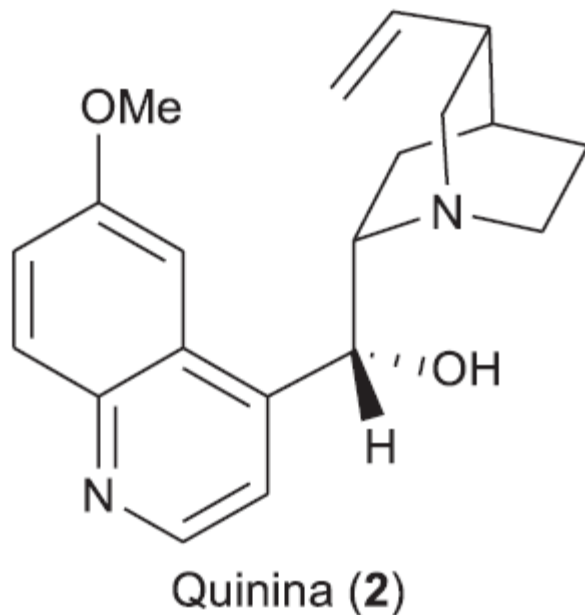
Espectrofluorimetria molecular (FL): determinação de quinino em água tônica

Disciplina: Análise Instrumental I

SQM0415



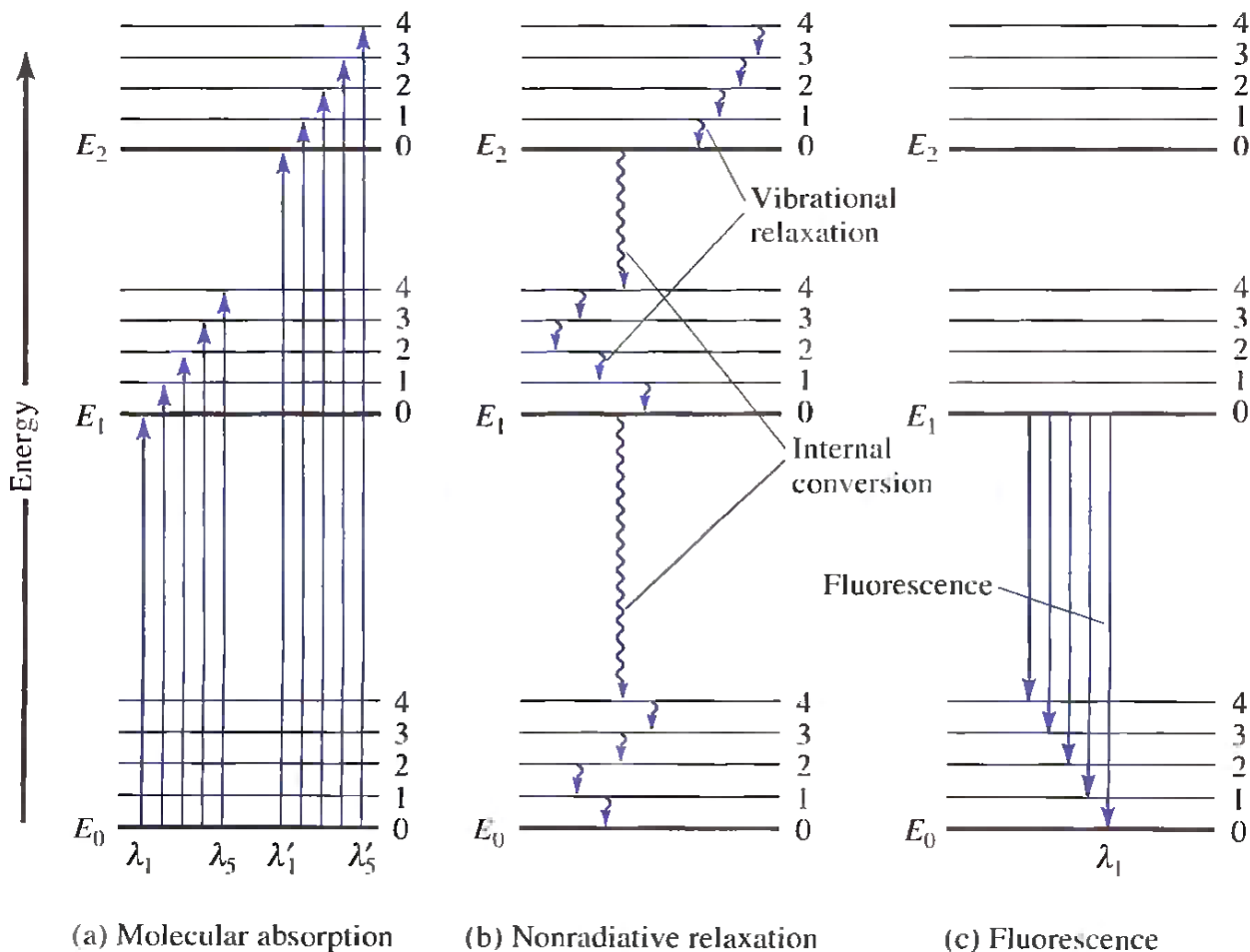
Cinchona calisaya.
Ilustração do botânico
alemão Hermann Adolf
Köhler (séc XIX) e sua
casca (à dir.).



Fontes:

http://qnint.sbg.org.br/gni/popup_visualizarMolecula.php?id=UIXUMIMBljB4Rn_m0ST3yb_87jXrj94kEb4QqBIFCyE54I7sRatdUJiTnjLS1u8ExbawQazl3q283EQN4YP5Fw==

http://atualizadosp.blogspot.com.br/2010/08/curiosidades_06.html



► Many unsubstituted aromatic compounds fluoresce.



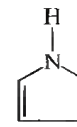
pyridine



furan



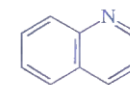
thiophene



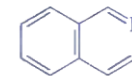
pyrrole

Figure 27-3 Typical aromatic molecules that do not fluoresce.

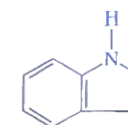
► Rigid molecules or complexes tend to fluoresce.



quinoline

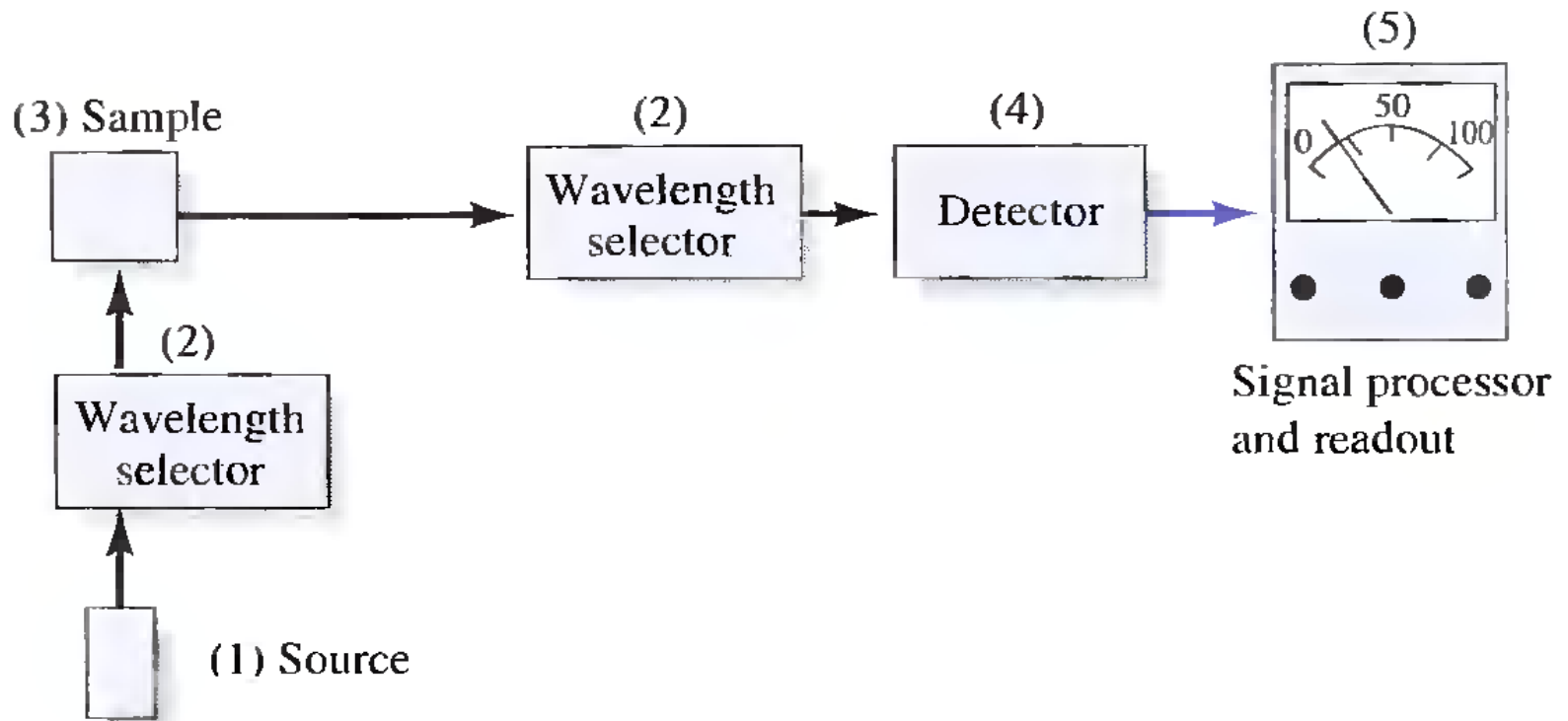


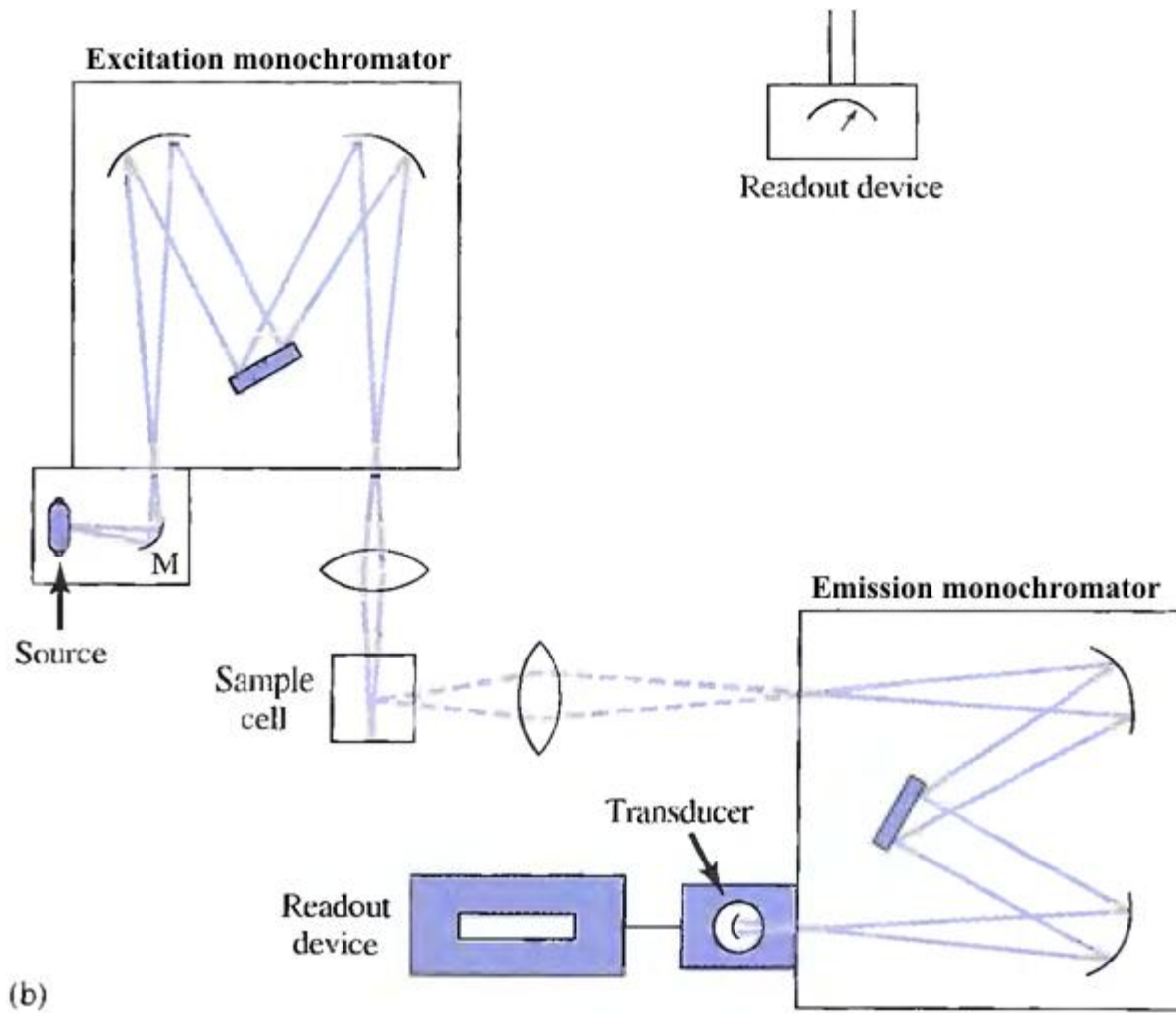
isoquinoline



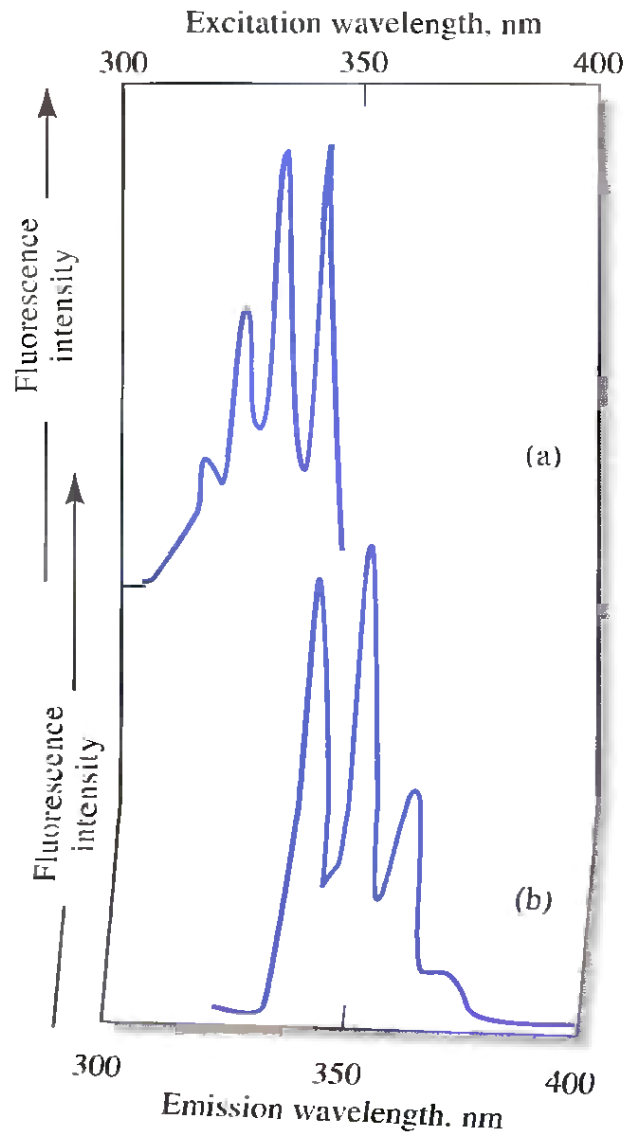
indole

Figure 27-4 Typical aromatic compounds that fluoresce.





Fonte: SKOOG, D.A.; et al. Fundamentals of Analytical Chemistry, 8 ed.



Fonte: SKOOG, D.A.; et al. Fundamentals of Analytical Chemistry, 8 ed.