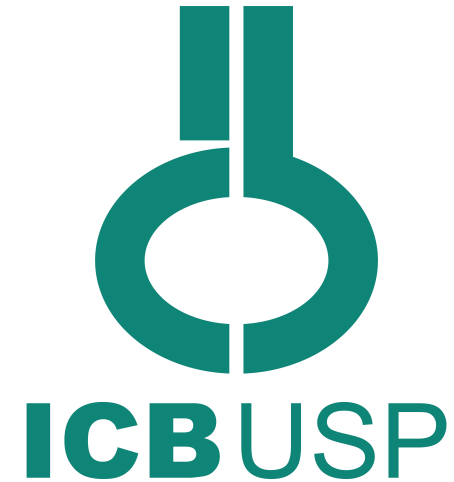


Departamento  
de Anatomia

ICB-USP



# Sistema Reprodutor Feminino

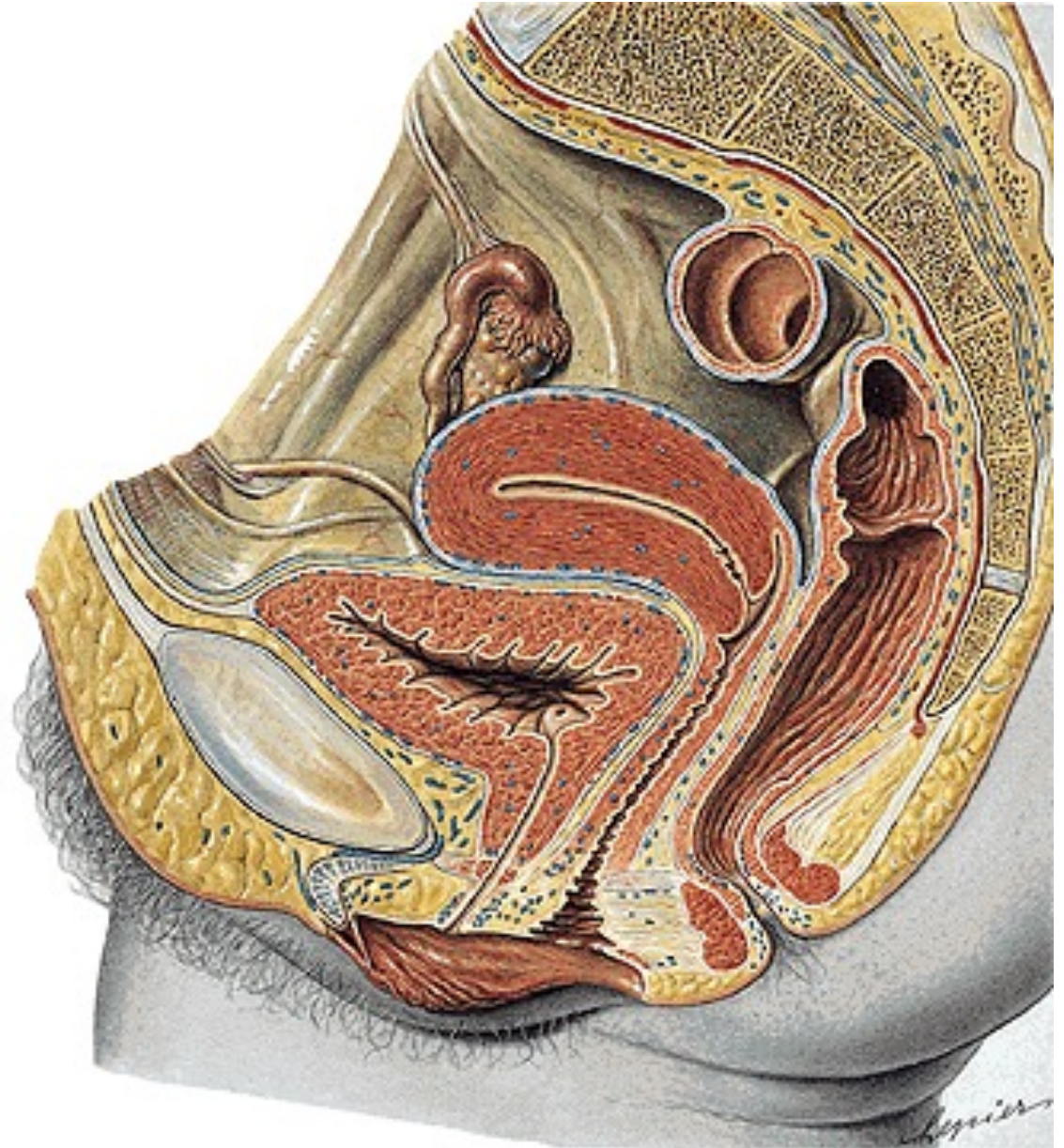
Profa. Dra. Simone Cristina Motta

Departamento de Anatomia

ICB - USP

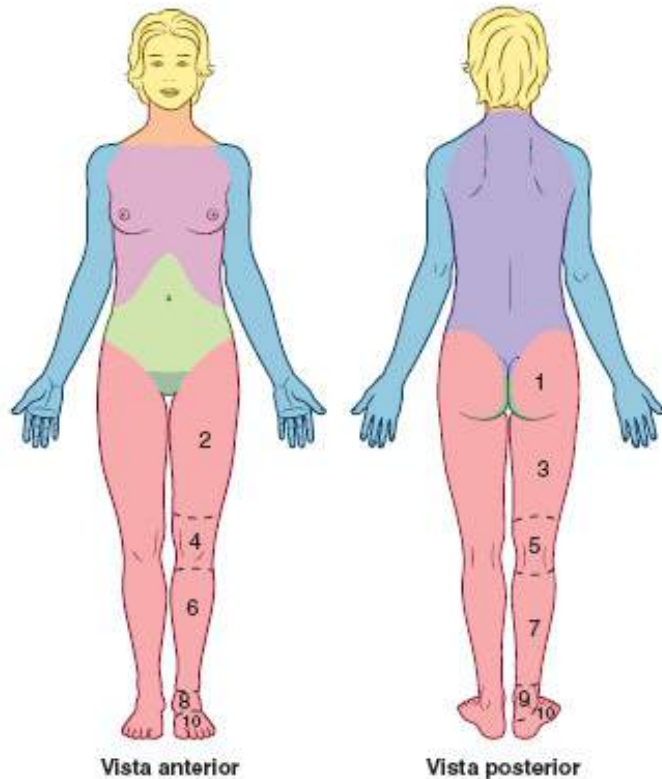
# Órgãos

- Ovários
- Tubas uterinas
- Útero
- Vagina
- Órgãos genitais externos

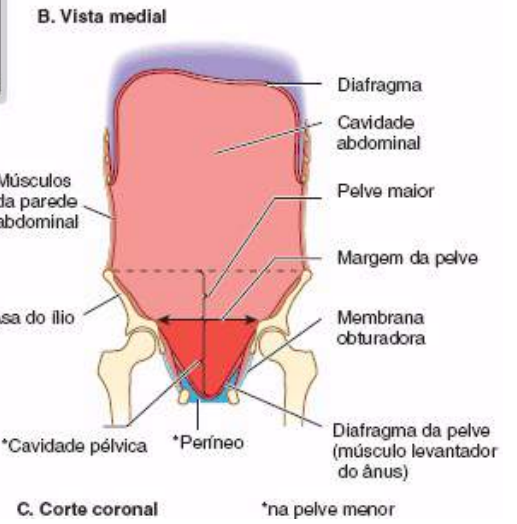
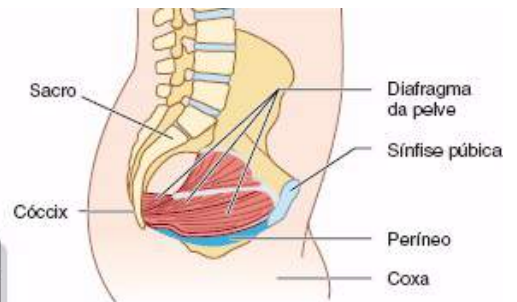
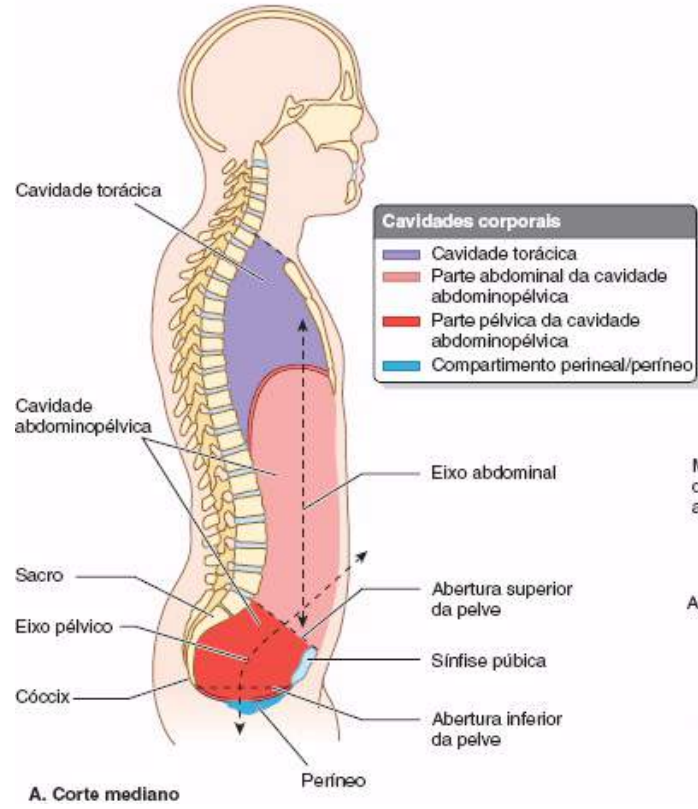


# Cavidade pélvica e períneo

Principais partes do corpo		
Cabeça	Dorso	Membro inferior
Pescoço	Abdome	Membro superior
Tórax	Pelve/períneo	

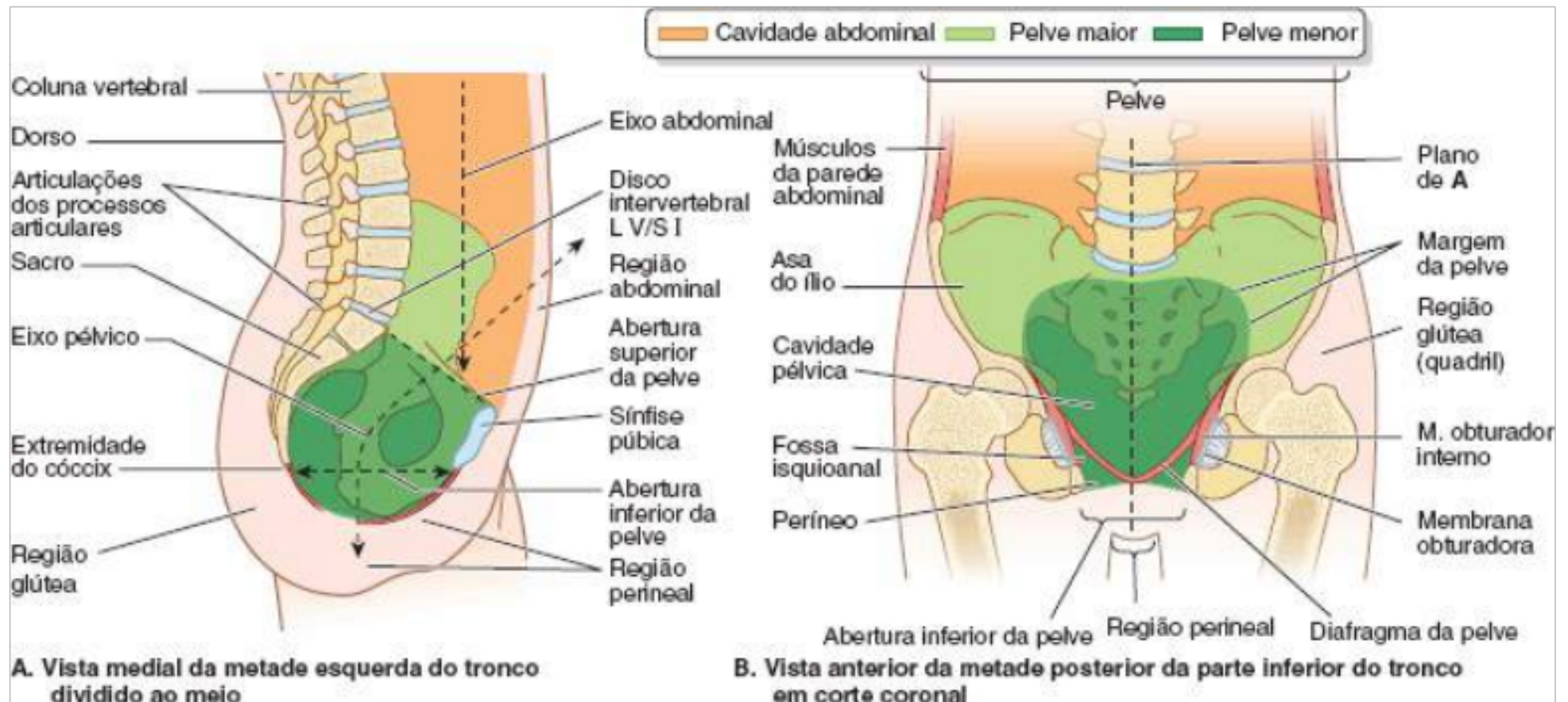


Regiões do membro inferior	
1 = Região glútea	7 = Região crural posterior
2 = Região femoral anterior	8 = Região talocrural anterior (tomozele)
3 = Região femoral posterior	9 = Região talocrural posterior
4 = Região genicular anterior	10 = Região do pé
5 = Região genicular posterior	
6 = Região crural anterior	



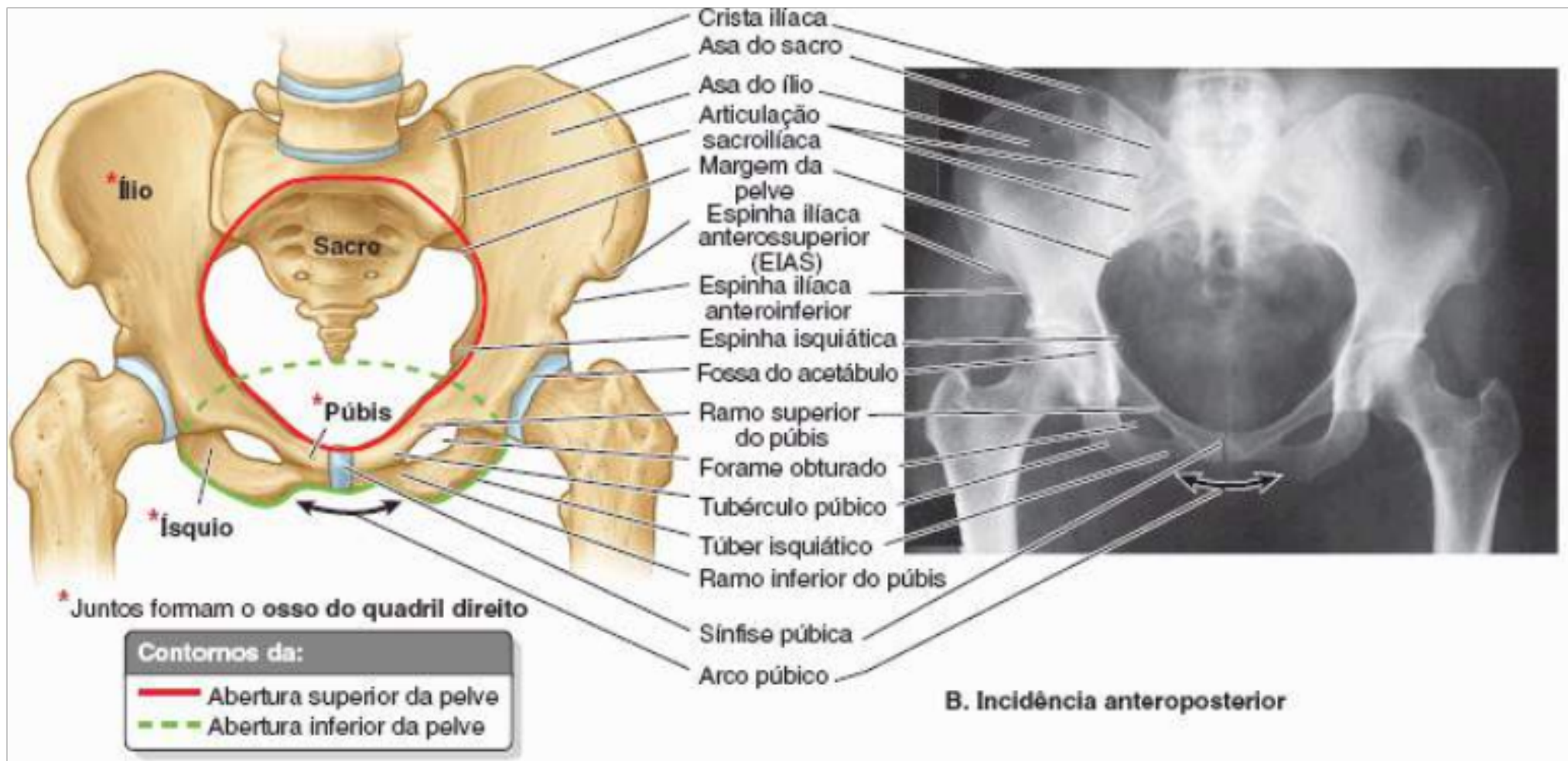
Moore, Anatomia Orientada para a Clínica, 7ª ed.



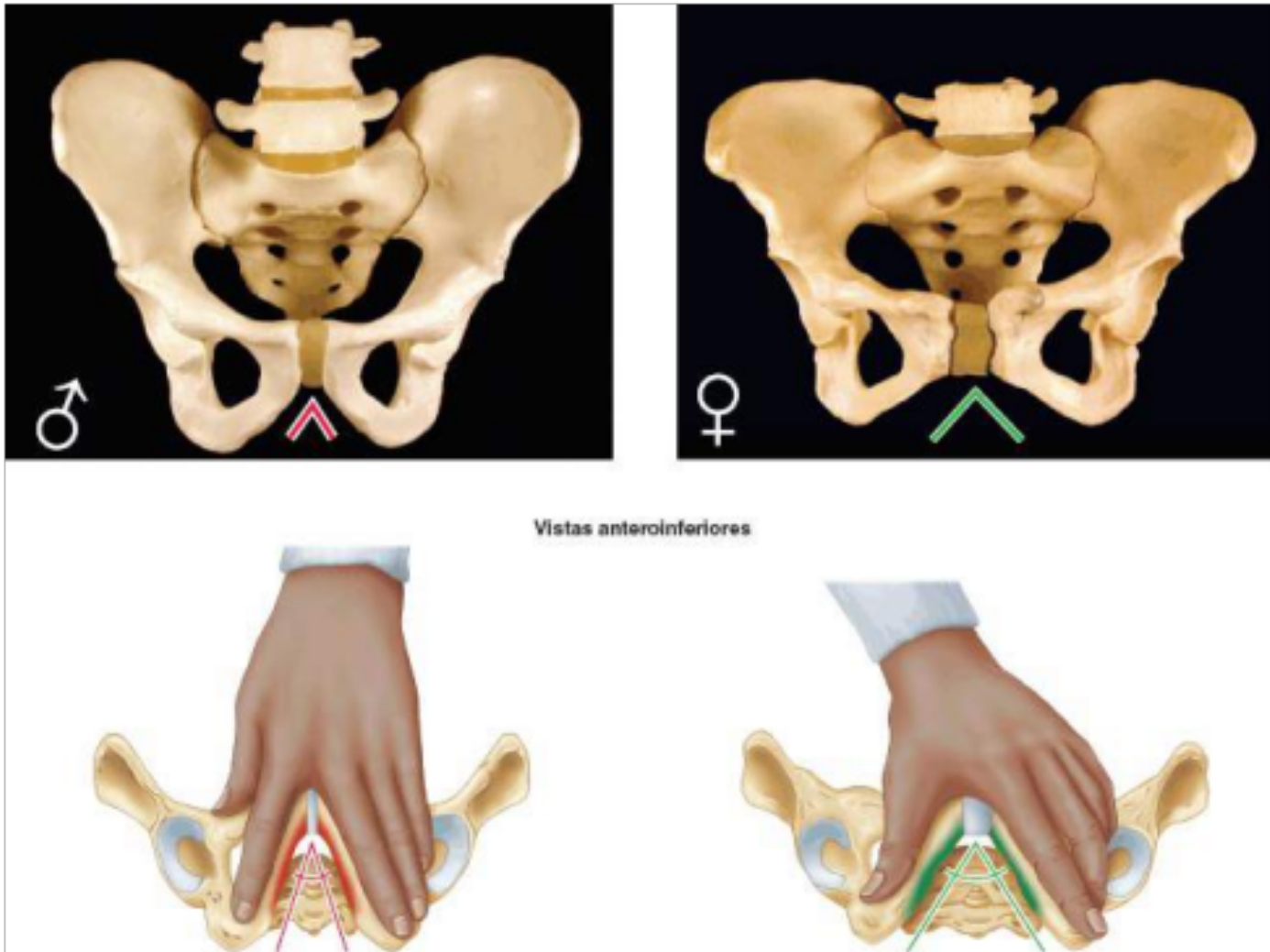


Moore, Anatomia Orientada para a Clínica, 7ª ed.



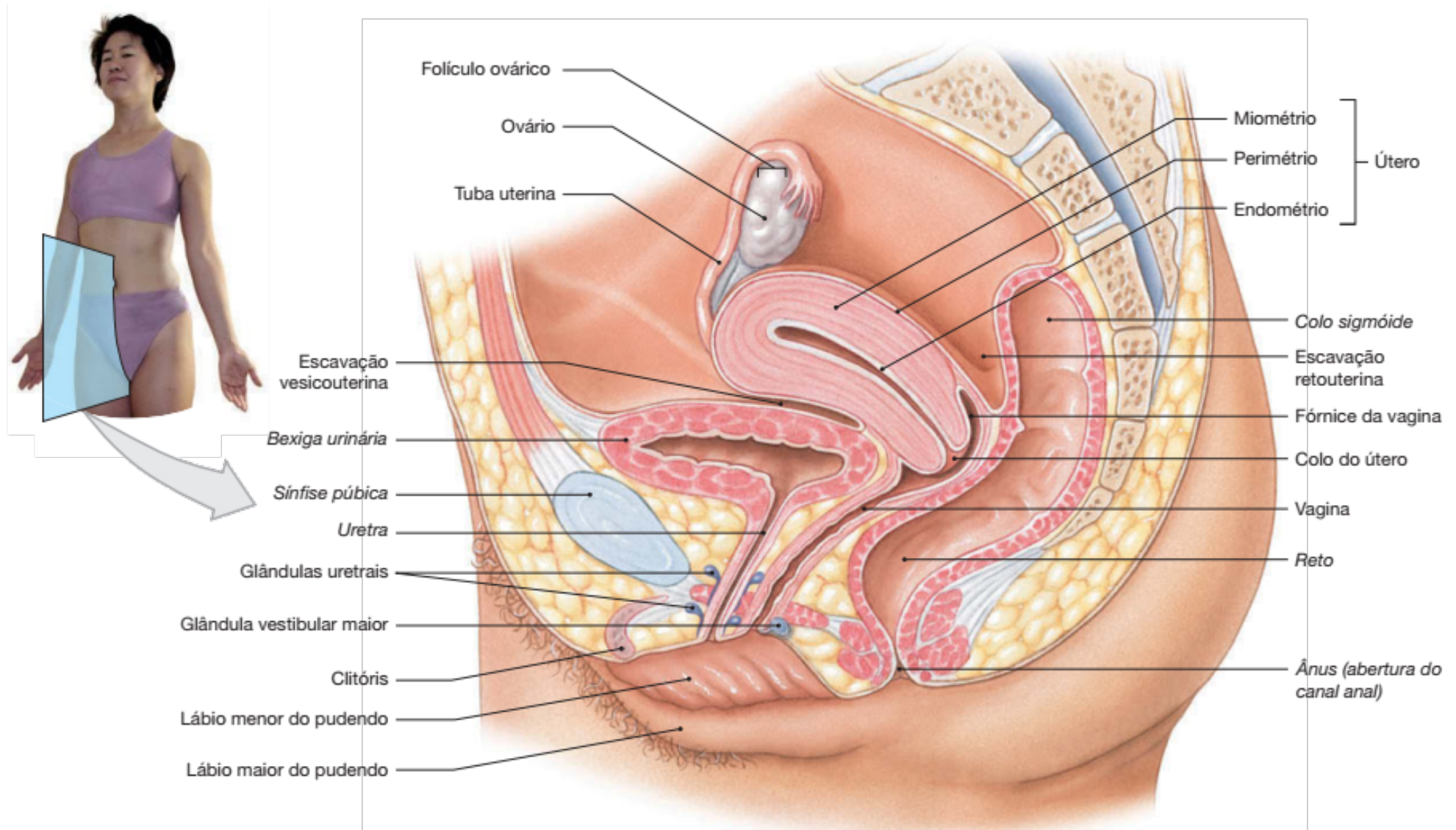


Moore, Anatomia Orientada para a Clínica, 7<sup>a</sup> ed.

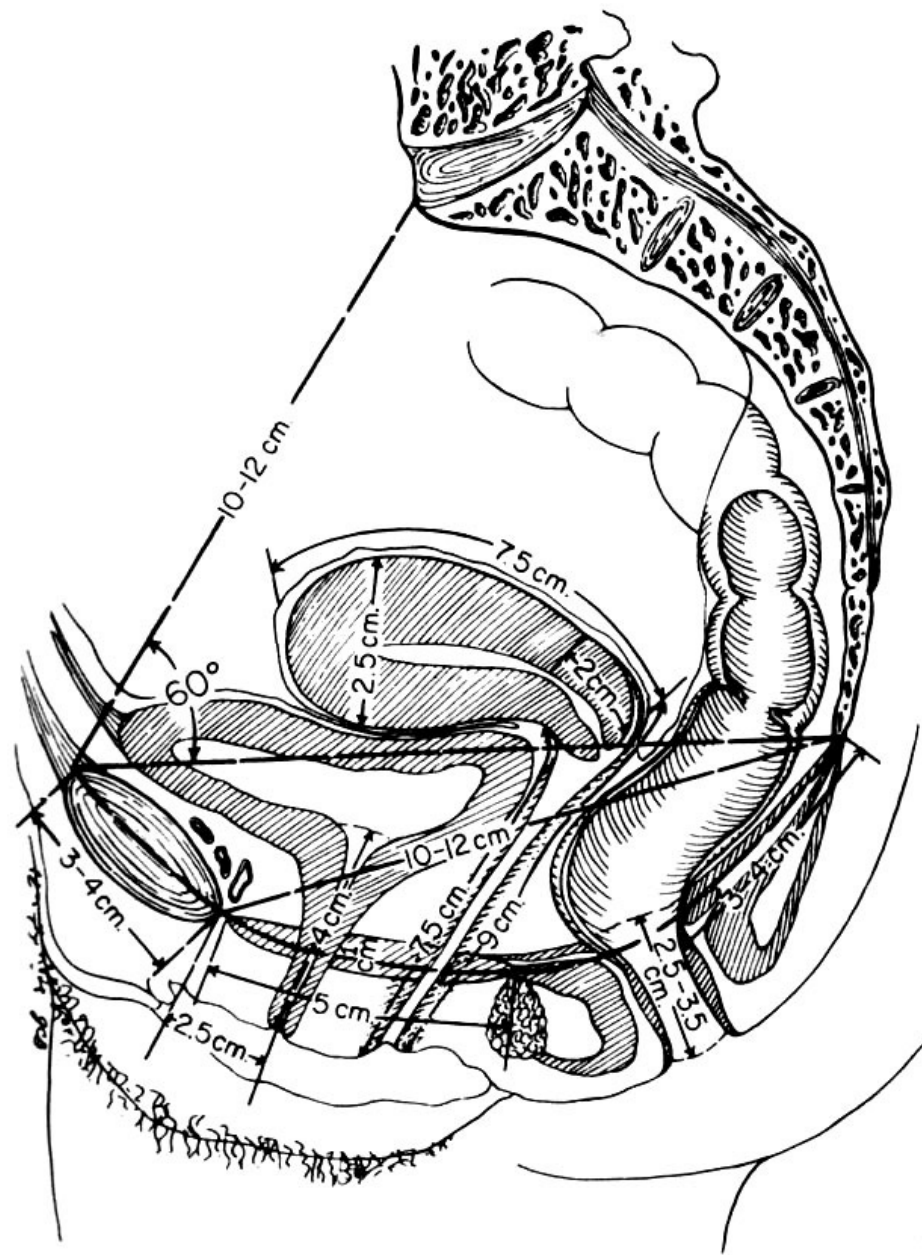


Moore, Anatomia Orientada para a Clínica, 7<sup>a</sup> ed.

# Pelve feminina

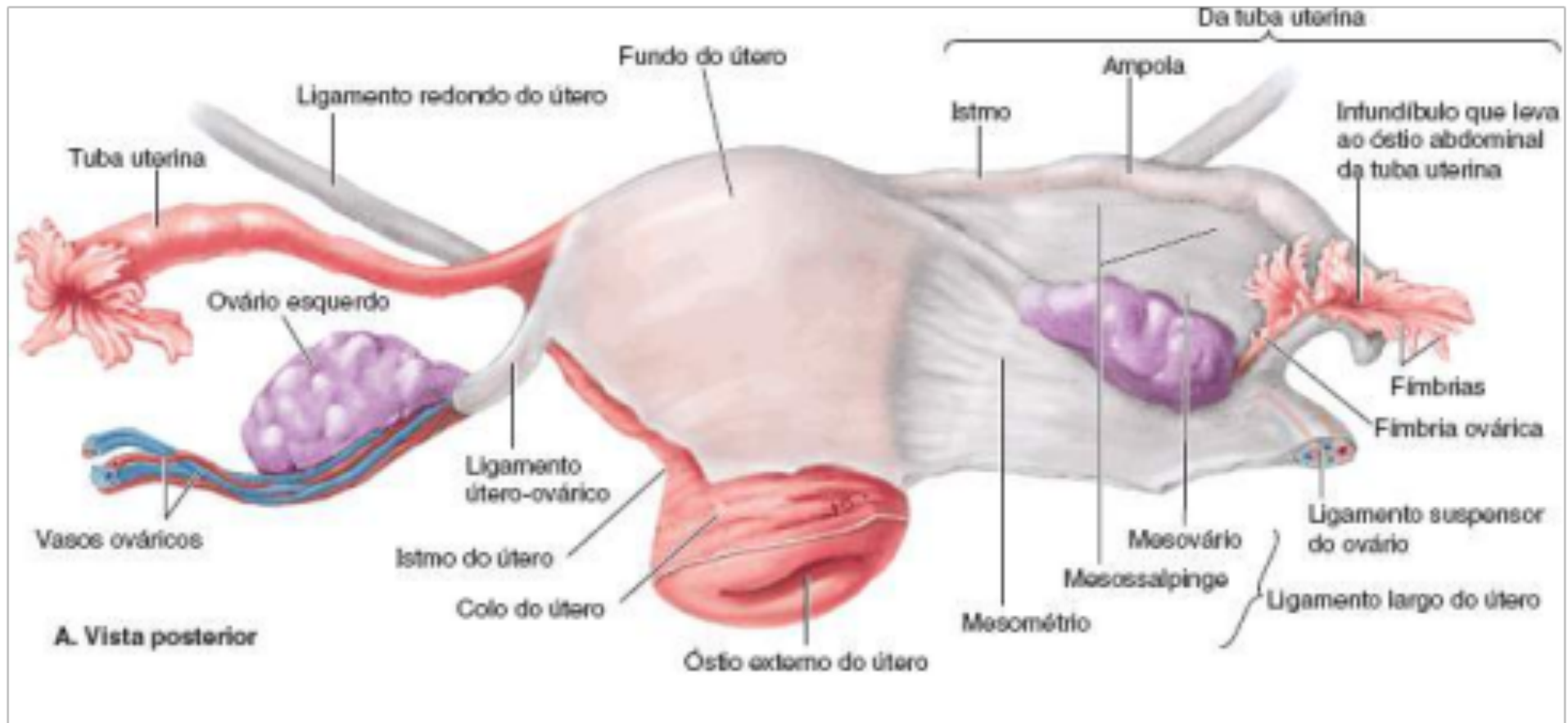




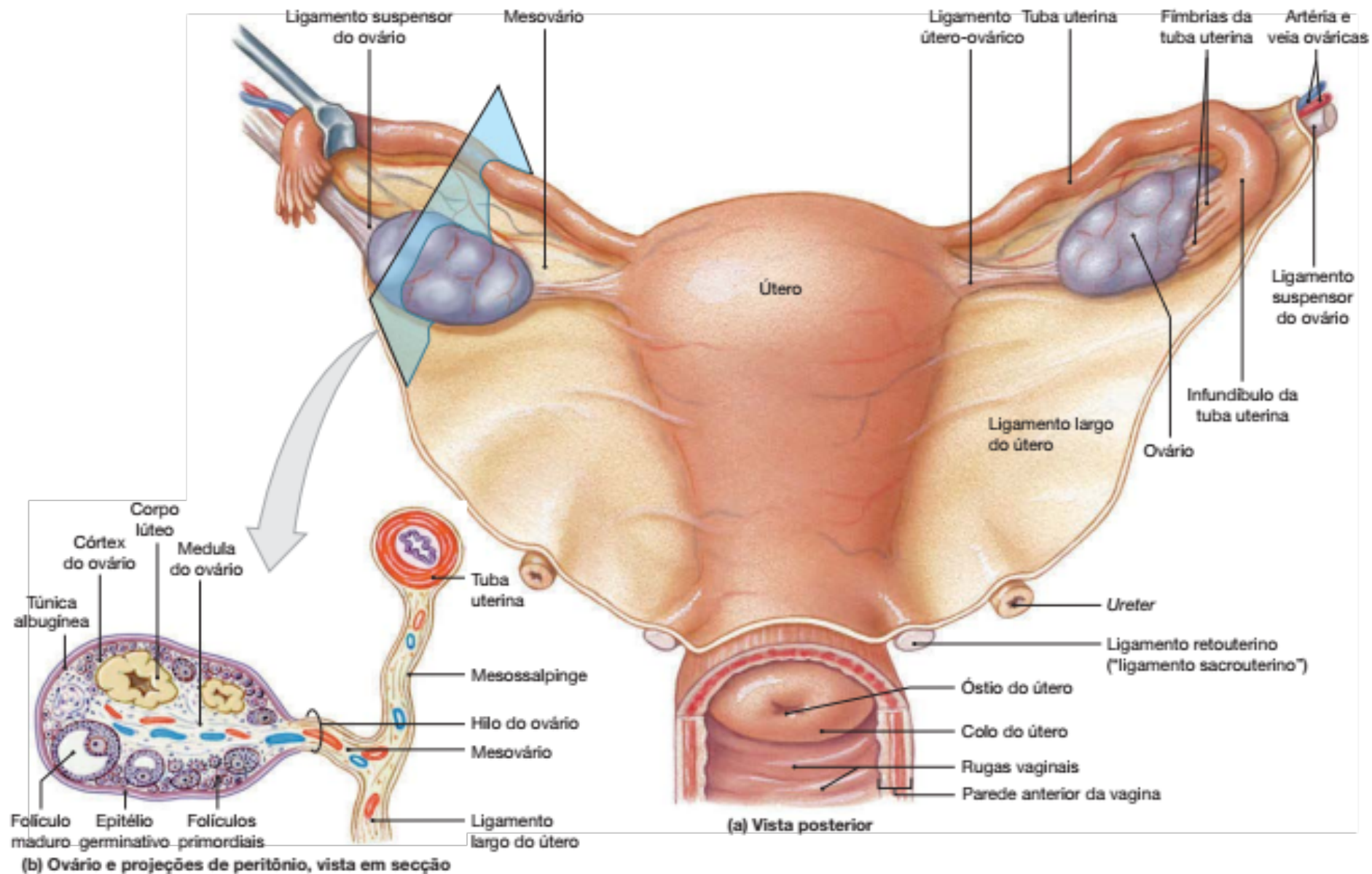


Os planos, as dimensões e relações de órgãos em um corte mediano da pelve feminina.

# Comportamento do Peritônio na cavidade pélvica

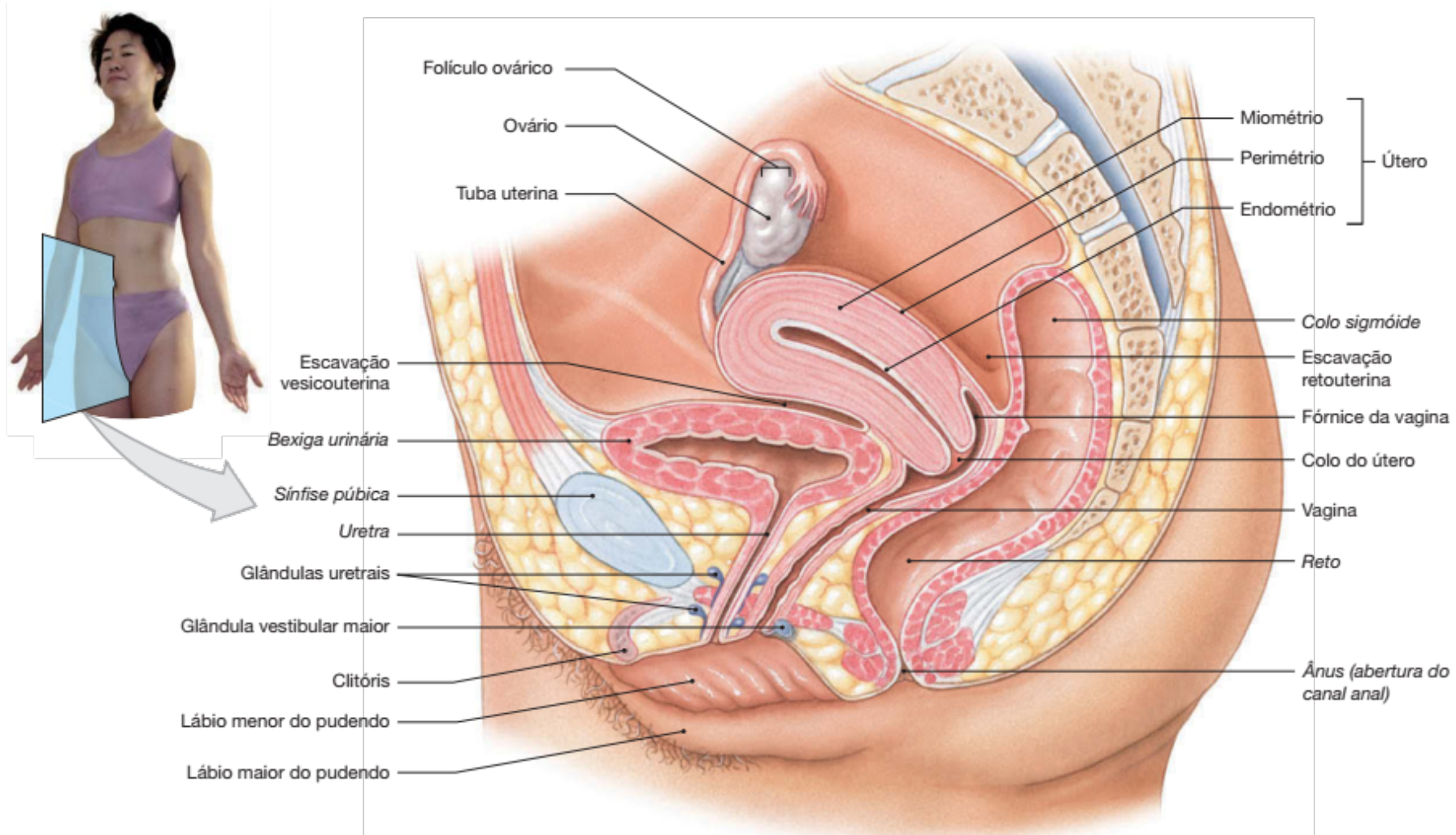


Moore, Anatomia Orientada para a Clínica, 7ª ed.





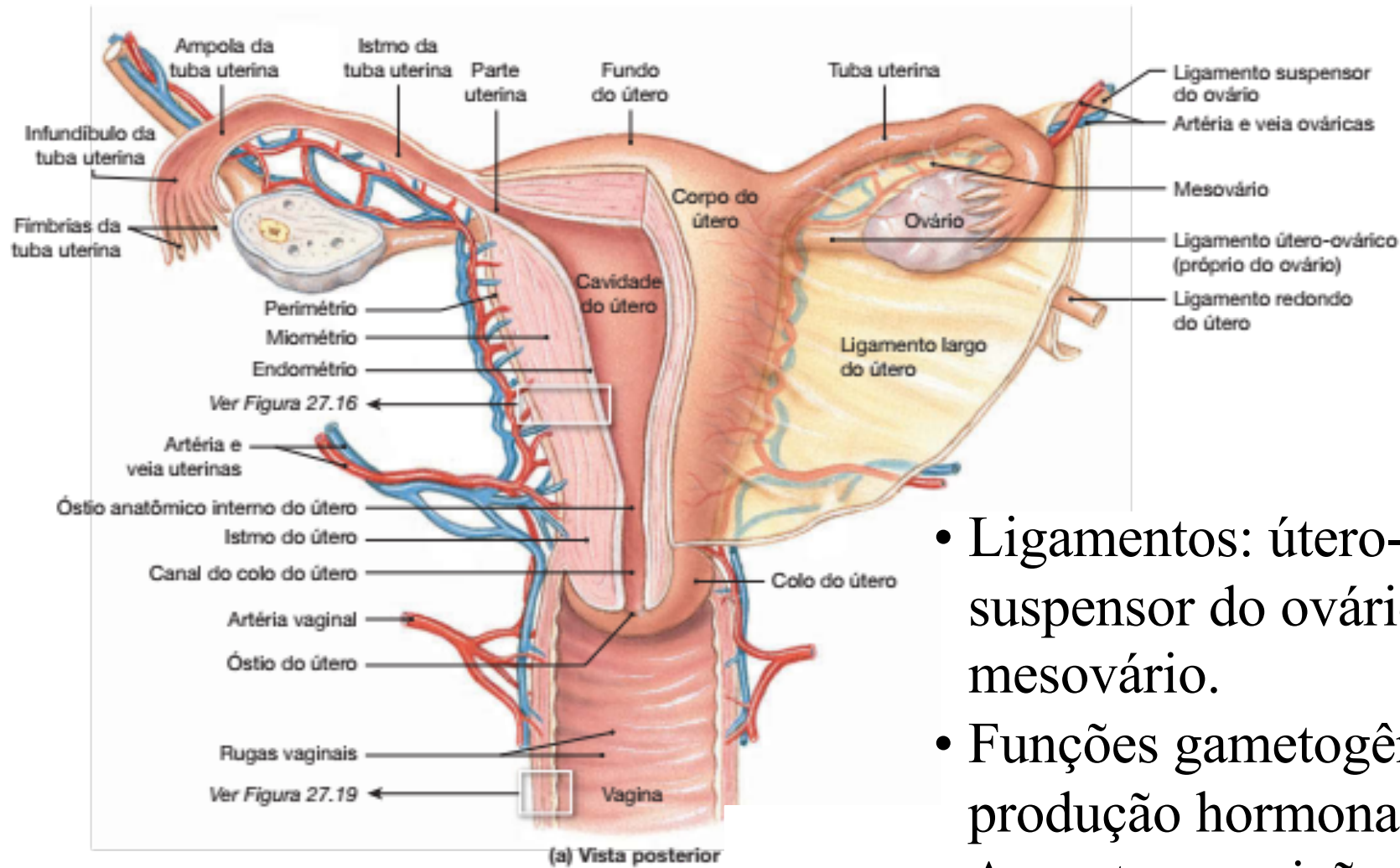
# Comportamento do Peritônio na cavidade pélvica



Martini, Timmons e Tallitsh (2009)

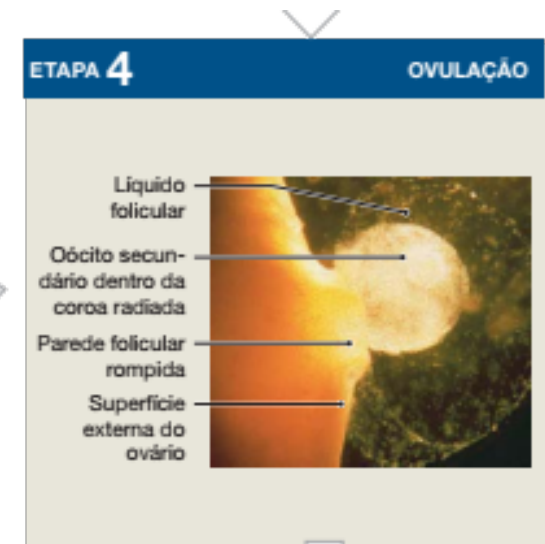
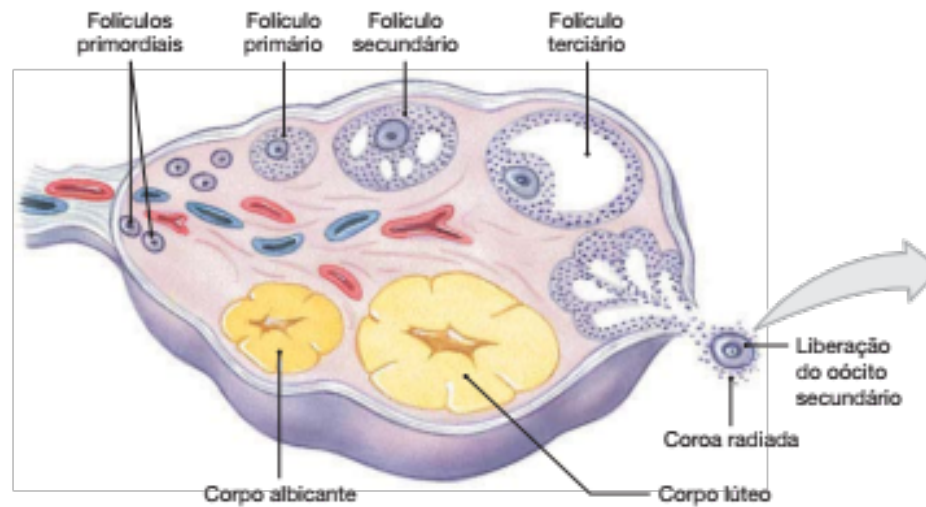
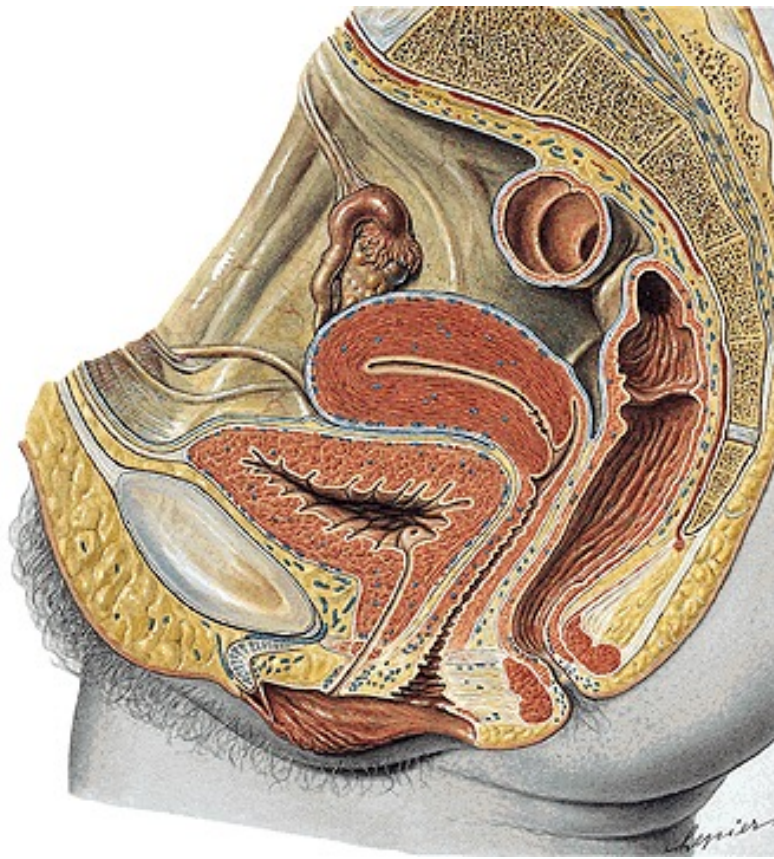
Escavações vesicouterina e retouterina

# Ovários



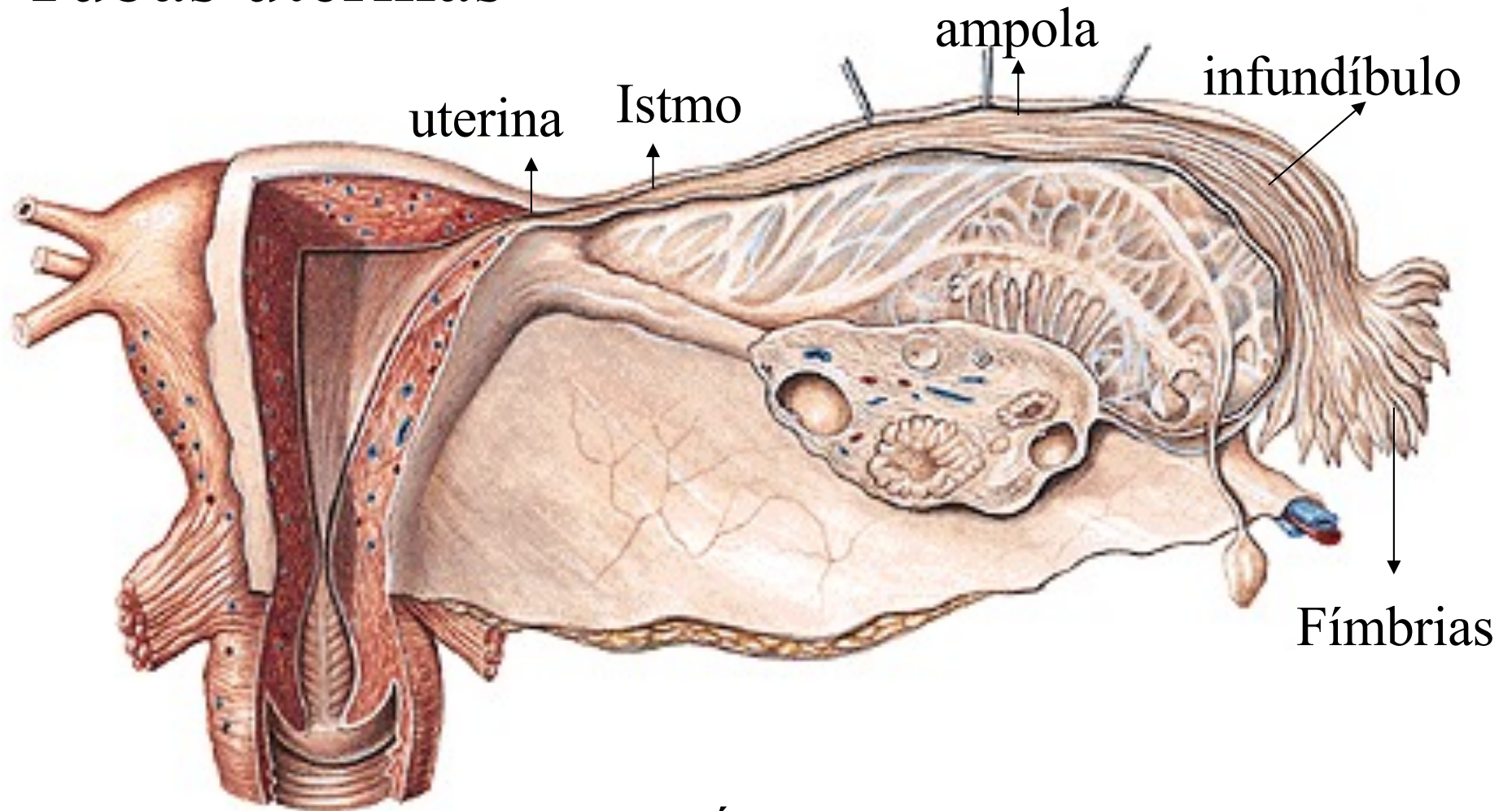
- Ligamentos: útero-ovárico, suspensor do ovário e mesovário.
- Funções gametogênica e produção hormonal.
- Aspecto e posição.







# Tubas uterinas

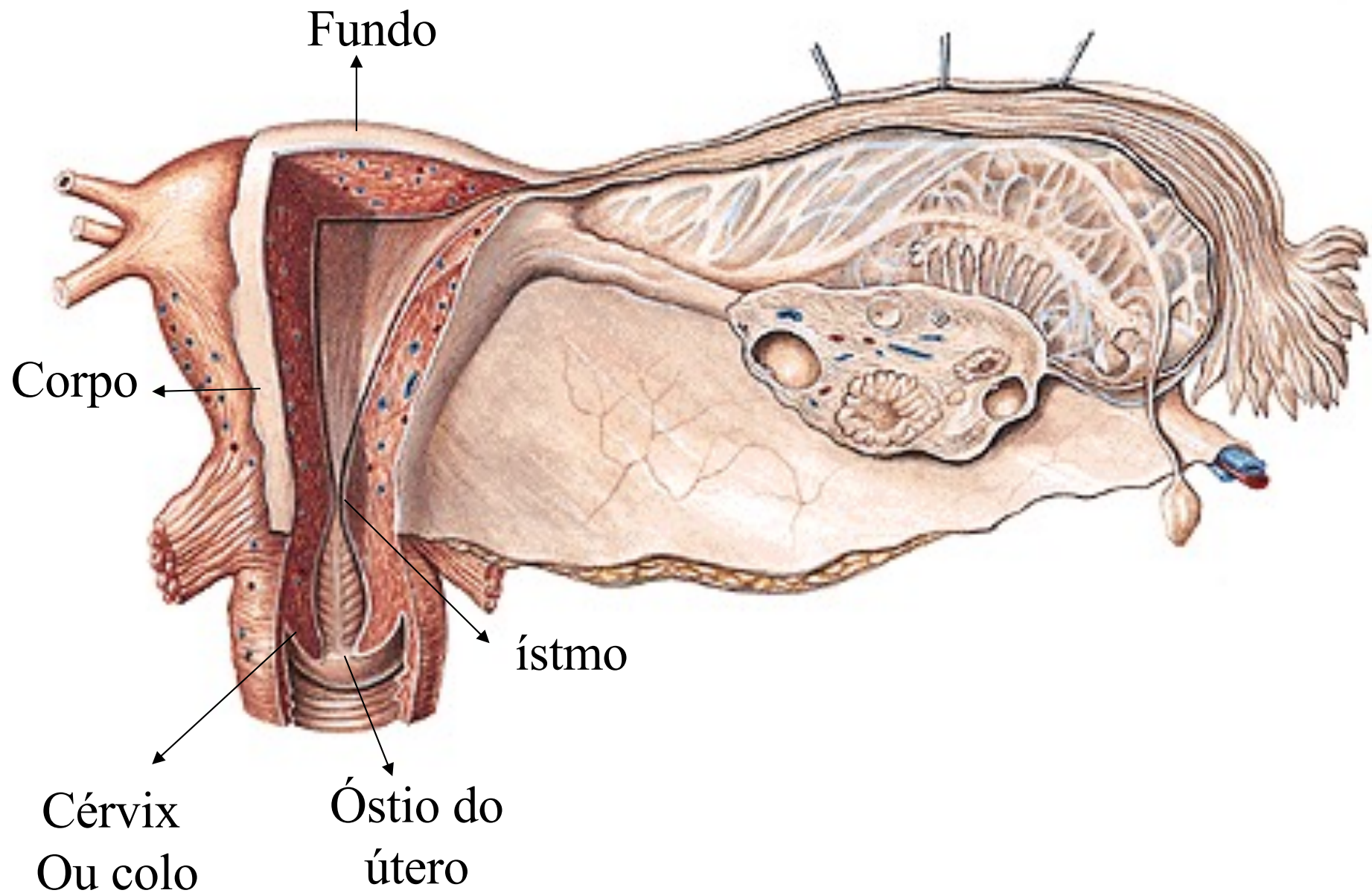


Óstio uterino da tuba e óstio abdominal da tuba

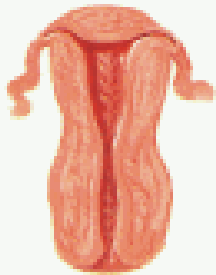




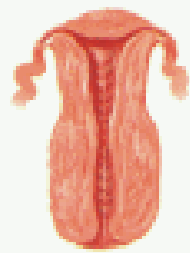
# Útero



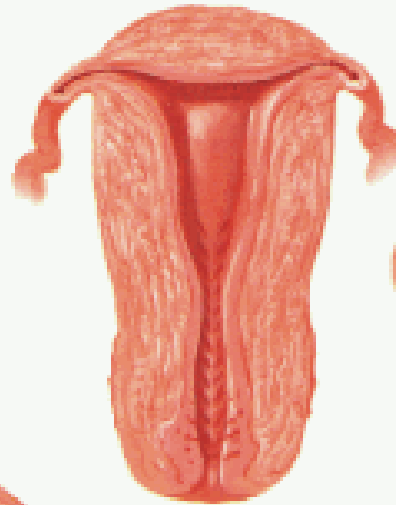




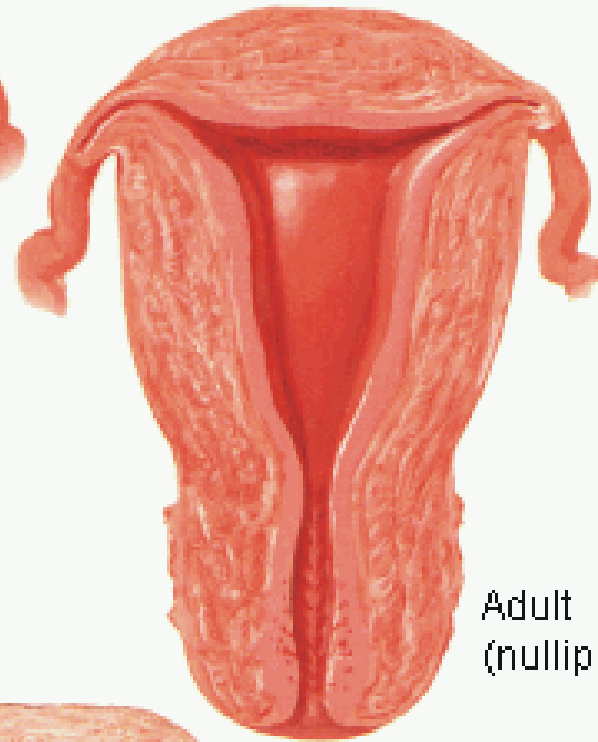
Newborn



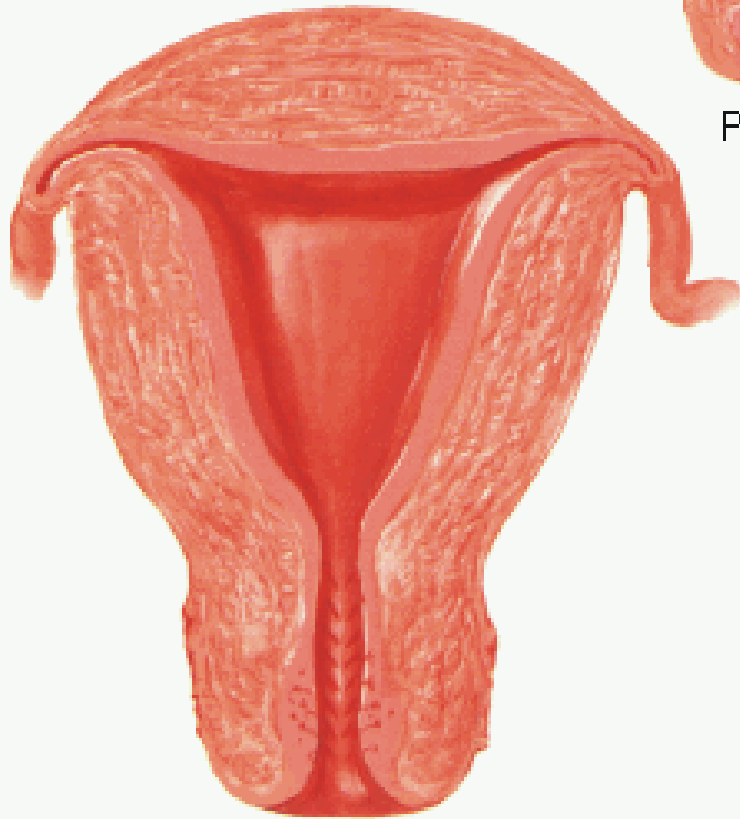
4 years



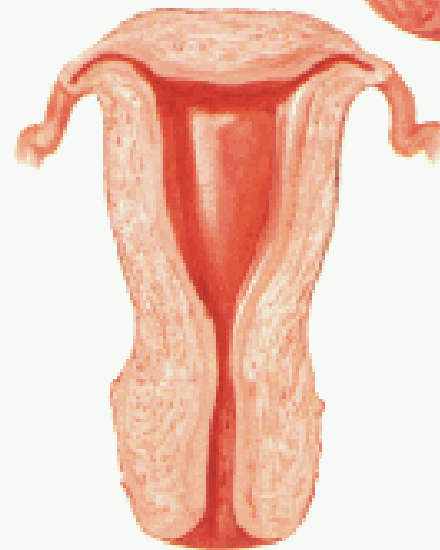
Puberty



Adult  
(nulliparous)



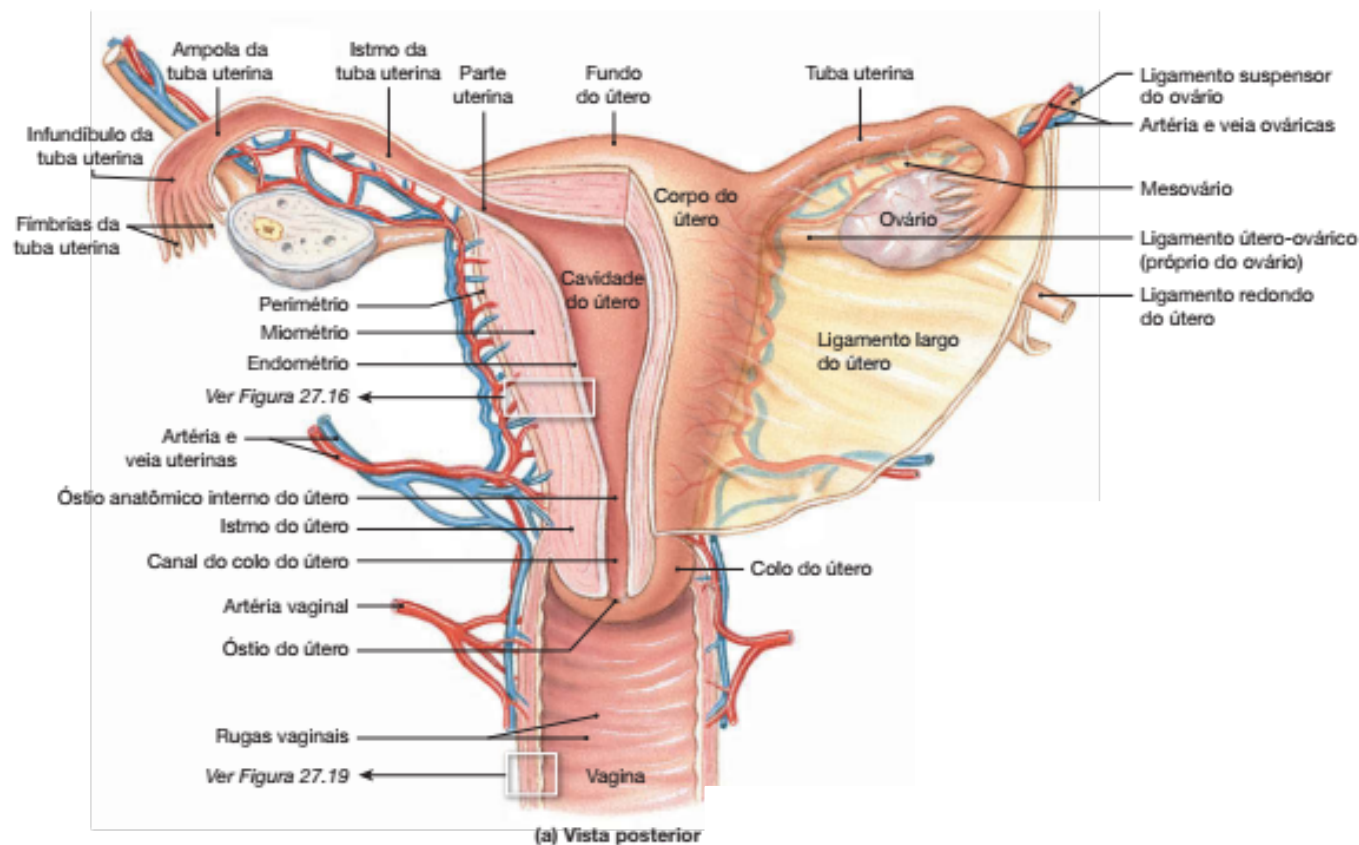
Adult (parous)



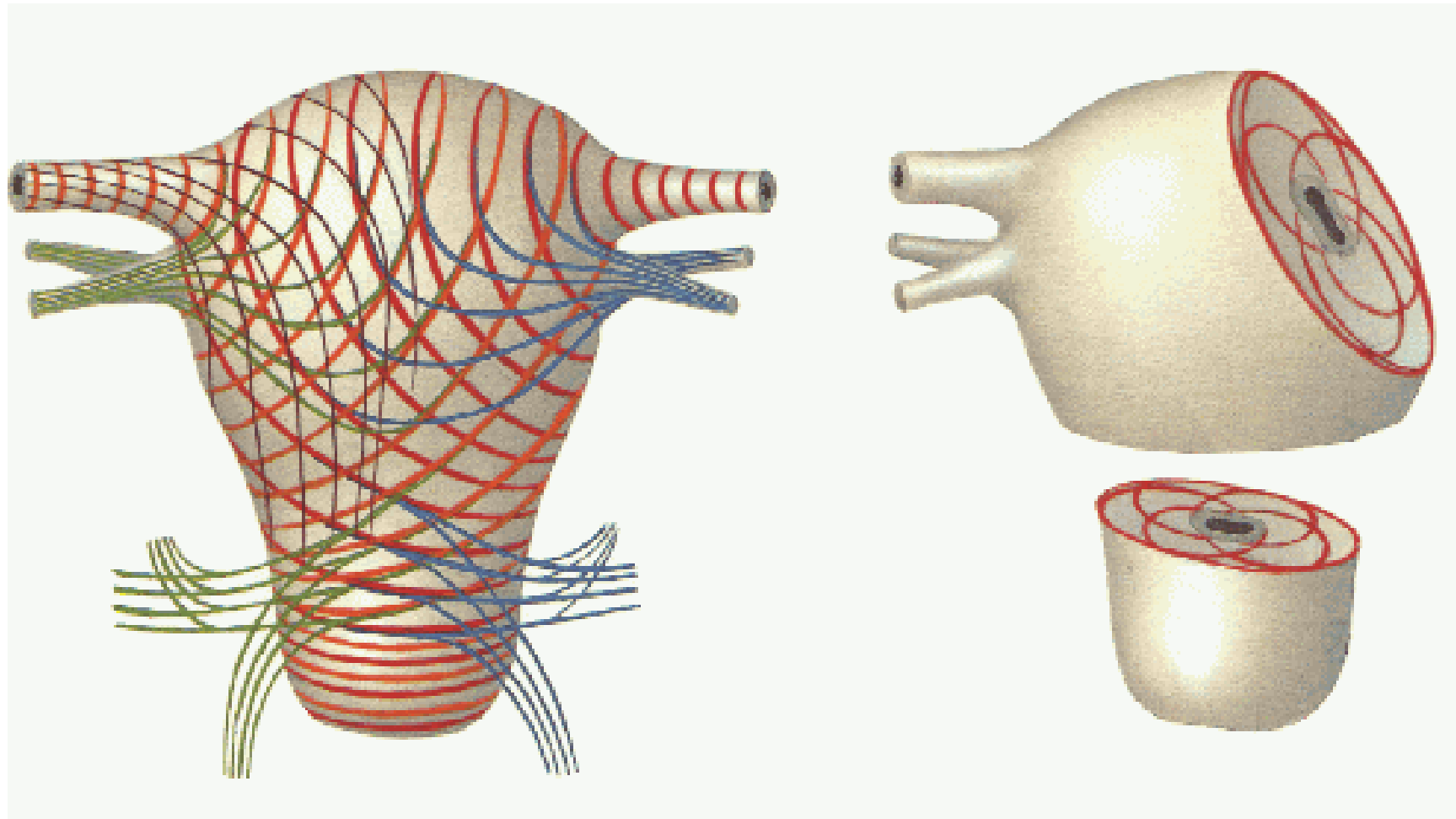
Adult (postmenopausal)

# Camadas do útero

- Perimétrio: revestimento seroso externo (peritônio e lâmina de tecido conjuntivo).
- Miométrio: camada média de músculo liso.
- Endométrio: camada mucosa interna.

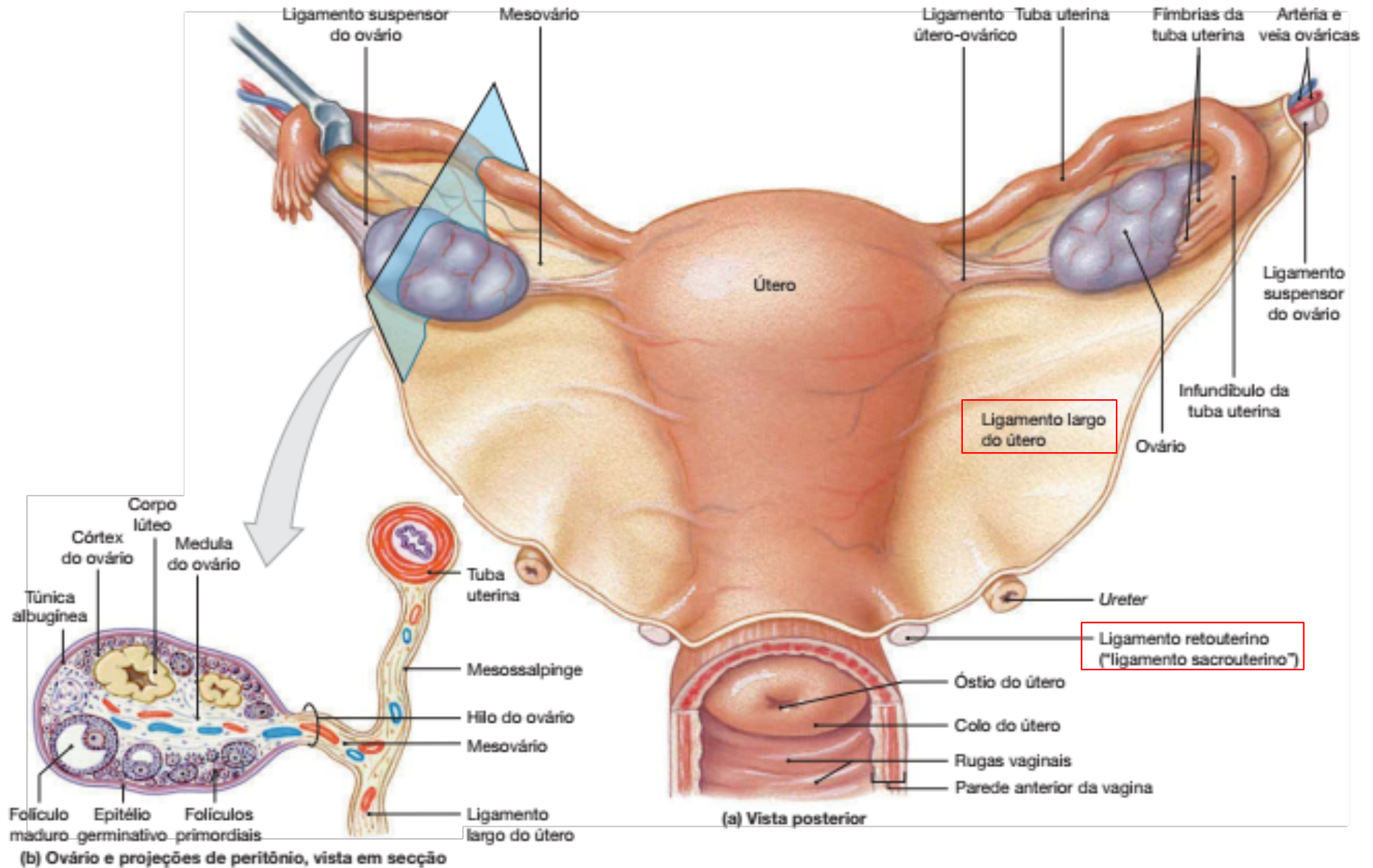


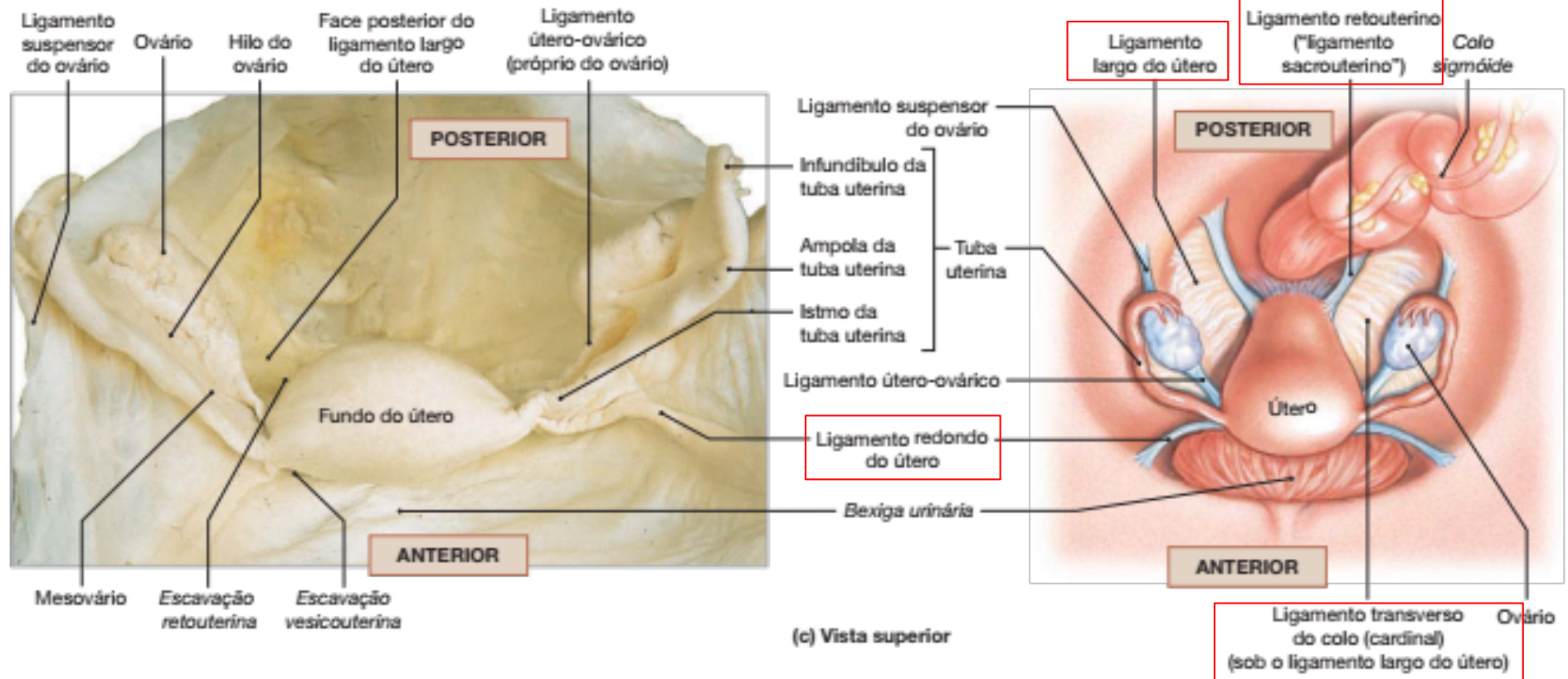
# Disposição das fibras musculares do útero





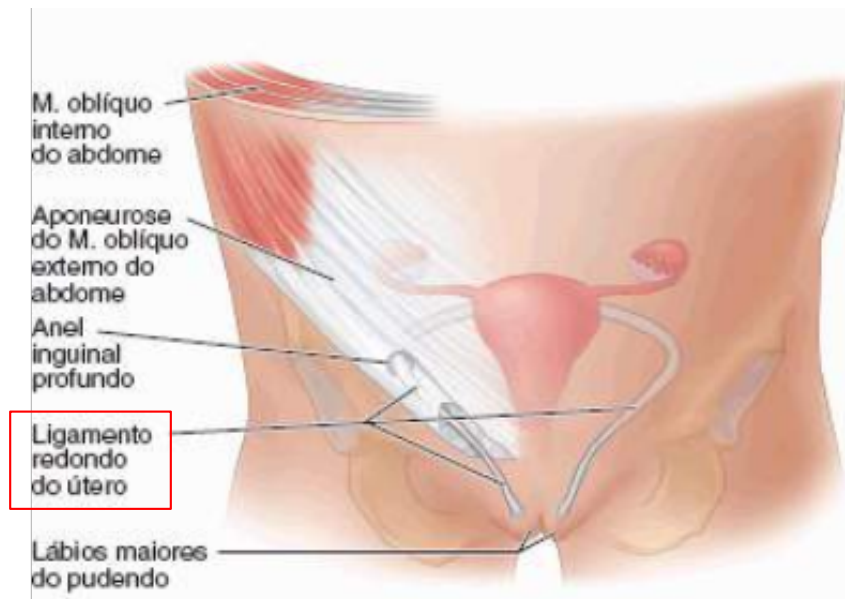
# Ligamentos uterinos



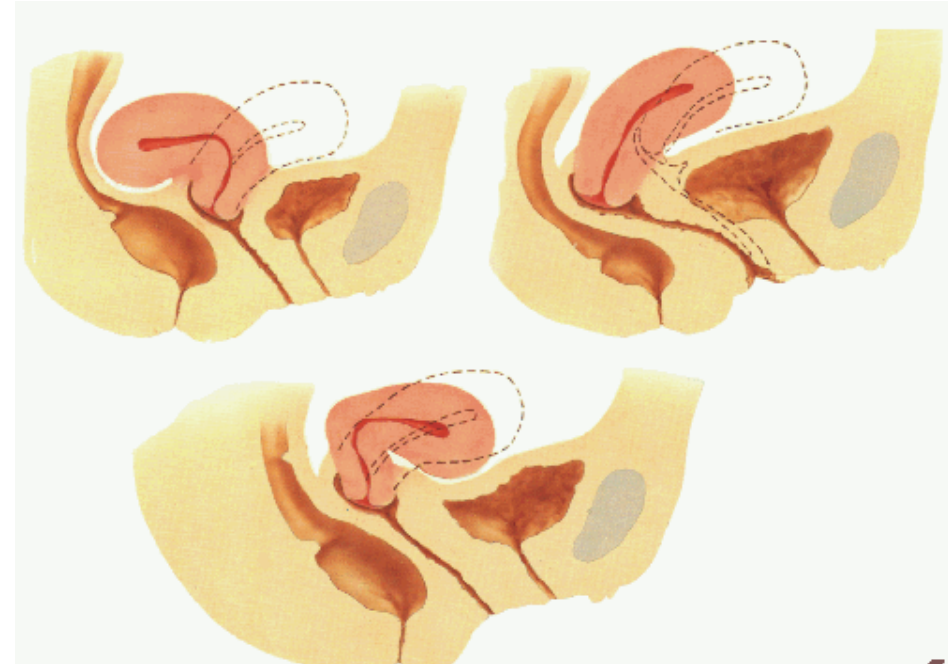
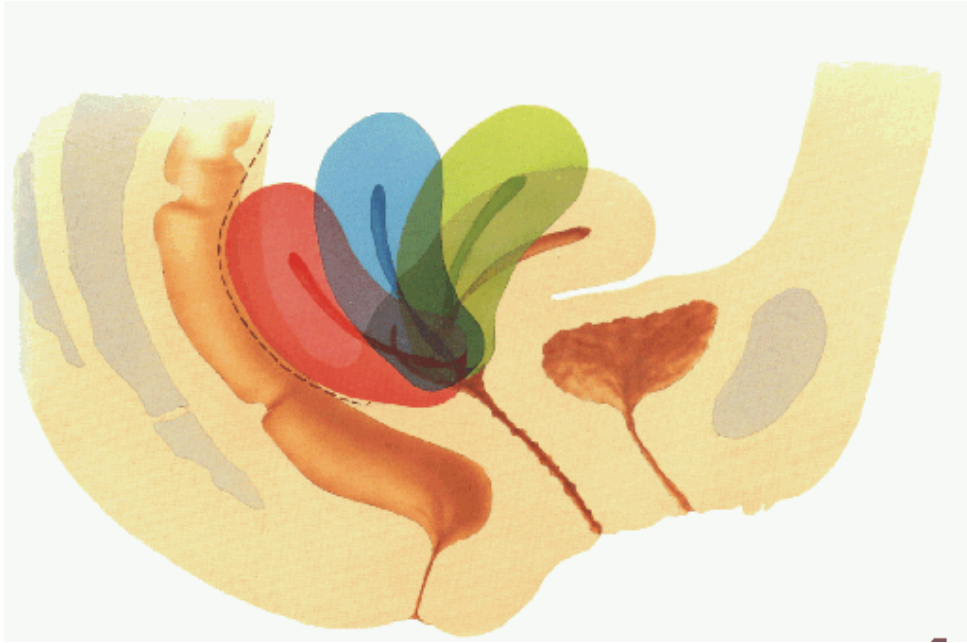


(c) Vista superior

Martini, Timmons e Tallitsh (2009)



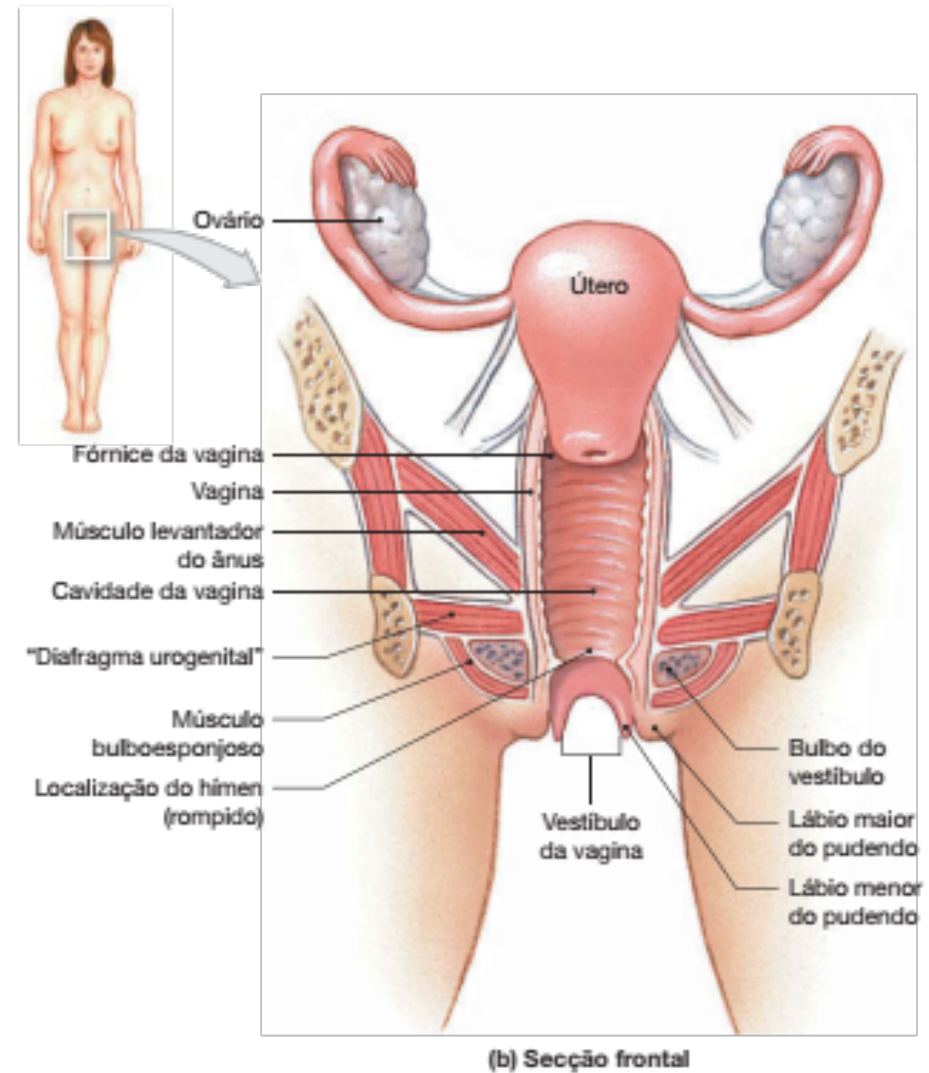
# Posição uterina

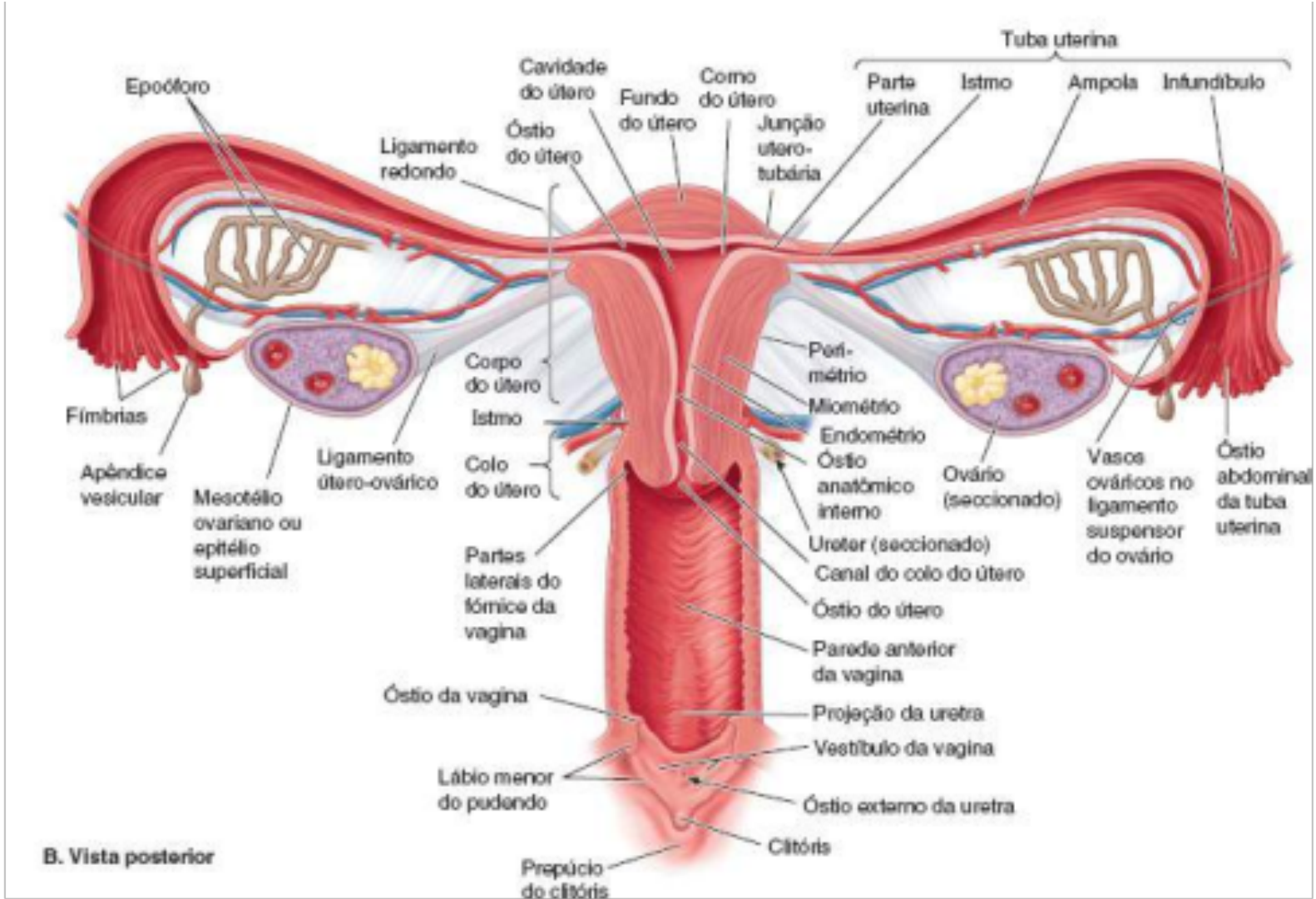




# Vagina

- Vagina = Bainha
- Órgão de cópula feminino.
- Paredes normalmente colabadas
- Abre-se no vestíbulo da vagina (óstio da vagina)





Moore, Anatomia Orientada para a Clínica, 7ª ed.

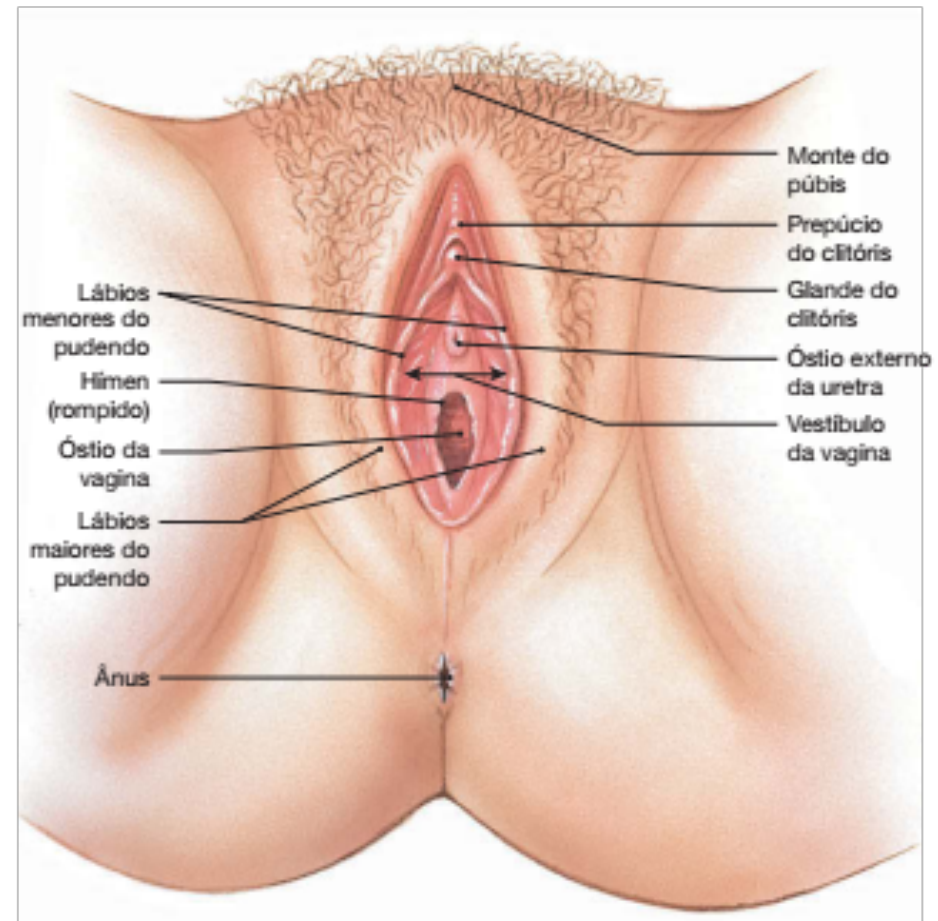


Canal do parto



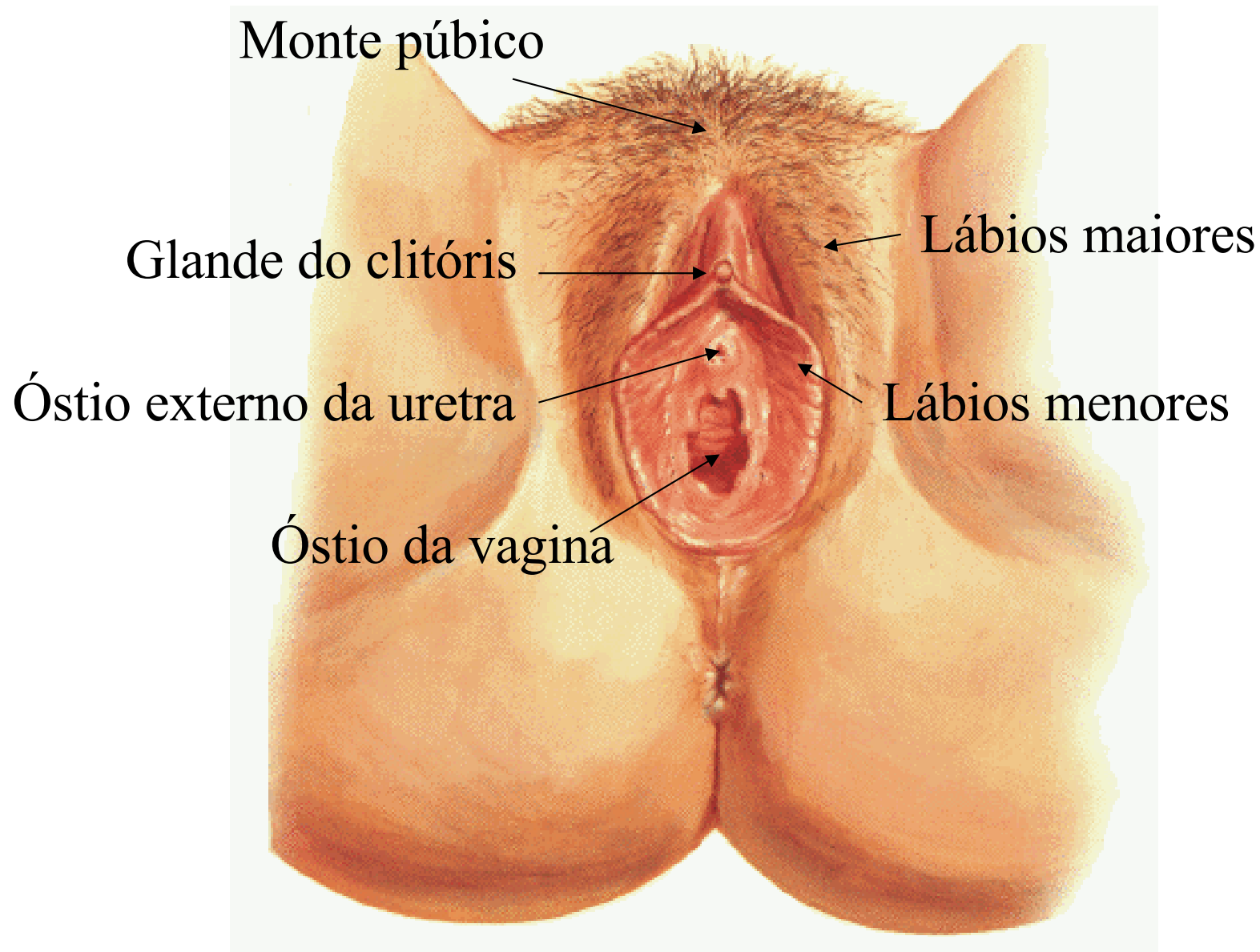
# Órgãos genitais femininos externos (pudendo feminino ou vulva)

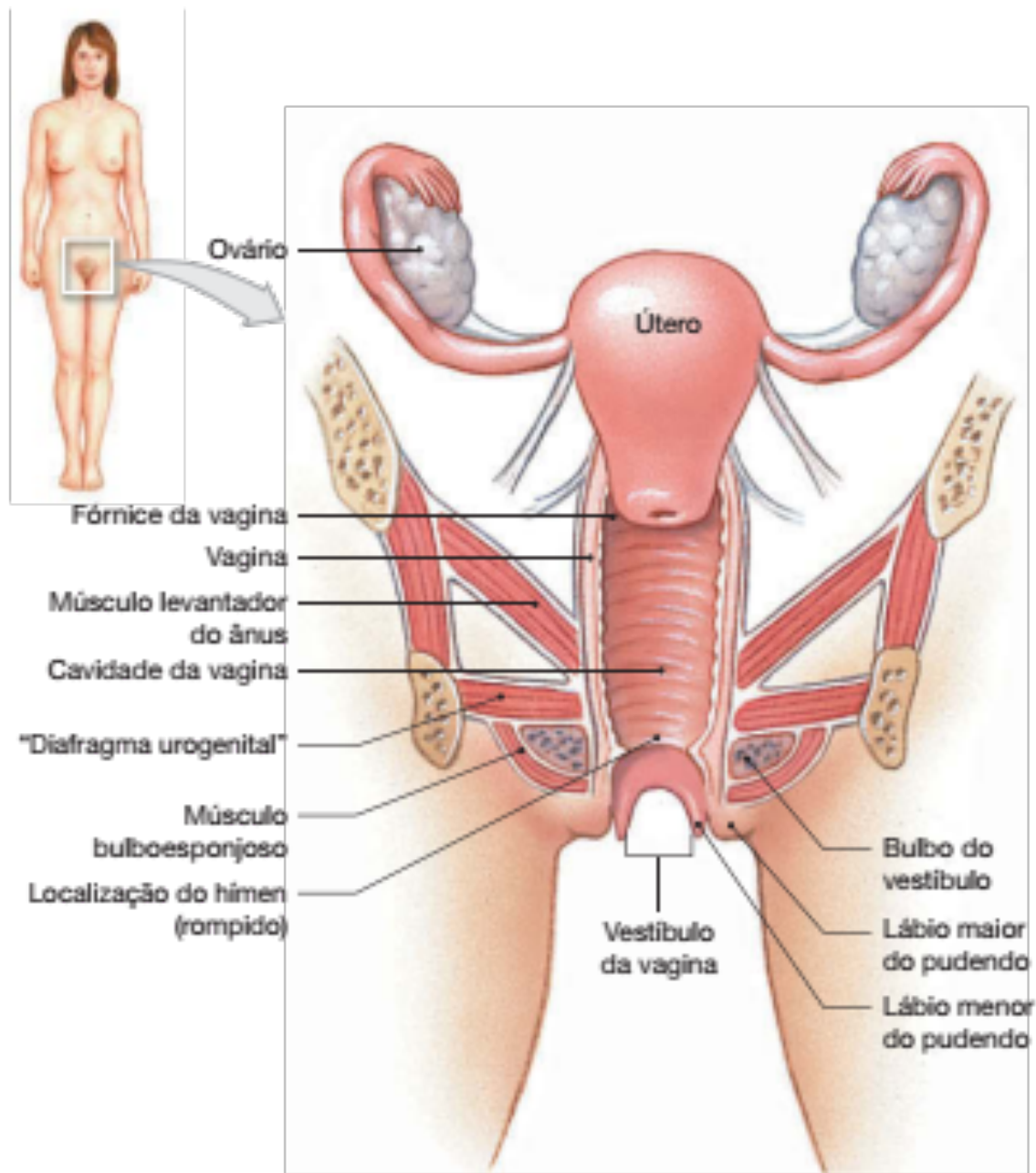
- Monte púbico,
- Lábios maiores e menores,
- Estruturas eréteis: clitóris e bulbo do vestíbulo,
- Glândulas anexas: vestibulares maiores e menores.



(a) Vista inferior

# Órgãos genitais femininos externos





Ovário

Fórnice da vagina

Vagina

Músculo levantador do ânus

Cavidade da vagina

"Diafragma urogenital"

Músculo bulboesponjoso

Localização do hímen (rompido)

Útero

Bulbo do vestibulo

Lábio maior do pudendo

Lábio menor do pudendo

Vestibulo da vagina

(b) Secção frontal



# Estruturas eréteis

- Clitóris: ramos, corpo e glande.
- Bulbo do vestíbulo: 2 massas de tecido erétil

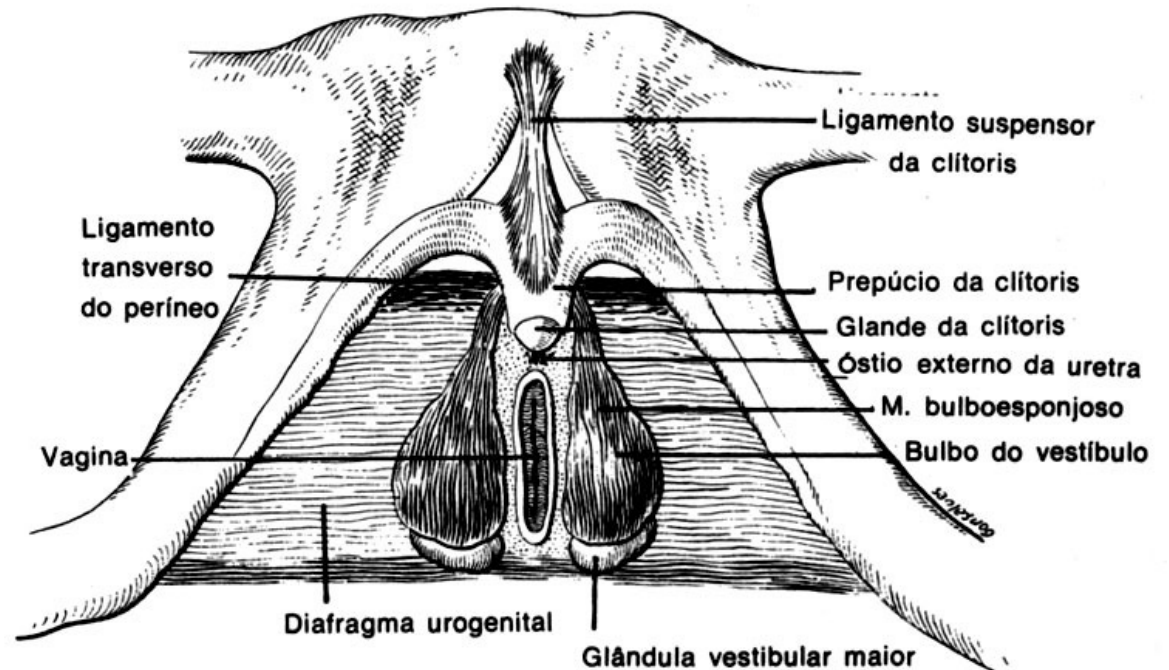
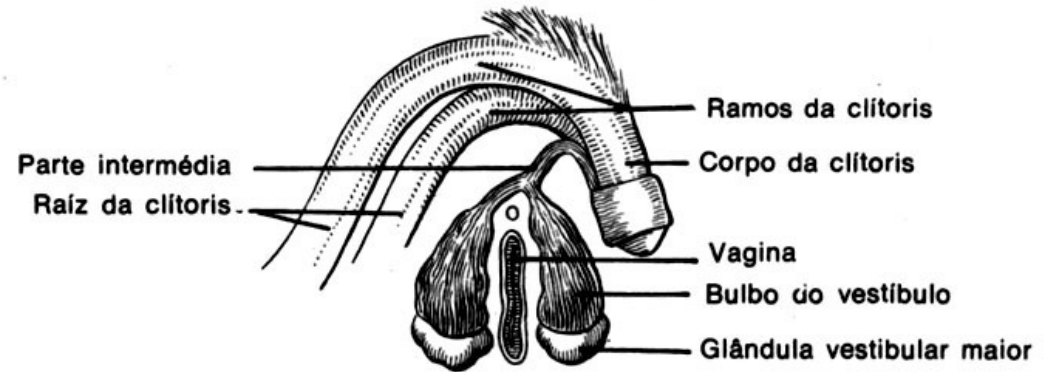
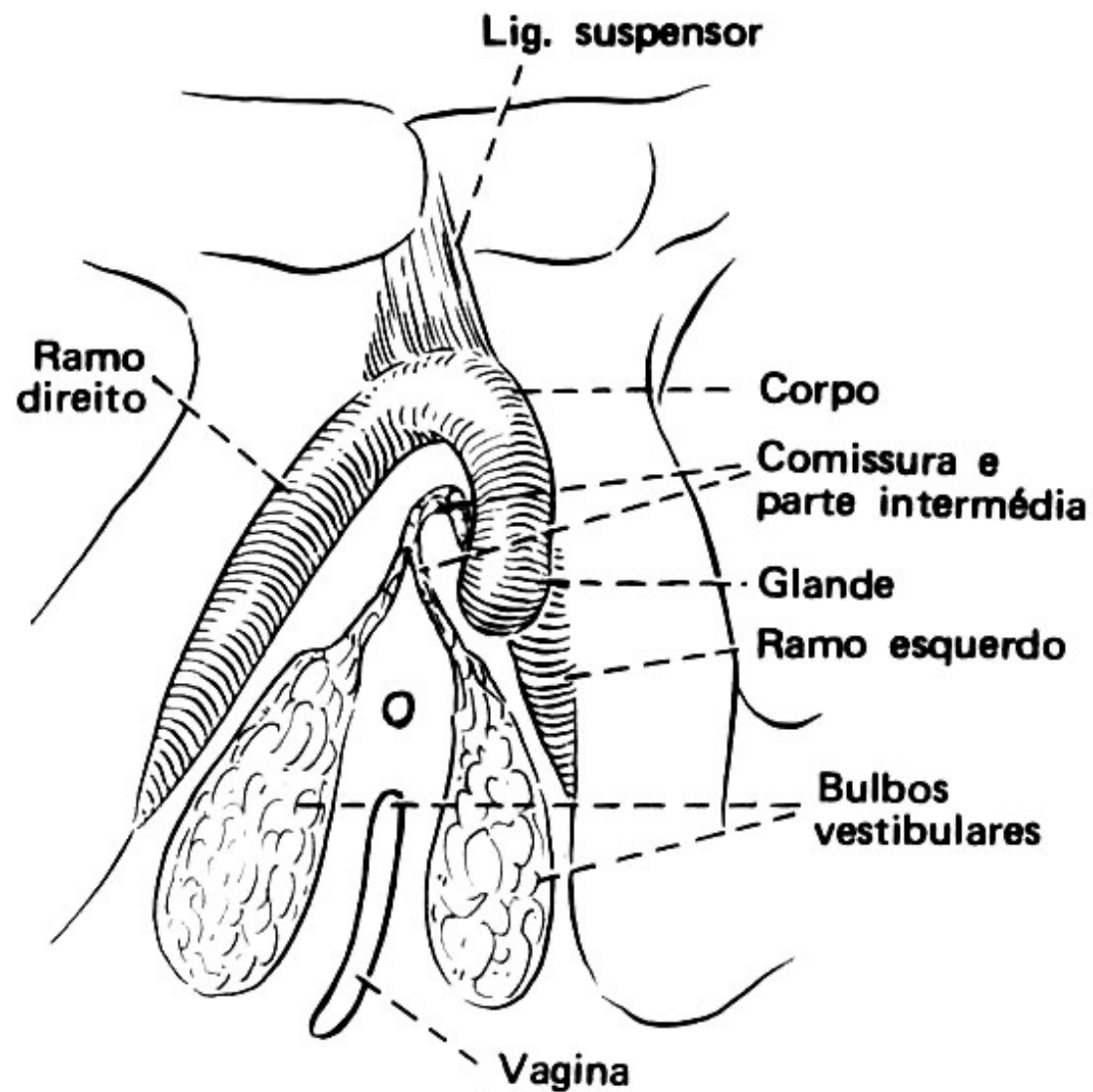
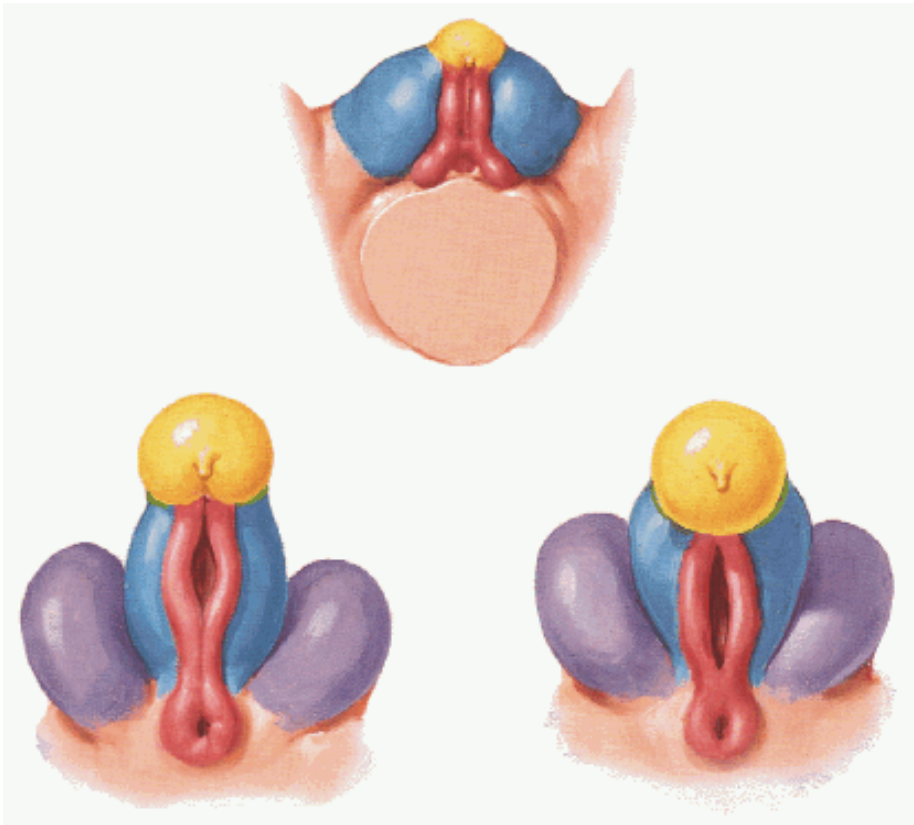


Diagrama dos órgãos eréteis femininos.

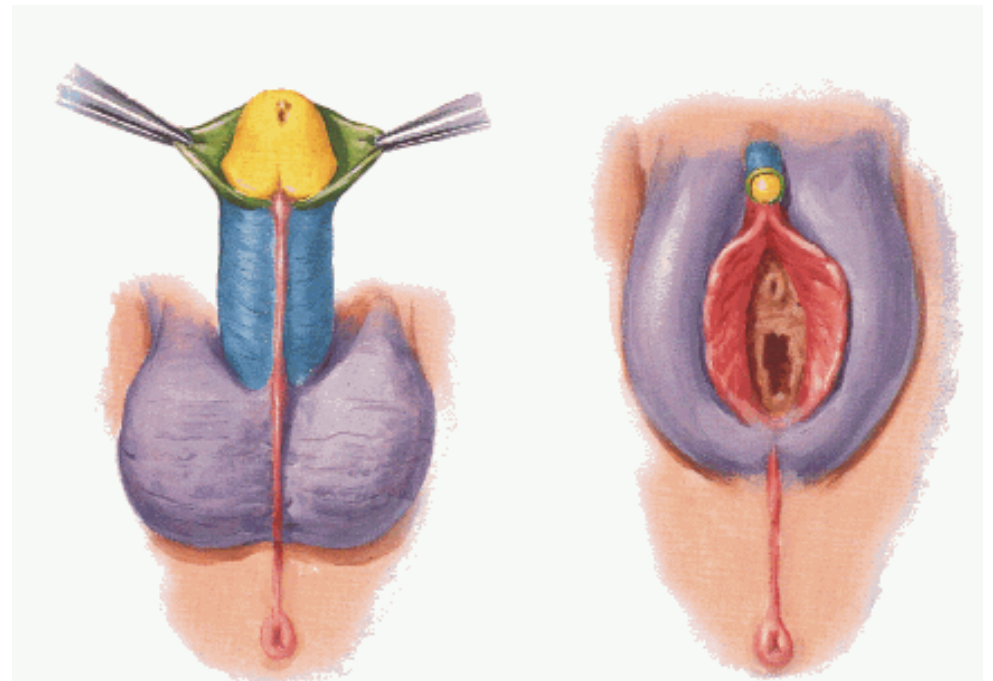


O clitóris. Aqui aparecem as conexões dos bulbos vestibulares com a glande do clitóris.

## Desenvolvimento dos órgãos externos

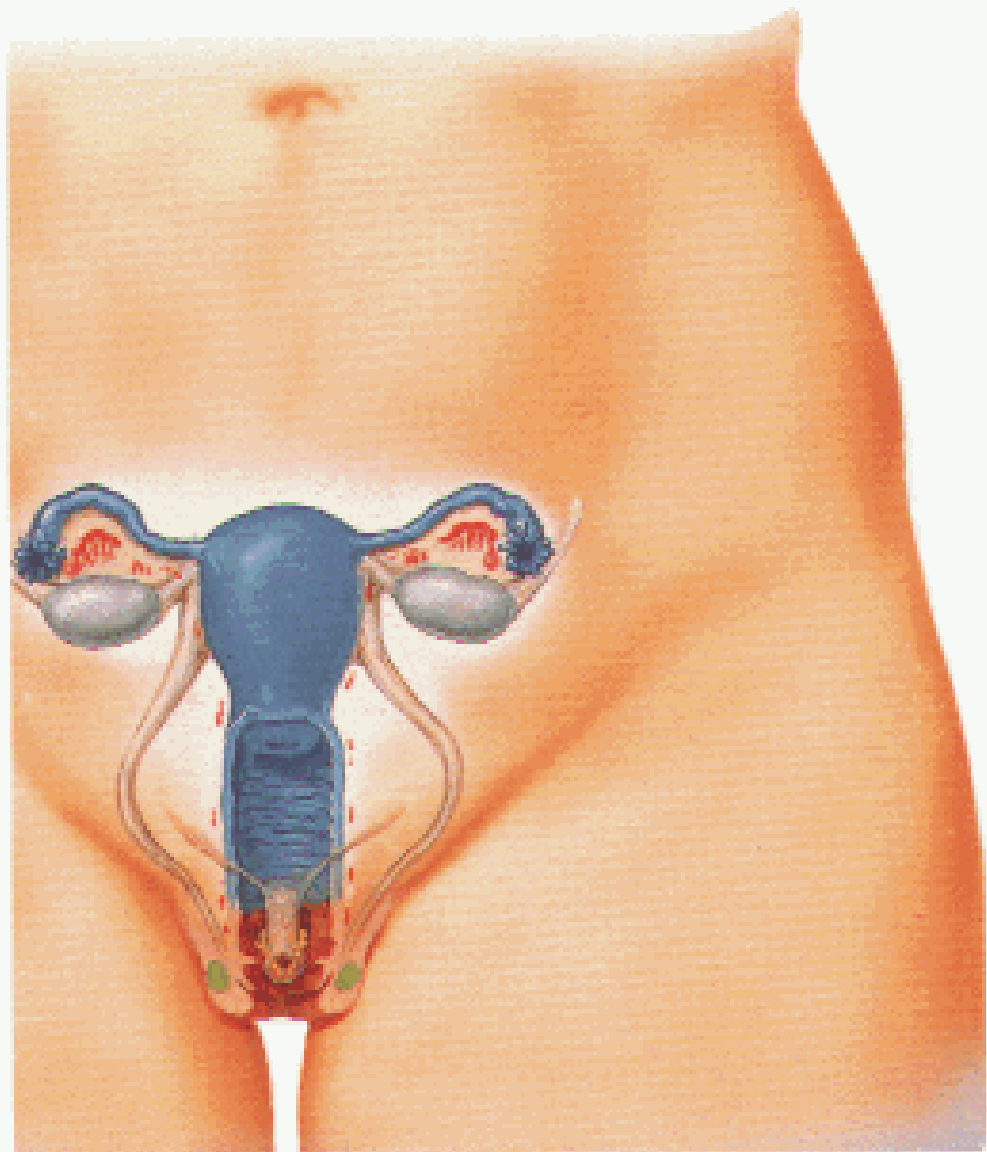
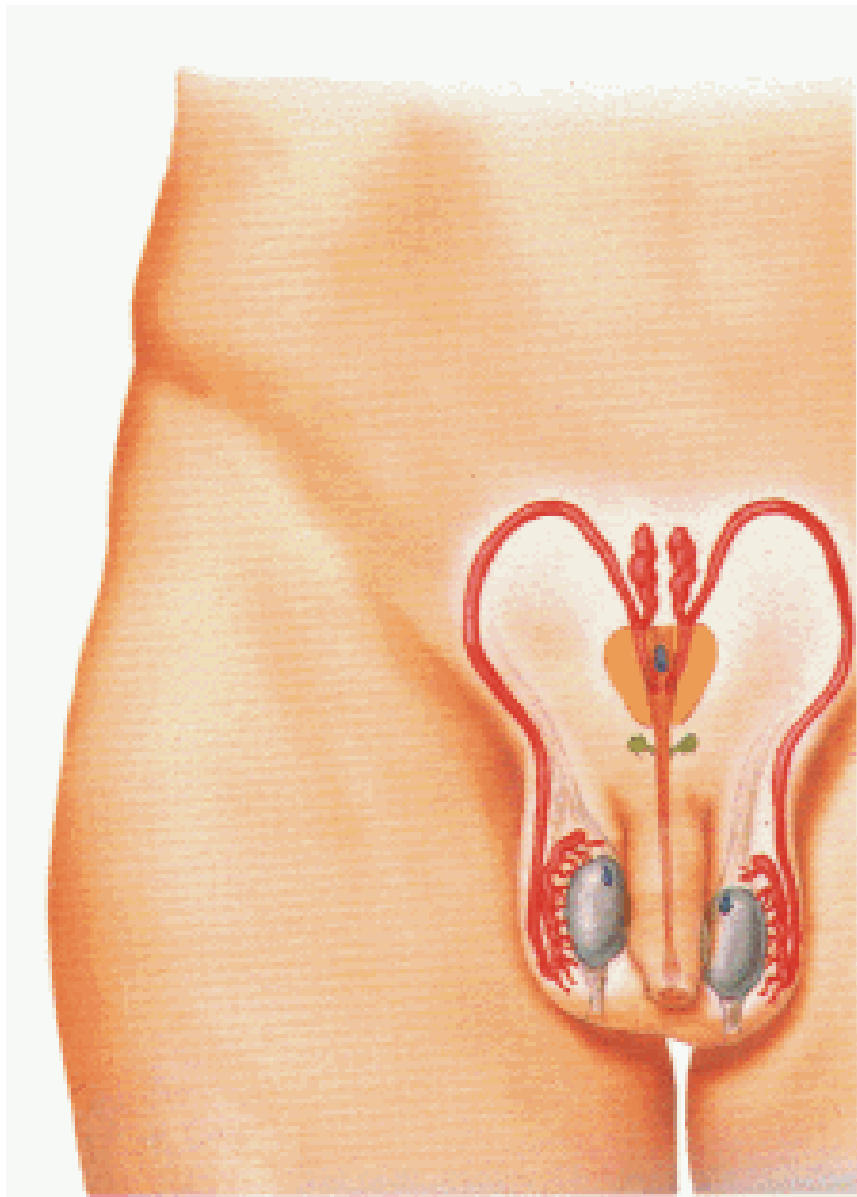


Estágio indeferenciado



Diferenciado

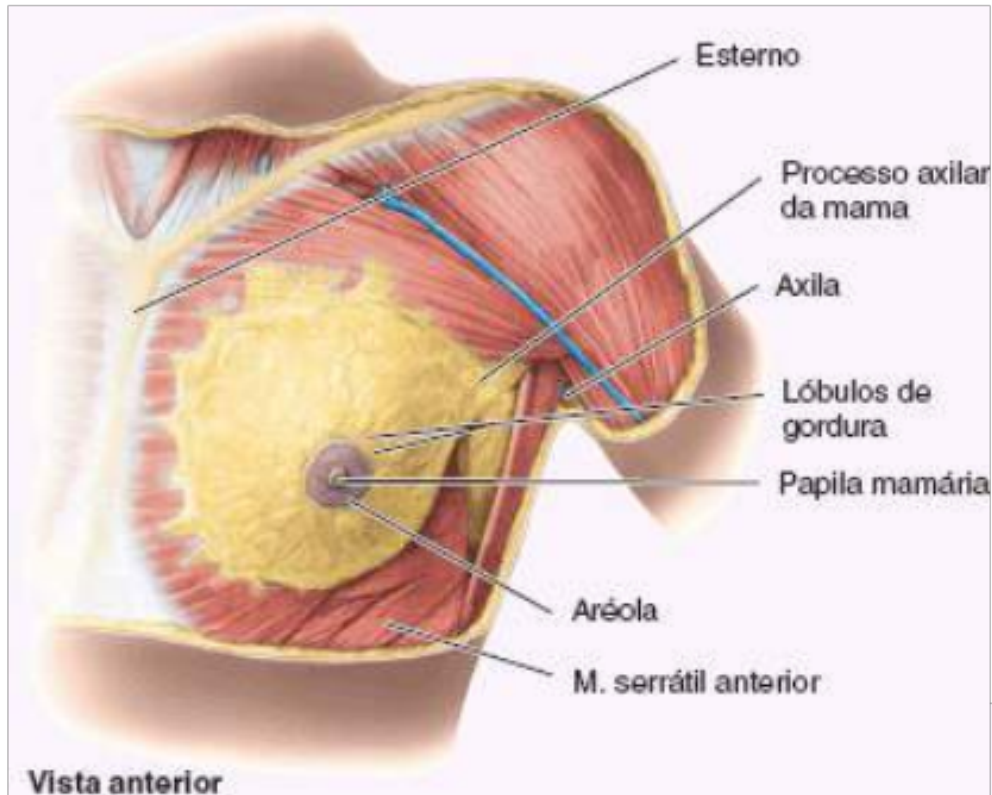




# Mamas

Localização:

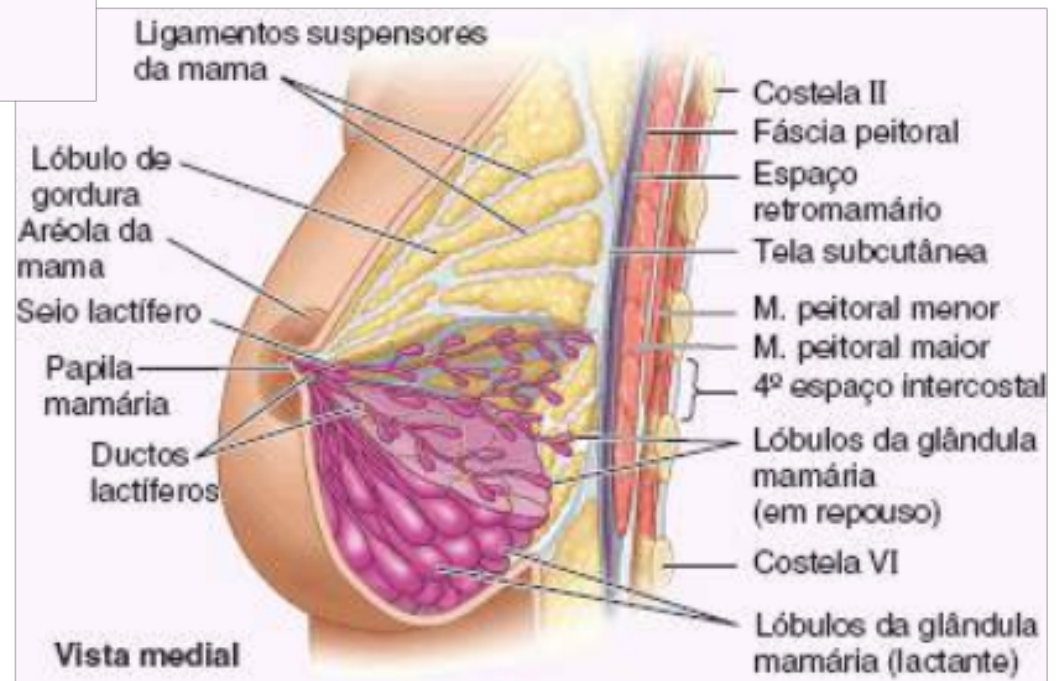
- Superfície anterior do tórax.
- Estende-se verticalmente da segunda até a sexta ou sétima costela.
- Estende-se lateralmente da borda do esterno até a linha axilar media.



Vista anterior

## Tecidos:

- Glandular
- Adiposo
- Conjuntivo fibroso



Vista medial

Moore, Anatomia Orientada para a Clínica, 7ª ed.



Lóbulo  
Ducto lactífero  
Papila mamária  
Aréola

