



Instituto de Ciências Biomédicas
Universidade de São Paulo



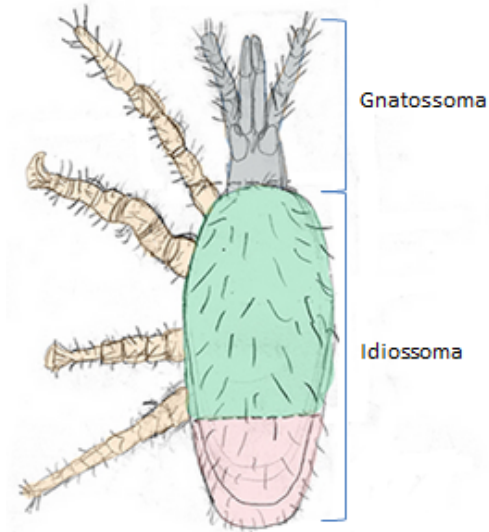
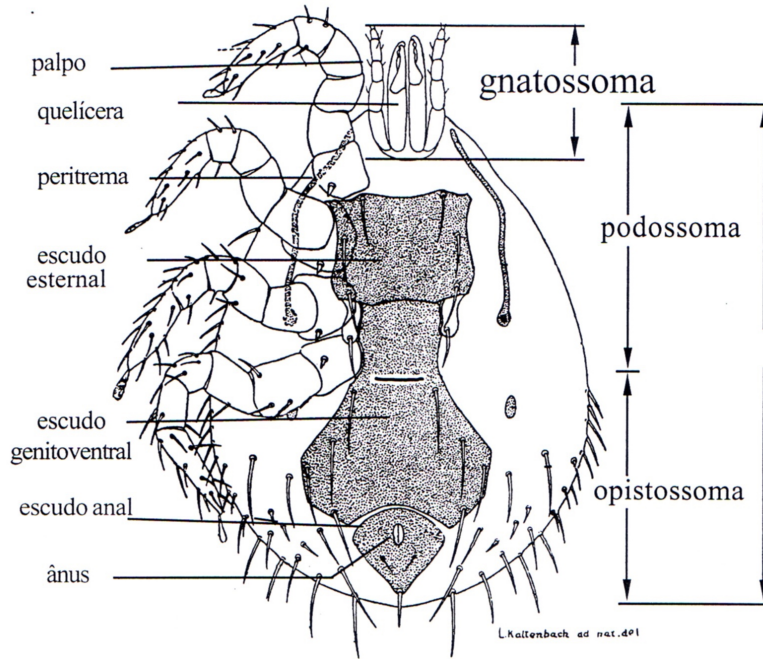
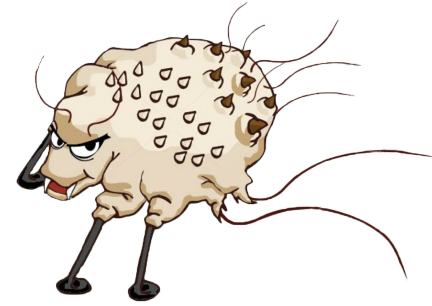
Aula prática

Ácaros

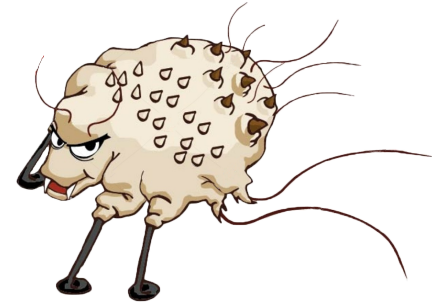


Arthur Gruber

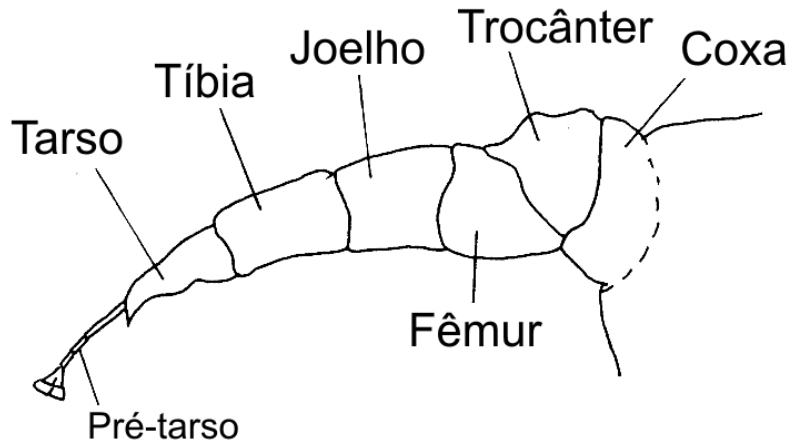
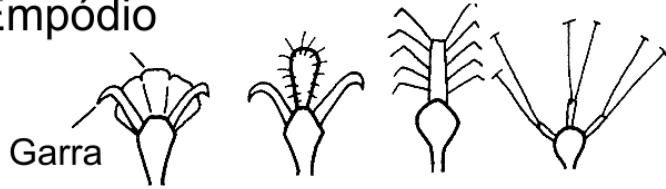
Ácaros – estrutura do corpo



Ácaros – estrutura dos membros

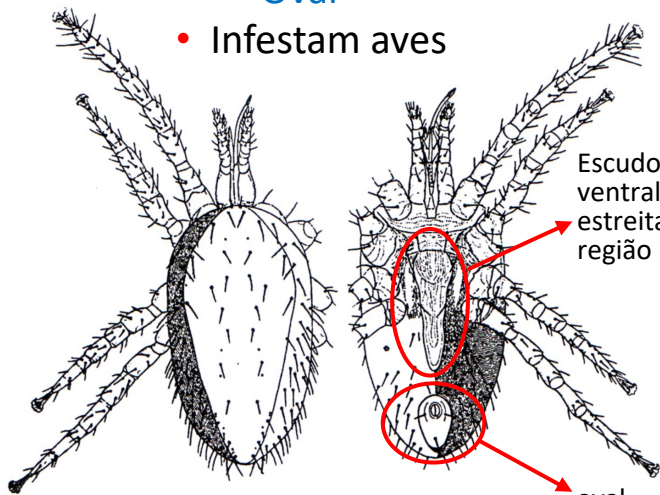
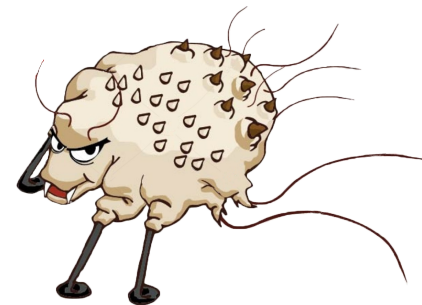


Empódio



Ácaros hematófagos de aves

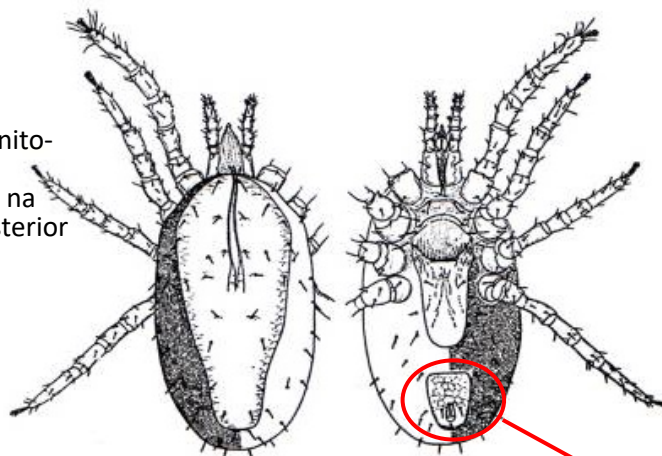
- Patas longas
- Quelíceras longas em forma de estilete
- Formato do escudo anal
 - Quadrangular
 - Oval
- Infestam aves



Ornithonyssus bursa

Escudo gênito-ventral estreitado na região posterior

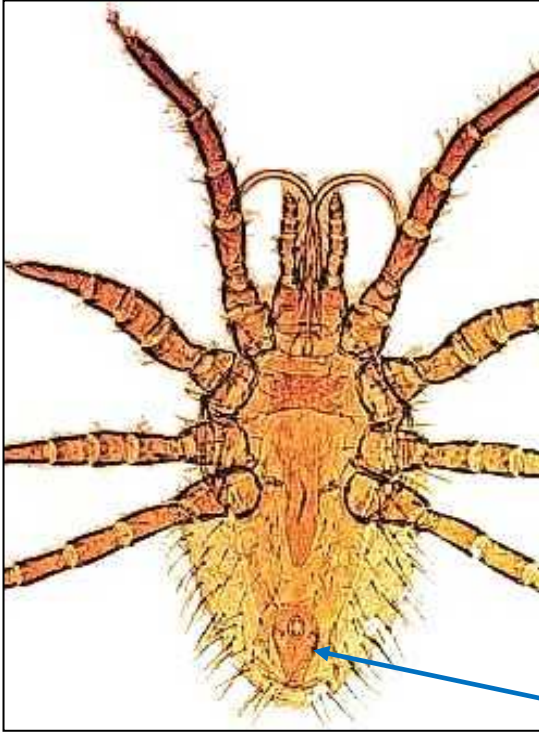
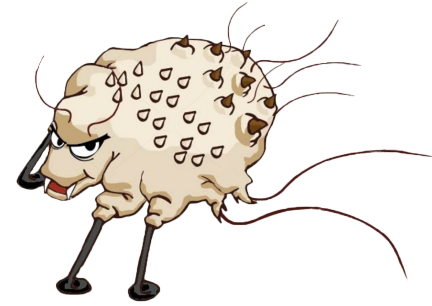
oval



Dermanyssus gallinae

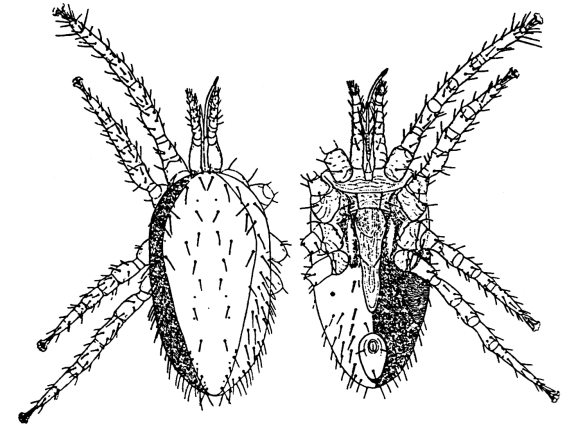
quadrangular

Ornithonyssus bursa



- Escudo dorsal amplo mas sem cobrir todo o corpo
- Três pares de cerdas sobre a placa esternal
- Escudo gênito-ventral estreitado na região posterior
- Escudo anal em formato oval
- Hospedeiros - aves

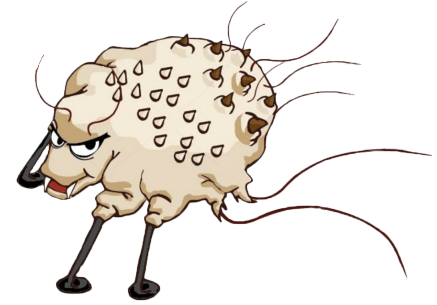
Escudo anal em formato oval



Face dorsal Face ventral

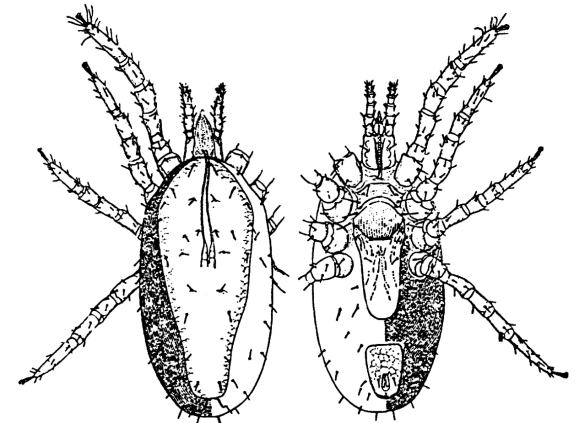
fêmea

Dermanyssus spp.



- Quelíceras longas
- Superfície dorsal com um escudo
- Escudo anal em formato não oval
- Abertura anal na extremidade posterior
- Hospedeiros - aves

Escudo anal em formato não oval

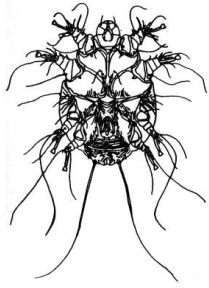
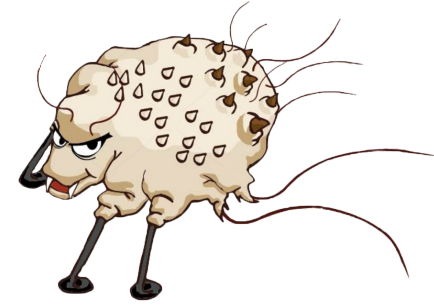


Face dorsal

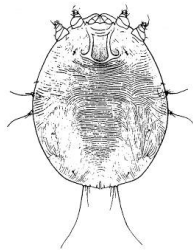
Face ventral

fêmea

Ácaros escavadores - família *Sarcoptidae*

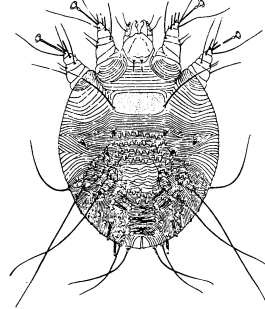


Face ventral
macho

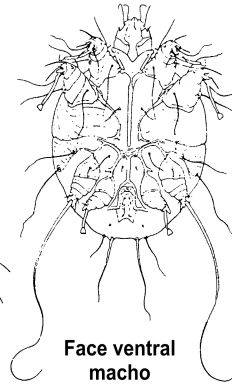


Face dorsal
fêmea

Knemidocoptes spp.

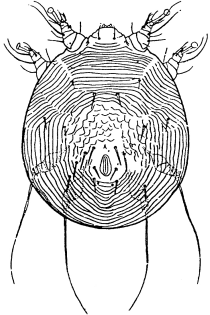


Face dorsal
fêmea

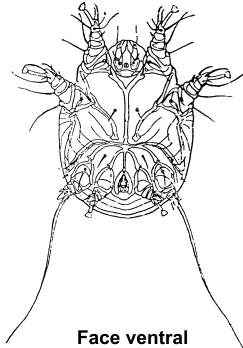


Face ventral
macho

Sarcoptes scabiei



Face dorsal
fêmea



Face ventral
macho

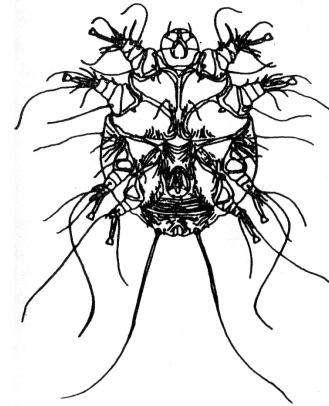
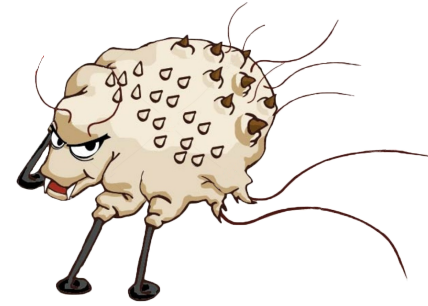
Notoedres spp.

- Corpo globoso
- Pernas curtas e grossas
- Par de membros III e IV muito curtos, não se estendem além da margem do corpo

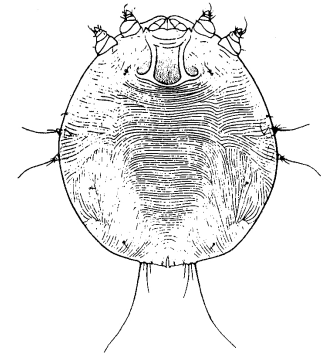
Knemidocoptes spp.



- Corpo globoso (0,4-0,5 mm)
- Pernas curtas e grossas
- Ânus terminal
- Estriações dorsais simples não quebradas
- Hospedeiros - aves

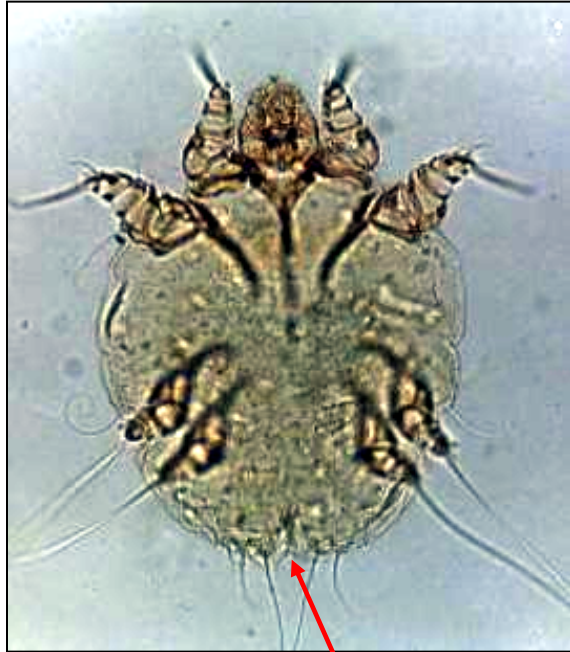


Face ventral
macho



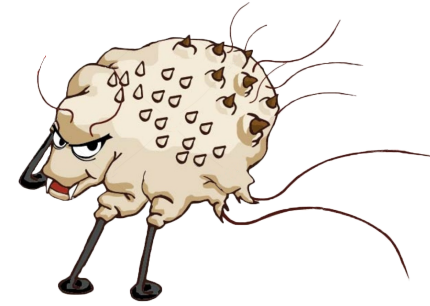
Face dorsal
fêmea

Sarcoptes scabiei

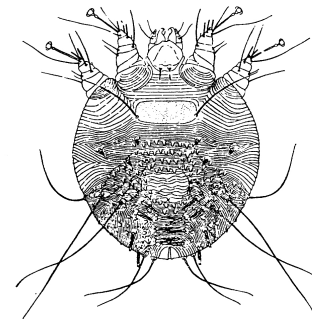


Ânus terminal

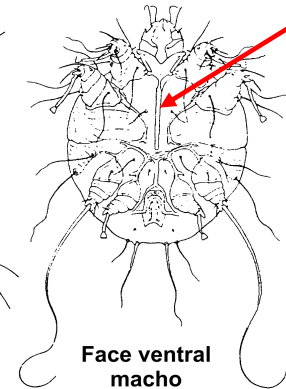
- Corpo globoso (0,3-0,5 mm)
- Pernas curtas e grossas
- Abertura genital forma uma fenda estreita e comprida, transversa às estriações do corpo
- Estriações dorsais quebradas por grandes escamas pontiagudas
- Cerdas dorsais fortes parecendo espinhos
- Ânus terminal
- Hospedeiros - **mamíferos**



Abertura genital forma uma fenda estreita e comprida transversa às estriações do corpo

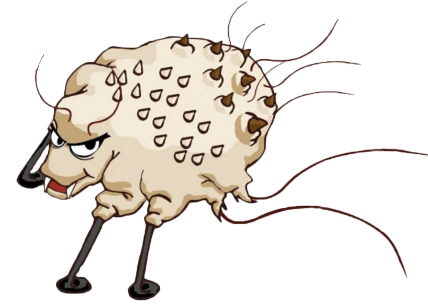


Face dorsal
fêmea

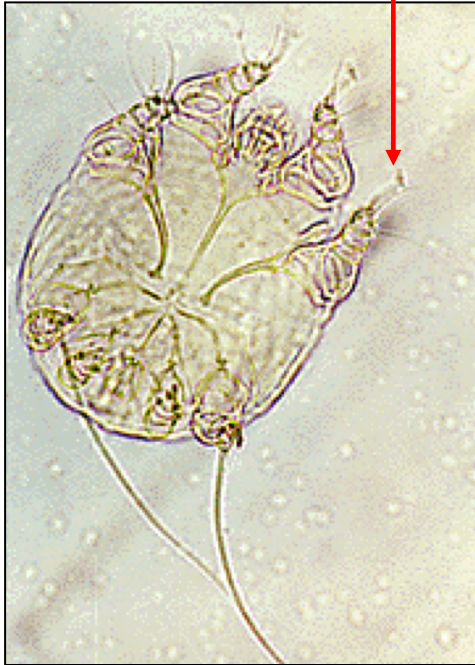


Face ventral
macho

Notoedres spp.

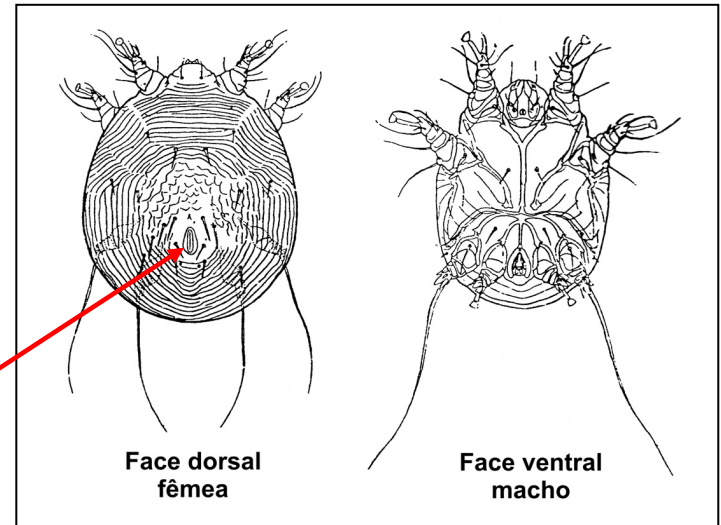


Pré-tarsos com
hastes longas



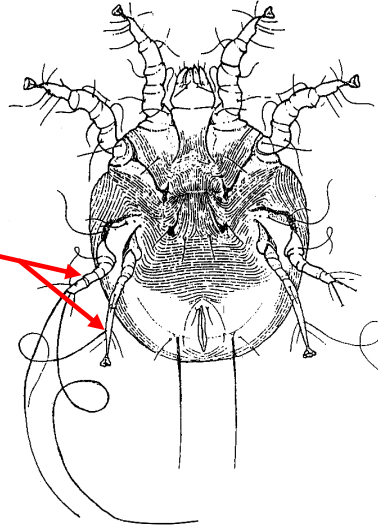
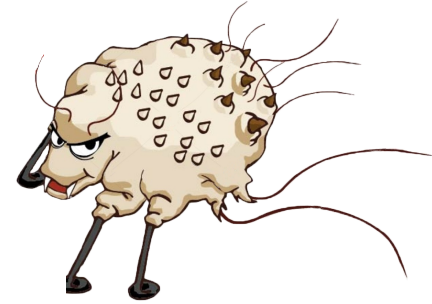
- Corpo globoso
- Ânus dorsal
- Pernas curtas e grossas
- Estriações dorsais concêntricas não quebradas por escamas pontiagudas
- Setas dorsais simples sem aspecto de espinhas
- Tarsos com pré-tarsos longos nas pernas I e II
- Hospedeiros - **gatos**

Ânus dorsal

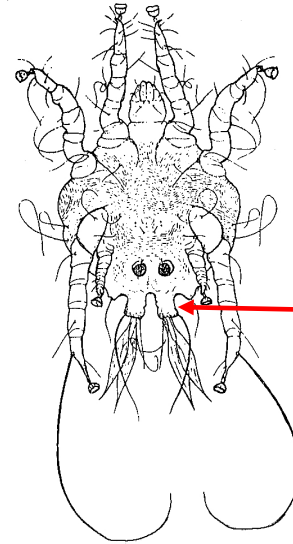


Ácaros não escavadores - família *Psoroptidae*

- Corpo oval
- Se alimentam de descamações da pele e líquido tissular
- Vivem na superfície da pele, não são cavadores
- Par de membros III e IV mais longos que em *Sarcoptidae*
- Os machos apresentam ventosas copulatórias



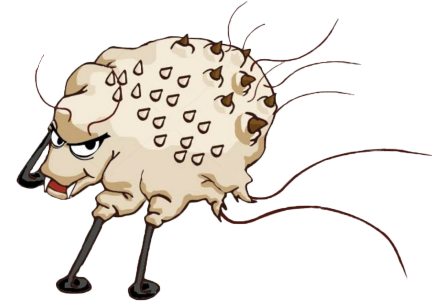
Face ventral
fêmea



Face dorsal
macho

Ventosas
copulatórias

Psoroptes spp.

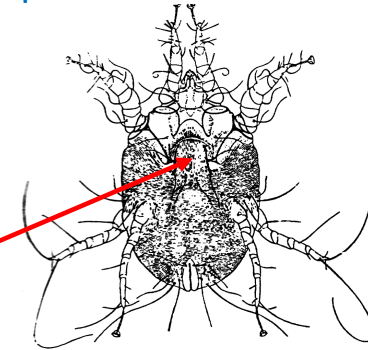


Pré-tarsos com
hastes longas

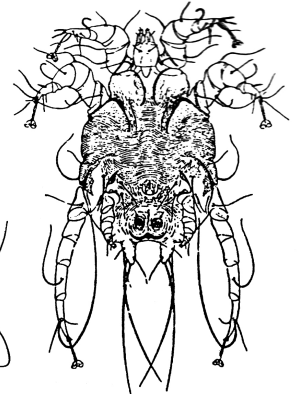


- Corpo globoso
- Pernas longas e não grossas
- Pré-tarsos com hastes longas e ventosas em forma de trompete
- Abertura genital forma um U invertido
- Macho: pernas do quarto par muito curtas
- Hospedeiros – mamíferos domésticos

Abertura genital
forma um U invertido

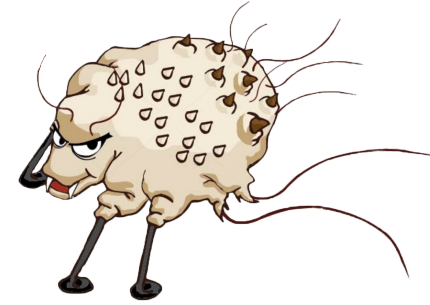


Face ventral
fêmea

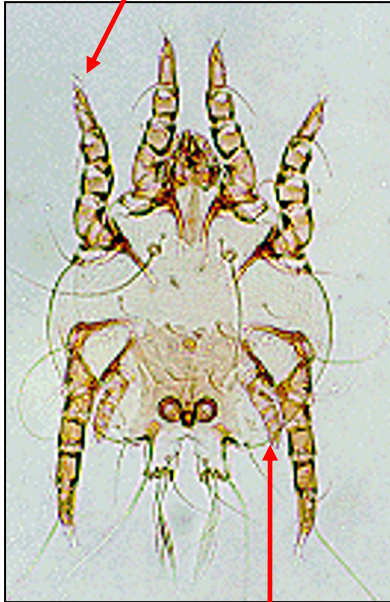


Face ventral
macho

Chorioptes spp.

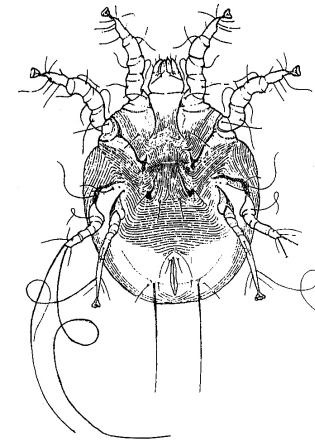


Pré-tarsos com
hastes curtas

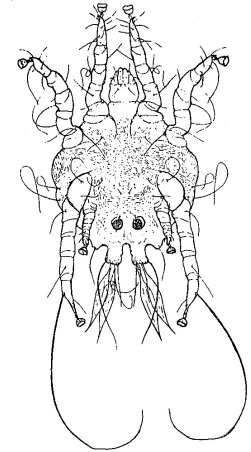


Quarto par de pernas
muito curtas

- Medem cerca de 300 μm
- Pernas longas e não grossas
- Abertura genital forma uma fenda estreita e comprida quase transversa
- Pré-tarsos apresentam hastes curtas com ventosas em forma de xícara
- Macho: quarto par de pernas é muito curto
- Membros III têm setas terminais em forma de chicote
- Hospedeiros – **animais domésticos**

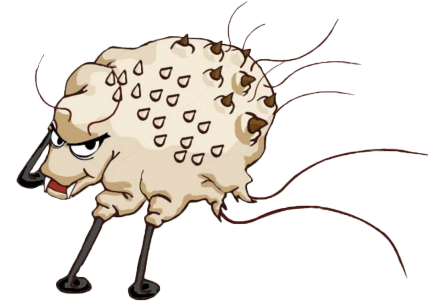


Face ventral
fêmea

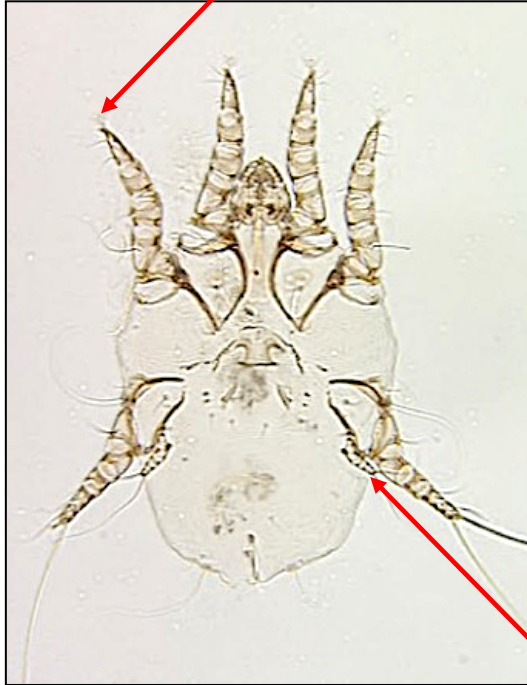


Face dorsal
macho

Otodectes spp.

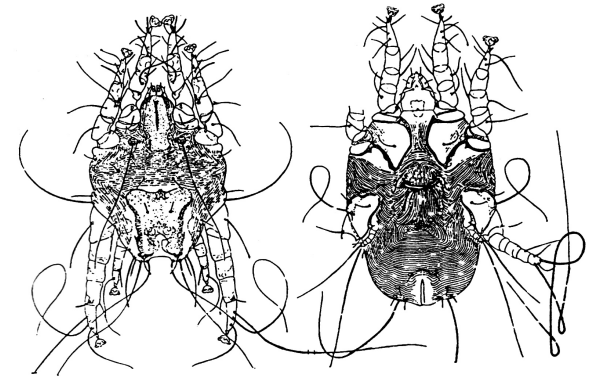


Pré-tarsos com
hastes curtas



- Pernas longas e não grossas
- Pré-tarsos com hastes curtas
- Quarto par de pernas muito curtas (macho e fêmea)
- Na fêmea o terceiro e quarto pares de pernas apresentam um par de cerdas na forma de chicote
- Hospedeiros - **Infestam as orelhas de cães e gatos**

Quarto par de pernas
muito curtas

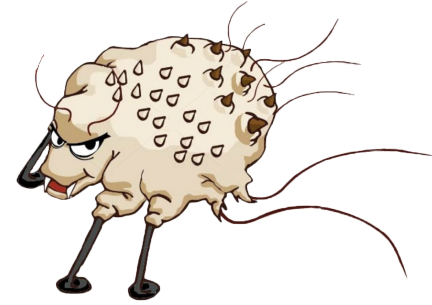


Face dorsal
macho

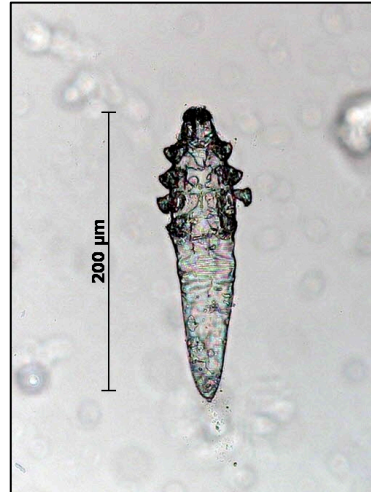
Face ventral
fêmea

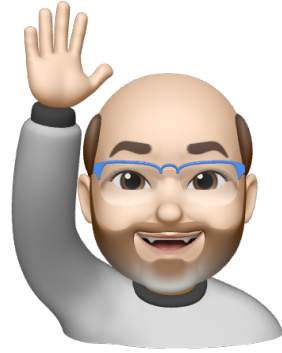
Família Demodicidae - *Demodex*

- Corpo muito alongado com aspecto de crocodilo
- Presença de anulações transversais
- Ausência de setas
- Infestam os poros da pele de mamíferos
- Medem cerca de 100-400 μm



Face ventral





Obrigado pessoal. Até a próxima aula!

