

# Anatomia clínico-cirúrgica de sistema digestório (esôfago, estômago e intestinos)

Luis Claudio Lopes Correia da Silva

VCI0209 - 2020

# Esôfago

- Extensão
- Limites
- Camadas
- Acessos
- Lesões/afecções
- Ocorrência



97-MAY-21  
22:43



LIGHT+4  
FILM 12  
AVE

LUIS CLAUDIO  
FAC. MED. VET. SJB

97-MAY-21  
22:44



LIGHT+4  
FILM 13  
AVE

LUIS CLAUDIO  
FAC. MED. VET. SJB

97-MAY-21  
22:47



LIGHT+4  
FILM 14  
AVE

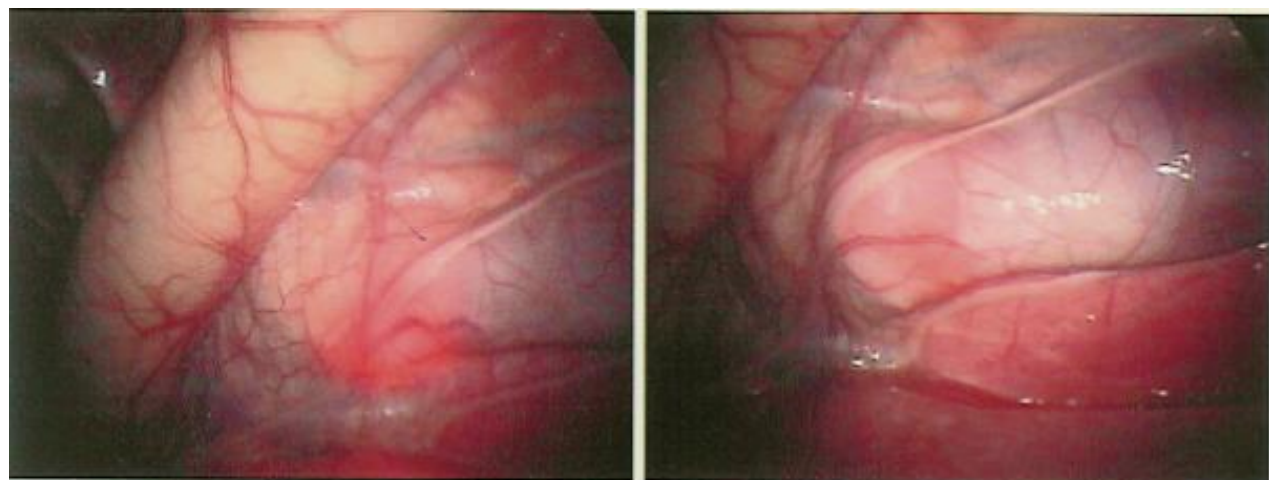
LUIS CLAUDIO  
FAC. MED. VET. SJB

97-MAY-21  
22:49

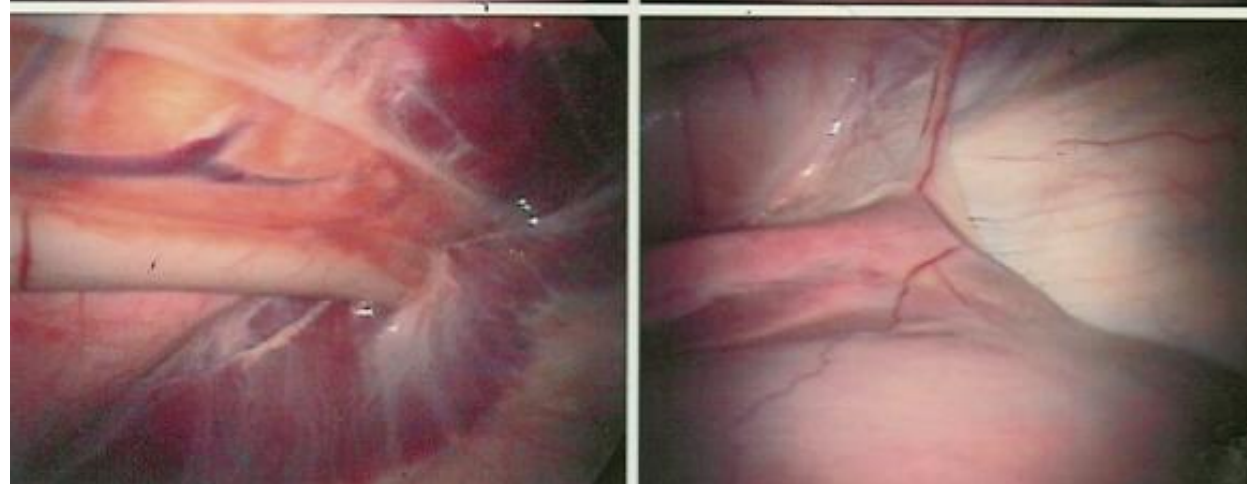
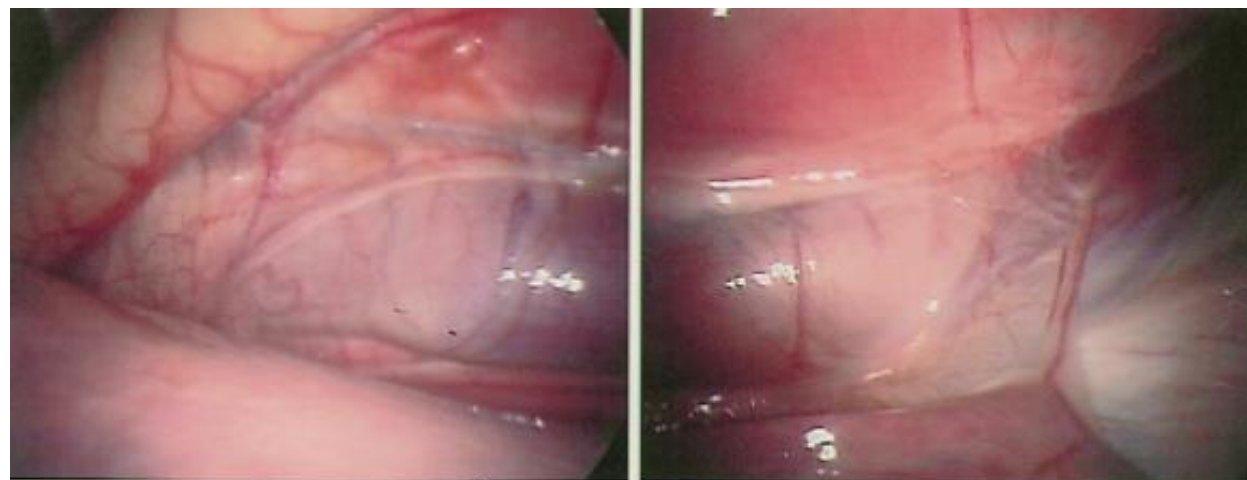


LIGHT+4  
FILM 15  
AVE

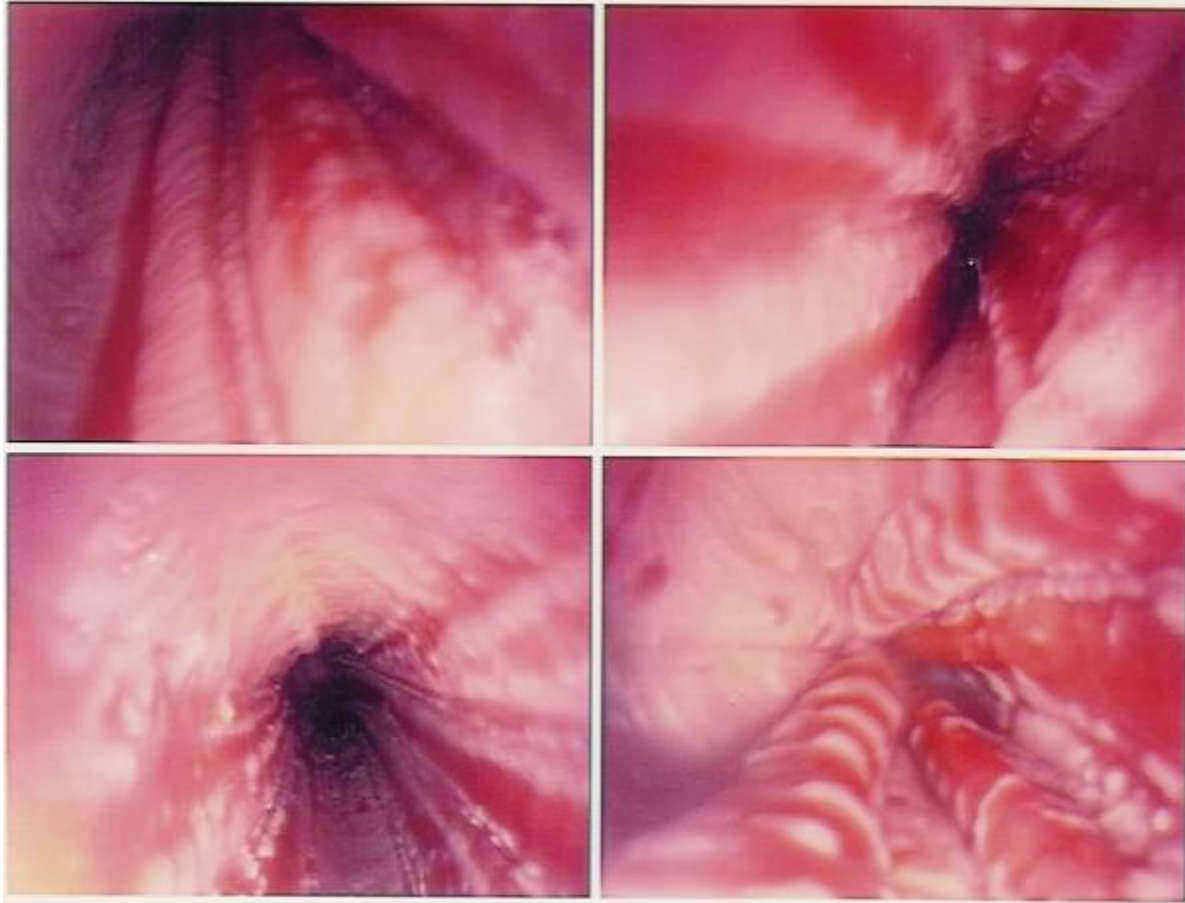
LUIS CLAUDIO  
FAC. MED. VET. SJB



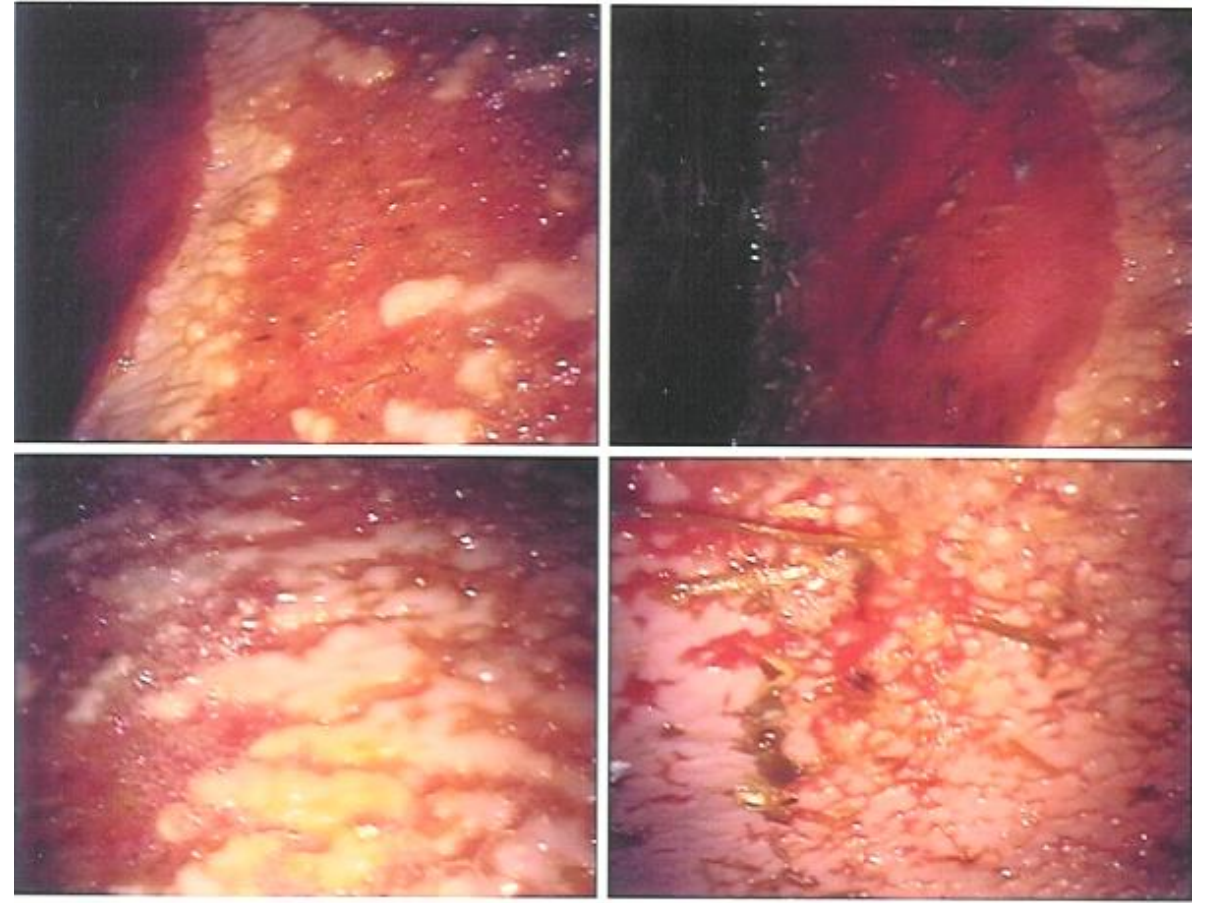
CIR. GRANDES ANIMAIS - FMVZ - USP



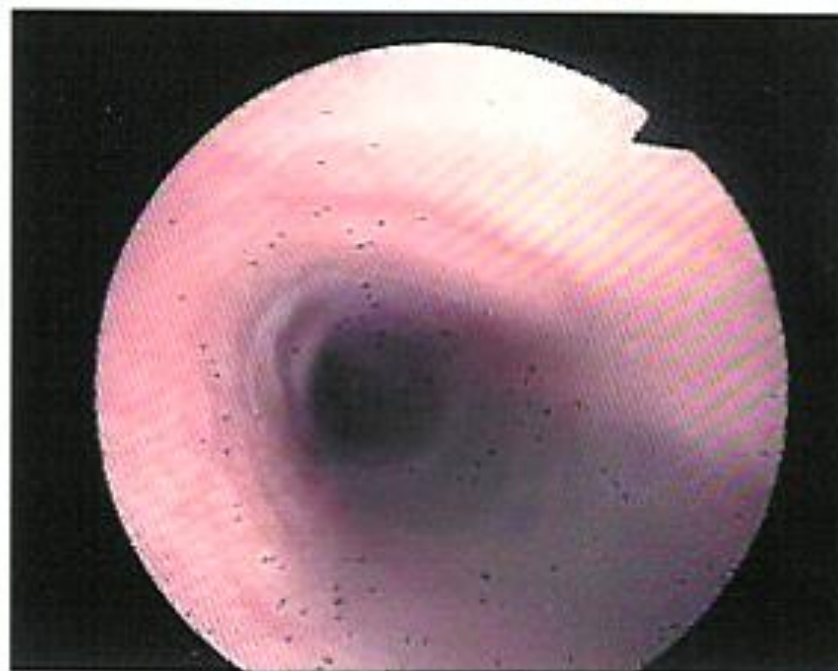
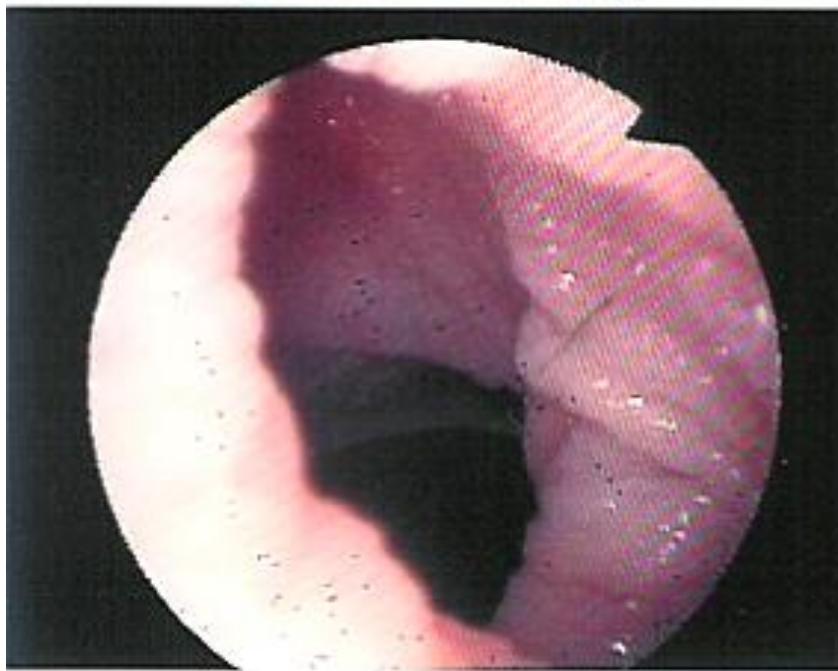
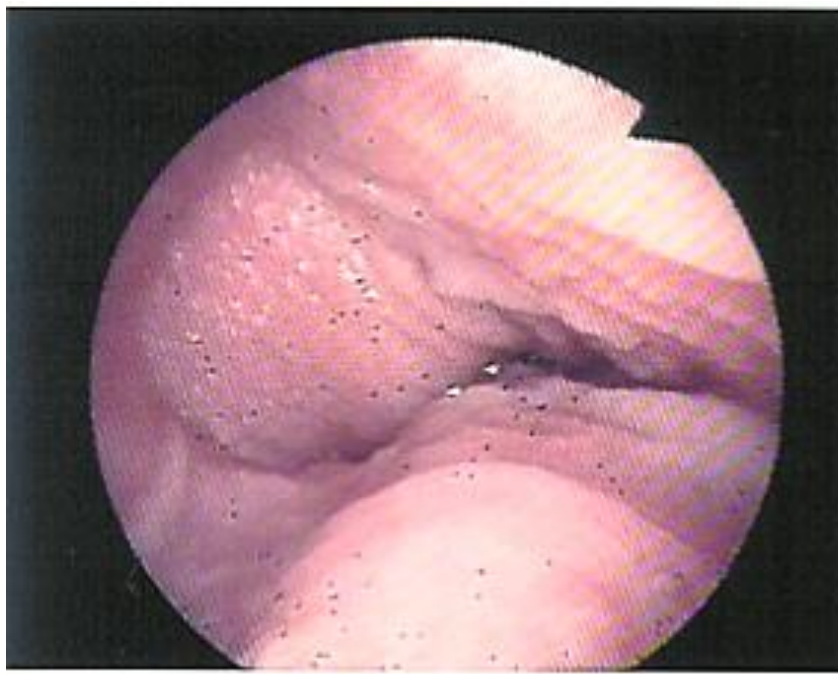
IR. GRANDES ANIMAIS - FMVZ - USP



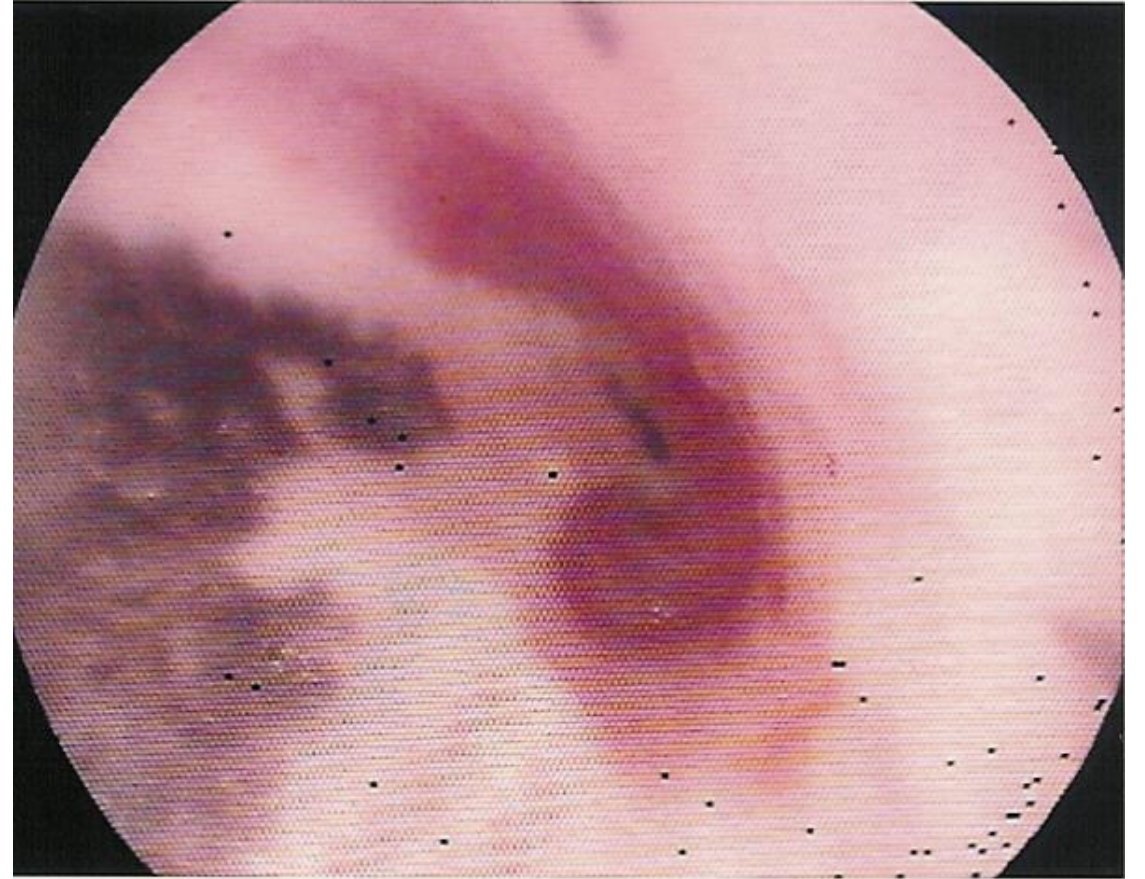
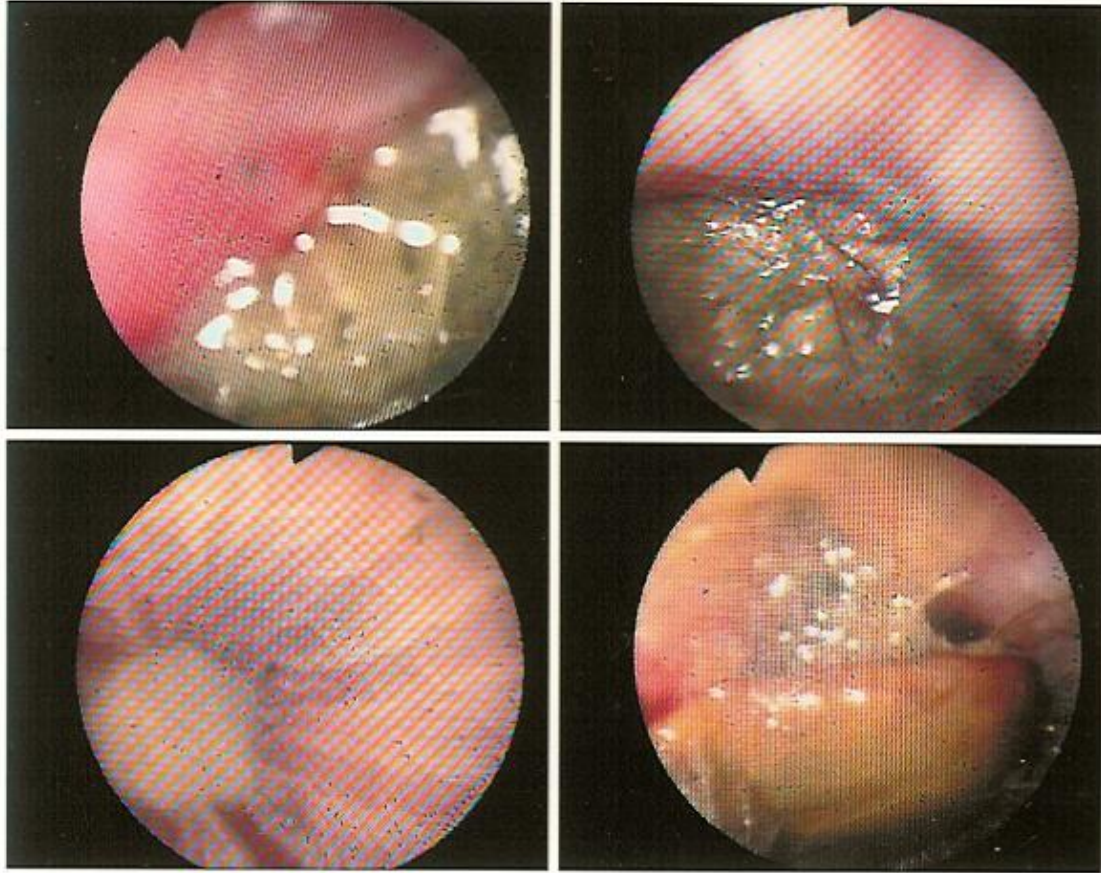
CIR. GRANDES ANIMAIS - FMVZ - USP



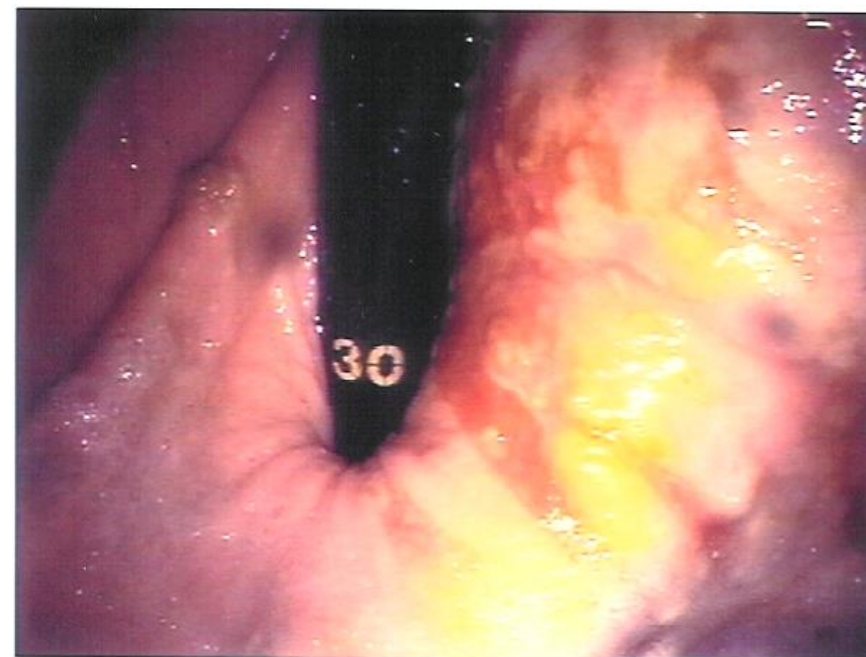
CIR. GRANDES ANIMAIS - FMVZ - USP



CIR. GRANDES ANIMAIS - FMVZ - USP

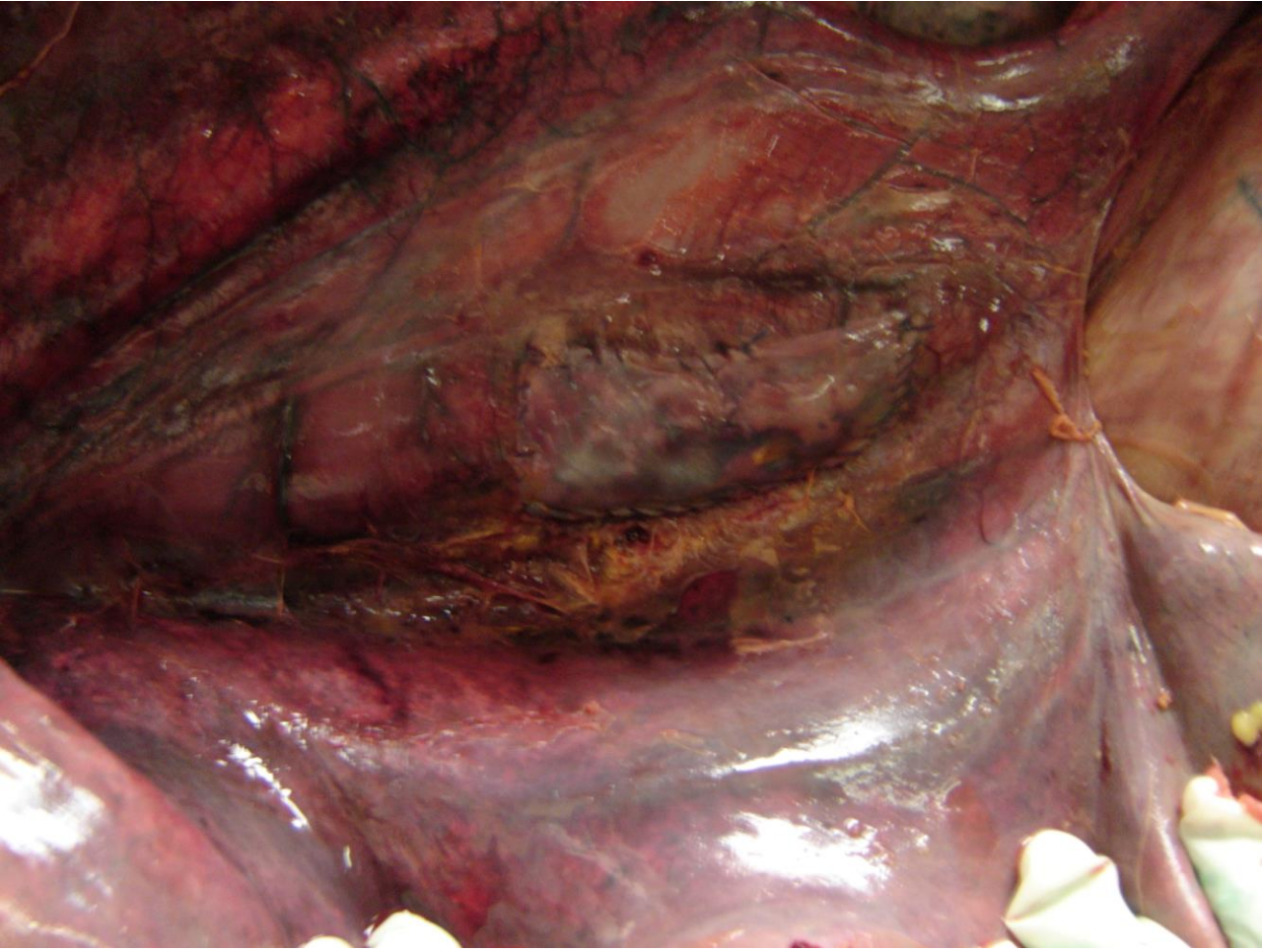


CIR GRANDES ANIMAIS - FMVZ - USP



CIR. GRANDES ANIMAIS - FMVZ - USP









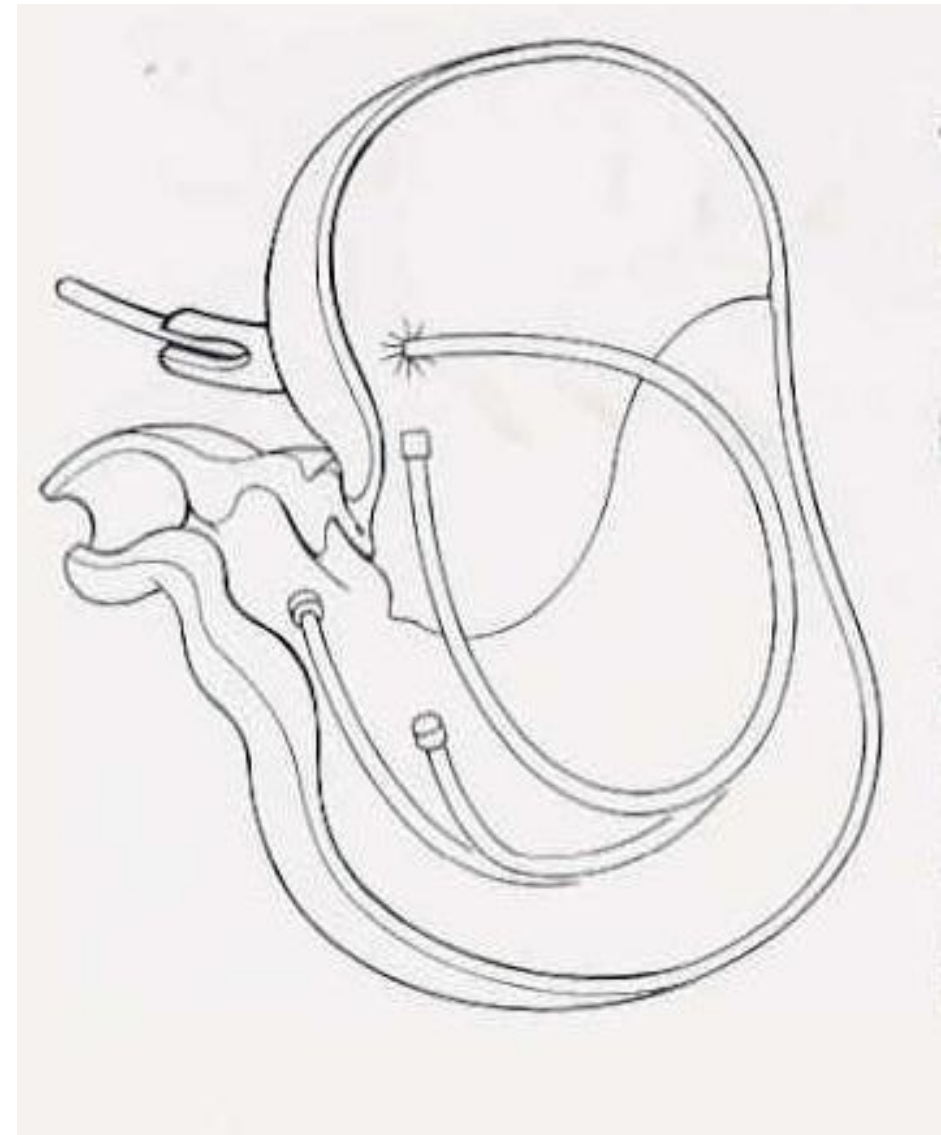


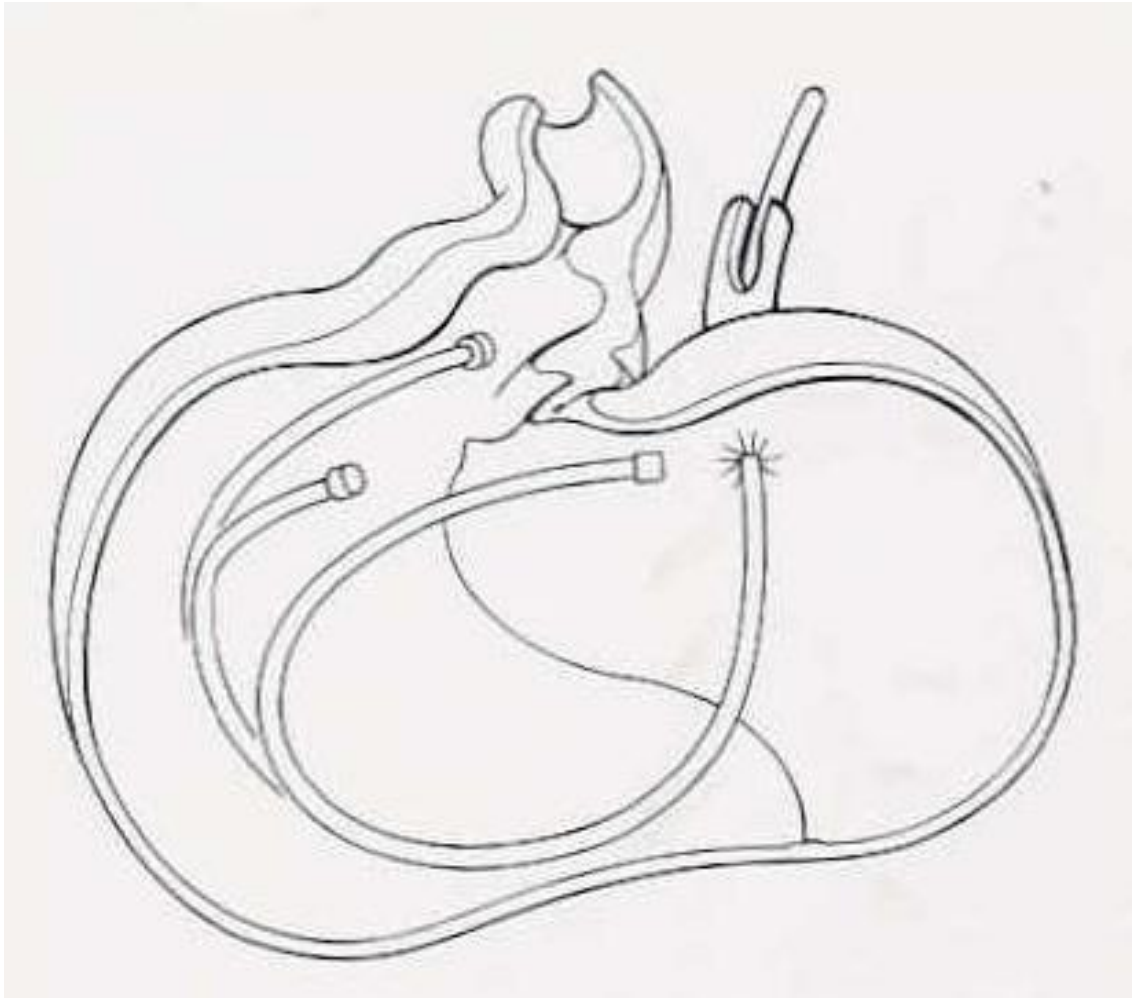


# Estômago

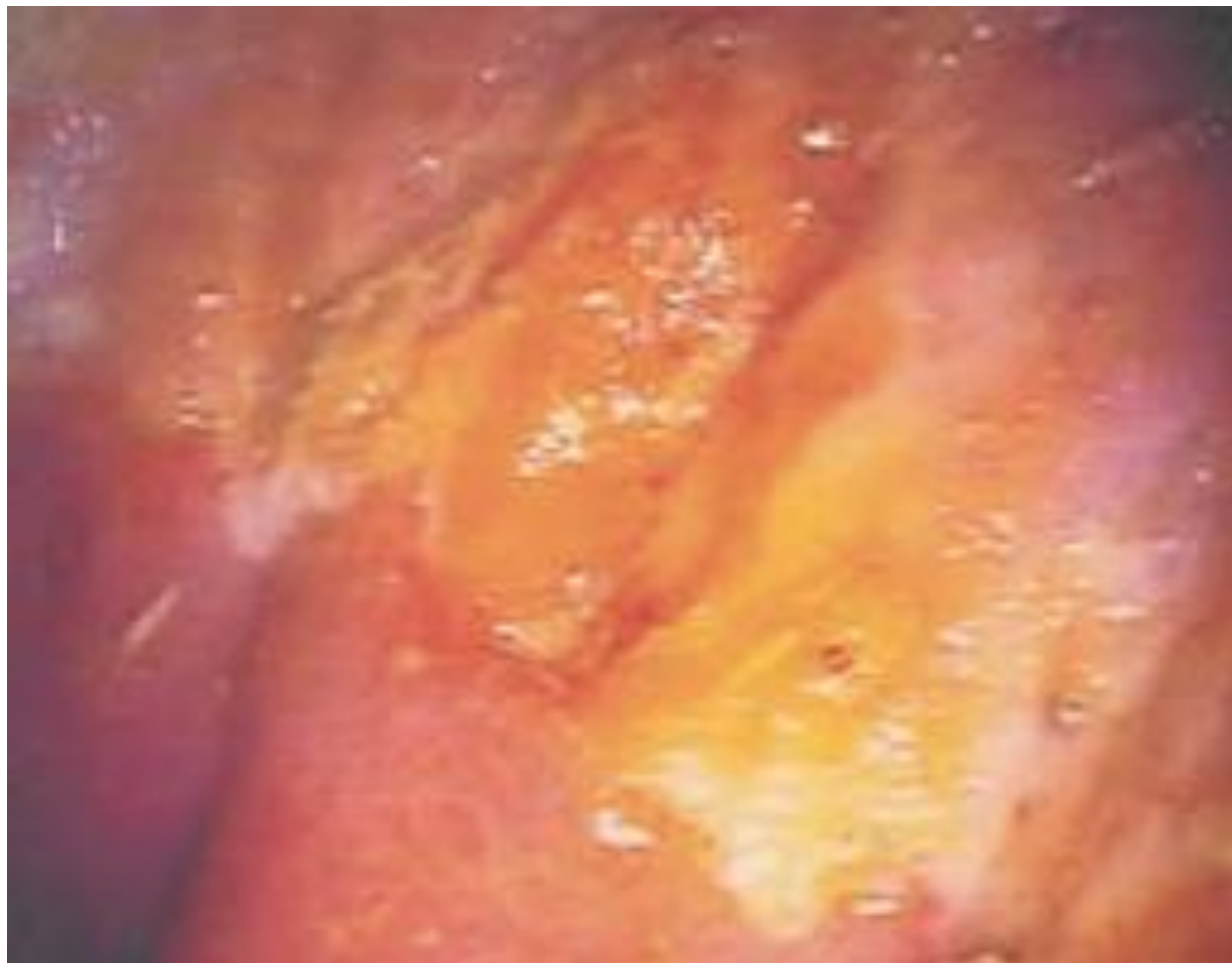
- Dimensão
- Posicionamento
- Camadas
- Acessos
- Lesões/afecções
- Ocorrência



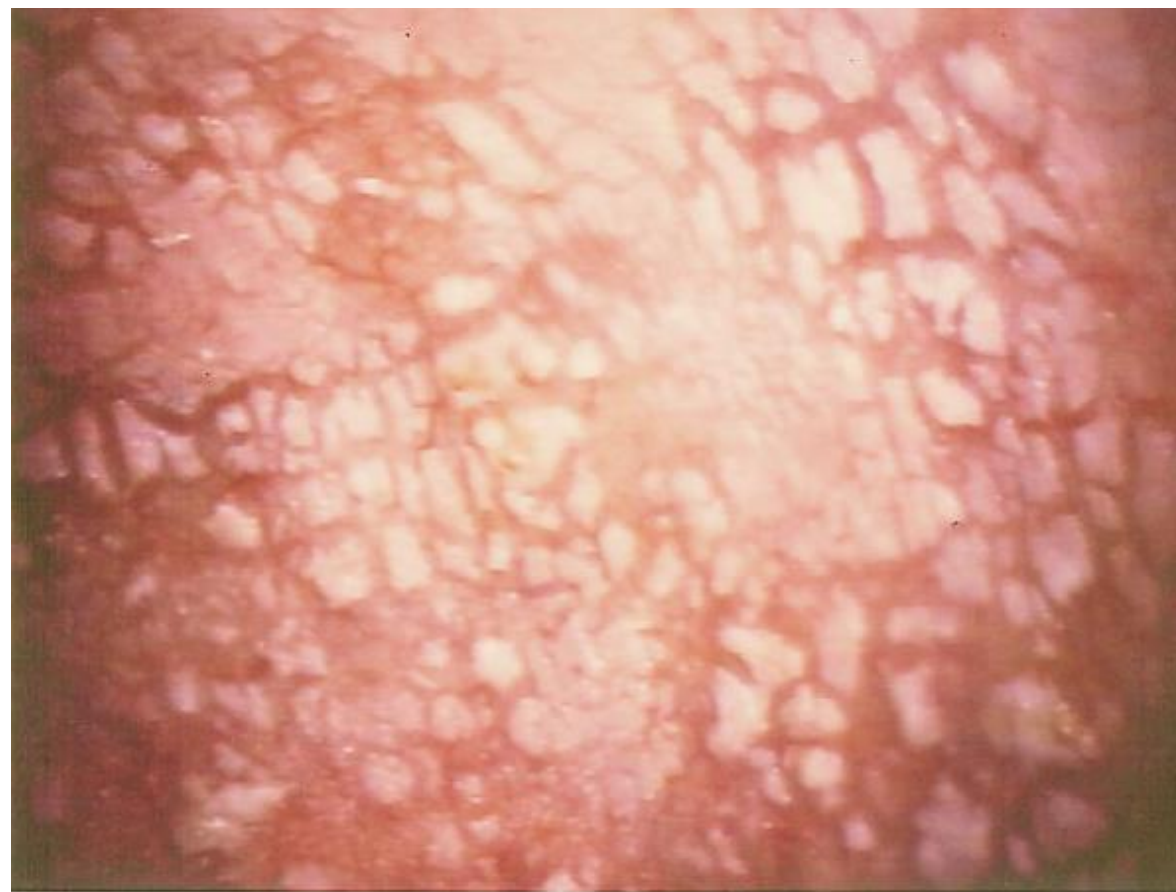






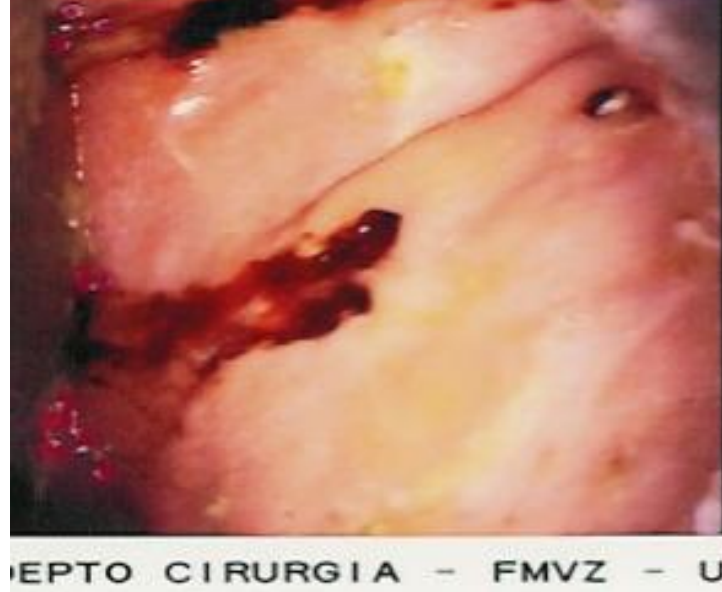
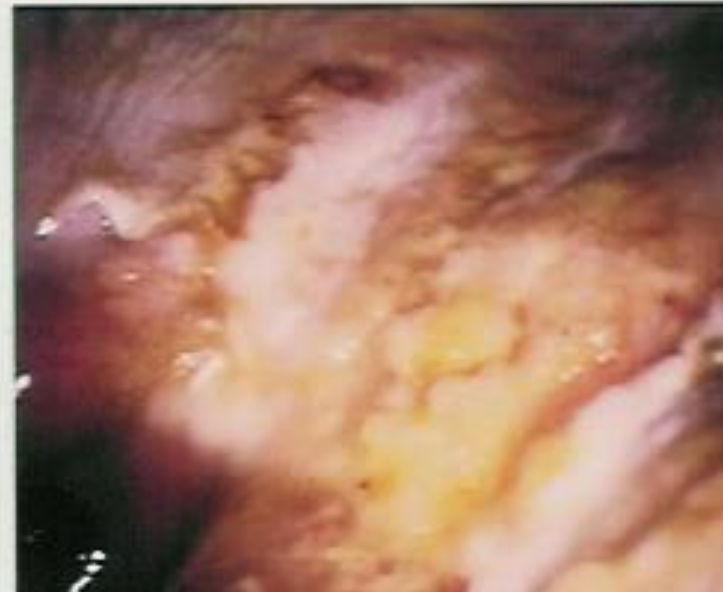


Fenilbutazona

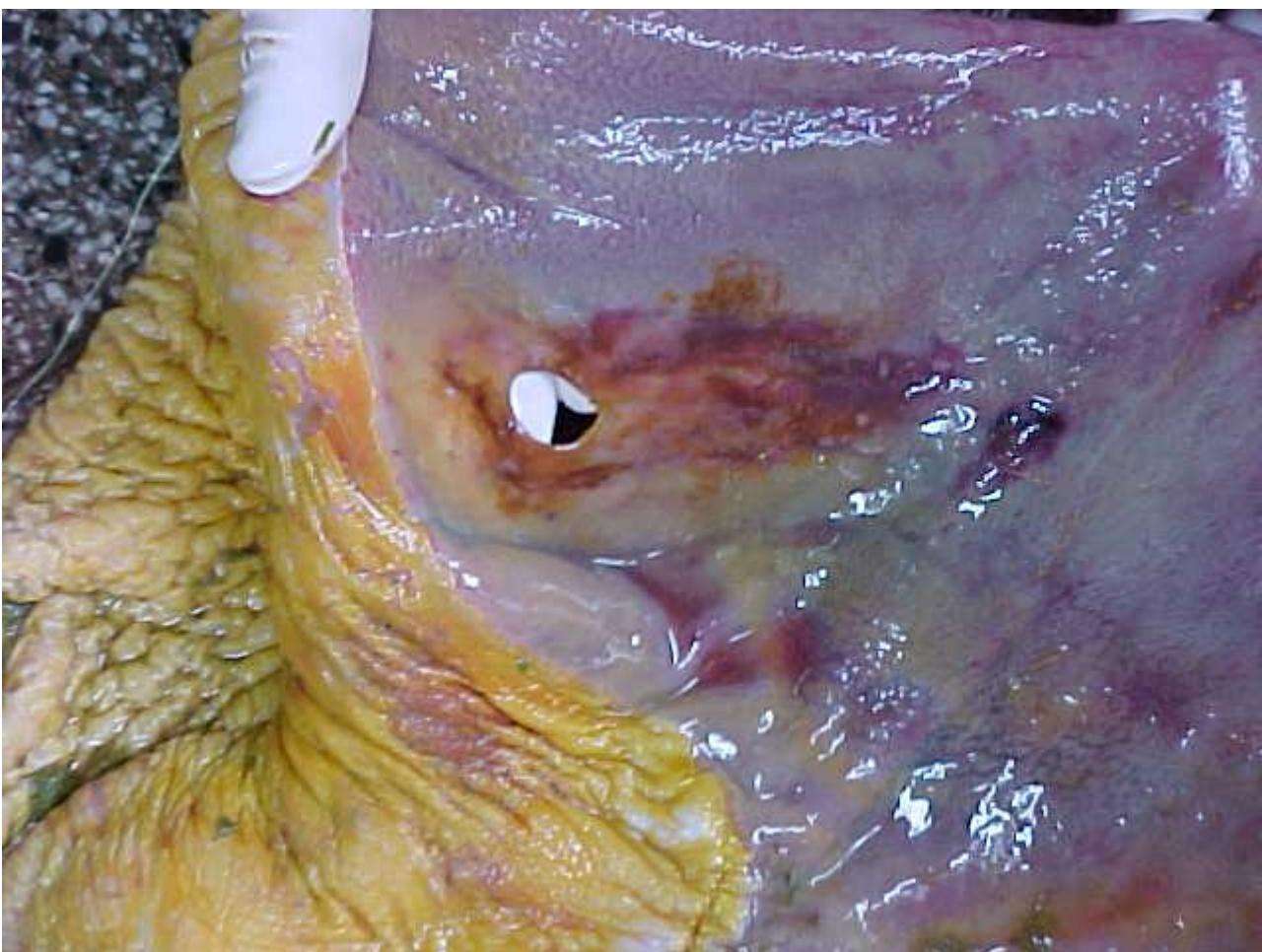
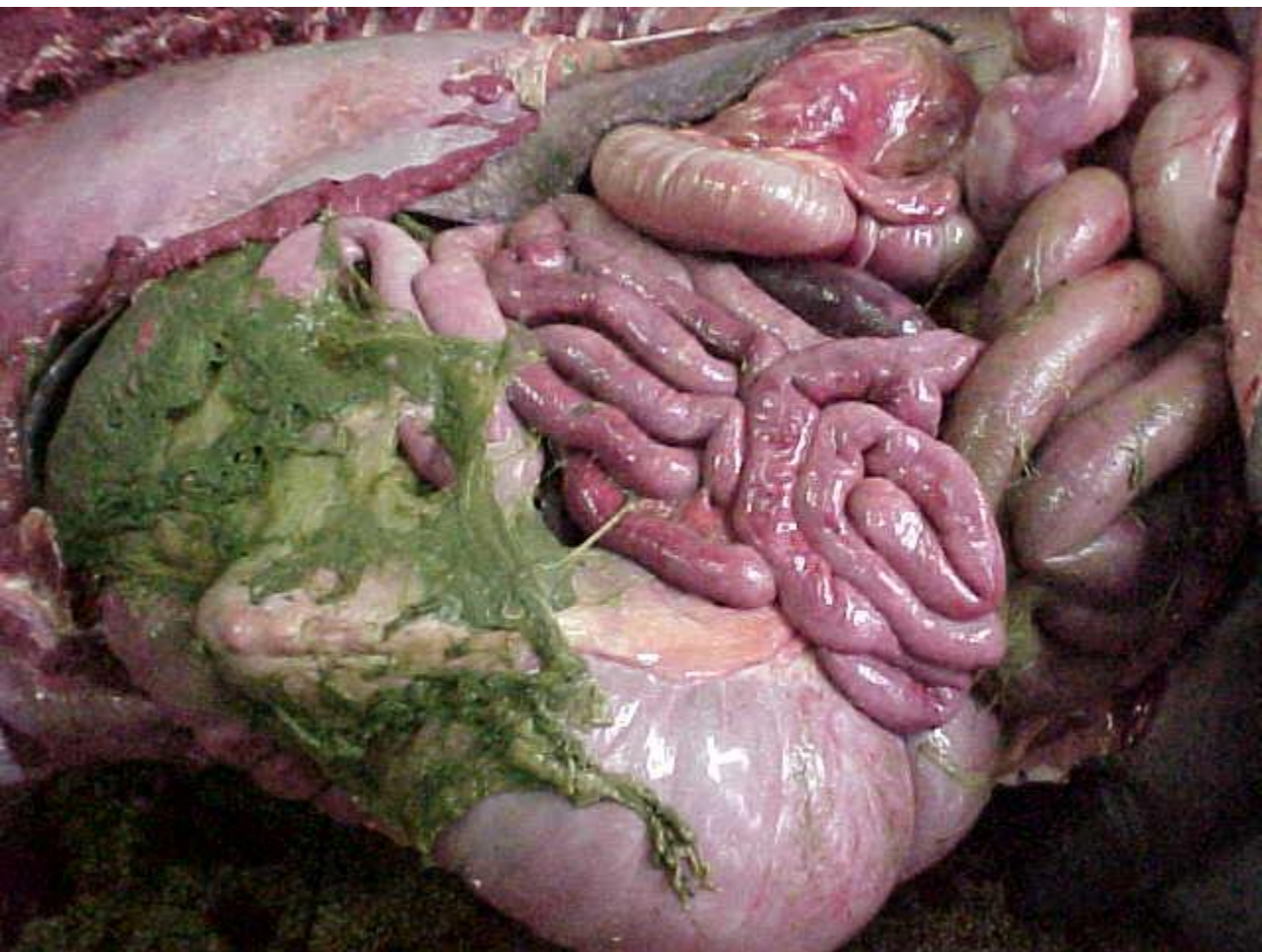


DEPTO CIRURGIA - FMVZ - USP

Flunixin meglumina











Anatomia clínico-cirúrgica de sistema  
digestório  
**(Intestinos – delgado e grosso)**

