

# Global Iron Ore Load Ports



## INFORMATION HANDBOOK

Version (1) -2008



**Wilhelmsen  
Ships Service**

# **IMPORTANT DISCLAIMER**

**The information contained herein has been compiled from third party sources and is being provided solely as a courtesy by Wilhelmsen Ships Service. This information is intended for use as a guide only. Wilhelmsen Ships Service has not undertaken to investigate and does not warrant nor make any claims as to the accuracy of the information.**

**The information provided in no way whatsoever supersedes or detracts from that available in Admiralty Charts or publications, Hydrographic Charts, Federal or State Acts, ordinances, rules or regulations, or from publications of other relevant organisations, both public and private, and should thus be read not only in conjunction with but also subject to such material, documents and publications.**

**Wilh. Wilhelmsen ASA or any of its subsidiaries shall not be liable for any consequences for any inaccuracies or omissions contained therein.**

# TABLE OF CONTENTS

<b>WSS MINERALS TEAM FEATURES</b>	<b>PAGE 4</b>
<b>WSS MINERALS TEAM LOCATIONS</b>	<b>PAGE 5</b>
<b>WSS MINERALS TEAM CONTACTS</b>	<b>PAGE 6</b>
<b>AUSTRALIA - IRON ORE PORTS</b>	<b>PAGE 7</b>
<b>INDIA - IRON ORE PORTS</b>	<b>PAGE 17</b>
<b>SOUTH AFRICA - IRON ORE PORTS</b>	<b>PAGE 27</b>
<b>SOUTH AMERICA - IRON ORE PORTS</b>	<b>PAGE 29</b>

# **WSS MINERALS TEAM**

## **- FEATURES**

**Wilhelmsen Ships Service has recognised the need for specialised commodity teams, focused on specific cargoes and trades.**

**Our Minerals Team concentrates on provision of ship agency for customer operations in the Coal, Iron Ore, Sugar, Fertilisers, Cement, Steel, Alumina and Forest Products and other Dry Bulk cargoes.**

**The Features of our Consolidated Dry Bulk Agency Service Include:**

- **Services across all Dry Bulk trades**
- **Efficient streamlined communications**
- **Comprehensive database of Dry Bulk terminal information and cost estimates**
- **Simplified funding and standardised reporting**
- **Detailed market intelligence on demand**
- **Coordination of cargo inspection services and surveys as required**
- **Documentation for shippers, receivers & vessel operators**
- **Customised services including export documentation, laycan calculations and transhipment**



# WSS MINERALS TEAM LOCATIONS



- Africa & Middle East
- China
- India
- Indonesia
- Netherlands
- North America
- Oceania
- Russia
- Singapore
- South America
- Thailand
- UK

# MINERALS TEAM CONTACTS

**AFRICA & MIDDLE EAST - Roy Davidson**

Phone: +27 35 797 995 0

Email: Roy.Davison@Wilhelmsen.com

**ASIA & OCEANIA - Jason Hawkins**

Phone: +61 3 963 009 00

Email: Jason.Hawkins@Wilhelmsen.com

**CHINA - Jennifer Wu**

Phone: +86 21 539 303 55

Email: Jennifer.Wu@wilhelmsen.com

**EASTERN EUROPE & RUSSIA - Julia Samara**

Phone: +7 916 649 649 3

Email: Julia.Samara@Wilhelmsen.com

**INDIA - Arun Nair**

Phone: +91 22 226 401 47

Email: Arun.Nair@wilhelmsen.com

**INDONESIA - Achmad Jauhari**

Phone: +62 2125525600

Email: Achmad.Jauhari@wilhelmsen.com

**NETHERLANDS - Leon Janson**

Phone: +31 010 487 798 6

Email: Leon.Janson@Wilhelmsen.com

**SINGAPORE - John Sim & Nick Chan**

Phone: +65 6395 4545

Email: John.Sim@Wilhelmsen.com / Nick.Chan@Wilhelmsen.com

**SOUTH AMERICA - Armando Sampaio**

Phone: +55 13 210 118 22

Email: Armando.Sampaio@Wilhelmsen.com

**THAILAND - Bjorn Karlsson**

Phone: +66 2 679 191 9

Email: Bjorn.Karlsson@Wilhelmsen.com

**NORTH AMERICA - Jacob Seale**

Phone: +1 251 433 345 9

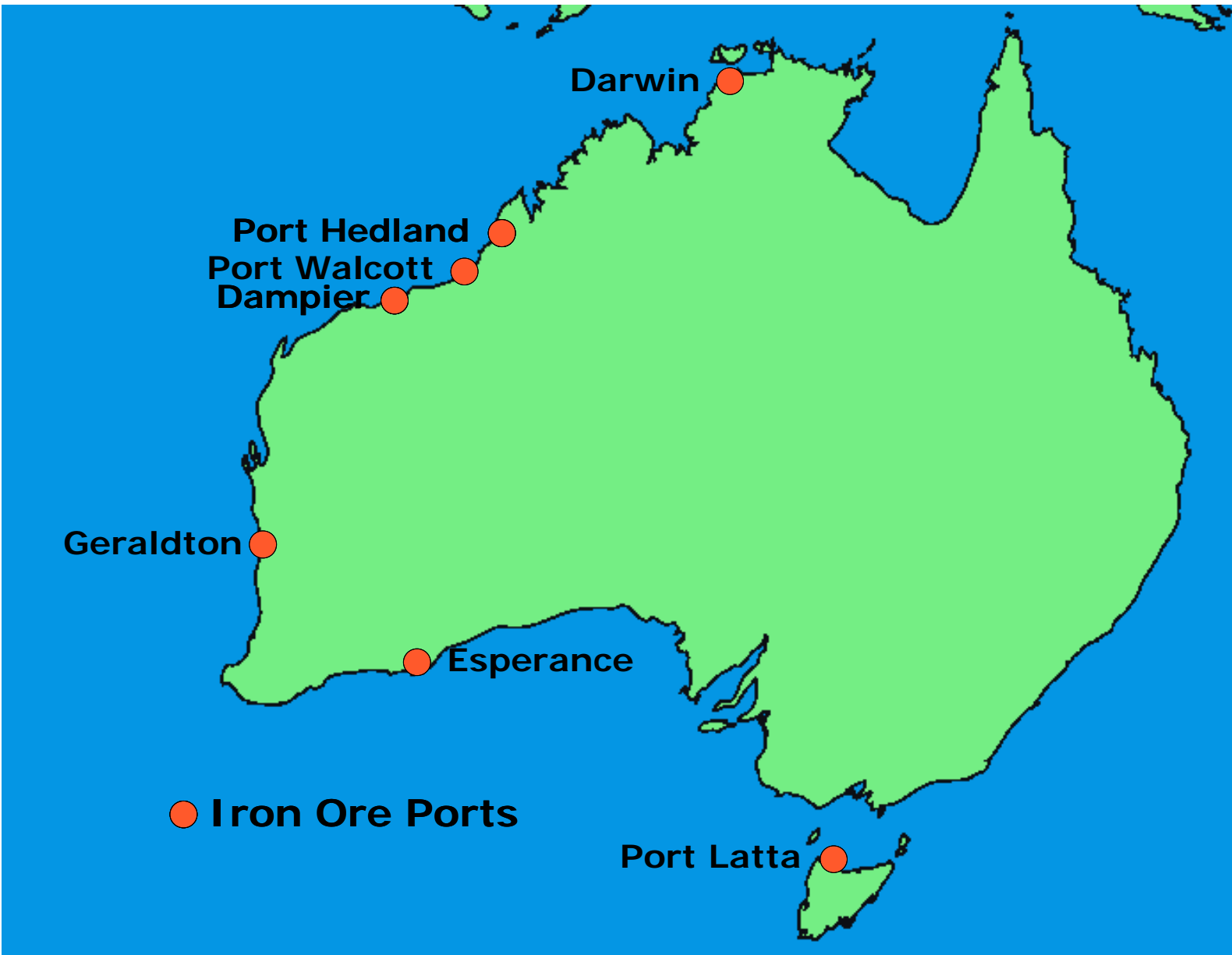
Email: Jacob.Seale@Wilhelmsen.com

**UK - James Fox**

Phone: +44 759 510 6347

Email: James.Fox@Wilhelmsen.com

# AUSTRALIA - IRON ORE PORTS



**Jason Hawkins**

**Phone: +61 3 963 009 00**

**Email: [Jason.Hawkins@Wilhelmsen.com](mailto:Jason.Hawkins@Wilhelmsen.com)**

# DAMPIER

## - PORT INFORMATION

### PORT DETAILS

<b>BRIEF PORT DESCRIPTION:</b>	One of the major port facilities servicing West Australia's Pilbara region, the port of Dampier hosts five berths at Parker Point and one berth at East Intercourse Island for the export of iron ore. Iron ore facilities are owned and operated by Rio Tinto through its Hamersley Iron and Pilbara Iron subsidiaries.
<b>TERMINAL:</b>	Parker Point
<b>NUMBER OF BERTHS:</b>	5

### PORT INFORMATION

<b>POSITION:</b>	LAT 20° 39' S, LONG 116 ° 43' E
<b>LOCATION:</b>	West Coast of Australia - 1400km NE of Perth
<b>SHIPPER(S):</b>	Rio Tinto (Hamersley Iron, Pilbara Iron)
<b>TIDE RANGE:</b>	3.2M - 5.3M

### MAX. SHIP DIMENSIONS

<b>LOA:</b>	269 M / 455 M / 330M
<b>DRAFT:</b>	14.4 M / 15.4 M / 15.1 M
<b>AIR DRAFT (at Datum):</b>	23 M / 26.3 M / 26.2 M
<b>BERTH LENGTH:</b>	267 M / 455 M / 330 M
<b>DEPTH ALONGSIDE:</b>	17.2 M / 18.8 M / 18.1 M

### LOADING FACILITIES:

<b>NUMBER OF SHIPLoadERS:</b>	Two
<b>LOAD RATE:</b>	9,500 TPH / 7,500 TPH
<b>TRAVEL:</b>	180M / 300M
<b>OUTREACH:</b>	23.8 M / 33M



# DAMPIER

## - PORT INFORMATION

### PORT DETAILS

<b>BRIEF PORT DESCRIPTION:</b>	One of the major port facilities servicing West Australia's Pilbara region, the port of Dampier hosts five berths at Parker Point and one berth at East Intercourse Island for the export of iron ore. Iron ore facilities are owned and operated by Rio Tinto through its Hamersley Iron and Pilbara Iron subsidiaries.
<b>TERMINAL:</b>	East Intercourse Island
<b>NUMBER OF BERTHS:</b>	1

### PORT INFORMATION

<b>POSITION:</b>	LAT 20° 39' S, LONG 116 ° 43' E
<b>LOCATION:</b>	West Coast of Australia - 1400km NE of Perth
<b>SHIPPER(S):</b>	Rio Tinto (Hamersley Iron, Pilbara Iron)
<b>TIDE RANGE:</b>	2.7M - 4.5M

### MAX. SHIP DIMENSIONS

<b>LOA:</b>	340M
<b>DRAFT:</b>	15.5M
<b>AIR DRAFT (at Datum):</b>	24M
<b>BERTH LENGTH:</b>	341M
<b>DEPTH ALONGSIDE:</b>	19.5M

### LOADING FACILITIES:

<b>NUMBER OF SHIPLOADERS:</b>	One
<b>LOAD RATE:</b>	9,500 TPH / 7,500 TPH
<b>TRAVEL:</b>	230 M
<b>OUTREACH:</b>	25 M



# DARWIN

## - PORT INFORMATION

### PORT DETAILS

<b>BRIEF PORT DESCRIPTION:</b>	Darwin is a port of growing significance for iron ore shipments with export operations in this port recently commenced. The port's East Arm berth facilitates iron ore loading for export from mines located further inland.
<b>TERMINAL:</b>	East Arm Wharf
<b>NUMBER OF BERTHS:</b>	1

### PORT INFORMATION

<b>POSITION:</b>	LAT: 12° 28' S, LONG: 130 ° 50' E
<b>LOCATION:</b>	Capital City of Australia's Northern Territory (North Coast of Australia).
<b>SHIPPER(S):</b>	Territory Iron Ltd
<b>TIDE RANGE:</b>	5 M - 6.9 M

### MAX. SHIP DIMENSIONS

<b>LOA:</b>	N/A
<b>DRAFT:</b>	12 M
<b>AIR DRAFT (at Datum):</b>	21.7 M
<b>BERTH LENGTH:</b>	600 M
<b>DEPTH ALONGSIDE:</b>	13 M

### LOADING FACILITIES:

<b>NUMBER OF SHIPLOADERS:</b>	1
<b>LOAD RATE:</b>	2,000 TPH
<b>TRAVEL:</b>	164 M
<b>OUTREACH:</b>	32 M



# ESPERANCE

## - PORT INFORMATION

### PORT DETAILS

<b>BRIEF PORT DESCRIPTION:</b>	Located on West Australia's southern coast, Esperance is a predominately bulk export port. Berth No. 3 at Esperance is used to load iron ore and iron ore storage is also available on site.
<b>TERMINAL:</b>	Berth 3
<b>NUMBER OF BERTHS:</b>	1

### PORT INFORMATION

<b>POSITION:</b>	LAT: 32° 52' S, LONG: 121 ° 54' E
<b>LOCATION:</b>	South West coast Australia, 720km South East of Perth
<b>SHIPPER(S):</b>	Portman Iron Ore Ltd
<b>TIDE RANGE:</b>	0.8 M - 1.2 M

### MAX. SHIP DIMENSIONS

<b>LOA:</b>	290
<b>DRAFT:</b>	17.8 M
<b>AIR DRAFT (at Datum):</b>	21.7 M
<b>BERTH LENGTH:</b>	230 M
<b>DEPTH ALONGSIDE:</b>	23 M

### LOADING FACILITIES:

<b>NUMBER OF SHIPLOADERS:</b>	1
<b>LOAD RATE:</b>	4,000 TPH
<b>TRAVEL:</b>	201.3 M
<b>OUTREACH:</b>	31.7 M



# GERALDTON

## - PORT INFORMATION

### PORT DETAILS

<b>BRIEF PORT DESCRIPTION:</b>	Geraldton currently ships 4.7mt per annum of iron ore exports. These exports are currently shipped through berth no. 4 which is an ideal loading facility for iron ore and other bulk commodities.
<b>TERMINAL:</b>	Berth 4
<b>NUMBER OF BERTHS:</b>	1

### PORT INFORMATION

<b>POSITION:</b>	LAT 28° 45' S, LONG 144 ° 45' E
<b>LOCATION:</b>	West Coast of Australia - 424km North of Perth
<b>SHIPPER(S):</b>	Murchison Metals Ltd, Midwest Corporation Ltd, Gindalbie Metals Ltd, Precious Metals Australia Ltd
<b>TIDE RANGE:</b>	0.6 M - 1.1 M

### MAX. SHIP DIMENSIONS

<b>LOA:</b>	225 M
<b>DRAFT:</b>	12.8 M
<b>AIR DRAFT (at Datum):</b>	15.09 M
<b>BERTH LENGTH:</b>	281 M
<b>DEPTH ALONGSIDE:</b>	13.1 M

### LOADING FACILITIES:

<b>NUMBER OF SHIPLOADERS:</b>	One
<b>LOAD RATE:</b>	9,500 TPH / 7,500 TPH
<b>TRAVEL:</b>	180M / 300M
<b>OUTREACH:</b>	23.8 M / 33M



# PORT HEDLAND

## - PORT INFORMATION

### PORT DETAILS

<b>BRIEF PORT DESCRIPTION:</b>	Port Hedland is a large volume, bulk mineral export port located on Australia's north west coast in the resource rich Pilbara region. Iron Ore is overwhelmingly the main cargo handled at the port, with shipper BHP Billiton providing four bulk berths for Iron Ore exports, accommodating large bulk ships.
<b>TERMINAL:</b>	Nelson Point - A & B
<b>NUMBER OF BERTHS:</b>	2

### PORT INFORMATION

<b>POSITION:</b>	Lat 21°10' S, Long 118°33' E.
<b>LOCATION:</b>	West Coast of Australia, 1700km north of Perth
<b>SHIPPER(S):</b>	BHPB
<b>TIDE RANGE:</b>	0.57m - 2.59m

### MAX. SHIP DIMENSIONS

<b>LOA:</b>	340M
<b>DRAFT:</b>	19M
<b>AIR DRAFT (at Datum):</b>	24.5M - 27.5M
<b>MAX BEAM:</b>	55M
<b>BERTH LENGTH:</b>	340M
<b>DEPTH ALONGSIDE:</b>	19M

### LOADING FACILITIES:

<b>NUMBER OF SHIPLOADERS:</b>	3
<b>LOAD RATE:</b>	5,000 TPH (Average)
<b>TRAVEL:</b>	Yes



# PORT HEDLAND

## - PORT INFORMATION

### PORT DETAILS

<b>BRIEF PORT DESCRIPTION:</b>	Port Hedland is a large volume, bulk mineral export port located on Australia's north west coast in the resource rich Pilbara region. Iron Ore is overwhelmingly the main cargo handled at the port, with shipper BHP Billiton providing four bulk berths for Iron Ore exports, accommodating large bulk ships.
<b>TERMINAL:</b>	Finucane Island Terminals
<b>NUMBER OF BERTHS:</b>	2

### PORT INFORMATION

<b>POSITION:</b>	Lat 20°19' S, Long 118°34' E.
<b>LOCATION:</b>	West Coast of Australia, 1700km north of Perth
<b>SHIPPER(S):</b>	BHPB
<b>TIDE RANGE:</b>	1.4m - 3.4m

### MAX. SHIP DIMENSIONS

<b>LOA:</b>	325M - 340M
<b>DRAFT:</b>	19.5M
<b>AIR DRAFT (at Datum):</b>	N/A
<b>MAX BEAM:</b>	55M / 56M
<b>BERTH LENGTH:</b>	403M / 430M
<b>DEPTH ALONGSIDE:</b>	19M

### LOADING FACILITIES:

<b>NUMBER OF SHIPLoadERS:</b>	2
<b>LOAD RATE:</b>	6,000 TPH (Average)
<b>TRAVEL:</b>	278M
<b>OUTREACH:</b>	27.5M



# PORT HEDLAND

## - PORT INFORMATION

### PORT DETAILS

<b>BRIEF PORT DESCRIPTION:</b>	Port Hedland is a large volume, bulk mineral export port located on Australia's north west coast in the resource rich Pilbara region. Iron Ore is overwhelmingly the main cargo handled at the port, with shipper BHP Billiton providing four bulk berths for Iron Ore exports, accommodating large bulk ships. Fortescue Metals Group also has a facility for exporting iron ore at this port.
<b>TERMINAL:</b>	Anderson Point Terminal
<b>NUMBER OF BERTHS:</b>	2

### PORT INFORMATION

<b>POSITION:</b>	LAT 20°19' S, LONG 118°34' E.
<b>LOCATION:</b>	West Coast of Australia, 1700km north of Perth
<b>SHIPPER(S):</b>	FMG
<b>TIDE RANGE:</b>	1.4m - 3.4m

### MAX. SHIP DIMENSIONS

<b>LOA:</b>	On Application
<b>DRAFT:</b>	18.7 M
<b>AIR DRAFT (at Datum):</b>	26.8 M
<b>MAX BEAM:</b>	60 M
<b>BERTH LENGTH:</b>	756 M (Both Berths)
<b>DEPTH ALONGSIDE:</b>	19.7 M

### LOADING FACILITIES:

<b>NUMBER OF SHIPLOADERS:</b>	2
<b>LOAD RATE:</b>	6,500 TPH (Average)
<b>TRAVEL:</b>	175 M
<b>OUTREACH:</b>	32.3 M



# PORT LATTA

## - PORT INFORMATION

### PORT DETAILS

<b>BRIEF PORT DESCRIPTION:</b>	Tasmania's Port Latta is an ore jetty located over 1.8km from the shore. This port is in a remote part of the Australian Island of Tasmania and its sole function is the export of palletised iron ore.
<b>TERMINAL:</b>	Port Latta Iron Ore Jetty
<b>NUMBER OF BERTHS:</b>	One

### PORT INFORMATION

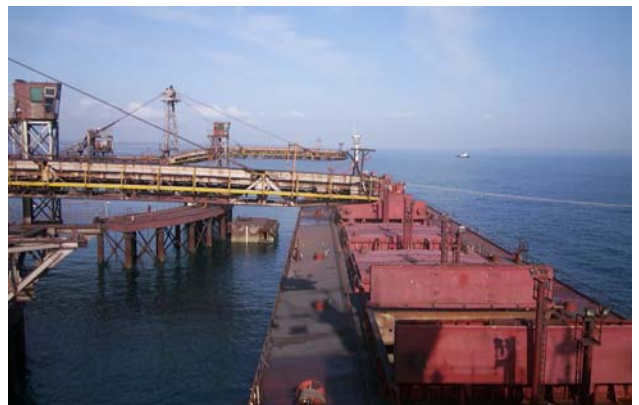
<b>POSITION:</b>	LAT: 40° 50' S, LONG: 145° 23' E
<b>LOCATION:</b>	Located 5 nautical miles ESE of Stanley in North West Tasmania
<b>SHIPPER(S):</b>	BHPB
<b>TIDE RANGE:</b>	0.6 M - 2.5 M

### MAX. SHIP DIMENSIONS

<b>LOA:</b>	245 M
<b>DRAFT:</b>	15.25 M
<b>AIR DRAFT (at Datum):</b>	N/A
<b>DEPTH ALONGSIDE:</b>	16.75 M

### LOADING FACILITIES:

<b>NUMBER OF SHIPLOADERS:</b>	Two (only one active at a time)
<b>LOAD RATE:</b>	3,000 TPH
<b>TRAVEL:</b>	Radial
<b>OUTREACH:</b>	24.82 M



# PORT WALCOTT

## - PORT INFORMATION

### PORT DETAILS

<b>BRIEF PORT DESCRIPTION:</b>	Port Walcott hosts one of Australia's longest, deepest and highest wharves, which is used to ship iron ore. Rio Tinto is the local shipper and the port facilities are operated by their subsidiary Pilbara iron.
<b>TERMINAL:</b>	Port Walcott - Berth 1 & 2
<b>NUMBER OF BERTHS:</b>	2

### PORT INFORMATION

<b>POSITION:</b>	LAT 20° 39' S, Longitude 116 ° 43' E
<b>LOCATION:</b>	West Coast of Australia - 1400km NE of Perth
<b>SHIPPER(S):</b>	Rio Tinto (Hamersley Iron, Pilbara Iron)
<b>TIDE RANGE:</b>	1.4M - 3.4M

### MAX. SHIP DIMENSIONS

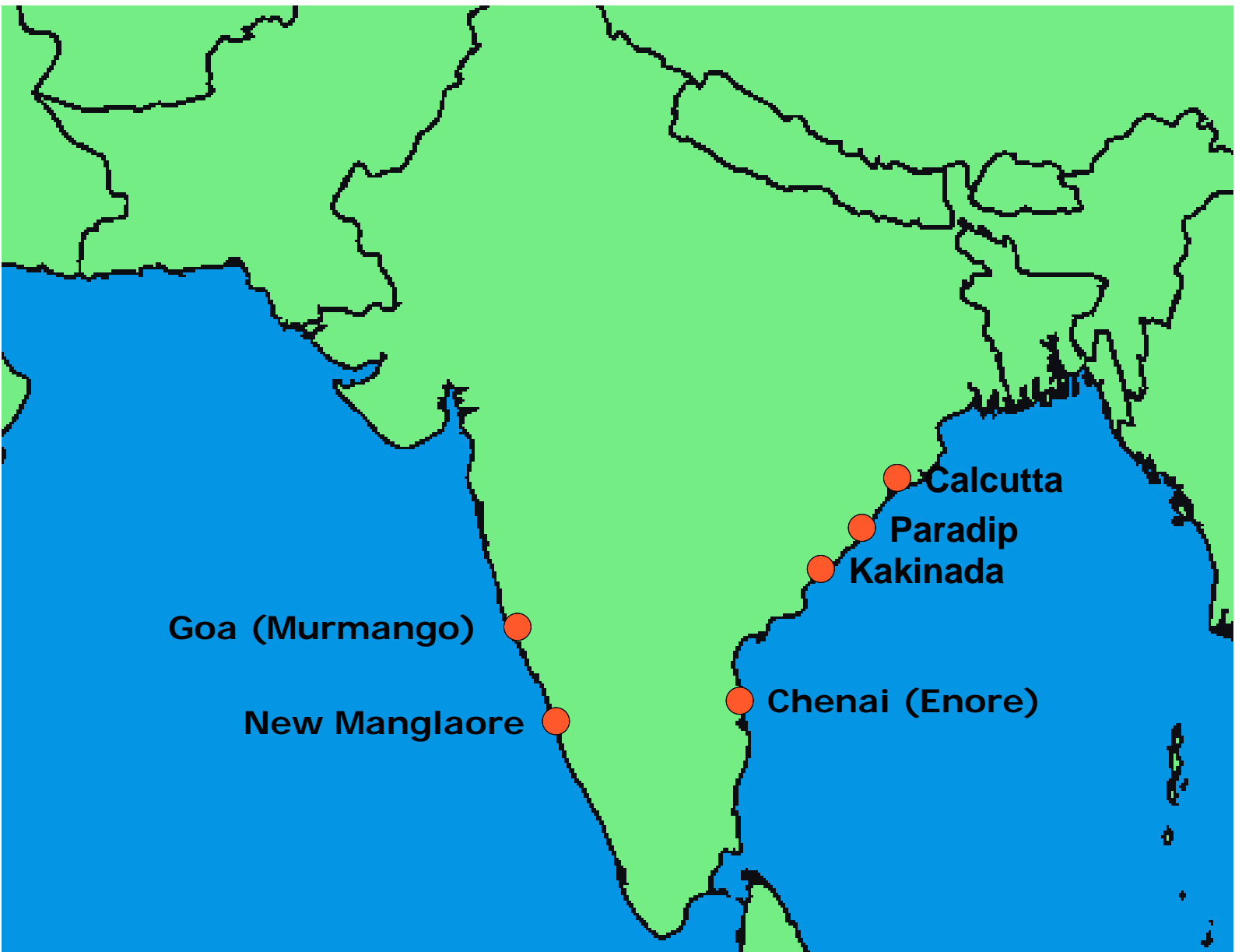
<b>LOA:</b>	N/a
<b>DRAFT:</b>	15.6 M
<b>AIR DRAFT (at Datum):</b>	20 M
<b>BERTH LENGTH:</b>	400 M +
<b>DEPTH ALONGSIDE:</b>	19.1 M / 19.4 M

### LOADING FACILITIES:

<b>NUMBER OF SHIPLOADERS:</b>	Two (Slewing Conveyor Type)
<b>LOAD RATE:</b>	8000 TPH
<b>TRAVEL:</b>	312 M / 243 M
<b>OUTREACH:</b>	30.5 M / 27.3 M



# INDIA - IRON ORE PORTS



**Arun Nair**

**Phone: +91 22 226 401 47**

**Email: [Arun.Nair@wilhelmsen.com](mailto:Arun.Nair@wilhelmsen.com)**

# CALCUTTA (HALDIA) - PORT INFORMATION

## PORT DETAILS

<b>BRIEF PORT DESCRIPTION:</b>	The large Indian city of Calcutta in India is home of the Haldia dock complex where a variety of bulk cargoes including iron ore are handled.
<b>TERMINAL:</b>	Berth #: 3
<b>NUMBER OF BERTHS:</b>	One

## PORT INFORMATION

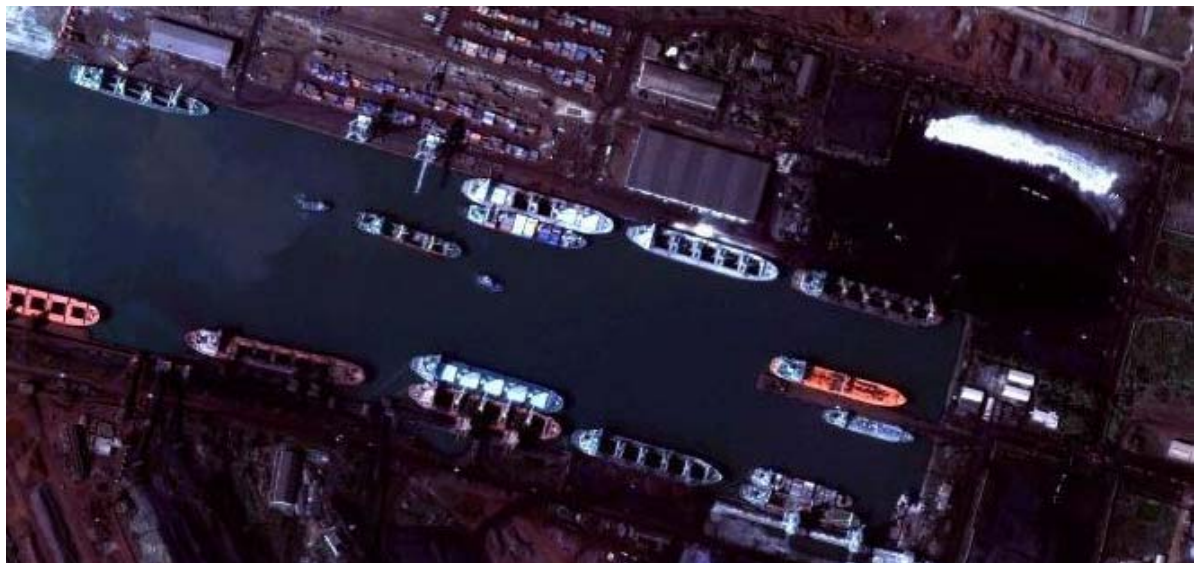
<b>POSITION:</b>	LAT: 22° 32' N, LONG: 88° 18' E
<b>LOCATION:</b>	North East India, near the Bangladesh border
<b>SHIPPER(S):</b>	Various
<b>TIDE RANGE:</b>	0.5 M - 3 M

## MAX. SHIP DIMENSIONS

<b>LOA:</b>	240 M
<b>DRAFT:</b>	15 M
<b>AIR DRAFT (at Datum):</b>	15 M
<b>BERTH LENGTH:</b>	194 M
<b>DEPTH ALONGSIDE:</b>	16 M

## LOADING FACILITIES:

<b>NUMBER OF SHIPLoadERS:</b>	Two
<b>LOAD RATE:</b>	1500 TPH



# CHENAI

## - PORT INFORMATION

### PORT DETAILS

<b>BRIEF PORT DESCRIPTION:</b>	Chennai on India's East coast is the country's deepest draft port where Iron Ore is loaded, making it an attractive destination for large capesize vessels loading this cargo from India.
<b>TERMINAL:</b>	Iron Ore Berth
<b>NUMBER OF BERTHS:</b>	One

### PORT INFORMATION

<b>POSITION:</b>	LAT: 13° 06' N, LONG: 80° 18' E
<b>LOCATION:</b>	South East India
<b>SHIPPER(S):</b>	Multiple
<b>TIDE RANGE:</b>	0.5M - 1.5 M

### MAX. SHIP DIMENSIONS

<b>LOA:</b>	274 M
<b>DRAFT:</b>	16.7 M
<b>AIR DRAFT (at Datum):</b>	16 M
<b>BERTH LENGTH:</b>	290 M
<b>DEPTH ALONGSIDE:</b>	17.2 M

### LOADING FACILITIES:

<b>NUMBER OF SHIPLOADERS:</b>	One
<b>LOAD RATE:</b>	25,00 TPD
<b>TRAVEL:</b>	Fixed



# CHENAI (ENNORE) - PORT INFORMATION

## PORT DETAILS

### BRIEF PORT DESCRIPTION:

Ennore is situated on the coromandal coast about 24km north of Chennai Port along the coast line, in the State of Tamil Nadu, India, . It is the 12th Major Port in India and the first Corporatised Major Port in India. Ennore Port was originally conceived as a satellite port to the Chennai Port. Excellent Road Connectivity to NH4 , NH 5 & NH 45 - linked to Chennai - Kolkata, BG main connectivty to Chennai Airport. The first Corporatised Port in the Country

**TERMINAL:** Inner Basin

**NUMBER OF BERTHS:** One

## PORT INFORMATION

**POSITION:** LAT: 13° 15' N, LONG: 80° 20' E

**LOCATION:** Near Chennai Port

**SHIPPER(S):** Various

**TIDE RANGE:** 1 M - 1.2 M

## MAX. SHIP DIMENSIONS

**LOA:** 280 M

**DRAFT:** 13.5 M

**AIR DRAFT (at Datum):** N/A

**BERTH LENGTH:** N/A

**DEPTH ALONGSIDE:** 15 M

## LOADING FACILITIES:

**NUMBER OF SHIPLoadERS:** Barge Loading

**LOAD RATE:** 8,000 TPD



# GOA (MURMUGAO) - PORT INFORMATION

## PORT DETAILS

<b>BRIEF PORT DESCRIPTION:</b>	The port of Marmugao located near Goa in India is the nation's premier iron ore export port. The port has well established facilities and a wide range of services are available.
<b>TERMINAL:</b>	Berth No. 9
<b>NUMBER OF BERTHS:</b>	One

## PORT INFORMATION

<b>POSITION:</b>	LAT: 15° 24' N, LONG: 73° 48' E
<b>LOCATION:</b>	Central West coast of India
<b>SHIPPER(S):</b>	Multiple
<b>TIDE RANGE:</b>	1 M - 2.3 M

## MAX. SHIP DIMENSIONS

<b>LOA:</b>	335 M
<b>DRAFT:</b>	13 M
<b>AIR DRAFT (at Datum):</b>	19.5 M
<b>BERTH LENGTH:</b>	335 M
<b>DEPTH ALONGSIDE:</b>	13.7 M

## LOADING FACILITIES:

<b>NUMBER OF SHIPLOADERS:</b>	Two
<b>LOAD RATE:</b>	4,000 TPH
<b>TRAVEL:</b>	Yes
<b>OUTREACH:</b>	21.5 M



# GOA (MV ORISSA)

## - PORT INFORMATION

### PORT DETAILS

<b>BRIEF PORT DESCRIPTION:</b>	The port of Marmugao located near Goa in India is the nation's premier iron ore export port. The port has well established facilities and a wide range of services are available. MV Orissa is an offshore transshipment facility.
<b>TERMINAL:</b>	MV Orissa
<b>NUMBER OF BERTHS:</b>	One

### PORT INFORMATION

<b>POSITION:</b>	LAT: 15° 24' N, LONG: 73° 48' E
<b>LOCATION:</b>	Central West coast of India
<b>SHIPPER(S):</b>	Multiple
<b>TIDE RANGE:</b>	1 M - 2.3 M

### MAX. SHIP DIMENSIONS

<b>LOA:</b>	335 M
<b>DRAFT:</b>	13 M
<b>AIR DRAFT (at Datum):</b>	N/A
<b>BERTH LENGTH:</b>	335 M
<b>DEPTH ALONGSIDE:</b>	18M

### LOADING FACILITIES:

<b>NUMBER OF SHIPLOADERS:</b>	Two
<b>LOAD RATE:</b>	25,000 TPD
<b>TRAVEL:</b>	Fixed



# KAKINADA - PORT INFORMATION

## PORT DETAILS

<b>BRIEF PORT DESCRIPTION:</b>	Kakinada is a rapidly developing port city due to its 'Special Economic Zone' Status. The port hosts a deep-water iron ore loading facility. The presence of a small island 'Hope Island' provides shelter for vessels moored here, making this port a natural harbour.
<b>TERMINAL:</b>	Kakinada Deep Water Port
<b>NUMBER OF BERTHS:</b>	2

## PORT INFORMATION

<b>POSITION:</b>	LAT: 17' 16" N. LON: 82' 48" E.
<b>LOCATION:</b>	Kakinada Deep Water Port is located on East Coast of India. Its in East Godavari district of Andhra Pradesh.
<b>SHIPPER(S):</b>	Various
<b>TIDE RANGE:</b>	0.5 M

## MAX. SHIP DIMENSIONS

<b>LOA:</b>	190 M
<b>DRAFT:</b>	11 M
<b>AIR DRAFT (at Datum):</b>	N/A
<b>MAX BEAM:</b>	32.4 M
<b>BERTH LENGTH:</b>	210 M
<b>DEPTH ALONGSIDE:</b>	10.5 M

## LOADING FACILITIES:

<b>NUMBER OF SHIPLOADERS:</b>	1
<b>LOAD RATE:</b>	20000 Tons Per Day.
<b>TRAVEL:</b>	Yes - Middle Berth to South Berth
<b>OUTREACH:</b>	30 M



# NEW MANGALORE - PORT INFORMATION

## PORT DETAILS

<b>BRIEF PORT DESCRIPTION:</b>	Abutting the Arabian sea, Nestled between the Netravathi & Gurpur rivers lays the Quaint town of Mangalore. Railway links spread into Maharastra, Kerala, Tamilnadu besides the hinterland. 3 highways connected to the Port (i.e.) NH 17, NH 48 & NH 13.
<b>TERMINAL:</b>	Berth #: 6 & 7
<b>NUMBER OF BERTHS:</b>	Two

## PORT INFORMATION

<b>POSITION:</b>	LAT: 12° 55' N, LONG: 74° 48' E
<b>LOCATION:</b>	170 N. Miles south of Murmagoa & 191 N. Miles north of Cochin Port
<b>SHIPPER(S):</b>	Various
<b>TIDE RANGE:</b>	1 M - 1.5 M

## MAX. SHIP DIMENSIONS

<b>LOA:</b>	190 M
<b>DRAFT:</b>	9.5 M
<b>AIR DRAFT (at Datum):</b>	N/A
<b>BERTH LENGTH:</b>	198 M
<b>DEPTH ALONGSIDE:</b>	10 M

## LOADING FACILITIES:

<b>NUMBER OF SHIPLOADERS:</b>	By Ship's Gear
<b>LOAD RATE:</b>	1500 Tons Per Shift



# NEW MANGALORE - PORT INFORMATION

## PORT DETAILS

### BRIEF PORT DESCRIPTION:

Abutting the Arabian sea, Nestled between the Netravathi & Gurpur rivers is the town of Mangalore. Railway links spread into Maharashtra, Kerala, Tamilnadu besides the hinterland. 3 highways connected to the Port (i.e.) NH 17, NH 48 & NH 13.

**TERMINAL:** B # 14

**NUMBER OF BERTHS:** 2

## PORT INFORMATION

**POSITION:** LAT 12° 55' LONG 74° 48'

**LOCATION:** 170 N. Miles south of Murmagoa & 191 N. Miles north of Cochin Port

**SHIPPER(S):** Various

**TIDE RANGE:** 1 to 1.5 Mtrs

## MAX. SHIP DIMENSIONS

**LOA:** 225 Mtrs

**DRAFT:** 12.50 Mtrs

**AIR DRAFT (at Datum):** No Restrictions

**MAX BEAM:** No Restrictions

**BERTH LENGTH:** 350 Mtrs

**DEPTH ALONGSIDE:** 13.50 Mtrs with 1 mtr tide

## LOADING FACILITIES:

**NUMBER OF SHIPLOADERS:** By Mobile cranes (Capacity 75 Mts)

**LOAD RATE:** 2,000 to 2,500 Mts per shift/per gang



# PARADIP- PORT INFORMATION

## PORT DETAILS

### BRIEF PORT DESCRIPTION:

Paradip has a good proximity to a range of natural resources, leading to its development as a bulk export centre. This port's natural features mean that it is safe and sheltered all year round.

### TERMINAL:

Iron Ore Berth

### NUMBER OF BERTHS:

One

## PORT INFORMATION

### POSITION:

LAT: 20° 16' N, LONG: 86° 41' E

### LOCATION:

North East India

### SHIPPER(S):

Multiple

### TIDE RANGE:

1.5 M - 2.9 M

## MAX. SHIP DIMENSIONS

### LOA:

260 M

### DRAFT:

13 M

### AIR DRAFT (at Datum):

14.3 M

### BERTH LENGTH:

300 M

### DEPTH ALONGSIDE:

14 M

## LOADING FACILITIES:

### NUMBER OF SHIPLOADERS:

One

### LOAD RATE:

1,000 TPH

### TRAVEL:

Fixed

### OUTREACH:

14 M



# **SOUTH AFRICA - IRON ORE PORTS**

A map of South Africa with a green landmass and blue oceans. A red dot marks the location of Saldanha Bay on the west coast. The text 'Saldanha Bay' is written in black to the left of the dot.

**Saldanha Bay**



**Roy Davidson**

**Phone: +27 35 797 995 0**

**Email: [Roy.Davison@Wilhelmsen.com](mailto:Roy.Davison@Wilhelmsen.com)**

# SALDANHA BAY

## - PORT INFORMATION

### PORT DETAILS

<b>BRIEF PORT DESCRIPTION:</b>	The port was originally constructed during the early 1970's to facilitate the export of iron ore, bulk crude oil whereafter breakbulk terminals were subsequently added to the facilities in the port. Port facilities consist of a 990 m long jetty with two iron ore berths and one crude oil berth joined to the north shore of the harbour by a 3100 m causeway.
<b>TERMINAL:</b>	Bulk Terminal - Iron Ore
<b>NUMBER OF BERTHS:</b>	2 (OBS - Ore Berth Saldanha / OBL - Ore Berth Langebaan)

### PORT INFORMATION

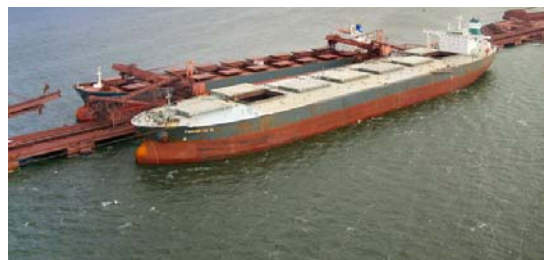
<b>POSITION:</b>	Latitude 33 ° 02' S, Longitude 17 ° 58' E Salinity = 1 025
<b>LOCATION:</b>	South Africa - approx. 60 nautical miles northwest of Cape Town
<b>SHIPPER(S):</b>	Kumba Iron Ore
<b>TIDE RANGE:</b>	1.5 m

### MAX. SHIP DIMENSIONS

<b>LOA:</b>	N/a
<b>DRAFT:</b>	21.25 m
<b>AIR DRAFT (at Datum):</b>	20 m
<b>MAX BEAM:</b>	58 m
<b>BERTH LENGTH:</b>	630 m
<b>DEPTH ALONGSIDE:</b>	23m below CD

### LOADING FACILITIES:

<b>NUMBER OF SHIPLOADERS:</b>	Two (currently only utilizing 1 ship loader at a time)
<b>LOAD RATE:</b>	5'000 mt - 8'000 mt per hour
<b>TRAVEL:</b>	Entire Length Of Berth
<b>OUTREACH:</b>	OBS 38.8 Max / OBL 42.8 Max



# **SOUTH AMERICA - IRON ORE PORTS**



**Armando Sampaio**

**Phone: +55 13 210 118 22**

**Email: [Armando.Sampaio@Wilhelmsen.com](mailto:Armando.Sampaio@Wilhelmsen.com)**

# FSTS BOCA GRANDE

## - PORT INFORMATION

### PORT DETAILS

<b>BRIEF PORT DESCRIPTION:</b>	In operation since 1989, the FSTS (Floating Storage and Transfer Station) Boca Grande is the world's largest self unloading, self loading transfer station. This facility is a 227,000 DWT floating terminal which is supplied by two 84,000 DWT shuttle vessels.
<b>TERMINAL:</b>	FSTS Boca Grande
<b>NUMBER OF BERTHS:</b>	One

### PORT INFORMATION

<b>POSITION:</b>	LAT: 09° 56' S, LONG: 61 ° 34' E
<b>LOCATION:</b>	Located in Venezuelan territorial waters, in serpent mouth between Trinidad and the delta of the Orinoco River.
<b>SHIPPER(S):</b>	Bulkguasare Ltd.
<b>TIDE RANGE:</b>	0.5M

### MAX. SHIP DIMENSIONS

<b>LOA:</b>	279 M
<b>DRAFT:</b>	Not Limited
<b>AIR DRAFT (at Datum):</b>	17 M
<b>BERTH LENGTH:</b>	320 M
<b>DEPTH ALONGSIDE:</b>	30.4 M

### LOADING FACILITIES:

<b>NUMBER OF SHIPLOADERS:</b>	One
<b>LOAD RATE:</b>	4,500 TPH
<b>TRAVEL:</b>	Fixed
<b>OUTREACH:</b>	37 M



# GUAIBA ISLAND

## - PORT INFORMATION

### PORT DETAILS

<b>BRIEF PORT DESCRIPTION:</b>	Guaiba Island (Mangaratiba) hosts a terminal suitable for loading iron ore which is capable of accepting vessels including large capesize ships due to its unrestricted LOA and deep draft.
<b>TERMINAL:</b>	North & South Pier
<b>NUMBER OF BERTHS:</b>	2

### PORT INFORMATION

<b>POSITION:</b>	LAT: 23° 00' S, LONG: 44 ° 02' E
<b>LOCATION:</b>	Sepetiba Bay, located South of the port of Rio de Janeiro
<b>SHIPPER(S):</b>	Mineracoes Brasileiras Reunidas
<b>TIDE RANGE:</b>	1 M - 1.6 M

### MAX. SHIP DIMENSIONS

<b>LOA:</b>	N/A
<b>DRAFT:</b>	20.4 M
<b>AIR DRAFT (at Datum):</b>	19 M
<b>BERTH LENGTH:</b>	380 M / 300 M
<b>DEPTH ALONGSIDE:</b>	22.5 M

### LOADING FACILITIES:

<b>NUMBER OF SHIPLOADERS:</b>	Two
<b>LOAD RATE:</b>	5,000 MTPH
<b>TRAVEL:</b>	330 M / 270 M
<b>OUTREACH:</b>	31 M



# PONTA DA MADEIRA - PORT INFORMATION

## PORT DETAILS

### BRIEF PORT DESCRIPTION:

Ponta da Madeira is the home of one of the world's deepest draft terminals. The world's largest bulk carriers regularly call at this port, often bound for Rotterdam, which is able to accommodate vessels of an equally deep draft.

**TERMINAL:** Pier 1 & 2

**NUMBER OF BERTHS:** Two

## PORT INFORMATION

**POSITION:** LAT: 22° 34' S, LONG: 44 ° 23' E

**LOCATION:** Located about 8 km south from the city of São Luis at São Marcos Bay

**SHIPPER(S):** Cia. Vale do Rio Doce

**TIDE RANGE:** 5.4 M - 7 M

## MAX. SHIP DIMENSIONS

**LOA:** 345 M / 280 M

**DRAFT:** 25 M

**AIR DRAFT (at Datum):** 22.4 M / 18 M

**BERTH LENGTH:** 685 M

**DEPTH ALONGSIDE:** 25 M

## LOADING FACILITIES:

**NUMBER OF SHIPLOADERS:** Two

**LOAD RATE:** 16,000 TPH / 8,000 TPH

**TRAVEL:** 600 M

**OUTREACH:** 46.3 M / 31.5 M



# PONTA UBU

## - PORT INFORMATION

### PORT DETAILS

**BRIEF PORT DESCRIPTION:** The iron ore loading terminal at Ponta Ubu is one of Brazil's largest. The port is the export facility for Samarco's iron ore mine and pellet production plant. Ponta Ubu's advanced shiploaders enable very efficient loading operations.

**TERMINAL:** Eastside & Westside Pier

**NUMBER OF BERTHS:** 2

### PORT INFORMATION

**POSITION:** LAT: 22° 56' S, LONG: 43 ° 50' E

**LOCATION:** SE Brazil, near port of Vitoria

**SHIPPER(S):** Samarco Mineracao

**TIDE RANGE:** 1 M - 1.6 M

### MAX. SHIP DIMENSIONS

**LOA:** 308 M / 240 M

**DRAFT:** 17 M / 13 M

**AIR DRAFT (at Datum):** 26 M / 13.5 M

**BERTH LENGTH:** 385 M / 350 M

**DEPTH ALONGSIDE:** 20 M / 16 M

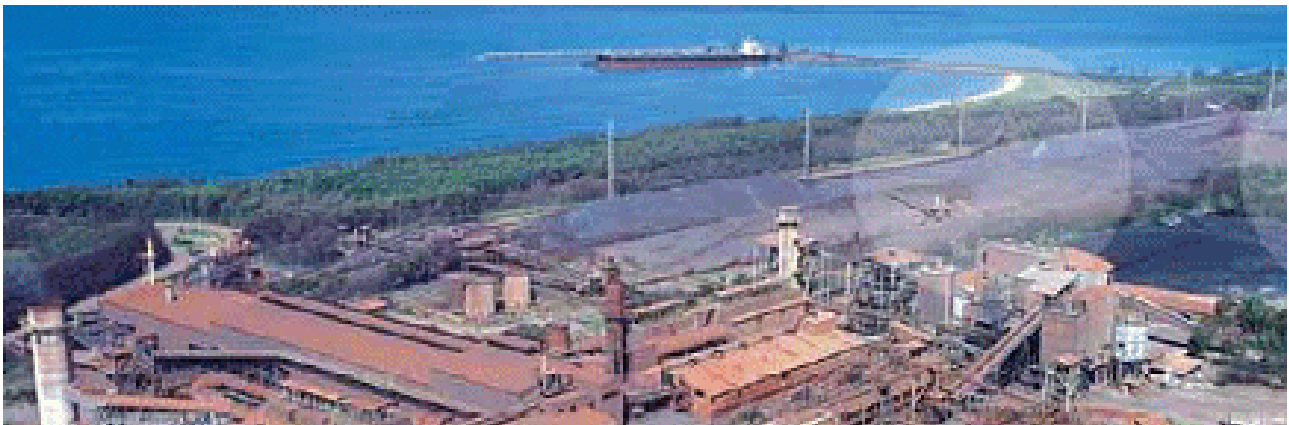
### LOADING FACILITIES:

**NUMBER OF SHIPLOADERS:** Two

**LOAD RATE:** 10,000 MTPH

**TRAVEL:** 314 M

**OUTREACH:** 28.5 M



# PUERTO ORDAZ

## - PORT INFORMATION

### PORT DETAILS

<b>BRIEF PORT DESCRIPTION:</b>	Puerto Ordaz is the hub of a thriving local iron, steel and aluminium industry. The port facility in this city houses two large iron ore export terminals.
<b>TERMINAL:</b>	Ferrominera Del Orinoco
<b>NUMBER OF BERTHS:</b>	One

### PORT INFORMATION

<b>POSITION:</b>	LAT: 08° 21' S, LONG: 62 ° 43' E
<b>LOCATION:</b>	Near the mouth of the Orinoco River in Venezuela
<b>SHIPPER(S):</b>	Ferrominera Del Orinoco
<b>TIDE RANGE:</b>	1M

### MAX. SHIP DIMENSIONS

<b>LOA:</b>	294.5 M
<b>DRAFT:</b>	11.2 M
<b>AIR DRAFT (at Datum):</b>	17 M
<b>BERTH LENGTH:</b>	585 M
<b>DEPTH ALONGSIDE:</b>	10 M

### LOADING FACILITIES:

<b>NUMBER OF SHIPLOADERS:</b>	One
<b>LOAD RATE:</b>	4,000 TPH
<b>TRAVEL:</b>	Fixed
<b>OUTREACH:</b>	19 M



# PUERTO ORDAZ

## - PORT INFORMATION

### PORT DETAILS

<b>BRIEF PORT DESCRIPTION:</b>	Puerto Ordaz is the hub of a thriving local iron, steel and aluminium industry. The port facility in this city houses two large iron ore export terminals.
<b>TERMINAL:</b>	Palua
<b>NUMBER OF BERTHS:</b>	One

### PORT INFORMATION

<b>POSITION:</b>	LAT: 08° 21' S, LONG: 62 ° 41' E
<b>LOCATION:</b>	Near the mouth of the Orinoco River in Venezuela
<b>SHIPPER(S):</b>	TFV
<b>TIDE RANGE:</b>	1M

### MAX. SHIP DIMENSIONS

<b>LOA:</b>	280 M
<b>DRAFT:</b>	11.2 M
<b>AIR DRAFT (at Datum):</b>	17 M
<b>BERTH LENGTH:</b>	585 M
<b>DEPTH ALONGSIDE:</b>	10 M

### LOADING FACILITIES:

<b>NUMBER OF SHIPLOADERS:</b>	One
<b>LOAD RATE:</b>	4,500 TPH
<b>TRAVEL:</b>	Fixed
<b>OUTREACH:</b>	30 M



# SEPETIBA

## - PORT INFORMATION

### PORT DETAILS

<b>BRIEF PORT DESCRIPTION:</b>	Sepetiba is located near the large Brazilian City of Rio De Janeiro. The area is home to a major port and industrial hinterland. This port is being constantly upgraded and developed due to its excellent natural characteristics.
<b>TERMINAL:</b>	Pier 401
<b>NUMBER OF BERTHS:</b>	Two

### PORT INFORMATION

<b>POSITION:</b>	LAT: 22° 56' S, LONG: 43 ° 50' E
<b>LOCATION:</b>	Sepetiba Bay, located South of the port of Rio de Janeiro
<b>SHIPPER(S):</b>	Ferteco Mineracao
<b>TIDE RANGE:</b>	1 M - 1.6 M

### MAX. SHIP DIMENSIONS

<b>LOA:</b>	N/A
<b>DRAFT:</b>	17.3 m
<b>AIR DRAFT (at Datum):</b>	17 M
<b>BERTH LENGTH:</b>	400 M
<b>DEPTH ALONGSIDE:</b>	19 M

### LOADING FACILITIES:

<b>NUMBER OF SHIPLOADERS:</b>	Two
<b>LOAD RATE:</b>	5,000 MTPH
<b>TRAVEL:</b>	360 M
<b>OUTREACH:</b>	32.5 M



# TUBARO

## - PORT INFORMATION

### PORT DETAILS

<b>BRIEF PORT DESCRIPTION:</b>	Tubarao is a rapidly developing iron ore port, which has been exporting iron ore to the world for over forty years. Recent global demand for iron ore has led to significant ongoing investment in this facility.
<b>TERMINAL:</b>	Pier 1 (North & South)
<b>NUMBER OF BERTHS:</b>	2

### PORT INFORMATION

<b>POSITION:</b>	LAT: 22° 56' S, LONG: 43 ° 50' E
<b>LOCATION:</b>	SE Brazil, within port of Vitoria limits.
<b>SHIPPER(S):</b>	CVRD (Vale)
<b>TIDE RANGE:</b>	1 M - 1.6 M

### MAX. SHIP DIMENSIONS

<b>LOA:</b>	285 M / 320 M
<b>DRAFT:</b>	17
<b>AIR DRAFT (at Datum):</b>	16.5 M
<b>BERTH LENGTH:</b>	430 M
<b>DEPTH ALONGSIDE:</b>	20 M

### LOADING FACILITIES:

<b>NUMBER OF SHIPLOADERS:</b>	Two (May Be Used for Double Loading)
<b>LOAD RATE:</b>	7,000 TPH
<b>TRAVEL:</b>	314 M
<b>OUTREACH:</b>	23.7 M



# TUBARO

## - PORT INFORMATION

### PORT DETAILS

<b>BRIEF PORT DESCRIPTION:</b>	Tubarao is a rapidly developing iron ore port, which has been exporting iron ore to the world for over forty years. Recent global demand for iron ore has led to significant ongoing investment in this facility.
<b>TERMINAL:</b>	Pier 2
<b>NUMBER OF BERTHS:</b>	2

### PORT INFORMATION

<b>POSITION:</b>	LAT: 22° 56' S, LONG: 43 ° 50' E
<b>LOCATION:</b>	SE Brazil, within port of Vitoria limits.
<b>SHIPPER(S):</b>	CVRD (Vale)
<b>TIDE RANGE:</b>	1 M - 1.6 M

### MAX. SHIP DIMENSIONS

<b>LOA:</b>	350 M
<b>DRAFT:</b>	20 M
<b>AIR DRAFT (at Datum):</b>	26 M
<b>BERTH LENGTH:</b>	430 M
<b>DEPTH ALONGSIDE:</b>	24 M

### LOADING FACILITIES:

<b>NUMBER OF SHIPLOADERS:</b>	Two
<b>LOAD RATE:</b>	16,000 TPH
<b>TRAVEL:</b>	314 M
<b>OUTREACH:</b>	28.5 M

