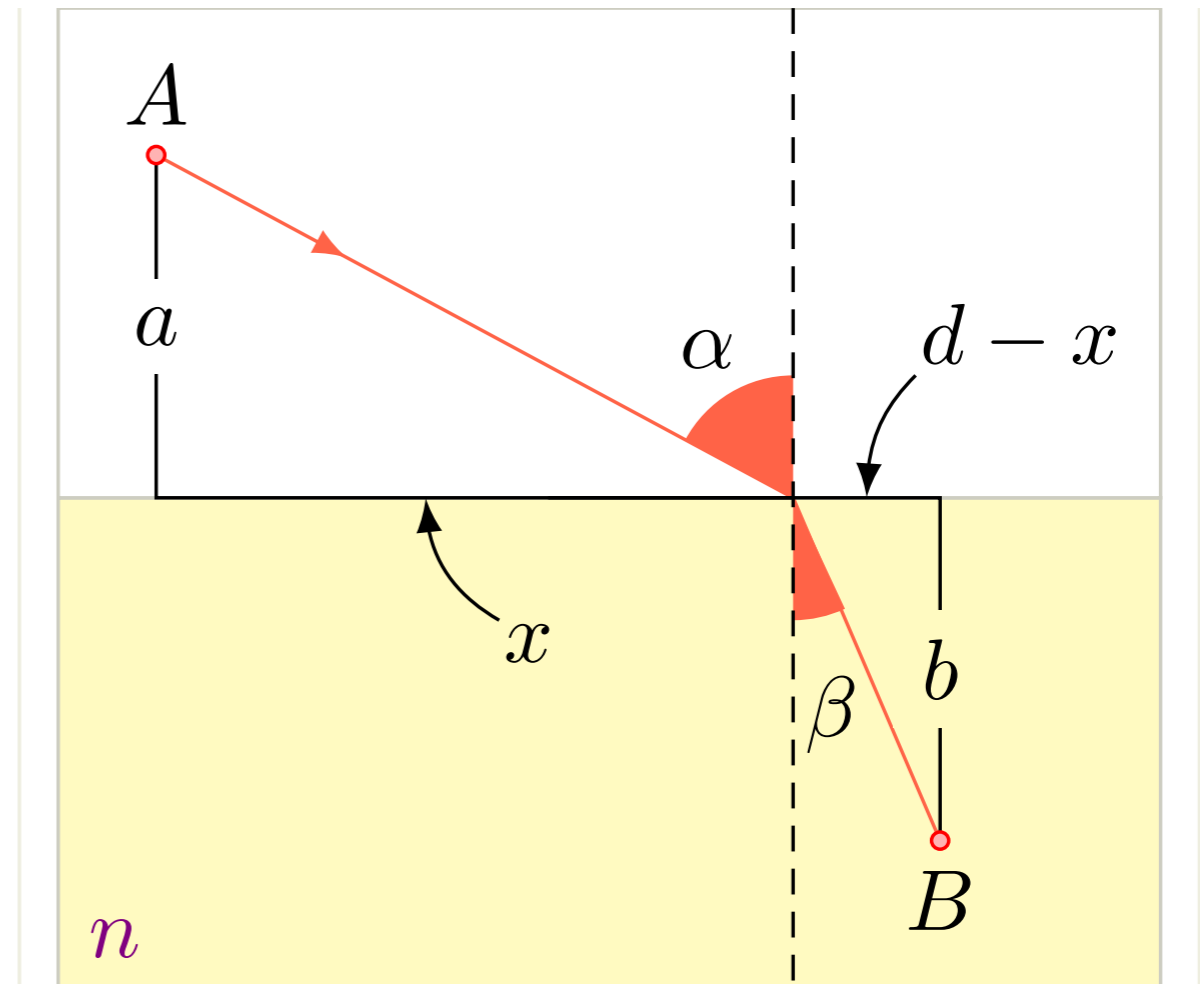


# Física IV

26 de outubro 2020  
Ótica geométrica

# Lei da refração

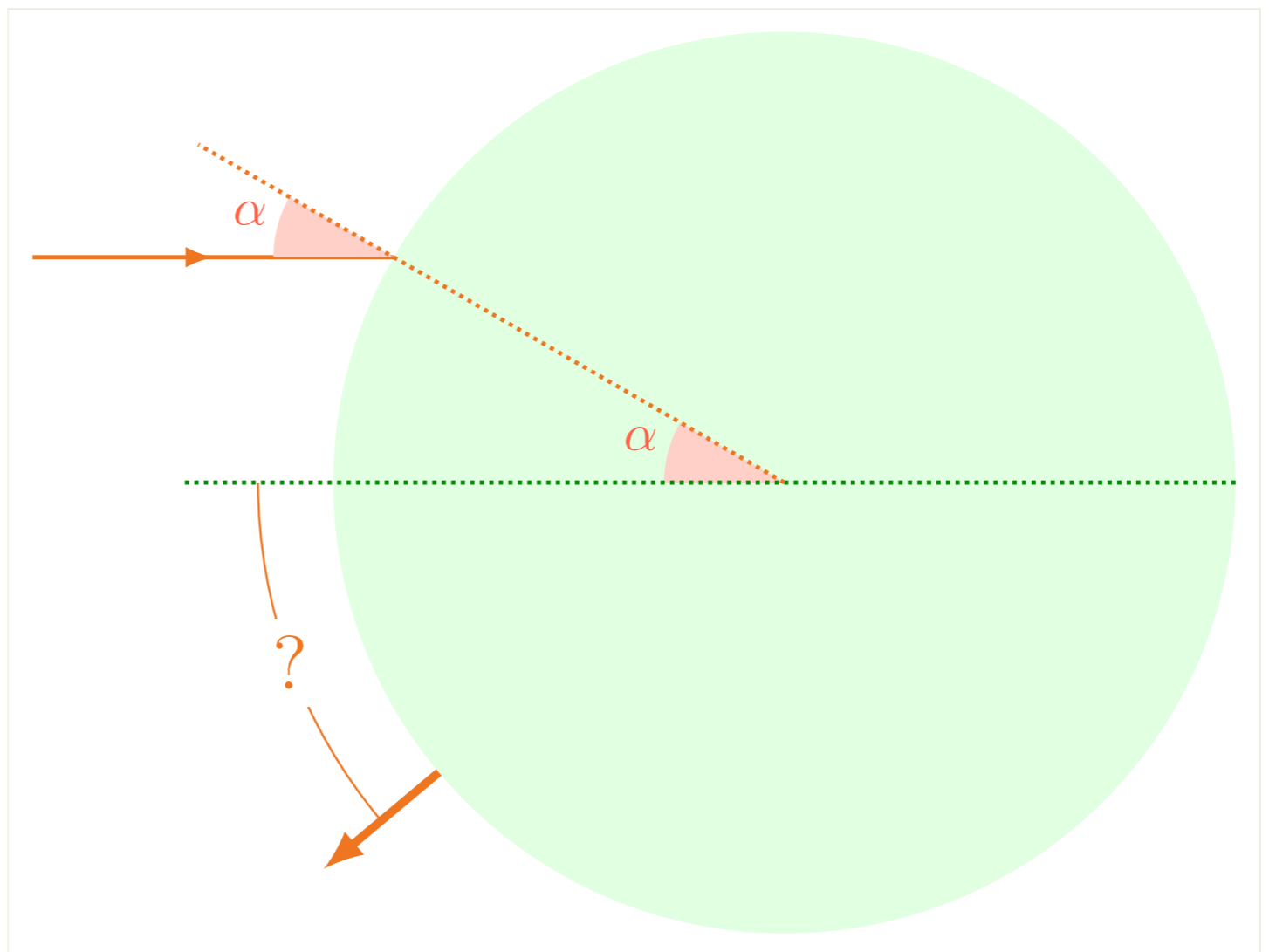
$$\sin \alpha = n \sin \beta$$



Pratique o que aprendeu

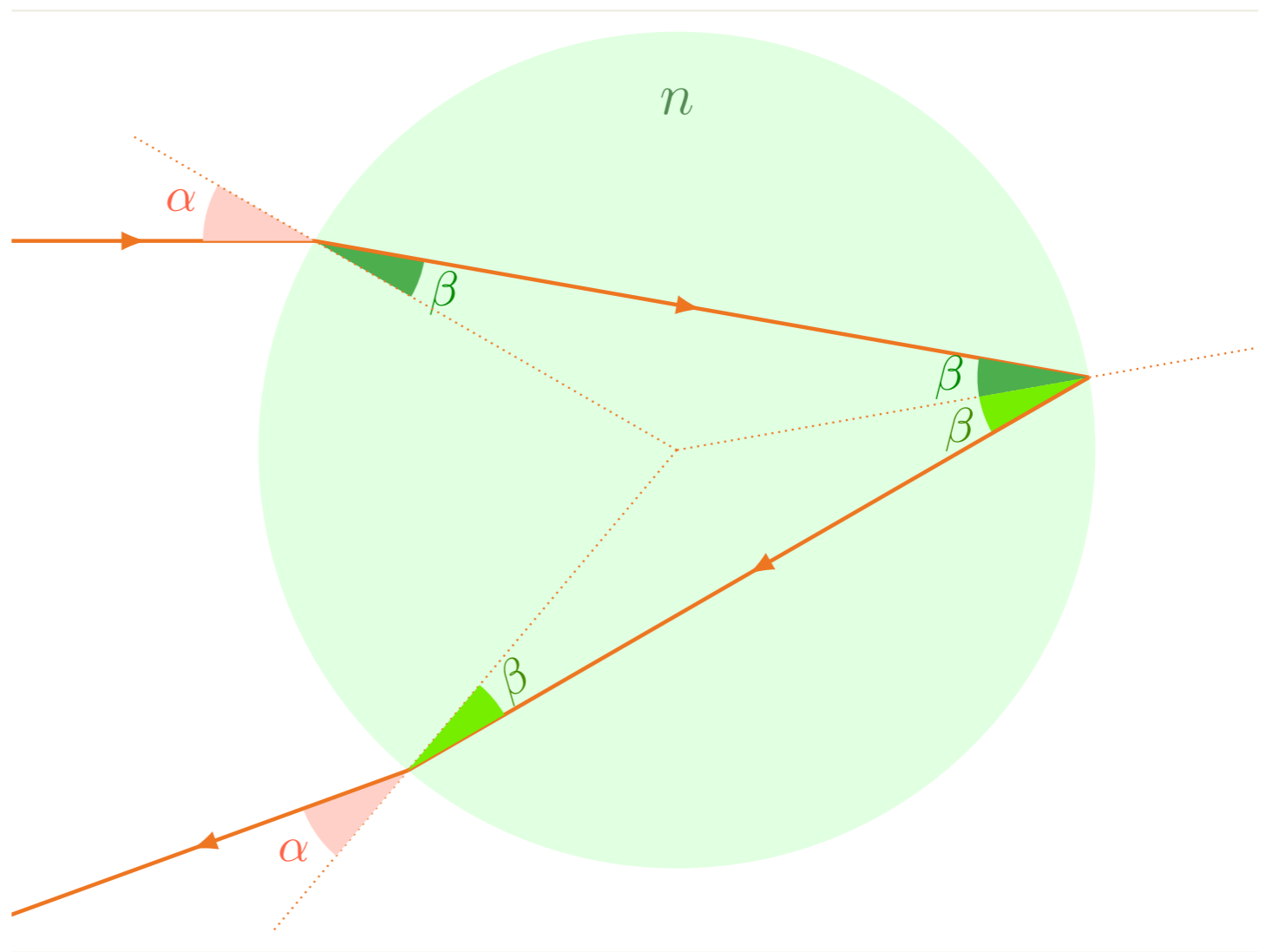
$$\sin \alpha = n \sin \beta$$

Desvio?



$$\sin \alpha = n \sin \beta$$

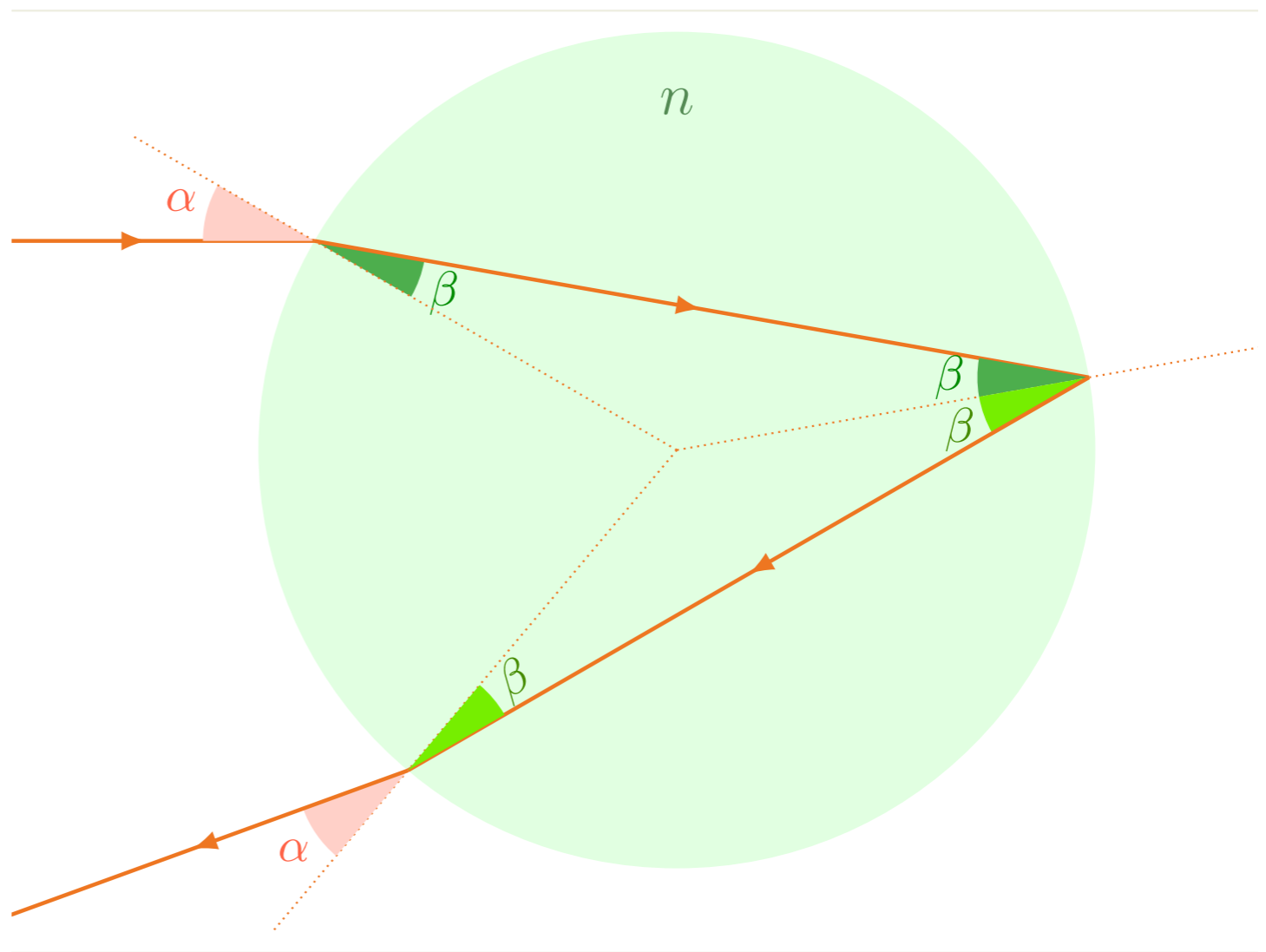
Pratique o que aprendeu



Pratique o que aprendeu

$$\sin \alpha = n \sin \beta$$

Desvio?

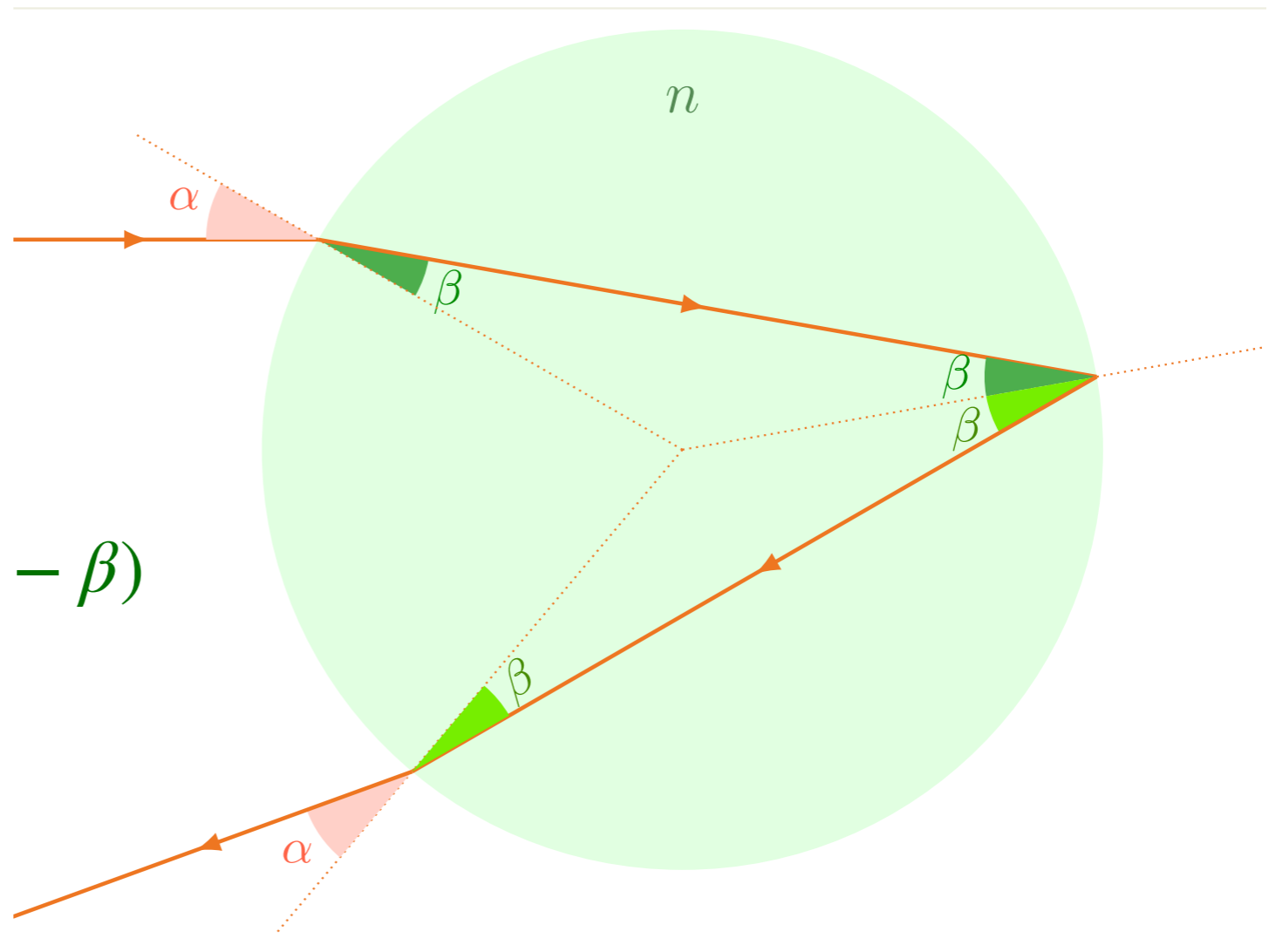


Pratique o que aprendeu

$$\sin \alpha = n \sin \beta$$

Desvio?

$$\delta = (\alpha - \beta) + (\pi - 2\beta) + (\alpha - \beta)$$



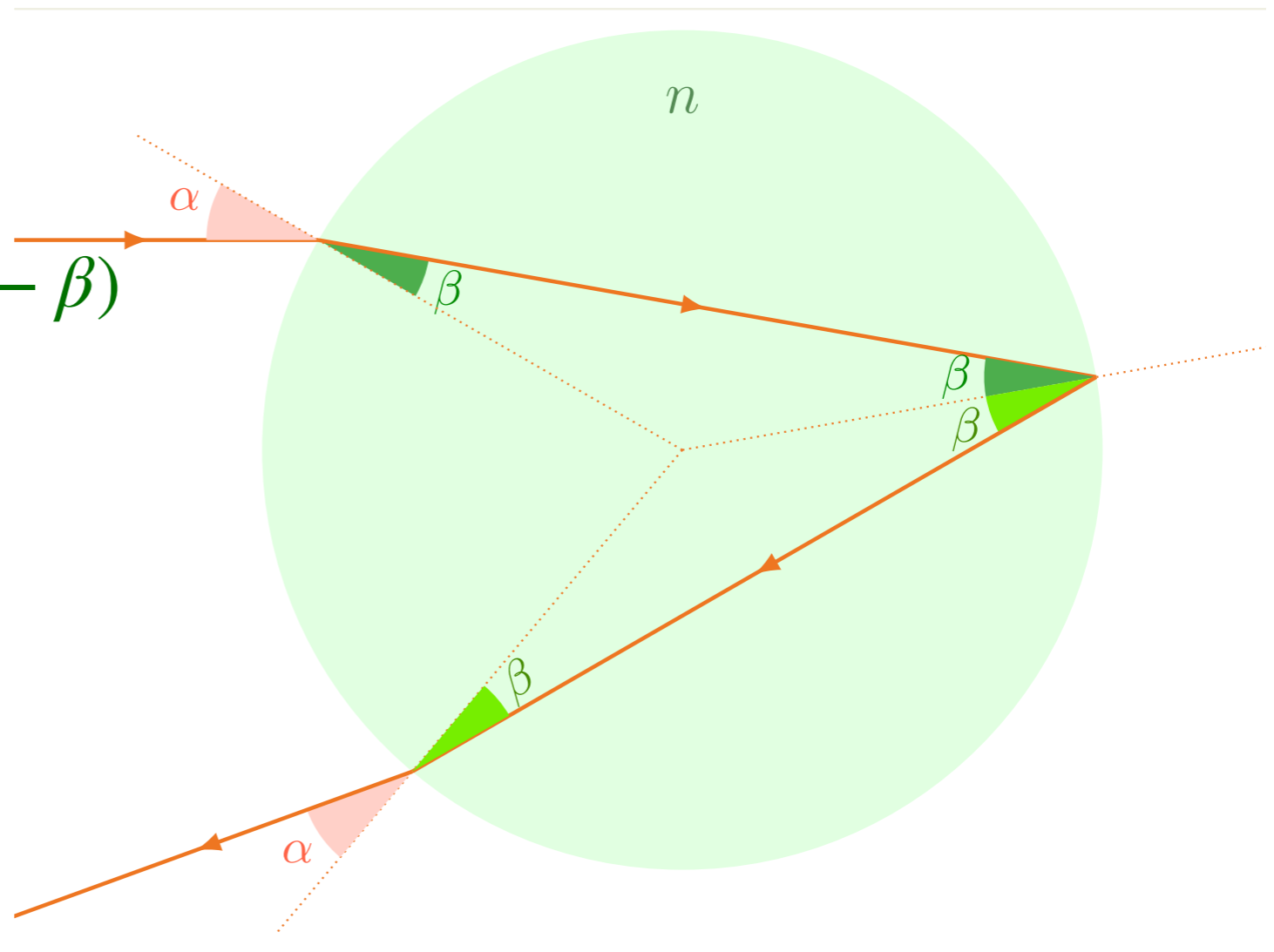
# Pratique o que aprendeu

$$\sin \alpha = n \sin \beta$$

Desvio?

$$\delta = (\alpha - \beta) + (\pi - 2\beta) + (\alpha - \beta)$$

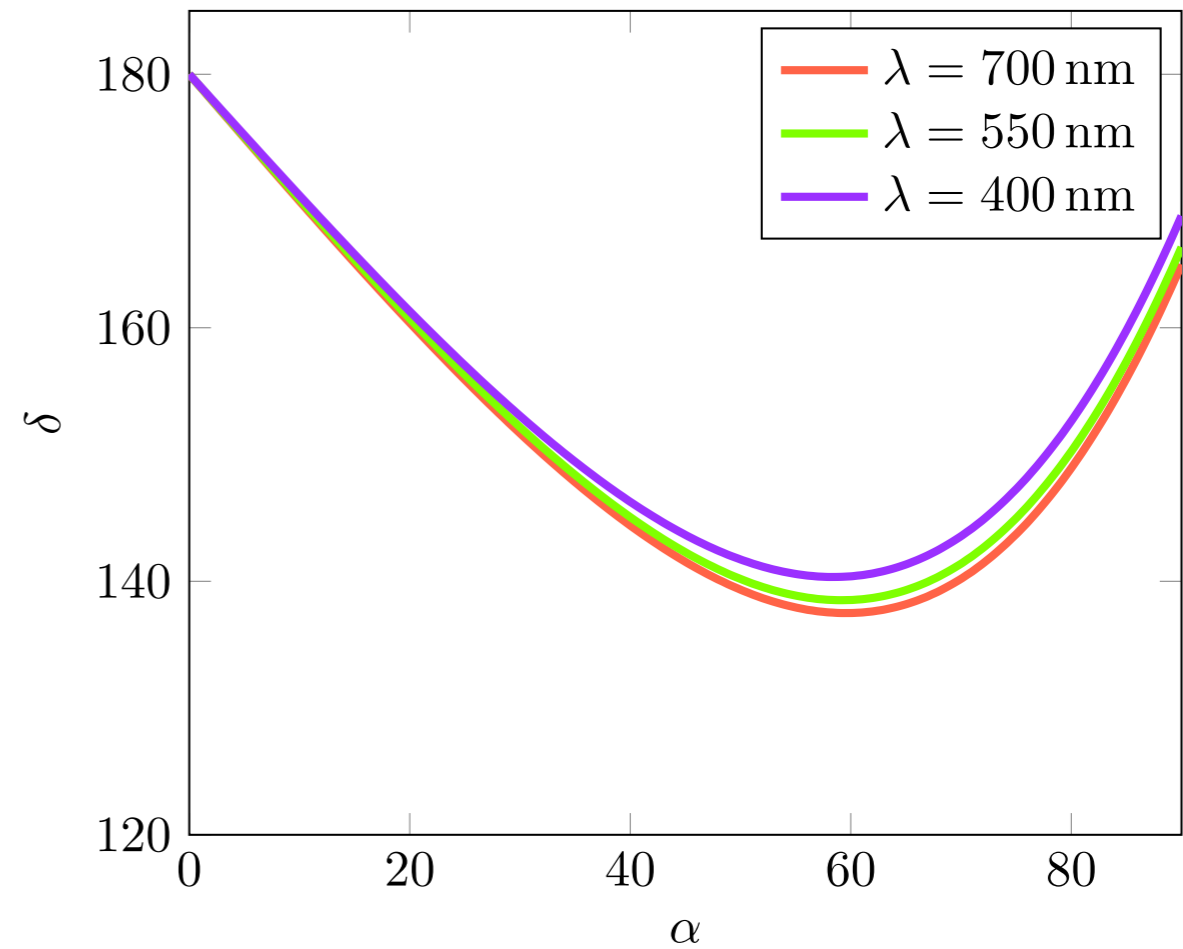
$$\delta = \pi + 2\alpha - 4\beta$$



# Pratique o que aprendeu

$$\sin \alpha = n \sin \beta$$

$$\delta = \pi + 2\alpha - 4\beta$$





Pratique o que aprendeu

