



# Histologia das Mucosas – Aspectos Gerais

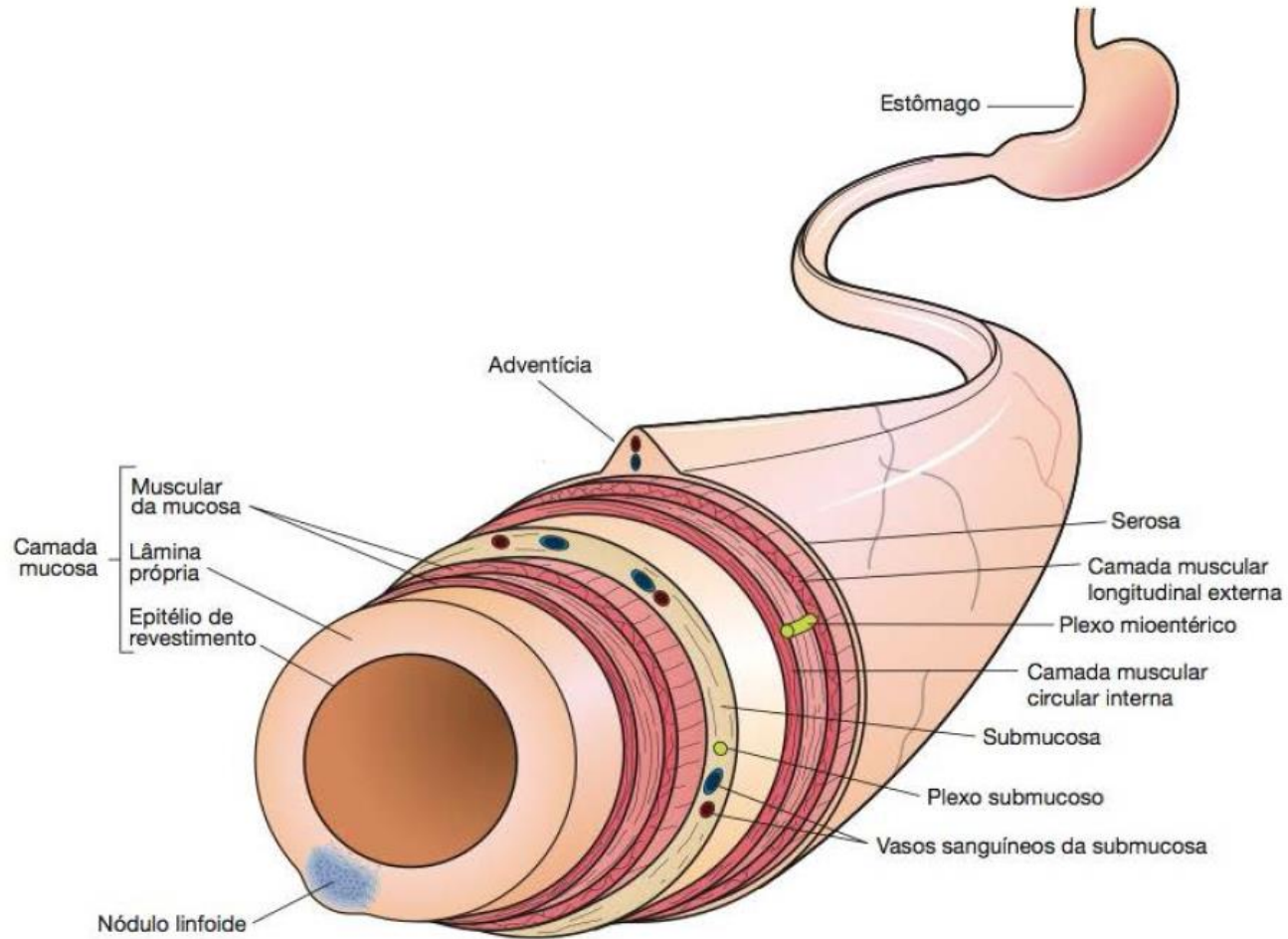
Prof. Dr. Luiz Fernando Ferraz da Silva

Faculdade de Medicina da Universidade de São Paulo – Departamento de Patologia  
Faculdade de Odontologia de Bauru – Curso de Medicina

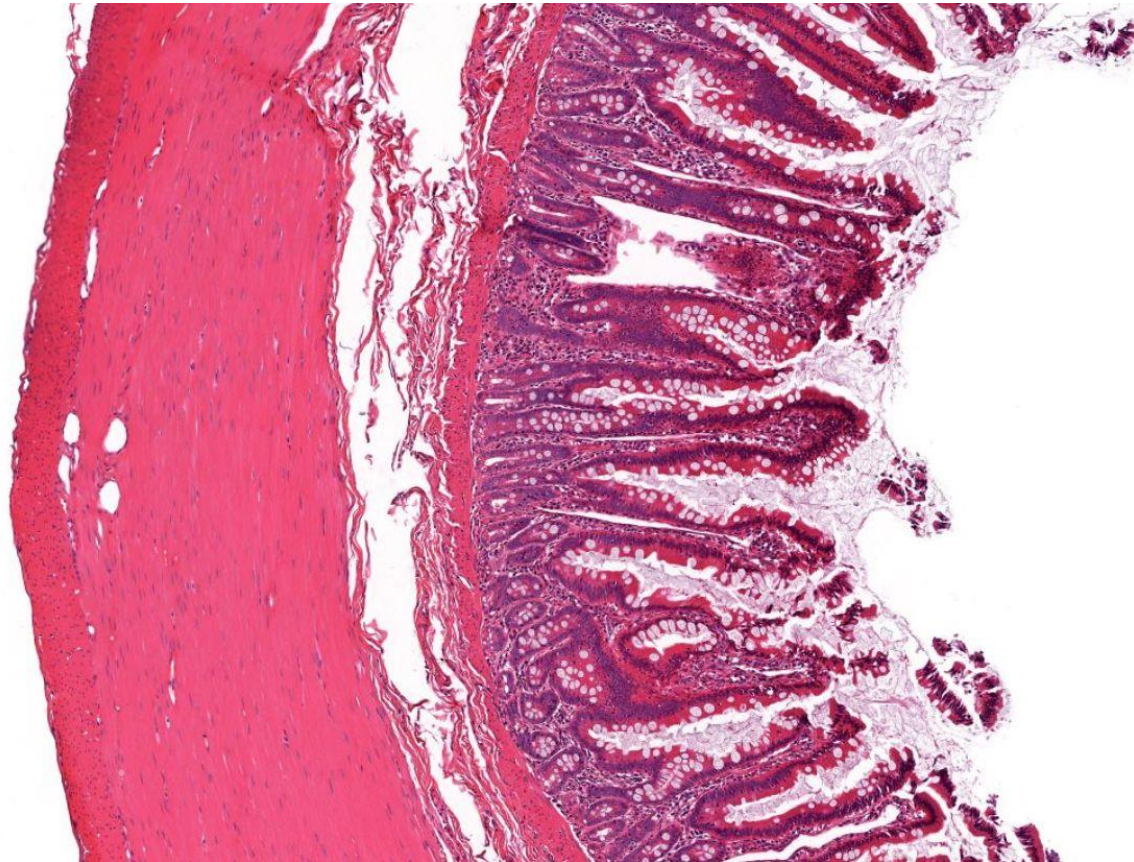


burns@usp.br

# Tubo digestivo

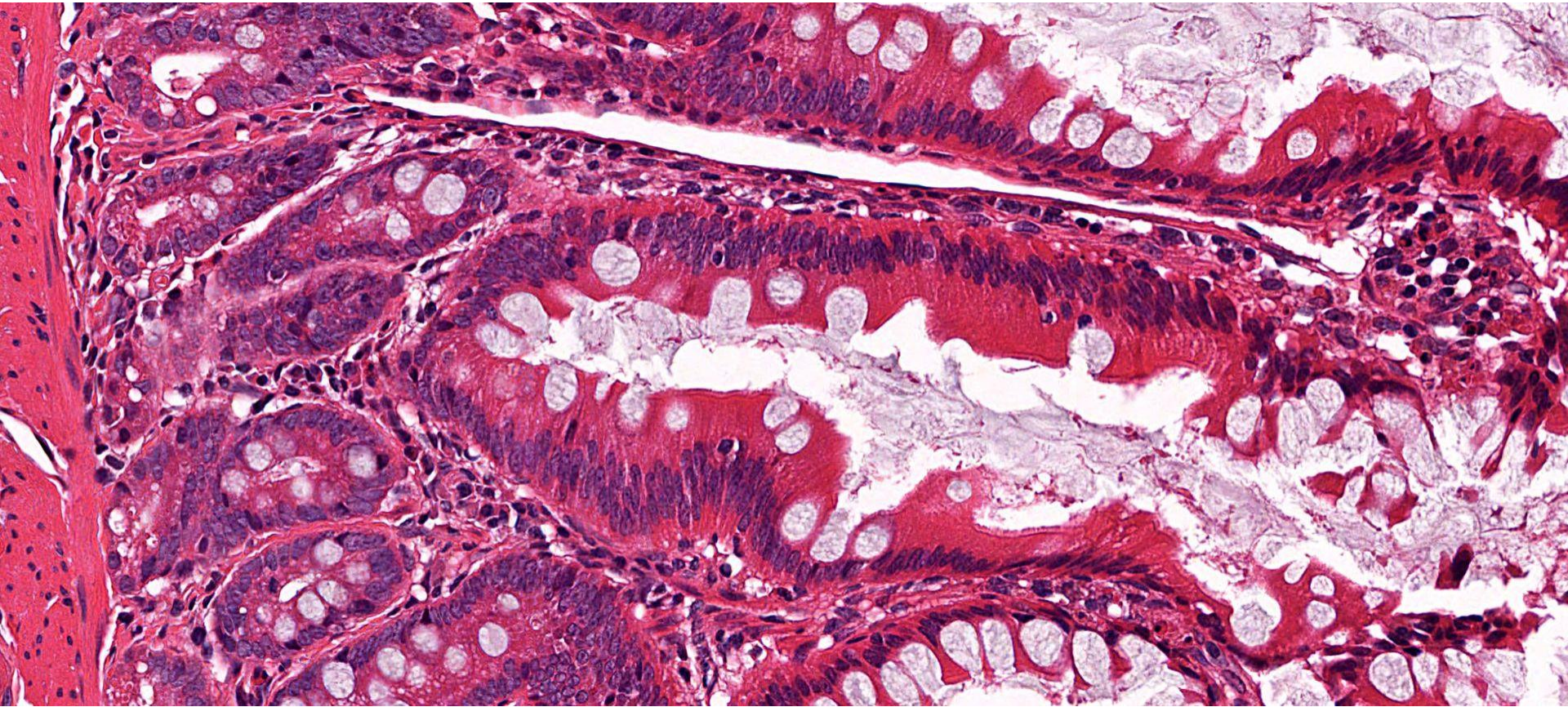


# Tube digestivo



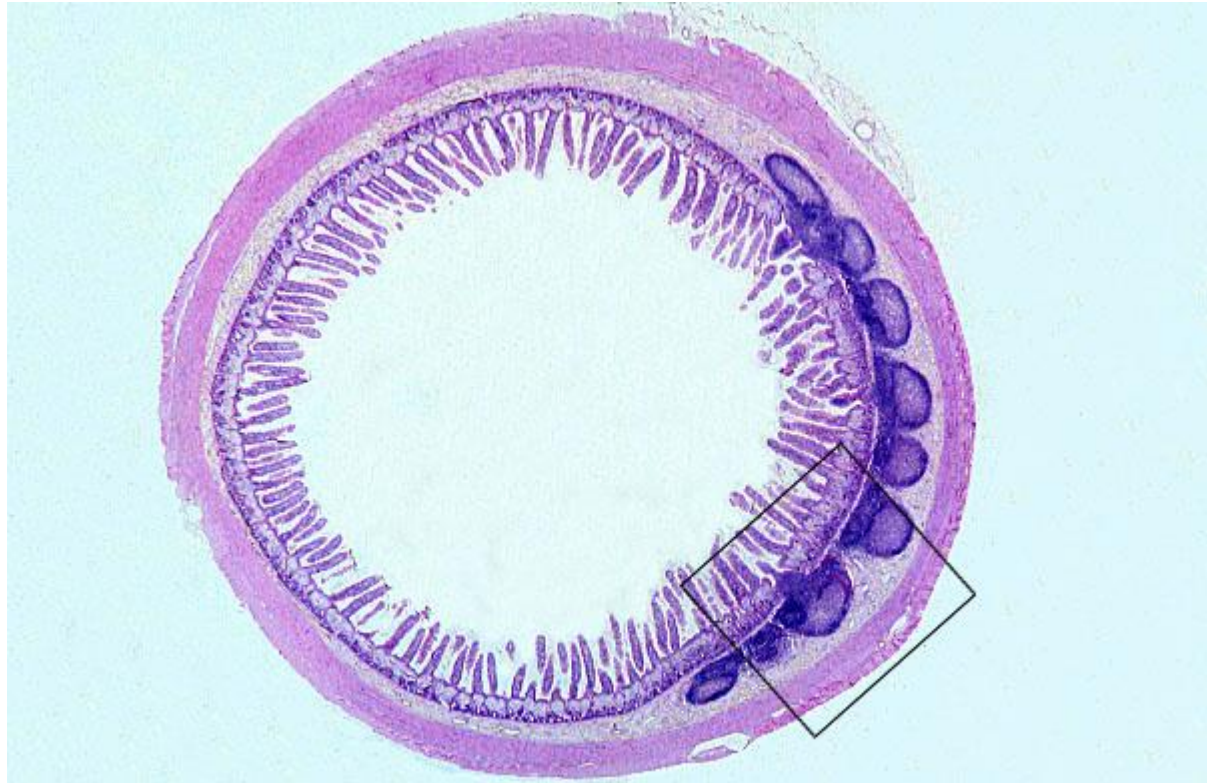


# Tubeo digestivo

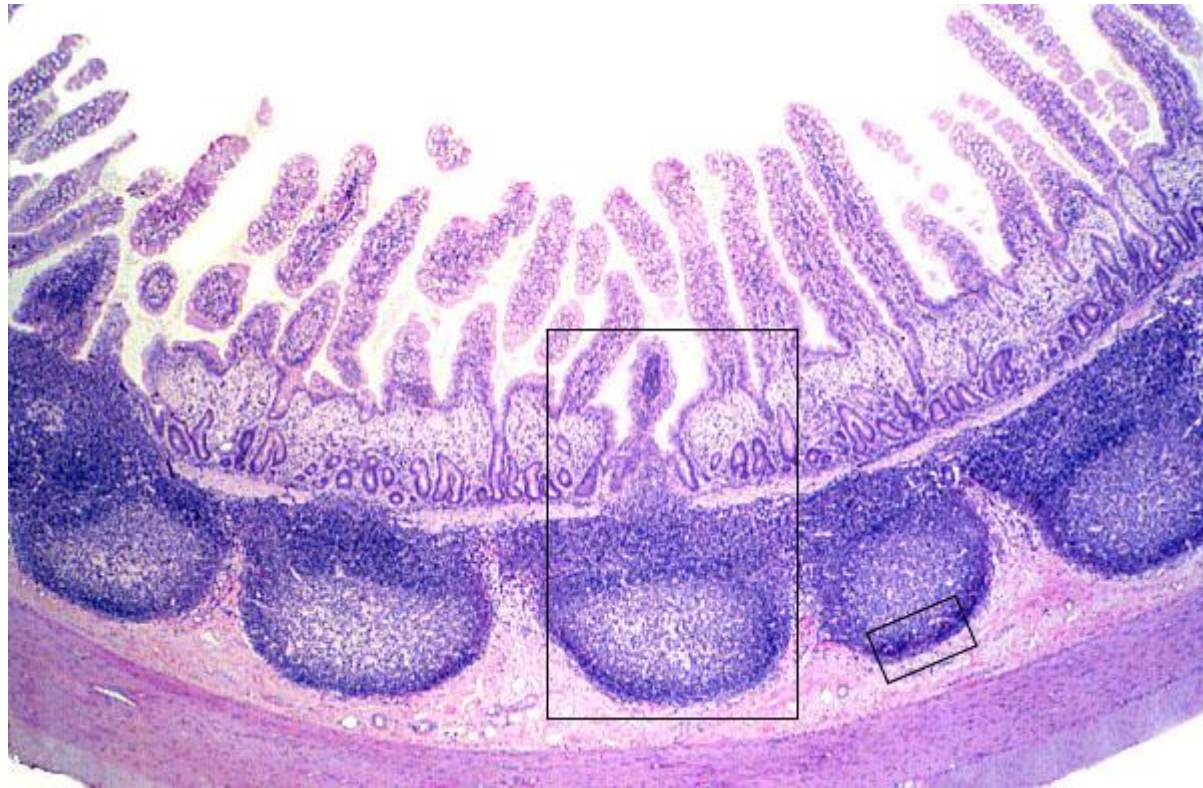




# Tubeo digestivo

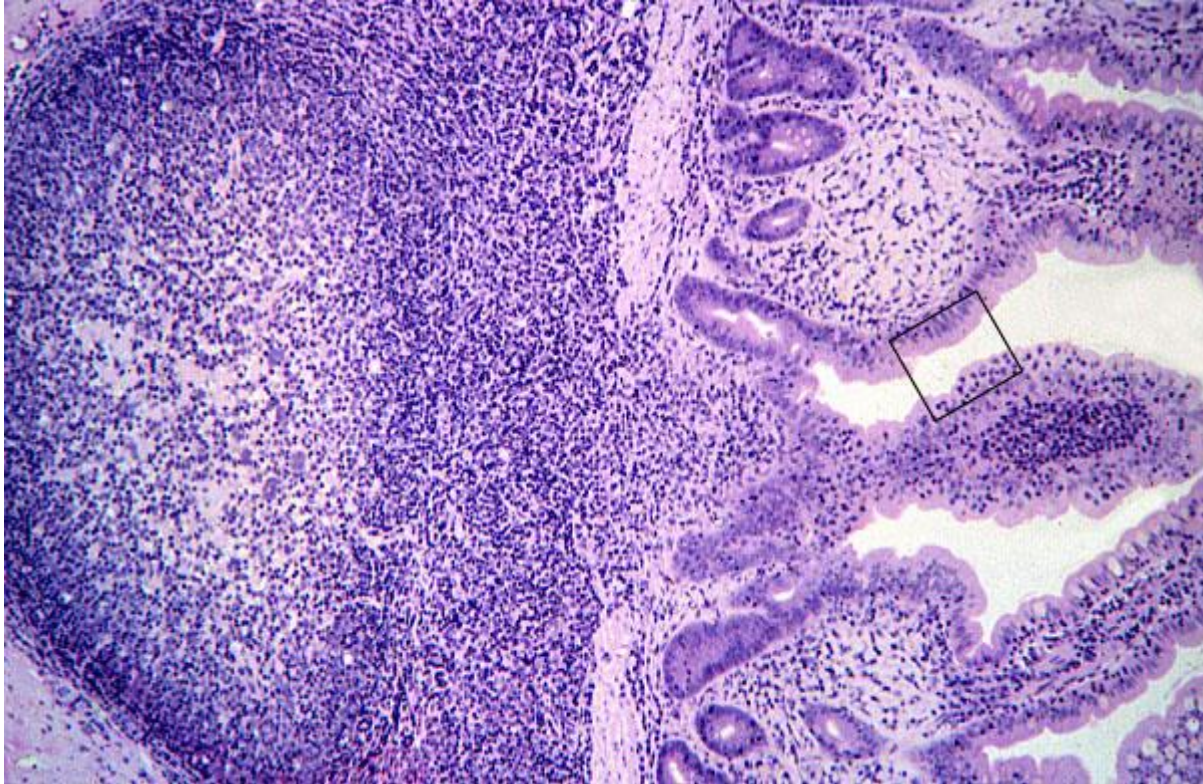


# Tube digestivo



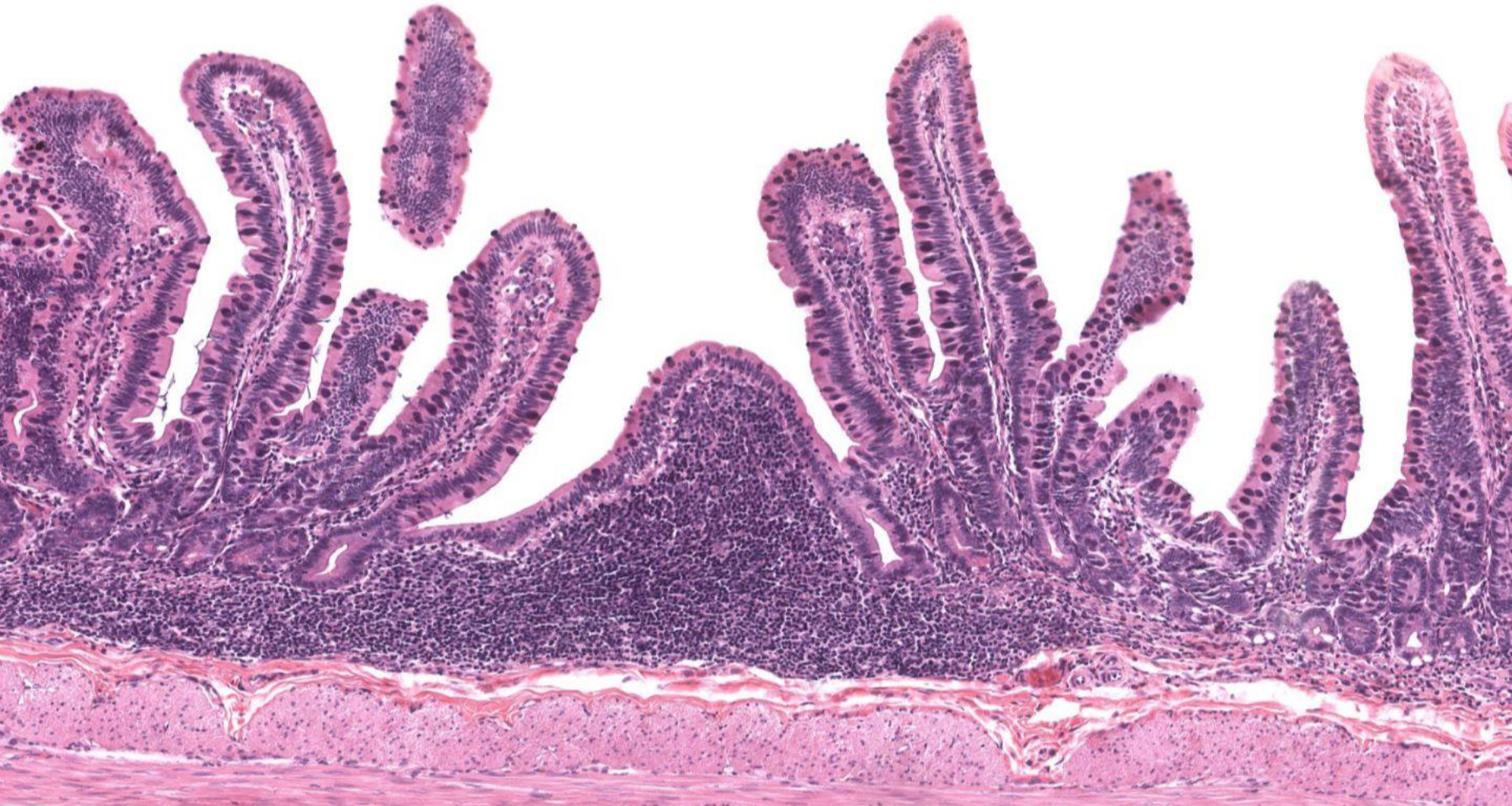


# Tube digestivo



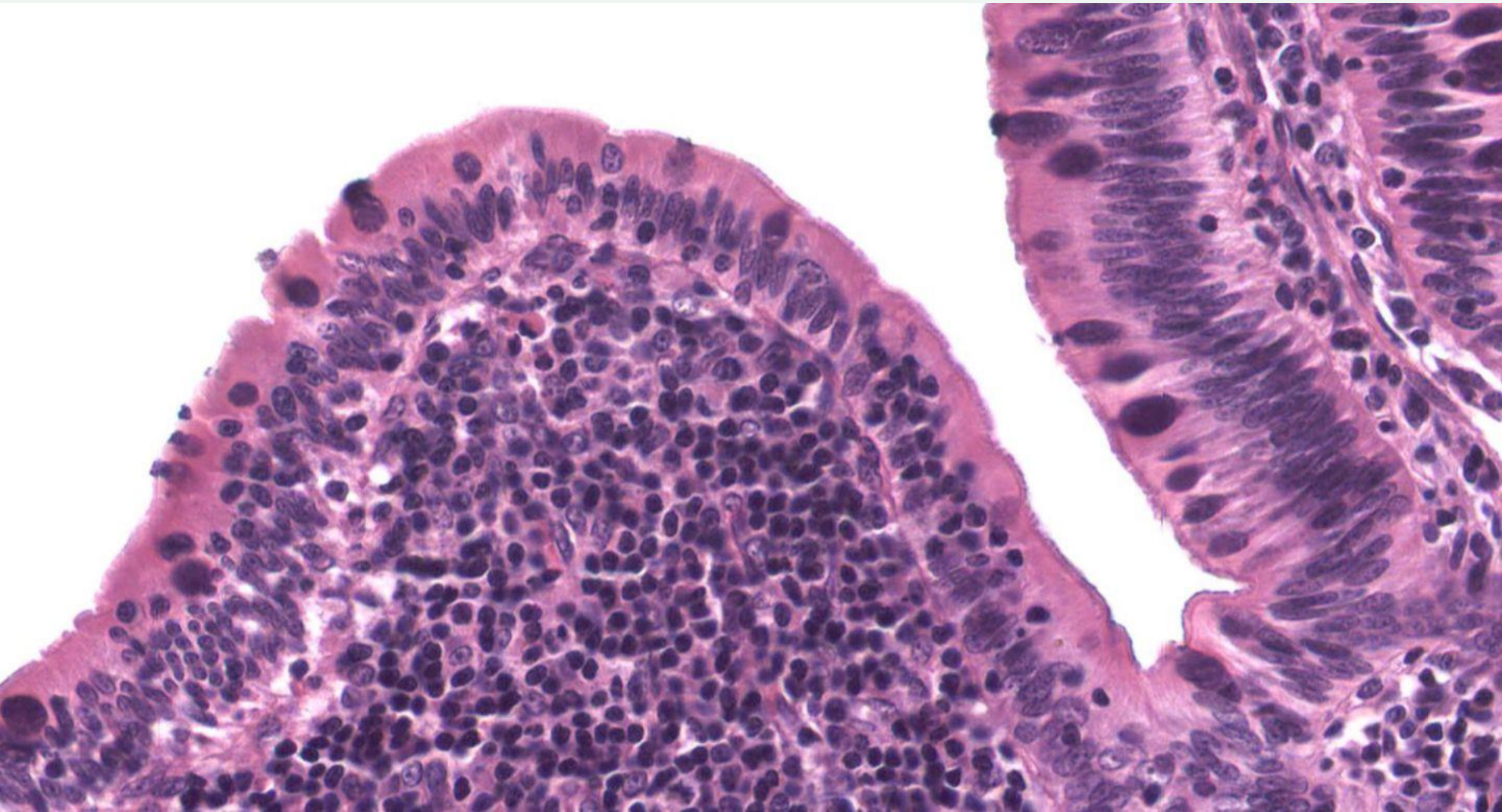


# Tube digestivo

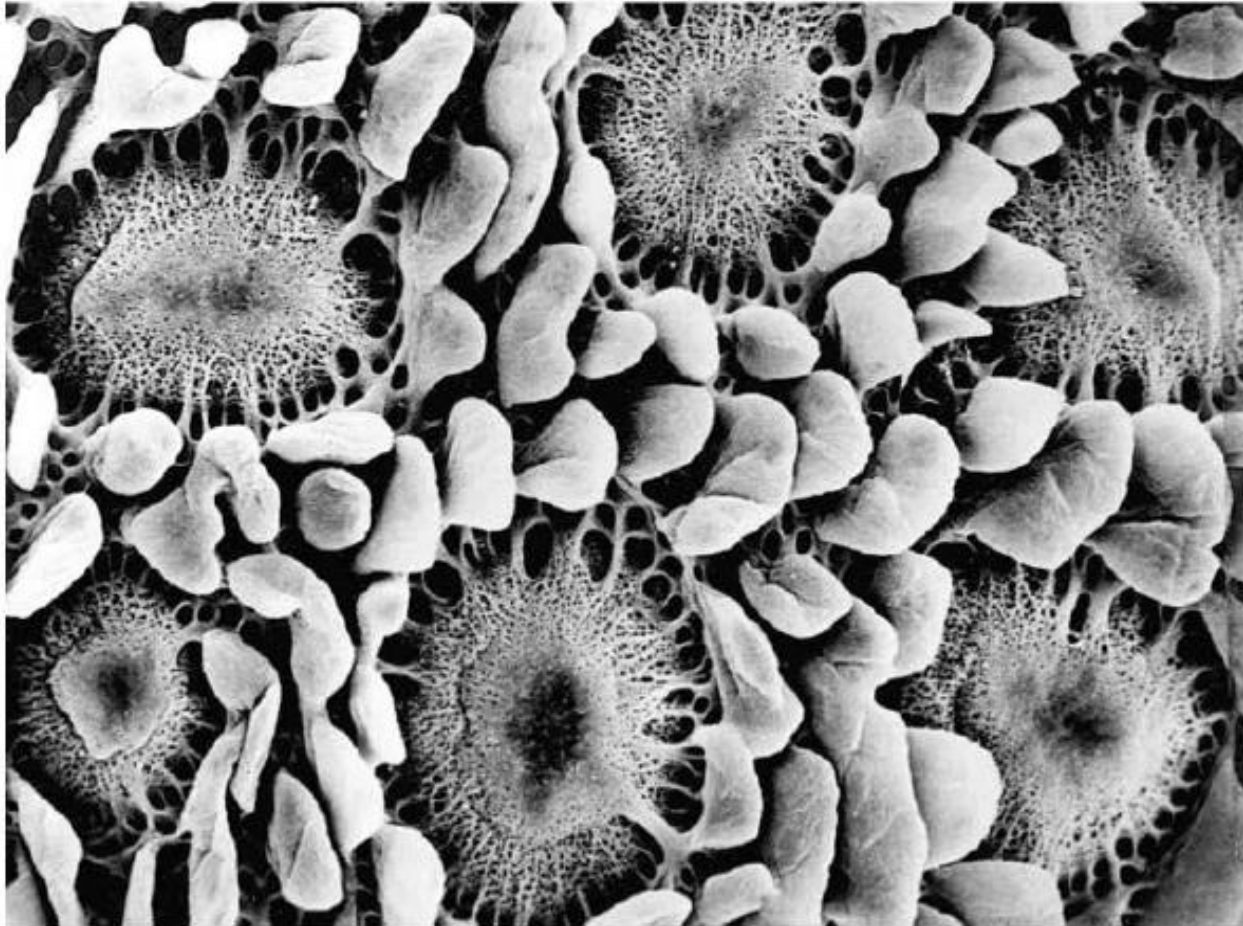




# Tubeo digestivo

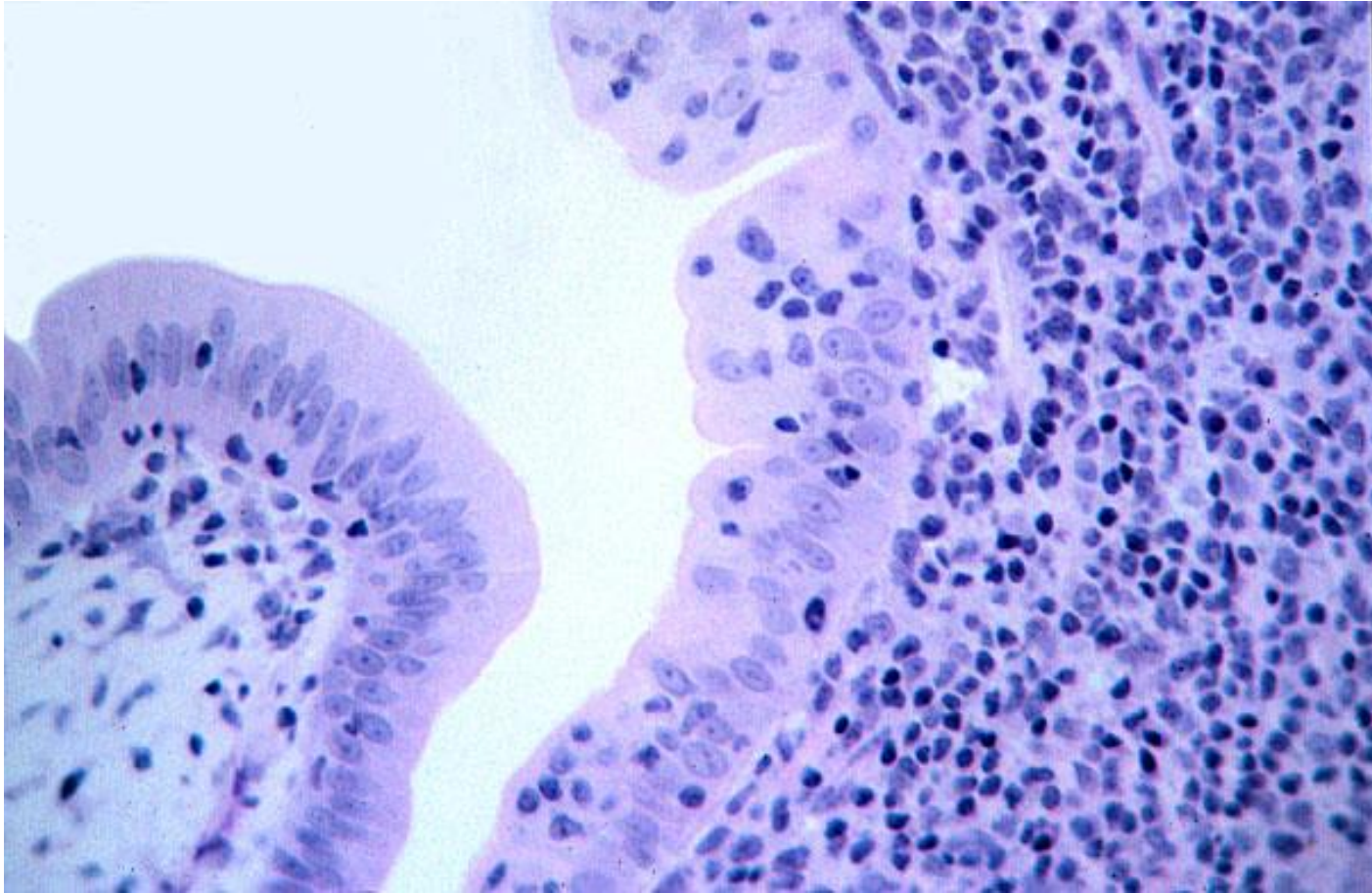


# Tubeo digestivo

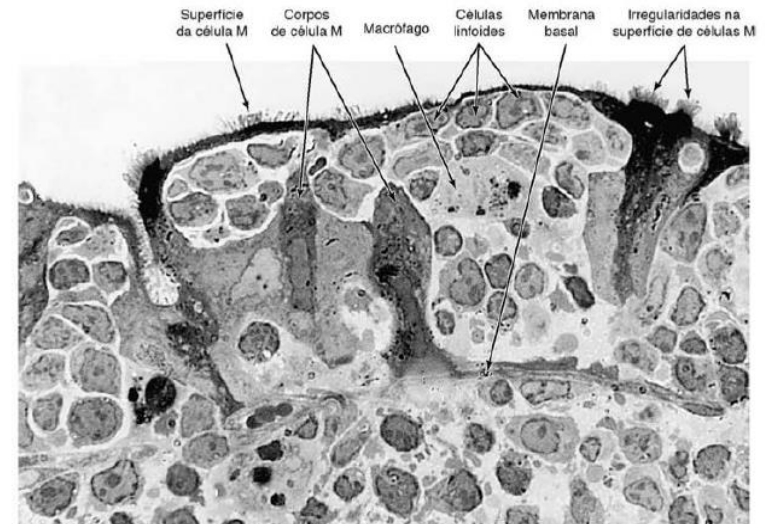
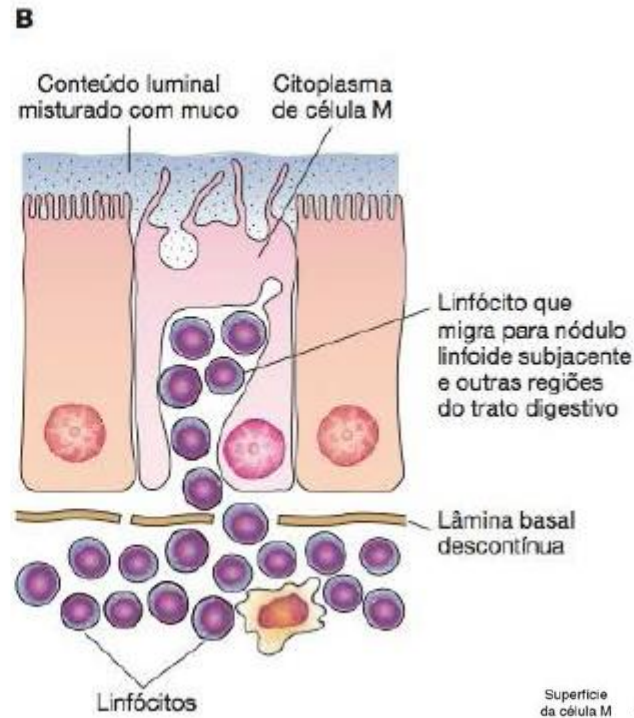
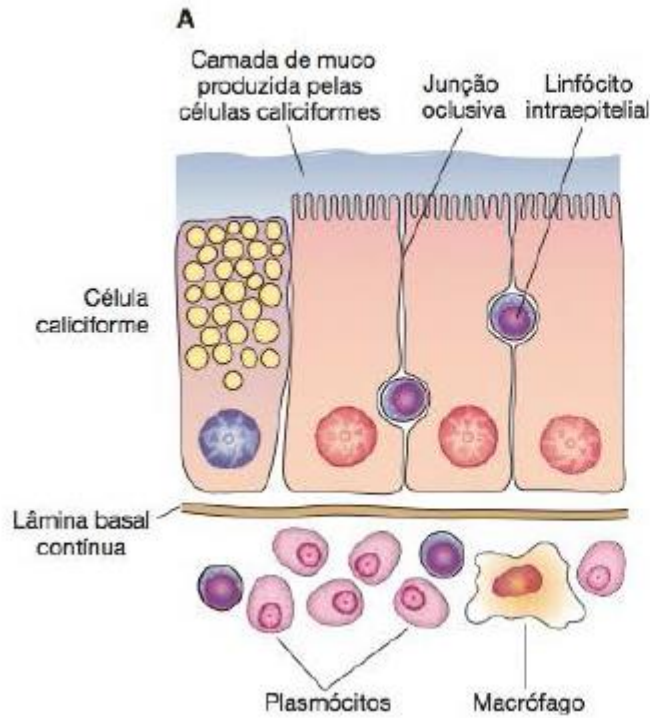




# Tubeo digestivo

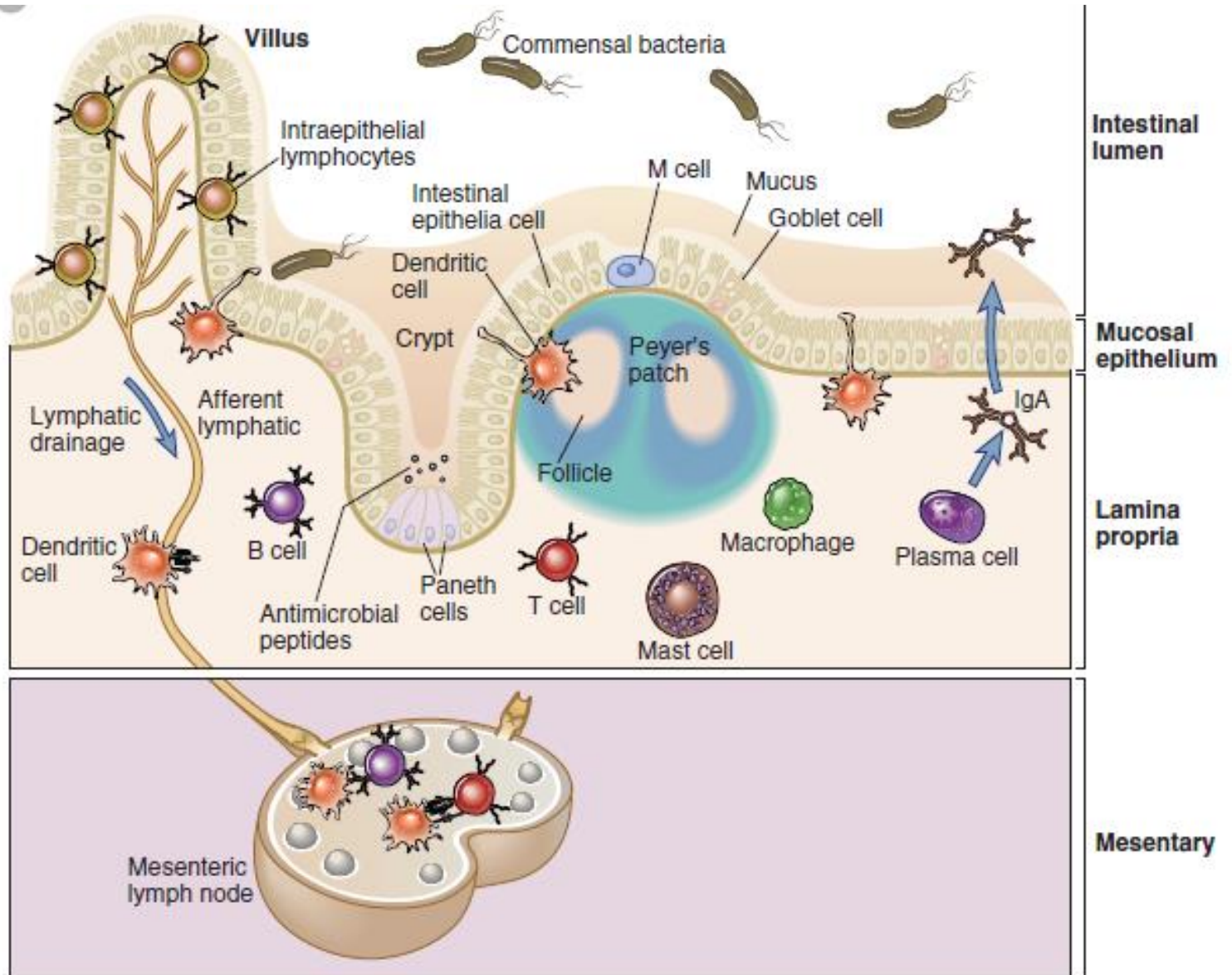


# Tubo digestivo





# Tubo digestivo

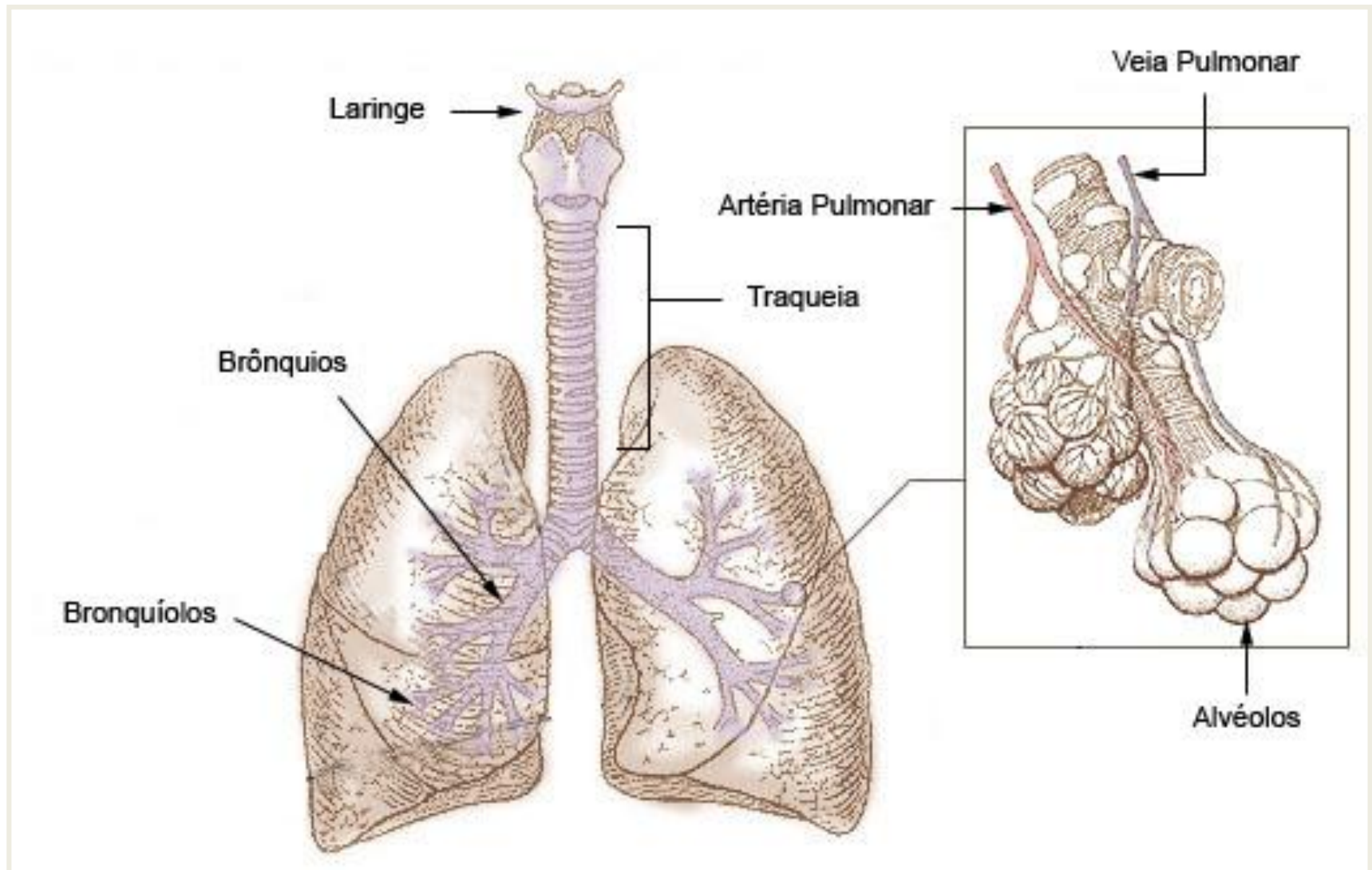


# Sistema Respiratório

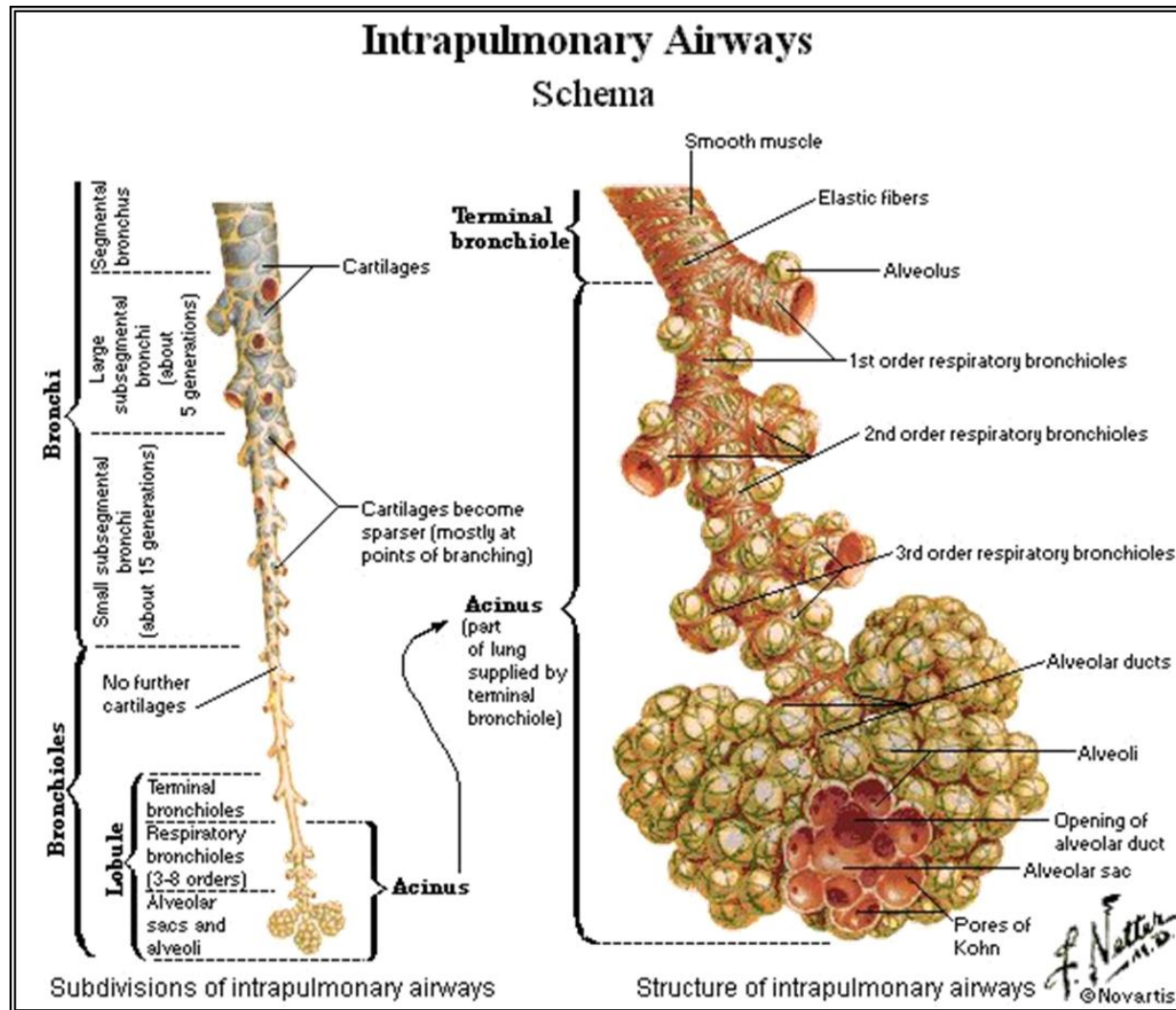




# Componentes do Sistema Respiratório

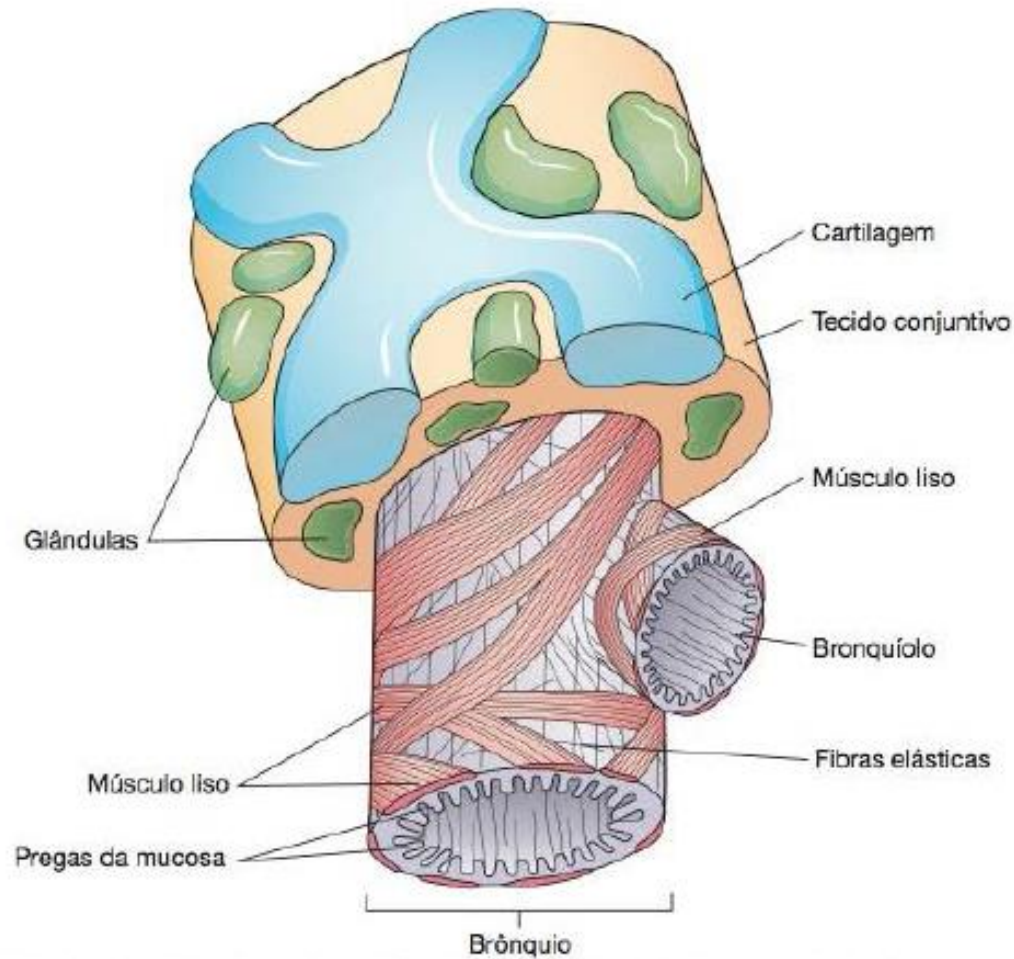


# Arvore Traqueobrônquica

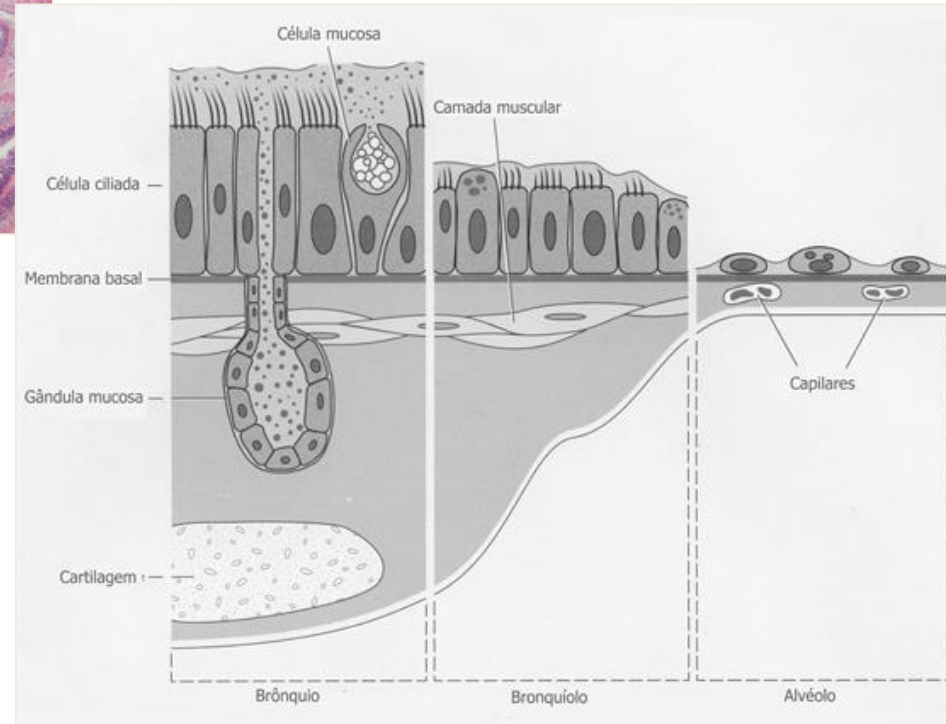
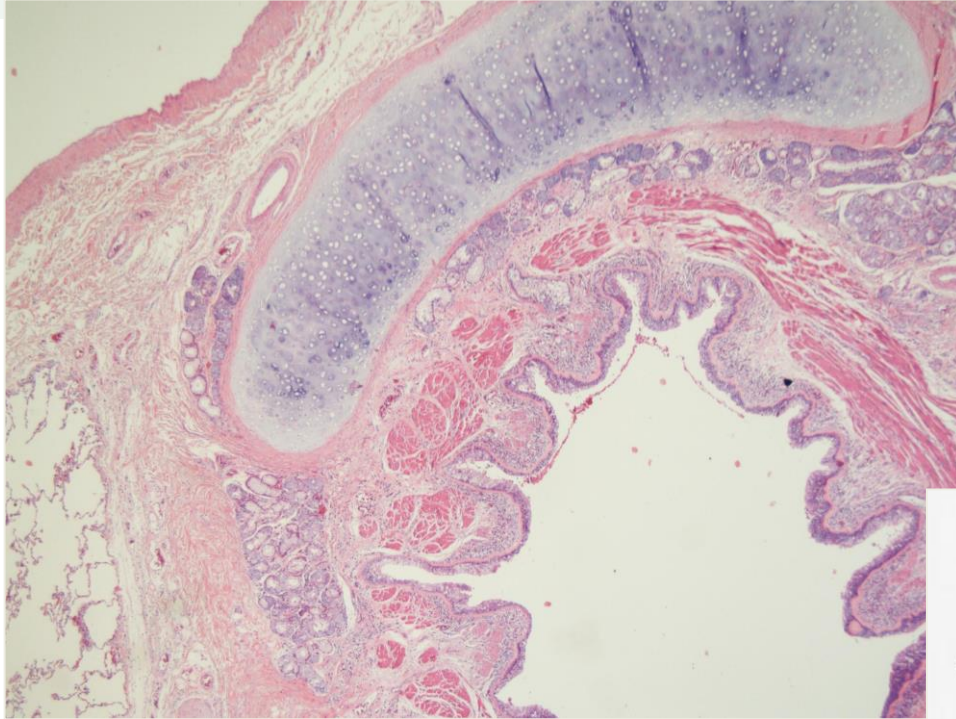




# Componentes da Parede Brônquica

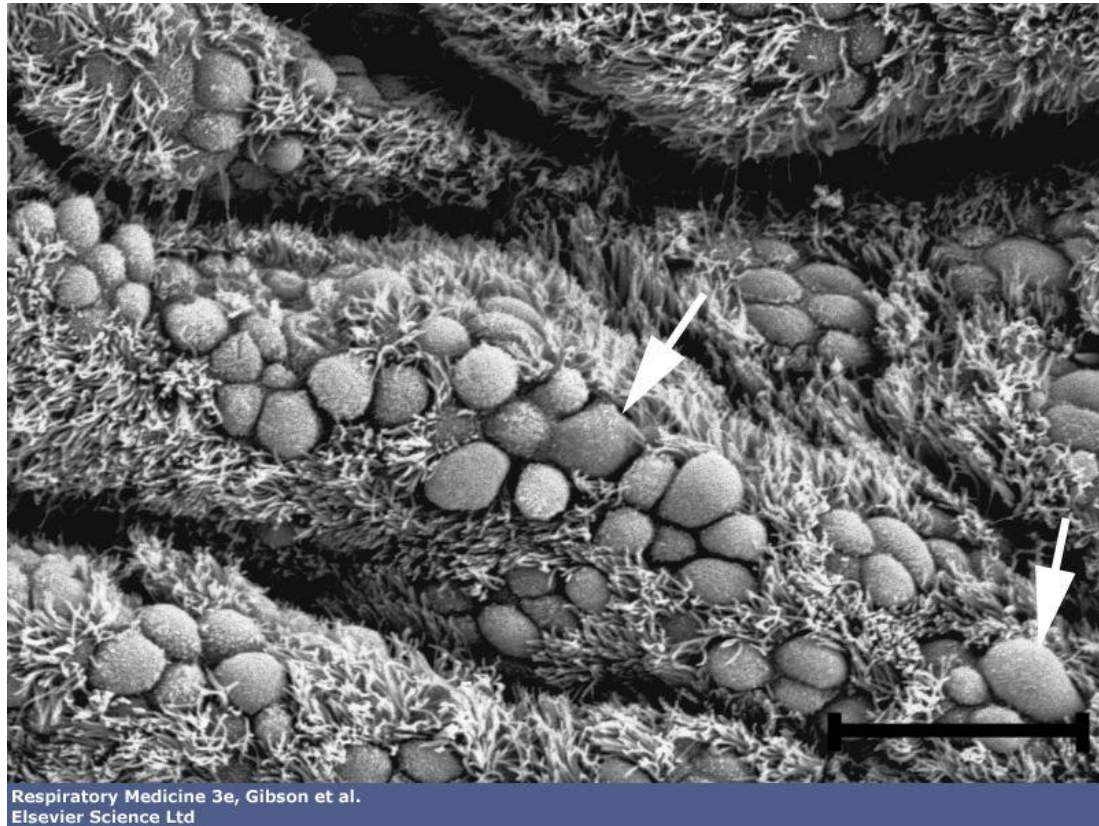


# Componentes da Parede Brônquica

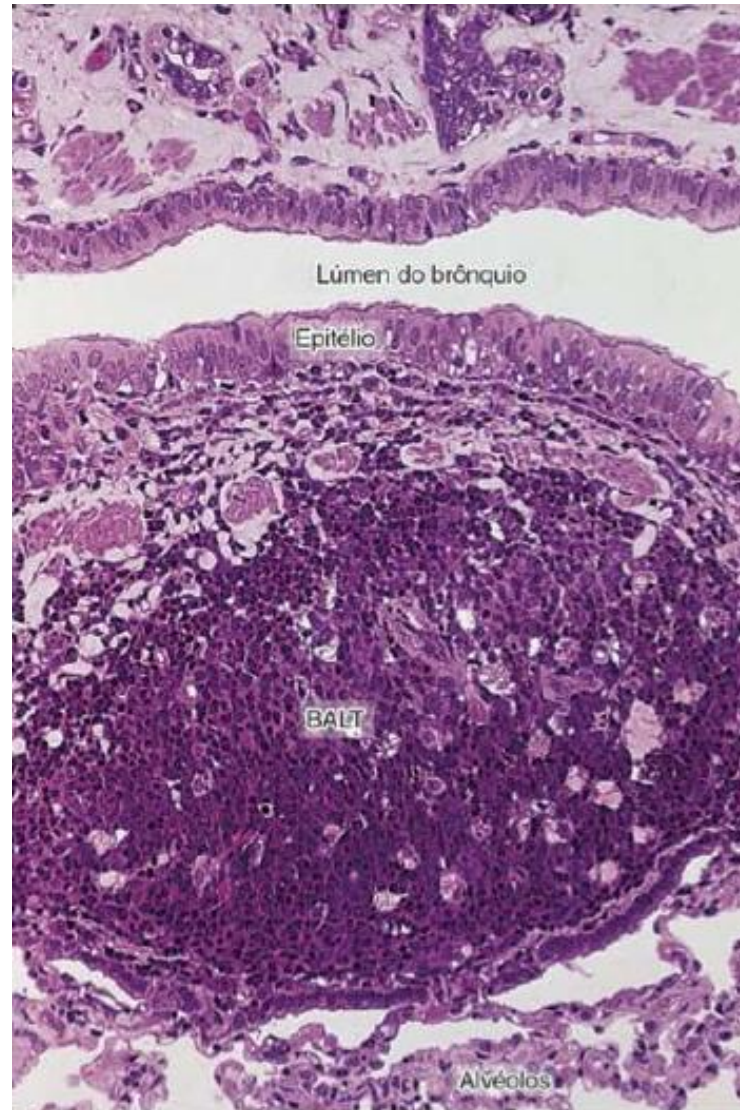




# Componentes da Parede Brônquica



# Componentes da Parede Brônquica





**Exxxcccccceeeeeente!**

