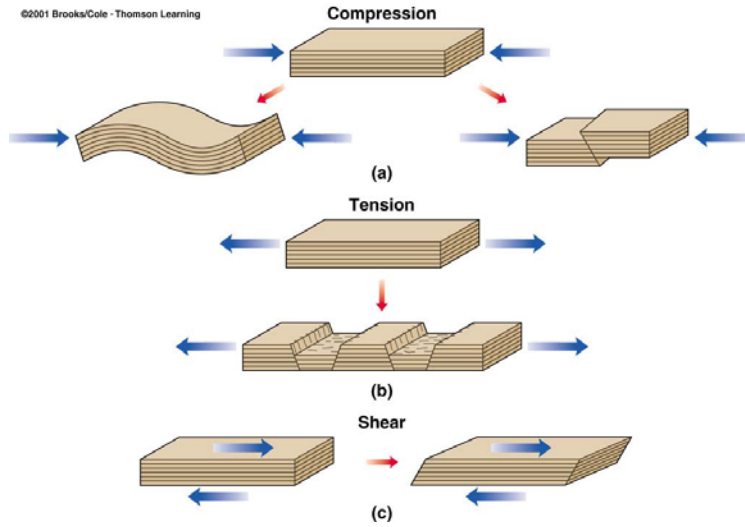
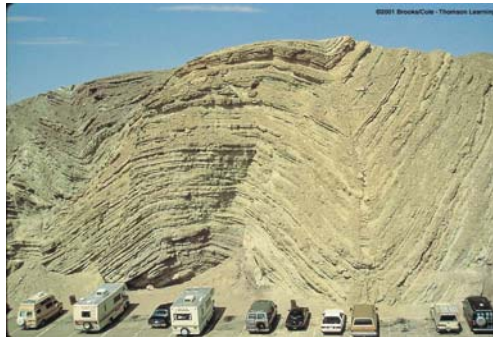
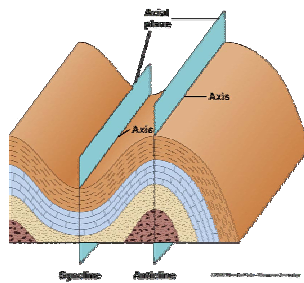


Features of Crustal Deformation



- **Folded rock layers**
 - **Monoclines**
 - bends or flexures
 - **Anticlines**
 - up-arched folds
 - **Synclines**
 - down-arched folds











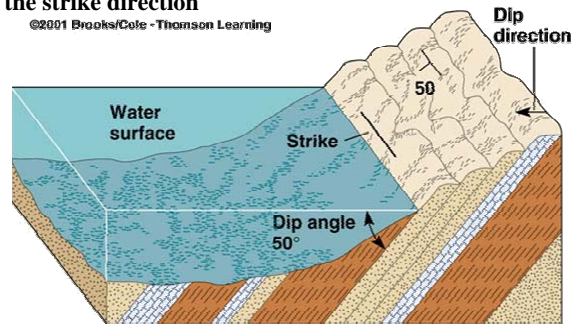
Strike and Dip

The orientation of rock layers

Strike is the compass direction of a line formed by the intersection of an inclined plane with a horizontal line

Dip is the measure of an inclined plane's maximum inclination from horizontal and is measured at right angles to the strike direction

©2001 Brooks/Cole - Thomson Learning





Fold

Fold



©2001 Brooks/Cole - Thomson Learning

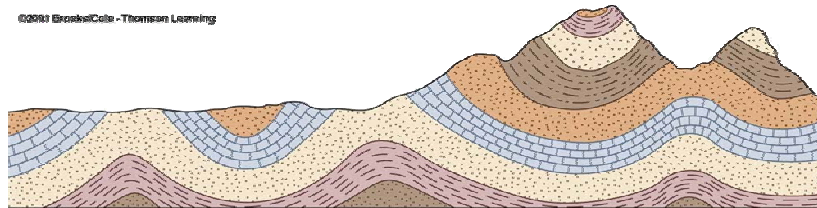
Vertical Beds



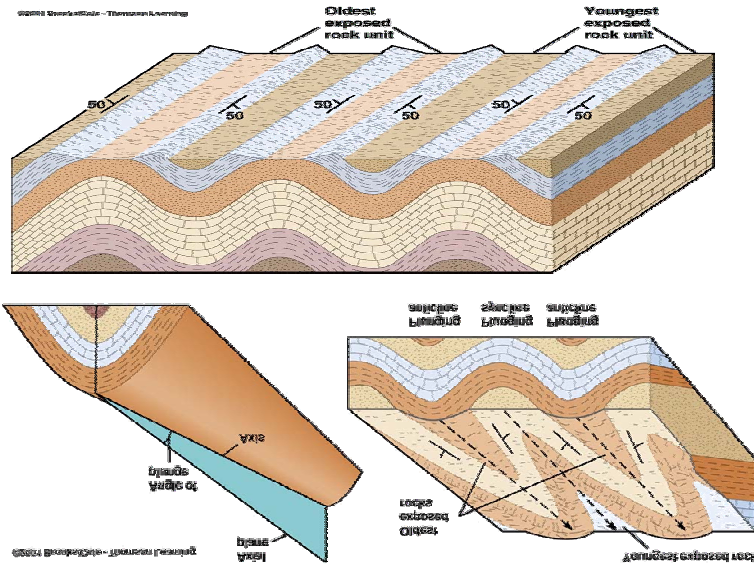
- Rock layers dip toward one another in a **syncline** and away in an **anticline**
- Older rocks are in the core of an **anticline**, younger in the core of a **syncline**



©2003 Brooks/Cole - Thomson Learning



Plunging and non-plunging folds



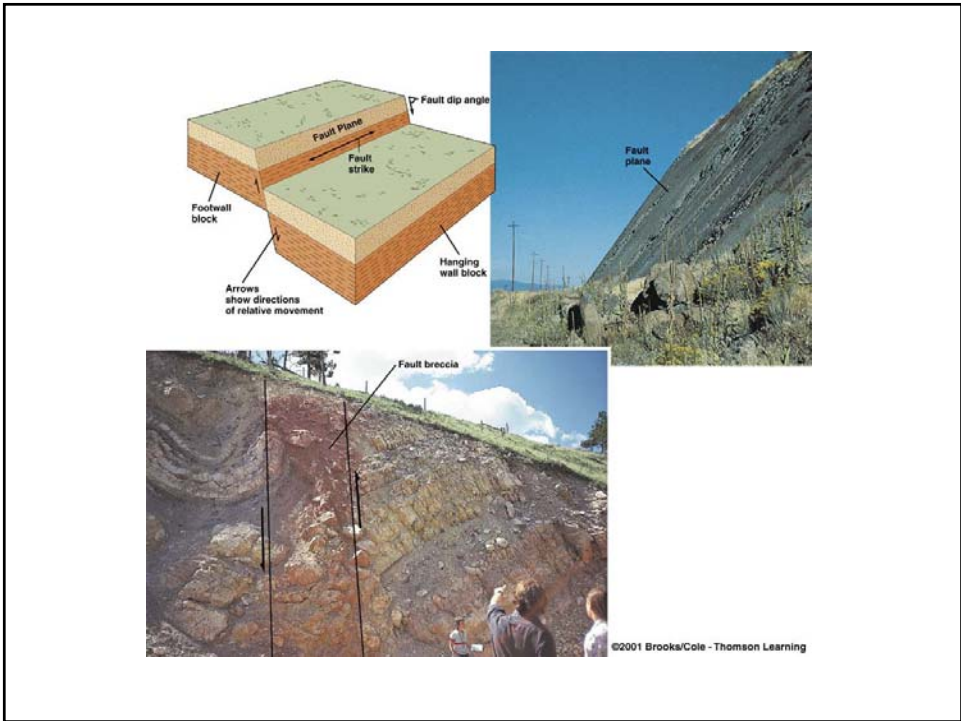




photo by Martha E. Grier



