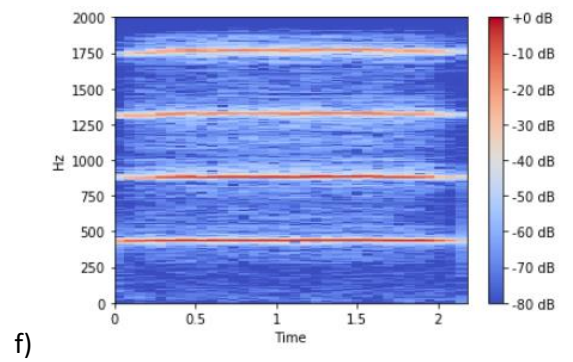
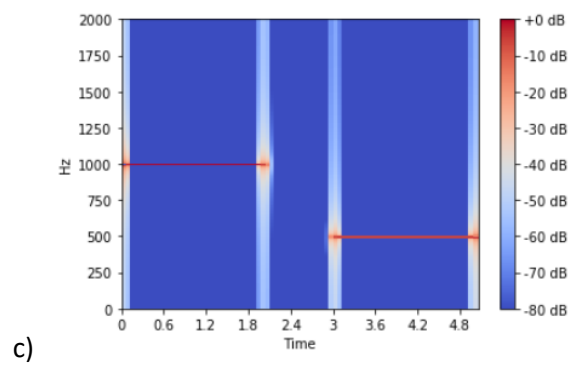
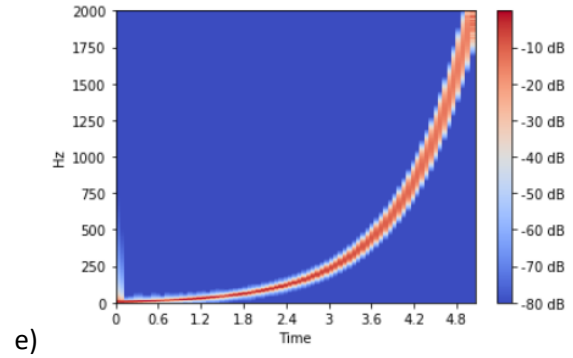
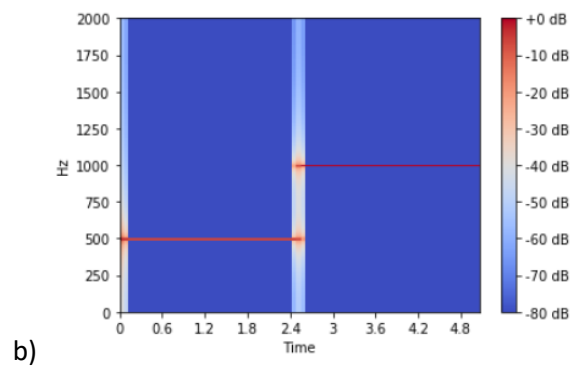
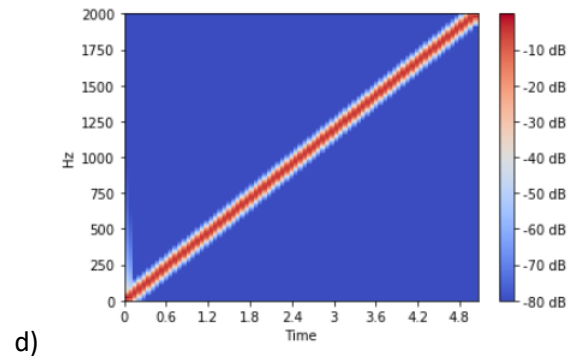
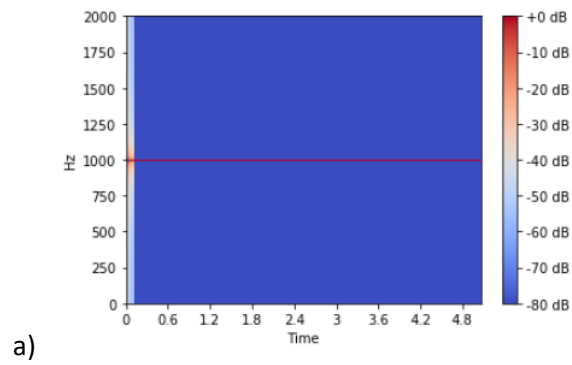
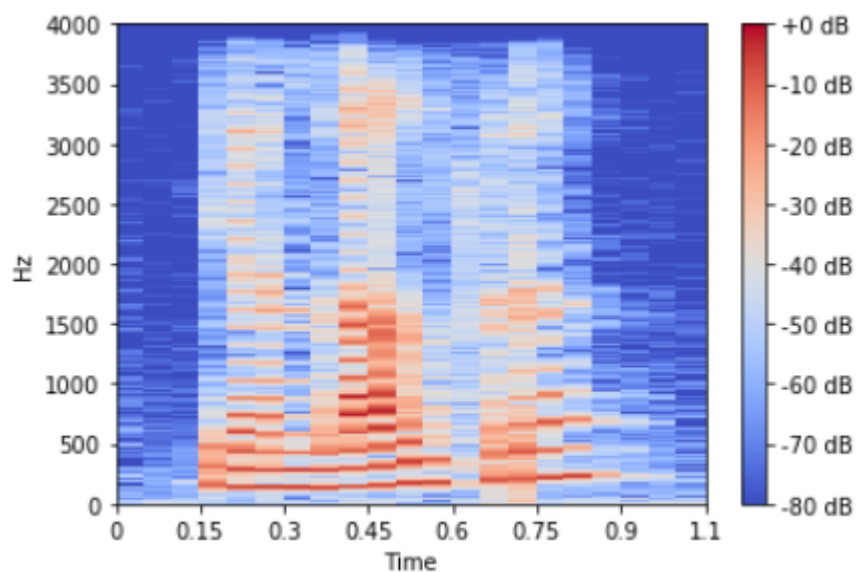


Q3) STFT – Short-Time Fourier Transform

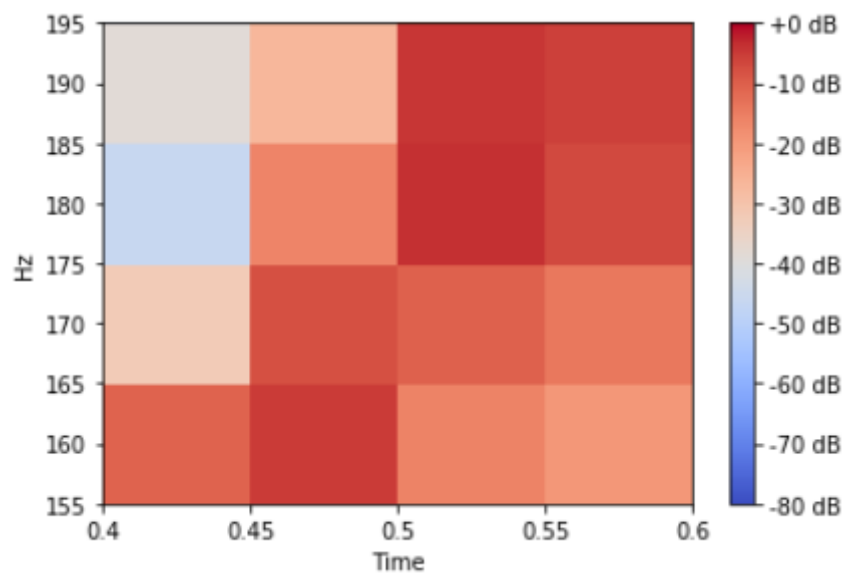
1 – Draw (sketch) the corresponding waveforms of the following spectrograms.



2 - The following figure is the spectrogram of a speech signal. What is the sampling rate of this signal?



3 – The following figure is a zoom-in of the above spectrogram. Calculate the frequency resolution and the window size (in samples)?



4 – Estimate the temporal resolution and calculate the hop size (in samples).