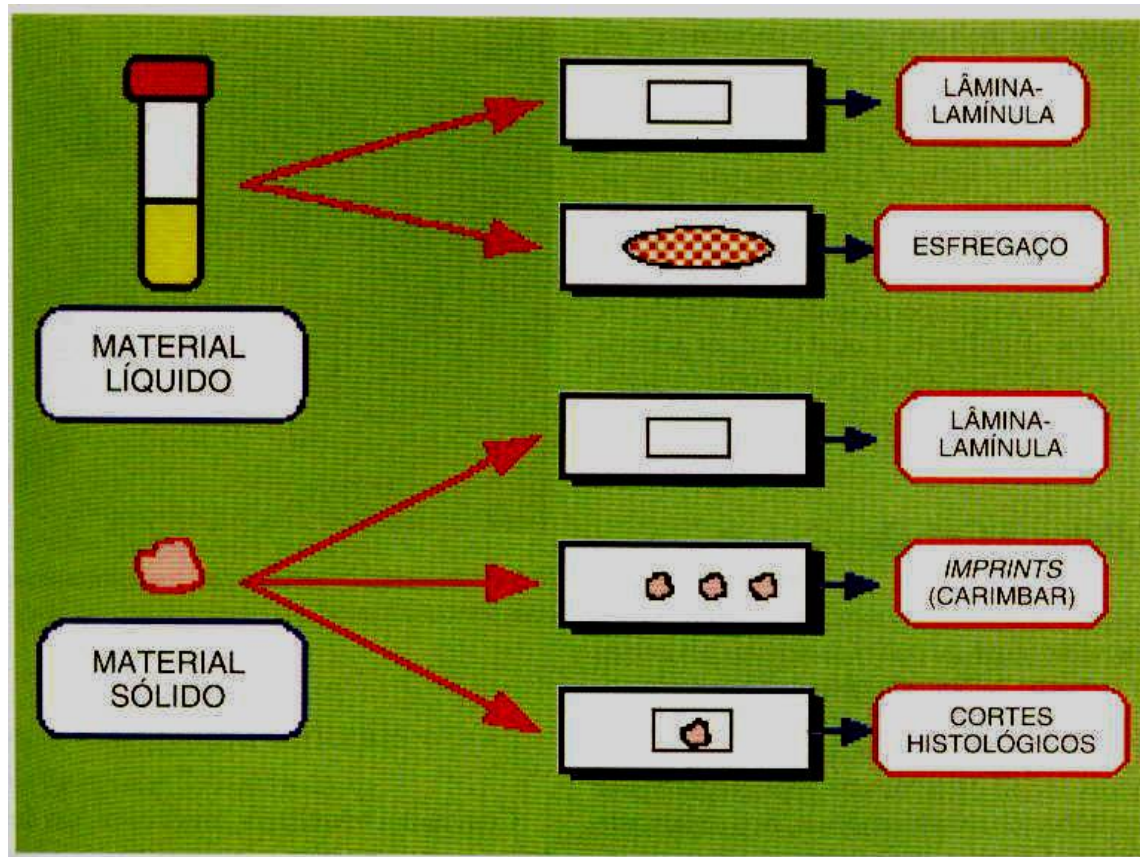


Resumo
Diagnóstico
laboratorial das
micoses

Diagnóstico micológico

1. Coleta do material
2. Exame direto
3. Cultura

Material Clínico



Coleta de material clínico

1º Assepsia

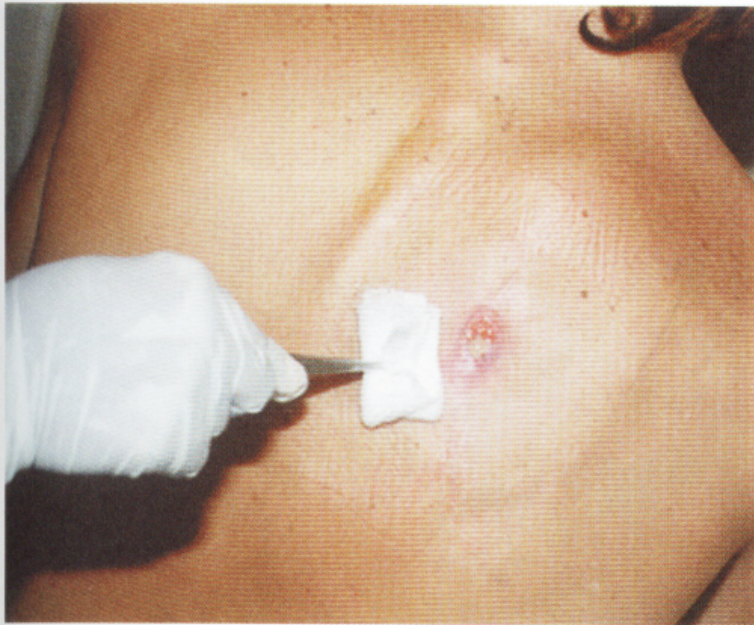


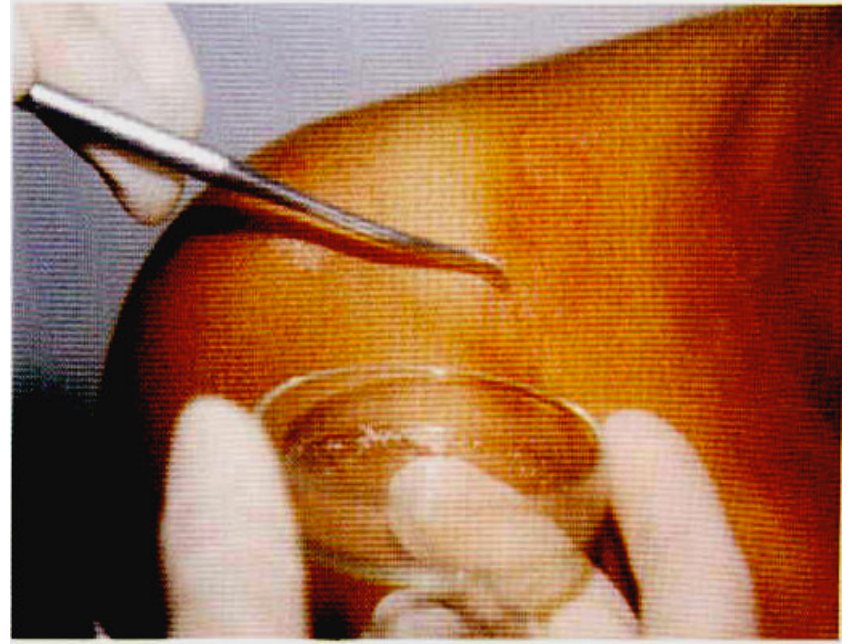
Fig. 4.2 Utilização de técnica asséptica na semeadura de material num

Coleta de material

- Pêlo/Cabelo



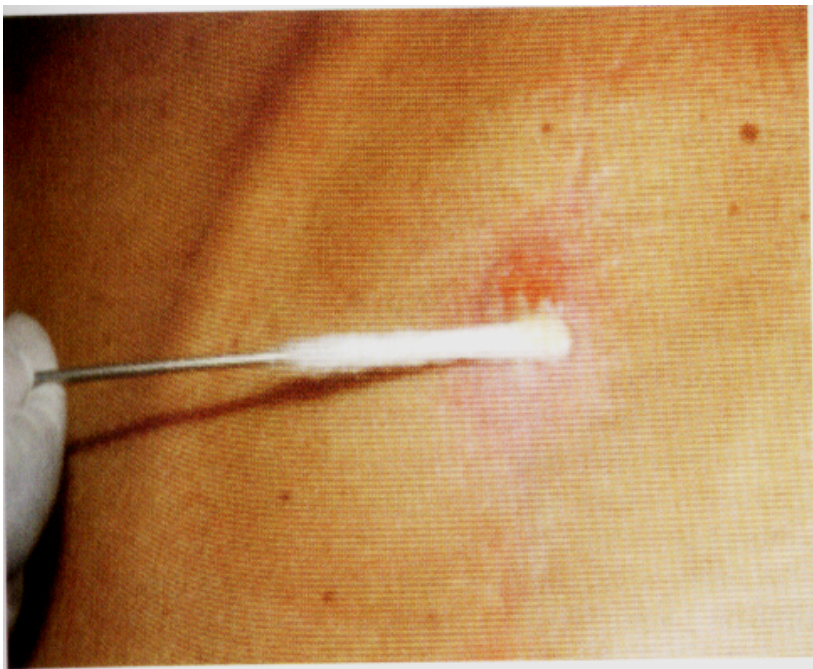
- Pele



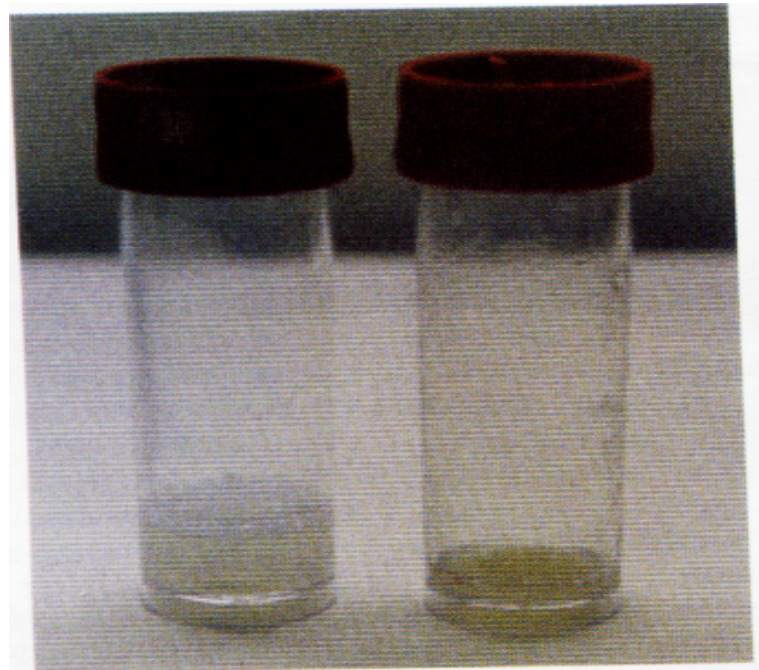
Unha



-Pus



-Escarro



Exame microscópico direto

- Material clínico clarificado com KOH 10-20%
- Biópsia:
 - Fragmento do tecido com KOH
 - Histopatológico: Coloração: Gomori, PAS, HE

Cultura

- Técnica de complemento ao exame microscópico

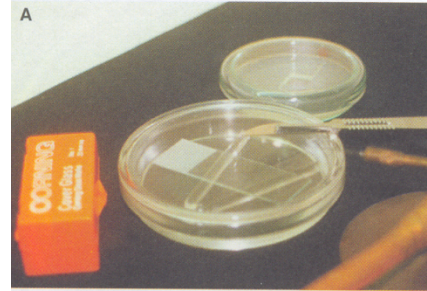
Crescimento:

- Filamentoso: 1 a 3 semanas
- Leveduriformes: 3 a 10 dias

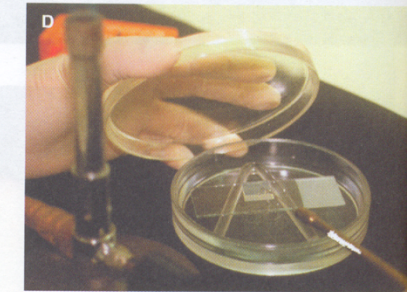
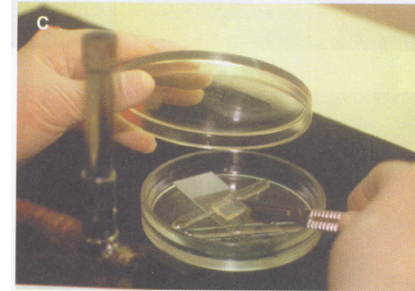
Meio de cultura: Ágar Sabouraud
+cloranfenicol+cicloheximida

Identificação de fungos filamentosos

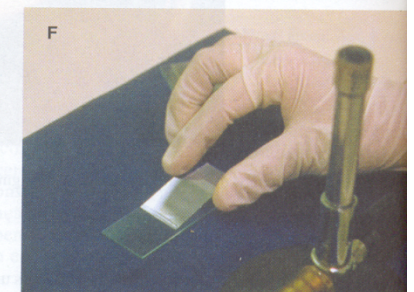
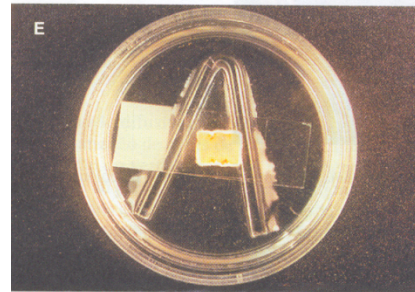
- Técnica do esgarçamento



- Técnica do microcultivo:
Ágar batata



- **Micélio reprodutivo:** Formado por conídeos ou esporos



Identificação de leveduras

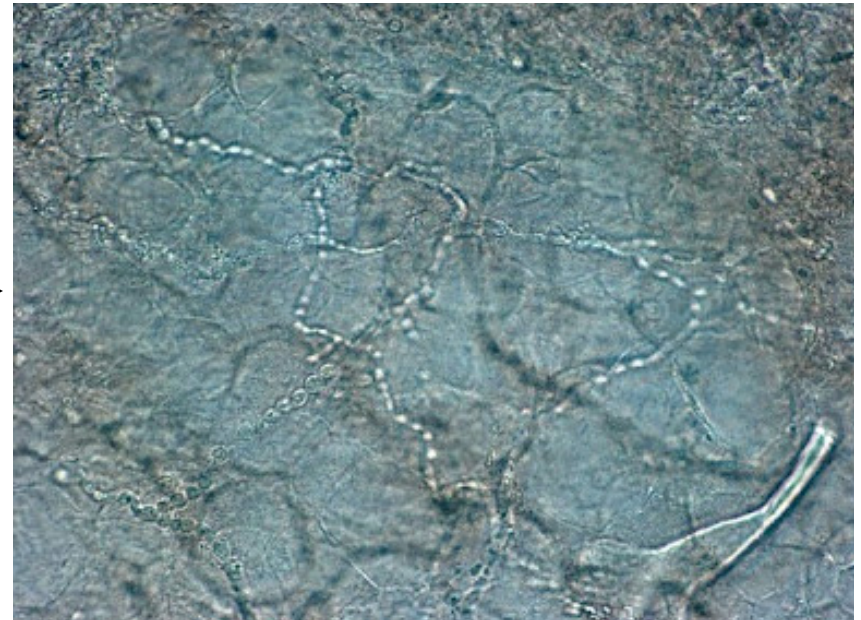
- Tubo germinativo
- Microcultivo
- Auxanograma - Assimilação de carbono e nitrogênio
- Zimograma- Fermentação de açúcares

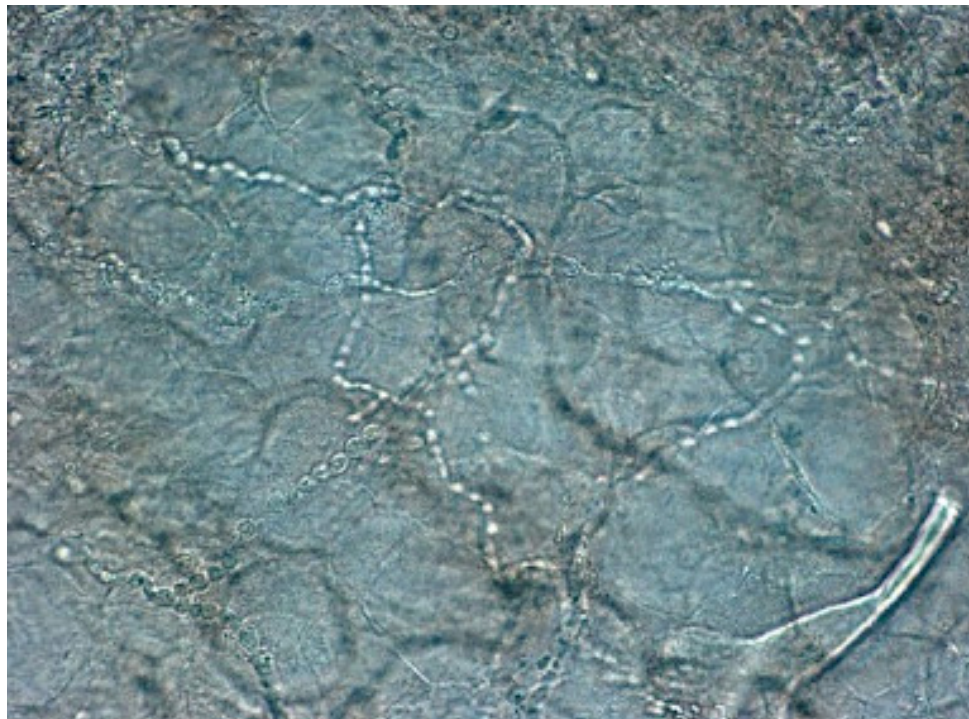
LAUDO EM MICOLOGIA

Material pele - Exame direto KOH



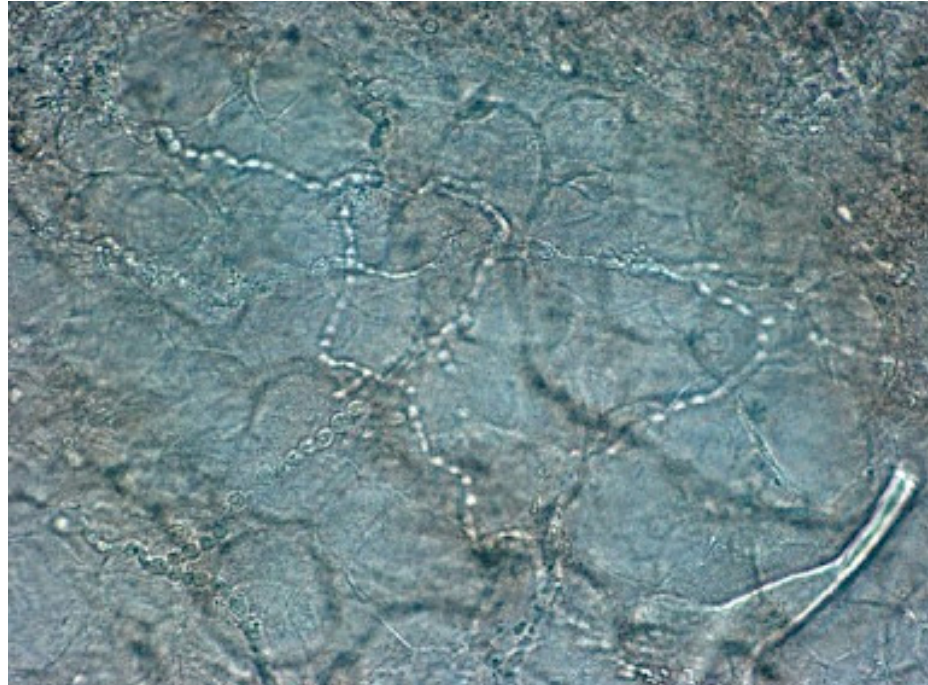
Fig. 12.8 Característica clínica da herpes circinada.





- **1a Etapa** Presença de....
- **2a Etapa** Forma Hifas.....
 Coloração Hialinas....
 Septos Septadas.....
 Achado característico Artroconidiadas
- **3a Etapa** grupamento fúngico Sugestivo de dermatófito

LAUDO FINAL

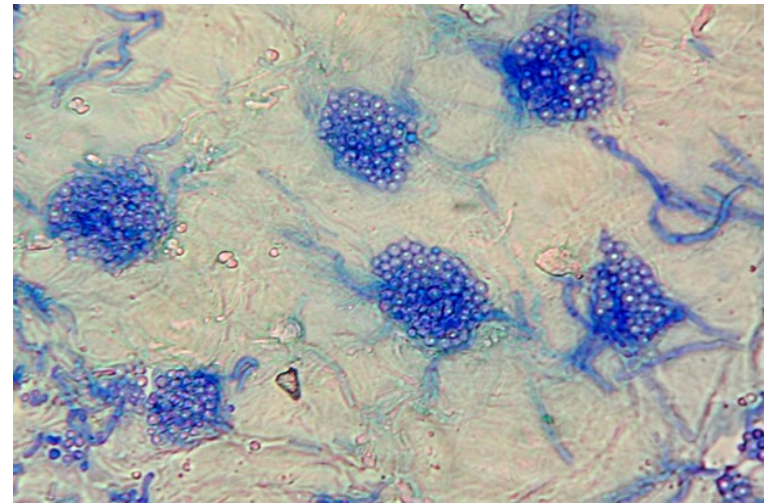


#Presença de hifas hialinas septadas e artroconidiadas, sugestivas de dermatófitos

•Laudo final: Após a cultura com o isolamento do patógeno

•Gênero e espécie: *Microsporum canis*

Micoses Superficiais-Pitiríase versicolor



Exame direto

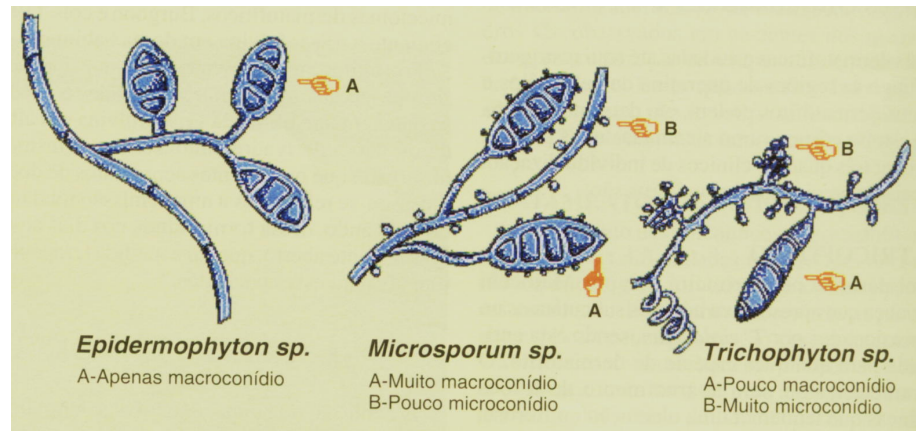
Micose Cutâneas - DERMATOFITOSE



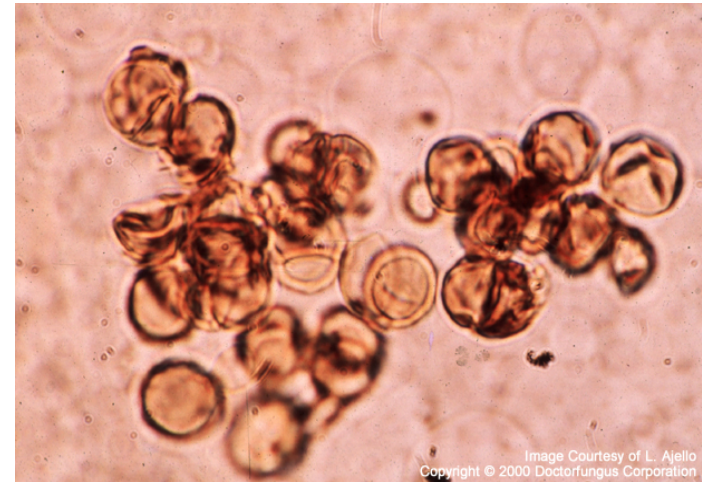
Fig. 12.8 Característica clínica da herpes circinada.



cultura



Micoses Sub-cutaneas: Cromoblastomicose

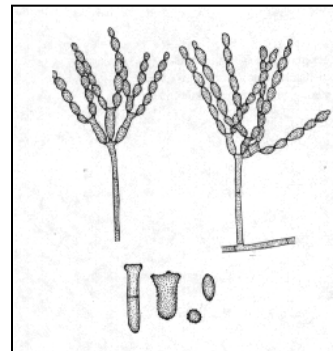


Exame direto

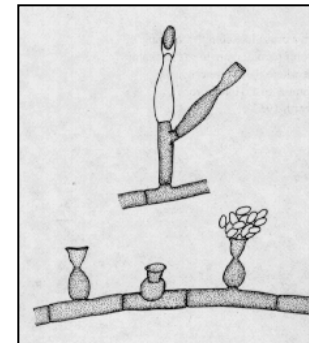
cultura



Cladosporium



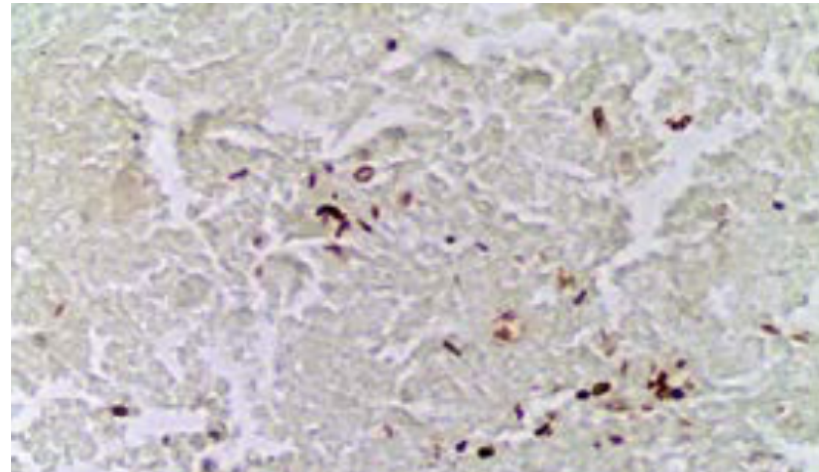
Phialophora



Rhinocladiella



Micoses Sub-cutaneas: esporotricose

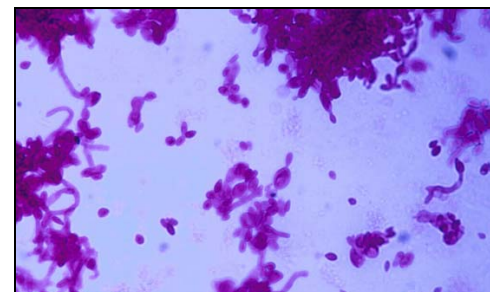
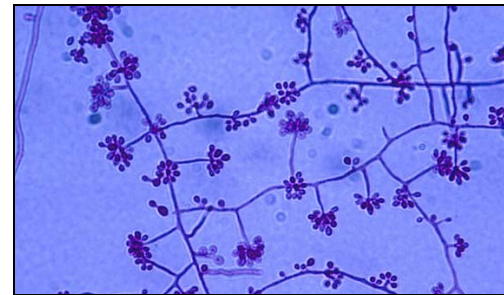


Exame direto de biopsia
Corado pela Prata

cultura

Temp. ambiente

37°C



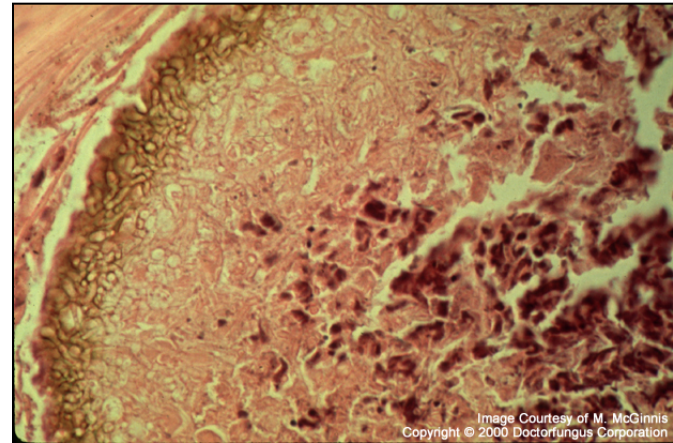
Dimorfismo
térnico

Micoses Sub-cutaneas:micetoma

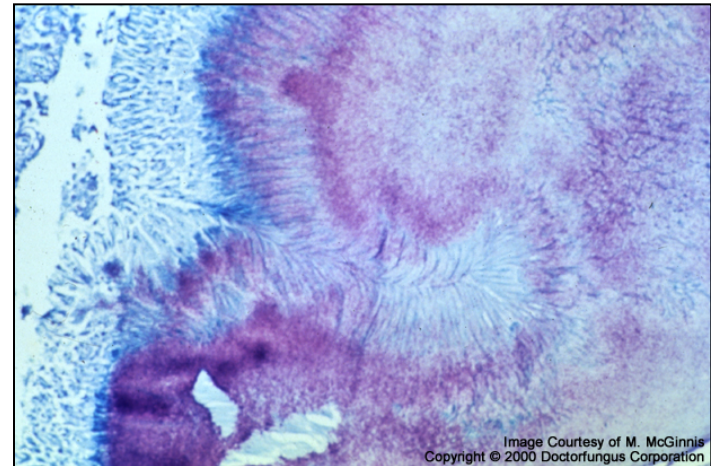


grãos

maduromicose



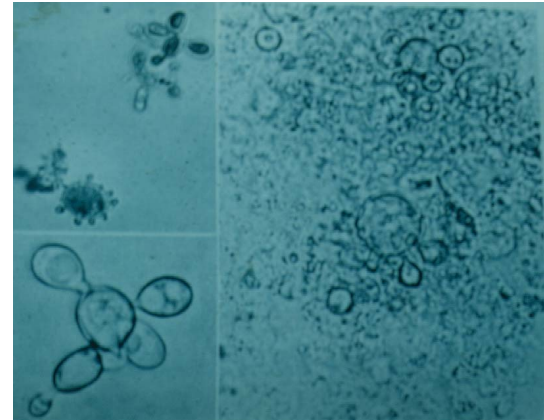
actinomicose



Micose Sistêmica- Paracoccidioidomicose



Exame direto
escarro



cultura



37°C

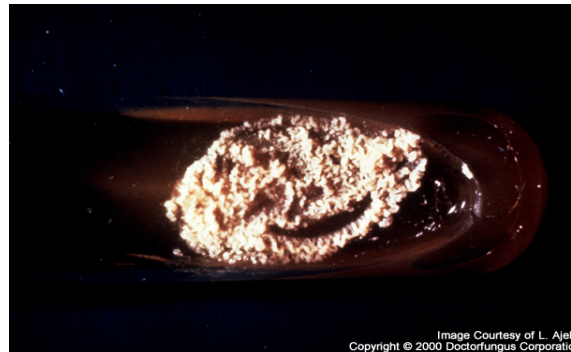


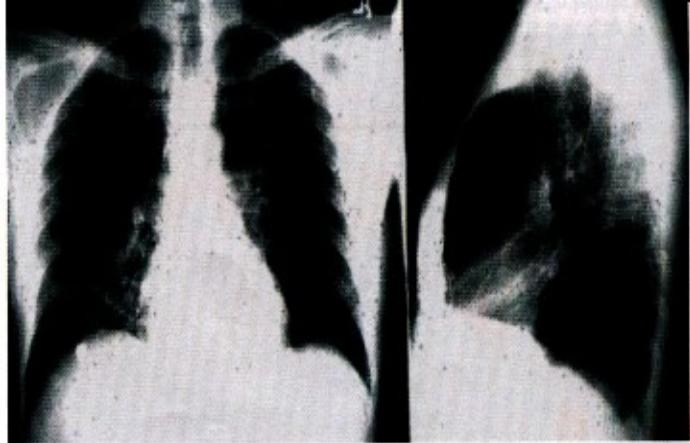
Image Courtesy of L. Ajello
Copyright © 2000 Doctorfungus Corporation



Courtesy of
The Geraldine Kaminski Medical Mycology Library
Produced by: David Ellis and Roland Hermanis
Copyright © 2003 Doctorfungus Corporation

SOROLOGIA

Micose Sistêmica- Histoplasmose



Exame direto
Escovado bronquico

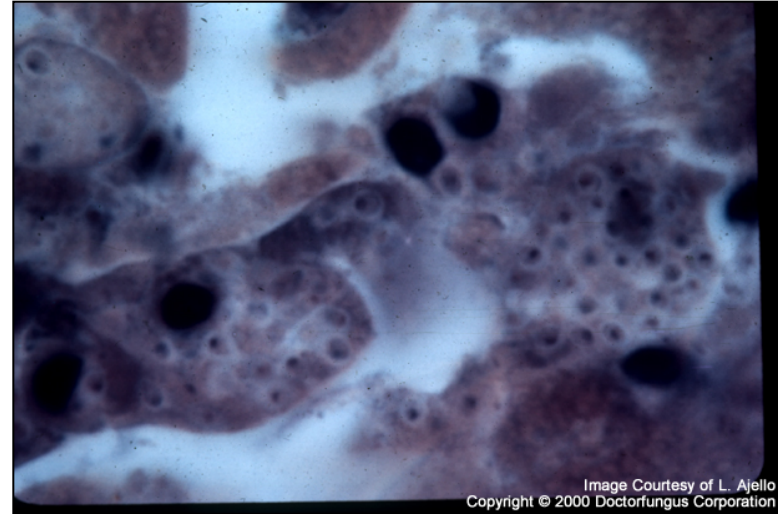


Image Courtesy of L. Ajello
Copyright © 2000 Doctorfungus Corporation

cultura



37°C

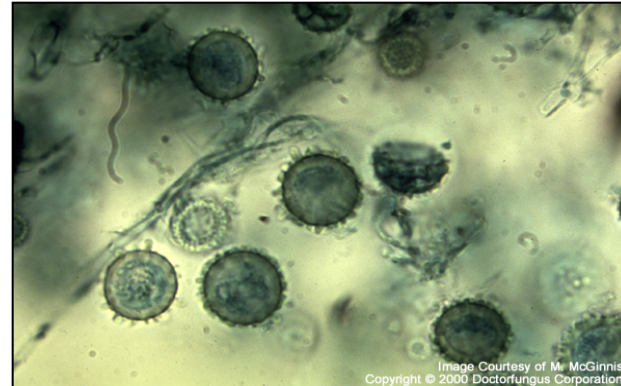


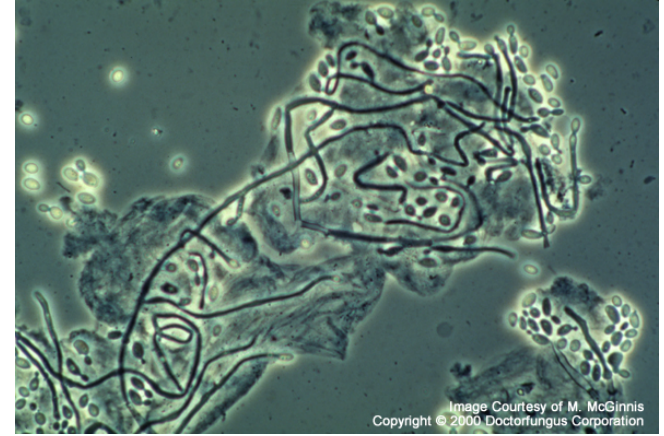
Image Courtesy of M. McGinnis
Copyright © 2000 Doctorfungus Corporation

SOROLOGIA

Micoses oportunistas-candidiases



Exame direto



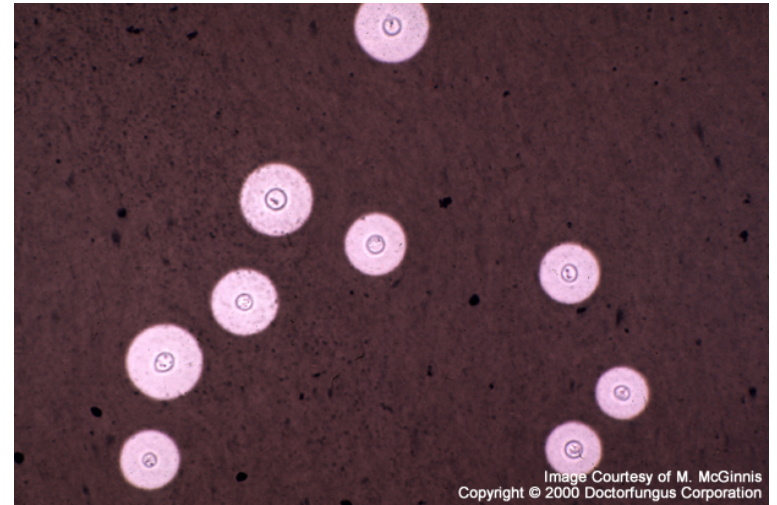
cultura

- Tubo germinativo
- Microcultivo
- Auxanograma –Assimilação de carbono e nitrogênio
- Zimograma- Fermentação de açúcares

Micoses oportunistas- criptococose

Exame direto

Líquor
Tinta da china ou nanquim
→



cultura



Agar niger: criptococcus +

Micoses oportunistas-zigomicose



Exame direto ou biopsia

