



UNIVERSIDADE DE SÃO PAULO

FACULDADE DE ODONTOLOGIA DE RIBEIRÃO PRETO

ODONTOMETRIA

DISCIPLINA DE ENDODONTIA

Prof. Dr. ANTONIO MIRANDA DA CRUZ FILHO

PREPARO CERVICAL

LA Axxess



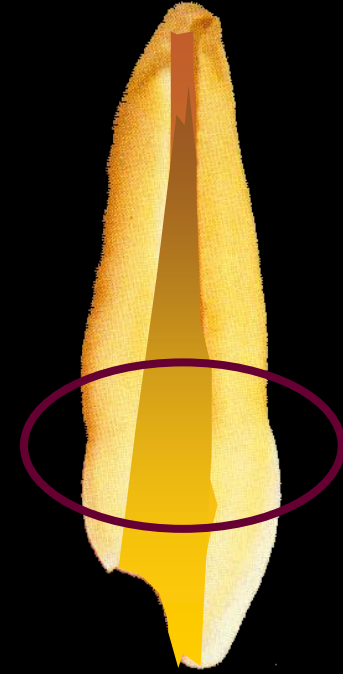
20/06



35/06

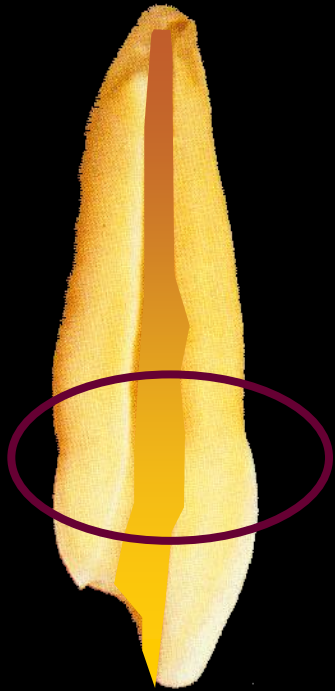


45/06



PREPARO CERVICAL

LA Axxess



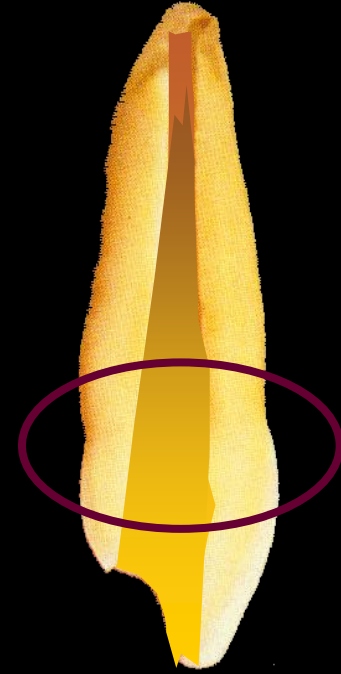
CP/06/11



35/06



45/06

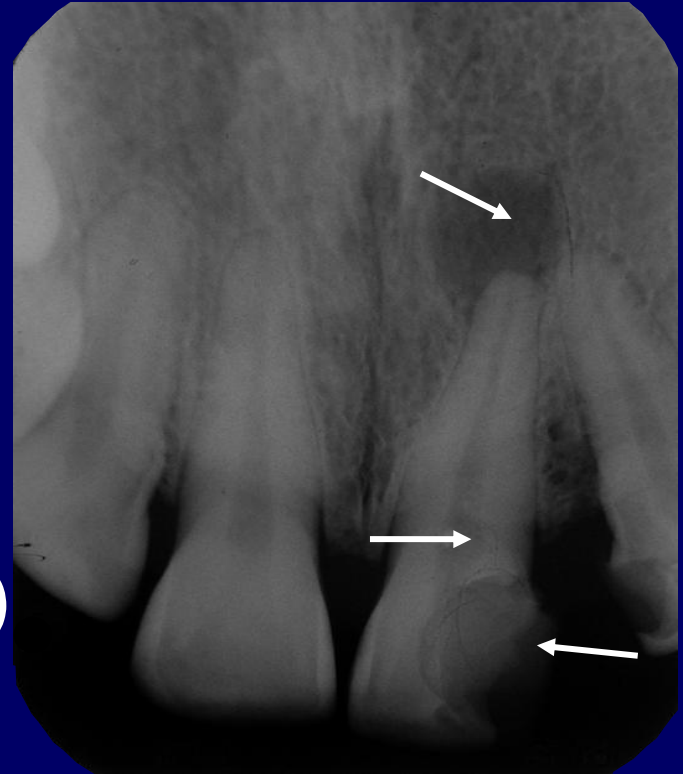


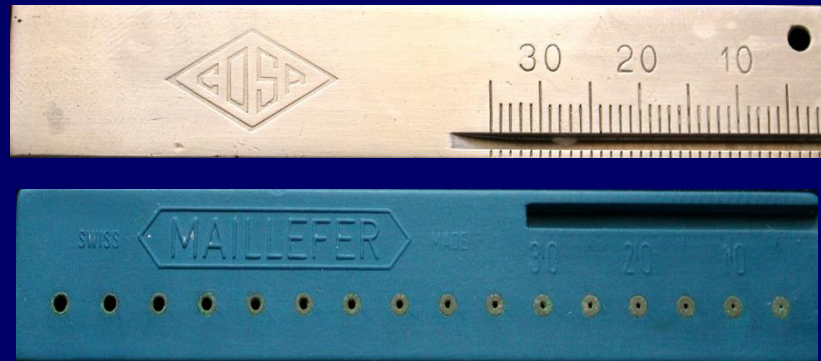
PREPARO CERVICAL



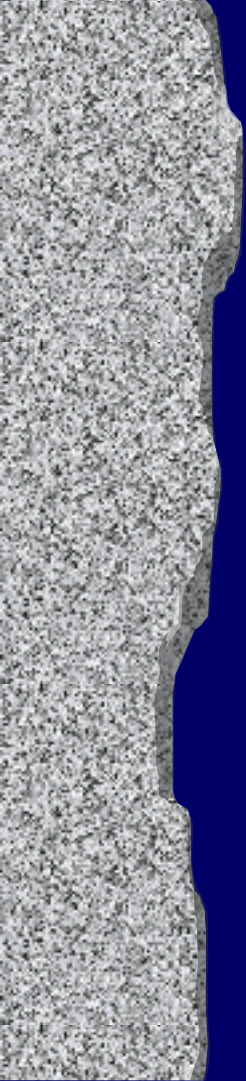
RADIOGRAFIA

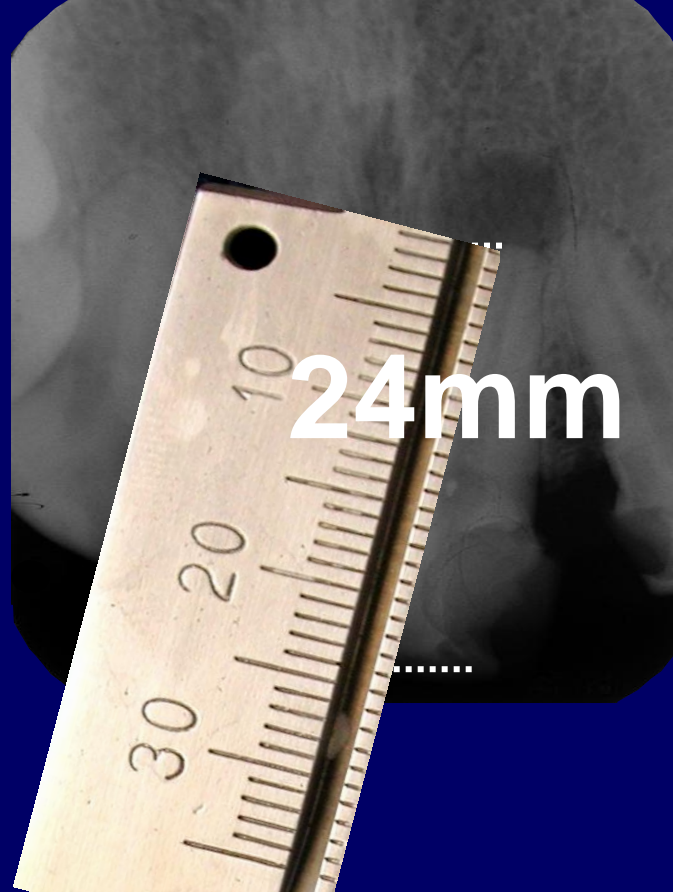
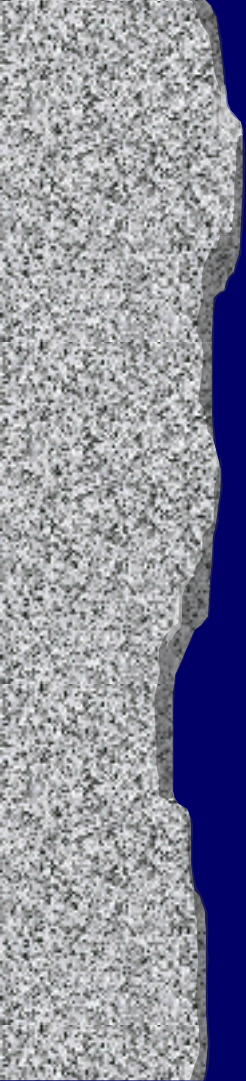
INICIAL
ESTUDO
DIAGNÓSTICO





RÉGUA CALIBRADORA





24mm

CAE - 4mm

24mm

MARGEM DE SEGURANÇA

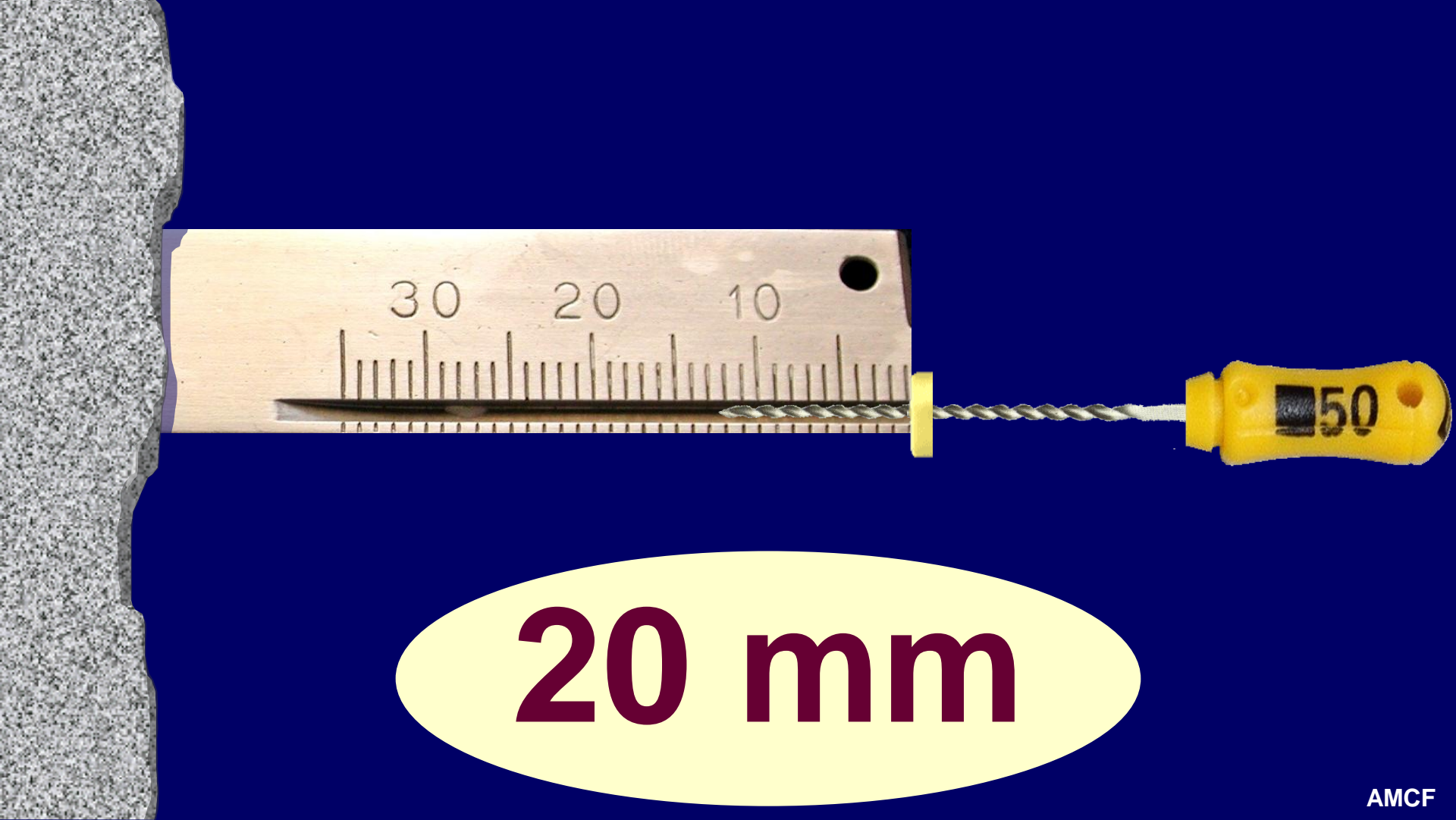
CAE - 4mm

24mm

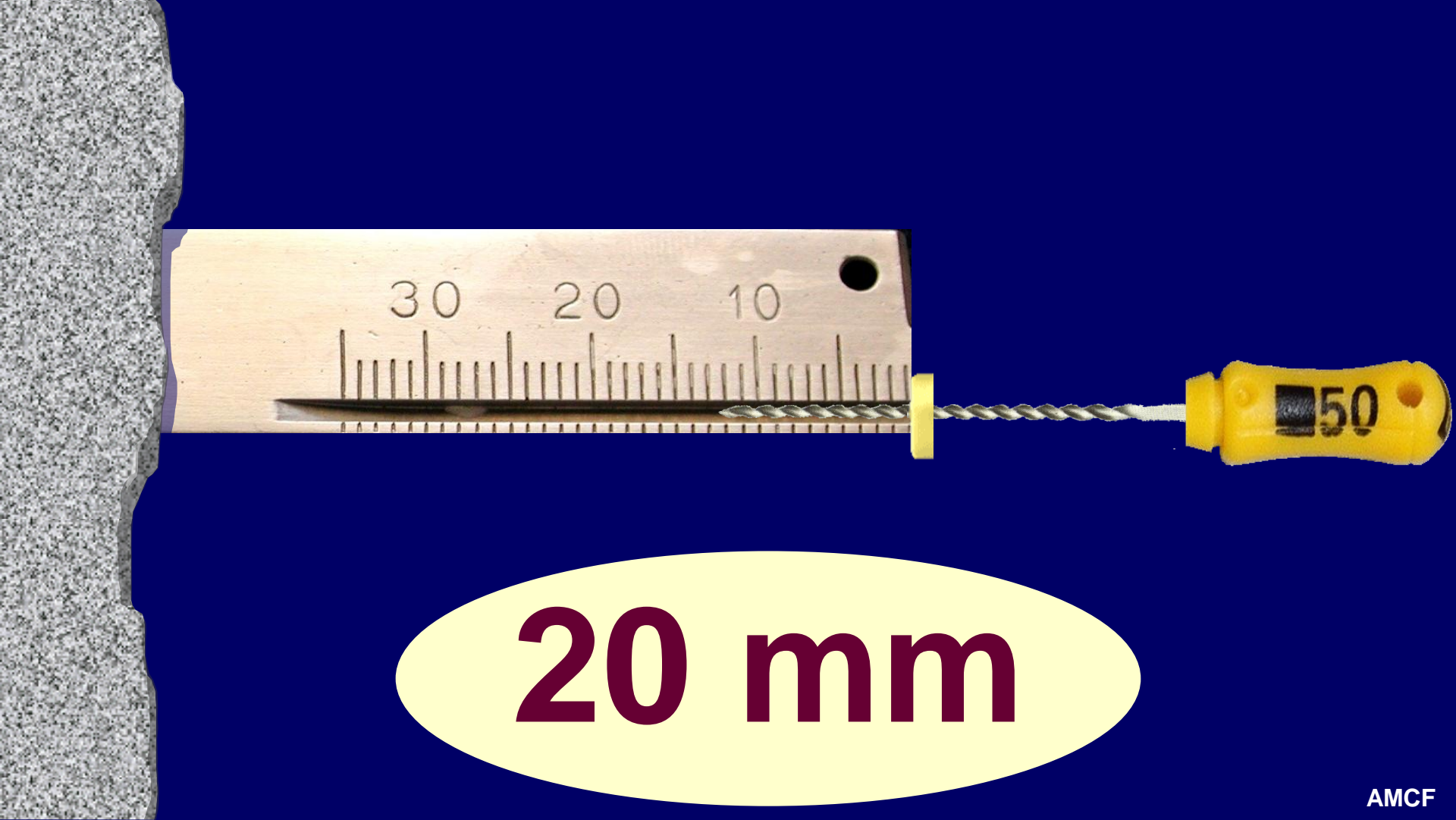
24mm

20mm

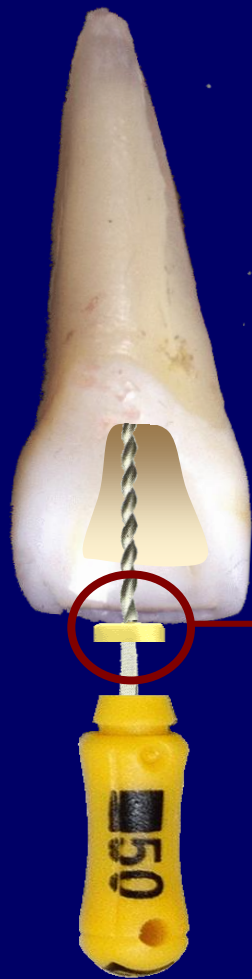
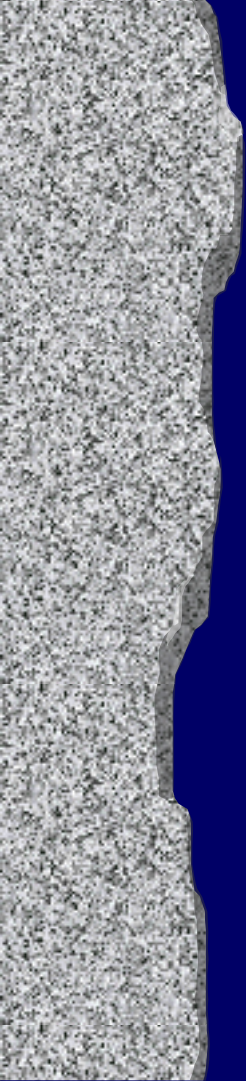
MARGEM DE SEGURANÇA
COMPRIMENTO DE TRABALHO PROVISÓRIO



20 mm



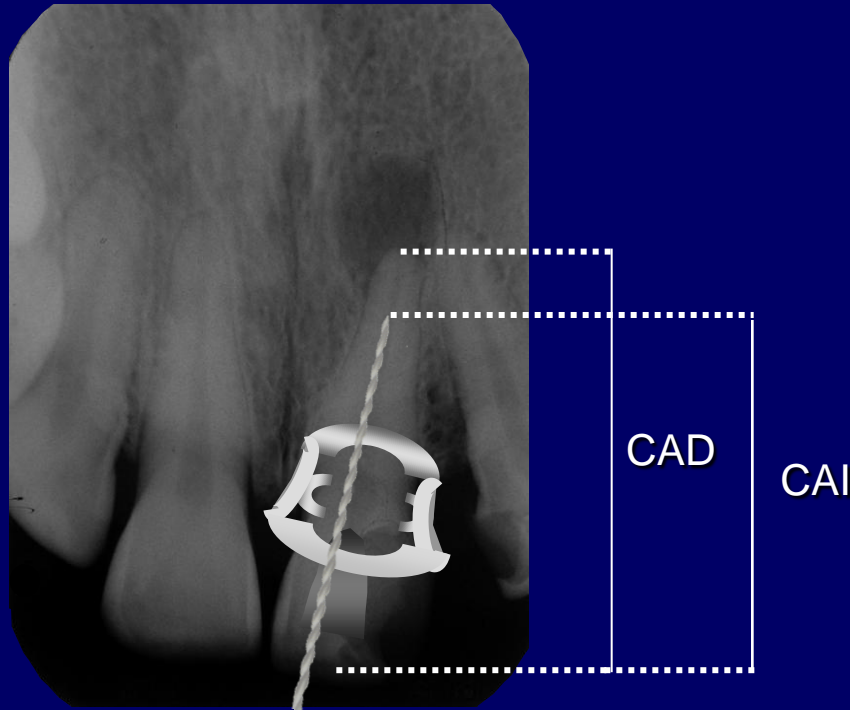
20 mm



Ponto de referência



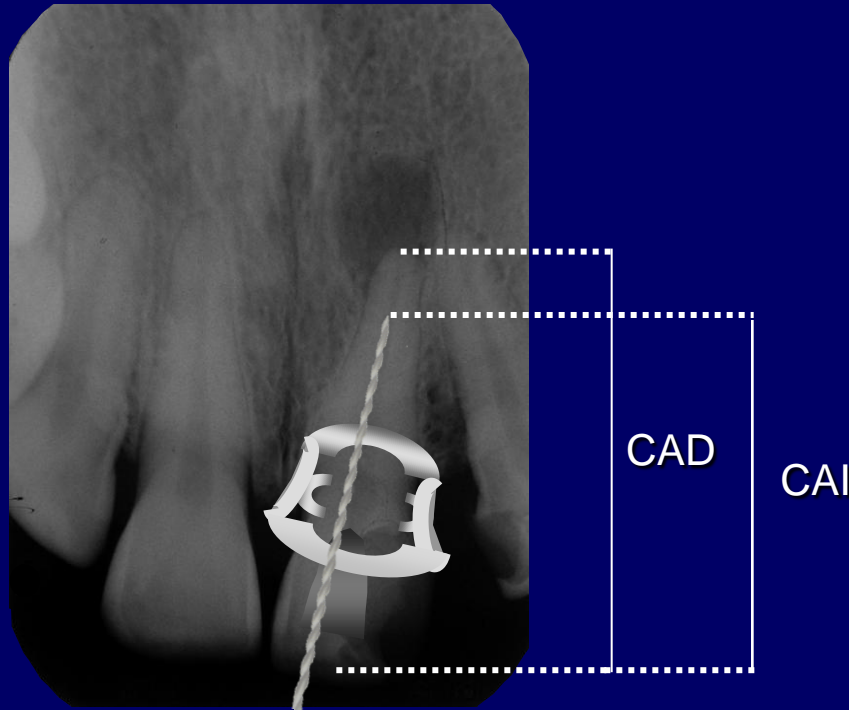
2ª RADIOGRAFIA



20mm

$$CRD = \frac{CRI \times CAD}{CAI}$$

2ª RADIOGRAFIA

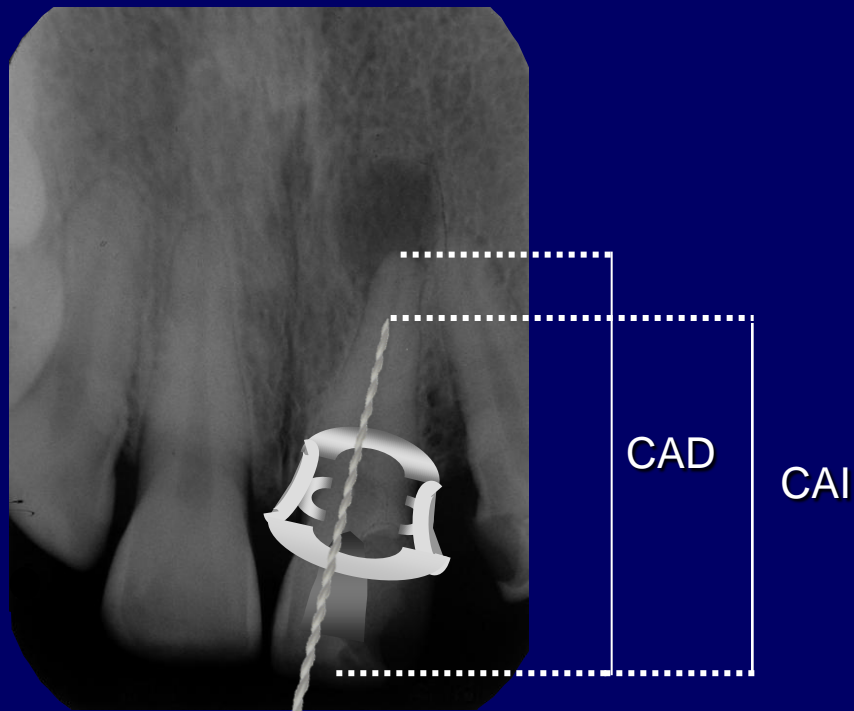


20mm

$$\text{CRD} = \frac{\text{CRI} \times \text{CAD}}{\text{CAI}}$$

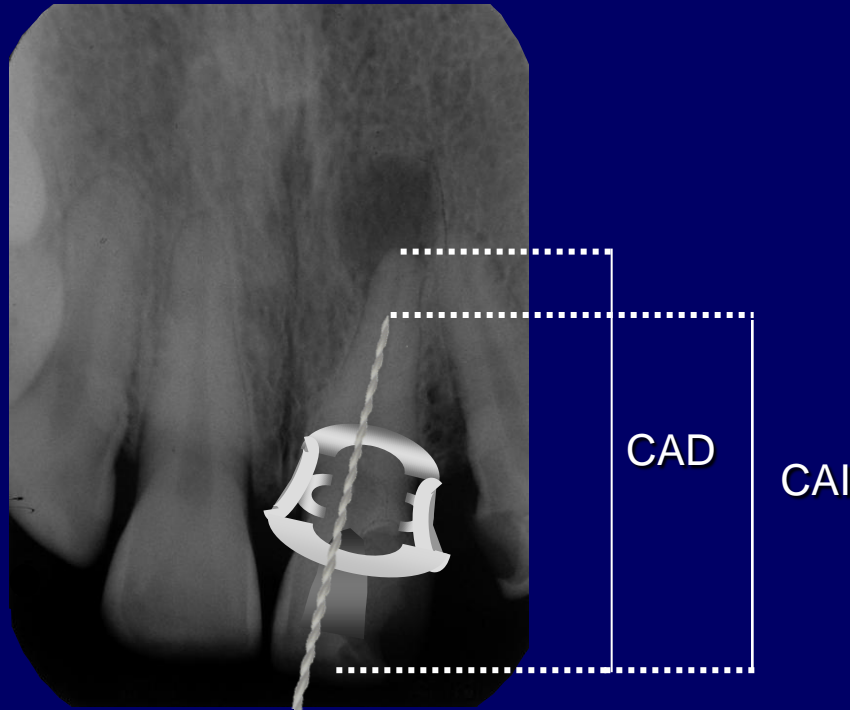
~~22,5 mm~~

2ª RADIOGRAFIA



CRD = 22,5 mm

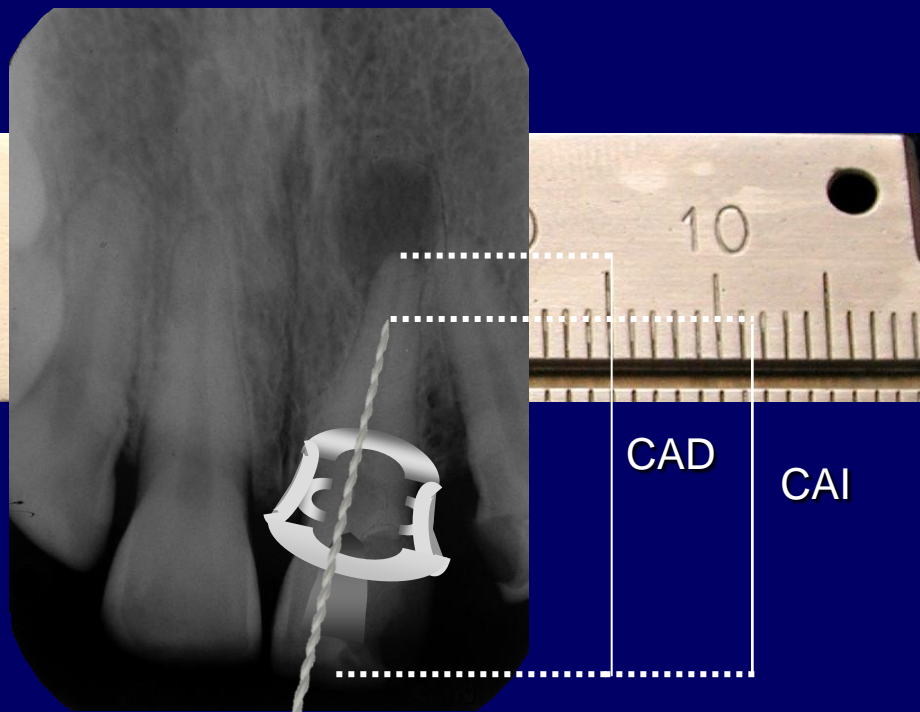
2ª RADIOGRAFIA



$$\text{CRD} = 22,5 \text{ mm}$$

$$\text{CT} = \text{CRD} - 1 \text{ a } 0,5$$

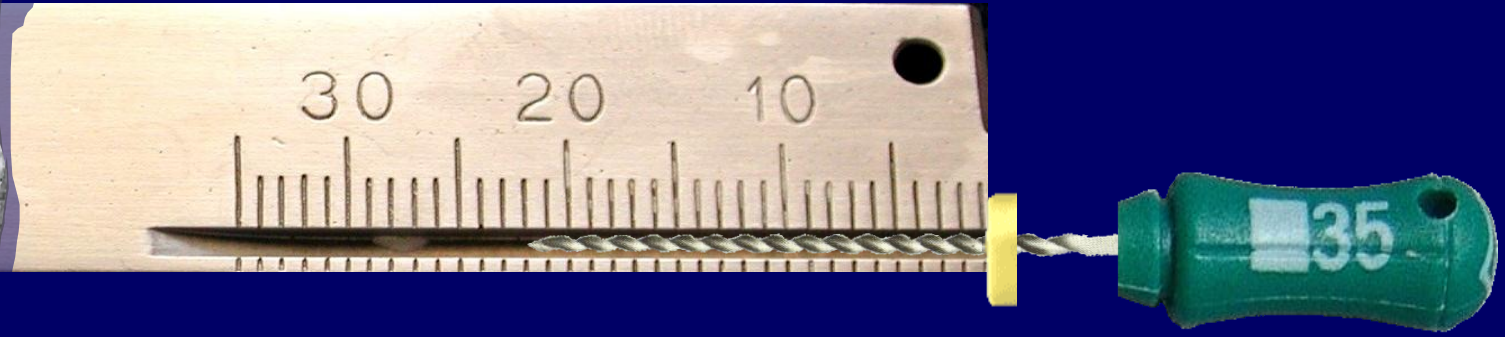
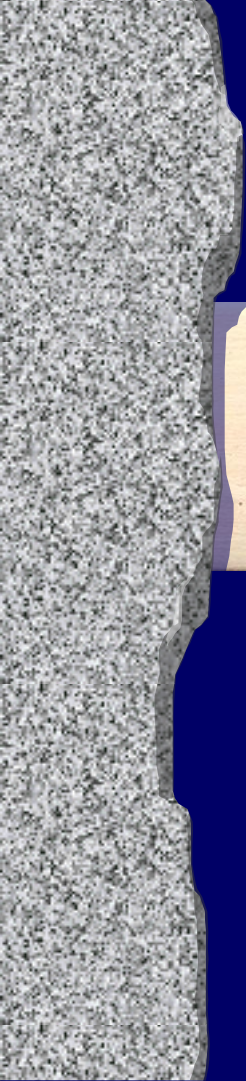
2ª RADIOGRAFIA



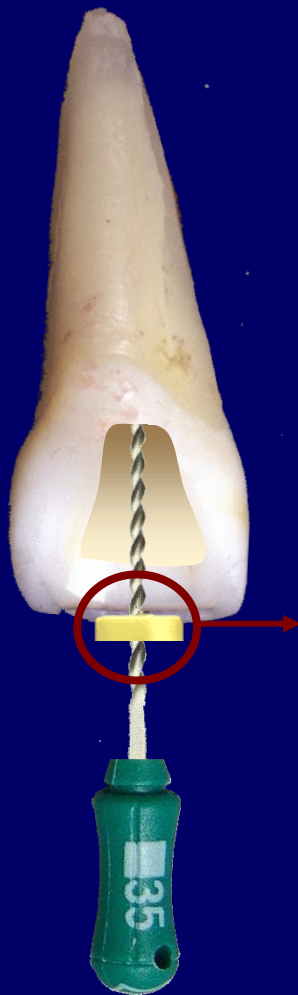
CRD = 22,5 mm

CT = CRD - 1 a 0,5

CT = 22,0 mm



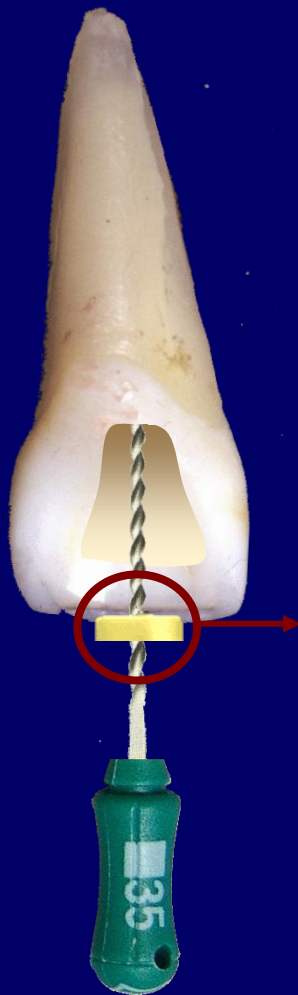
CT = 22,0 mm



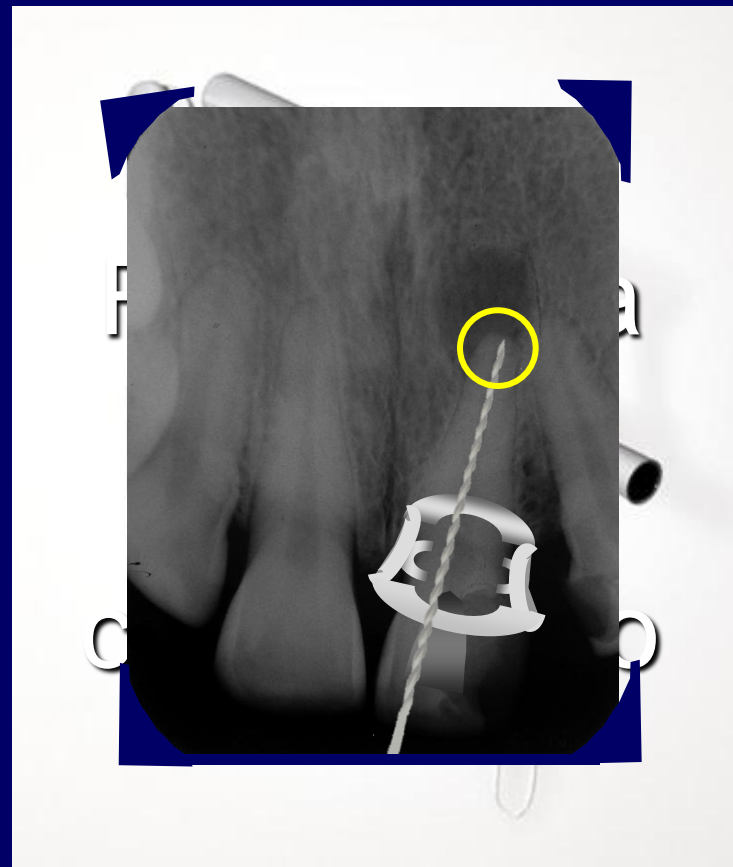
Manter o mesmo
ponto de
referência

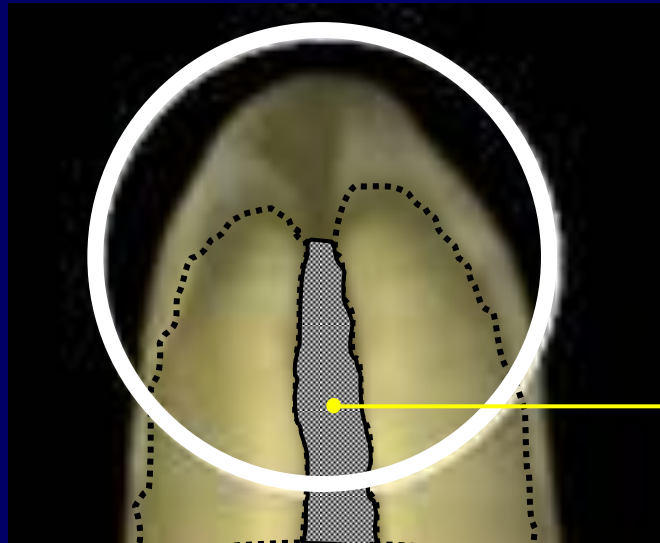
Radiografia
de
confirmação



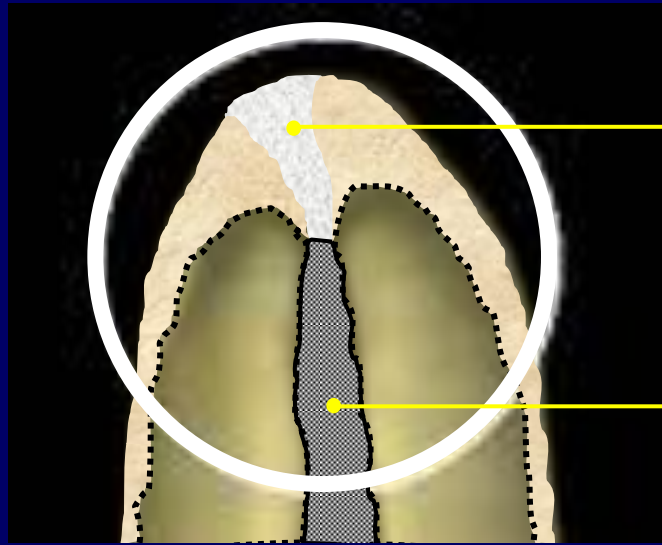
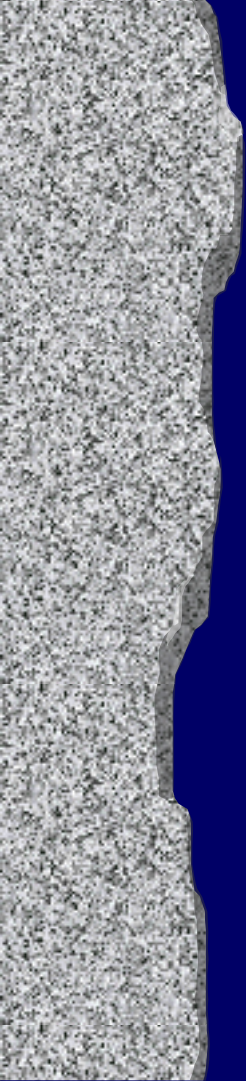


Manter o mesmo
ponto de
referência



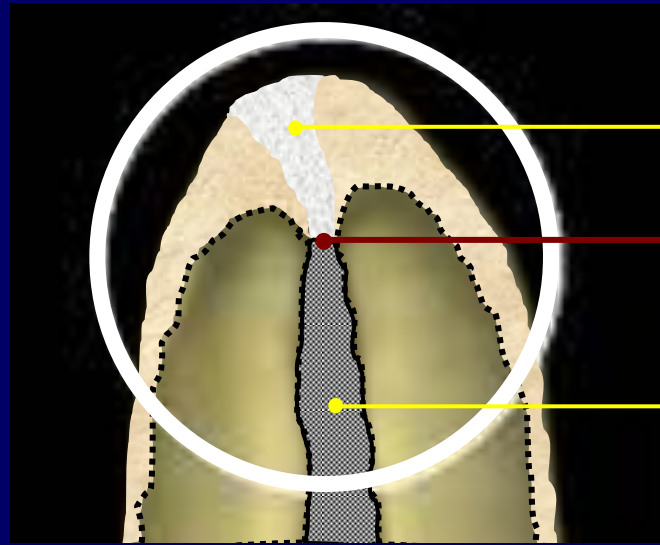


canal dentinário



canal cementário

canal dentinário

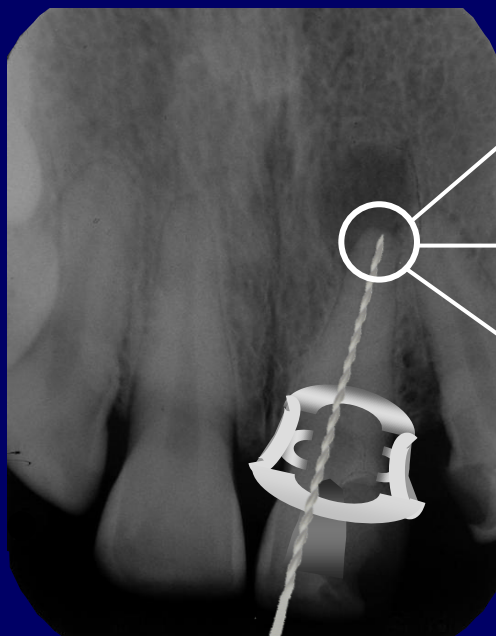


canal cementário

Limite CDC

canal dentinário

Limite **CDC** – Limite entre o **C**anal **D**entinário e **C**ementário

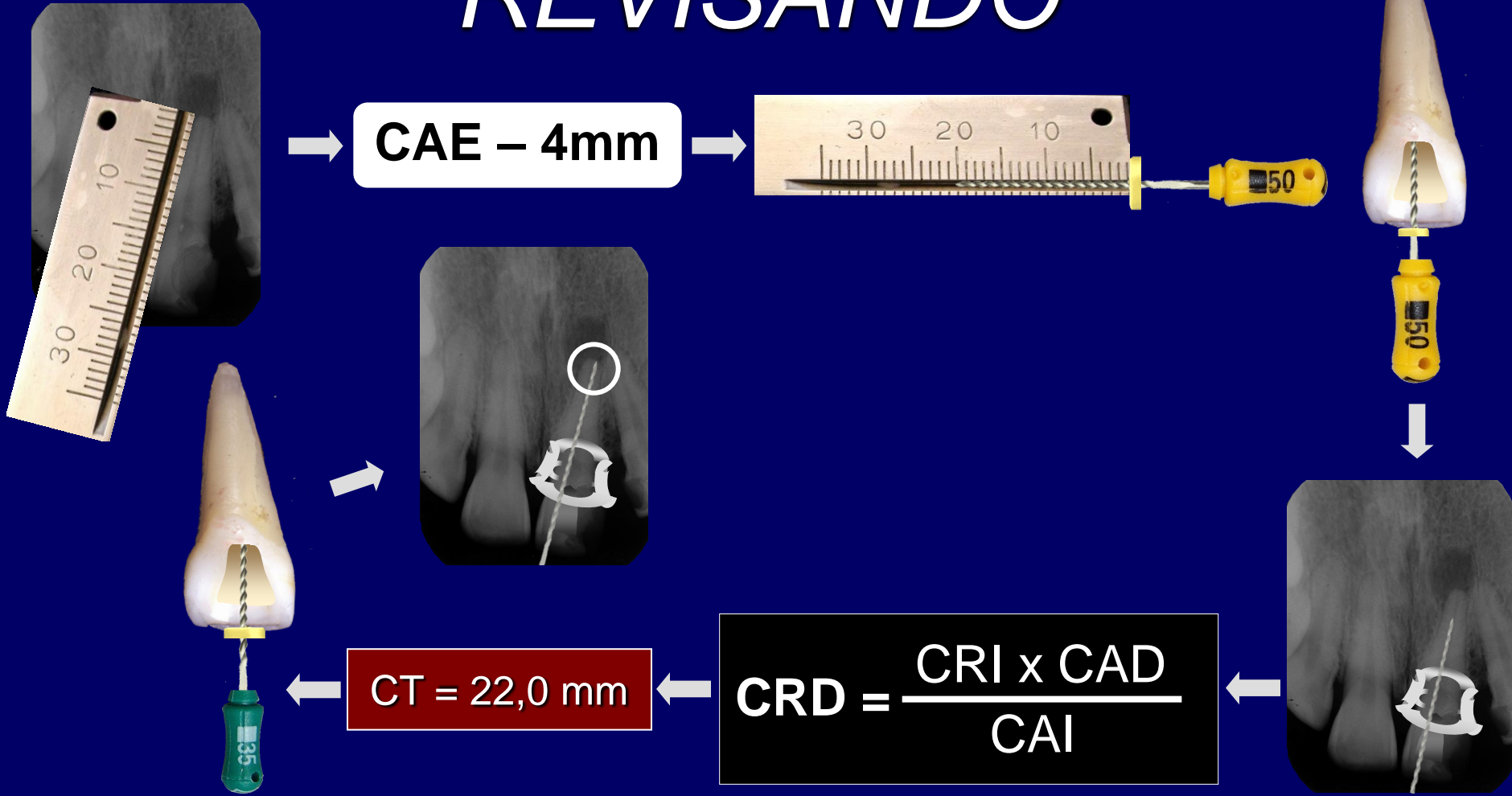


Comprimento de trabalho (CT)

Diâmetro anatômico (DA)

Início da instrumentação

REVISANDO

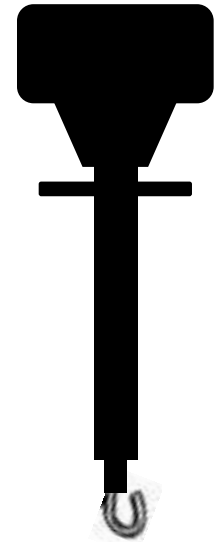


Odontometria eletrônica

MODELOS DE APARELHOS



Odontometria eletrônica



REFERÊNCIAS BIBLIOGRÁFICAS

- 1- De Deus QD. Endodontia, 5^o ed. Rio de Janeiro: Medsi; 1992. 565 p.
- 2- Leonardo MR. Endodontia. Tratamento de canais radiculares: Princípios técnicos e Biológicos, Vol. 2. São Paulo: Artes Médicas; 2005. 1491 p.
- 3- Camargo EJ, Zapata RO, Medeiros PL, Bramante CM, Bernardineli N, Garcia RB, Moraes IG, Duarte MAH. Influence of preflaring on the accuracy of length determination with four electronic apex locators. J Endod. v. 35, n 9, p. 1300-0, 2009.
- 4- Vieyra JP, Acosta J, Mondaca JM. Comparison of working length determination with radiographs and two electronic apex locators. Int Endod J. v.43, n.1, p. 16-20, 2010.
- 5- Guise GM, Goodell GG, Imamura GM. In vitro comparison of three electronic apex locators. J Endod. v.36, n.2, p.279-81, 2010.