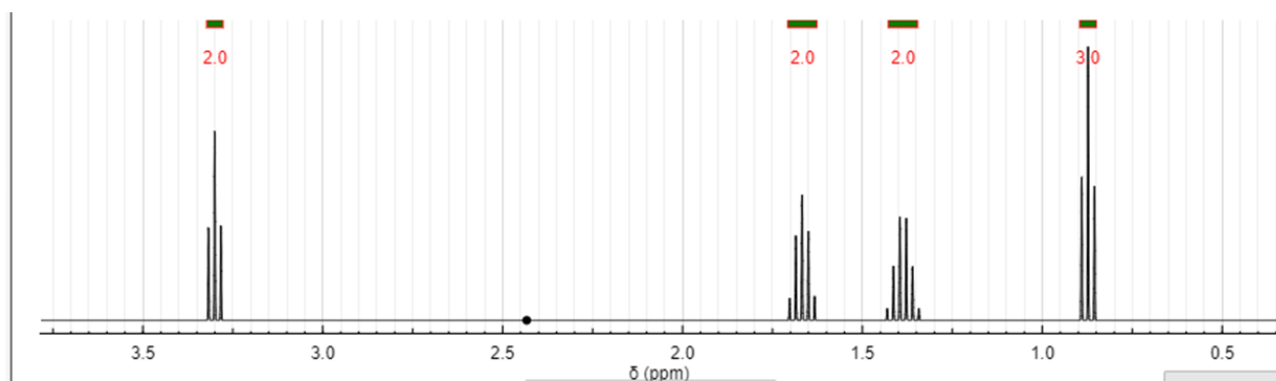
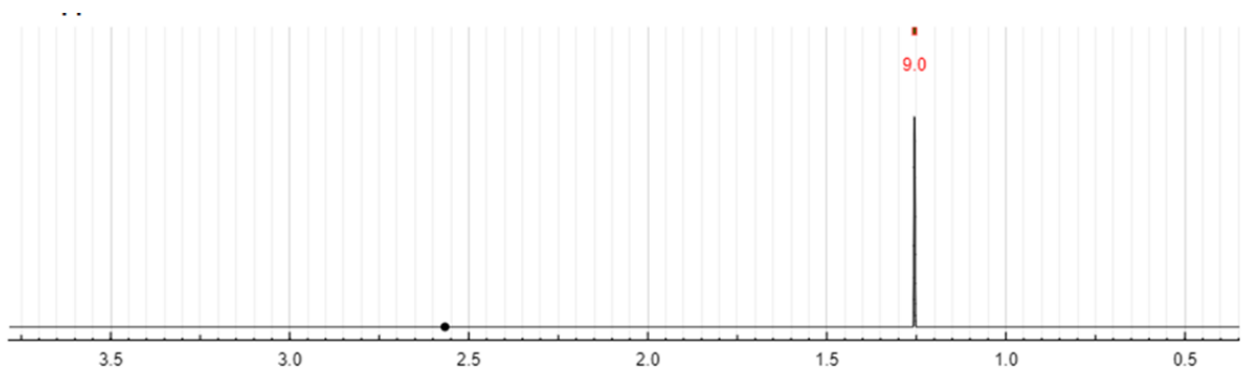
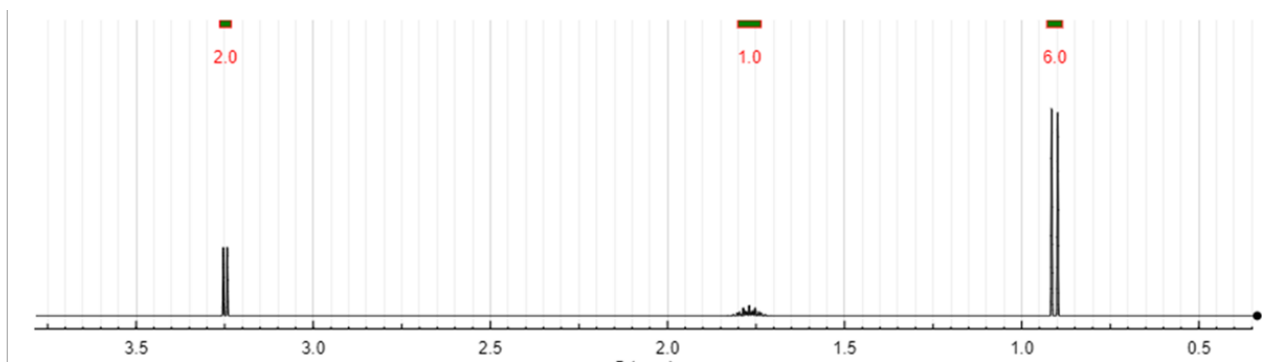
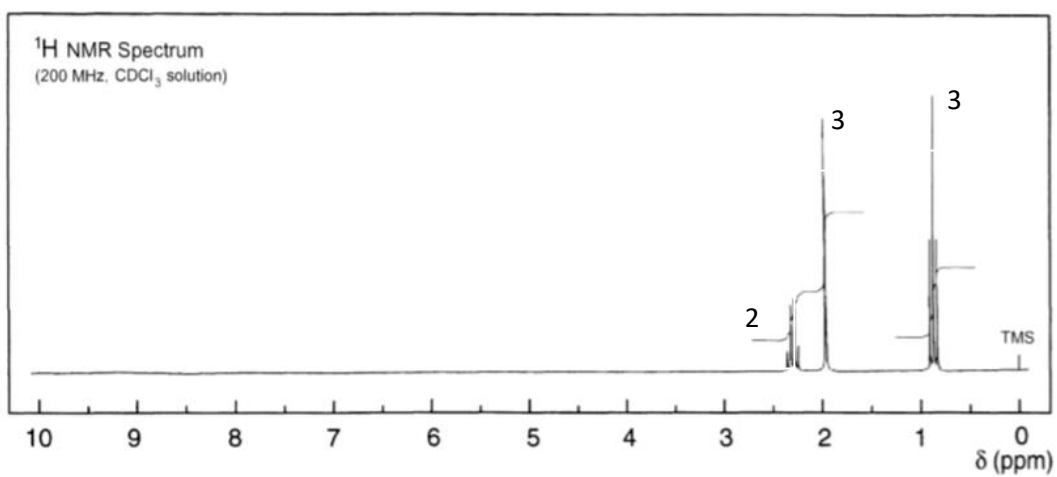
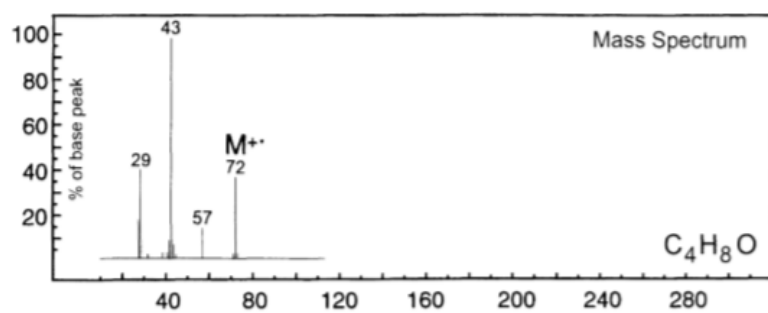
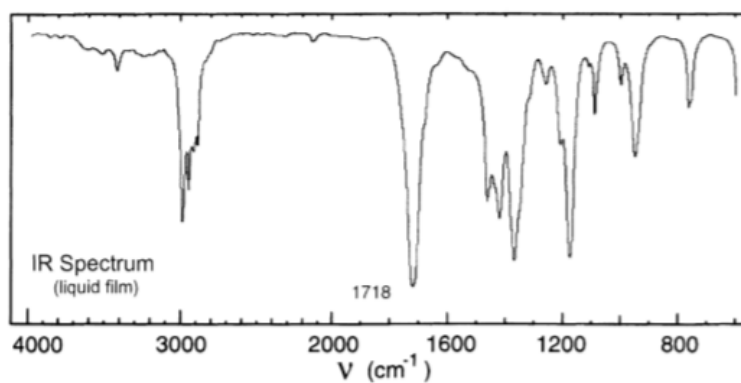


QFL0341 Problemas de determinação estrutural

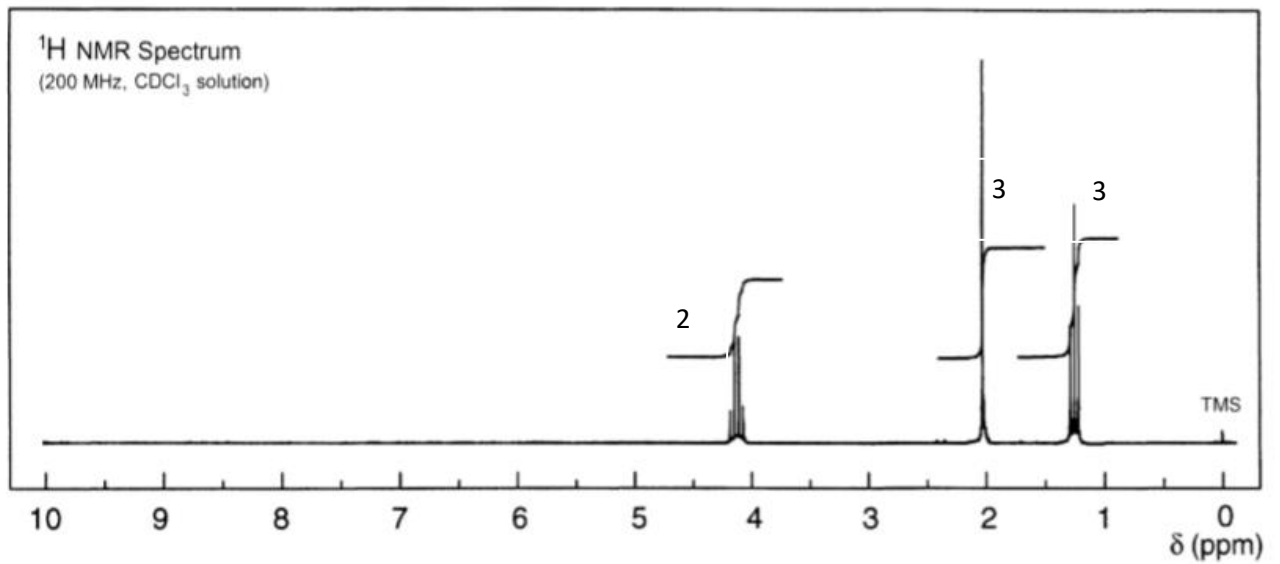
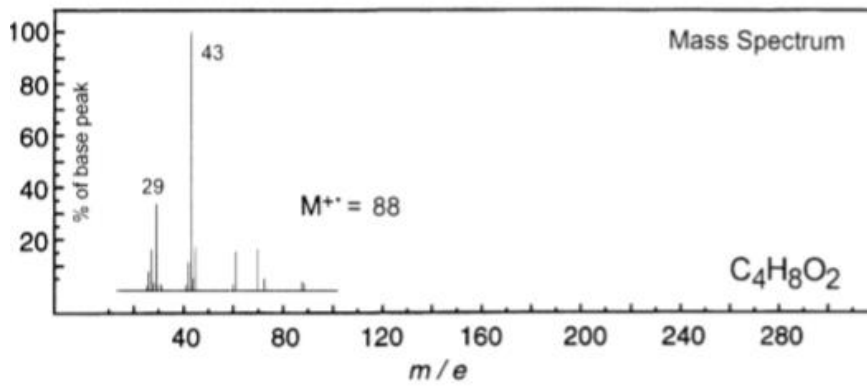
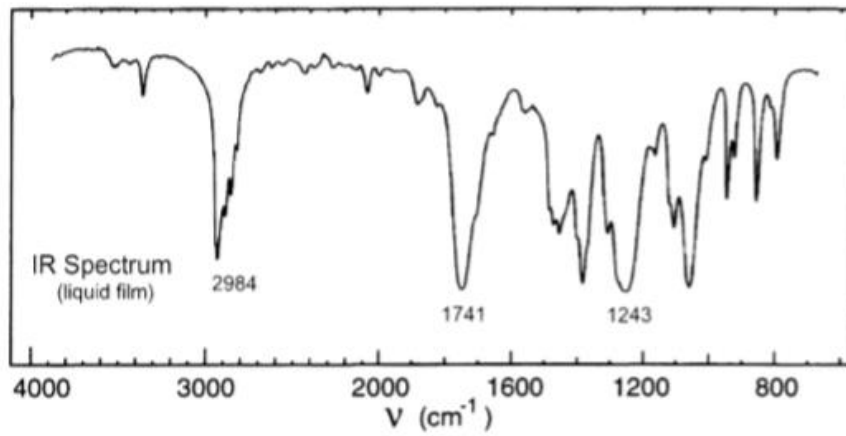
- 1) O espectro do butanol e de seus dois isômeros estão representados abaixo. Identifique os isômeros e interprete os sinais do RMN. Respostas: álcool isobutílico, terc-butanol e n-butanol (de cima para baixo).



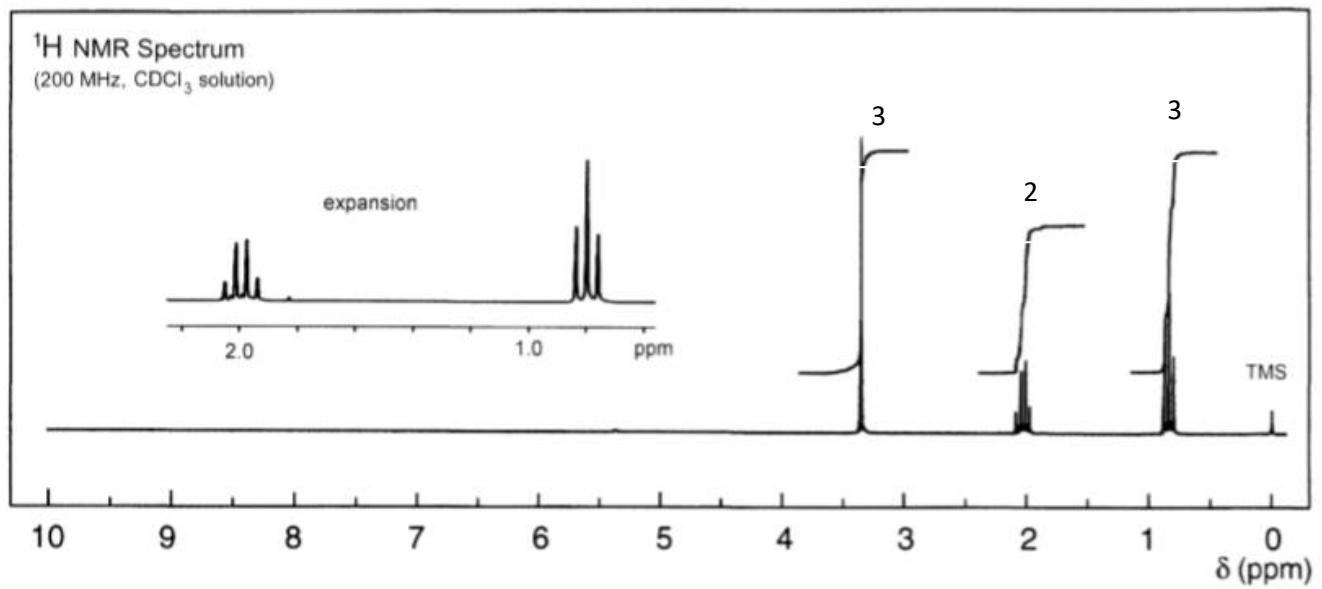
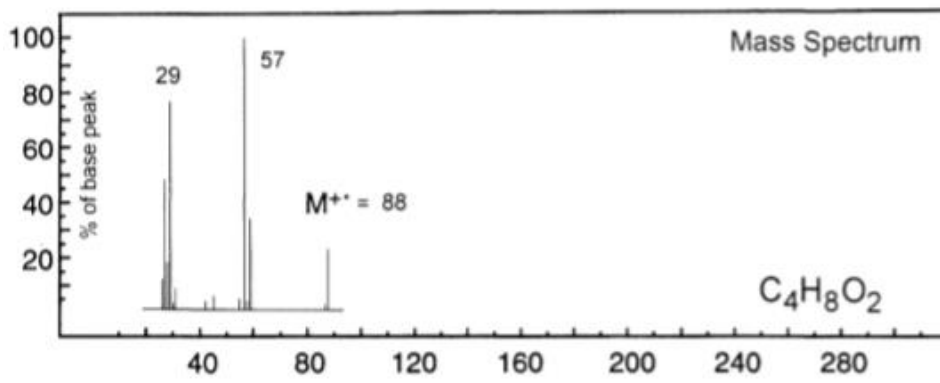
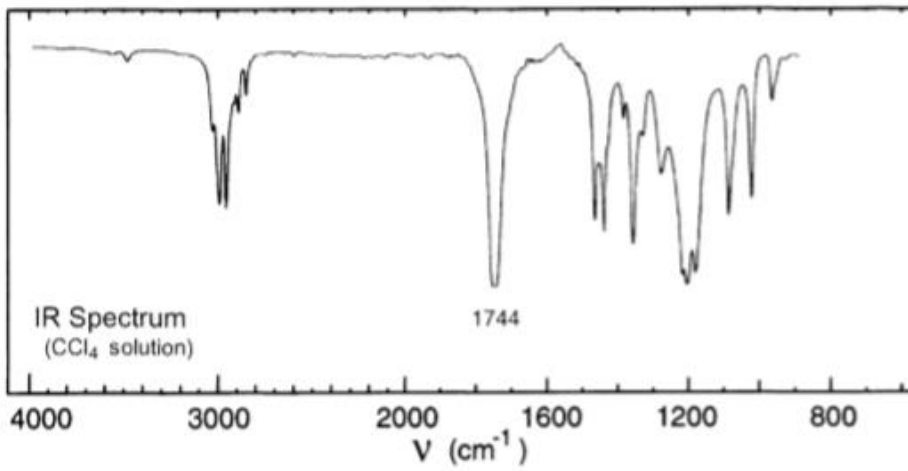
- 2) Determine a estrutura dos seguintes compostos a partir dos seus espectros:
2.1) (resposta: vide problema 10 da lista 11)



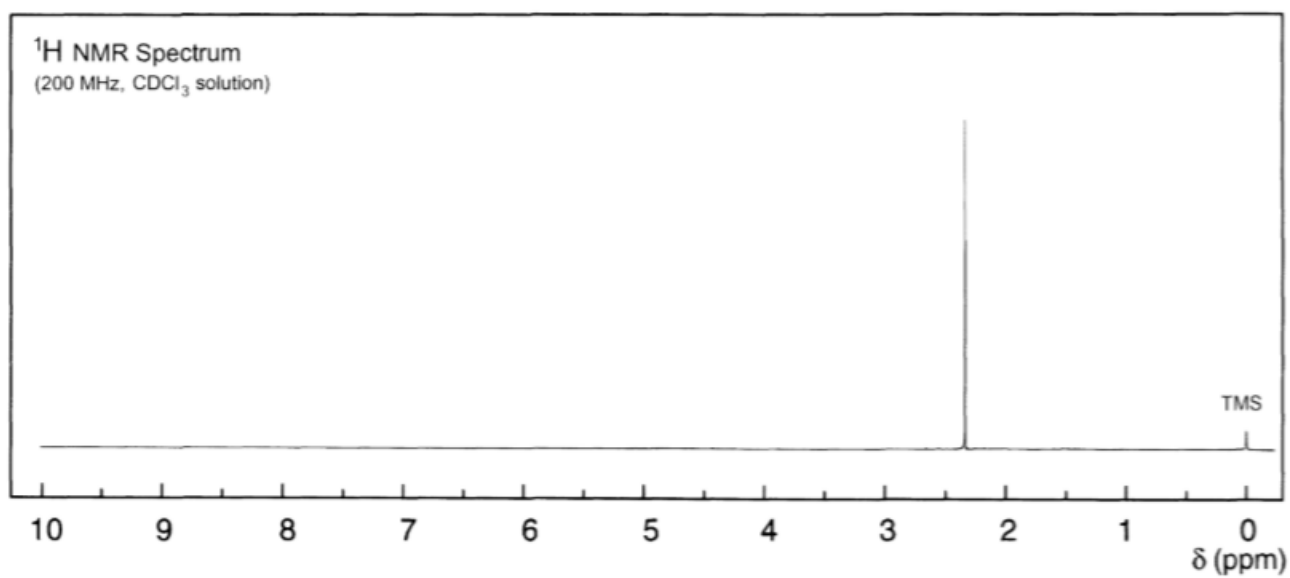
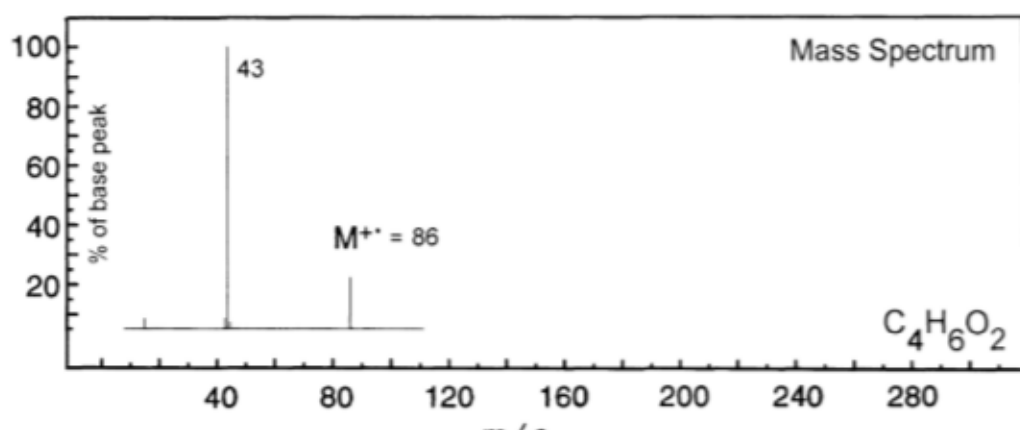
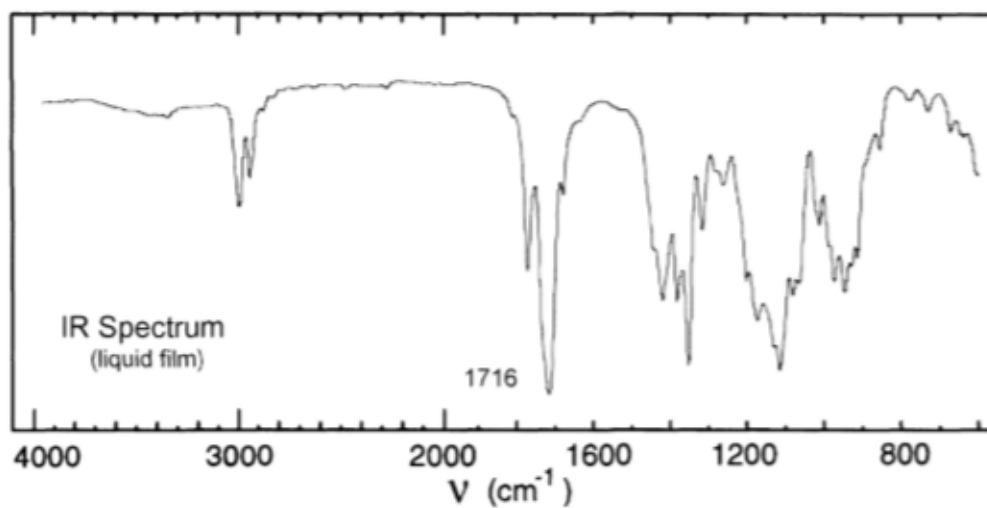
2.2) (solução: vide problema 1 da lista 11)



2.3) (solução: propionato de metila)



2.4) 2,3-butanodiona



2.5) anisol

