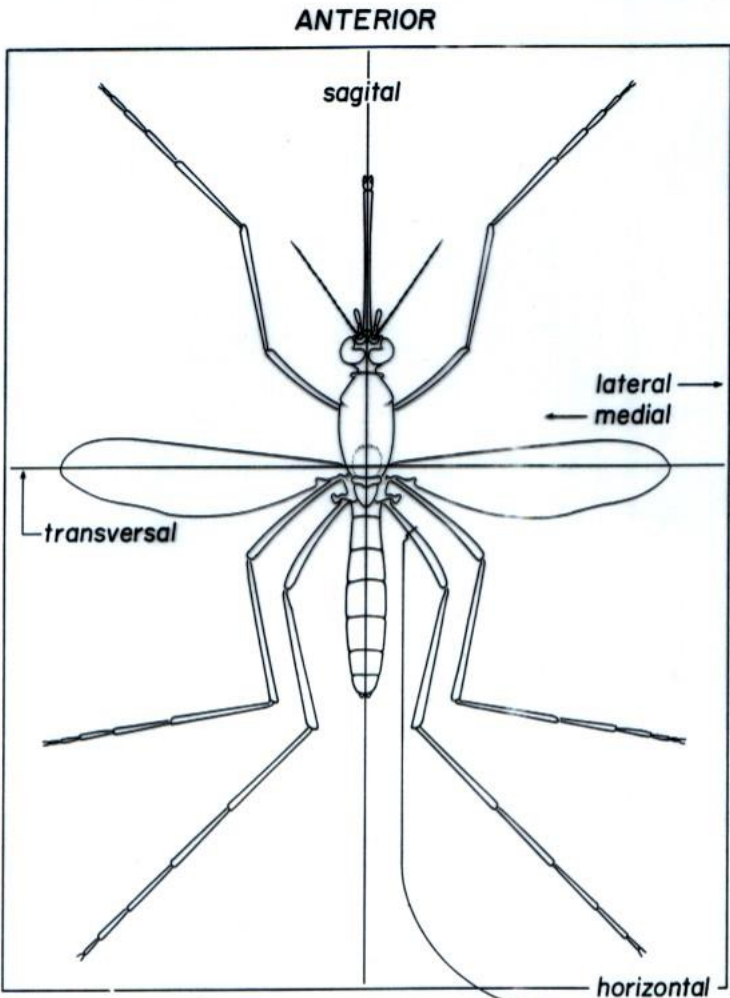


**MORFOLOGIA EXTERNA  
DO ADULTO - CULICIDAE**

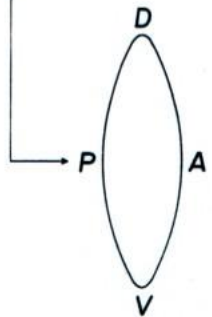


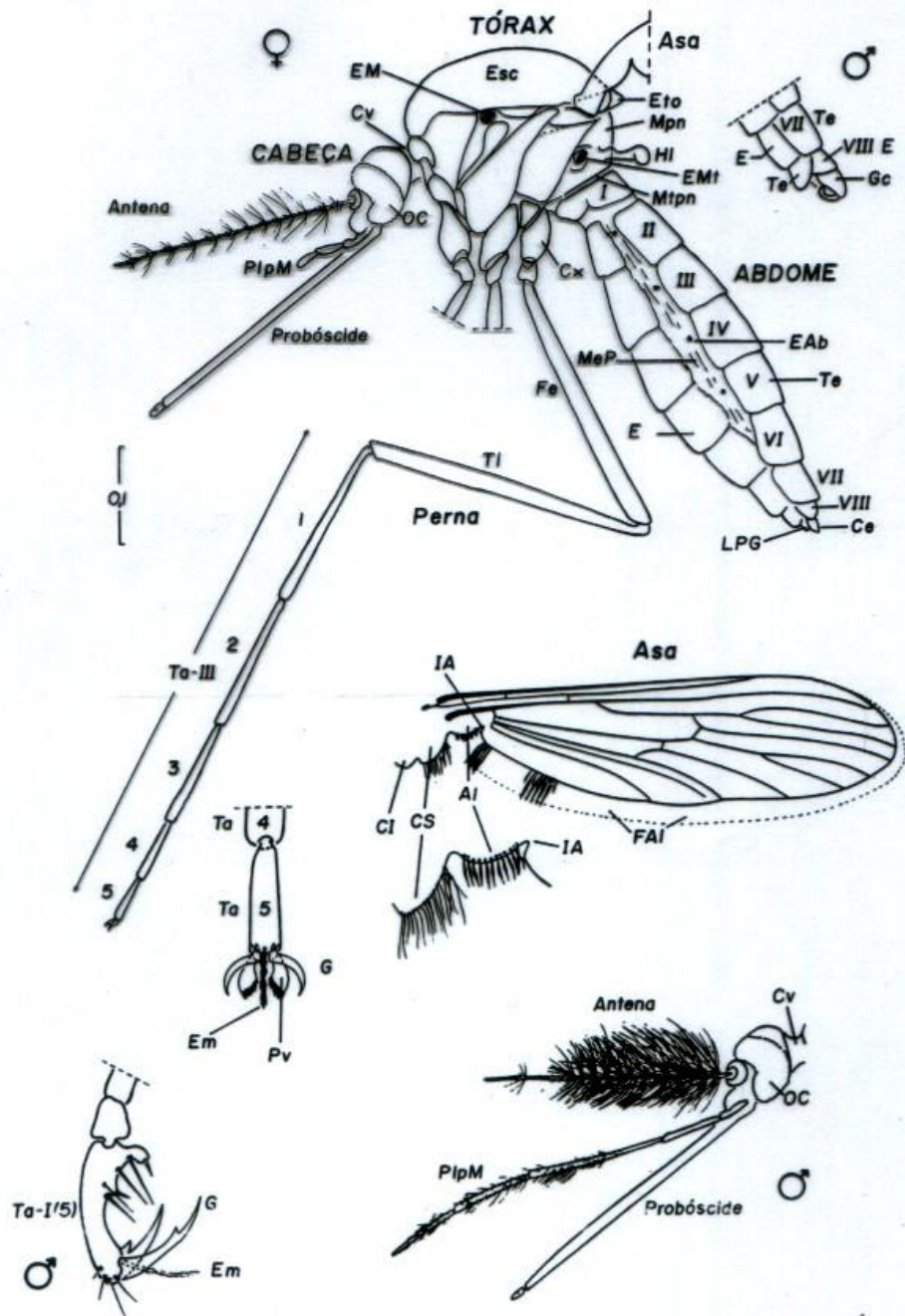
**Fontes: Forattini (1996); Harbach (1996)**

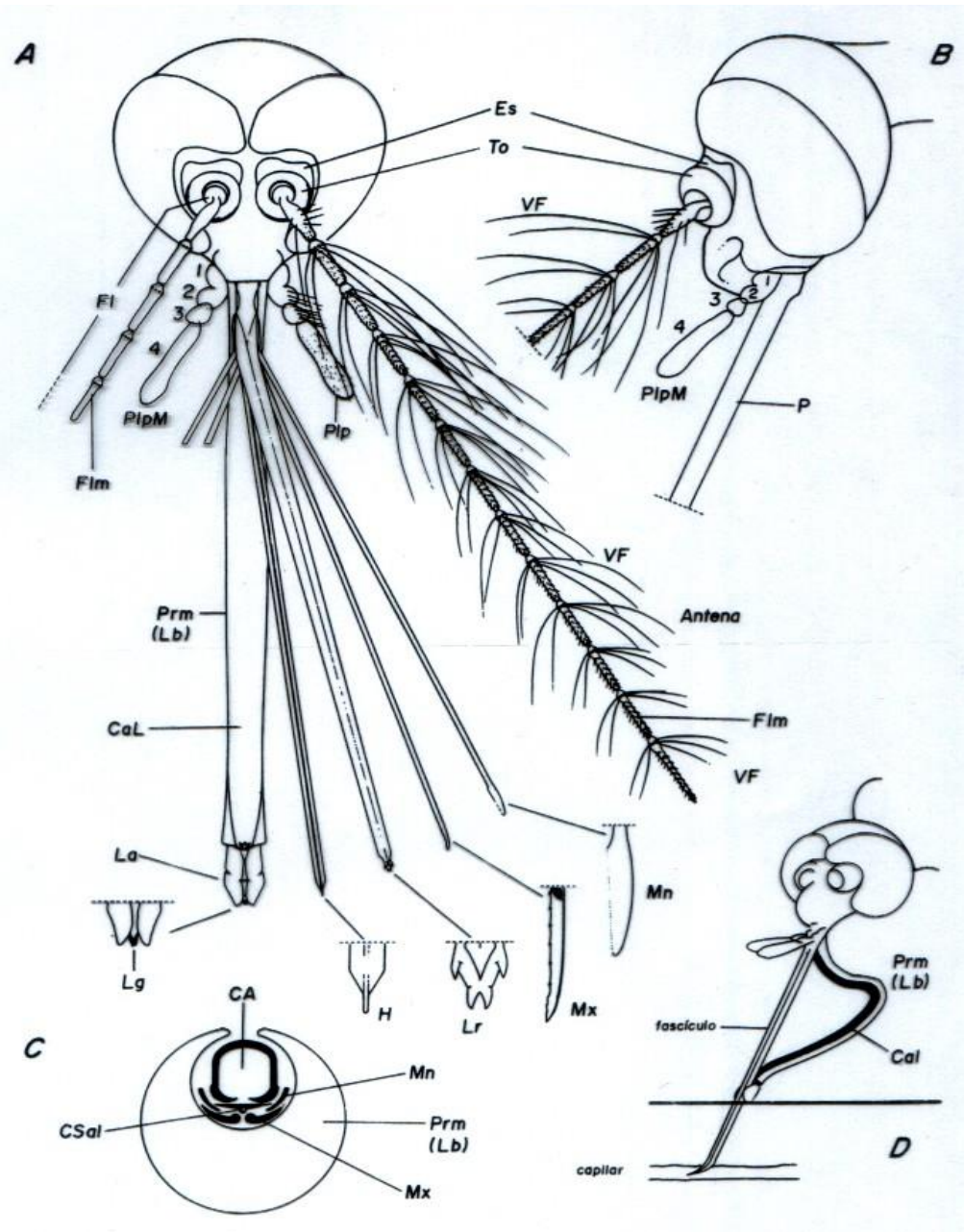
**Preparado por Maria Anice Mureb Sallum, FSP-USP**

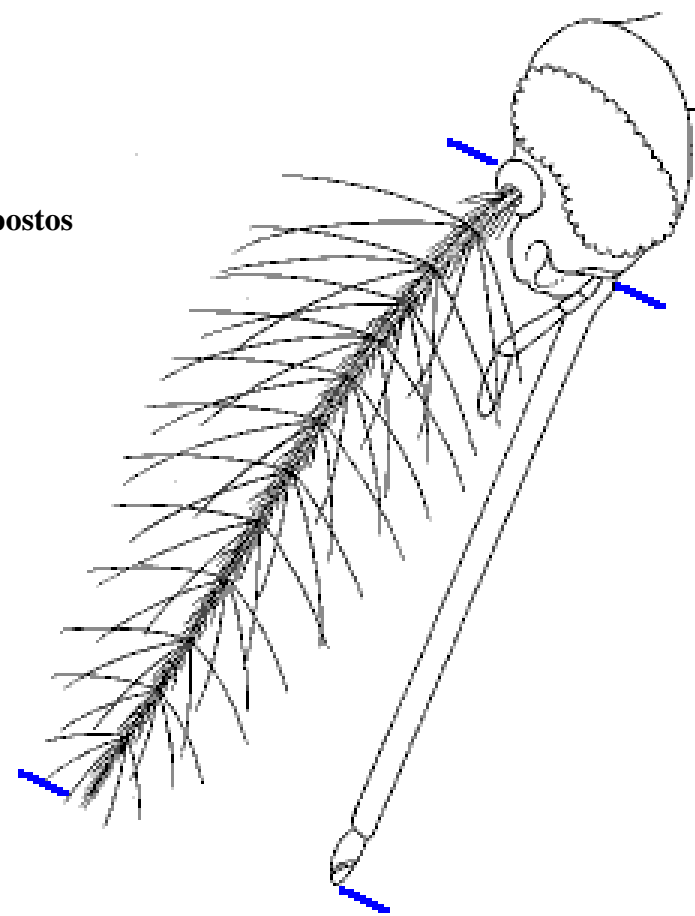
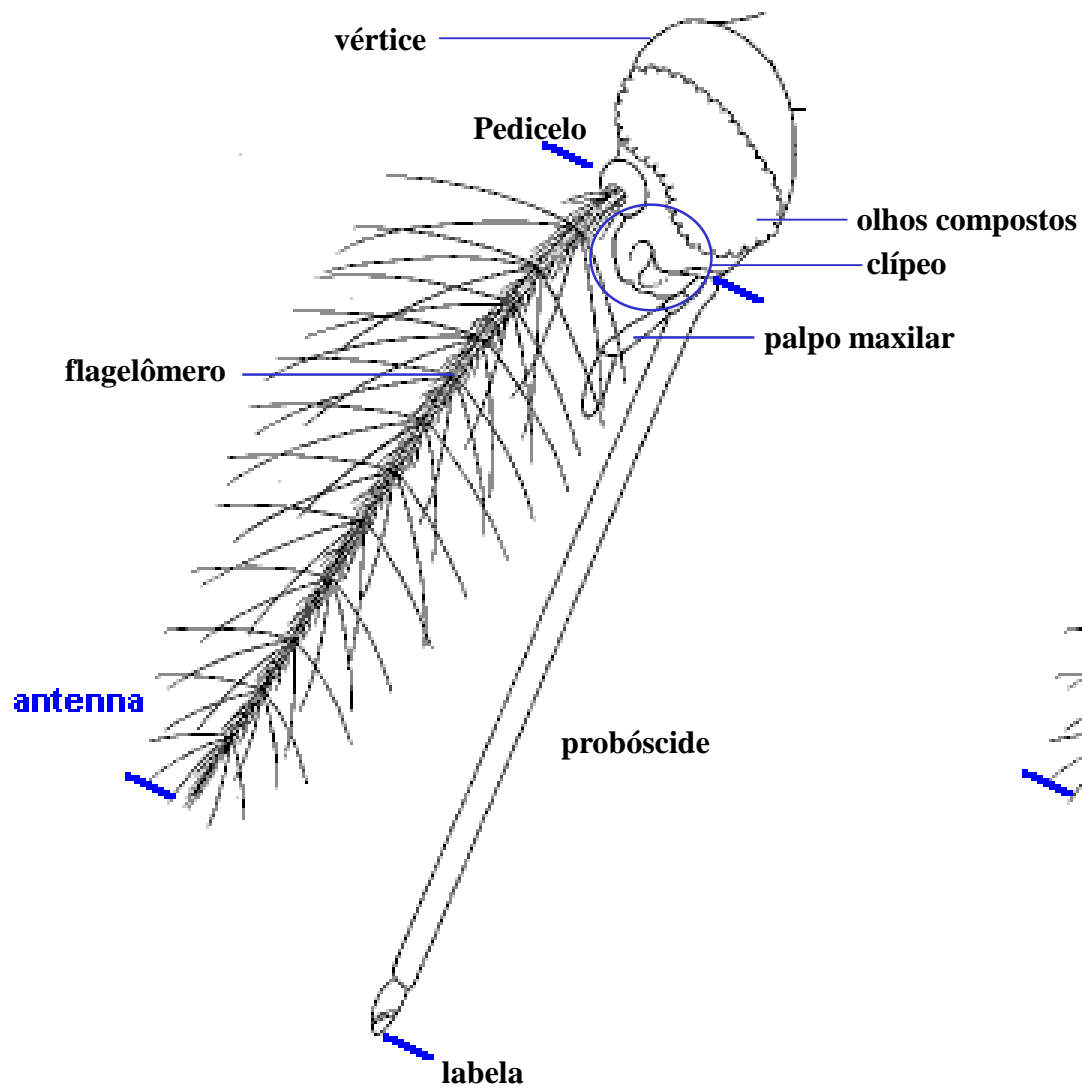


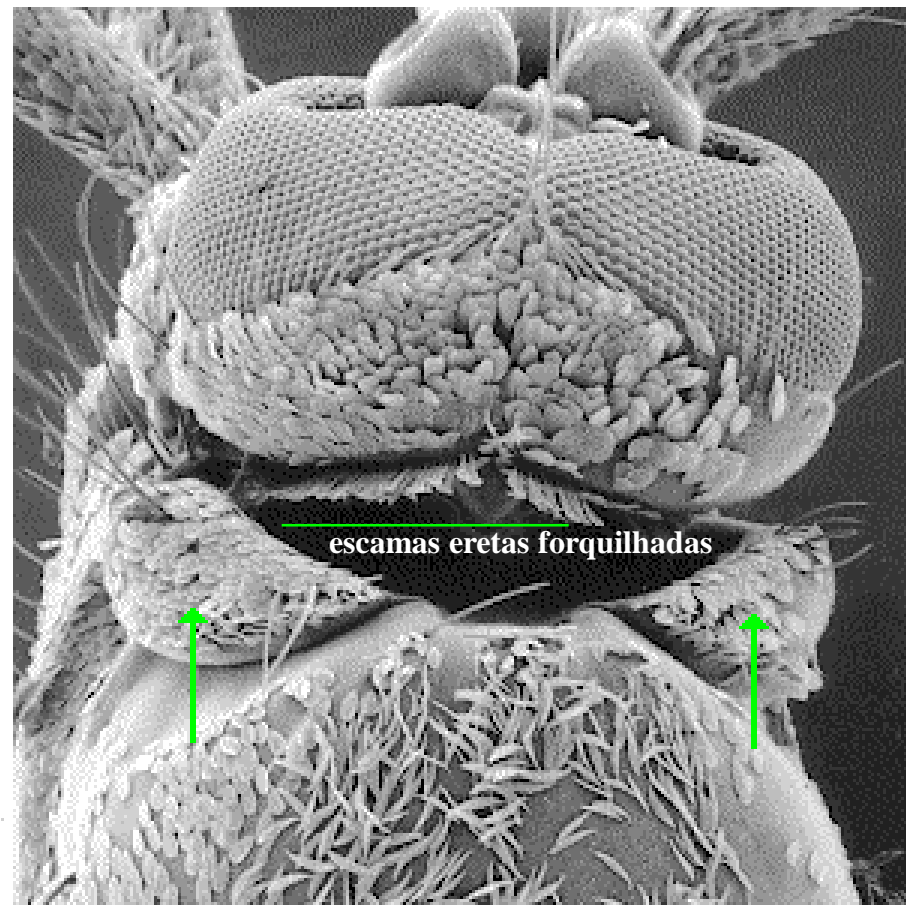
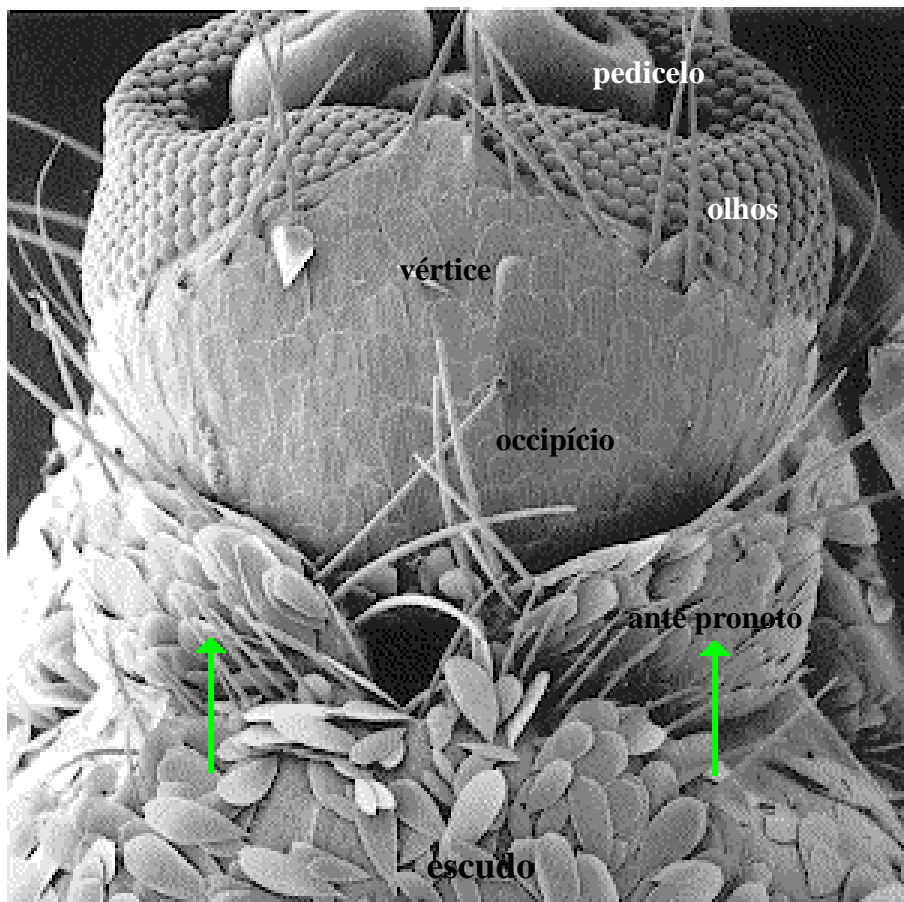
POSTERIOR











escamas eretas forquilhadas

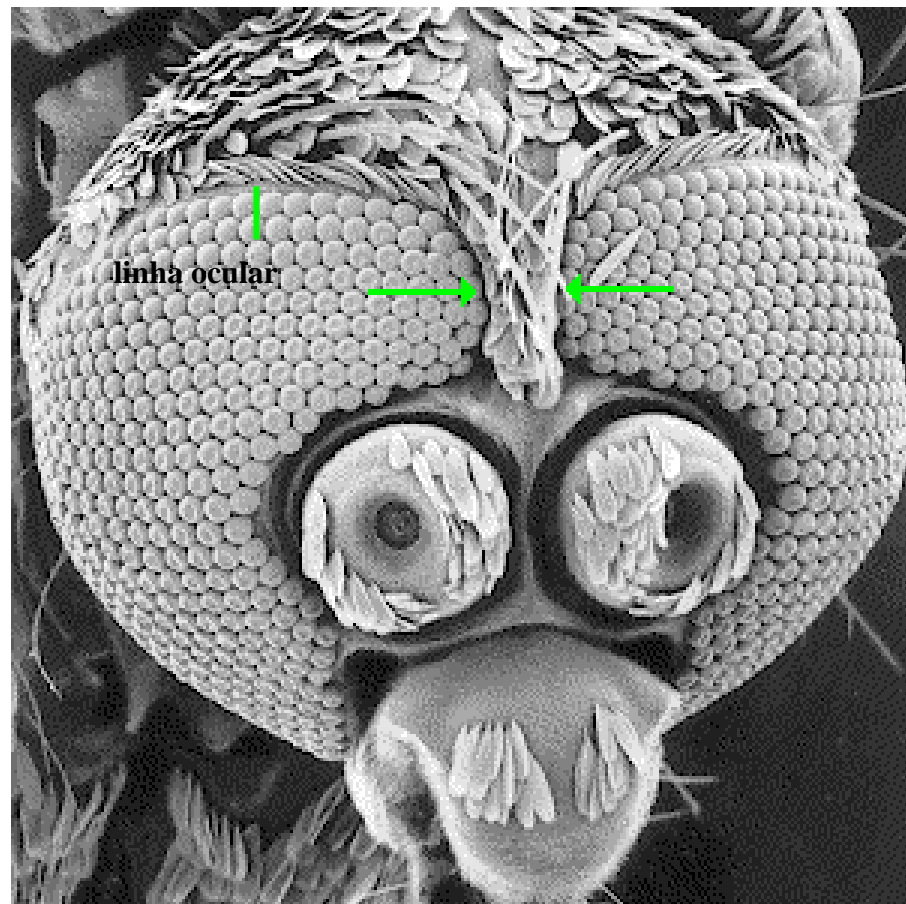
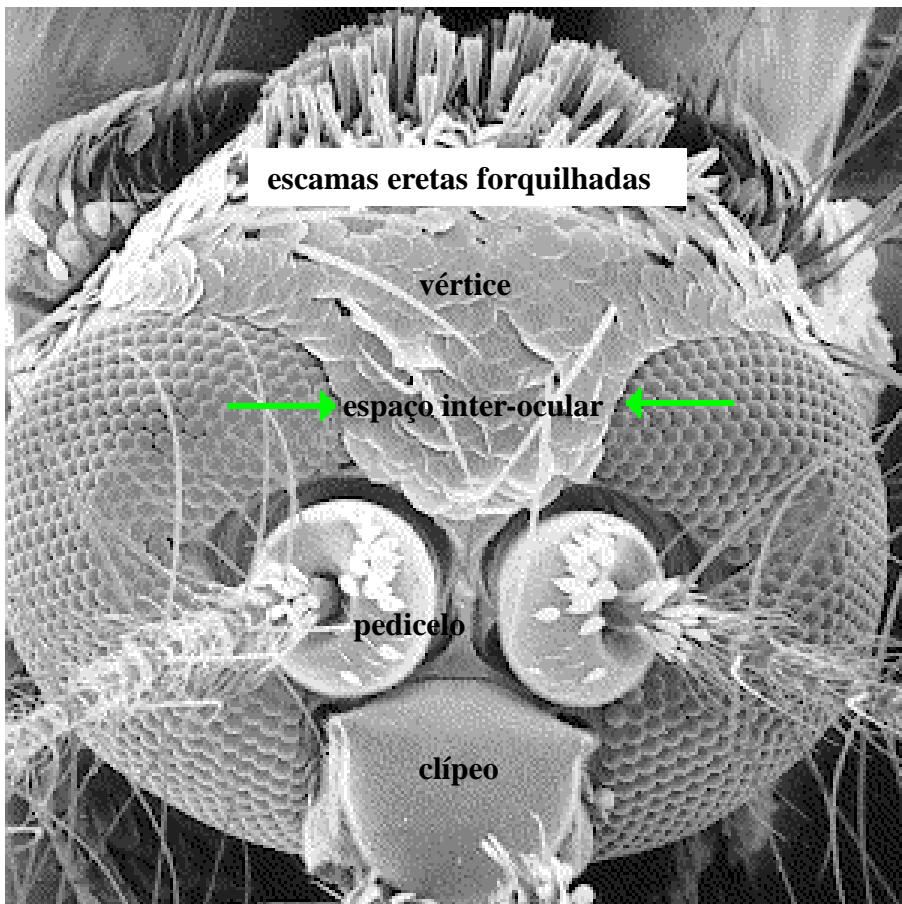
vértice

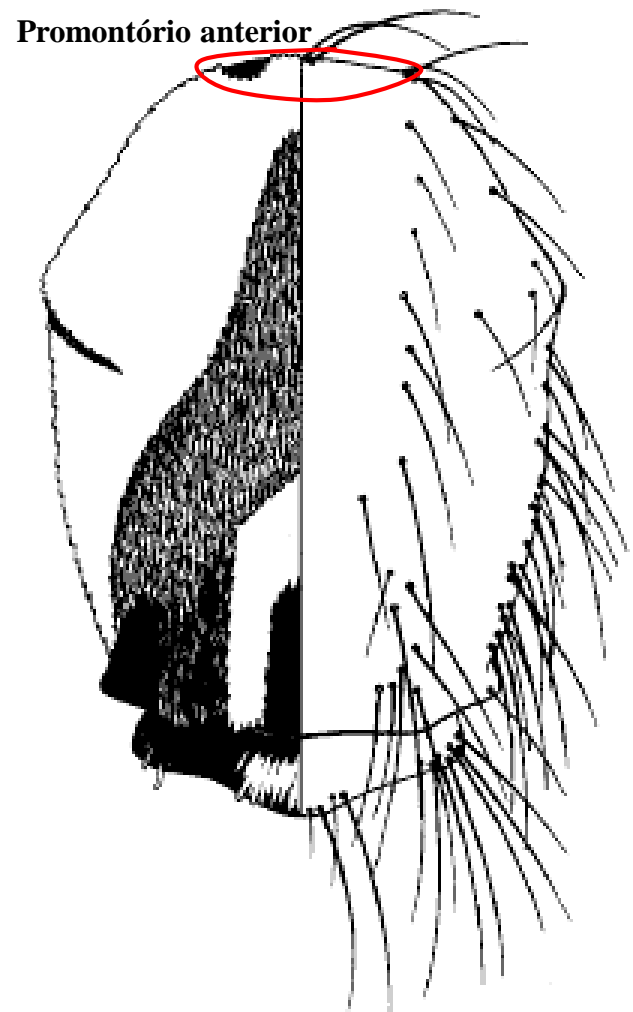
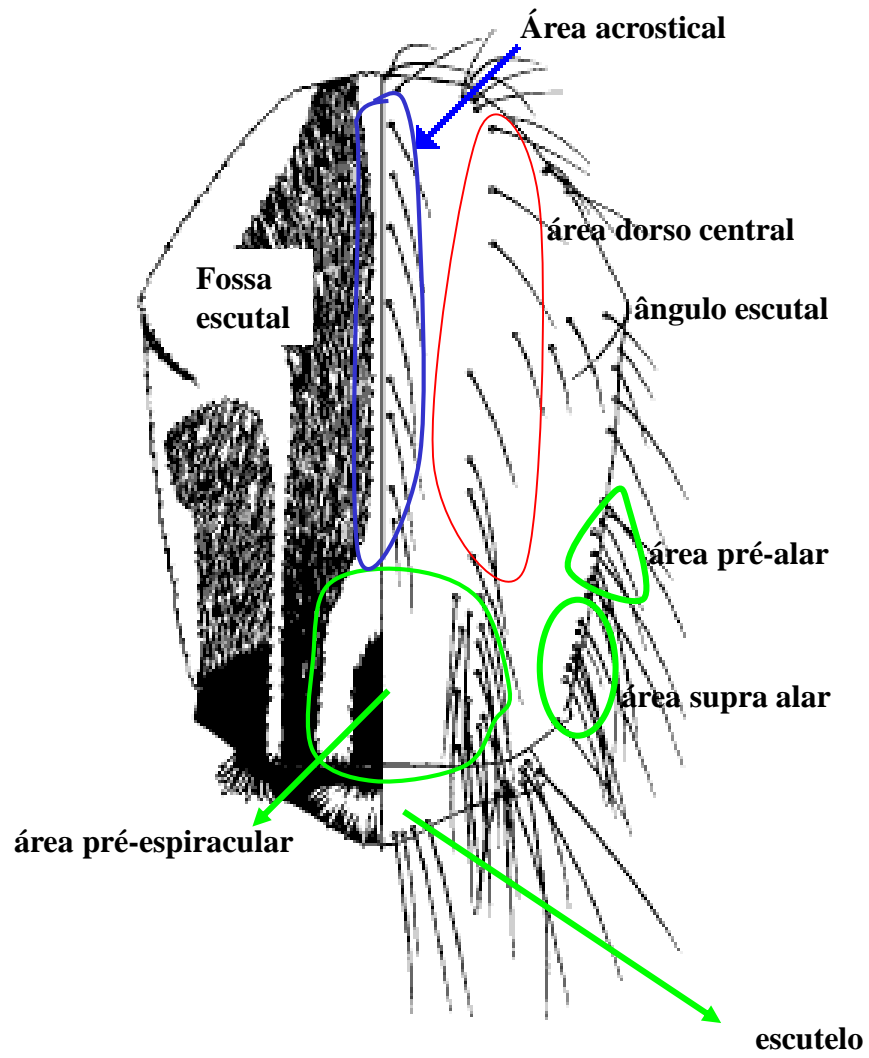
espaço inter-ocular

pedicelo

clípeo

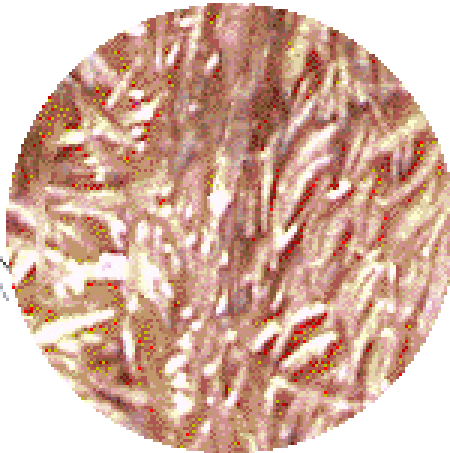
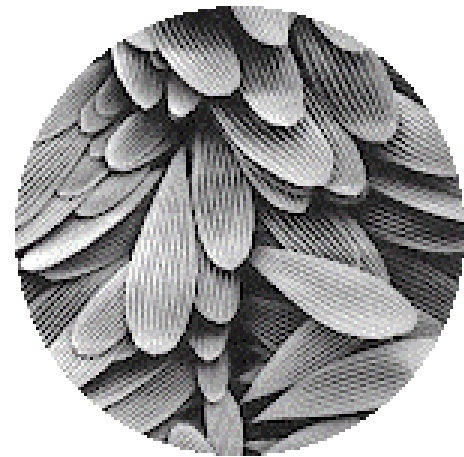
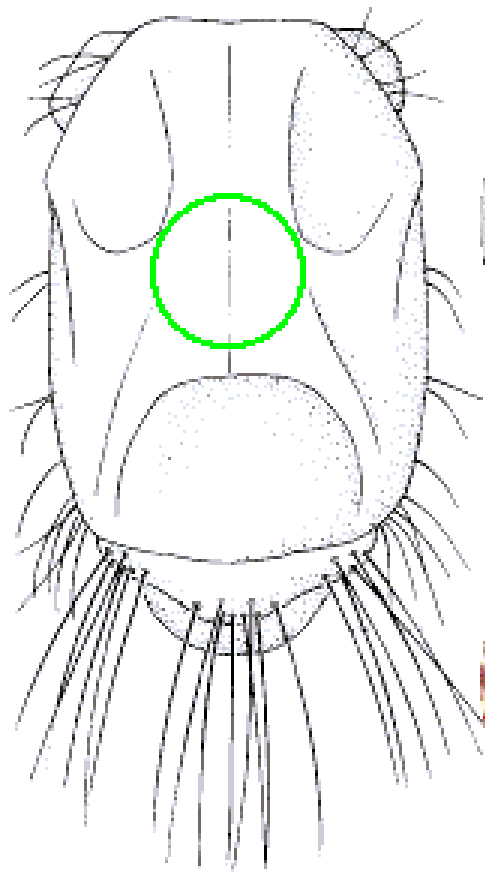
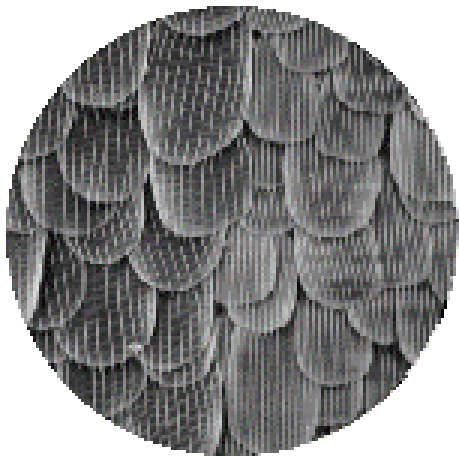
linha ocular





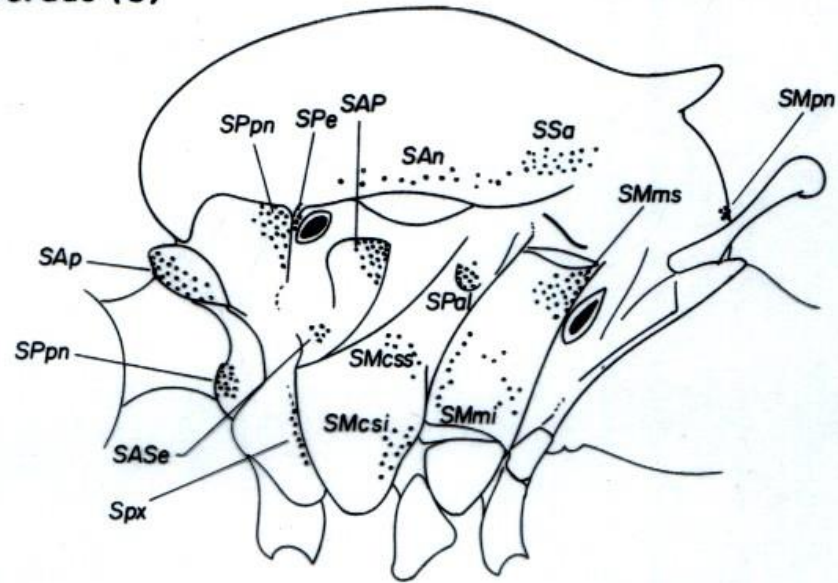
**ESCUDO, VISTA DORSAL**



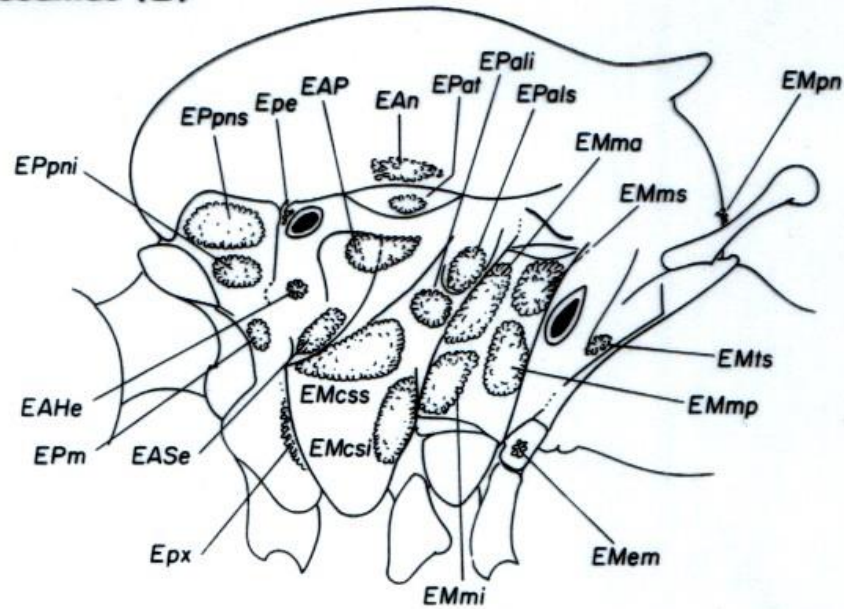


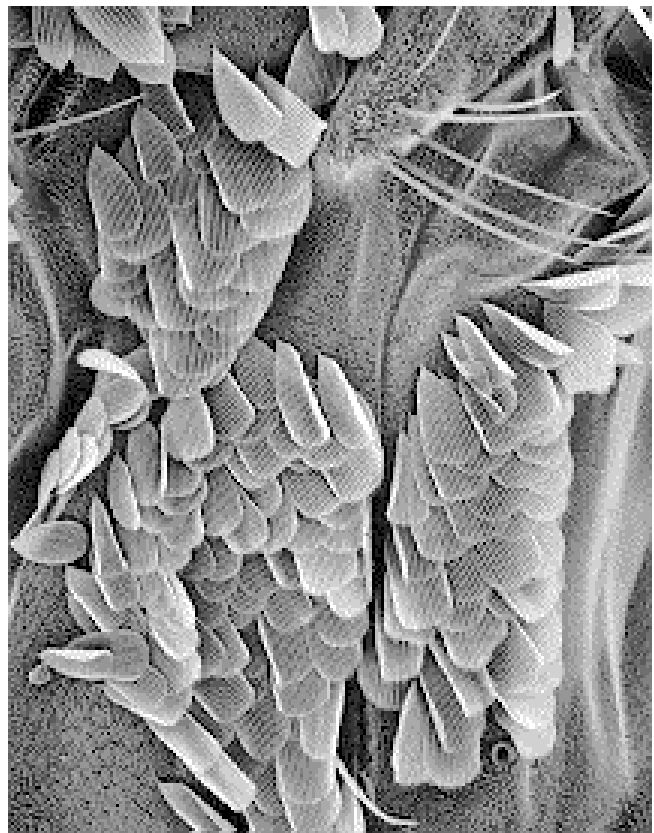
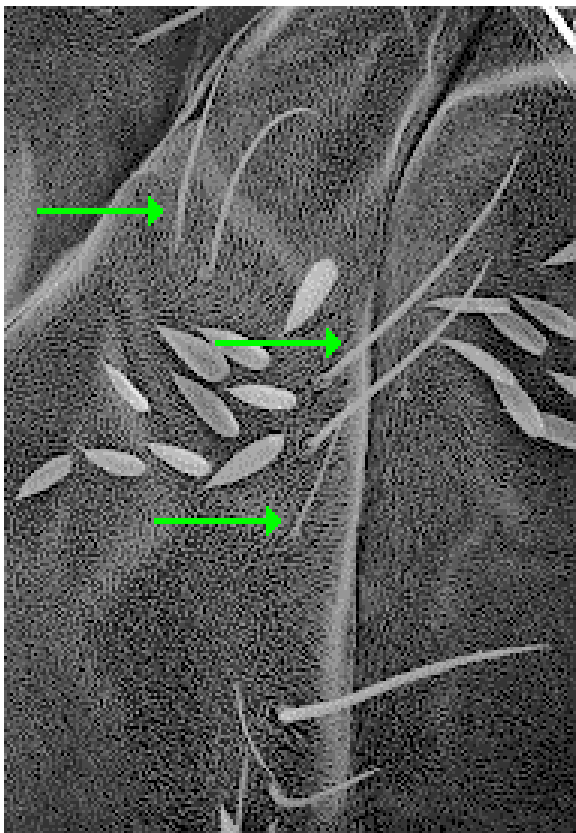
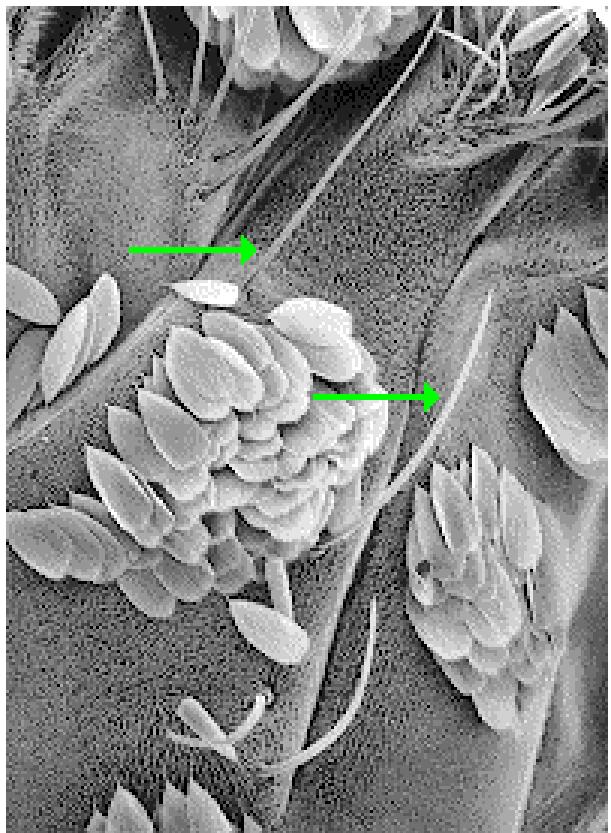
**TIPOS DE ESCAMAS NO ESCUDO**

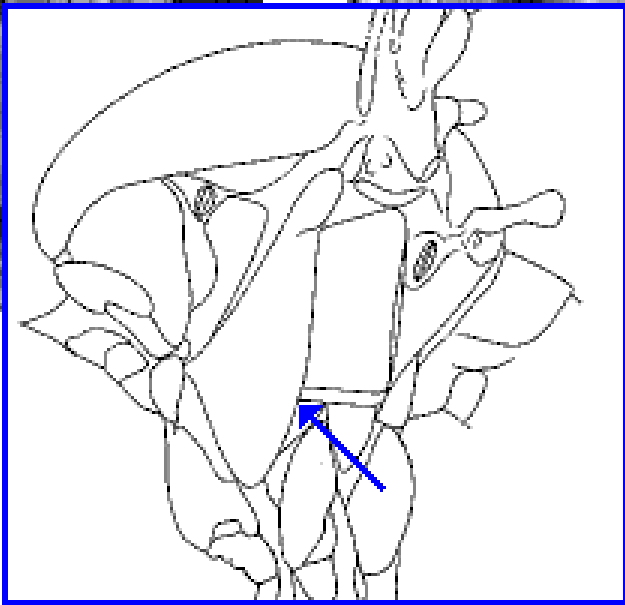
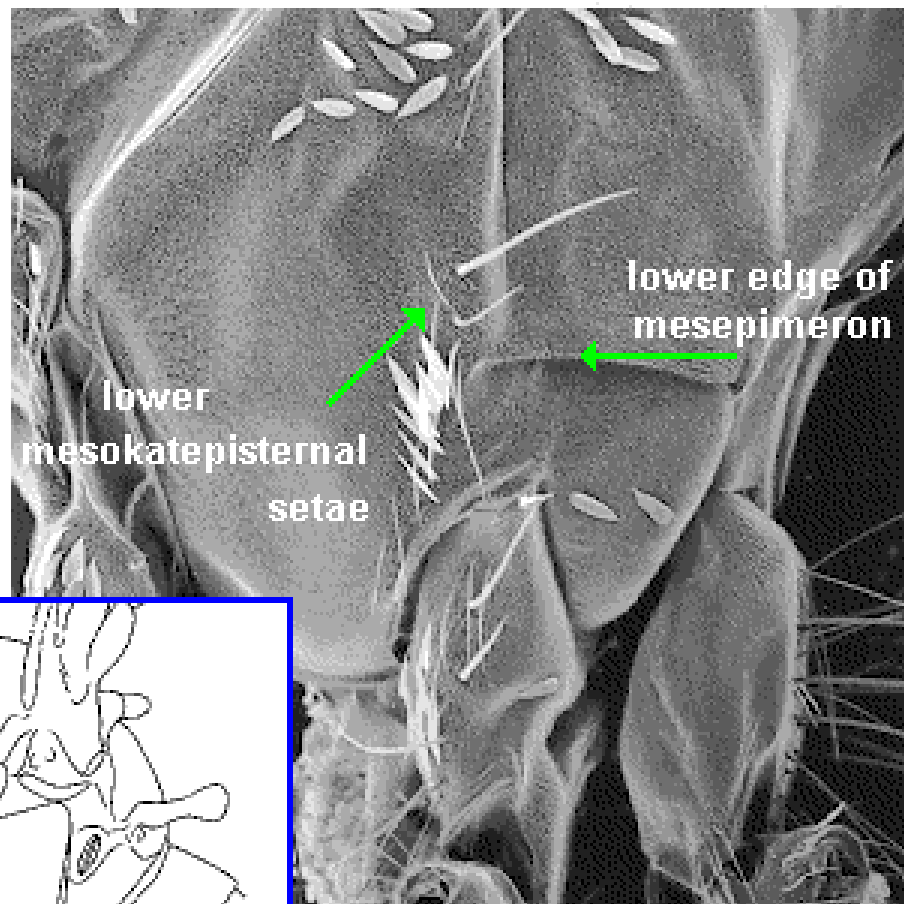
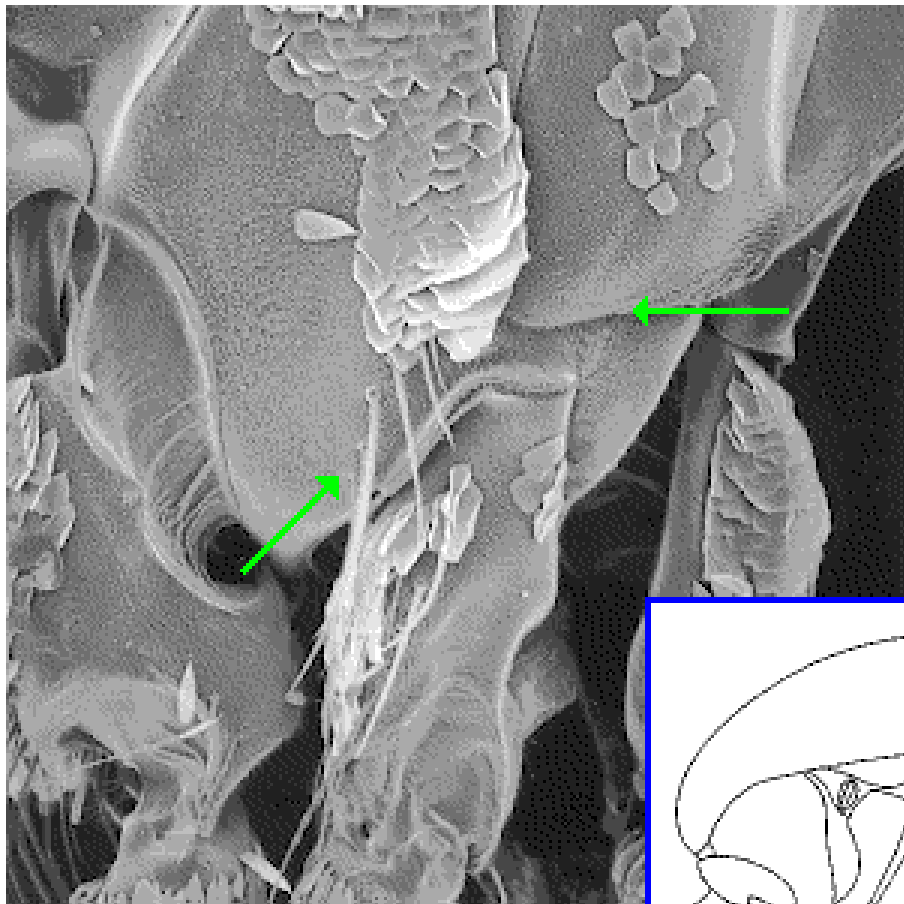
## Cerdas (S)

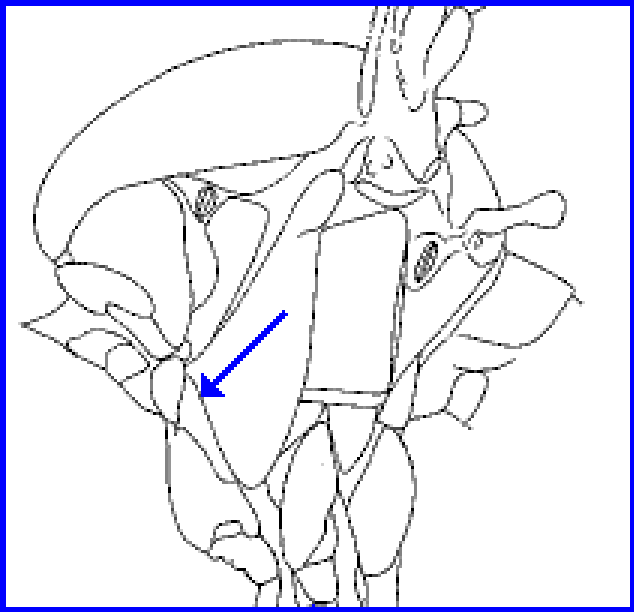
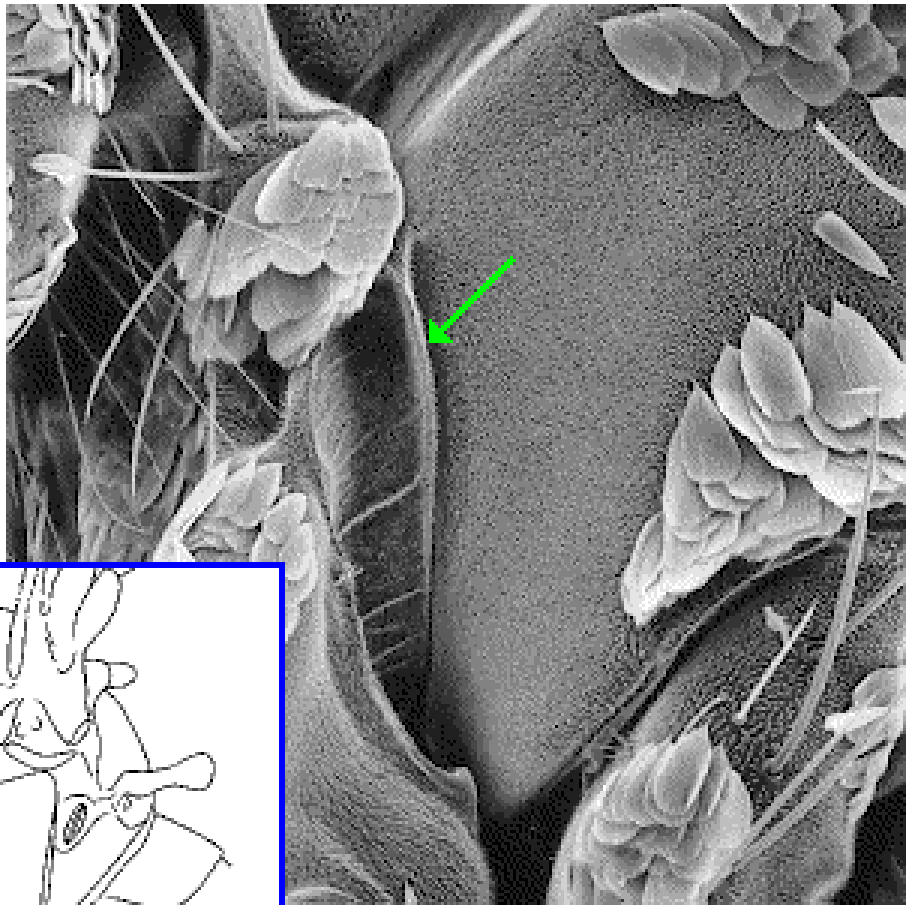
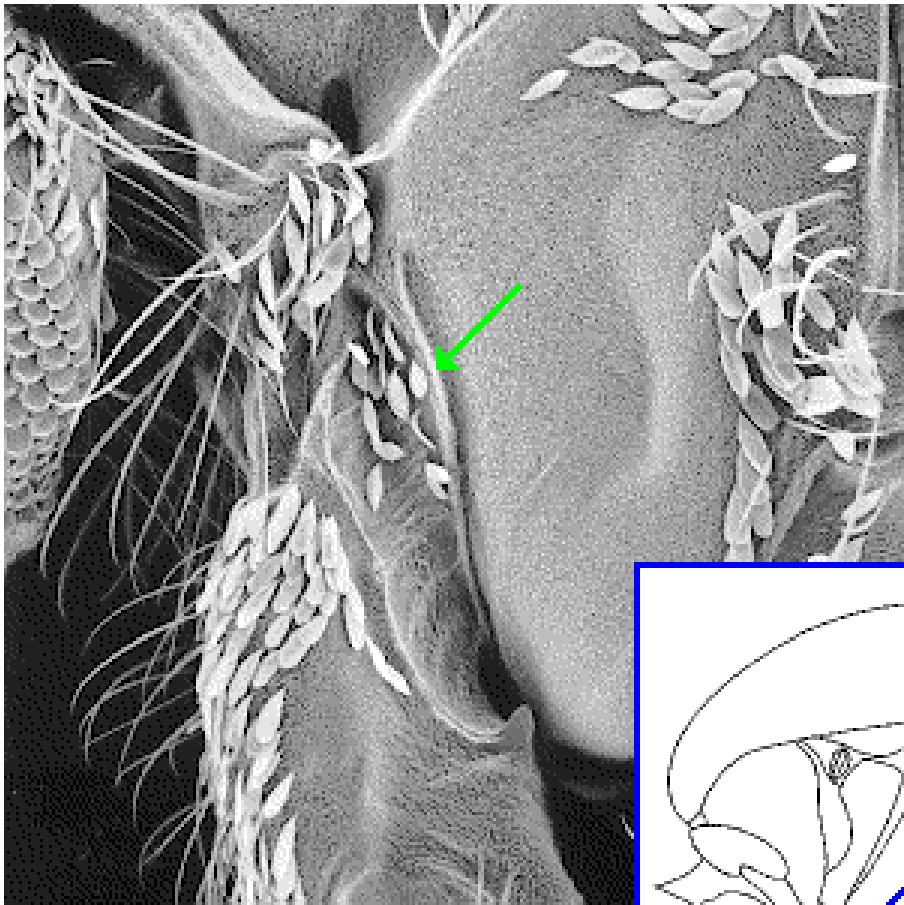


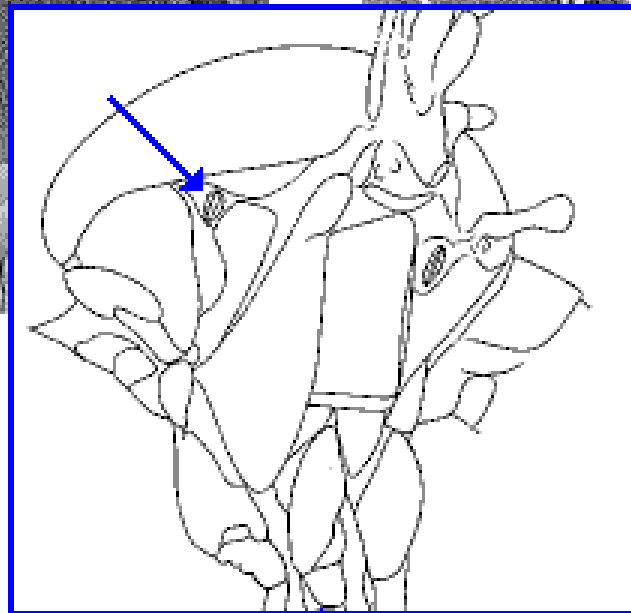
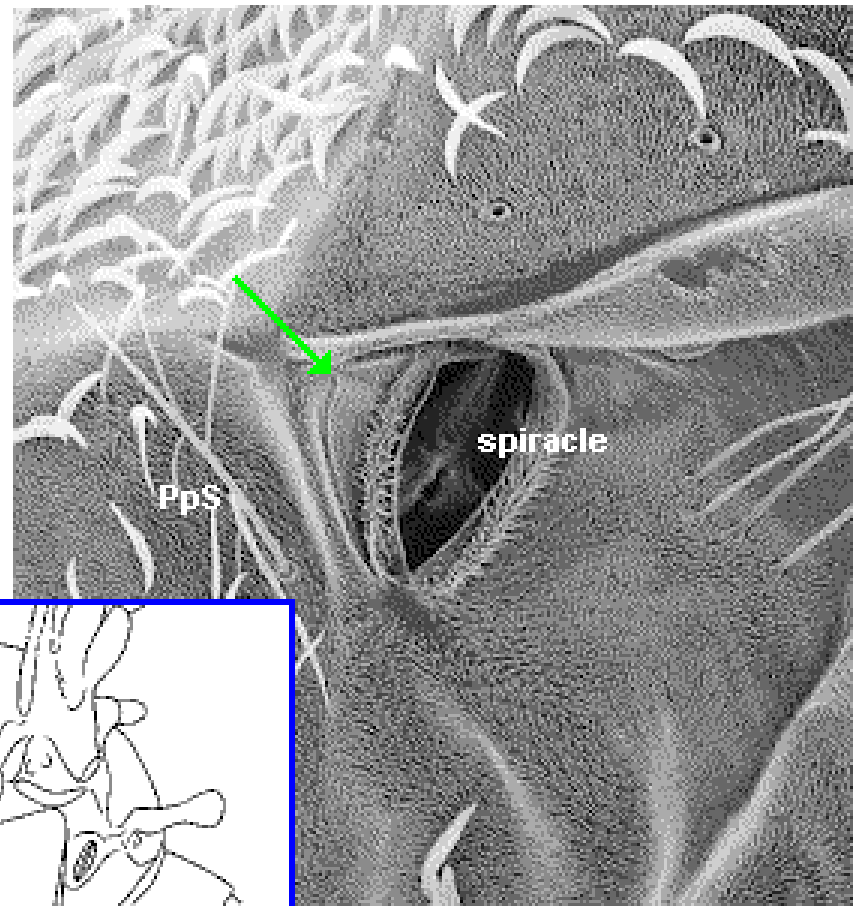
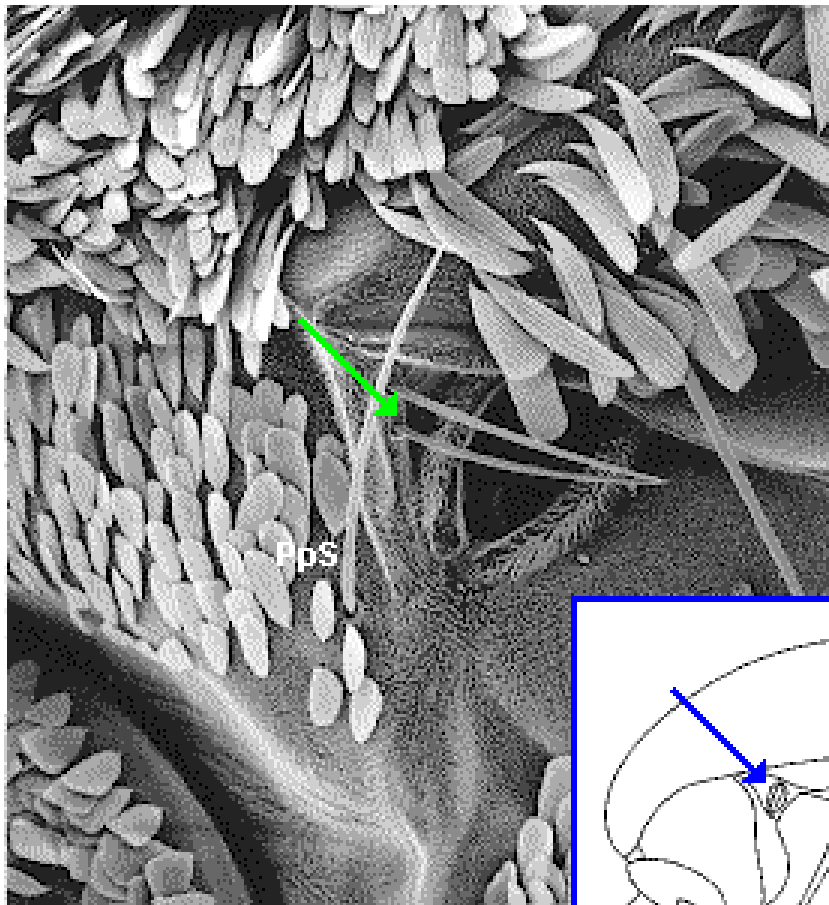
## Escamas (E)

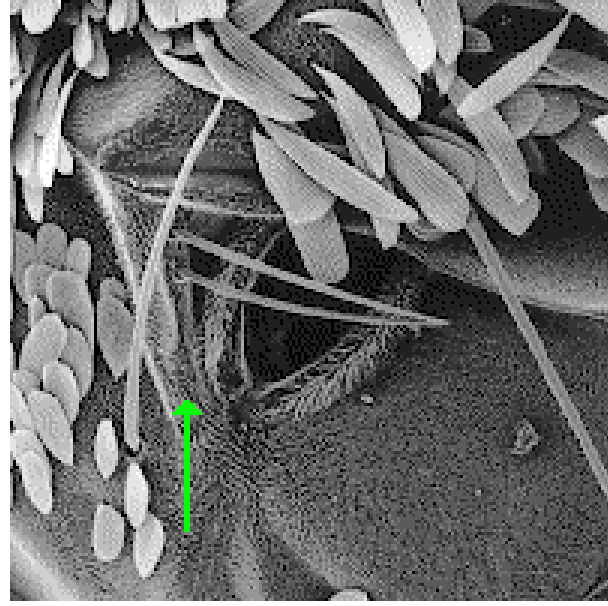
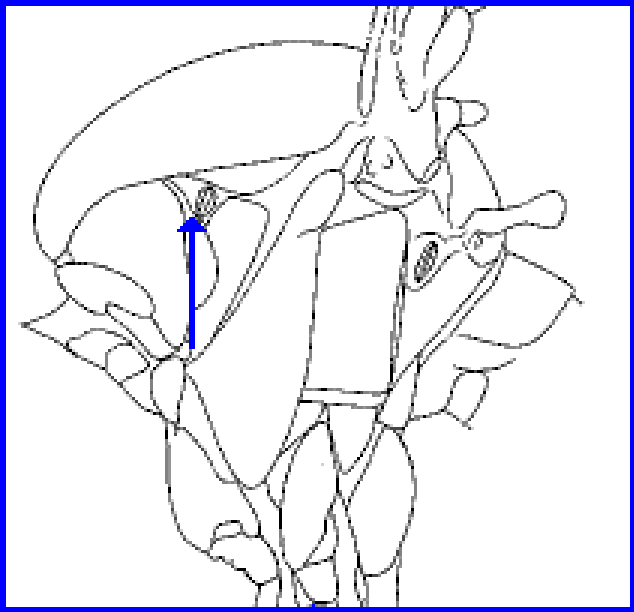
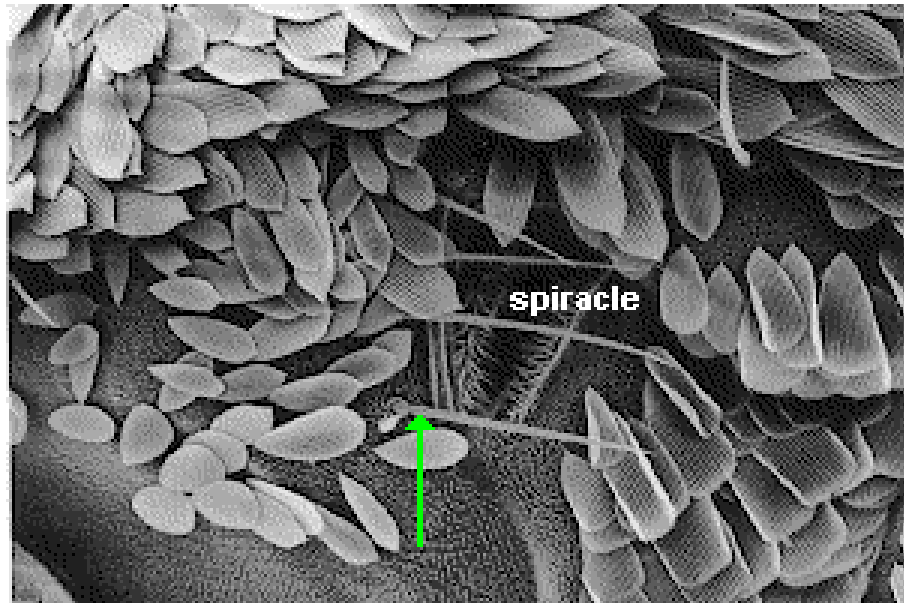
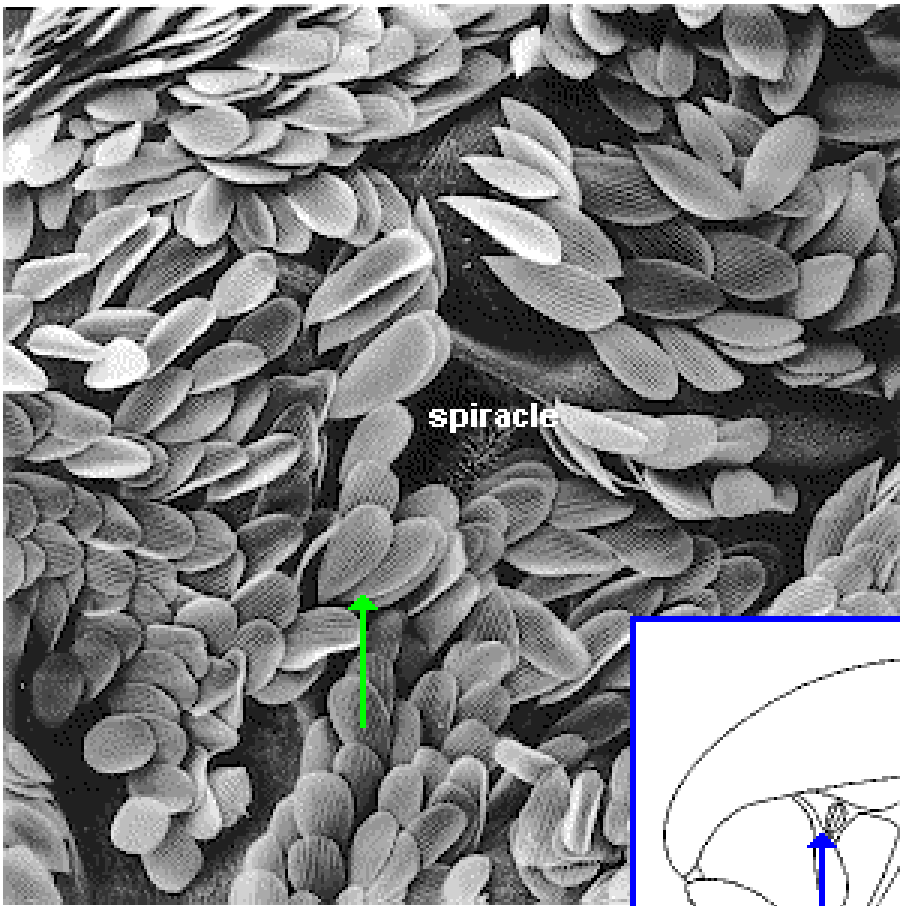


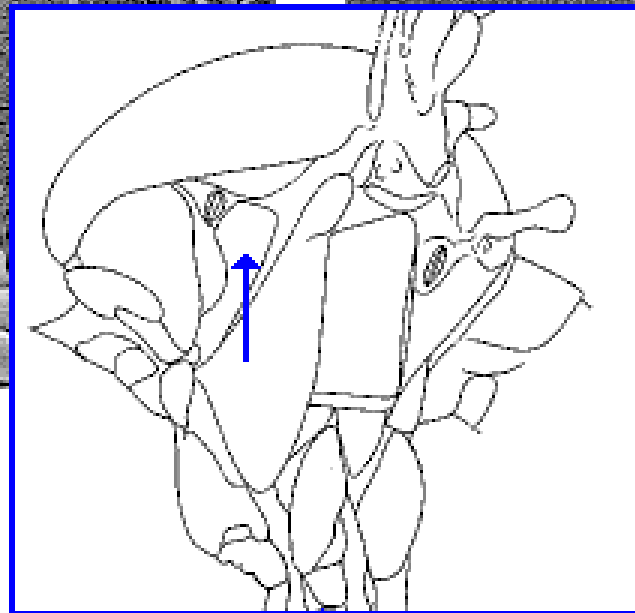
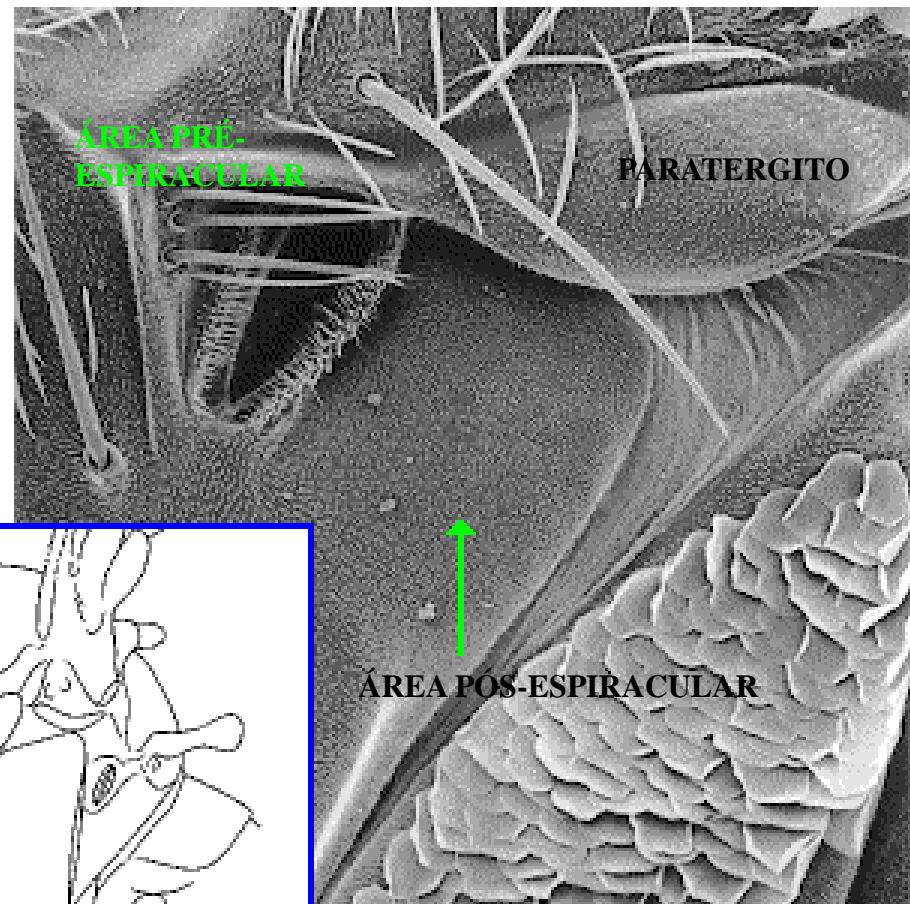
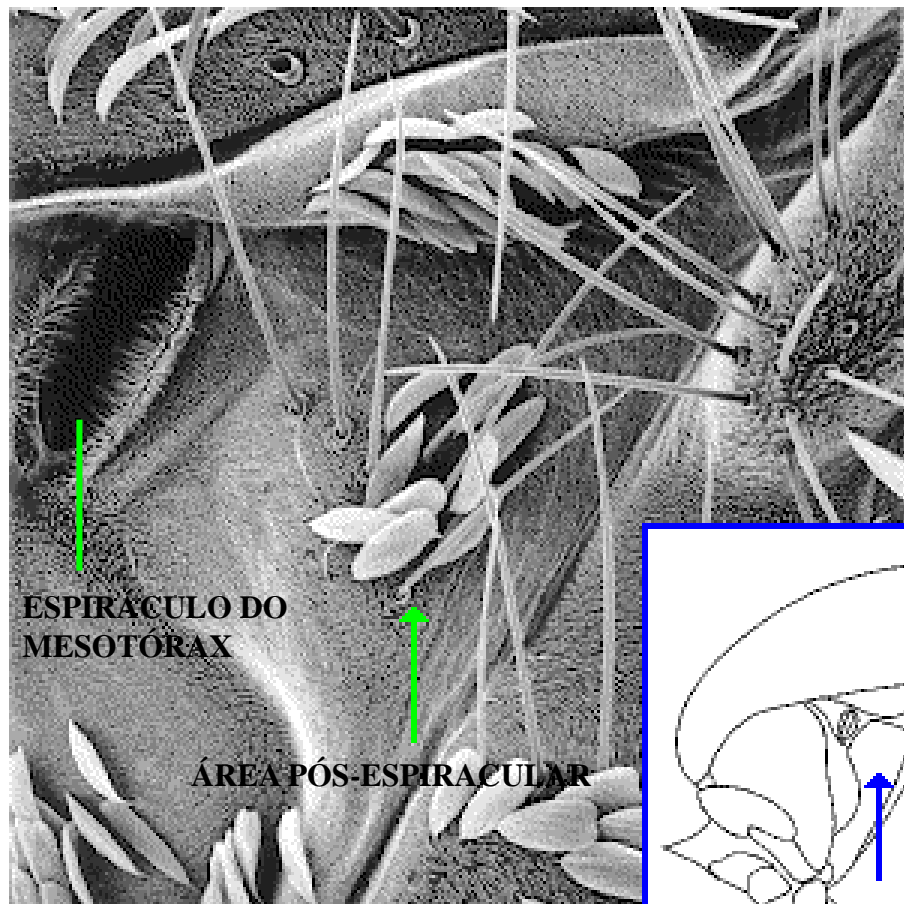




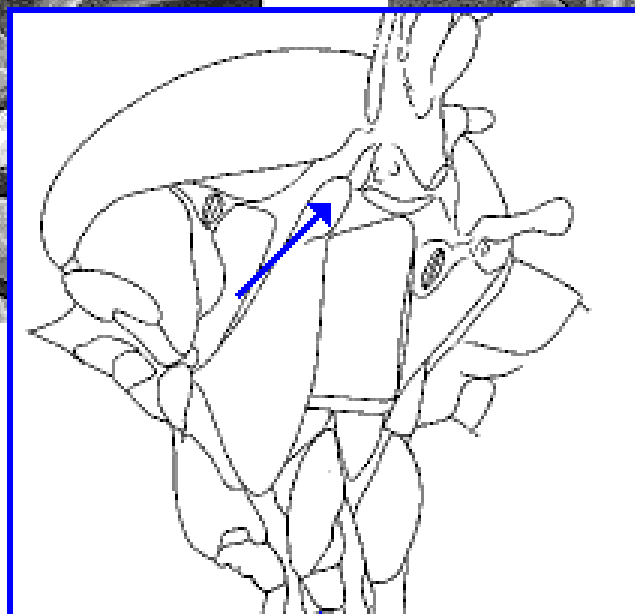
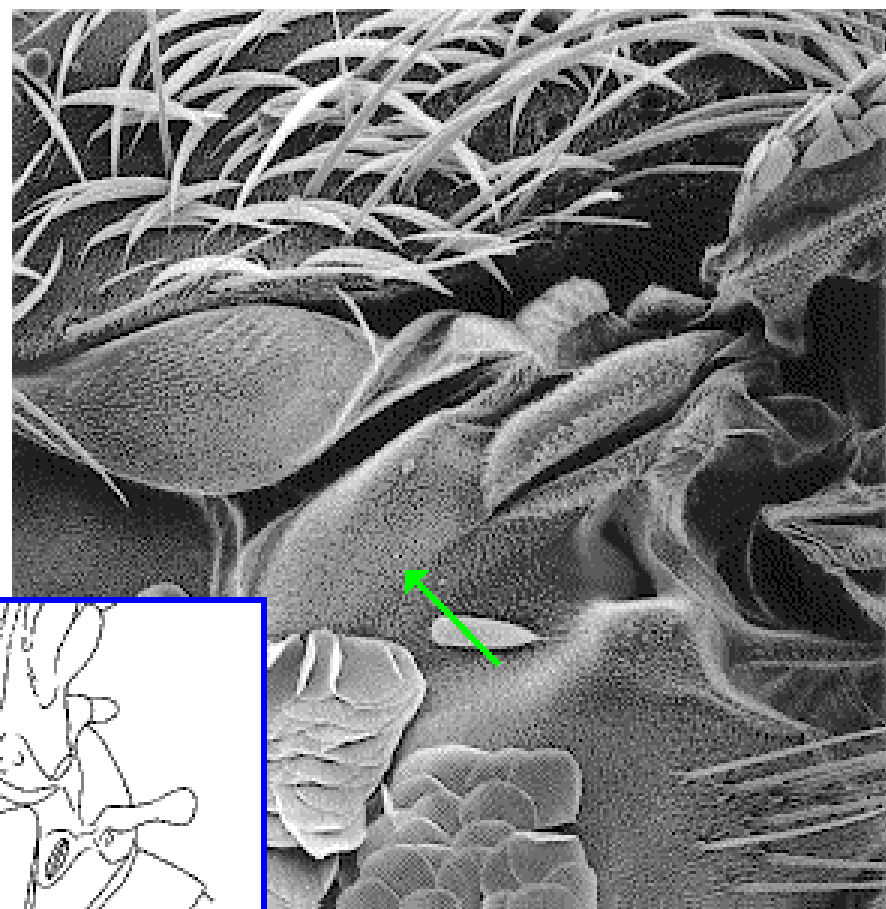
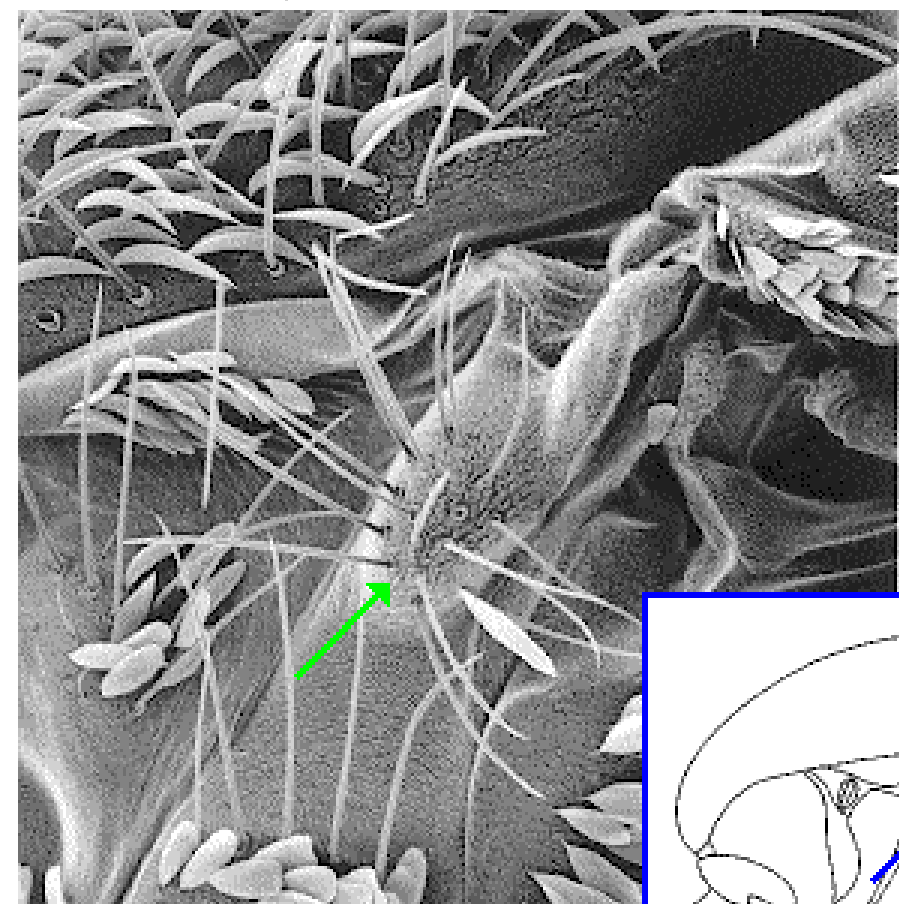




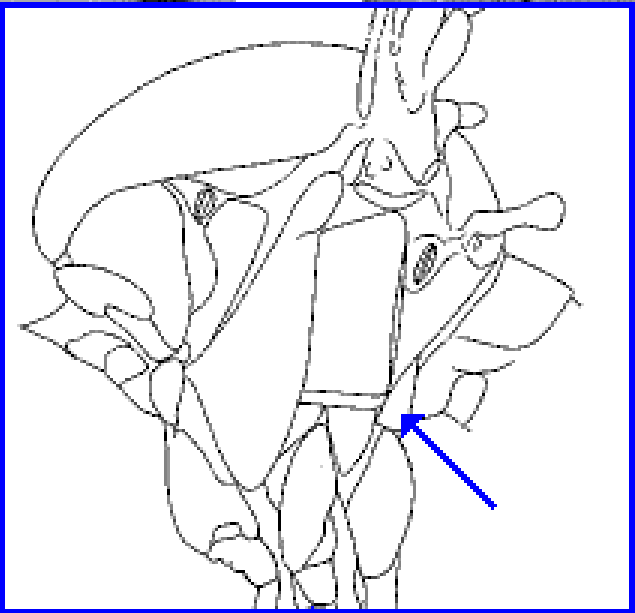
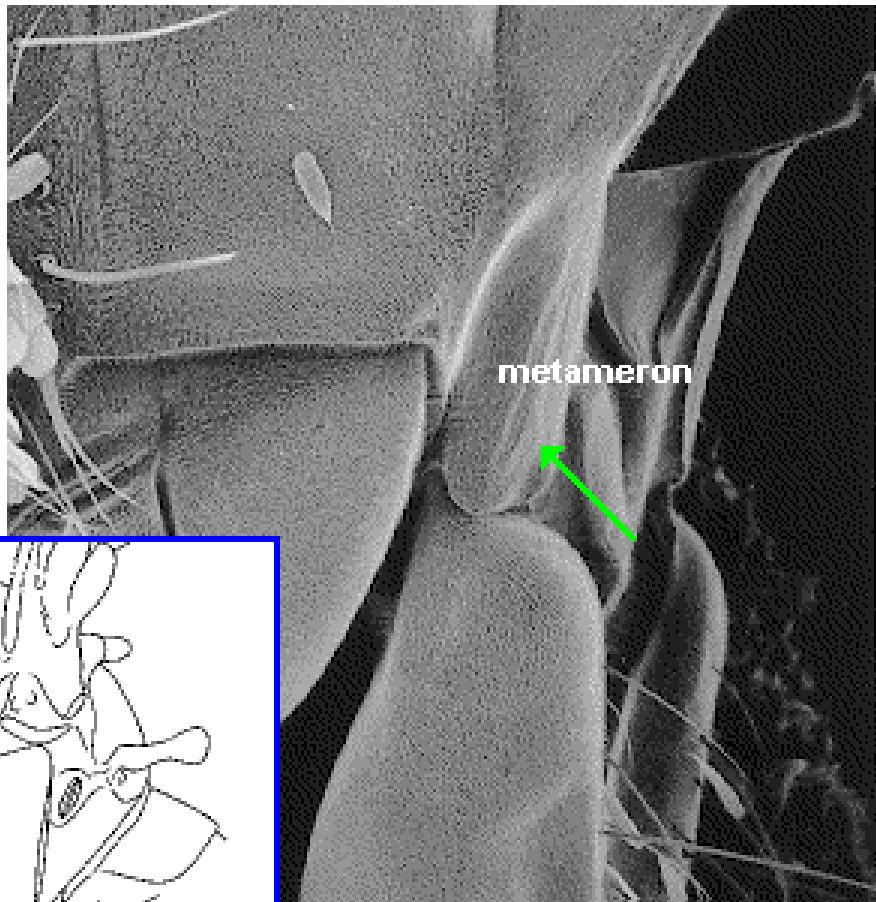
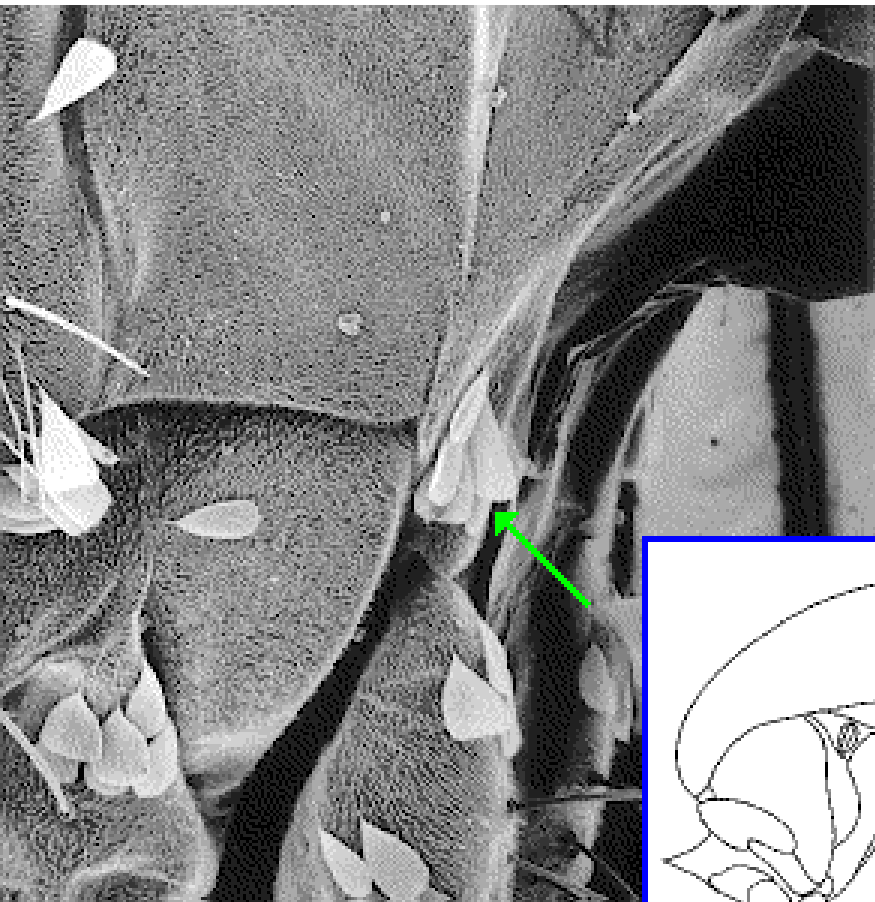




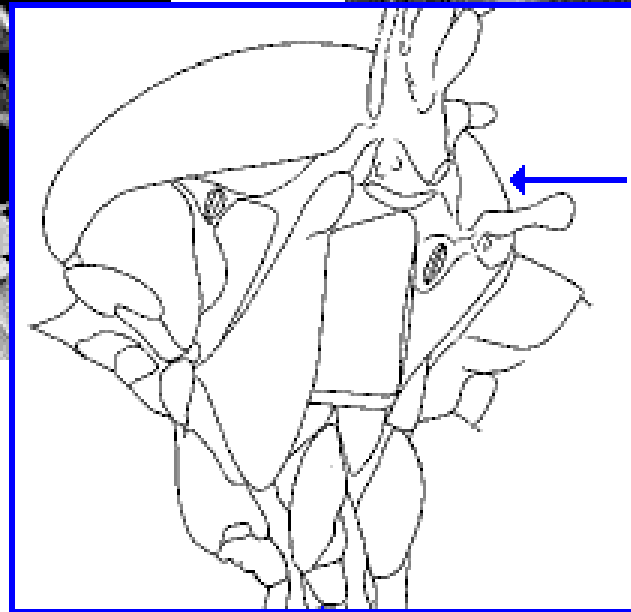
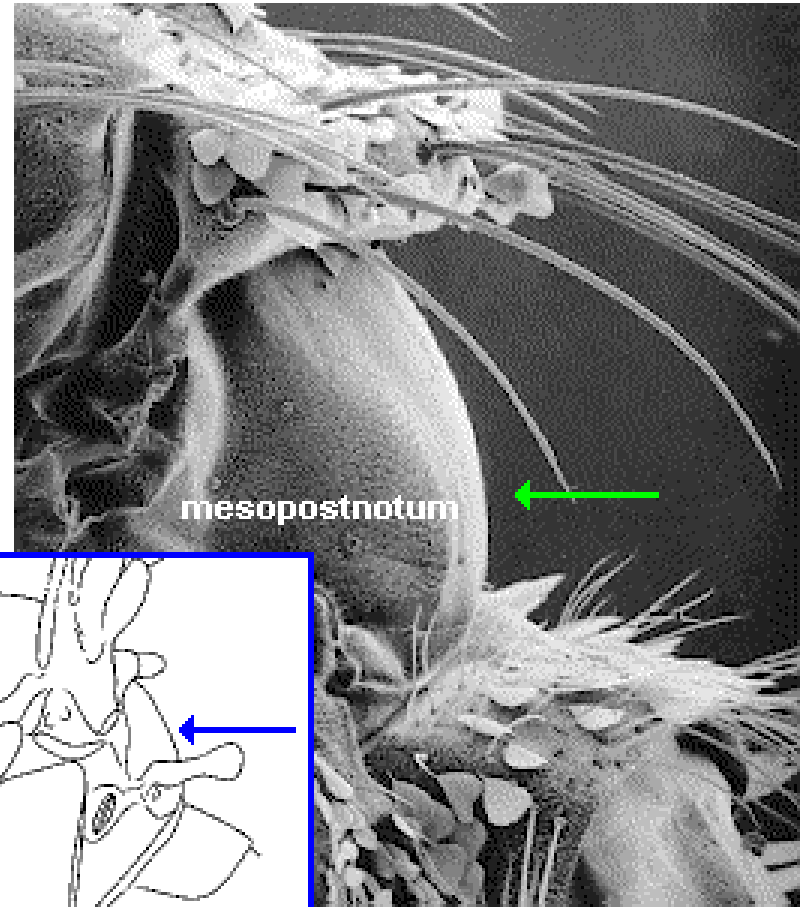
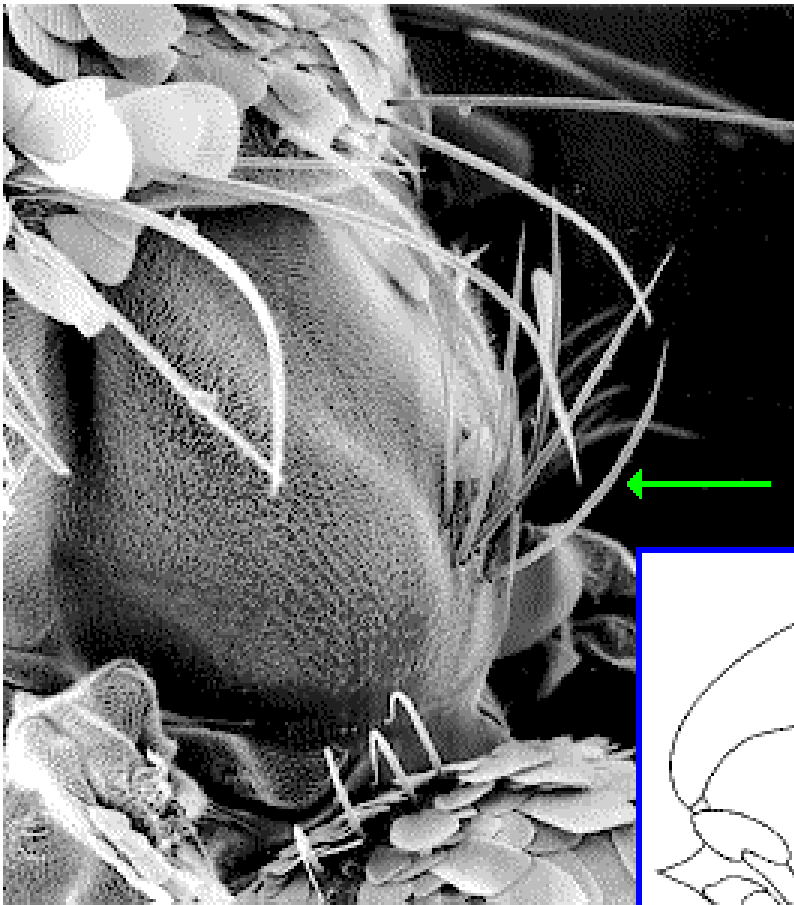




**BOTÃO PRÉ-ALAR**

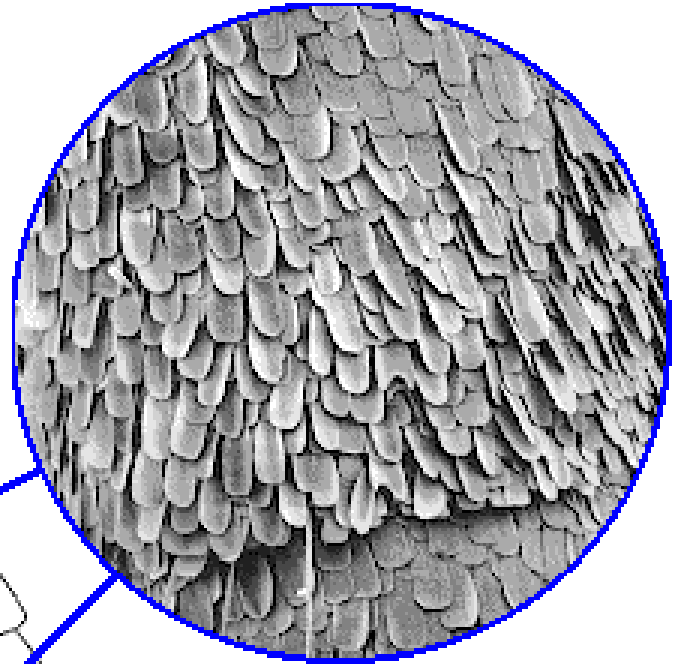
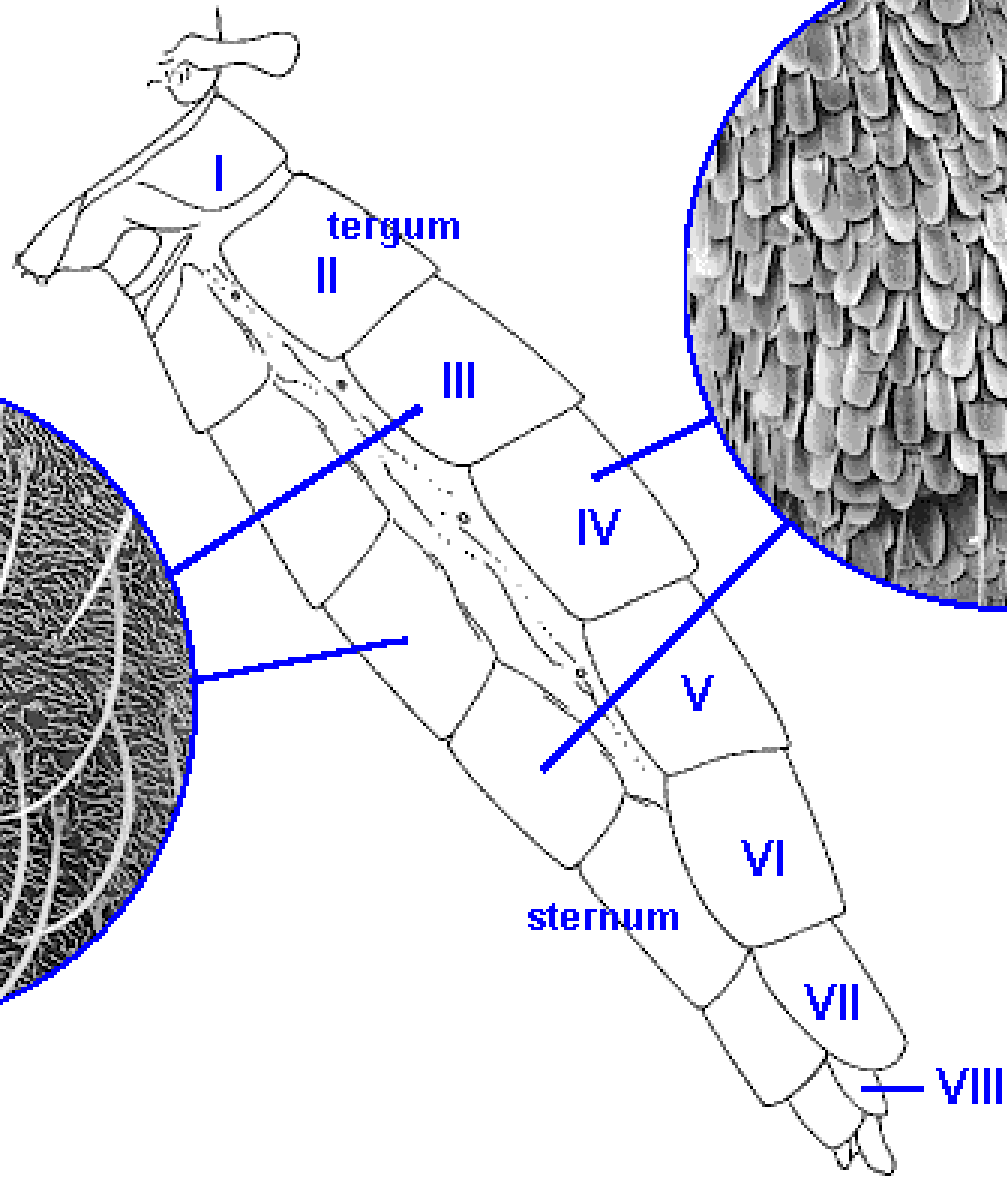


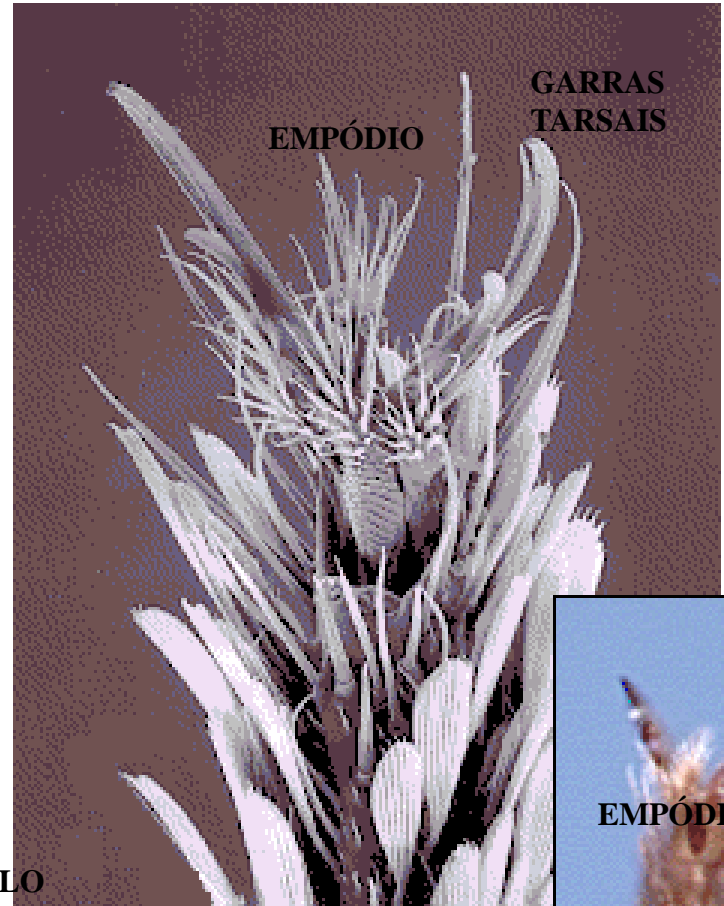
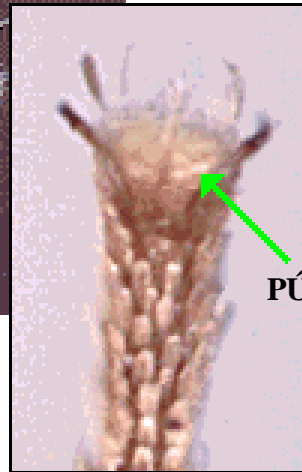
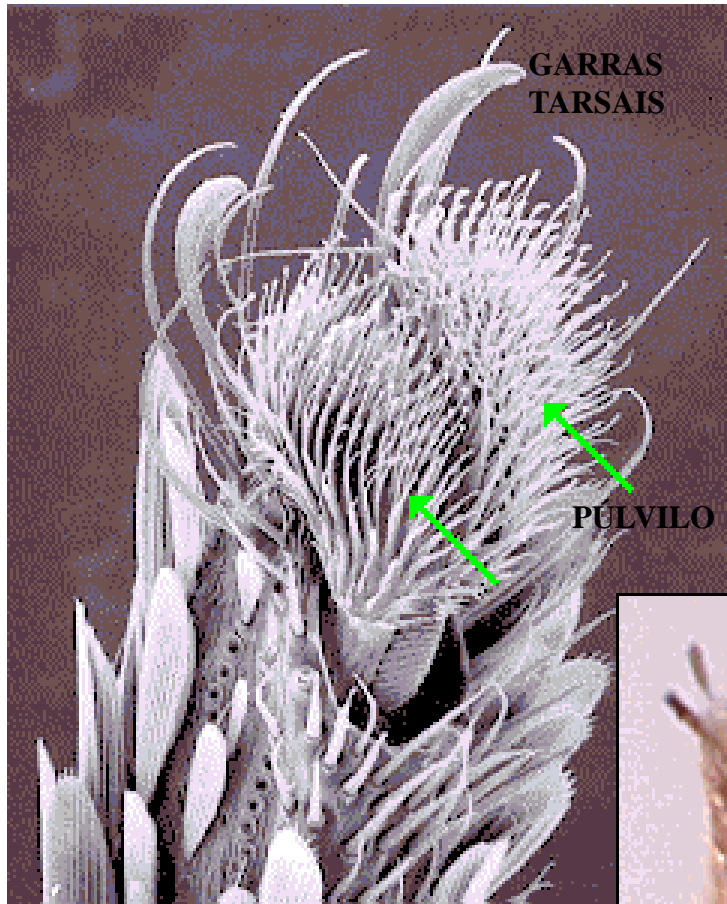
**METAEPÍMERO**

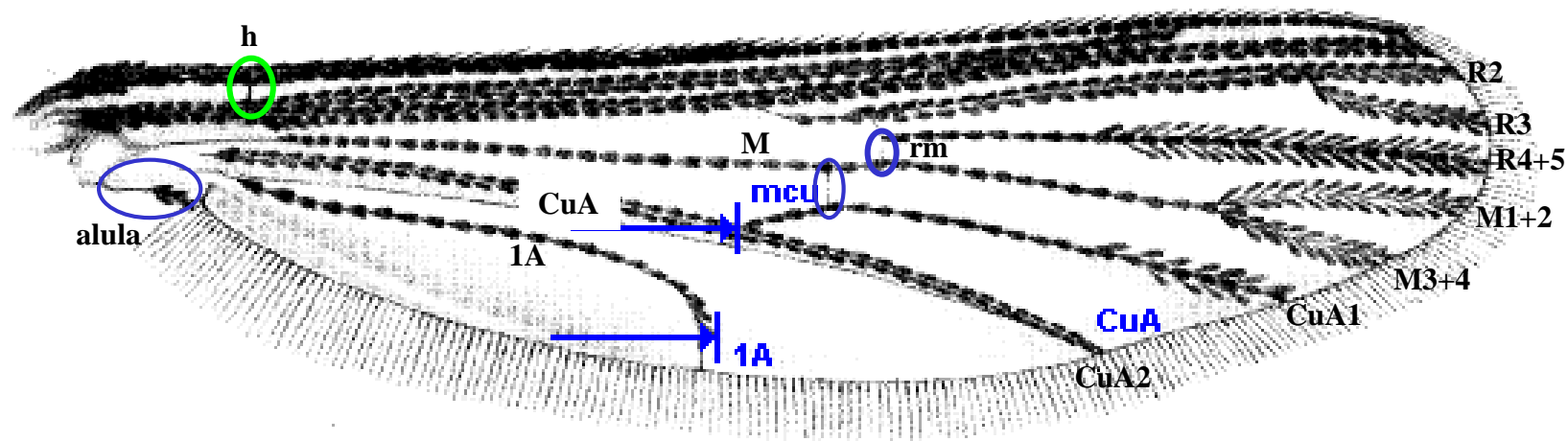
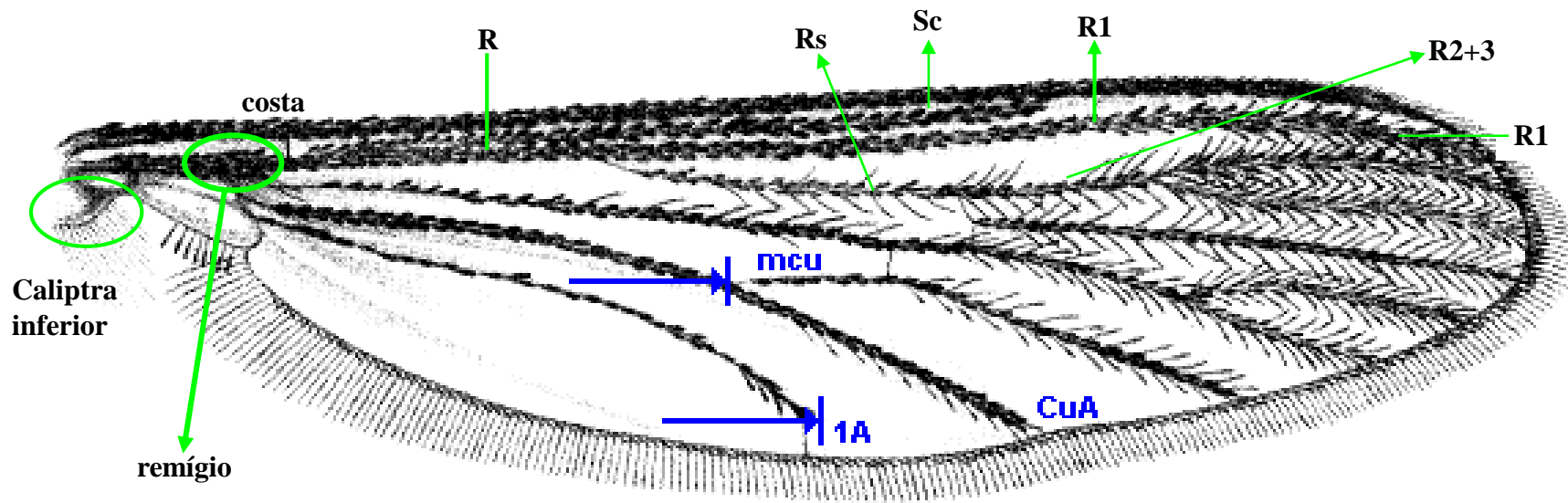


MESOPOSNOTO

**ABDOMEN**







## VEIAS ALARES

**TIPOS DE  
ESCAMAS  
ALARES**

