

# Instalação do Rational Software Architect 9.5 em ambientes Windows x64




## Requisitos:

- Sistemas windows 64 bits

## Passos:

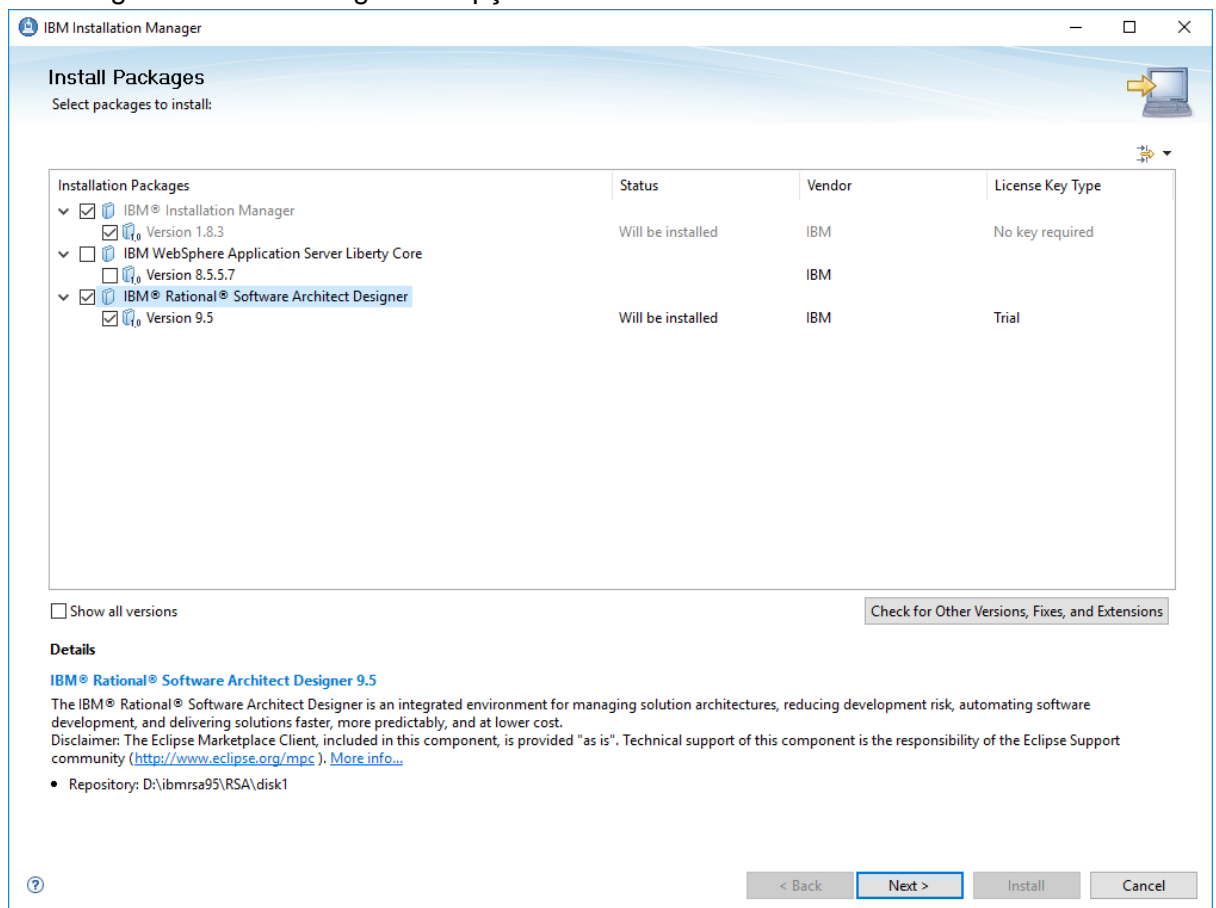
Para instalar a ferramenta de modelagem, é necessário instalar previamente o IBM Installation Manager e depois a ferramenta em si. Para isso siga os seguintes passos

1. Descompactar o arquivo `ibmrsa95.zip`
2. Na pasta de compactada haverá três diretórios:

-  RSA
-  RSA\_SETUP
-  RSA\_v9.5\_Activation\_Kit

Navegar para `RSA_SETUP -> InstallerImage_win32_win32_x86_64` e executar, como administrador, o arquivo `install.exe`

3. Após carregar Escolher as seguintes opções:



Tomar cuidado de não selecionar o IBM Websphere Application Server ...

Nas seguintes telas, basta aceitar a licença, os valores padrão e clicar em Next.

IBM Installation Manager

## Install Packages

Select a location for the shared resources directory and a location for Installation Manager.

Install > Prerequisite > Licenses > **Location** > Features > Summary

When you install packages, files are stored in two locations:

- 1) The shared resources directory - resources that can be shared by multiple packages.
- 2) The installation directory - any resources that are unique to the package that you are installing.

**Important:** You can only select the shared resources directory the first time you install a package with the IBM Installation Manager. For best results select the drive with the most available space because it must have adequate space for the shared resources of future packages.

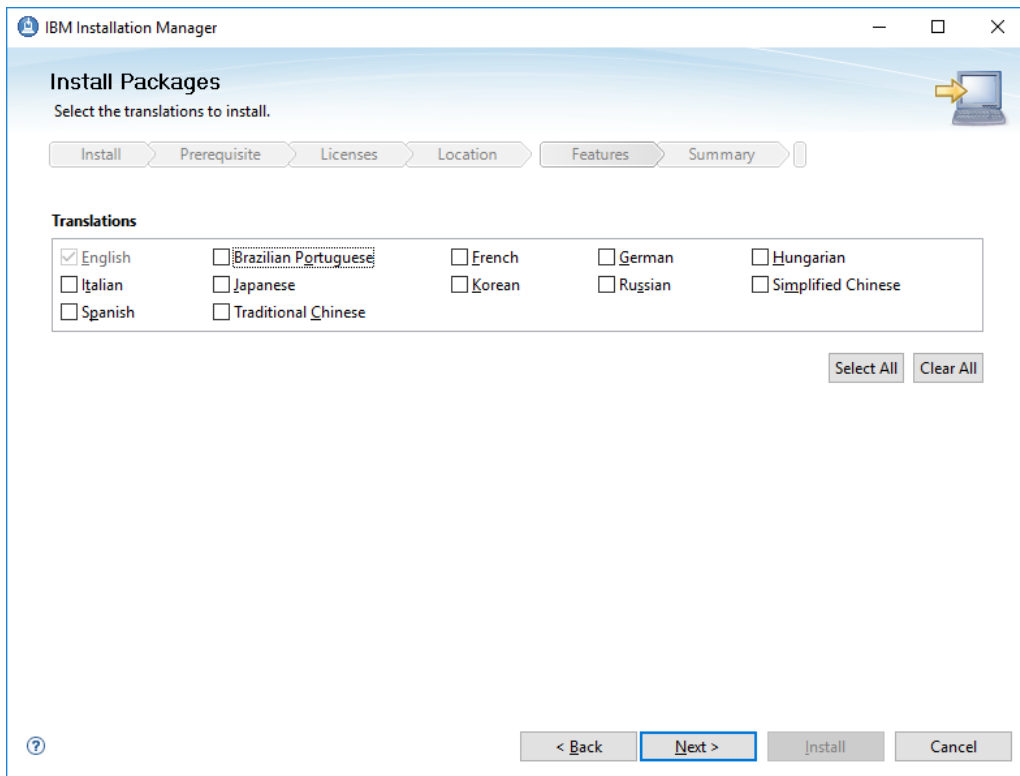
Shared Resources Directory:

**i** Once installed, IBM Installation Manager will be used to install, update, modify, manage and uninstall your packages.

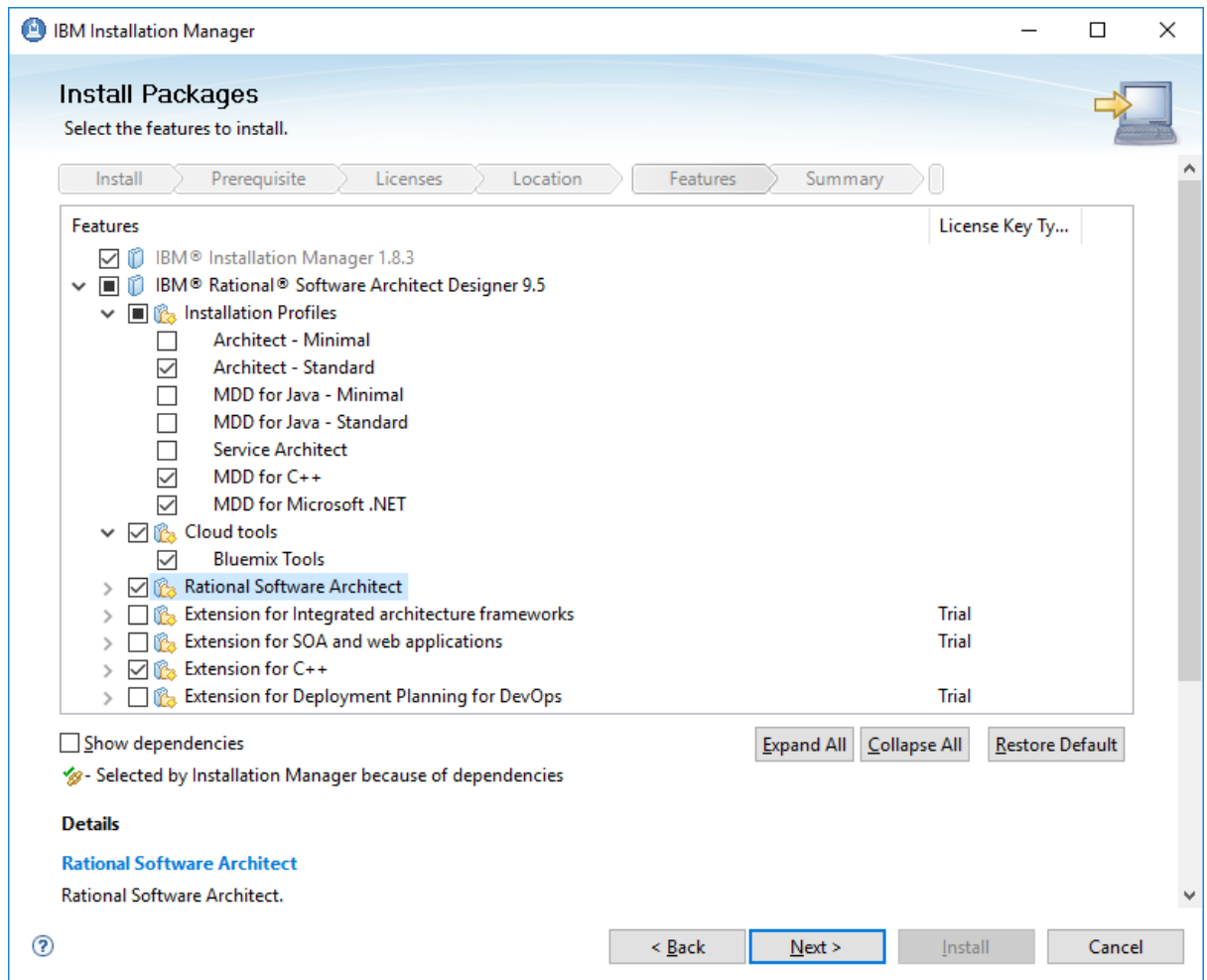
Installation Manager Directory:

**Disk Space Information**

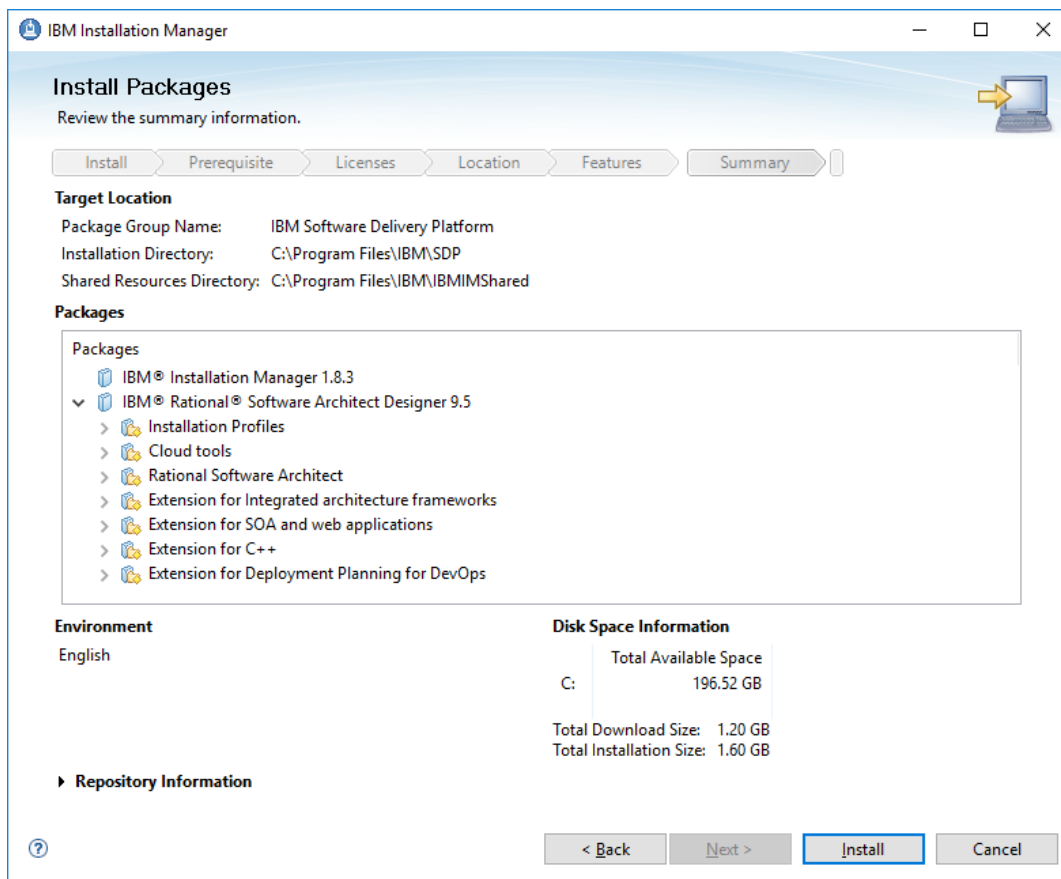
Volume	Available Space
C:	196.52 GB



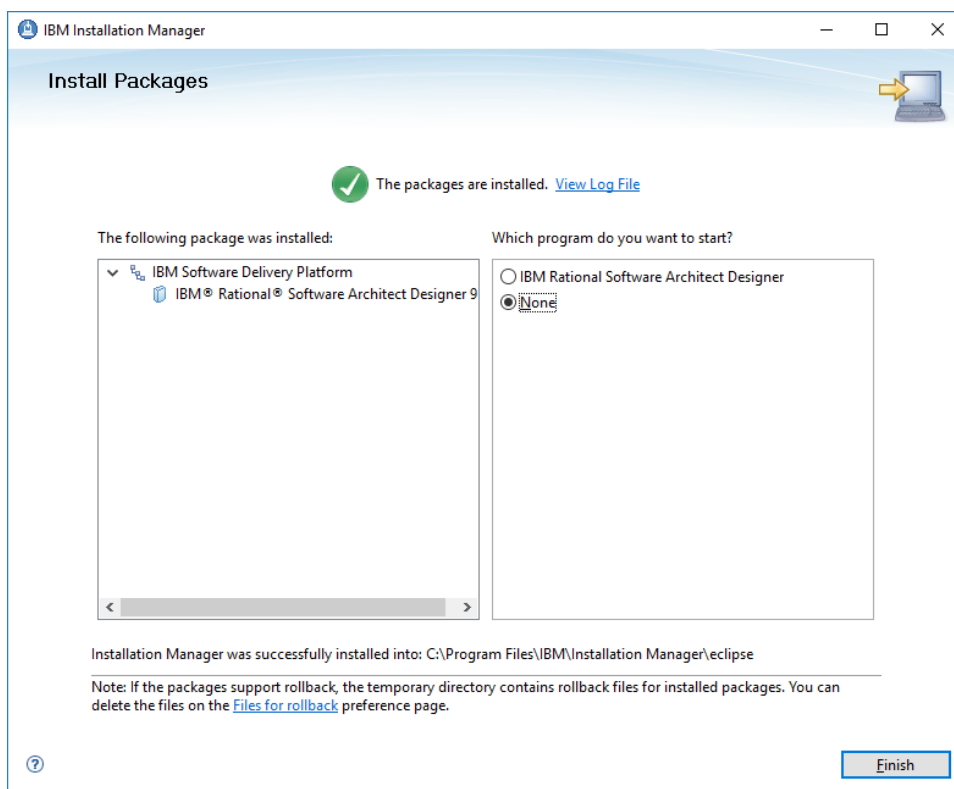
4. No menu de instalação de pacotes, escolher as seguintes opções de instalação. Para este curso serão usadas as funcionalidades do Rational Software Architect e Extension for C++.



5. Após clicar em Next é preciso confirmar a instalação clicando em Install.

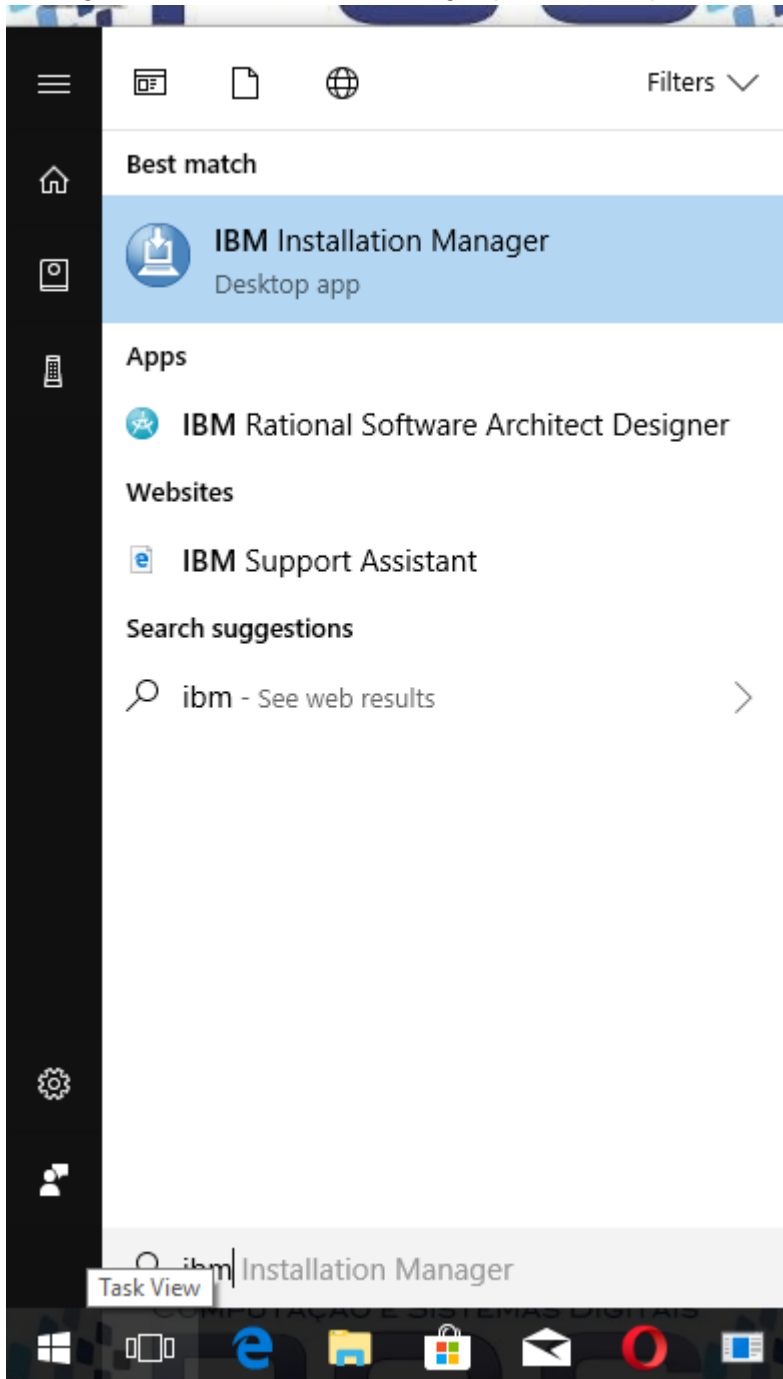


A instalação demora entre 10 a 15 minutos. No fim a seguinte tela aparecerá.

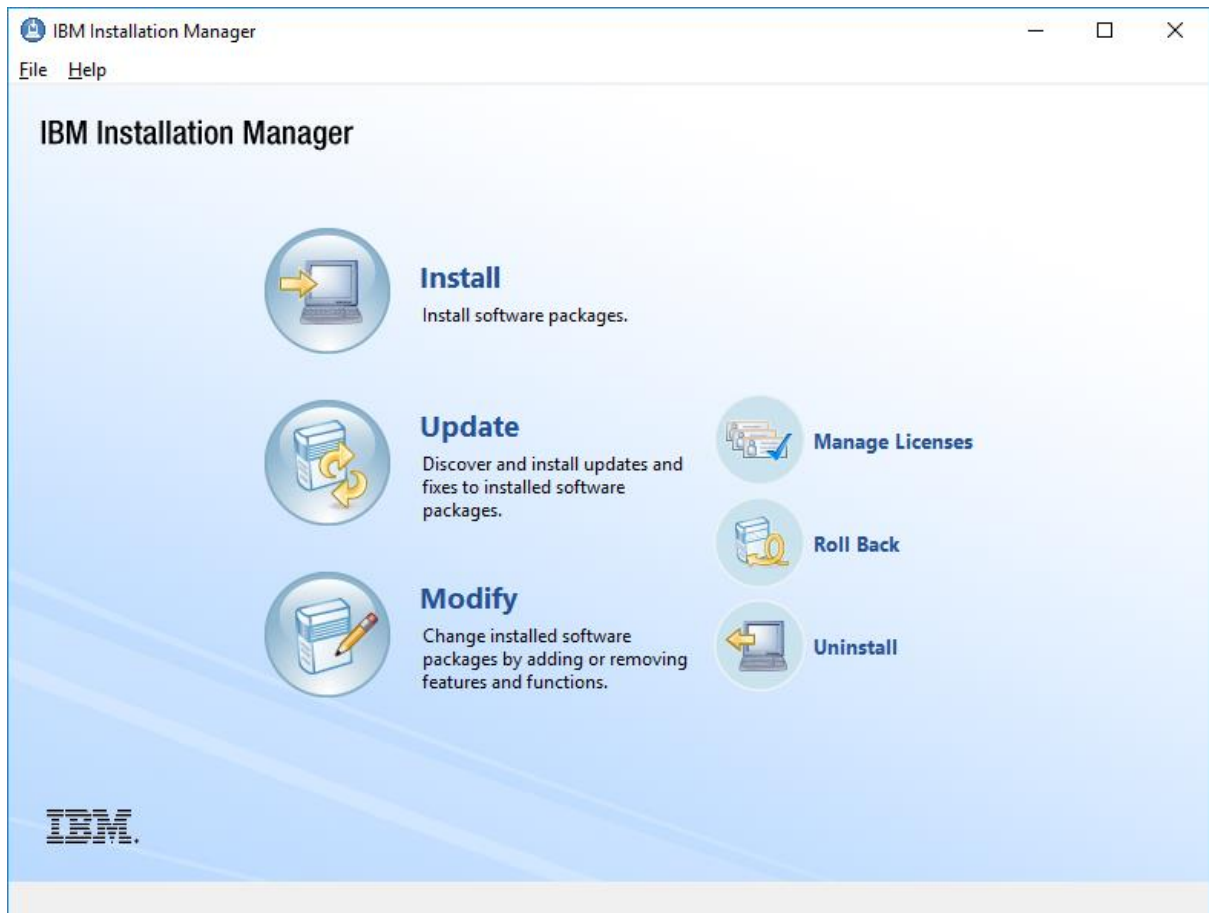


O seguinte passo é carregar a licença do software. Para isso:

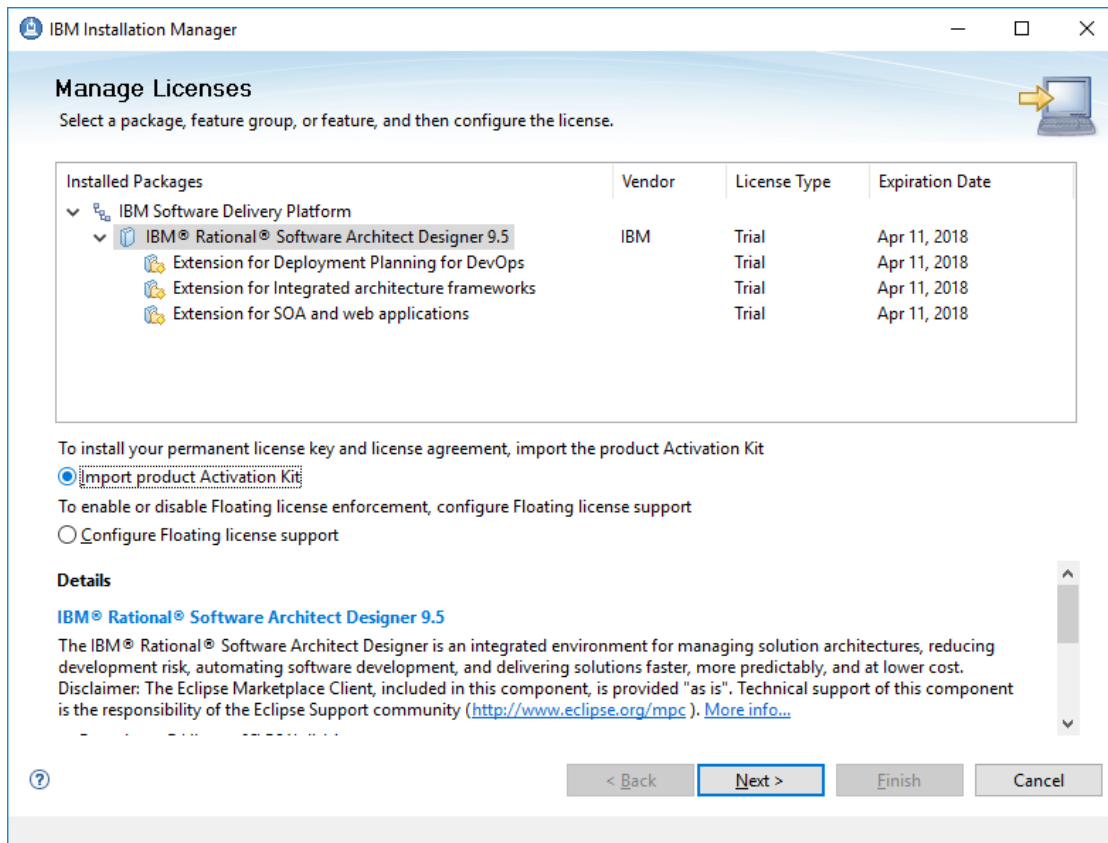
1. Carregue o IBM installation manager procurando por ele no windows search



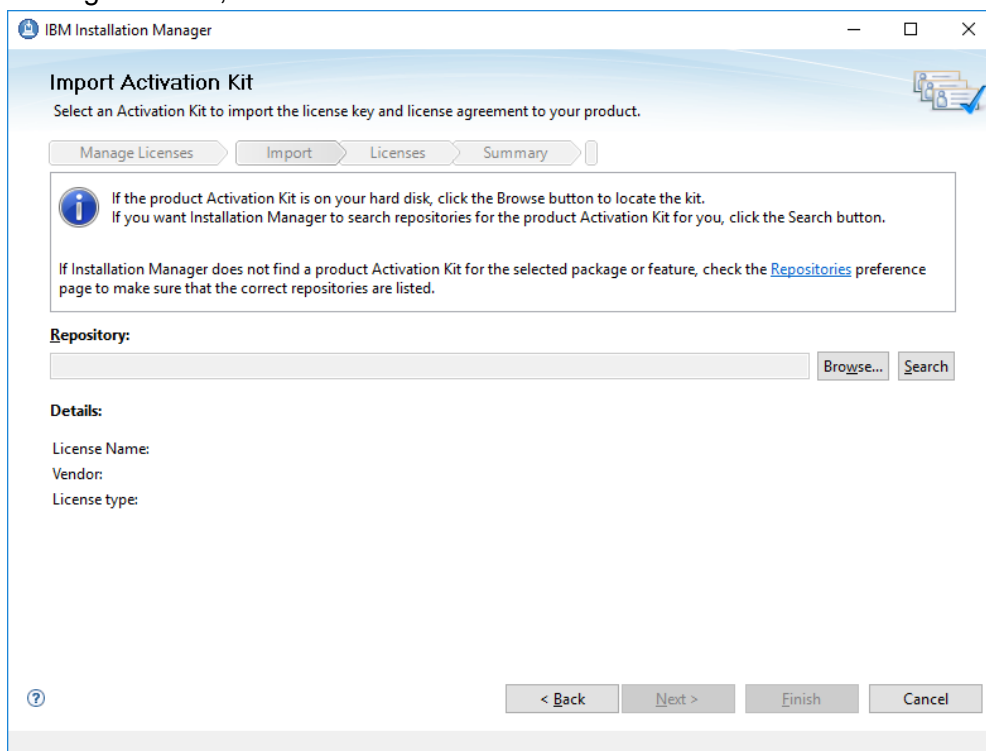
2. Clicar em Manage Licenses



Escolher Rational Software Architect Designer 9.5, selecionar Import Product Activation Kit e clicar em Next.



Na seguinte tela, clicar em Browse.

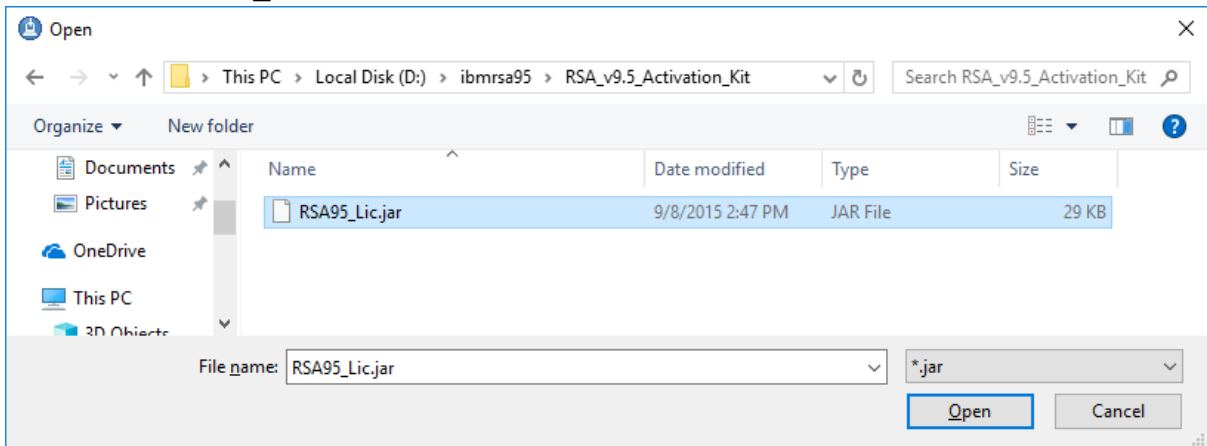


Na janela que aparece é preciso encontrar o arquivo da licença. Ele está na pasta onde foi descompactado o arquivo `ibmrsa95.zip`, no subdiretório `RSA_v9.5_Activation_Kit`

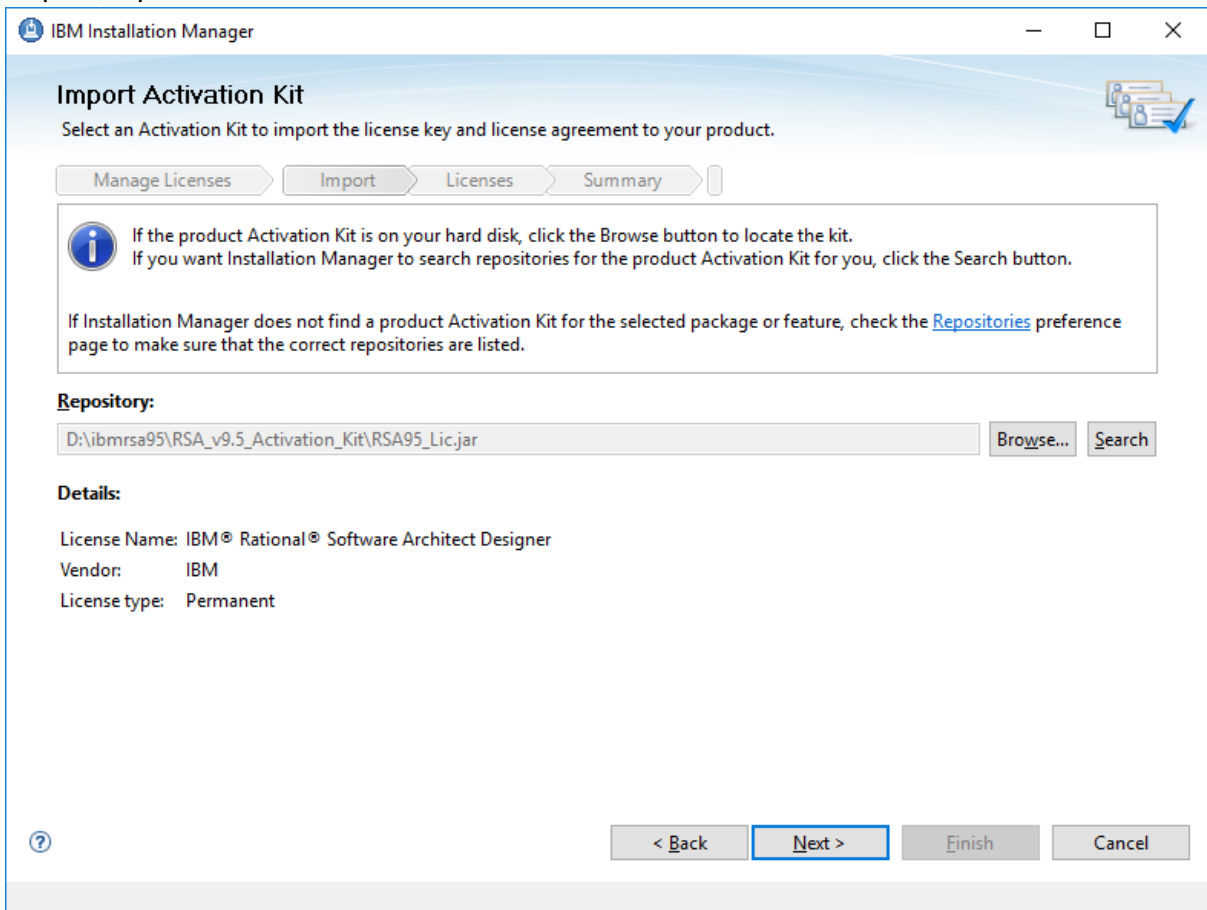


- RSA
- RSA\_SETUP
- RSA\_v9.5\_Activation\_Kit

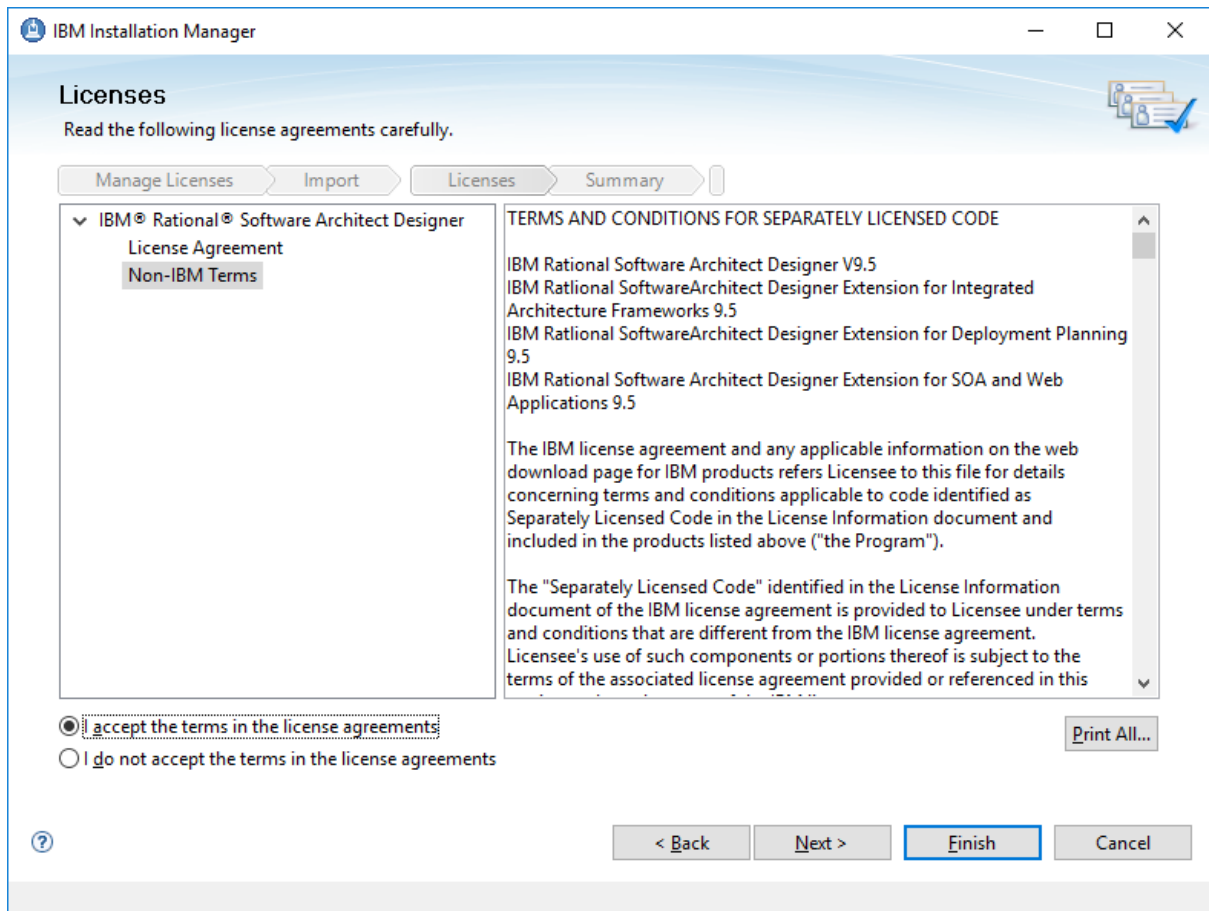
O arquivo é RSA95\_Lic.jar



Depois, é preciso clicar em Next



Aceitar a licença e clicar em Finish.



E em Finish novamente.

Depois, pode se fechar o Installation Manager e proceder para carregar IBM Rational Software Architect Designer.