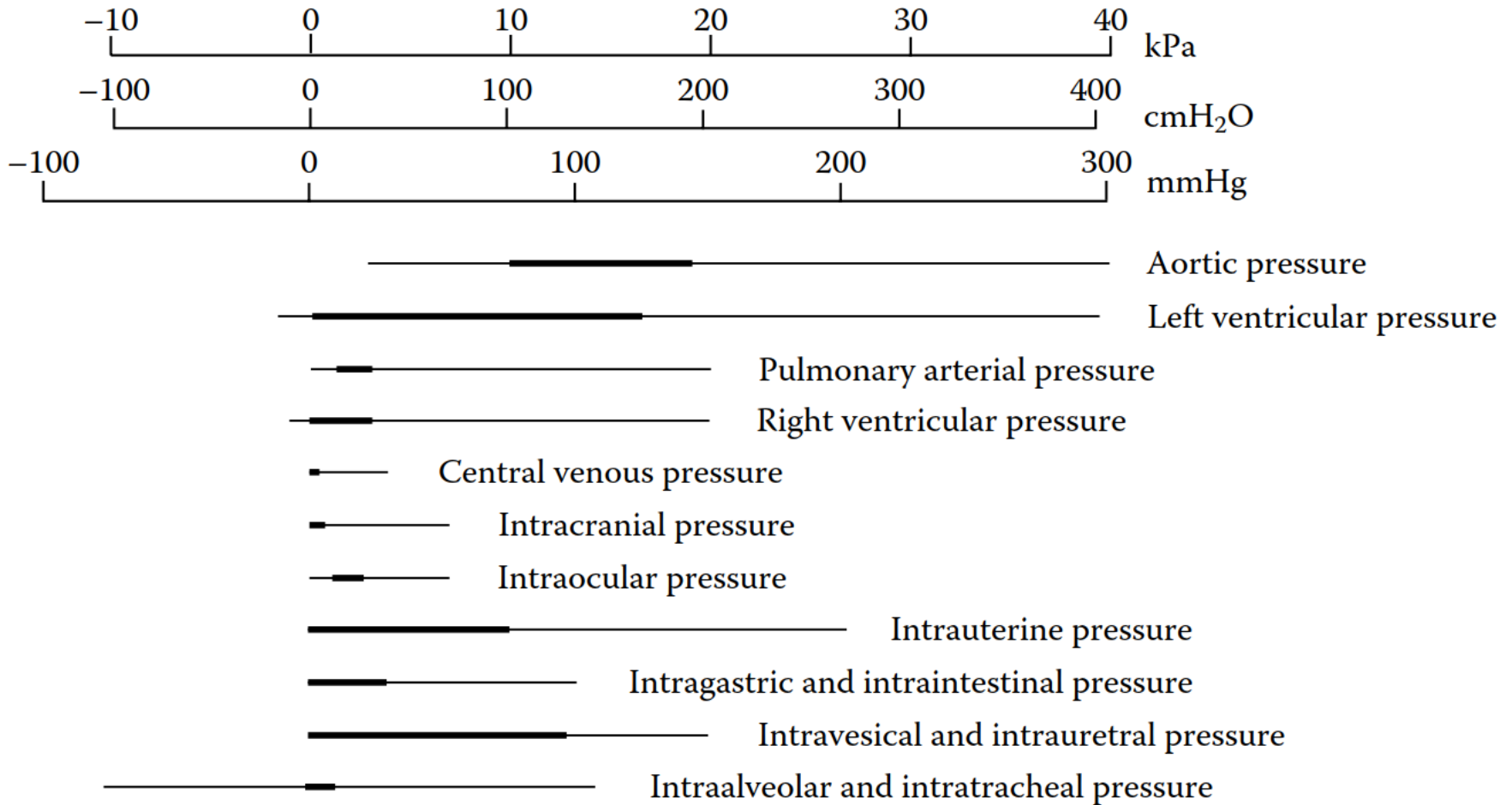


# AULA 19 – PTC 3435

23/10/2018

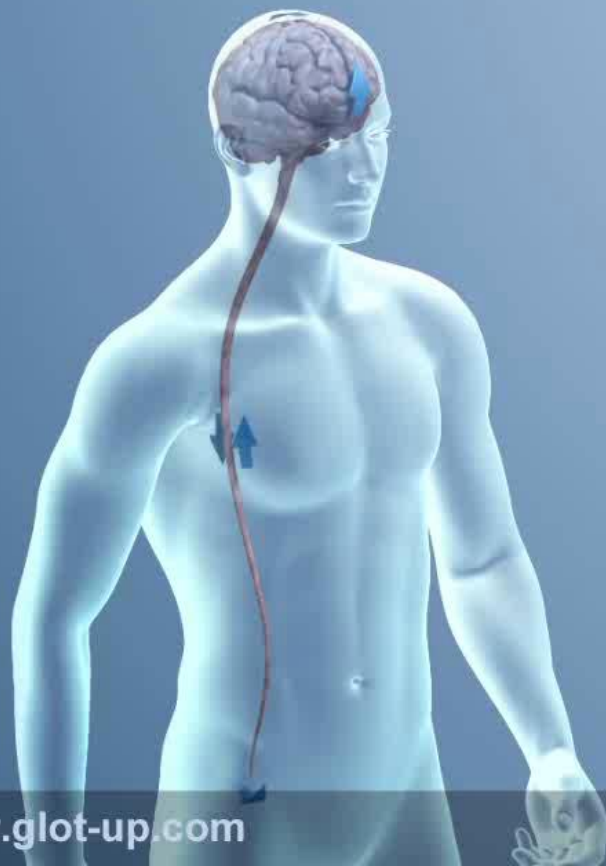
# TRANSDUTORES DE PRESSÃO



# PRESSÃO INTRACRANIANA

FLUJO DEL LÍQUIDO CEFALORRAQUÍDEO

Glott-Up  
protusor bucal

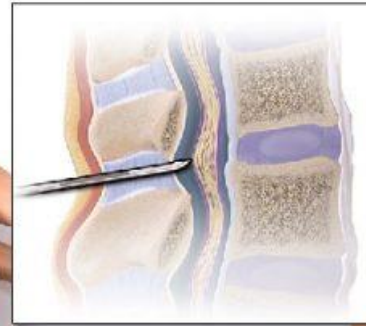
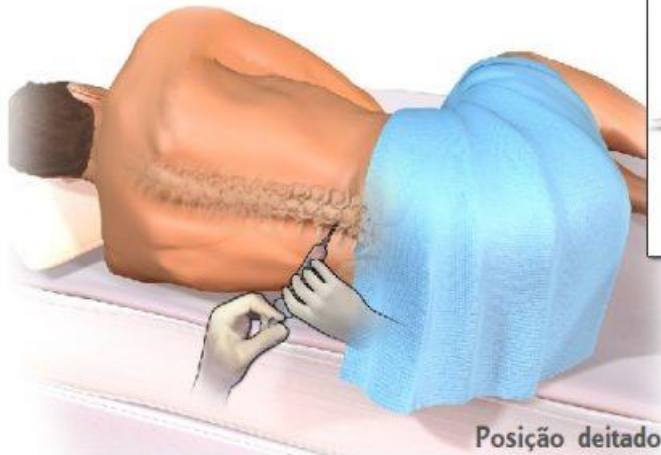


[www.glot-up.com](http://www.glot-up.com)

© Copyright Barcelona 2011 - Glott-Up.

# PRESSÃO INTRACRANIANA

## Punção liquórica por via lombar



INFECTOLOGIA

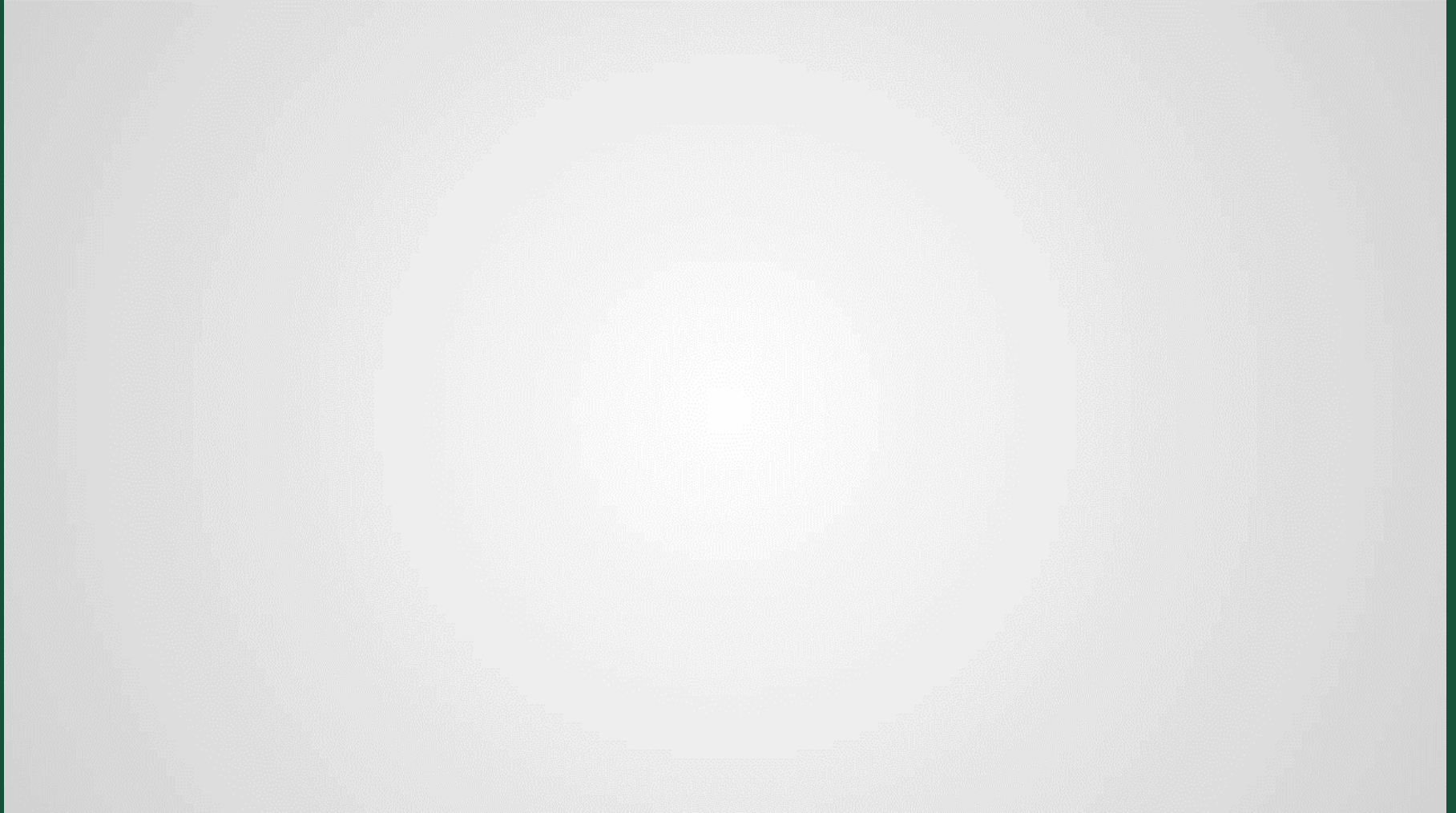


# PRESSÃO INTRAOCULAR

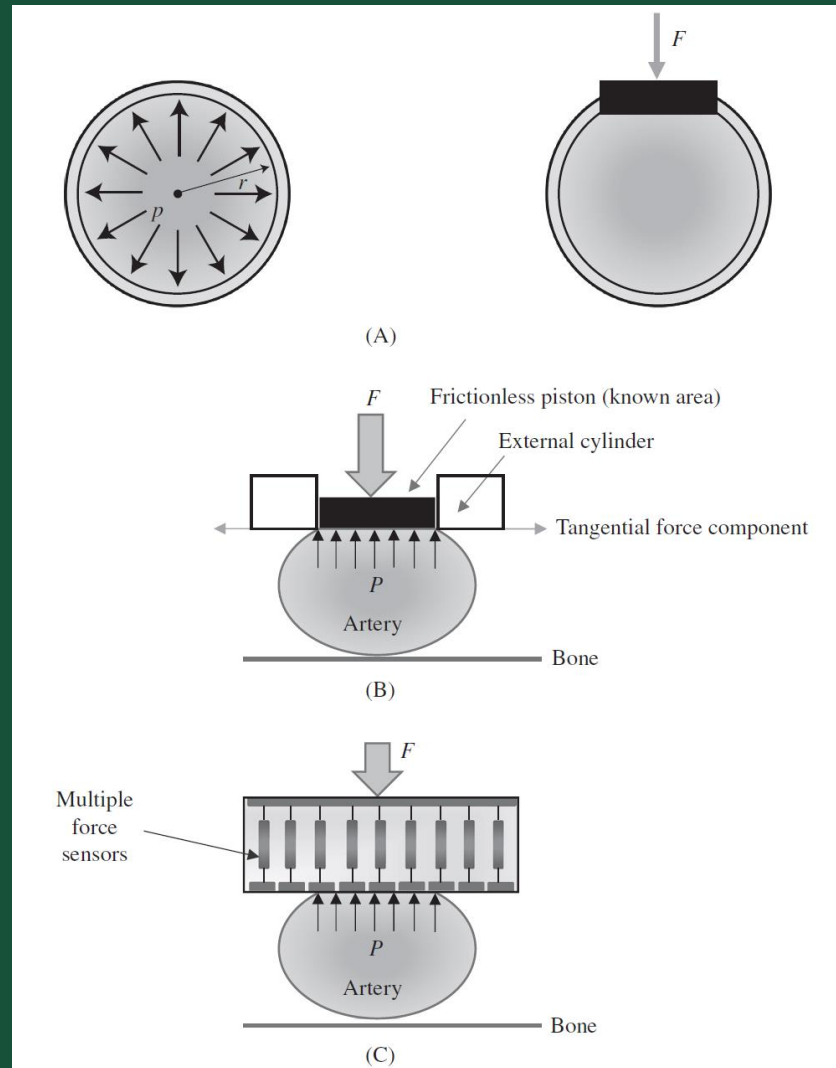


[www.AlilaMedicalMedia.com](http://www.AlilaMedicalMedia.com)

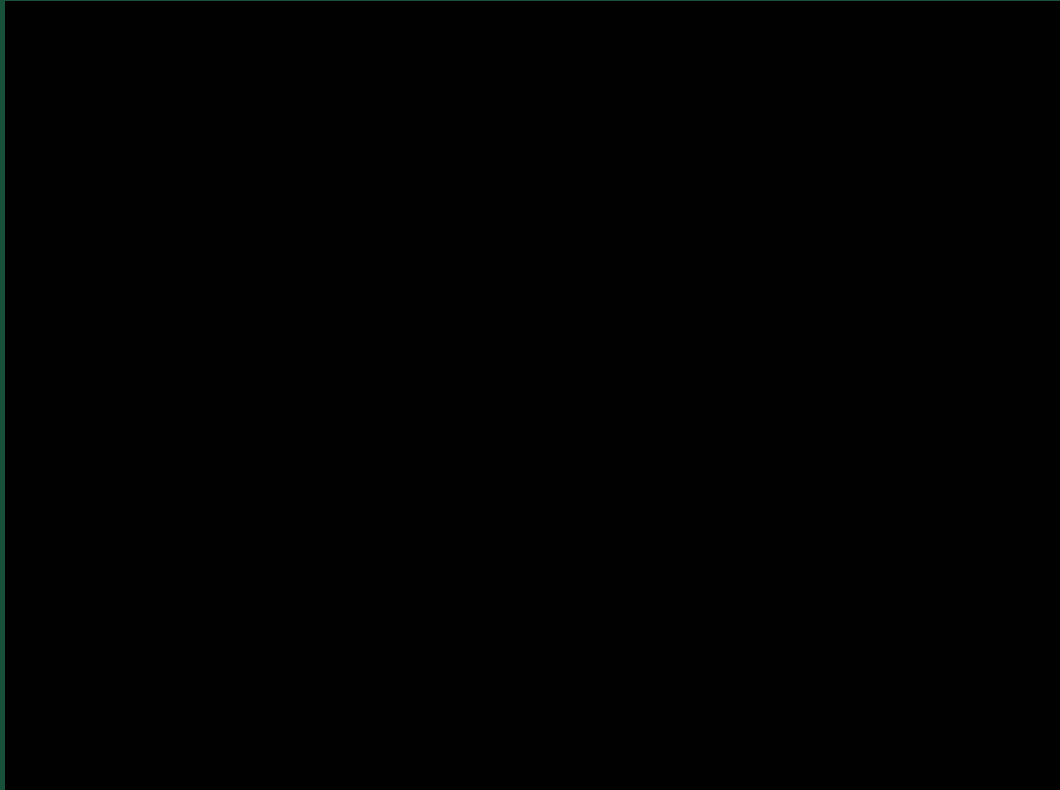
# PRESSÃO INTRAOCULAR



# TONOMETRIA

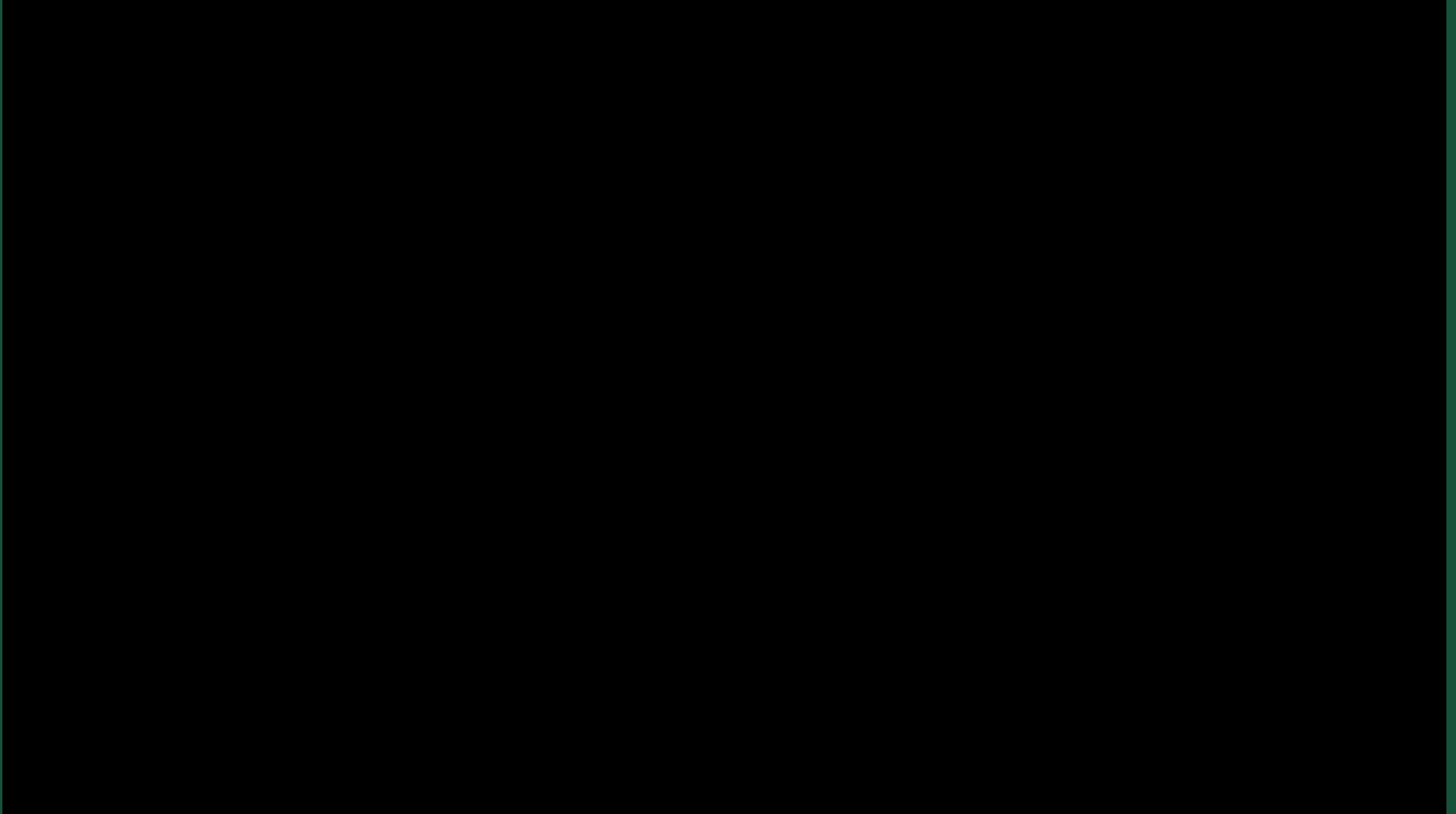


# PRESSÃO INTRAUTERINA

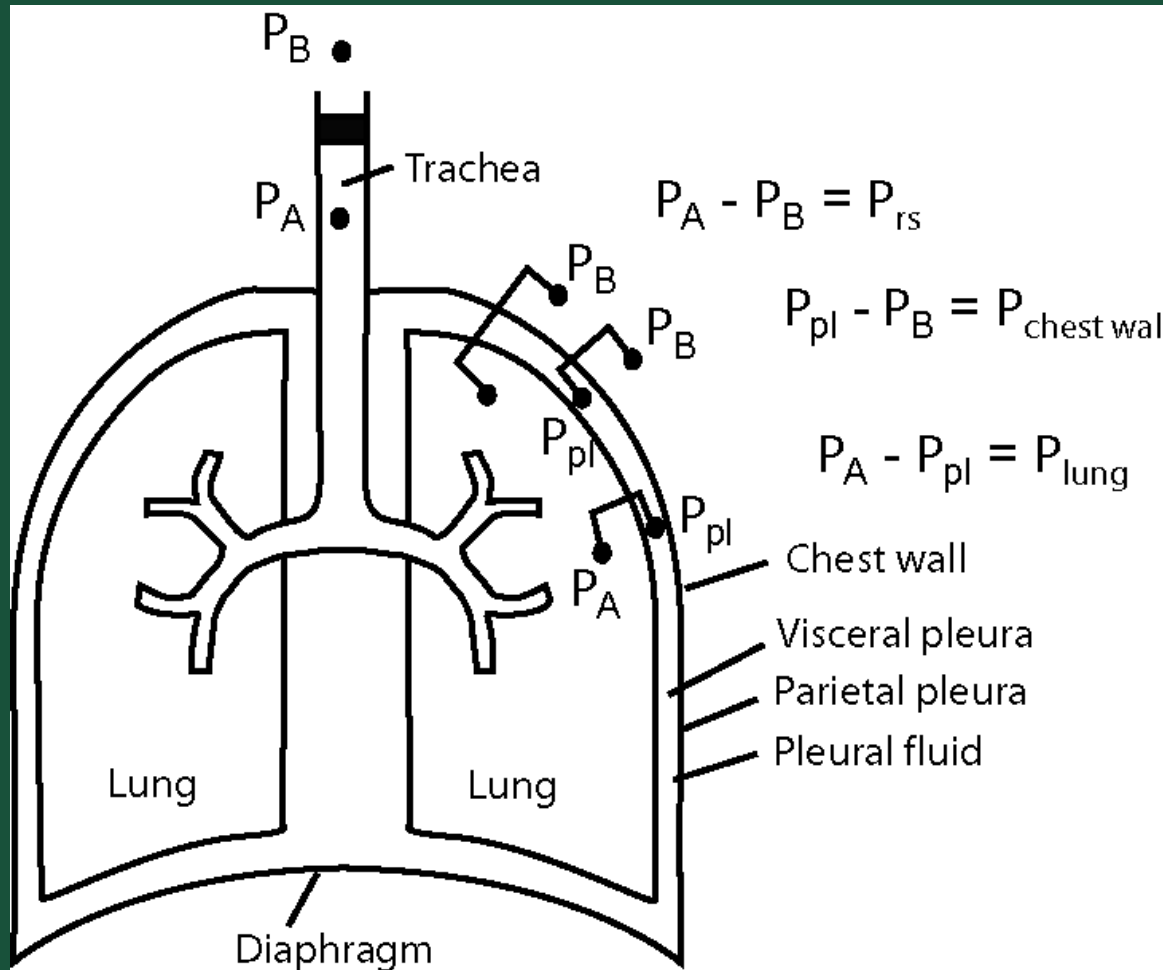




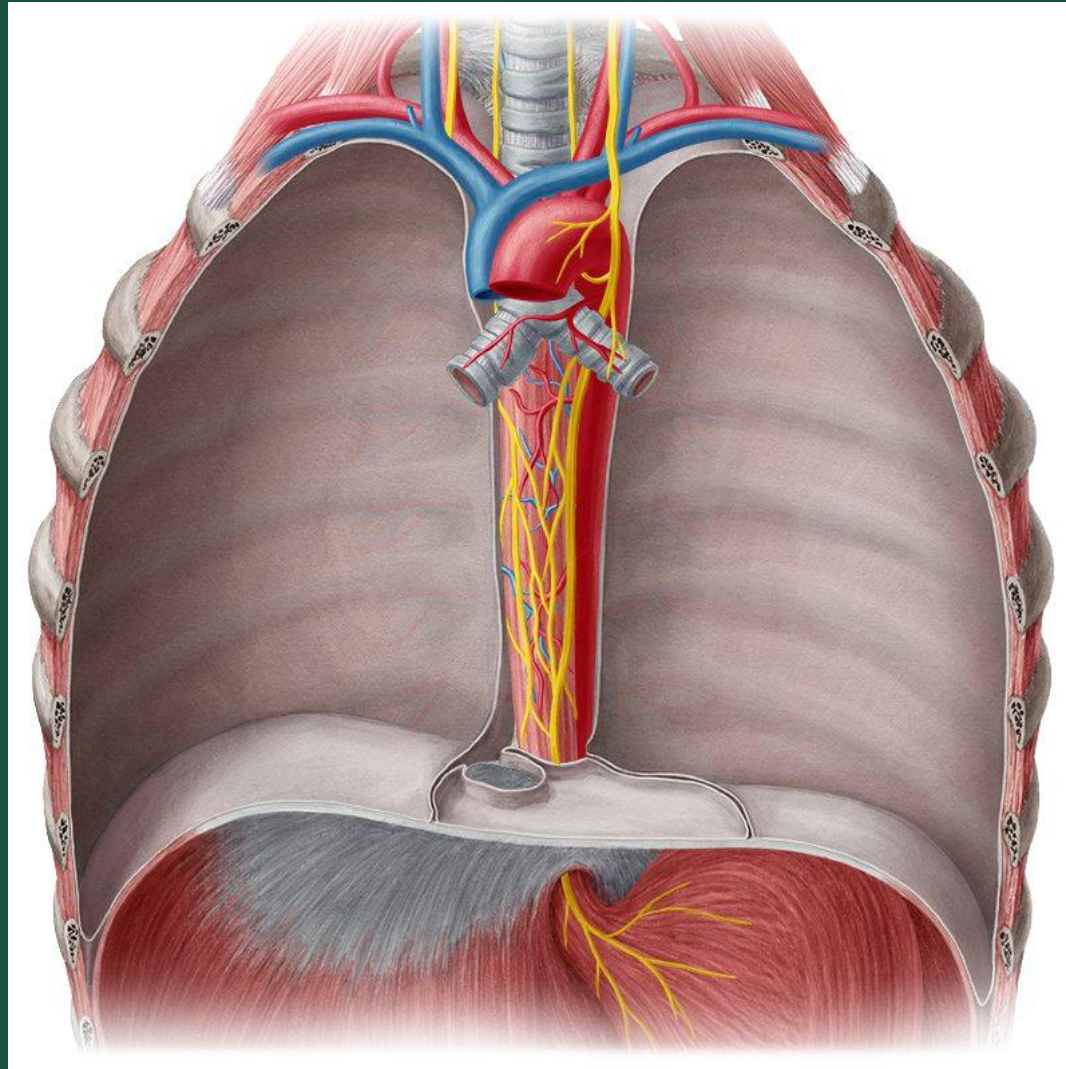
# PRESSÃO INTRA ABDOMINAL



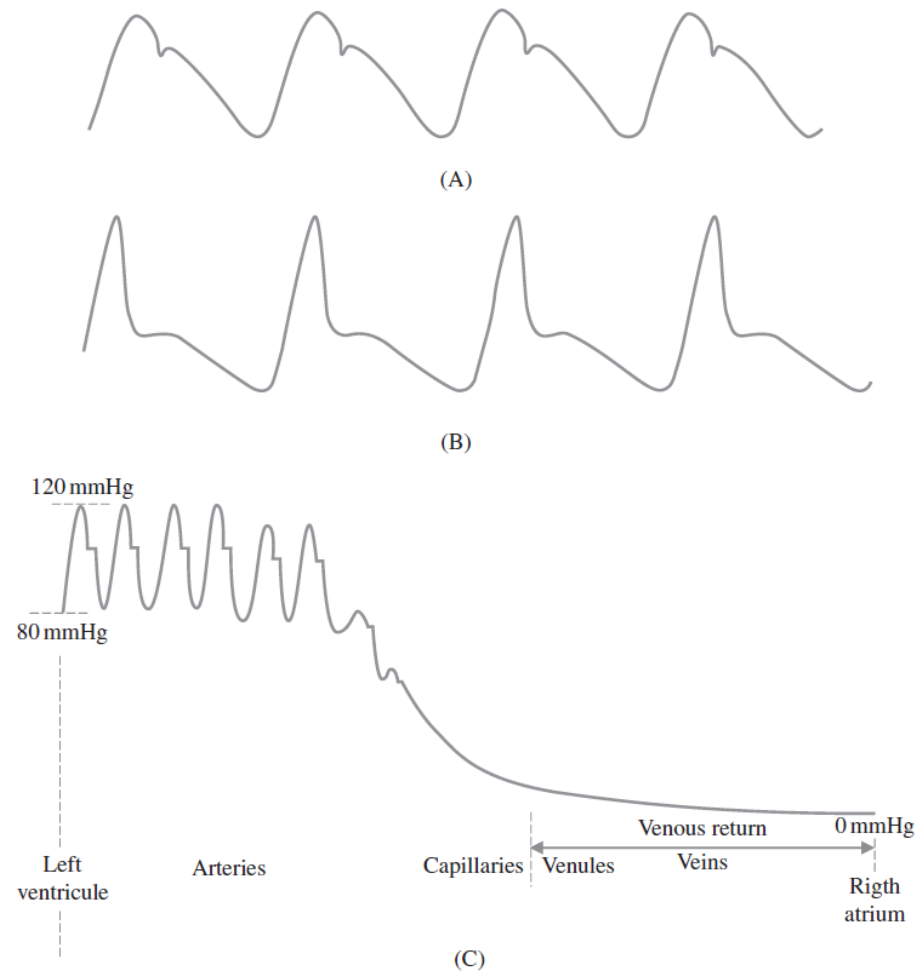
# PRESSÃO INTRA PLEURAL



# PRESSÃO INTRA TORÁCICA

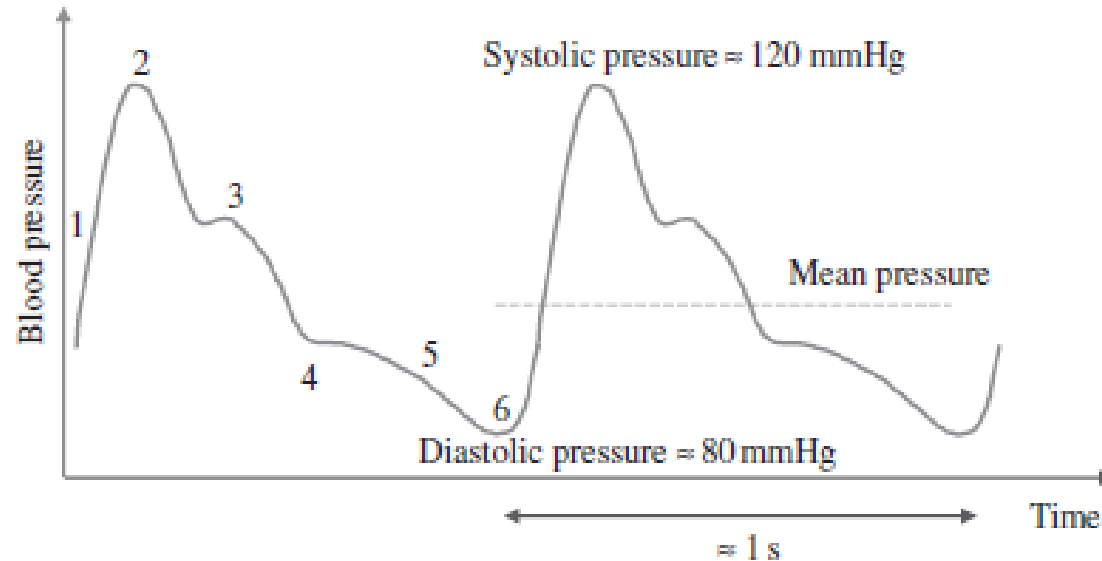


# PRESSÃO SANGUÍNEA



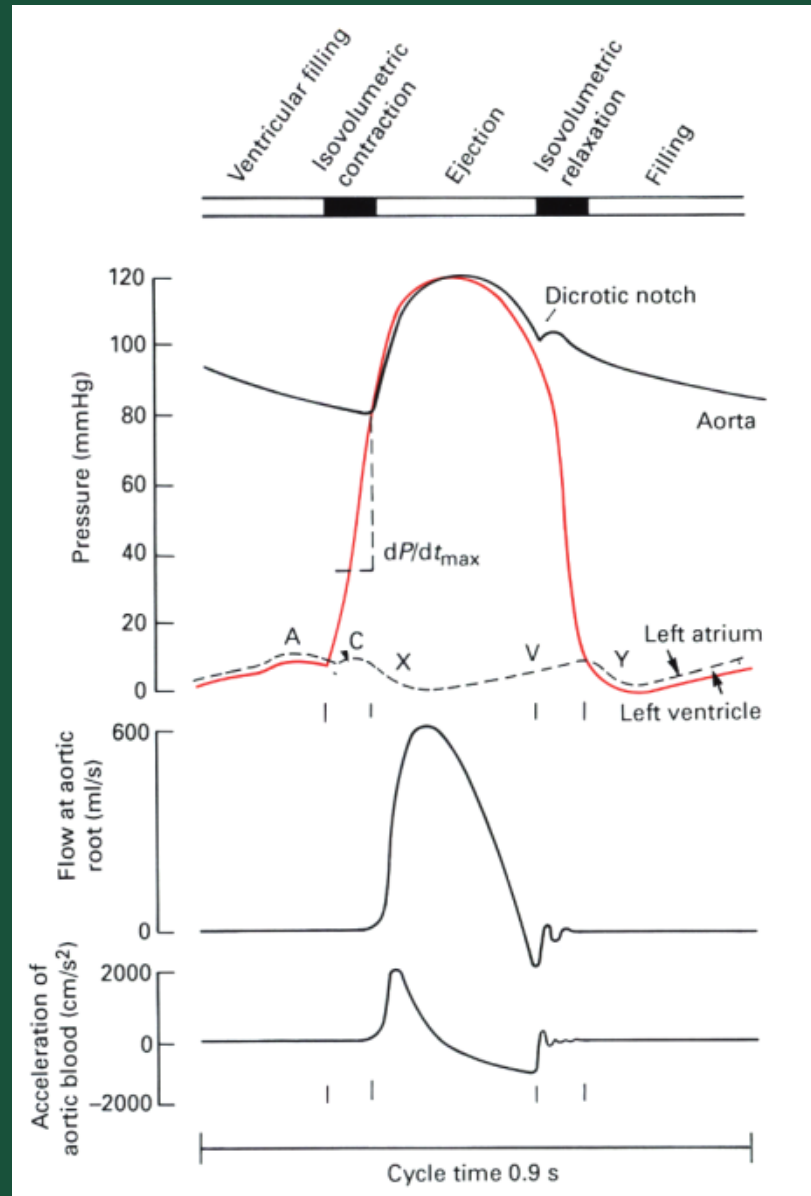
**Figure 6.1** Example of typical arterial pulses at (A) aorta and (B) femoral arteries. In addition to the profile changing of the arterial pulse along systemic and pulmonary circulation (C), pressure intensity also changes.

# PRESSÃO ARTERIAL

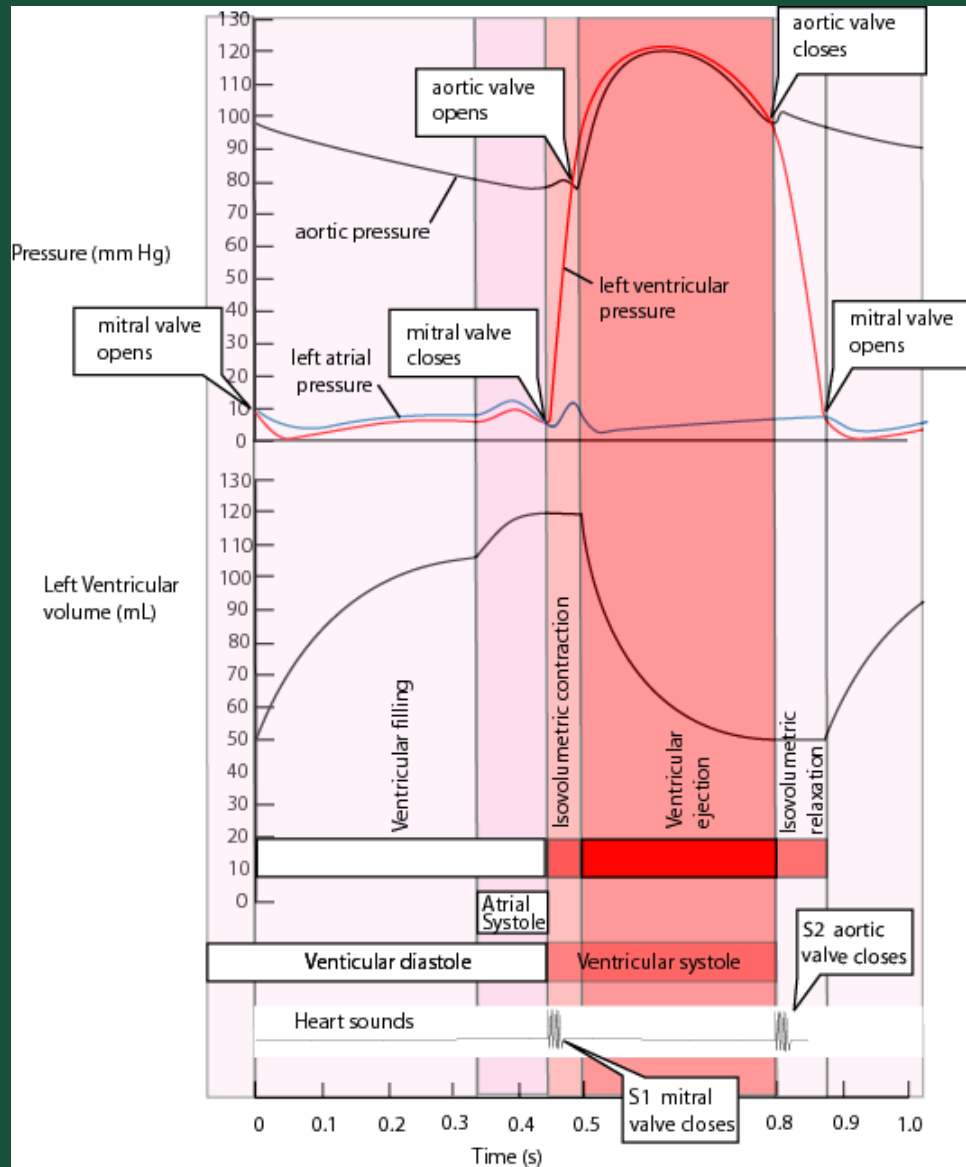


- 1- Systolic rise
- 2- Peak systolic pressure
- 3- Systolic descent
- 4- Aortic valve closure
- 5- Diastolic ramp
- 6- End diastolic pressure

# PRESSÃO SANGUÍNEA



# PRESSÃO SANGUÍNEA



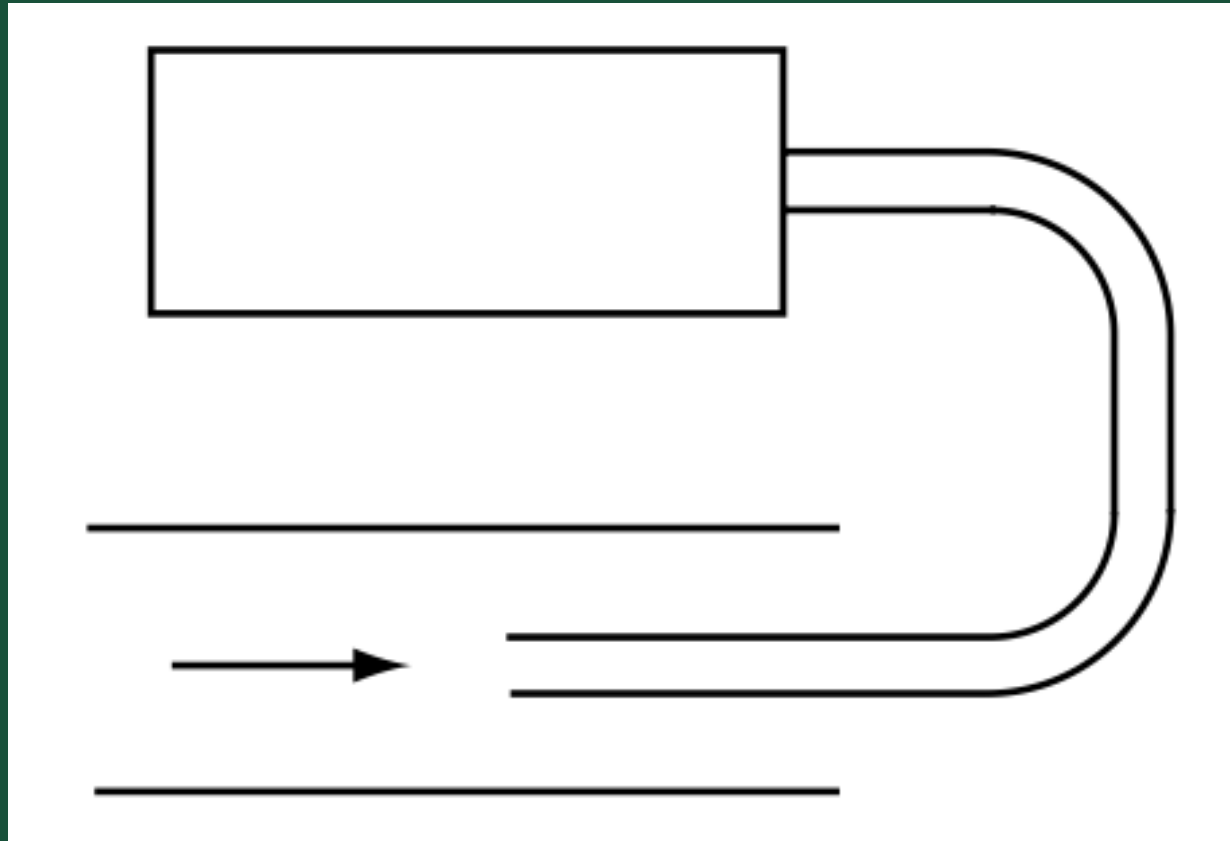
# PRESSÃO ARTERIAL PULMONAR



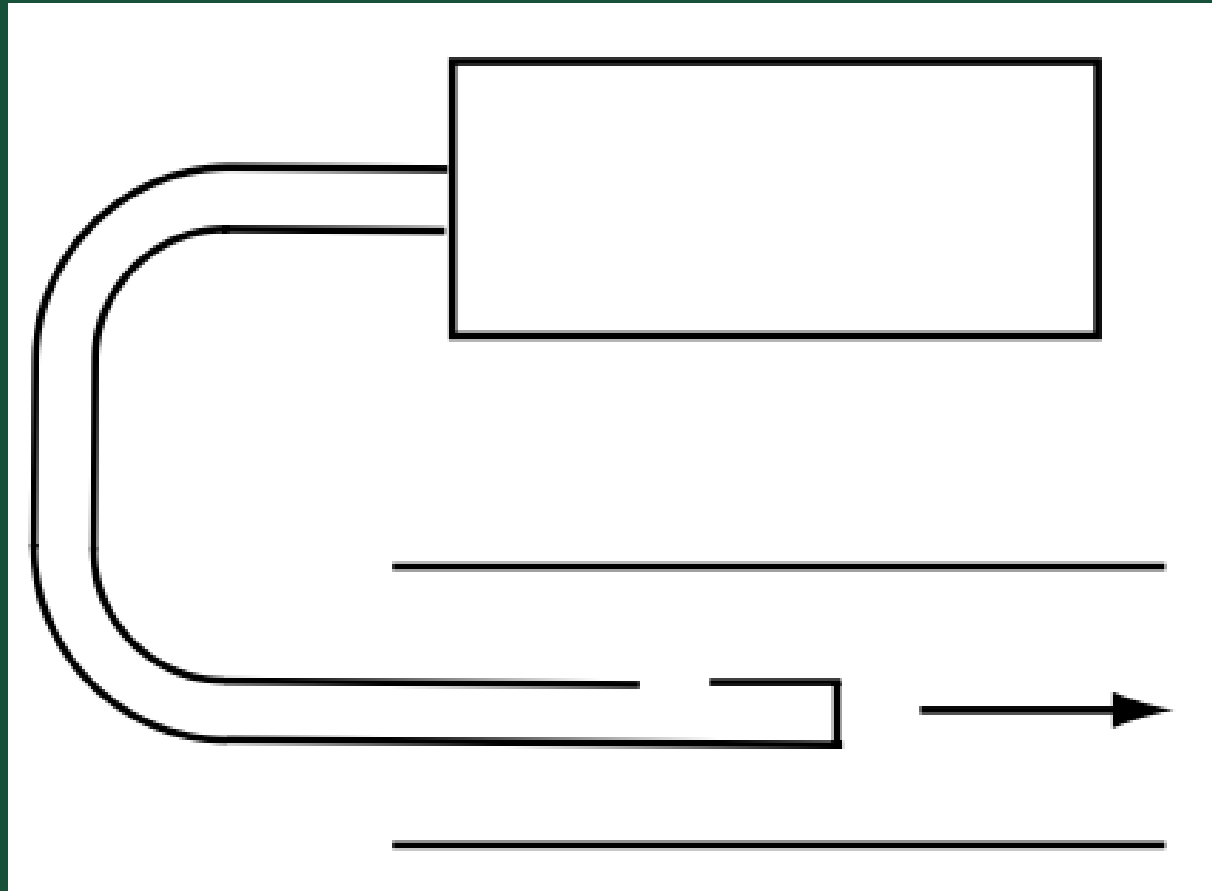
# TRANSDUTORES DE PRESSÃO

$$E = P + \rho \cdot g \cdot h + \frac{1}{2} \cdot \rho \cdot U^2$$

# TRANSDUTORES DE PRESSÃO



# TRANSDUTORES DE PRESSÃO



# TRANSDUTORES DE PRESSÃO

