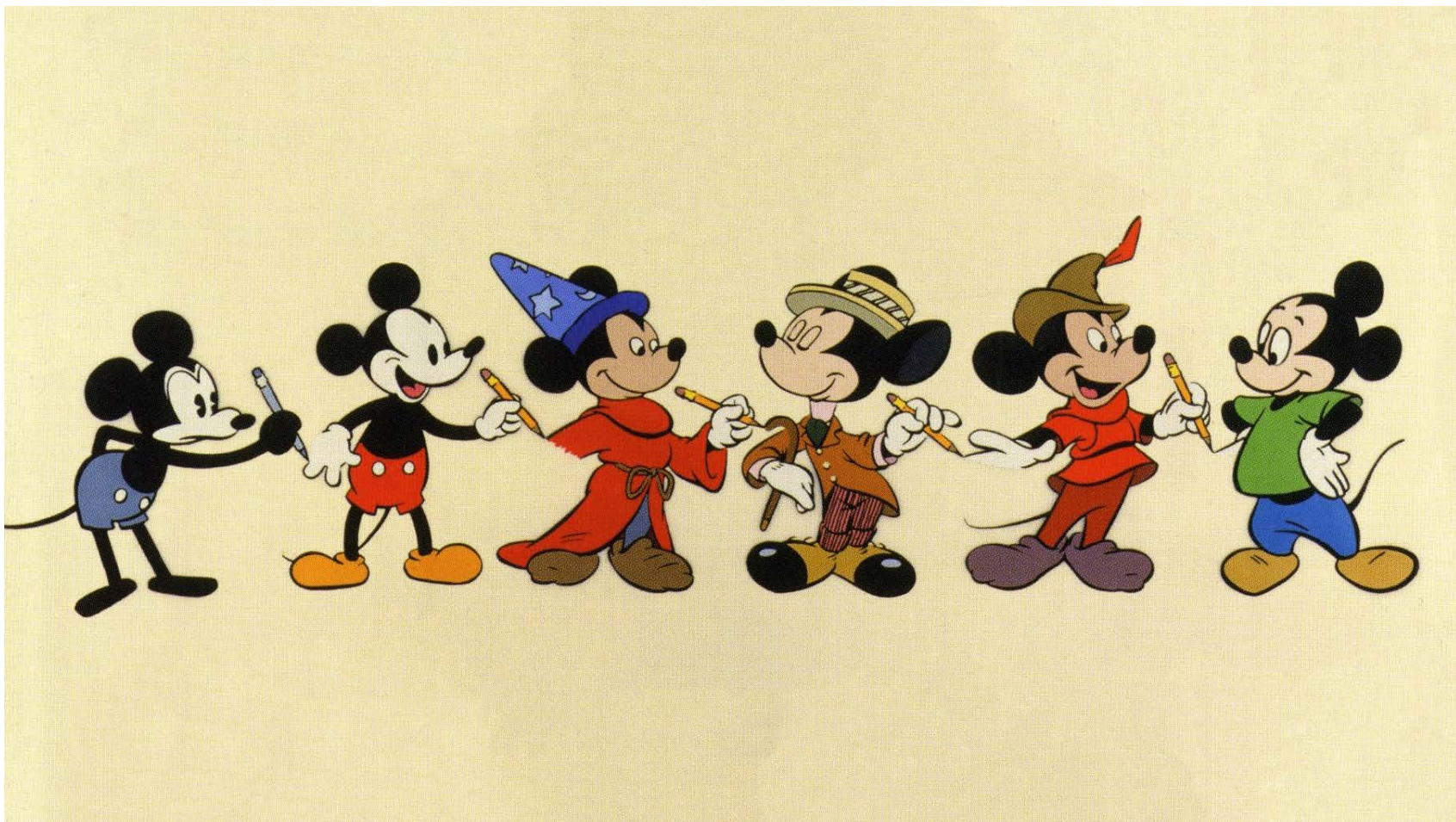


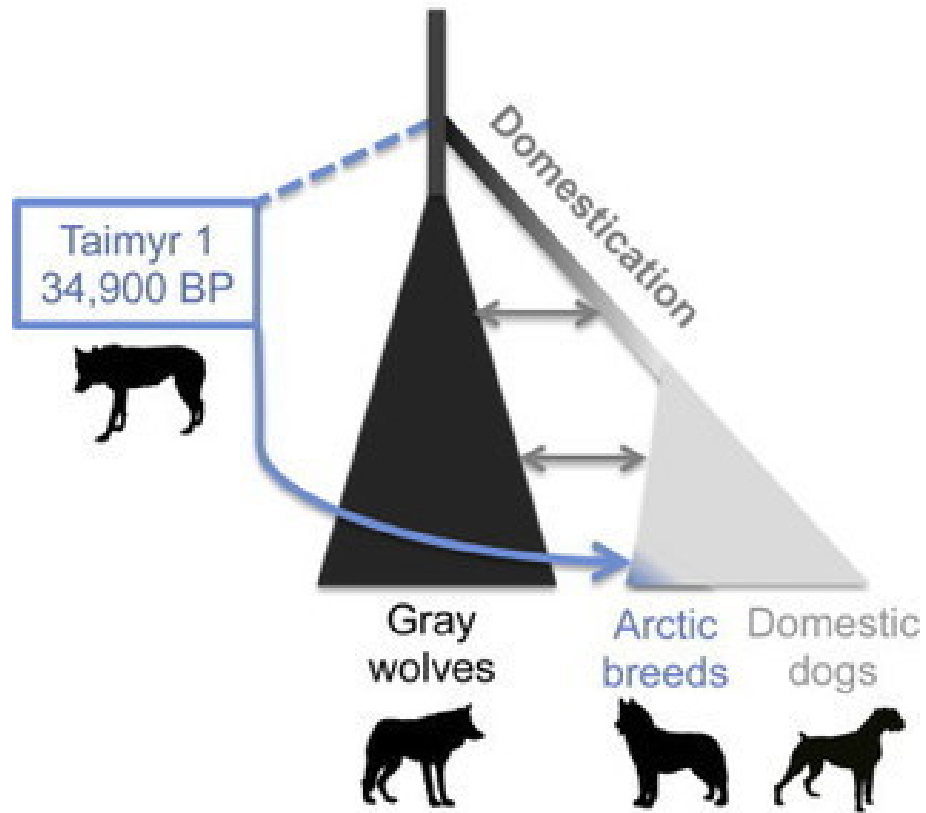
Evolução cultural – Mickey e cachorros

Evolução cultural – Mickey Mouse



O que mudou – por que?





The origins of man's best friend

- Migration with dated information
- - - Migration without dated information



SOURCE: Cell Research journal

TORONTO STAR GRAPHIC

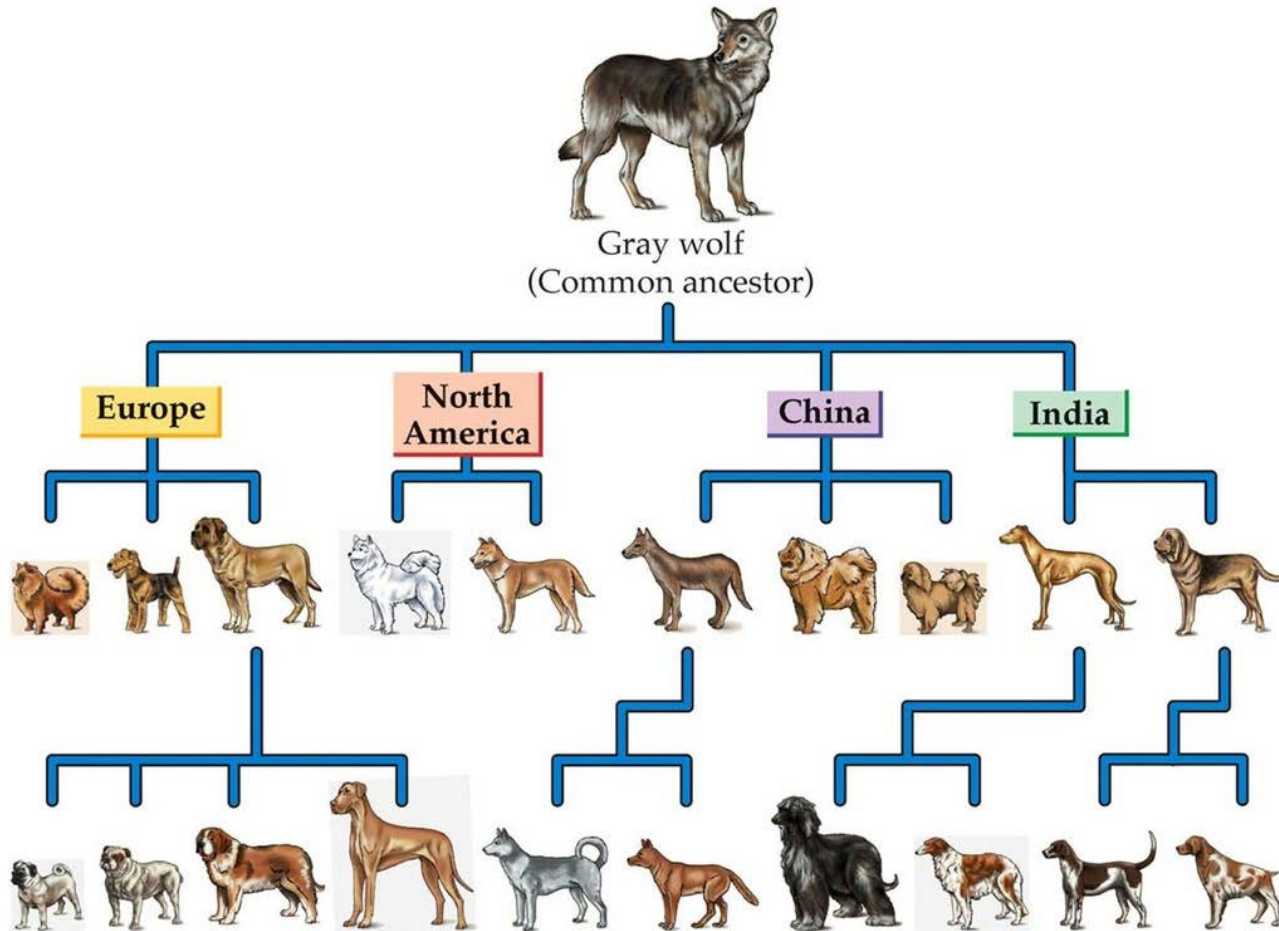
<http://dr-trish.com/article-the-evolution-of-dog-breeds/>

- This rapid evolution of dogs from wolves is an example of neoteny or paedomorphism, which are terms used to describe the rapid evolution of diverse dog breeds. As with many species, young wolves are more social and less dominant than adults; therefore, the selection for these characteristics, whether deliberate or inadvertent, is more likely to result in a simple retention of juvenile characteristics into adulthood than to generate a complex of independent new changes in behavior. (This is also true of many other domesticated animals.)
- This paedomorphic selection naturally results in retention of juvenile physical characteristics as well. Compared to wolves, many adult dog breeds retain such juvenile characteristics as soft fuzzy fur, round torsos, large heads and eyes, ears that hang down rather than stand erect, etc.; characteristics which are shared by most juvenile mammals. These characteristics generally elicit some degree of protective and nurturing behavior across species from most adult mammals, including humans, who see these characteristics as “cute” or “appealing”. The example of canine neoteny goes even further, as various breeds are differently neotenized according to the type of behavior that was selected.

Neoteny in dogs

- Veja
- <https://en.wikipedia.org/wiki/Neoteny>
- <http://www.dailydogdiscoveries.com/dog-word-of-the-day-neoteny/>

Cachorro



DISCOVER BIOLOGY, Second Edition, Chapter 21 Box © 2002 Sinauer Associates, Inc., and W. W. Norton and Company

