



CLIMATE POLICY INITIATIVE

NÚCLEO DE AVALIAÇÃO  
DE POLÍTICAS CLIMÁTICAS  
PUC-Rio

# DETERring Deforestation in the Brazilian Amazon: Environmental Monitoring and Law Enforcement

Climate Policy Initiative

Juliano Assunção  
Clarissa Gandour  
Romero Rocha

May 2013

CPI Report

## Descriptors

Sector	Land Use, Forestry	
Region	Brazil, Amazon	
Keywords	deforestation, conservation policies, law enforcement, command and control	
Contact	Juliano Assunção	<a href="mailto:juliano@cpirio.org">juliano@cpirio.org</a>

## Acknowledgements

Juliana Portella and Karla Gregório provided excellent research assistance. We thank the Brazilian Ministry of the Environment, and particularly Francisco Oliveira, for their continuous support. We are also grateful to Andrew Hobbs, Angela Falconer, Arthur Bragança, David Nelson, Dimitri Szerman, Elysha Rom-Povolo, Jane Wilkinson, Joana Chiavari, and Pedro Hemsley for helpful comments.

## About CPI

**Climate Policy Initiative** is a global policy effectiveness analysis and advisory organization. Its mission is to assess, diagnose, and support nations' efforts to achieve low-carbon growth. An independent, not-for-profit organization supported by a grant from the Open Society Foundations, CPI's headquarters are in the U.S., with offices and programs in Brazil, China, Europe, India, and Indonesia.

Copyright © 2013 Climate Policy Initiative [www.climatepolicyinitiative.org](http://www.climatepolicyinitiative.org)

All rights reserved. CPI welcomes the use of its material for noncommercial purposes, such as policy discussions or educational activities, under a [Creative Commons Attribution-NonCommercial-ShareAlike 3.0 Unported License](https://creativecommons.org/licenses/by-nc-sa/3.0/). For commercial use, please contact [admin@cpisf.org](mailto:admin@cpisf.org).



# DETERring Deforestation in the Brazilian Amazon: Environmental Monitoring and Law Enforcement

Juliano Assunção<sup>a,b,\*</sup>, Clarissa Gandour<sup>a</sup>, Romero Rocha<sup>a</sup>

<sup>a</sup>*Climate Policy Initiative Rio de Janeiro (CPI Rio) & Núcleo de Avaliação de Políticas Climáticas da PUC-Rio (NAPC/PUC-Rio)*

<sup>b</sup>*Department of Economics, PUC-Rio*

---

## Abstract

This paper evaluates the impact of monitoring on deforestation. It focuses on DETER, a satellite-based system for real-time detection of deforestation, which is the key tool for targeting law enforcement activities in the Brazilian Amazon. DETER cloud coverage, which limits satellite visibility, is shown to be correlated with environmental fines. Cloud coverage is then used as a source of exogenous variation in the number of fines for the estimation of the effect of monitoring on deforestation. Deforestation observed from 2007 through 2011 was 75% smaller than it would have been in the absence of fines. More stringent monitoring had no impact on municipality-level agricultural production.

*Keywords:* deforestation, conservation policies, law enforcement, command and control  
JEL codes: K42, Q18, Q23, Q58

---

---

\*Corresponding author. Phone number: +55 (21) 3527 2520. Address: Estrada da Gávea 50, 4º Andar, Gávea - Rio de Janeiro - RJ, 22451-263, Brazil.

*Email addresses:* [juliano@cpirio.org](mailto:juliano@cpirio.org) (Juliano Assunção), [clarissa@cpirio.org](mailto:clarissa@cpirio.org) (Clarissa Gandour), [romero.rocha@cpirio.org](mailto:romero.rocha@cpirio.org) (Romero Rocha)

## 1. Introduction

The Amazon is the world's largest rainforest, stretching over an area of more than 5 million square kilometers. In Brazil, the forest originally occupied over 4 million square kilometers – an area equivalent to almost half of continental Europe. Today, around 80% of the Brazilian Amazon remains covered by native vegetation, making it an important carbon sink. The Brazilian Amazon also holds unique biodiversity and 20% of the planet's fresh water (MMA (2012)). Protecting the Amazon from illegal deforestation and enforcing environmental regulation in the region is a challenge as immense as the forest itself. Yet, the pace of forest clearings appears to have lost momentum in recent years. Amazon deforestation rates escalated in the early 2000s, but after peaking at over 27,000 square kilometers in 2004, decreased sharply to about 5,000 square kilometers in 2011 (INPE (2012)).

This paper evaluates the contribution of command and control policies to the 2000s Amazon deforestation slowdown, estimating the impact of environmental monitoring and law enforcement on deforestation.<sup>1</sup> The Action Plan for the Prevention and Control of Deforestation in the Legal Amazon (PPCDAm) was the pivotal conservation policy effort of the mid-2000s. Launched in 2004, this tactical-operational plan integrated actions across different government institutions and proposed novel procedures for monitoring, environmental control, and territorial management.

One of the key changes introduced by the PPCDAm was the use of the Real-Time System for Detection of Deforestation (DETER). Developed by the National Institute for Space Research (INPE), DETER is a satellite-based system that captures and processes georeferenced imagery on forest cover in 15-day intervals. These images are used to identify deforestation hot spots and issue alerts signaling areas in need of immediate attention. The Brazilian Institute for the Environment and Renewable Natural Resources (Ibama), which operates as the national environmental police and law enforcement authority, targets law enforcement activities in the Amazon based on these alerts. Prior to the activation of DETER, Amazon monitoring depended on voluntary reports of threatened areas, making it difficult for Ibama to locate and access deforestation hot spots in a timely manner. With the adoption of the new remote sensing system, however, Ibama was able to better identify, more closely monitor, and more quickly act upon areas with illegal deforestation activity.

In addition to the adoption of DETER, the PPCDAm promoted institutional changes that enhanced monitoring and law enforcement capacity in the Amazon. These changes increased the number and qualification of law enforcement personnel, and brought greater

---

<sup>1</sup>The terms "command and control" and "monitoring and law enforcement" are used interchangeably throughout the text.

regulatory stability to the investigation of environmental crimes and application of sanctions. Overall, the command and control framework established by the PPCDAm, which relied heavily on satellite data, represented both an improvement in the targeting and an increase in the intensity of monitoring and law enforcement activities in the Amazon.

Were these policy efforts effective in containing forest clearings in the Amazon? How did they influence deforestation paths? Did they affect agricultural production? To answer these questions, we must first deal with a well-known endogeneity problem (Cameron (1988)). Because the allocation of law enforcement teams typically targets areas under greater risk of deforestation, the correlation between the presence of the enforcers and forest clearings is jointly determined by the risk-based targeting strategy and the potentially deterrent effect of command and control. Estimation of the causal effect of monitoring and law enforcement on deforestation therefore hinges on successfully disentangling the impact of the two determinants. The literature documents different methods for isolating these effects, particularly in a context of police force and crime. Examples include, but are not limited to, Levitt (1997), who identifies the causal effect of police on crime by using electoral cycles as an instrument for police presence, and Di Tella and Schargrodsky (2004) and Draca et al. (2011), who explore sporadic events (such as a terrorism attack) as exogenous sources of variation in police presence.

Our analysis draws on this literature, using an exogenous source of variation in the allocation of Ibama resources and personnel to capture the impact of stricter monitoring and law enforcement on deforestation. As the satellite used in DETER is incapable of detecting land cover patterns in areas covered by clouds, no deforestation activity is identified in these areas and, thus, no alerts are issued. Monitoring personnel therefore have a lower probability of being allocated to such areas. We exploit this characteristic of DETER to derive an empirical strategy that uses average DETER cloud coverage for a municipality in a given period as an instrument for the intensity of law enforcement activity in that municipality. The total number of fines applied by Ibama in the municipality serves as a proxy for this intensity.

We show that the number of fines systematically varies with DETER cloud coverage, even after controlling for observables and fixed effects. This finding validates our instrument's inclusion restriction. Yet, the fact that deforestation could be affected by rain – whether positively or negatively – raises concerns about our exclusion restriction. Since rainfall is correlated with clouds, we use data on observed local precipitation to control for rainfall, and thereby only consider cloud coverage that is orthogonal to rain in our estimations.

Typically, the police force and crime literature suffers from a tradeoff between identification and relevance, since circumstances that offer an empirical opportunity to explore the causal relationship are often very context-specific. This tends to force authors

to resort to additional assumptions for the extrapolation of their results (Di Tella and Schargrodsky (2004), Draca et al. (2011)). By contrast, our strategy allows us to identify a causal effect of environmental police (Ibama) presence on environmental crimes within a broader empirical context. Indeed, by construction, the strategy uses information for the entire Amazon, ensuring that our estimates are computed based on data for all areas where the problem is actually relevant.

Our findings show that an increase in the number of fines applied in a given year significantly reduces forest clearings the following year. In a counterfactual exercise, we estimate that, after the adoption of DETER-based monitoring, increased Ibama presence helped avoid approximately 59,500 square kilometers of forest clearings in the Amazon from 2007 through 2011. Compared to deforestation actually observed during this period, which totaled 41,500 square kilometers, our estimates indicate that recorded deforestation was 59% smaller than it would have been should the policy change not have occurred. In an analogous exercise, we estimate that, in a hypothetical scenario in which Ibama was entirely absent from the Amazon (as captured by the complete absence of environmental fines), an additional 122,700 square kilometers of Amazon forest would have been cleared from 2007 through 2011. In this case, observed deforestation was 75% smaller than total estimated deforestation for the period.

These results indicate that monitoring and law enforcement activities have a substantial deterrent effect on deforestation activity. Moreover, they highlight the crucial role played by the real-time monitoring and law enforcement system. Given Brazil's institutional setup, Ibama has greater capacity to apply severe penalties for illegal deforestation when it catches deforesters red-handed. This is particularly relevant for some of the legal sanctioning instruments available to Ibama – namely the establishment of embargoes and seizure of production goods, tools, and material – whose applicability depends on law enforcers being able to identify the responsible party and having access to seizable items. Although Brazilian environmental legislation allows for punishment of past deforestation, once an area has been cleared, it becomes a small part of the enormous contingent of illegally cleared land in Brazil. Effective punishment of illegal deforestation in such areas, where land and production property rights are unclear, has proven to be far more limited. The adoption of DETER-based monitoring and targeting of law enforcement significantly increased Ibama's capacity to identify and reach deforestation activity as it happens, thereby also increasing its ability to punish illegal deforestation.

In light of this, the finding that DETER cloud coverage systematically affects the application of environmental fines yields a pressing policy implication. It underlines the importance of overcoming DETER's inability to see through clouds as a means of further strengthening the control of illegal deforestation.

We perform a back-of-the-envelope cost-benefit analysis, comparing the sum of Ibama's

and INPE’s annual budgets with the estimated monetary benefits of preserving forest areas and thereby avoiding carbon dioxide emissions. We estimate that any price of carbon set above 0.76 USD/tCO<sub>2</sub> would more than compensate the cost of environmental monitoring and law enforcement in the Amazon.<sup>2,3</sup> Compared to the price of 5.00 USD/tCO<sub>2</sub> commonly used in current applications, these figures suggest that the presence of an active monitoring and law enforcement authority in the Amazon has the potential to yield significant net monetary gains. Furthermore, they highlight the value of strategically using available information and technology to combat illegal deforestation.

Our results contribute to the literature that evaluates effectiveness of environmental monitoring and law enforcement. Gray and Shimshack (2011) provides a recent survey of this literature. Most studies refer to plant-level environmental performance, as captured by standard emissions or accidental discharges (Epple and Visscher (1984), Magat and Viscusi (1990), Anderson and Talley (1995), Eckert (2004), Gray and Shadbegian (2005), Shimshack and Ward (2005), Earnhart and Segerson (2012)). Our paper addresses a different dimension of environmental monitoring and law enforcement, focusing on the impact of command and control policies on deforestation.

Our analysis also provides a better understanding of the determinants of the recent Brazilian Amazon deforestation slowdown. There is a substantial stream of literature documenting the impact of long-run socioeconomic drivers of deforestation activity in the Amazon, such as population, road density, and agroclimatic characteristics (Reis and Margulis (1991), Reis and Guzmán (1994), Pfaff (1999), Chomitz and Thomas (2003)). However, there is still scarce empirical evidence on the immediate drivers of the sharp decrease in Amazon deforestation observed starting in the mid-2000s. Hargrave and Kiskatos (2010) find a negative relationship between fire intensity and deforestation in the Amazon, but do not adequately address endogeneity issues in their work. Assunção et al. (2012) estimate that, even when controlling for commodity prices and relevant fixed effects, conservation policies introduced in the second half of the 2000s helped avoid over 60,000 square kilometers of forest clearings in the Amazon. This paper complements their findings by isolating the command and control policy channel and showing that monitoring and law enforcement were particularly effective in curbing Amazon deforestation compared to other recent conservation efforts adopted in Brazil.

Additionally, we investigate potential adverse effects of the command and control policy change on municipality-level agricultural production. Our estimates suggest that the more stringent monitoring and law enforcement efforts had no significant impact

---

<sup>2</sup>Estimations are based on a conversion factor of 10,000 tC/km<sup>2</sup> (36,700 tCO<sub>2</sub>/km<sup>2</sup>), as established in DPCD/MMA (2011).

<sup>3</sup>This exercise uses the avoided deforestation results from the simulation in which Ibama is entirely absent from the Amazon region to account for the deterrent effect of monitoring and law enforcement as a whole, and not only that of the command and control policy change.

on local agricultural GDP. Combined, our results show that DETER-based monitoring and law enforcement played a crucial role in curbing Amazon deforestation, and thereby containing carbon dioxide emissions, without adversely affecting municipality-level agricultural production. This suggests that it is possible to protect the native forest without significantly interfering with local agricultural production.

Other studies have explored the relationship between income and forest preservation, but no consensus has been established in the literature. Cropper and Griffiths (1994) and Panayotou (1995) find no significant relationship between the two, while Antle and Heidebrink (1995) document a positive relationship between afforestation and income, but only for income levels above a certain threshold. Foster and Rosenzweig (2003) provide evidence of there being no relationship between forest cover and economic growth in open economies, but a positive relationship in closed ones. From a general perspective, our results contribute to the debate about the relationship between economic growth and the environment (Grossman and Krueger (1995), Arrow et al. (1996)).

The remainder of this paper is organized as follows. Section 2 describes the institutional context, as well as Amazon monitoring and law enforcement policies implemented within the PPCDam framework. Section 3 details the empirical strategy used to identify the causal effect of police presence on deforestation. Section 4 introduces the data and descriptive statistics. Section 5 discusses results for the impact of DETER cloud coverage on the number of fines, the effect of the number of fines on deforestation, and the potential relationship between conservation policies and agricultural production. It also presents some robustness checks. Section 6 concludes with final remarks.

## **2. Institutional Context**

Since its creation in February 1989, Ibama has been responsible for environmental monitoring and law enforcement in Brazil. It both operates as an environmental police force, investigating environmental infractions and applying administrative sanctions, and executes environmental policy actions concerning environmental licensing, quality control, and impact, as well as the generation and spread of environmental information. As the country’s leading figure in environmental monitoring, Ibama plays a central role in the control and prevention of Amazon deforestation.

The strengthening of command and control has been a key policy effort of the Brazilian Ministry of the Environment (MMA) since the mid-2000s. Launched in 2004, the PPCDam marked the beginning of a novel approach towards combating deforestation in the Brazilian Amazon. It integrated actions across different government institutions and proposed innovative procedures for monitoring, environmental control, and territorial management. Changes to command and control constituted an important part of the PPCDam’s tactical-operational strategy. One such change was the major leap forward



in remote sensing-based Amazon monitoring capacity brought about by the implementation of DETER. Figure 1 shows how deforestation is captured by DETER in satellite imagery. The system, capable of detecting deforested areas larger than 25 hectares, portrays forested and deforested areas in different colors, such that, for any given location, recent images are compared with older ones to identify changes in forest cover. The imagery is prepared and distributed in the form of georeferenced digital maps, which are then used to locate deforestation hot spots and issue alerts signaling areas in need of immediate attention.

[Figure 1 about here.]

Since its implementation in 2004, DETER has been heavily used to target law enforcement activities in the Amazon. Prior to the activation of the real-time remote sensing system, Amazon monitoring depended on voluntary and anonymous reports of threatened areas. This made it very difficult for Ibama to identify and access deforestation hot spots in a timely manner. Yet, with the adoption of DETER, Ibama was given speedier access to recent georeferenced data, and was thus able to better identify and more quickly act upon areas with illegal deforestation activity.

The PPCDAm also promoted institutional changes that enhanced command and control capabilities in the Amazon. Ibama sought to improve the qualification of its personnel through the establishment of stricter requirements in its recruitment process. This led to an increase in both the number and quality of monitoring personnel. Additionally, Ibama's law enforcement efforts gained greater legal support with the passing of Presidential Decree 6,514 in July 2008, which reestablished directives for the investigation of environmental infractions and application of sanctions. The decree determined the administrative processes for sanctioning environmental crimes in more detail than had been previously incorporated in legislation, which increased both the clarity and speed of such processes. It also regulated the use of both old and new instruments for the punishment of environmental fines, including fines, embargoes, seizure and destruction of production goods, tools and material, and arrest, among others. Last, but not least, the decree established the public release of a list identifying landowners of areas under embargo. These measures not only increased the robustness of sanctions and the safety of law enforcement agents, but also brought greater regulatory stability to the administrative processes for the investigation and punishment of environmental crimes.

Another relevant command and control effort of the late 2000s was the signing of Presidential Decree 6,321 in December 2007, which established the legal basis for singling out municipalities with intense deforestation activity and taking differentiated action towards them. These municipalities, selected based on their deforestation history, were classified as in need of priority action to prevent, monitor, and combat illegal deforestation. Exiting

the list of priority municipalities was conditioned upon significantly reducing deforestation. In addition to concentrating a large share of Ibama’s attention and monitoring efforts, priority municipalities became subject to a series of other administrative measures that did not necessarily stem from command and control policy. Examples include, but are not limited to, harsher licensing and georeferencing requirements, revision of private land titles, compromised political reputation for mayors of priority municipalities, and economic sanctions applied by agents of the commodity industry. Consequently, the impact of being added to the list of priority municipalities could be broader than that of increased monitoring and law enforcement. Our empirical analysis takes this potentially broader impact into consideration.

Overall, the policy efforts adopted starting in the mid-2000s improved, intensified, and more accurately targeted command and control efforts in the Brazilian Amazon. This paper aims at measuring the impact of the more stringent DETER-based monitoring and law enforcement policy on deforestation. To do this, we must isolate the effect of other relevant potential drivers of the deforestation slowdown, particularly that of the priority municipalities policy, which involved sanctions unrelated to command and control.

### 3. Empirical Strategy

This section describes the empirical strategy used to identify the causal effect of Ibama’s presence on Amazon deforestation. As we only observe an equilibrium situation – the number and value of fines applied by Ibama once the environmental crime has already been committed – we face a serious problem of simultaneity in addition to the usual empirical problems of omitted variables. We follow the literature on the effect of police presence on crime in aiming to address endogeneity.

The majority of studies concerning the environment and law enforcement attempt to solve the endogeneity problem by estimating the impact of the lagged enforcement variable on current environmental outcome (Magat and Viscusi (1990), Shimshack and Ward (2005), Shimshack and Ward (2008)). In our case, this means capturing the effect of the number of environmental fines applied by Ibama in year  $t-1$  on deforestation recorded in year  $t$ . For literature comparison purposes, we test this type of specification in our empirical investigation. However, we do not consider this method to be a satisfactory solution to the endogeneity problem, because it does not allow for a potential persistence of deforestation activity.

We propose a new strategy to tackle endogeneity. As explained in Section 2, Ibama allocates its monitoring personnel based on alerts issued by DETER. Due to DETER’s inability to detect land cover patterns beneath clouds, law enforcers have a lower chance of being allocated to areas that are covered by clouds during remote sensing, even if deforestation activity is occurring in these areas. We therefore argue that average an-

nual DETER cloud coverage at the municipality level is a source of exogenous variation in the presence of law enforcement personnel in Amazon municipalities. Thus, we use DETER cloud coverage as an instrument for Ibama presence, as proxied by the number of environmental fines applied in each municipality by the Brazilian environmental police authority.

Is this a valid instrument? If so, it must be uncorrelated with the error term in the deforestation equation, conditional on all observable variables. There are two relevant scenarios in which this condition would be violated in our empirical setup: (i) if there is correlation between cloud coverage and rainfall, which, in turn, may be correlated with deforestation; and (ii) if there is correlation between DETER cloud coverage and cloud coverage affecting the satellite used to measure annual Amazon deforestation. The availability of relevant observable variables helps make the case for our instrument's validity.

We address the first scenario by using rainfall data compiled by Matsuura and Willmott (2012) to control for precipitation at the municipality level in all our specifications. The second scenario merits a more detailed discussion. Annual Amazon deforestation is recorded by INPE's Project for Monitoring Deforestation in the Legal Amazon (PRODES) based on interpretation of satellite imagery. Much like the satellite used in DETER, the one used in PRODES suffers from an inability to detect forest clearings beneath cloud coverage. Potential correlation between DETER cloud coverage and PRODES cloud coverage therefore raises an important concern. We use two complementary approaches to tackle this issue. First, we control for PRODES cloud coverage, such that our coefficients are estimated considering only DETER cloud coverage that is orthogonal to PRODES cloud coverage. Second, we explore the fact that PRODES collects imagery between the 1<sup>st</sup> of June and the 29<sup>th</sup> of August of a given year, while DETER collects imagery every 15 days. We conduct a robustness check by replacing our original instrument with a measure of average DETER cloud coverage that excludes data from the PRODES period of remote sensing. Specifications using this alternative instrument also include PRODES cloud coverage as a control.

Having controlled for precipitation and PRODES cloud coverage, we argue that the only remaining channel through which DETER cloud coverage could be correlated with deforestation is that of the allocation of Ibama law enforcement resources.

Our strategy also considers other potential causes of concern. First, because deforestation has been shown to be strongly correlated with agricultural commodity prices, we control for relevant crop and cattle prices. We follow Assunção et al. (2012) and include prices for both the previous year and the first semester of each current year. Second, we control for priority municipalities and protected areas to account for other relevant conservation policies that were introduced during our period of interest. Finally, there

are important municipality and time fixed effects that could influence both deforestation and monitoring and law enforcement. We take advantage of the panel structure of our data to control for these fixed effects.

In our first stage, the estimation equation is given by:

$$Fines_{it} = \beta_1 DETERclouds_{it} + \beta_2 Rain_{it} + \beta_3 PRODESclds_{it} + \sum_k \beta_k X_{itk} + \alpha_i + \phi_t + \epsilon_{it} \quad (1)$$

where  $Fines_{it}$  is the number of environmental fines applied by Ibama in municipality  $i$  and year  $t$ ;  $DETERclouds_{it}$  is average annual DETER cloud coverage for municipality  $i$  and year  $t$ ;  $Rain_{it}$  is precipitation for municipality  $i$  and year  $t$ ;  $PRODESclds_{it}$  is PRODES cloud coverage for municipality  $i$  and year  $t$ , as measured during the period of PRODES remote sensing;  $X_{it}$  is a vector of controls including other conservation policies and agricultural commodity prices;  $\alpha_i$  is the municipality fixed effect;  $\phi_t$  is the year fixed effect; and  $\epsilon_{it}$  is the idiosyncratic error.

In our second stage, we include the lagged number of fines and, thus, lagged values for DETER cloud coverage. As we intend to capture DETER cloud coverage that is correlated with the allocation of law enforcers, but uncorrelated with deforestation through all other channels, we must also control for lagged precipitation. No lags are included for the other variables. Hence, the estimation equation is given by:

$$Deforestation_{it} = \gamma_1 Fines_{i,t-1} + \gamma_2 Rain_{i,t-1} + \gamma_3 PRODESclds_{it} + \sum_k \gamma_k X_{itk} + \psi_i + \lambda_t + \xi_{it} \quad (2)$$

where  $Deforestation_{it}$  is the normalized deforestation increment in municipality  $i$  and year  $t$ ;  $Fines_{i,t-1}$  is instrumented by  $DETERclouds_{i,t-1}$ ;  $\psi_i$  is the municipality fixed effect;  $\lambda_t$  is the year fixed effect; and  $\xi_{it}$  is the idiosyncratic error.  $PRODESclds_{it}$  and  $X_{it}$  are as in equation 1.

Standard errors in all specifications are clustered at the municipality level, making them robust to heteroscedasticity and serial correlation (Bertrand et al. (2004)).

#### 4. Data

Our empirical analysis is based on a 2007 through 2011 municipality-by-year panel data set.<sup>4</sup> The initial sample includes all 553 municipalities located partially or entirely

---

<sup>4</sup>As discussed in Section 3, our strategy uses lagged DETER cloud coverage as an instrument for the lagged number of environmental fines. Because DETER cloud coverage data is only available starting in 2006, our sample must begin in 2007.

within the Amazon Biome. Lack of data for 6 municipalities imposes a first sample restriction. As variation in forest cover is required for the normalization of our main dependent variable (normalized annual deforestation increment – see detailed description of variable construction below), the sample is further restricted to municipalities that portray such variation. The final sample comprises 526 municipalities.

The following sections describe our variables of interest and present some descriptive statistics.

#### 4.1. Deforestation

We define deforestation as the annual deforestation increment – the area of forest cleared over the twelve months leading up to August of a given year. Thus, the annual deforestation increment of year  $t$  measures the area of forest, in square kilometers, deforested between the 1<sup>st</sup> of August of  $t - 1$  and the 31<sup>st</sup> of July of  $t$ . Deforestation data are built from satellite-based images that are processed and publicly released by PRODES/INPE. The annual data capture total forest area cleared at the municipality level in a twelve-month period.

Sample municipalities exhibit a significant amount of cross-sectional variation in deforestation due to heterogeneity in municipality size. We therefore use a normalized measure of the annual deforestation increment to ensure that our analysis considers relative variations in deforestation increments within municipalities. The variable is constructed according to the following expression:

$$Deforestation_{it} = \frac{ADI_{it} - \overline{ADI}_{it}}{sd(ADI_{it})} \quad (3)$$

where  $Deforestation_{it}$  is the normalized annual deforestation increment for municipality  $i$  and year  $t$ ;  $ADI_{it}$  is the annual deforestation increment measured in municipality  $i$  between the 1<sup>st</sup> of August of  $t - 1$  and the 31<sup>st</sup> of July of  $t$ ; and  $\overline{ADI}_{it}$  and  $sd(ADI_{it})$  are, respectively, the mean and the standard deviation of the annual deforestation increment calculated for each  $i$  over the 2002 through 2011 period.<sup>5</sup> We use the log of  $ADI_{it}$  as dependent variable in alternative specifications to test whether results are driven by our choice of normalization technique.

For any given municipality, cloud coverage during the period of remote sensing may prevent the PRODES satellite from capturing land cover imagery. Forest areas that were cleared in a given year, but were blocked from view by clouds during remote sensing, are not incorporated into that year’s deforestation increment figure. These areas are only

---

<sup>5</sup>We take advantage of available municipality-level deforestation data for non-sample years to calculate the mean and the standard deviation of the annual deforestation increment in a longer panel. For comparison, we also estimate all specifications using the mean and standard deviation over the 2007 through 2011 period for the normalization of our dependent variable.

accounted for when they eventually show up on PRODES imagery. Variables indicating PRODES cloud coverage and unobservable areas, both of which are made publicly available by PRODES/INPE, are included in all regressions to control for measurement error.

#### *4.2. Law Enforcement*

We use the total number of fines applied as sanctions for environmental crimes in each municipality as a measure of the intensity of monitoring and law enforcement at the municipality level. The data are publicly available from Ibama.

It is worth highlighting that the knowingly low collection rates for environmental fines applied in Amazon municipalities do not interfere with our analysis (Hirakuri (2003), Brito and Barreto (2008), Barreto et al. (2008), Brito (2009)). These fines are often accompanied by other sanctioning instruments that are more binding, such as seizure and destruction of production goods, tools and materials, and embargoes of production areas. Because panel data for the use of these instruments are not available, we use the number of fines as a proxy for command and control efforts as a whole. Essentially, we are interested in exploring fines as a means of capturing the effect of environmental police (Ibama) presence – not of the sanctioning instrument itself – on deforestation.

To maintain consistency across our panel data, we consider the PRODES year – August 1<sup>st</sup>,  $t - 1$  through July 31<sup>st</sup>,  $t$  – as the relevant unit of time in our sample. Thus, for each municipality, the total number of fines in a given year captures all fines applied in that municipality in the twelve months leading up to August of that year.

#### *4.3. Cloud Coverage*

As explained in Section 2, georeferenced data on deforestation activity produced by DETER are used to identify deforestation hot spots and issue alerts that serve to target law enforcement activity. Figure 2 shows examples of maps containing both cloud coverage and alerts captured by DETER. In addition to portraying the high degree of within-year variation in DETER cloud coverage, the figure also clearly illustrates DETER’s inability to detect land cover pattern in areas covered by clouds – typically, no deforestation activity is captured and no deforestation alerts are issued in these areas. This supports our perception that the allocation of Ibama personnel is directly affected by DETER cloud coverage, such that law enforcers are less likely to be present in areas that are systematically under greater cloud coverage.

[Figure 2 about here.]

We are interested in exploring how DETER cloud coverage affects Ibama presence in the Amazon. To do this, we use georeferenced data from DETER/INPE that map cloud

coverage over the Amazon throughout the year. When visibility is at least partial, these maps show exactly which areas were covered by clouds (see Figure 2). When visibility is too precarious to derive information about land cover, however, no map is produced – we assume DETER cloud coverage to be complete in this case. We use the 15-day periodical data to calculate, for each sample municipality and year, average DETER cloud coverage for that municipality and year both in absolute (square kilometers) and relative (share of total municipality area) terms. Again, the relevant unit of time is the PRODES year. We use this constructed variable as an instrument for the intensity of law enforcement activity in each Amazon municipality.

We note that although DETER was implemented in 2004, the first georeferenced DETER maps to be made publicly available refer to 2006. This implies our sample must start in 2007.

#### *4.4. Additional Controls*

We include a series of variables to control for other potentially relevant determinants of deforestation, namely rainfall, agricultural commodity prices, and other conservation policies.

First, there is no consensus in the literature as to how deforestation and precipitation are related. On the one hand, forest clearings are often concentrated in dry seasons, when it is easier to penetrate and burn the forest. On the other hand, the cutting down of forests may itself affect the region’s microclimate and precipitation patterns (Negri et al. (2004), Aragão et al. (2008), Saad et al. (2010)). Although understanding this relationship in detail is out of the scope of this paper, we include a measure of total precipitation in each sample municipality to account for the effect of rainfall on forest clearing activities. We do so by using annual precipitation data compiled by Matsuura and Willmott (2012), who draw on worldwide climate data to calculate a regular georeferenced world grid of estimated precipitation over land. Their estimations are based on a variety of sources for geographic extrapolations of rainfall data collected at weather stations. Using this georeferenced grid, we estimate total precipitation in each municipality according to the following rule: (i) for municipalities that overlap with only one grid node, we use the precipitation value for that grid node as municipality precipitation; (ii) for municipalities that overlap with two or more grid nodes, we consider all node values and use their average precipitation as municipality precipitation; (iii) for municipalities that have no overlap with any grid nodes, we take the area of a 28-kilometer buffer around the municipality and consider the average precipitation of all grid nodes that fall within this buffer area as municipality precipitation; and (iv) for the few municipalities whose 28-kilometer buffer do not overlap with any grid nodes, we use the precipitation value for the nearest grid

node as municipality precipitation.<sup>6</sup>

For the second set of controls, we consider agricultural commodity prices, which have been shown to be drivers of deforestation (Panayotou and Sungsuwan (1994), Barbier and Burgess (1996), Angelsen and Kaimowitz (1999), Assunção et al. (2012)). As agricultural prices are endogenous to local agricultural production and, thus, local deforestation activity, we must construct output price series that capture exogenous variations in the demand for agricultural commodities produced locally. As argued in Assunção et al. (2012), agricultural commodity prices recorded in the southern Brazilian state of Paraná are highly correlated with average local crop prices for Amazon municipalities. We follow the authors and collect commodity price series at the Agriculture and Supply Secretariat of the State of Paraná (SEAB-PR). The set of commodities includes beef cattle, soybean, cassava, rice, corn, and sugarcane.<sup>7</sup>

The Paraná price series are used to build two price variables. The first, an annual index of crop prices, is constructed in three steps. In step one, we calculate nominal annual prices by averaging nominal monthly prices for each calendar year and culture. Annual prices are deflated to year 2000 Brazilian reais and are expressed as an index with base year 2000.

In step two, we calculate a weighted real price for each crop according to the following expression:

$$PPA_{itc} = PP_{tc} * A_{ic,2004-2005} \quad (4)$$

where  $PPA_{itc}$  is the weighted real price of crop  $c$  in municipality  $i$  and year  $t$ ;  $PP_{tc}$  is the Paraná-based real price of crop  $c$  in year  $t$ ; and  $A_{ic,2004-2005}$  is the share of municipal area used as farmland for crop  $c$  in municipality  $i$  averaged over the 2004 through 2005 period.<sup>8</sup> The latter term captures the relative importance of crop  $c$  within municipality  $i$ 's agricultural production in years immediately preceding the PPCDAm. It serves as a municipality-specific weight that introduces cross-sectional variation in the commodity price series.

In the third and final step, we use principal component analysis on the weighted real crop prices to derive the annual index of crop prices. This technique allows price variations that are common to the five selected crops to be represented in a single measure. As the resulting index maximizes the price variance, it represents a more comprehensive

---

<sup>6</sup>Buffer size was chosen based on the size of grid nodes – 28 kilometers is equivalent to half the distance between grid nodes.

<sup>7</sup>Soybean, cassava, rice, and corn are predominant crops in terms of harvested area in the Legal Amazon. Although not a predominant crop in the region, sugarcane is also included to account for concerns about the recent expansion of Brazilian ethanol biofuel production. Together, the five crops account for approximately 70% of total harvested area averaged across the 2000s.

<sup>8</sup>Variables on annual harvested area at the municipality level are constructed based on data from the Municipal Crop Survey of the Brazilian Institute for Geography and Statistics (PAM/IBGE).



measure of the agricultural output price scenario for this analysis than the individual prices themselves.

The second price variable is an annual index of cattle prices, which is derived analogously to  $PPA_{itc}$ . As land pasture is not observable,  $A_{ci,2004-2005}$  is the ratio of heads of cattle to municipal area in municipality  $i$  averaged over the 2004 through 2005 period. Although most of our variables are constructed to fit the PRODES year time frame, agricultural price series are expressed in calendar years.

Finally, we include controls for other relevant conservation policies implemented during the sample period. In particular, we account for total protected area in each municipality, including both conservation units and indigenous lands, and priority municipalities. As discussed in Section 2, priority municipalities were subject not only to stricter command and control, but also to other administrative measures with a potentially deterrent effect on deforestation. By including controls for these municipalities in our estimations, we ensure that the effect of changes in Ibama presence (captured via changes in the number of fines) is isolated from the effect of the other administrative measures adopted in priority municipalities.

#### 4.5. Trends and Descriptive Statistics

Stringency of law enforcement in the Amazon, as captured by the number of environmental fines, was on the rise since the early 2000s. Figure 3, which shows trends for the municipality-level average number of fines and deforestation from 2002 through 2011, illustrates this. While the average annual number of fines by municipality grew nearly sevenfold from 2002 through 2008, average annual deforested area declined by almost half in the same period. In the following years, the number of fines decreased alongside deforestation. Yet, the endogeneity problem discussed in Section 3 also affects the trends shown in Figure 3 – less deforestation implied less need for fines.

[Figure 3 about here.]

Table 1 presents the means and standard deviations for the variables used in our empirical analysis. The figures show that average DETER cloud coverage is high. Agricultural prices and production were rising during the period of interest, which could have pushed for greater deforestation via incentives to convert forest areas for agricultural activity. The extent of protected areas during the period show only minor variation from year to year.

[Table 1 about here.]

## 5. Results

This section presents results for first and second stage estimations, counterfactual exercises, and robustness checks.

### 5.1. Cloud Coverage, Monitoring, and Law Enforcement

We start by assessing the impact of average annual DETER cloud coverage on the presence of law enforcers at the municipality level, using the number of fines applied in each municipality as a proxy for Ibama presence in that municipality. Coefficients presented in Table 2 indicate that an increase in DETER cloud coverage significantly reduces the number of fines applied by Ibama as punishment for environmental infractions. Column 1 presents OLS coefficients estimated in a specification lacking controls. Columns 2 through 4 show coefficients estimated in specifications with the following controls: rainfall, PRODES cloud coverage, and non-observable areas during period of PRODES remote sensing (column 2); municipality and time fixed effects (column 3); priority municipality status, percentage of municipality area occupied by protected areas, current and lagged cattle prices, and current and lagged crop prices (column 4). Coefficients remain negative and significant at a 5% significance level in all specifications. Quantitatively, a 10 percentage point increase in DETER cloud coverage represents an average reduction of 0.9 in fines, which is equivalent to a 9% decrease in the total number of fines for our period of interest. Results suggest that DETER cloud coverage is strongly correlated with the number of fines applied by Ibama. This finding validates the first stage of our empirical strategy and indicates that our instrument is not weak.

[Table 2 about here.]

### 5.2. Monitoring, Law Enforcement, and Deforestation

Having shown that DETER cloud coverage and Ibama presence in Amazon municipalities are correlated, we move on to evaluate the impact of law enforcement efforts on deforestation. Coefficients shown in Table 3 capture the effect of the number of fines applied by Ibama on deforestation at the municipality level. Columns 1 and 2 present results for fixed effects regressions estimated by OLS using normalized deforestation as dependent variable. Column 1 includes controls for lagged rainfall, PRODES cloud coverage, non-observable areas during period of PRODES remote sensing, current and lagged cattle prices, and current and lagged crop prices. Column 2 adds controls for priority municipality status and percentage of municipality area occupied by protected areas. Columns 3 and 4 repeat the specifications of previous columns using 2SLS estimation with lagged DETER cloud coverage as an instrument for the lagged number of fines. Columns 5 and 6 repeat the specifications and estimation technique of columns 3 and 4 using the log of deforestation increment as an alternative dependent variable.

Results for OLS estimation suggest that, for a given year, the total number of fines in a municipality does not significantly affect deforestation the following year. Coefficients estimated using instrumental variable specifications, however, show that OLS results are biased. The use of the lagged law enforcement variable in OLS specifications did not

adequately solve the endogeneity problem that affects the estimation of the causal impact of police presence on crime. By contrast, 2SLS results indicate that, when instrumented by average annual DETER cloud coverage, a greater number of fines in a given year will significantly reduce deforestation the following year. This is evidence that more stringent monitoring and law enforcement effectively curb deforestation. These results are consistent with specifications that use the log of the deforestation increment as an alternative dependent variable, indicating that our main results are not driven by our choice of normalization.<sup>9</sup>

[Table 3 about here.]

To better understand the magnitude of this effect, we conduct two counterfactual simulations to estimate total sample deforestation in hypothetical scenarios that differ from the observed reality. In the first simulation, we assume that the annual number of fines in each municipality from 2007 through 2011 was equal to that observed in 2003, the year immediately preceding the launch of the PPCDAm. In doing so, we recreate a scenario in which monitoring and law enforcement policy stringency remained unchanged after the implementation of the PPCDAm. We then estimate the annual deforestation trend for this hypothetical scenario. Table 4 presents both observed and estimated annual deforestation figures. It shows that, had command and control policy remained unchanged, the Amazon Biome would have seen over 101,000 square kilometers of deforestation from 2007 through 2011. Compared to the 41,500 square kilometers of deforestation actually observed in our sample during this period, results suggest that the command and control policy change preserved over 59,500 square kilometers of forest area.

In the second simulation, we assume that no fines were applied in all municipalities from 2007 through 2011. This scenario captures the complete absence of monitoring and law enforcement in the Amazon. Table 4 again presents both observed and estimated annual deforestation figures. We estimate that, without monitoring and law enforcement activities, over 164,200 square kilometers of forest would have been cleared in the 2007 through 2011 period. Compared to observed deforestation, results indicate that such activities preserved more than 122,700 square kilometers of forest area.

[Table 4 about here.]

This is a very substantial effect in both absolute and relative terms. It shows that command and control policies were effective in curbing deforestation in the Brazilian

---

<sup>9</sup>Coefficients estimated using the mean and standard deviation of deforestation over the 2007 through 2011 period are consistent with those shown. These alternative results are not reported in this paper, but are available from the authors upon request.

Amazon. Unlike several other empirical exercises in the police force and crime literature, which mostly explore context-specific circumstances and require additional assumptions for the extrapolations of their results (such as Di Tella and Schargrodsky (2004) and Draca et al. (2011)), our strategy analyzes policies that were actually put into practice in the full extent of our area of interest. This allows us to identify a causal effect of environmental police presence on environmental crimes within the empirical context that is actually relevant for policy design.

Combined, our results yield important policy implications. The impressive deterrent effect of command and control policies was achieved despite the relatively restricted resources (only 3,000 Ibama law enforcement agents) available to cover an area as vast as the Amazon Biome. We also find that the total amount of avoided deforestation attributed to the command and control policy change in a five-year period is almost as large as the impact of a whole set of conservation policies (including monitoring and law enforcement efforts) introduced in the second half of the 2000s (see Assunção et al. (2012)). Although the counterfactual estimations in this study are performed in a slightly different five-year window to the one used by the authors, the sheer magnitude of the forest area that was preserved indicates that the relative impact of DETER-based monitoring and law enforcement was far greater than that of other conservation policies implemented under the PPCDAm framework. This does not in any way imply that other policies should not be used to combat deforestation. Rather, it suggests that such policies are complementary to command and control efforts, effectively deterring forest clearings at the margin, while monitoring and law enforcement contain the bulk of deforestation.

In addition, our results indicate that there is substantial value in improving remote sensing-based monitoring. Overcoming DETER's incapacity to see through clouds and obtaining land cover imagery in higher resolutions are two examples of technological advances that could improve law enforcement targeting capability and add significant value to Brazil's conservation efforts. Amazon monitoring has recently been enhanced by the incorporation of Japanese radar technology, capable of detecting land cover patterns beneath cloud coverage. Our results reinforce the need of continuing and amplifying the use of such technologies.

### *5.3. Cost-benefit Analysis*

Our results have shown that command and control policy efforts are effective in curbing deforestation. Yet, are they a cost-effective way of protecting the Amazon? We make a first attempt at answering this question by performing a back-of-the-envelope calculation of the costs and benefits of monitoring and law enforcement in the Brazilian Amazon. In this simplified cost-benefit analysis, we compare the sum of Ibama's and INPE's annual budgets with the estimated monetary benefits of preserving forest areas and thereby avoiding carbon dioxide emissions. In this exercise, we use figures from our

second counterfactual simulation to account for the deterrent effect of monitoring and law enforcement as a whole, and not only that of the policy change.

According to our simulation, command and control efforts preserved an average of 24,500 square kilometers of forest area per year between 2007 and 2011. This is equivalent to approximately 900 million tCO<sub>2</sub> per year.<sup>10</sup> Assuming that Ibama’s annual budget from 2007 through 2011 was 560 million USD (value of its 2011 budget) and that INPE’s annual budget in the same period was 125 million USD (value of its 2010 budget), any price of carbon set above 0.76 USD/tCO<sub>2</sub> would more than compensate the cost of environmental monitoring and law enforcement in the Amazon. Compared to the price of 5.00 USD/tCO<sub>2</sub> commonly used in current applications, these figures suggest that the presence of an active monitoring and law enforcement authority in the Amazon has the potential to yield significant net monetary gains. Indeed, our estimates capture the lower bound of this potential gain. Considering that, in reality, only a share of Ibama’s and INPE’s budgets is used for Amazon monitoring and law enforcement, our cost-benefit comparison becomes even more striking.

#### 5.4. *Timing*

In addition to showing that command and control policy curbs deforestation, we are interested in investigating the timing of this effect. Table 5 reproduces the specifications of Table 3 including double and triple lags for the number of fines to test for persistence of the deterrent effect. Coefficients indicate that the impact of fines applied in  $t - 2$  is weaker than that of fines applied in  $t - 1$ . The number of fines applied in  $t - 3$  is not significant in any of the specifications. These results suggest that the effect of Ibama’s presence in a given municipality dissipates over time. They therefore reinforce the need to sustain continuous command and control efforts in the Amazon to effectively combat deforestation.

[Table 5 about here.]

#### 5.5. *Monitoring, Law Enforcement, and Agricultural Production*

There is an ongoing debate about whether conservation policies negatively affect economic output. Should the preservation of natural resources occur at the expense of production, there would be a tradeoff between conservation and economic growth. Faced with a choice between the two, it is not obvious what society would hold as a priority. Yet, should it be possible to sustain economic growth while preserving natural resources, this tradeoff would cease to exist (Cropper and Griffiths (1994), Panayotou (1995), Antle

---

<sup>10</sup>Estimations are based on a conversion factor of 10,000 tC/km<sup>2</sup> (36,700 tCO<sub>2</sub>/km<sup>2</sup>), as established in DPCD/MMA (2011)

and Heidebrink (1995), Grossman and Krueger (1995), Arrow et al. (1996), Foster and Rosenzweig (2003)). In this case, society could pursue these goals jointly. In particular, agricultural producers could operate at the intensive margin of production, increasing production by boosting productivity, instead of expanding production into new – often forested – areas. This productivity growth could more than compensate potential costs of conservation efforts.

Bearing this debate in mind, we investigate whether the change in monitoring and law enforcement policies had an adverse impact on local agricultural production. We use two different measures of municipality-level agricultural production: (i) agricultural GDP from Brazilian national accounts, and (ii) crop revenues from PAM/IBGE. Results presented in Table 6 indicate there is no tradeoff between conservation and agricultural production. The evidence therefore suggests that it would be possible to contain forest clearings without significantly compromising local agricultural production.

[Table 6 about here.]

Combined, our findings show that DETER-based monitoring and law enforcement played a crucial role in curbing Amazon deforestation, and thereby containing carbon dioxide emissions, at no apparent cost to local agricultural production. Subsistence agriculture may have been adversely affected by conservation efforts, but this effect cannot be perceived in municipality-level agricultural production. This suggests that it is possible to protect the native forest without significantly interfering with aggregate local agricultural production.

### 5.6. *Robustness Checks*

Although our results are generally consistent with the relevant Brazilian institutional context, we run a series of tests to check their robustness. We focus on three potential sources of concern. First, our coefficients could be capturing a spurious effect due to the correlation between PRODES cloud coverage and DETER cloud coverage. Second, our identification strategy relies on the fact that municipalities are comparable after controlling for observable characteristics and municipality and year fixed effects. However, forest cover in early sample years varies significantly across Amazon municipalities. This variation could affect deforestation trends, since the area in which forest clearings can still take place decreases with decreasing forest cover. This could potentially have driven our results. Third, deforestation increment levels in early sample years could also be determinants of municipality-level deforestation patterns. If higher municipality deforestation in the first years of the sample are indicative of areas with more intense economic growth, this baseline difference could result in different deforestation trends over time.

Specifications in Table 7 tackle these issues in three sets of robustness checks. First, in Column 1, we recalculate average DETER cloud coverage excluding the PRODES remote sensing period, as explained in Section 3.

Second, in column 2, we restrict our sample to municipalities that had over 50% of forest cover in 2003, the year immediately preceding the PPCDAm. In municipalities where comparatively less forest remains, the dynamics of deforestation may be very different from that in municipalities where forest cover is still high. We also test this in column 3, controlling for a trend determined by the initial percentage of deforested area in each municipality (an interaction between a linear trend and initial deforested area). Should our results have been driven by a natural convergence in deforestation rates between municipalities with greater and smaller deforested areas, this test would yield insignificant coefficients.

Finally, in column 4, we run a similar test to that of column 3, but instead of using the initial value of deforested territory, we use the initial value of deforestation increments. The economic dynamics of municipalities with higher deforestation increments could be very different from the dynamics of those with smaller deforestation increments. Note that, in this case, we are analyzing initial annual deforested increments; in the previous case, we were assessing initial cumulated share of deforested area in each municipality. Differences in economic dynamics could imply very different trends in deforestation increments and potentially have driven our results. We therefore also control for a trend that depends on initial deforestation increments (an interaction between a linear trend and initial deforestation increment).

The coefficients for the number of fines in Table 7 remains negative and significant in all specifications. Overall, the robustness of our results supports the specifications chosen for our main regressions, as well as the interpretation of our findings.

[Table 7 about here.]

## 6. Final Comments

Climate change and biodiversity concerns have pushed tropical deforestation into occupying a position at the top of the global policy debate priority list. Understanding deforestation in the Brazilian Amazon and how to most efficiently prevent it is therefore currently a matter of first-order importance not only for Brazil, but for the global community.

This paper investigates the effects of a key command and control policy change on Amazon deforestation. We show that the strategic use of advanced satellite technology and the intensification of monitoring, alongside improvements in law enforcement activity, significantly contributed to the 2000s Amazon deforestation slowdown. We find that

command and control has been particularly effective in curbing deforestation compared to other recent Amazon conservation efforts. Increased presence of police force in the Amazon accounts for the preservation of 59,500 square kilometers of forest area from 2007 through 2011.

Our results also shed light on the potentially adverse effects of conservation policies, particularly on the supposed tradeoff between economic growth and preservation of natural resources. We show that command and control policies adopted in the second half of the 2000s had no significant impact on municipality-level agricultural production. Overall, command and control appears to play a crucial role in the curbing of Amazon deforestation at no apparent cost to agricultural production.

Finally, a simple cost-benefit analysis suggests that the gains derived from reduced deforestation more than compensate monitoring and law enforcement costs. This reinforces the case for promoting preservation of the native forest via command and control efforts, and for continuing to make improvements in monitoring and law enforcement technology where possible.

## **Acknowledgments**

Juliana Portella and Karla Gregório provided excellent research assistance. We thank the Brazilian Ministry of the Environment, and particularly Francisco Oliveira, for their continuous support. We are also grateful to Andrew Hobbs, Angela Falconer, Arthur Bragança, David Nelson, Dimitri Szerman, Elysha Rom-Povolo, Jane Wilkinson, Joana Chiavari, and Pedro Hemsley for helpful comments.

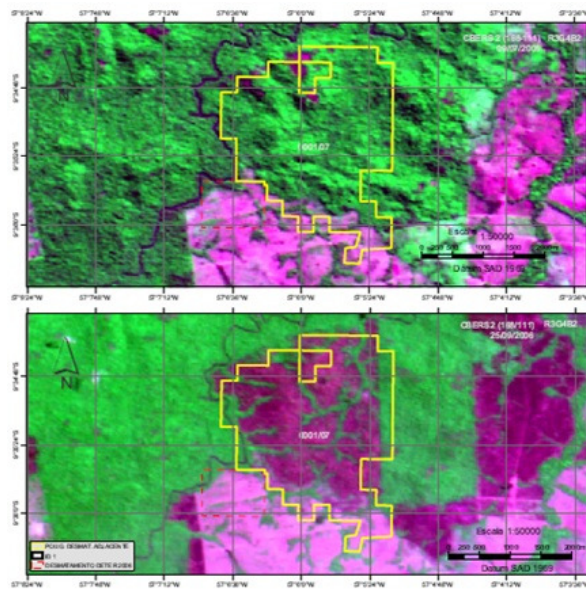


## References

- Anderson, E. and Talley, W. (1995). The oil spill size of tanker and barge accidents: determinants and policy implications. *Land Economics*, 71:216–228.
- Angelsen, A. and Kaimowitz, D. (1999). Rethinking the Causes of Deforestation: Lessons from Economic Models. *The World Bank Research Observer*, 14(1):73–98.
- Antle, J. M. and Heidebrink, G. (1995). Environment and development: Theory and international evidence. *Economic Development and Cultural Change*, 43:604–625.
- Aragão, L. E., Malhi, Y., Barbier, N., Lima, A., Shimabukuro, Y., Anderson, L., and Saatchi, S. (2008). Interactions Between Rainfall, Deforestation and Fires During Recent Years in the Brazilian Amazon. *Philosophical Transactions of the Royal Society B*, 363:1779–1785.
- Arrow, K., Bolin, B., Costanza, R., Dasgupta, P., Folke, C., Holling, C. S., Jansson, B., Levin, S., Maler, K., Perrings, C., and Pimentel, D. (1996). Economic growth, carrying capacity, and the environment. *Ecological Applications*, 6:13–15.
- Assunção, J., Gandour, C., and Rocha, R. (2012). Deforestation Slowdown in the Legal Amazon: Prices or Policies? CPI Rio Working Paper 1.
- Barbier, E. and Burgess, J. (1996). Economic Analysis of Deforestation in Mexico. *Environment and Development Economics*, 1:203–239.
- Barreto, P., Pereira, R., and Arima, E. (2008). *A Pecuária e o Desmatamento na Amazônia na Era das Mudanças Climáticas*. Belém: Imazon.
- Bertrand, M., Duflo, E., and Mullainathan, S. (2004). How much should we trust differences-in-differences estimates? *Quarterly Journal of Economics*, 119:249–275.
- Brito, B. (2009). Multas Pós-Operação Curupira no Mato Grosso. Technical report, Imazon.
- Brito, B. and Barreto, P. (2008). *Enforcement Against Illegal Logging In The Brazilian Amazon*. Imazon.
- Cameron, S. (1988). The economics of crime deterrence: A survey of theory and evidence. *Kyklos*, 41:301–323.
- Chomitz, K. and Thomas, T. (2003). Determinants of Land Use in Amazônia: A Fine-Scale Spatial Analysis. *American Journal of Agricultural Economics*, 85(4):1016–1028.
- Cropper, M. and Griffiths, C. (1994). The interaction of population growth and the environmental quality. *American Economic Review*, 84:250–254.
- Di Tella, R. and Schargrodsky, E. (2004). Do police reduce crime? estimates using the allocation of police forces after a terrorist attack. *American Economic Review*, 94:115–133.
- Draca, M., Machin, S., and Witt, R. (2011). Panic on the streets of london: Police, crime, and the july 2005 terror attacks. *American Economic Review*, 101:2157–2181.
- Earnhart, D. and Segerson, K. (2012). The influence of financial status on the effectiveness of environmental enforcement. *Journal of Public Economics*, 96:670–684.
- Eckert, H. (2004). Inspections, warnings, and compliance: the case of petroleum storage regulation. *Journal of Environmental Economics and Management*, 47:232–259.
- Epplé, D. and Visscher, M. (1984). Environmental pollution: Modeling occurrence, detection and deterrence. *Journal of Law and Economics*, 27:29–60.
- Foster, A. and Rosenzweig, M. (2003). Economic Growth and The Rise Of Forests. *Quarterly Journal of Economics*, 118(2):601–637.
- Gray, W. B. and Shadbegian, R. (2005). When and why do plants comply? paper mills in the 1980s. *Law and Policy*, 27:238–261.
- Gray, W. B. and Shimshack, J. P. (2011). The effectiveness of environmental monitoring and enforcement: A review of the empirical evidence. *Review of Environmental Economics and Policy*, 5:3–24.

- Grossman, G. M. and Krueger, A. B. (1995). Economic growth and the environment. *Quarterly Journal of Economics*, 110:353–377.
- Hargrave, J. and Kis-Katos, K. (2010). Economic Causes of Deforestation in the Brazilian Amazon: A Panel Data Analysis for 2000s. In *Proceedings of the German Development Economics Conference*, Hannover. Verein für Socialpolitik, Research Committee Development Economics.
- Hirakuri, S. (2003). *Can Law Save the Forest? Lessons from Finland and Brazil*. CIFOR, Bogor, Indonesia.
- INPE (2012). Projeto prodes - monitoramento da floresta amazônica brasileira por satélite. Technical report, INPE. <http://www.obt.inpe.br/prodes/index.php>.
- Levitt, S. D. (1997). Using electoral cycles in police hiring to estimate the effect of police on crime. *American Economic Review*, 87:270–290.
- Magat, W. and Viscusi, W. K. (1990). Effectiveness of the epa’s regulatory enforcement: The case of industrial effluent standards. *Journal of Law and Economics*, 33:331–360.
- Matsuura, K. and Willmott, C. (2012). Terrestrial precipitation: 1900-2010 gridded monthly time series (1900 - 2010) (v 3.01 added 6/14/12). University of Delaware. <http://climate.geog.udel.edu/climate/>.
- Ministério do Meio Ambiente, Departamento de Políticas para o Combate ao Desmatamento - MMA/DPCD (2011). Nota Técnica No. 22.
- Ministério do Meio Ambiente, MMA (2012). Brazilian Policy to Tackle Deforestation in the Amazon. In *Rio+20 United Nations Conference on Sustainable Development*.
- Negri, A., Adler, R., Xu, L., and Surratt, J. (2004). The Impact of Amazonian Deforestation on Dry Season Rainfall. *Journal of Climate*, 17:1306–1319.
- Panayotou, T. (1995). Environmental degradation at different stages of economic development. In Ahmed, I. and Doeleman, J. A., editors, *Beyond Rio: The The Environmenatl Crisis and Sustainable livelihoods in the Third World*, pages 13–36. London: Macmillan Press.
- Panayotou, T. and Sungsuwan, S. (1994). *An Econometric Analysis of the Causes of Tropical Deforestation: The Case of Northeast Thailand*, chapter In: The Causes of Tropical Deforestation: The Economic and Statistical Analysis of Factors Giving Rise to the Loss of the Tropical Forests, pages 192–210. University College of London Press.
- Pfaff, A. S. (1999). What Drives Deforestation in the Brazilian Amazon? Evidence from Satellite and Socioeconomic Datal. *Journal of Environmental Economics and Management*, 37(1):26–43.
- Reis, E. and Guzmán, R. (1994). An Econometric Model of Amazon Deforestation. In K. Brown and D. Pearce, eds. *The Causes of Tropical Deforestation*. London: UCL Press, pages 172–191.
- Reis, E. and Margulis, S. (1991). Options for Slowing Amazon Jungle Clearing. In R. Dornbusch and J.M. Poterba, eds. *Global Warming: Economic Policy Responses*. Cambridge, MA: MIT Press, pages 335–375.
- Saad, S., Rocha, H., Dias, M. A. F. S., and Rosolem, R. (2010). Can the Deforestation Breeze Change the Rainfall in Amazonia? A Case Study for the BR-163 Highway Region. *Earth Interactions*, 14.
- Shimshack, J. and Ward, M. B. (2005). Regulator reputation, enforcement, and environmental compliance. *Journal of Environmental Economics and Management*, 50:519–540.
- Shimshack, J. and Ward, M. B. (2008). Enforcement and over-compliance. *Journal of Environmental Economics and Management*, 55 (1):90–105.

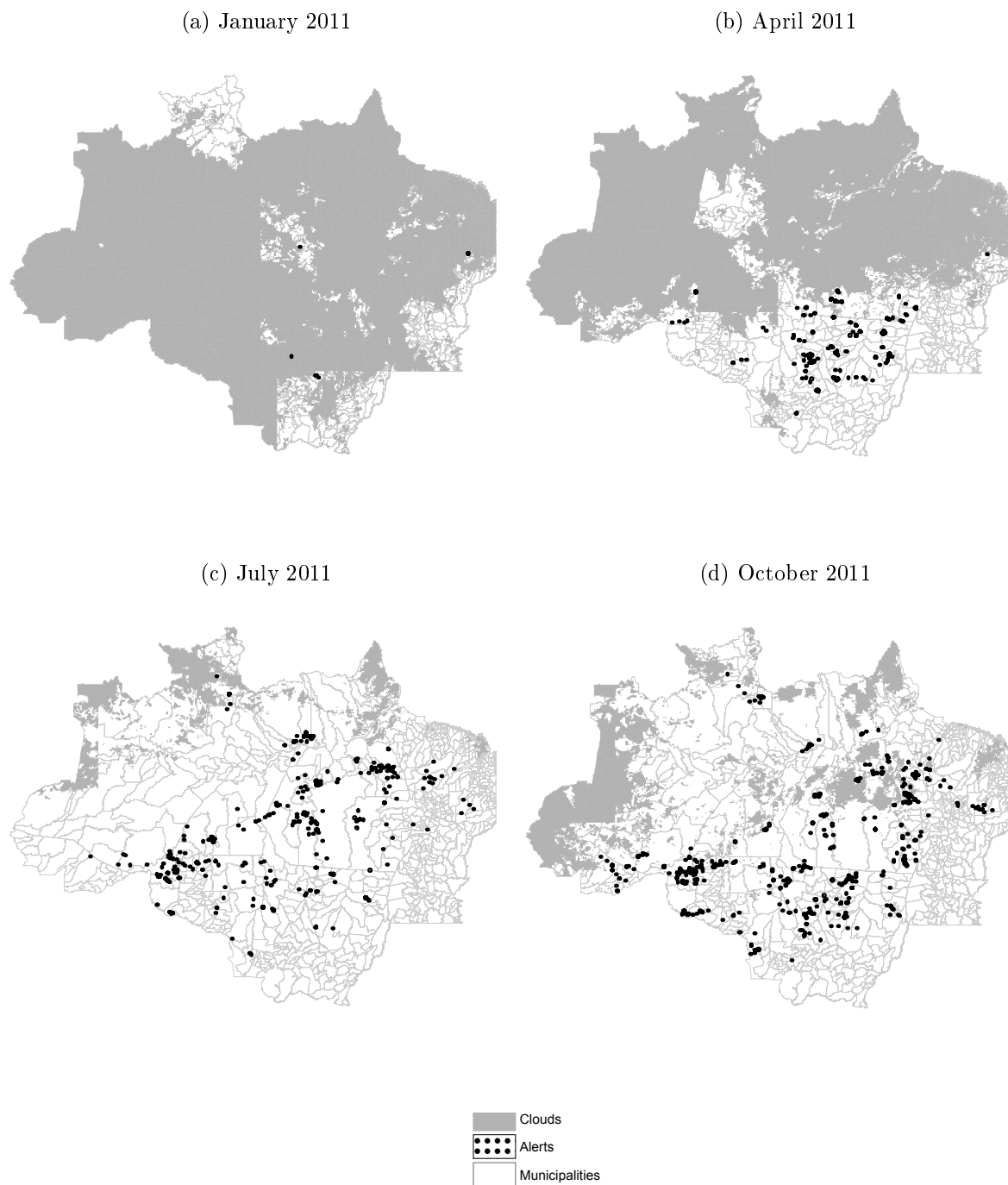
Figure 1  
 DETER: How is Deforestation Detected in Satellite Imagery?



Notes: Top and bottom panels show satellite images of the same location recorded at two different moments in time – the top panel is an earlier image and the bottom panel a later one. Green indicates forest areas and purple indicates deforested areas.

Source: Ibama.

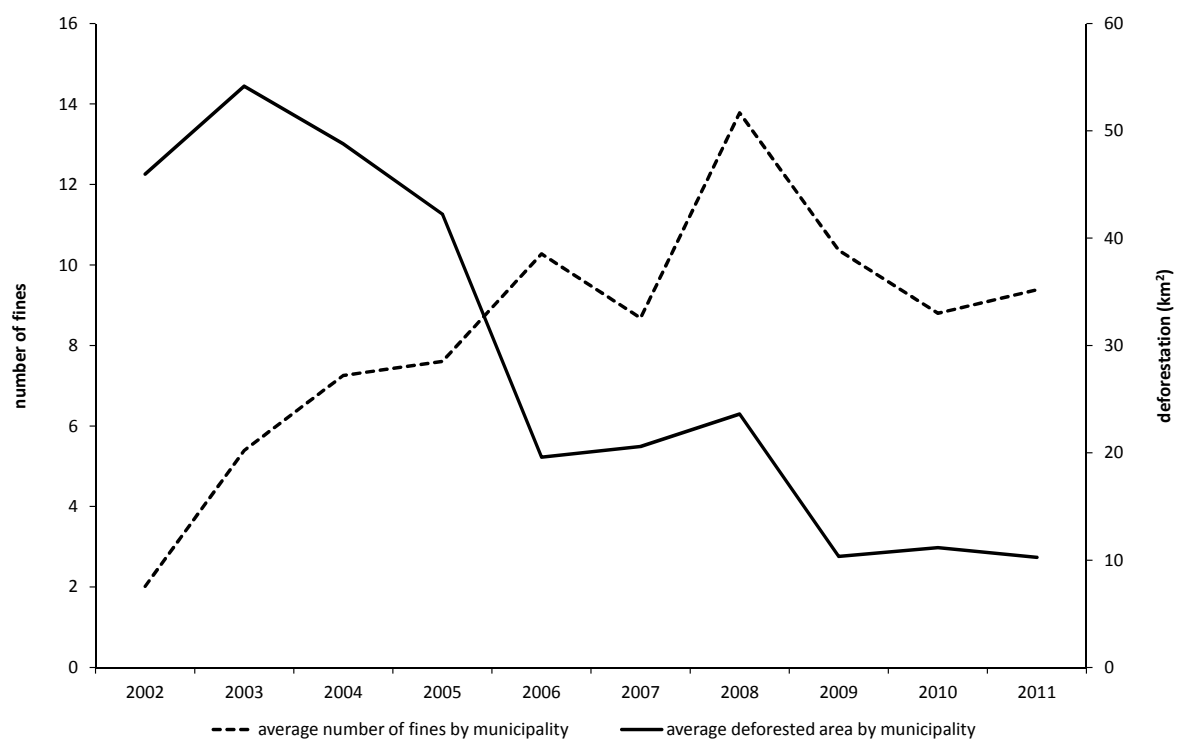
Figure 2  
DETER Cloud Coverage and Deforestation Alerts



Notes: The figure illustrates the high degree of within-year variation in DETER cloud coverage and shows that, typically, no alerts are issued in areas covered by clouds.

Source: DETER/INPE.

Figure 3  
Number of Environmental Fines and Deforestation in Sample Municipalities



Source: PRODES/INPE, Ibama.

Table 1  
Descriptive Statistics

	2006	2007	2008	2009	2010	2011
Deforestation	19.59 (53.43)	20.59 (58.12)	23.62 (56.83)	10.35 (33.94)	11.17 (27.77)	10.26 (27.43)
Number of Fines	10.27 (23.39)	8.682 (19.16)	13.78 (33.04)	10.37 (30.32)	8.799 (21.38)	9.384 (24.29)
DETER Cloud	0.381 (0.0715)	0.708 (0.172)	0.604 (0.203)	0.677 (0.216)	0.611 (0.222)	0.538 (0.199)
Rain	2230.9 (612.6)	2154.1 (613.9)	2225.9 (568.5)	2197.1 (511.9)	1911.2 (404.8)	
PRODES Cloud	358.4 (1414.7)	541.5 (2348.9)	420.7 (1763.1)	413.7 (1362.9)	788.4 (3237.0)	531.5 (2812.6)
PRODES Non-observable	46.44 (256.5)	47.18 (256.9)	22.66 (227.0)	15.78 (99.90)	14.24 (99.26)	14.20 (99.20)
Protected Areas	0.265 (0.324)	0.272 (0.329)	0.275 (0.330)	0.277 (0.331)	0.277 (0.331)	0.278 (0.331)
Crop Prices 1 <sup>st</sup> Semester	-0.572 (0.292)	-0.546 (0.339)	-0.520 (0.435)	-0.540 (0.403)	-0.549 (0.310)	-0.522 (0.387)
Crop Prices in t-1	-0.551 (0.336)	-0.568 (0.299)	-0.537 (0.367)	-0.533 (0.402)	-0.543 (0.388)	-0.545 (0.324)
Cattle Prices 1 <sup>st</sup> Semester	21.16 (24.88)	23.54 (27.67)	29.24 (34.37)	28.34 (33.31)	27.73 (32.60)	31.82 (37.41)
Cattle Prices in t-1	24.67 (29.00)	23.54 (27.67)	26.01 (30.57)	31.47 (36.99)	29.69 (34.91)	30.79 (36.20)
Agricultural GDP	17,537.5 (19,449.5)	19,794.5 (27,497.5)	22,939.2 (34,985.5)	21,877.4 (30,407.7)		
Crop Production	9,657.5 (27,144.0)	11,489.4 (37,506.7)	15,149.9 (54,165.1)	13,607.4 (47,490.6)	11,920.9 (34,506.6)	16,200.2 (55,571.1)

Notes: The table reports annual means and standard deviations (in parentheses) for the variables used in the empirical analysis.

Source: DETER/INPE, Ibama, PRODES/INPE, SEAB-PR, Matsuura and Willmott (2012), and PAM/IBGE.

Table 2  
First Stage Regressions: The Effect of DETER Cloud Coverage on the Number of Fines

VARIABLES	OLS Number of Fines	OLS Number of Fines	OLS Number of Fines	OLS Number of Fines
<b>DETER Cloud</b>	<b>-12.75***</b> (2.654)	<b>-13.67***</b> (2.600)	<b>-8.433**</b> (3.562)	<b>-9.060**</b> (3.695)
Rain		0.000565 (0.00103)	-0.00480*** (0.00129)	-0.00482*** (0.00144)
PRODES Cloud		0.000265 (0.000230)	0.000208 (0.000150)	0.000191 (0.000144)
PRODES Non-observable		-0.000612 (0.00186)	0.00141** (0.000568)	0.00125** (0.000590)
Priority Municipalities				8.467** (3.595)
Protected Areas				15.57** (6.881)
Crop Prices 1 <sup>st</sup> Semester				2.593 (5.295)
Cattle Prices 1 <sup>st</sup> Semester				-0.147* (0.0865)
Crop Prices in t-1				-0.546 (5.919)
Cattle Prices in t-1				0.0404 (0.0888)
Observations	3,282	2,735	2,735	2,735
R-squared	0.011	0.012	0.024	0.033
Municipality and Year FE	No	No	Yes	Yes
Number of municipalities			547	547

Notes: Coefficients are estimated using a municipality-by-year panel data set covering the 2007 through 2011 period. The sample includes all Amazon Biome municipalities. Column 1 presents OLS coefficients for a specification with no controls; column 2 adds controls for rainfall, PRODES cloud coverage, and non-observable areas during period of PRODES remote sensing; column 3 adds municipality and time fixed effects; column 4 adds controls for priority municipality status, percentage of municipality area occupied by protected areas, current and lagged cattle prices, and current and lagged crop prices. Robust standard errors are clustered at the municipality level. Significance: \*\*\* p<0.01, \*\* p<0.05, \* p<0.10.

Table 3  
Second Stage Regressions: The Effect of Monitoring and Law Enforcement on Deforestation

VARIABLES	OLS Normalized Deforestation	OLS Normalized Deforestation	2SLS Normalized Deforestation	2SLS Normalized Deforestation	2SLS Log(Deforestation)	2SLS Log(Deforestation)
<b>Number of Fines in t-1</b>	<b>-0.000421</b> <b>(0.000746)</b>	<b>-0.000104</b> <b>(0.000752)</b>	<b>-0.0568**</b> <b>(0.0257)</b>	<b>-0.0616*</b> <b>(0.0346)</b>	<b>-0.0974**</b> <b>(0.0444)</b>	<b>-0.111*</b> <b>(0.0615)</b>
Rain in t-1	3.78e-05 (4.91e-05)	4.47e-05 (4.86e-05)	-0.000203 (0.000123)	-0.000218 (0.000155)	-0.000250 (0.000222)	-0.000323 (0.000294)
PRODES Cloud	-1.41e-06 (1.55e-05)	-1.33e-06 (1.55e-05)	1.52e-05 (2.33e-05)	1.68e-05 (2.51e-05)	2.80e-05 (3.46e-05)	3.21e-05 (3.96e-05)
PRODES Non-observable	8.09e-05 (9.33e-05)	9.16e-05 (9.09e-05)	0.000245** (0.000122)	0.000249* (0.000133)	0.000447* (0.000251)	0.000459* (0.000278)
Priority Municipalities		-0.502*** (0.0743)		0.142 (0.412)		0.526 (0.712)
Protected Areas		0.803 (0.618)		2.831** (1.442)		5.252** (2.625)
Crop Prices 1 <sup>st</sup> Semester	-0.0679 (0.0779)	-0.0675 (0.0793)	-0.0710 (0.176)	-0.0699 (0.189)	0.371 (0.556)	0.378 (0.595)
Cattle Prices 1 <sup>st</sup> Semester	-0.00442 (0.00392)	-0.00493 (0.00391)	0.00802 (0.00815)	0.00942 (0.0100)	0.0168 (0.0150)	0.0209 (0.0188)
Crop Prices in t-1	0.0474 (0.106)	0.0156 (0.107)	0.221 (0.265)	0.285 (0.315)	0.0248 (0.472)	0.162 (0.545)
Cattle Prices in t-1	-0.00188 (0.00365)	-0.00214 (0.00363)	-0.0138 (0.00862)	-0.0135 (0.00961)	-0.0512*** (0.0170)	-0.0514*** (0.0196)
Observations	2,630	2,630	2,630	2,630	2,392	2,392
Number of municipalities	526	526	526	526	505	505
Municipality and Year FE	Yes	Yes	Yes	Yes	Yes	Yes

Notes: Coefficients are estimated using a municipality-by-year panel data set covering the 2007 through 2011 period. The sample includes all Amazon Biome municipalities with available data and variation in forest cover during the sample period. The dependent variable used in columns 1 through 4 is the normalized annual deforestation increment; in columns 5 and 6 it is replaced by the log of the annual deforestation increment. Column 1 includes controls for lagged rainfall, PRODES cloud coverage, non-observable areas during period of PRODES remote sensing, current and lagged cattle prices, and current and lagged crop prices; column 2 adds controls for priority municipality status and percentage of municipality area occupied by protected areas. Columns 1 and 2 present OLS coefficients; columns 3 through 6 repeat specifications of previous columns and present 2SLS coefficients using DETER cloud coverage as an instrument for the number of fines. Robust standard errors are clustered at the municipality level. Significance: \*\*\* p<0.01, \*\* p<0.05, \* p<0.10.



Table 4  
Counterfactual Simulations

Year	Observed Deforestation (square kilometers)	Estimated Deforestation (Fines = Fines from 2003)	Estimated - Observed (Fines = Fines from 2003)	Estimated Deforestation (Fines=0)	Difference Estimated - Observed (Fines=0)
2007	11,263	20,289	9,026	32,933	21,669
2008	12,918	23,432	10,514	36,075	23,157
2009	5,663	20,960	15,297	33,603	27,940
2010	6,109	20,498	14,389	33,141	27,033
2011	5,610	15,895	10,285	28,538	22,928
Total 2007 - 2011	41,563	101,073	59,511	164,290	122,727

Notes: Counterfactual simulations are conducted using the sample, specifications, and estimated coefficients from Table 3. "Observed Deforestation" presents total recorded deforestation in the sample; "Estimated Deforestation" presents total estimated deforestation in alternative counterfactual scenarios; "Difference" reports the difference between estimated and observed deforestation for each counterfactual scenario.

Table 5  
Second Stage Regressions: Does the Effect of Monitoring and Law Enforcement on Deforestation Last?

VARIABLES	(1)	(2)	(3)	(4)
	Normalized Deforestation	Normalized Deforestation	Normalized Deforestation	Normalized Deforestation
<b>Number of Fines in t-2</b>	<b>-0.0361*</b> (0.0201)	<b>-0.0341*</b> (0.0196)		
<b>Number of Fines in t-3</b>			<b>-2.79e-05</b> (0.00960)	<b>-3.03e-05</b> (0.00961)
Rain in t-2	-8.48e-05 (0.0001114)	-6.49e-05 (0.000112)		
Rain in t-3			0.000339** (0.000139)	0.000339** (0.000139)
Cloud Prodes	-8.11e-06 (1.90e-05)	-7.64e-06 (1.89e-05)	9.91e-06 (1.30e-05)	9.91e-06 (1.30e-05)
Non-Observed Prodes	3.54e-06 (0.000233)	7.96e-06 (0.000234)	-0.00942 (0.00748)	-0.00942 (0.00748)
Priority Municipalities		-1.415*** (0.458)		
Protected Areas		2.989** (1.218)		-0.0101 (0.370)
Crop Prices 1st Semester	-0.344 (0.287)	-0.323 (0.274)	0.243** (0.122)	0.243** (0.122)
Cattle Prices 1st Semester	0.00787 (0.00648)	0.00797 (0.00627)	0.00529 (0.00523)	0.00529 (0.00524)
Crop Prices in t-1	0.113 (0.274)	0.108 (0.263)	-0.108 (0.150)	-0.108 (0.150)
Cattle Prices in t-1	0.00676 (0.00550)	0.00669 (0.00536)	0.0918*** (0.0125)	0.0918*** (0.0125)
Observations	2,104	2,104	1,578	1,578
Number of municipalities	526	526	526	526
Municipality and Year FE	Yes	Yes	Yes	Yes

Notes: Coefficients shown are estimated using a municipality-by-year panel data set covering the 2007 through 2011 period. The sample includes all Amazon Biome municipalities with available data and variation in forest cover during the sample period. All specifications are estimated using 2SLS and the normalized annual deforestation increment as dependent variable. Column 1 presents coefficients for specifications using the two period-lagged total number of fines, which is instrumented by two period-lagged DETER cloud coverage; column (2) adds controls for priority municipality status and percentage of municipality area occupied by protected areas. Columns 3 and 4 repeat the specifications of previous columns using the three period-lagged total number of fines, which is instrumented by three period-lagged DETER cloud coverage. All specifications include controls for lagged rainfall (double and triple lagged, accordingly), PRODES cloud coverage, non-observable areas during period of PRODES remote sensing, current and lagged cattle prices, and current and lagged crop prices. Robust standard errors are clustered at the municipality level. Significance: \*\*\* p<0.01, \*\* p<0.05, \* p<0.10.

Table 6  
Second Stage Regressions: The Effect of Monitoring and Law  
Enforcement on Agricultural Production

VARIABLES	(1) Agriculture GDP	(2) Crop Production
<b>Number of Fines in t-1</b>	<b>-0.00443</b> <b>(0.00841)</b>	<b>-0.00250</b> <b>(0.0138)</b>
Rain in t-1	-0.000192*** (7.45e-05)	-2.42e-07 (7.39e-05)
PRODES Cloud	1.21e-05* (7.05e-06)	-1.55e-06 (1.48e-05)
PRODES Non-observable	0.000134** (5.54e-05)	9.79e-05 (6.15e-05)
Priority Municipalities	0.197 (0.144)	0.0724 (0.163)
Protected Areas	0.998 (0.888)	1.723 (1.150)
Crop Prices 1 <sup>st</sup> Semester	0.782*** (0.201)	0.522*** (0.138)
Cattle Prices 1 <sup>st</sup> Semester	0.00123 (0.00238)	-0.00548 (0.00430)
Crop Prices in t-1	-0.263* (0.151)	0.0790 (0.127)
Cattle Prices in t-1	-0.00174 (0.00185)	-0.00424 (0.00349)
Observations	1,641	2,549
Number of municipalities	547	519
Municipality and Year FE	Yes	Yes

Notes: Coefficients shown are estimated using a municipality-by-year panel data set covering the 2007 through 2011 period. The sample includes all Amazon Biome municipalities with available data and variation in forest cover during the sample period. All specifications are estimated using 2SLS regressions. The dependent variable in column 1 is agricultural GDP; in column (2) it is replaced by crop revenues. All specifications include controls for lagged rainfall, PRODES cloud coverage, non-observable areas during period of PRODES remote sensing, current and lagged cattle prices, current and lagged crop prices, priority municipality status and percentage of municipality area occupied by protected areas. The lagged number of fines is instrumented by lagged DETER cloud coverage in all specifications. Robust standard errors are clustered at the municipality level. Significance: \*\*\* p<0.01, \*\* p<0.05, \* p<0.10.

Table 7  
Robustness Checks: Second Stage Regressions for the Effect of Monitoring and Law Enforcement on Deforestation

VARIABLES	(1)	(2)	(3)	(4)
	Normalized Deforestation	Normalized Deforestation	Normalized Deforestation	Normalized Deforestation
<b>Number of Fines in t-1</b>	<b>-0.0352*</b> <b>(0.0202)</b>	<b>-0.0901*</b> <b>(0.0462)</b>	<b>-0.0871*</b> <b>(0.0456)</b>	<b>-0.0605*</b> <b>(0.0342)</b>
Rain in t-1	-0.000105 (0.000102)	-0.000395 (0.000265)	-0.000366* (0.000205)	-0.000208 (0.000151)
PRODES Cloud	8.97e-06 (1.89e-05)	2.29e-05 (3.34e-05)	2.07e-05 (3.11e-05)	1.62e-05 (2.42e-05)
PRODES Non-observable	0.000181* (9.96e-05)	0.000365** (0.000185)	0.000310* (0.000176)	0.000246* (0.000131)
Priority Municipalities	-0.135 (0.250)	0.579 (0.652)	0.380 (0.535)	0.173 (0.424)
Protected Areas	1.959** (0.926)	3.641* (2.047)	3.517* (1.872)	2.816** (1.424)
Crop Prices 1 <sup>st</sup> Semester	-0.0089 (0.123)	-0.249 (0.274)	0.0160 (0.266)	-0.0765 (0.185)
Cattle Prices 1 <sup>st</sup> Semester	0.00325 (0.00675)	-0.0296 (0.0420)	0.0227 (0.0140)	0.00897 (0.00978)
Crop Prices in t-1	0.169 (0.194)	0.0567 (0.318)	0.450 (0.462)	0.288 (0.309)
Cattle Prices in t-1	-0.00862 (0.00640)	0.0160 (0.0567)	-0.00949 (0.0123)	-0.0134 (0.00948)
Observations	2,630	1,655	2,630	2,630
Number of municipalities	526	331	526	526
Municipality and Year FE	Yes	Yes	Yes	Yes
Time trend * initial deforestation rate				
Time trend * initial forest share			Yes	Yes

Notes: Coefficients are estimated using a municipality-by-year panel data set covering the 2007 through 2011 period. The sample includes all Amazon Biome municipalities with available data and variation in forest cover during the sample period. All specifications are estimated using 2SLS regressions and normalized annual deforestation increment as dependent variable. Column 1 substitutes average DETER cloud coverage by average DETER cloud coverage using strictly the period for which there is no PRODES remote sensing. Column 2 presents results for a restricted sample of municipalities that had over 50% of forest cover at the beginning of our period of interest. Column 3 controls for a trend determined by the initial share of deforested area in each municipality (an interaction between a linear trend and initial deforested area). Column 4 controls for a trend determined by the initial value of deforestation increments (an interaction between a linear trend and initial deforestation increment). All specifications include controls for lagged rainfall, PRODES cloud coverage, non-observable areas during period of PRODES remote sensing, current and lagged cattle prices, current and lagged crop prices, priority municipality status and percentage of municipality area occupied by protected areas. The lagged number of fines is instrumented by lagged DETER cloud coverage in all specifications. Robust standard errors are clustered at the municipality level. Significance: \*\*\* p<0.01, \*\* p<0.05, \* p<0.10.