

# Clinical and regulatory protocol for treatment of jaundice in adults and elderly: A support for health care network and regulatory system<sup>1</sup>

Protocolo clínico e de regulação para o tratamento de icterícia no adulto e idoso:  
Subsídio para as redes assistenciais e o complexo regulador.

**José Sebastião dos Santos<sup>2</sup>, Rafael Kemp<sup>3</sup>, Ajith Kumar Sankarankutty<sup>4</sup>, Wilson Salgado Júnior<sup>5</sup>, Fernanda Fernandes Souza<sup>6</sup>, Andreza Correa Teixeira<sup>7</sup>, Guilherme Viana Rosa<sup>8</sup>, Orlando Castro e Silva<sup>9</sup>**

1. Work performed in the Division of Gastroenterology of the Department of Surgery and Anatomy – School of Medicine of Ribeirão Preto – University of São Paulo (FMRP-USP), Brazil.
2. PhD, Professor of Surgery of Division of Gastroenterology of the Department of Surgery and Anatomy (FMRP-USP), Brazil.
3. MD, Division of Gastroenterology of the Department of Surgery and Anatomy (FMRP-USP), Brazil
4. PhD, Professor of Surgery of Division of Gastroenterology of the Department of Surgery and Anatomy (FMRP-USP), Brazil.
5. MD, Division of Gastroenterology of the Department of Surgery and Anatomy (FMRP-USP), Brazil
6. MD, Division of Gastroenterology of the Department of Surgery and Anatomy (FMRP-USP), Brazil
7. MD, Division of Gastroenterology of the Department of Surgery and Anatomy (FMRP-USP), Brazil
8. MD. Resident, the Department of Surgery and Anatomy (FMRP-USP), Brazil.
9. PhD, Professor and Head of Division of Gastroenterology of the Department of Surgery and Anatomy, (FMRP-USP), Brazil

---

## ABSTRACT

**Purpose:** Clinical interventions and controlled access to health care system can be improved by a Regulatory System (RS) and Clinical and Regulatory Protocols (CRPs). The objective of this work is to present the methodology used for elaborating the CRPs. **Methods:** The process used to elaborate the CPRs involved a scientific co-operation between university and health care system. Workshops were held and attended by primary care practitioners, RS team, and matrix team (university specialists supporting primary care practitioners). **Results:** The treatment of jaundice in adults and elderly is amongst the themes selected for elaborating the CRPs since jaundice is a medical sign frequently seen in four clinical scenarios involving distinctive diagnostic and therapeutic interventions which can be performed in different health care settings. Evaluation guidelines as well as the clinical and regulatory procedures were established for different health care settings. The most relevant clinical and regulatory interventions were expressed as algorithms in order to facilitate the use of CRPs by health care practitioners. **Conclusion:** It is expected that such protocol implementation can minimise the imbalance between the icteric patients' needs and the treatment modalities being offered, thus contributing to a more co-operative health care network.

**Key words:** clinical and regulatory protocols, guidelines, regulatory systems, medical regulation, jaundice, Unified Health System (Sistema Único de Saúde) .

---

---

## RESUMO

**Objetivo:** As ações clínicas e de ordenação do acesso à rede de saúde podem ser aperfeiçoadas pelo Complexo Regulador (CR) e pelos Protocolos Clínicos e de Regulação (PCR). Nesse trabalho apresenta-se a metodologia de elaboração dos PCR mediante cooperação entre universidade e sistema de saúde. **Métodos:** O processo utilizado para a elaboração dos PCR envolve oficinas com a participação de profissionais da atenção básica, do CR e das equipes matriciais (especialistas da universidade que dão suporte às equipes de atenção básica). **Resultados:** Dentre os temas selecionados para elaboração dos PCR, incluiu-se a icterícia no adulto e no idoso. Trata-se de um sinal clínico que comporta quatro cenários de apresentação com distintos percursos diagnósticos e terapêuticos passíveis de serem executados em diferentes pontos da rede assistencial. As diretrizes de avaliação, bem como as decisões e ações clínicas e reguladoras cabíveis para os diferentes cenários foram estabelecidas desde a atenção básica até o hospital terciário. As ações clínicas e reguladoras mais relevantes foram colocadas em algoritmo para facilitar o emprego do protocolo pelos profissionais de saúde. **Conclusão:** Há a expectativa que a implementação desse protocolo possa minimizar o descompasso entre as necessidades dos pacientes icterícios e a modalidade de serviço oferecida, e assim contribuir para a configuração de uma rede assistencial mais cooperativa.

**Descritores:** Protocolos clínicos e de regulação, Protocolos, Complexo regulador, Regulação médica, icterícia, Sistema Único de Saúde (Unified Health System).

---

### Introduction

The Brazil's Unified Health System (SUS) was established in 1988, and among other principles and guidelines, has the objective of decentralising the health care interventions and configuring an increasingly, hierarchically complex health care network based on the primary health care<sup>1</sup>. The analysis of the concepts, operational norms, guidelines, and agreements reinforces the primary care roles, which includes an attribution of performing clinical interventions regarding the most prevalent health problems and co-ordination to assure access to health services.<sup>2,3,4</sup>

Although the SUS implementation has amplified the primary health care structure, both organisation and performance regarding clinical interventions as well as co-ordination of the access to other health services are still inefficient. According to the Ribeirão Preto Municipal Health Secretary (MHS), in 2004 there were 293 primary care physicians who could provide 928,224 consultations and meet 91% of the medical needs of the population. However, such practitioners yielded 586,528 consultations and met 57.43% of those medical needs.<sup>5</sup> The expected consultation ratios for different health care services were the following: 63% for primary care, 22% for specialised care, and 15% for emergency care.<sup>6</sup> Based on the total number of consultations, the primary care ratio had 35.6% compared to 34.15% and 30.29% for specialised and emergency care services, respectively.<sup>5</sup>

Inefficient clinical interventions and poor primary care co-ordination have resulted in excessive demand for specialised and emergency care services. Amongst the measures adopted by the Municipal Health Secretary in 2005, one can cite the implementation of the Regulatory System (RS) for health care demand.<sup>5</sup> The RS is aimed at mapping the resources regarding the health care services offered by the Ribeirão Preto city and at structuring the

various regulatory units concerning inpatient and outpatient beds, moderately and highly complex medical exams, medical consultations, pharmaceutical care, sanitary and epidemiological surveillance, emergency care and patient removal, audit and assessment, all in an integrated way.

Those health problems not deserving primary care coverage and not characterised as being emergency are referred to the RS team by means of referral orders, which are analysed so that the optimal action can be taken according to the resources available in the health care network. Such a process also shows the deficiencies in the health care network, thus helping administrators make appropriate investment decisions in terms of health care. The different RS units, particularly the emergency one, can also be used by medical teams or users through telephone, internet and fax. This regulatory process consists of technical and management knowledge so that the best response can be provided for a given need.<sup>3,7</sup>

Therefore, clinical attention and co-ordinated health care access provided by the different SUS health care services can be defined by the RS. On the other hand, consensus on clinical possibilities and available health care access based on the local sanitary situation and scientific evidence<sup>8</sup> should exist among the practitioners working in different medical units.

The Ministry of Health and National Council of Health Secretaries have adopted the term 'Clinical and Regulatory Protocols'(CRP)<sup>3</sup> for systematic orientations and practical results based on scientific evidence<sup>8</sup>, thus helping users, health care practitioners, and administrators make clinical and regulatory decisions for a given health issue. The steps for elaborating such CRPs involve selection of themes, synthesis of the evidence, formulation of recommendations, dissemination and implementation, review and up-dating, and finally, validation by experts, practitioners, users, and managers.<sup>8</sup>

In order to improve the local health primary care, two research projects are being currently developed by the University of São Paulo (USP) in co-operation with the Ribeirão Preto Municipal Health Secretary and financially supported by the Waldemar Barnsley Pessoa Foundation. These research projects are aimed to strengthen the link between specialised and primary care practitioners as well as to implement the RS. Clinical and regulatory protocols are one of the results most expected by the community.

The objective of this work is to present a methodology for elaborating clinical and regulatory protocols through scientific co-operation between university and health care system based on the model proposed for treatment of jaundice in adults and elderly.

## **Methods**

### **Selection of Themes for Elaborating Clinical and Regulatory Protocols**

The list of themes for elaborating clinical and regulatory protocols (CRPs) is based on either "mixed" or "authentic" health problems seen in the health care system and whose solution implies the use of different elements from the health care network and other social resources contingently. Therefore, an abdominal pain due to acute appendicitis is an authentic health problem that may be a theme for CRP, for the patient can be referred to a moderate-high complexity hospital depending on his or her health condition, which includes risks inherent to surgery and anaesthesia. On the other hand, domestic violence against women, children, or elderly are considered mixed health problems as they can be clinically and psychologically resolved by primary care or specialised practitioners. However, these mixed health problems should also be regulated by other services regarding citizenship and justice.

The themes are analysed and selected by primary care practitioners, matrix care teams, and a RS team. A matrix care team is formed by specialised health practitioners linked to the University of São Paulo who support primary care practitioners either in person or on-line. Those themes representing the most prevalent problems seen in health care network are

chosen by professionals from MHS and USP through workshops. Each theme is elaborated by one professional, preferably linked to the university, with participation of primary care practitioners and RS team.

### **Orientations for Elaborating the Clinical and Regulatory Protocols**

These CRPs should define the clinical dimension for each theme regarding the different elements of the health care network and also explain the reasons by which elective and emergency specialised services, moderately and highly complex medical exams, hospitalisation, and high-cost pharmacological aid should be provided. The protocol format should have a brief introduction of the theme, including clinical and laboratorial findings setting limits for each health care service. Flowcharts representing the most relevant clinical and regulatory interventions, including hyperlinks, will facilitate the use of the protocol by health care practitioners. Relevant observations can be annexed along with the bibliographic references. The guidelines used in the CRPs should be based on scientific evidence, always emphasising the recommendations stated by the World Health Organisation and Pan American Health Organisation, the systematic reviews produced by the Brazilian Cochrane Centre, and the PubMed citations.

The elaboration of CRPs may be carried out by the matrix care team or other professionals with scientific, clinical, and administrative knowledge under supervision of a technical group designated to follow up execution and methodology. The protocol content must reproduce the multidisciplinary and multiprofessional interventions taken to handle health-related problems and also be in tune with the public health policies and local health care network. Therefore, a CRP for an obese patient with backache, for example, should begin with initial attention to a series of measures agreed by family physician, orthopaedist, nurse, pharmacist, physical therapist, and nutritionist. If necessary, other health care services may be ordered through the same regulatory process.

The rationale for guiding the access to health care services is based on the primary care door, both in terms of elective needs and referral to other health providers.<sup>2, 3</sup> Specialised evaluations should be structured before being sent to RS team.<sup>5</sup> Low-complexity emergency needs can be addressed at primary care level, including those chronic cases that are being followed up and become acute, whereas the more severe cases have to be referred to the emergency medical centre according to the regulatory requirements.<sup>5, 7</sup>

The technical and regulatory components of the CRPs reflect the interaction of services (hospitals, health care units, ambulances) available in the community (i.e. Ribeirão Preto) considering professional capacity, technology, preventive and curative products, outpatient and inpatient settings, list of medicines, pathological and image exams, and number of inpatient beds, including the observation ones.

Clinically, CRP has its roots deriving from health problems such as signs (neck lump, bruised finger, blood in the urine, jaundice), symptoms (palpitation, chronic cough, chest pain, abdominal pain, toothache), or the disease itself (hypertension, diabetes mellitus, arthrosis). With regard to the preventive measures, CRPs take into account the recommendations adopted by the surveillance services as well as clinical and laboratory investigation for screening the most prevalent diseases according to age and gender.

### **Orientations for Validating, Divulging, and Revising the CRPs**

The CRPs are sent to primary care practitioners and RS team for evaluation and suggestions, which are then recorded and annexed. The initial suggestions are presented at validation workshops attended by members of the matrix care teams, RS team, university practitioners, and health care providers linked to SUS. Once validated, the CRPs are

organised into textbook and media for extensive distribution among all health care practitioners. The CRP revision is promoted by universities linked to MHS and services provided by the MHS itself.

### **Results**

Based on the MHS administrative planning and USP research goals, a CRP for treatment of jaundice in adults and elderly was elaborated according to methodology proposed and presented as follows.

## **Clinical and Regulatory Protocol for Obstructive Jaundice in Adults and Elderly**

### *Introduction and Reasons*

Jaundice patients seeking health care may present, in the majority of cases, four distinctive clinical scenarios. Patients with asymptomatic jaundice (i.e. absence of fever and pain) and clinically stable can have their evaluation and treatment scheduled. Those patients with palpable vesicle may present periampullary neoplasia and should be referred to tertiary hospital for digestive surgery, whereas the other patients should be submitted to biochemical and image exams to know whether the disease is to be clinically or surgically addressed.<sup>9, 10</sup> On the other hand, jaundice with pain and fever without neurological and cardiorespiratory involvement characterises a case of moderate emergency to be evaluated and treated by services of moderate complexity services, whereas the more severe cases of mental confusion and hypotension require clinical stabilisation, removal, and tertiary hospitalisation. Jaundice implies different syndromic, anatomical, and etiological diagnoses whose treatment may involve different health care settings and time, thus justifying the CRP elaboration.<sup>11, 12</sup>

### **Theoretical Considerations**

Jaundice is a clinical sign characterised by yellow skin, mucosa, and sclera resulting from an increased production of bilirubin, usually over 2.5 and 3.0 mg/dl. Bilirubin is produced by the degradation of complex proteins, mainly haemoglobin, and then is metabolised in the liver by hepatocytes in a process called capture. The non-conjugated bilirubin (indirect form) is conjugated within the hepatocytes, becoming more polarised and water-soluble (direct bilirubin). As a result, the conjugated bilirubin can be excreted through the biliary ducts.<sup>13</sup>

Therefore, hyperbilirubinemia and jaundice may occur by means of two mechanisms:

I – Increased production of bilirubin: haemolysis, formation of vulnerable red cells (thalassemia, anaemia), haematoma resorption, transfusion;

II – Decreased depuration of bilirubin

A – Hereditary defects: Dubin-Johnson's and Rotor's syndromes

B – Cholestasis:

1 – Hepatocellular injury: hepatitis (viral, drug-related), pregnancy, and sepsis.

2 – Biliary obstruction: biliary lithiasis, periampullary neoplasia, pancreatitis,

By knowing the physiological role of bilirubin and the determinants of its increase, jaundice can be defined as follows<sup>13</sup>:

- Pre-hepatic (production or capture)
- Hepatic (capture, conjugation and excretion)
- Post-hepatic (biliary flow)

Cholestasis is a condition in which bile cannot reach the duodenum due to problems related to hepatocytes excretion or obstruction of the flow between hepatocytes and ampulla

of Vater. Infectious contamination by stagnated bile and inflammation of the biliary ducts characterise a cholangitis.<sup>13, 14, 15, 16</sup>

### Primary Care Approach for Jaundice Adults and Elderly

- Differentiation of pre-hepatic and hepatic jaundice from the post-hepatic one
- Differentiation of mild inflammatory pictures (acute hepatitis, mild pancreatitis, and mild cholangitis) from the severe ones (severe pancreatitis, severe cholangitis, and severe acute liver failure).

In the majority of cases such a differentiation can be done through anamnesis and clinical exam, in addition to some other auxiliary exams available in all health care services.<sup>17</sup> This process allows patients to be etiologically diagnosed and optimally treated. The icteric patient seeking health care usually falls into the following four scenarios:

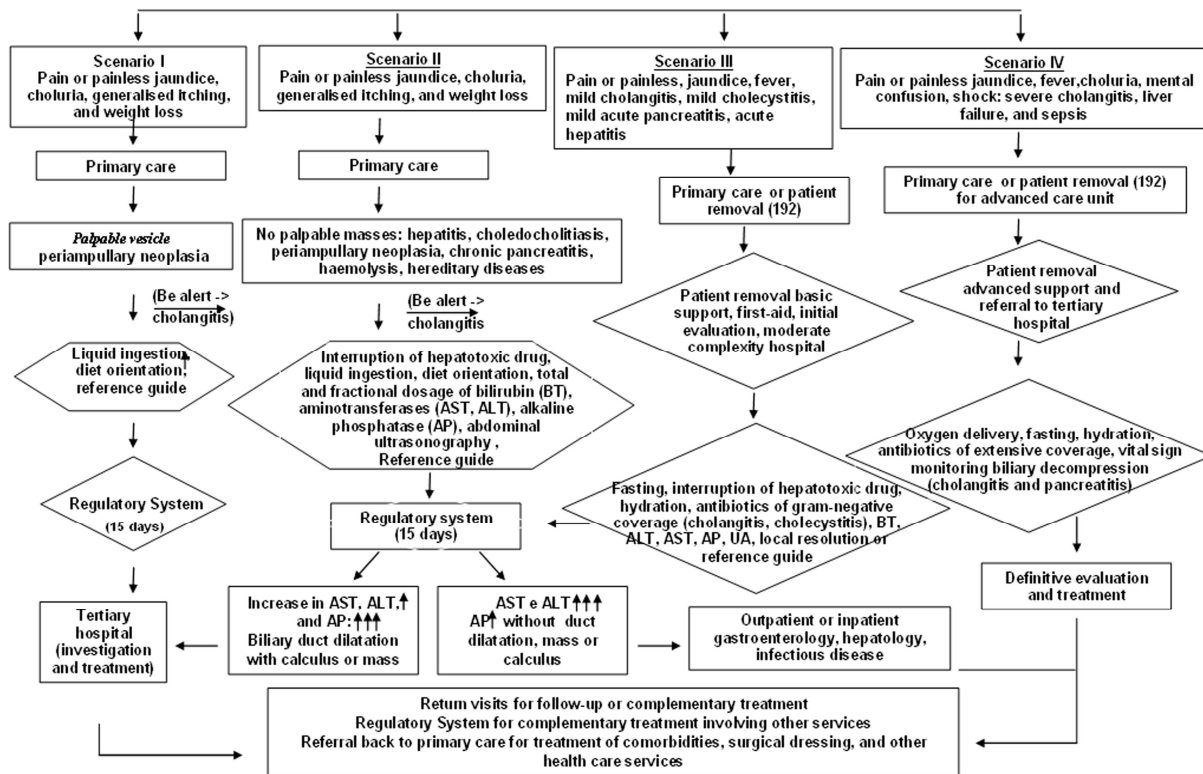


FIGURE 1 - Clinical and Regulatory Protocol for Jaundice in adults and elderly

## Scenario I

### *Clinical presentation*

- Painless jaundice, usually progressive, choloria, faecal acholia, generalised itching, and weight loss.
- Palpable vesicle (Courvoisier-Terrier sign)

### *Syndromic and Etiological Diagnosis*

- Extra-hepatic cholestasis, probably secondary to periampullary tumour. <sup>13, 17</sup>

### *Clinical and Regulatory Measures*

- Increased ingestion of fluids for keeping a minimum urinary loss of 0.5 ml/Kg/h (to prevent renal failure)
- Low-fat diet (to minimise the discomfort caused by fat ingestion and diarrhoea)
- itching control: (1<sup>st</sup> line) - Dexchlorpheniramine (4-16 mg a day in 2-4 divided doses); Hydroxyzine (25mg, 3 times a day); Cholestyramine (4-6g, 2 times a day and 30 min prior to meals, not to be taken concomitantly with other medications); (2<sup>nd</sup> line) - ursodesoxycolic acid (13-15 mg/Kg a day in, 2-3 divided doses after meals); Naltrexone (50 mg/day) <sup>13, 18</sup>
- The primary care physician fills out the referral order manually or electronically and sent it to the RS unit.
- The primary care physician alerts the patient to the possibility of cholangitis (a rare event): should this occurs, the patient must seek a health care unit or an emergency inpatient unit. If the patient is not able to do so, he or she must use the 192 emergency telephone network.
- The RS agent analyses the referral order and schedules the medical care in a tertiary hospital within 15 days.
- The patient can be informed on the date, time, and local as follows:
  - by telephone (RS agent or primary care unit)
  - by the community health worker
- Return visits or complementary treatments involving tertiary hospital should be scheduled by its administrative staff.
- The tertiary hospital team should referral the patient back to primary care unit and describes the treatment performed, including possible complementary treatment. Other comorbidities or treatment problems can be handled by the primary care practitioners, such as surgical wound dressings, mild pain management, and so on.
- Any other complementary treatment beyond the scope of primary or tertiary care should be requested by means of referral order to the RS team.

Complementary diagnostic and therapeutic investigations should be requested by the primary care physician by means of RS referral because the clinical evidence indicates cancer of the periampullary region (see Scenario I). In this case, the patient will be submitted to image and tumour markers examinations such as: digestive endoscopy, tomography, nuclear magnetic resonance and, possibly, endoscopic ultrasonography with biopsy. Moreover, the jaundice treatment may require biliary and digestive decompression via endoscopy or even major surgery, thence the demand for specialised practitioners and infra-structure. <sup>9</sup>

Communication between the several units of the health care network should be done by primary care practitioners and RS team, and not by the user, in order to assure full and effective health care for the patient. Therefore, there is no reason to refer an icteric patient presenting with palpable vesicle to be submitted to clinical and image exams only. In this

case, both patient and health care system have disadvantages. The former has his or her treatment delayed because the same exams would have to be repeated in the tertiary hospital due to the inherent pathological changes and patient's condition, and the latter would have to spend more resources.

It should also be emphasised that the users do not have to afford going to different health care units in order to make new appointments, exams, and procedures. Access to full treatment care must be assured by the regulatory system and health care services, and the patients must be informed on the date, time, and local of their appointments. Because of the technology currently available, one cannot accept that the users leave the health care units carrying consultation, exam, or procedure orders without even having access to treatment.

The access to health care services is not unidirectional. Once the health problem has been resolved, the patient should be referred back to the primary care unit so that other possible comorbidities or treatment-related problems can be addressed, such as surgical wound dressings and instructions on pain and nutritional management. If other complementary treatments beyond the scope of primary and tertiary care are required, then referral orders should be sent to the RS unit manually or electronically.



## Scenario II

### *Clinical presentation*

- Pain or painless jaundice associated or not with:
  - choluria, faecal acholia, anorexia, weight loss
  - alcohol ingestion, use of medications or hepatotoxic drugs
  - previous history of abdominal or biliary surgery
  - history of blood transfusion
  - signs of hepatopathy (palmar erythema, ascites, gynecomastia, testicular atrophy, vascular spiders, and collateral circulation).
  - hepatosplenomegaly

### *Syndromic Diagnosis*

- Differentiation of pre-hepatic and hepatic jaundice from the post-hepatic one

### *Probable Etiological Diagnoses*

- *Pre-hepatic causes:* excessive haemolysis (spherocytosis), ineffective erythropoiesis (thalassemia), and resorption of extensive haematomas.
- *Hepatic causes:*
  - Increase in non-conjugated bilirubin: Gilbert's syndrome, Crigler Najjar syndrome, use of drugs (Rifampicin)
  - Increase in conjugated bilirubin (intra-hepatic cholestasis):
    - viral hepatitis, alcohol-related hepatitis, autoimmune hepatitis
    - drug-related hepatitis (acetaminophen, penicillin, oral contraceptive, non-steroid anti-inflammatory drugs, tricyclic antidepressives)
    - hereditary diseases (haemochromatosis, Wilson's disease, Dubin-Johnson's syndrome, Rotor's syndrome)
    - systemic diseases (sarcoidosis, amyloidosis, tuberculosis, glycogen storage disease, celiac disease).
    - others (sepsis, prolonged parenteral nutrition, pregnancy).
- *Post-hepatic Causes (extra-hepatic cholestasis)*
  - Increase in conjugated bilirubin:
    - intrinsic obstruction (calculus, traumatic biliary injuries, parasites, cholangiocarcinoma, vesicular cancer, cryptosporidium in AIDS patients).
    - extrinsic obstruction (acute and chronic pancreatitis, pseudocyst, cancer of pancreas and duodenum).<sup>13, 16, 17</sup>

### *Clinical and Regulatory Measures*

- Increased ingestion of fluids for keeping diuresis above 0.5 ml/kg/h (to prevent renal failure)
- Low-fat diet (to minimise the discomfort caused by fat ingestion and diarrhoea)
- Interruption of drugs causing cholestasis.
- itching control: (1<sup>st</sup> line) - Dexchlorpheniramine (4-16 mg a day in 2-4 divided doses); Hydroxyzine (25mg, 3 times a day); Cholestyramine (4-6g, 2 times a day and 30 min prior to meals, not to be taken concomitantly with other medications); (2<sup>nd</sup> line) - ursodesoxycolic acid (13-15 mg/Kg a day in, 2-3 divided doses after meals); Naltrexone (50 mg/day)<sup>13, 18</sup>
- The primary care physician orders blood count with reticulocytes, total and fractional serum bilirubin levels (conjugated and non-conjugated),

aminotransferases (aspartate aminotransferase and alanina aminotransferase, respectively, AST and ALT), alkaline phosphatase (ALP), prothrombin time (PT), and abdominal ultrasonography;<sup>16, 19</sup>

- The primary care physician sends the RS team a referral order containing clinical information, laboratory exam results, and image exams.
- The primary care physician alerts the patient to the possibility of pain and fever; should this occur, the patient must seek a health care unit or an emergency inpatient unit. If the patient is not able to do so, he or she must use the 192 emergency telephone network.
- Based on the information received, the RS team can differentiate pre-hepatic jaundice and intra-hepatic cholestasis from extra-hepatic cholestasis. In the extra-hepatic cholestasis, alkaline phosphatase is predominantly increased compared to aminotransferase, and abdominal ultrasonography shows dilated biliary duct.<sup>13, 16, 19</sup>
- The RS physician has to schedule clinical gastroenterology or hepatology services for those cases of pre-hepatic jaundice and intra-hepatic cholestasis, whereas the cases of extra-hepatic cholestasis are referred to surgical gastroenterology within 15 days.
- The patient can be informed on the date, time, and local as follows:
  - by telephone (RS or primary care team)
  - by community health worker
- Return visits or complementary treatments involving tertiary hospital should be scheduled by its administrative staff.
- The tertiary hospital team should refer the patient back to primary care unit and describes the treatment performed, including possible complementary treatment. Other comorbidities or treatment problems can be handled by the primary care practitioners, such as surgical wound dressings, mild pain management, and so on.
- Any other complementary treatment beyond the scope of primary or tertiary care should be requested by means of referral order manually or electronic filled.

Clinical evaluation and routine exams, such as blood count, total and fractional serum bilirubin levels (conjugated and non-conjugated), aminotransferases (aspartate aminotransferase and alanina aminotransferase, respectively, AST and ALT), alkaline phosphatase, prothrombin time, and abdominal ultrasonography, all may be ordered by the primary care physician to distinguish the non-obstructive jaundice (clinical approach) from the obstructive jaundice (surgical approach) in almost 75% of the cases.<sup>16</sup>

In the intra-hepatic cholestasis due to toxic or ischemic injury, the aminotransferase level is generally ten times higher than the maximum values, whereas the bilirubin levels are only five times higher. In both intra-hepatic cholestasis due to viral or alcohol-related hepatitis and acute biliary obstruction, on the other hand, aminotransferase and bilirubin levels are, respectively, 5 and 10 times higher than their maximum values. Sometimes, the aminotransferase levels exceed the 10-time limit in the cases of viral hepatitis, whereas bilirubin levels can also exceed such a limit in the cases of acute biliary obstruction and alcohol-related hepatitis. Therefore, the RS team can refer the cases more adequately to specialised treatments based on the information obtained from such a differentiation, thus maximising the patient's time and saving health care resources.<sup>16, 19</sup>

The cases of pre-hepatic jaundice and intra-hepatic cholestasis should be referred to health care units where clinical support exists, including viral hepatitis tests, diagnostic markers for autoimmune diseases (protein electrophoresis, immunoglobulin dosages and anti-

mitochondrial antibodies, anti-smooth muscle, and anti-nucleus), and metabolic disorders (urinary copper excretion, ceruloplasmin, alpha-1 antitrypsin, and iron biochemistry, among others). On the other hand, patients with extra-hepatic cholestasis require specialised health care centres possessing image resources and practitioners experienced in invasive endoscopy and radiology as well as major surgeries. Also, chronic cholestasis may result in cirrhosis, which would require a liver transplantation consequently. In this case, the patient must be referred to a highly specialised centre with multidisciplinary and multiprofessional health teams.<sup>13, 16, 17, 19</sup>

### **Scenario III**

#### *Clinical Evaluation*

- Pain or painless jaundice and fever associated or not with:
  - history of biliary pain or biliary surgery
  - history of alcohol ingestion, use of medications or hepatotoxic drugs

#### *Differential Diagnosis*

- Mild cholangitis
- Acute hepatitis
- Acute cholecystitis
- Acute pancreatitis
- Hepatic abscess
- Pyelonephritis

#### *Clinical and Regulatory Measures*

- Fasting; hydration and fluid reposition by intravenous access in order to keep urinary loss above 0.5 ml/Kg/h
- Prescription of antithermic medications
- Contact with emergency medical regulation (telephone number 192)
- If the patient has to be removed, the emergency medical regulation send a mobile basic unit
- If diagnosis is uncertain, the patient must be referred to emergency outpatient service (first-aid unit) or moderate complexity hospital.
- Any other complementary diagnostic and treatment procedure beyond the scope of primary health care, emergency outpatient service, or moderate complexity hospital should be requested by means of referral orders to the RS unit be manually or electronically filled out.
- If the health problem is resolved in the health care settings already described above, the patient should be referred back to the primary care unit in order to have his or her possible comorbidities or treatment-related problems treated.

Icteric patients presenting with fever, but with no systemic compromise, can be kept in observation beds until final diagnosis. It is recommended that the patient has fasted and receive fluid reposition. Antithermic medications may be used if necessary. The patient is submitted to routine clinical exams, such as blood count, total and fractional serum bilirubin levels (conjugated and non-conjugated), aminotransferases (aspartate aminotransferase and alanina aminotransferase, respectively, AST and ALT), alkaline phosphatase, prothrombin time, amylase, urine exam, and abdominal ultrasonography. All these exams can help discriminate acute hepatitis and pyelonephritis (clinical approach) from mild cholangitis, acute cholecystitis, and acute biliary pancreatitis (clinical-surgical approach). Such a differentiation allows antibiotics with gram-negative coverage and anaerobic spectrum to be used in the cases of pyelonephritis, cholangitis, and acute cholecystitis. Moreover, such a patient can be treated in moderate complexity hospital or referred to specialised care services for concluding the treatment adequately. <sup>11, 12, 20</sup>

## Scenario IV

### *Clinical presentation*

- Pain or painless jaundice with fever, mental confusion, and hypotension associated or not with:
  - previous history of biliary pain or biliary surgery
  - history of alcohol ingestion or use of hepatotoxic drugs
  - signs of hepatopathy (palmar erythema, ascites, gynecomastia, testicular atrophy vascular spiders, collateral circulation).
  - hepatosplenomegaly

### *Differential Diagnosis*

- Severe cholangitis
- Severe acute liver failure (fulminant hepatitis)
- Severe acute pancreatitis
- Sepsis

### *Clinical and Regulatory Measures*

- Fasting; hydration and fluid reposition by intravenous peripheral access for restoring volemia
- Oxygen catheter or mask
- Urinary catheter
- Contact with emergency care services (telephone number 192)
- Patient must be removed by advanced care unit
- Patient must be referred to tertiary hospital
- Patient must be accommodated for clinical stabilisation or intensive care.
- If the health problem is resolved, the tertiary hospital team should referral the patient back to primary care unit and describes the treatment performed, including possible complementary treatment. Other comorbidities or treatment problems can be handled by the primary care practitioners, such as surgical wound dressings, mild pain management, and so on
- Any other complementary diagnostic and treatment procedure beyond the primary health care and specialised service should be requested by means of referral order to the RS unit be manually or electronically filled out.

The referral order for icteric patients presenting with systemic compromise and hemodynamic, respiratory and neurological dysfunctions, with or without fever, can be originated from either the primary health care unit or the patient's home. Such cases require initial clinical stabilising measures that can be implemented in both primary care and outpatient emergency units until referral to tertiary emergency hospital and its intensive therapy beds. It is recommended that the patient has fasted and receive fluid reposition. Antithermic medications may be used if necessary. The patient is submitted to routine clinical exams, such as blood count, total and fractional serum bilirubin levels (conjugated and non-conjugated), aminotransferases (aspartate aminotransferase and alanina aminotransferase, respectively, AST and ALT), alkaline phosphatase, prothrombin time, amylasis, urine exam, and abdominal ultrasonography. All these exams can help discriminate fulminant hepatic failure from severe cholangitis, which requires antibiotics with gram-negative coverage and anaerobic spectrum as well as emergency endoscopic biliary decompression.<sup>11, 12, 20</sup>

## Discussion

The Brazilian health care reality is far distant from the Unified Health System (SUS) presented by academic concepts and assured by laws, policies, rules, and decrees. Hospitals still play a relevant role as health care providers by assuming services which should be done by primary care units and the regulatory system. According to new concepts, norms, and governmental decrees, the primary health care represents the main door for clinical interventions, being expected to co-ordinate the access to all levels of treatment<sup>2,4</sup>, whereas the regulatory system (RS) should organise the access to different points of the health care network depending on the user's health needs.<sup>3</sup> Not only the inefficiency regarding the clinical interventions provided by the primary health care is known, but also the negative impact resulting from the excessive demand for outpatient and inpatient services.<sup>5,7,21</sup>

The old health care model is still robust. The clinical coverage provided by the primary health care in Ribeirão Preto is expected to reach approximately 90% of the population, but only 57.4% was reached in 2004. In the same year, the emergency health care represented 30.9% of the services compared to the expected rate of 15%, whereas specialised care services covered 155% of the population's health needs.<sup>5</sup> Within this same scenario, before the advent of the regulatory system in 1999, only 12.4% of the patients were admitted to the tertiary emergency university hospital, which was assuming all the functions of the non-inpatient emergency units, more frequently known as first aid care.<sup>7</sup> This finding reinforces the fact that specialised and emergency care services have been inadequately used. Another finding shows that approximately 55% of the patients seeking emergency care services could be treated in outpatient units, and 36% of these cases have not been followed up.<sup>21</sup> On the other hand, such a lack of efficiency in the health care system does not allow access to primary care services, which creates a vicious cycle.

This scenario has contributed to the local decision to amplify and strengthen the primary health care as well as to implement the regulatory system.<sup>5</sup> Despite the difficulties, such tasks have been performed by the Ribeirão Preto Municipal Health Secretary and the RS implementation process has also been discussed. It is expected that the health care services will be integrated by means of a health care network, since none of them has enough resources for solving competently the health problems faced by the population. This health care integration depends on changes in the health care boundaries and professional practices, in addition to co-operation.<sup>22</sup> Elaboration, validation, and diffusion of the clinical and regulatory protocols involving efforts from primary care practitioners, academics, and RS team can contribute to the development of the basis supporting health care network.

In general, the protocols existing in the literature address only clinical elements and are established to organise specific interventions, such as outpatient, inpatient, and intensive care. Therefore, the challenge resides not only in organising clinical and regulatory interventions through CRPs according to the themes listed earlier, but also in validating these CRPs in co-operation with primary care practitioners and managers in order to assure both integrity and equity.

The development of CRPs requires knowledge of scientific, operational, and administrative processes, consequently being a potential tool for qualifying the health care and improving the professionals' skills involved, in addition to facilitate the treatment access and to provide health care indices. The treatment of jaundice in adults and elderly illustrates different clinical situations ranging from mild to severe forms. Sometimes a delay is observed between the onset of symptoms and the clinical investigation/treatment, but there are cases that could be routinely evaluated but they are referred to tertiary investigation instead. It is not uncommon to see patients with jaundice, but presenting no pain nor fever, in tertiary emergency hospital to be submitted to CT investigation. On the other hand, there are patients

with severe cholangitis who have difficulties in having access to tertiary emergency hospital, besides cases of neoplasia in which the treatment begins after months since the onset of cholestasis symptoms.

In the majority of cases of obstructive jaundice, the primary care team diagnoses the patient as having hepatitis and refers the case to specialised care before performing adequate clinical evaluation and routine laboratory exams. At this level, the clinical evaluation is restarted and new routine exams are ordered, including unnecessary and even invasive ones, such as an endoscopic retrograde cholangiography with biliary drainage.<sup>23</sup> Image exams like the computer tomography may also be ordered, although such a procedure is likely to be performed again due to the quality or the time elapsed between the exam and the next clinical evaluation.

The disequilibrium between clinical and social conditions regarding some patients and the inability of undertaking the clinical evaluations, exams, and procedures imposed by a fragmented health care system, which lacks co-ordination and organisation, result in generalised dissatisfaction, treatment delay, and resource waste. Definition of primary care entry door, organised and regulated health care services, the possibility of professional practice changes, and co-operation for elaborating and validating the CRPs can, indeed, despite some authors<sup>24</sup> who think differently, make health care more rational and humane.

### **Conclusion**

By implementing these CRPs, it is expected that the access to health care system can be optimised and extended, including reduction of the opportunities lost at the user-system interface and development of a more co-operative health care network where the user's and practitioner's aspirations do not overcome the patient's health needs.

### **Bibliographical References**

1. BRASIL. Lei nº 8142/90, de 28 de dezembro de 1990. Dispõe sobre as condições para a promoção, proteção e recuperação da saúde, a organização e o funcionamento dos serviços correspondentes e dá outras providências. Brasília, 28 de dez 1990b. [www.pessoalsus.inf.br/Normas/Lei%208142\\_90.htm](http://www.pessoalsus.inf.br/Normas/Lei%208142_90.htm).
2. Starfield, B. Primary care: concept, evaluation and policy. New York, Oxford, University Press, 1992.
3. BRASIL. Ministério da Saúde. Portaria nº 399 de 22 de fevereiro de 2006. Divulga o Pacto pela Saúde 2006 – consolidação do SUS e aprova as diretrizes operacionais do referido Pacto. Diário Oficial da União, Brasília, 2006.
4. BRASIL. Ministério da Saúde. Portaria nº 648 de 28 de março de 2006. Institui a Política Nacional de Atenção Básica. Diário Oficial da União, Brasília, DF, mar.2006.
5. Ribeirão Preto, Plano Municipal de Saúde, 2005-2008, 2005 Disponível em: <<http://www.saude.ribeiraopreto.gov.br>.
6. BRASIL. Ministério da Saúde. Portaria no 1101/GM, de 12 de junho de 2002. Dispõe sobre os parâmetros de cobertura assistencial no âmbito do SUS. Brasília, 2002.
7. Santos JS, Scarpelini S, Brasileiro SLL, Ferraz CA, Dalloro MELV, Sá MFS. Avaliação do Modelo de Organização da Unidade de Emergência do HCFMRP-USP, Adotado como Referência, as Políticas Nacionais de Atenção às Urgências e de Humanização. Medicina, Ribeirão Preto SP.2003;36:498-515.
8. WHO. Guidelines for Who Guidelines 23 pg,2003
9. Frelove R, Walling AD. Pancreatic cancer: diagnosis and management. American Family Physician. 2006;73(3):485-92.
10. O'Connor KW, Snodgrass PJ, Swonder JE. A blinded prospective study comparing four current noninvasive approaches in the differential diagnosis of medical versus surgical jaundice. Gastroenterology. 1983;84:1498.
11. Wada K, Takada T, Kawarada Y, Nimura Y, Miura F, Yoshida M, Mayumi T, Strasberg S, Pitt HA, Gadacz TR, Büchlers MW, Belghit J, Santibanes E, Gouma DJ, Neuhaus H, Dervenis C, Fan ST, Chen MF, Kerl CG, Bornman PC, Hilvano SC, Kim SW, Liao KH, Kim MH. Diagnostic criteria and severity assessment of acute cholangitis: Tokyo guidelines. J Hepatobiliary Pancreat Surg. 2007;14:52-8.
12. Miura I, Takada T, Kawarada Y, Nimura Y, Wada K, Hirota M, Nagino M, Tsuyuguchi T, Mayumi T, Yoshida M, Strasberg SM, Pitt HA, Belghit J, Santibanes E, Gadacz TR, Gouma DJ, Fan ST, Chen MF, Padbury RT, Bornman PC, Kim SW, Liao LH, Belli G, Dervenis C. Flowcharts for the diagnosis and treatment of acute cholangitis and cholecystitis: Tokyo guidelines. J Hepatobiliary Pancreat Surg. 2007;14:27-34..
13. Lidofsky SD, Kobos R. Jaundice. In: Sleisenger and Fordtrant's Gastrointestinal and Liver Disease. 8ed. Philadelphia: Saunders Elsevier; 2006. p 301-16.
14. Beckingham IJ, Ryder SD: ABC of diseases of the liver, pancreas and biliary system: investigation of liver and biliary disease. BMJ. 2001; 322:33-36.
15. Ryder SD, Beckingham IJ: ABC of diseases of the liver, pancreas and biliary system: other causes of parenchymal liver disease. BMJ. 2001; 322:290-292.
16. Roche SP, Kobos R: Jaundice in the adult patient. Am Fam Physician. 2004; 69:299-304.
17. Merriman RB, Peters MG. Approach to the patient with jaundice. In: Yamada T Textbook of Gastroenterology. 4ed.Philadelphia: Lippincott Williams and Wilkins; 2003. p 911-28.



18. Bergasa NV. Medical palliation of the jaundiced patient with pruritus. *Gastroenterol Clin N Am.* 2006;35:113-23.
19. Giannini EG, Testa R, Savarino V. Liver enzyme alteration: a guide for clinicians. *Canadian Medical Association Journal.* 2005;172(3):
20. Takeda K, Takada T, Kawarada Y, Hirata K, Mayumi T, Yoshida M, Sekimoto M, Hirota M, Kimura Y, Isaji S, Koizumi M, Otsuki M Matsuno S. JPN guidelines for the management of acute pancreatitis: medical management of acute pancreatitis. *J Hepatobiliary Pancret Surg.* 2006;13:42-7.
21. Lovelho AF. Administração de serviços de saúde em urgências e emergências. *O mundo da saúde, São Paulo.* 2004; 28(2) 160-171.
22. Hartz ZMA, Contandriopolus AP. Integralidade da atenção e integração dos serviços de saúde: desafios para avaliar a implantação de “um sistema sem muros”. *Cad. Saúde Pública.* 2004;20(2):5331-36.
23. Santos JS, Salgado Jr W, Módena JLP, Brunaldi JE, Ceneviva R. Effect of Preoperative Endoscopic Decompression on Malignant Biliary Obstruction and Postoperative Infection. *Hepato-Gastroenterology*, v. 52, p. 45-47, 2005.
24. Puccini PT, Cecilio LCO. A humanização dos serviços e o direito à saúde. *Cad. Saúde Pública*, 2004; 20(5):1342-53.

No conflict of interest  
Financial support: Fundação Waldemar Barnsley Pessoa

---

**Corresponding author:**

José Sebastião dos Santos  
Faculdade de Medicina de Ribeirão Preto  
Departamento de Cirurgia e Anatomia  
14.049-900 - Ribeirão Preto  
[jsdsanto@fmrp.usp.br](mailto:jsdsanto@fmrp.usp.br)

---

How to cite the article:

Santos JS, Kemp R, Sankarankutty AK, Salgado Jr W, Souza FF, Teixeira, AC, Rosa GV, Castro e Silva O.

---

\* \* \*