

# Environmental & Energy Modeling

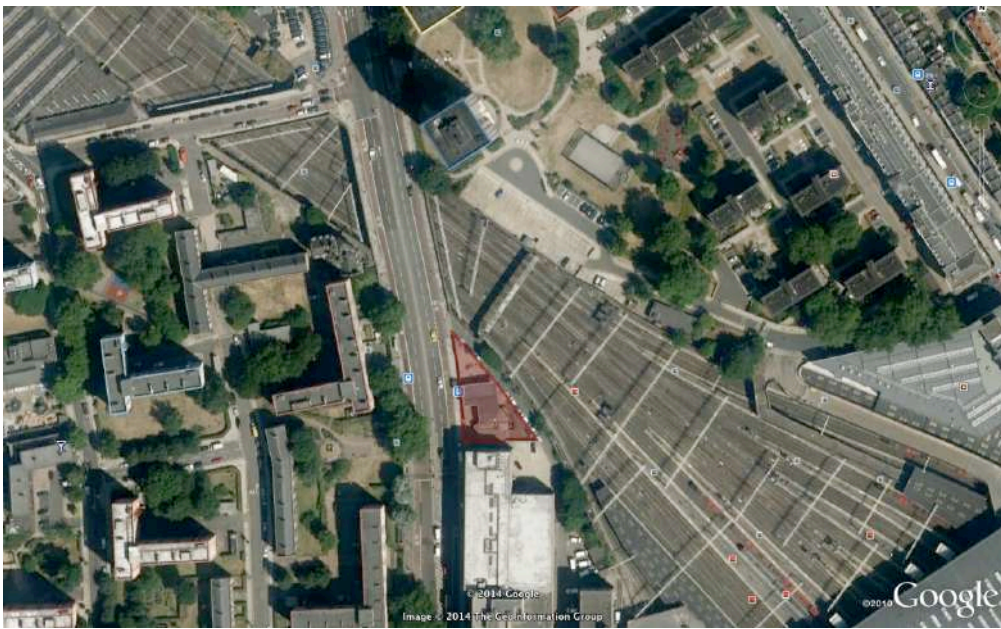
**Design Project 2 - Sites**

*Rosa Schiano-Phan & Nasser Golzari, Jan 2017*



- There are 5 sites each with different physical and cultural context offering different challenges of living and working conditions.
- SITES:
- 1- Euston/Camden : 141 Hampstead Road NW1 2BX
- 2- Euston Road / Warren street : Regents Place- Triton Square NW1 3HF
- 3- Paddington 1: 20 Lord Hills Road W2 6PD
- 4- Bayswater : 21 -23 Westbourne Grove W2 4UA
- 5- Honslow : 73 Hanworth Road





## **SITE 1**

### **Euston/Camden site**

### **141 Hampstead Road NW1 2BX**

- Situated between Euston and Camden Town a former fuel station adjacent to University College London most recent premises
- Formally the outskirts of London, Charles II's archers would train here
- 1700's 'New Road' as was previously known considered a bandits trail
- Under George IV Camden was considered a 'rural retreat'
- 2004 London plan designated Camden a 'Greater London Major Centre'

- The site is enriched by its surrounding UCL, railway and a number of social housing, high rise and high density urban residential blocks .







**SITE 2**  
**Euston Road / Warren street :**  
**Regents Place-**  
**Triton Square NW1 3HF**

- Area has a longstanding historical connection to medicine
- Situated West of Euston and North of Warren St, bordering Hampstead Rd.
- Owned by British Land and designed by Arup Associates
- Site formally housed Thames Television headquarters before demolition
- Euston Tower next door was the first High-rise office block in West London





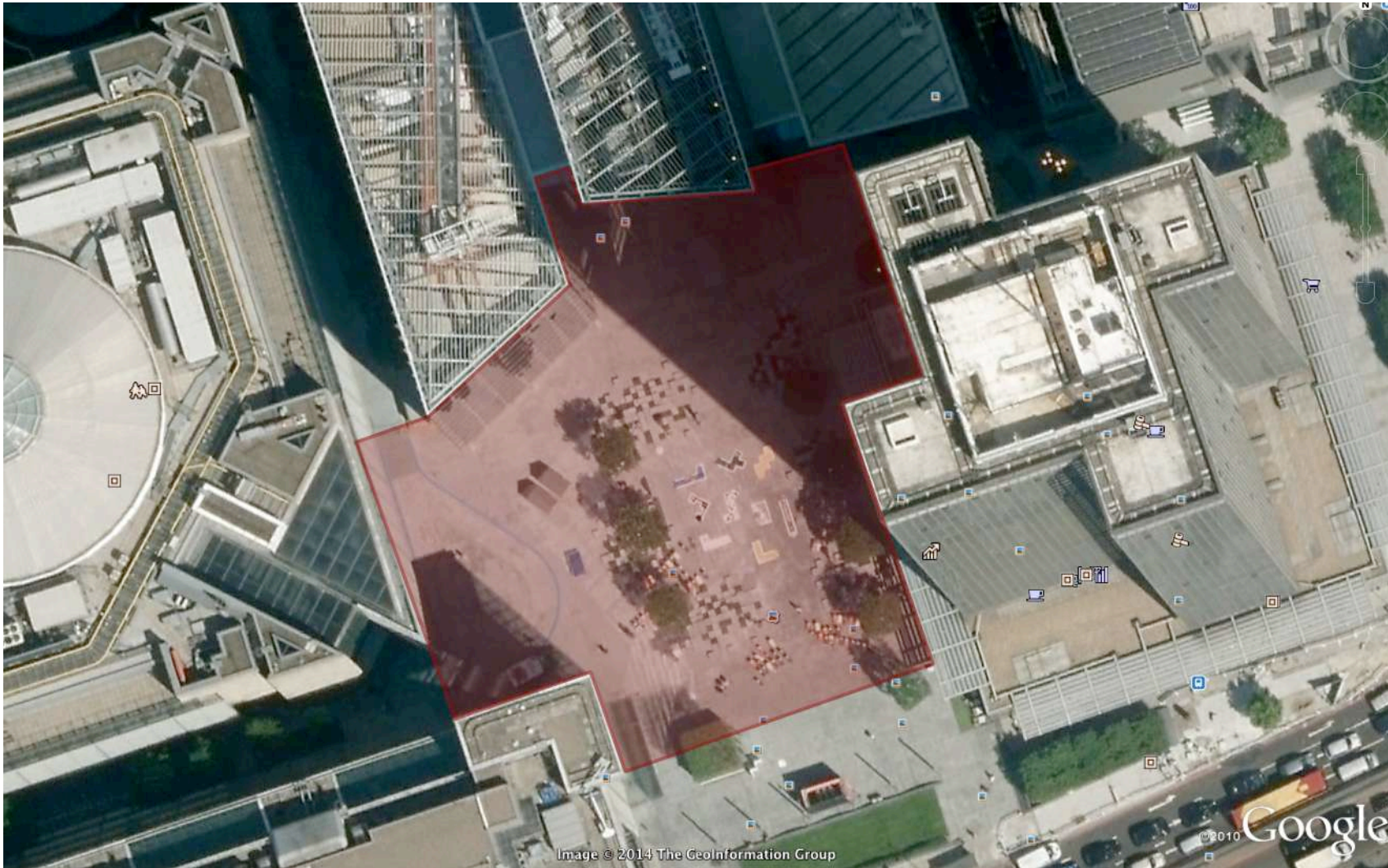


Image © 2014 The GeoInformation Group

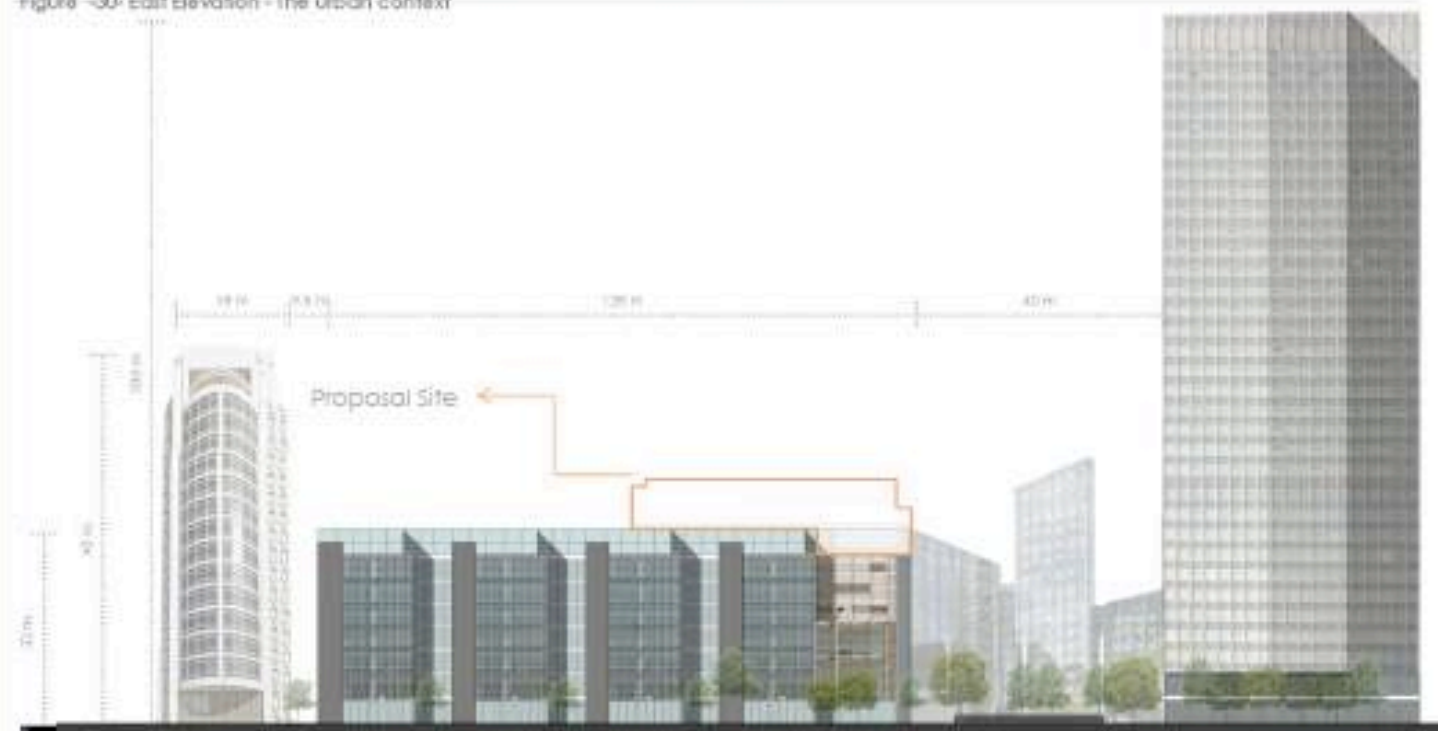
© 2010 Google







Figure -30- East Elevation - The urban context







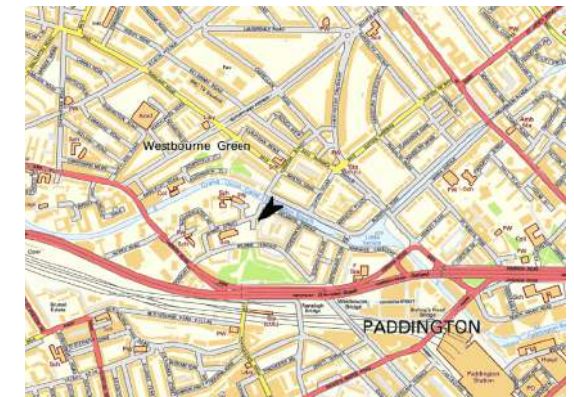




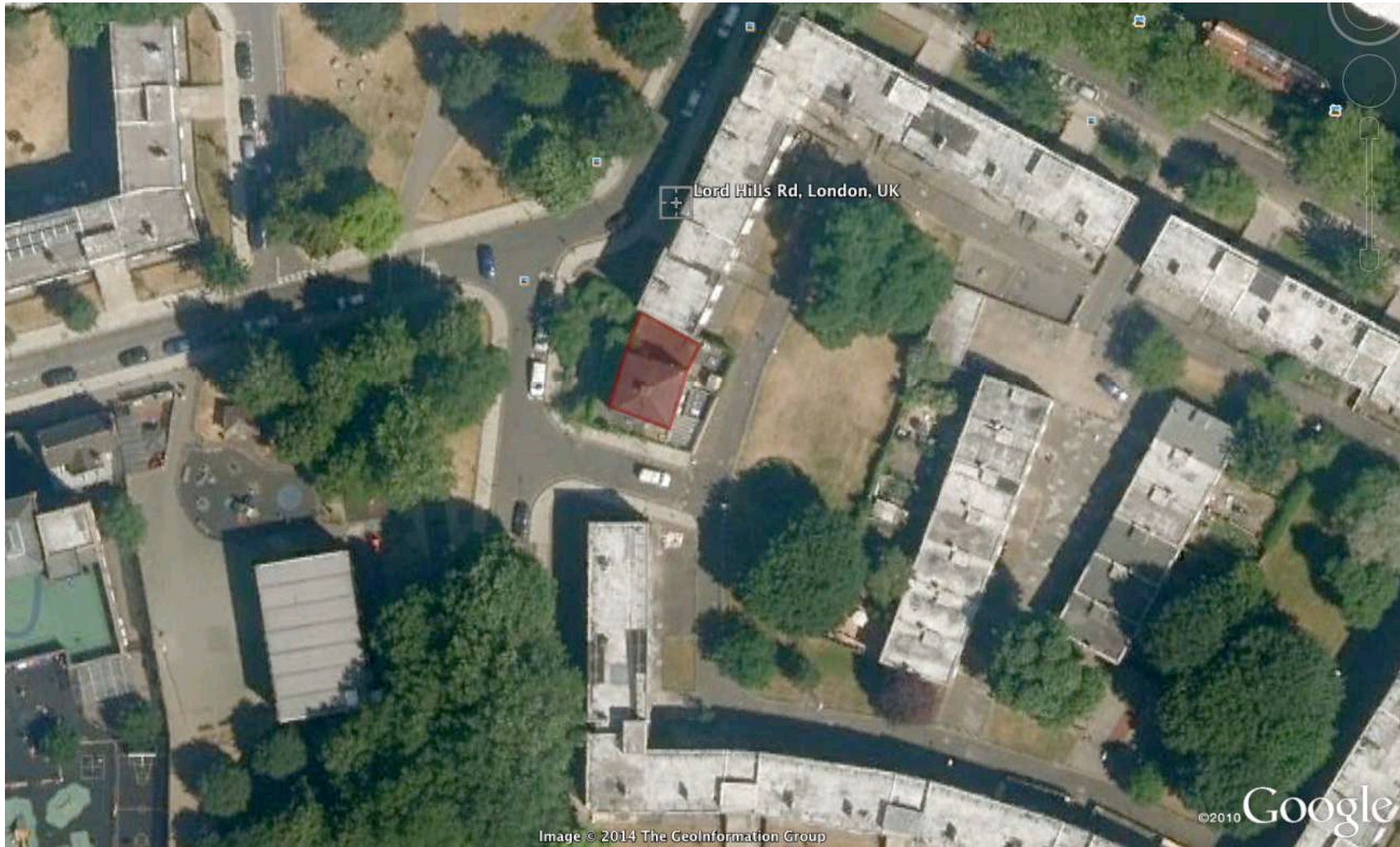


### 3- Paddington Site 1: 20 Lord Hills Road W2 6PD

- Free standing building due to for demolition . Situated between Royal Oak and Warwick Avenue
- Grand Union Canal alongside links Paddington Basin and Little Venice
- The West way overpass cut through the district in 1964 to relieve congestion
- The road wads built in accordance with the 1943 County of London Plan
- The estate surrounding the site is managed by Westminster Council
- Site is nearby multiple major transport interchanges and hubs







Lord Hills Rd, London, UK

©2010 Google

Image © 2014 The GeoInformation Group













#### 4- Bayswater site: 21 -23 Westbourne Grove W2 4UA

- Longstanding inhabitation as part of London, first recorded in 1222
  - 1950 Notoriety for ‘Rachmanism’ due to a violent slum landlord
  - 1950 Large influx of migrants, especially from the West Indies
  - 1966 Notting Hill Carnival takes place in the local area
  - 2004 London plan designated it a ‘Greater London major centre’
  - 2007 Rent increases rapidly forced out many older family businesses



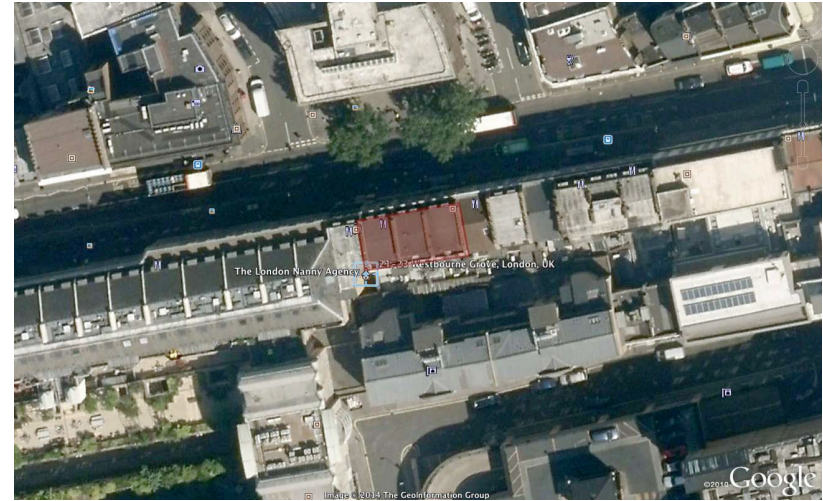












#### 4- Bayswater site: 21 -23 Westbourne Grove W2 4UA

- Longstanding inhabitation as part of London, first recorded in 1222
  - 1950 Notoriety for ‘Rachmanism’ due to a violent slum landlord
  - 1950 Large influx of migrants, especially from the West Indies
  - 1966 Notting Hill Carnival takes place in the local area
  - 2004 London plan designated it a ‘Greater London major centre’
  - 2007 Rent increases rapidly forced out many older family businesses





**73 Hanworth Road – Honslow , London TW3 1TT**

Located in west of London , close to Heathrow Airport with an extraordinary multi cultural mix.

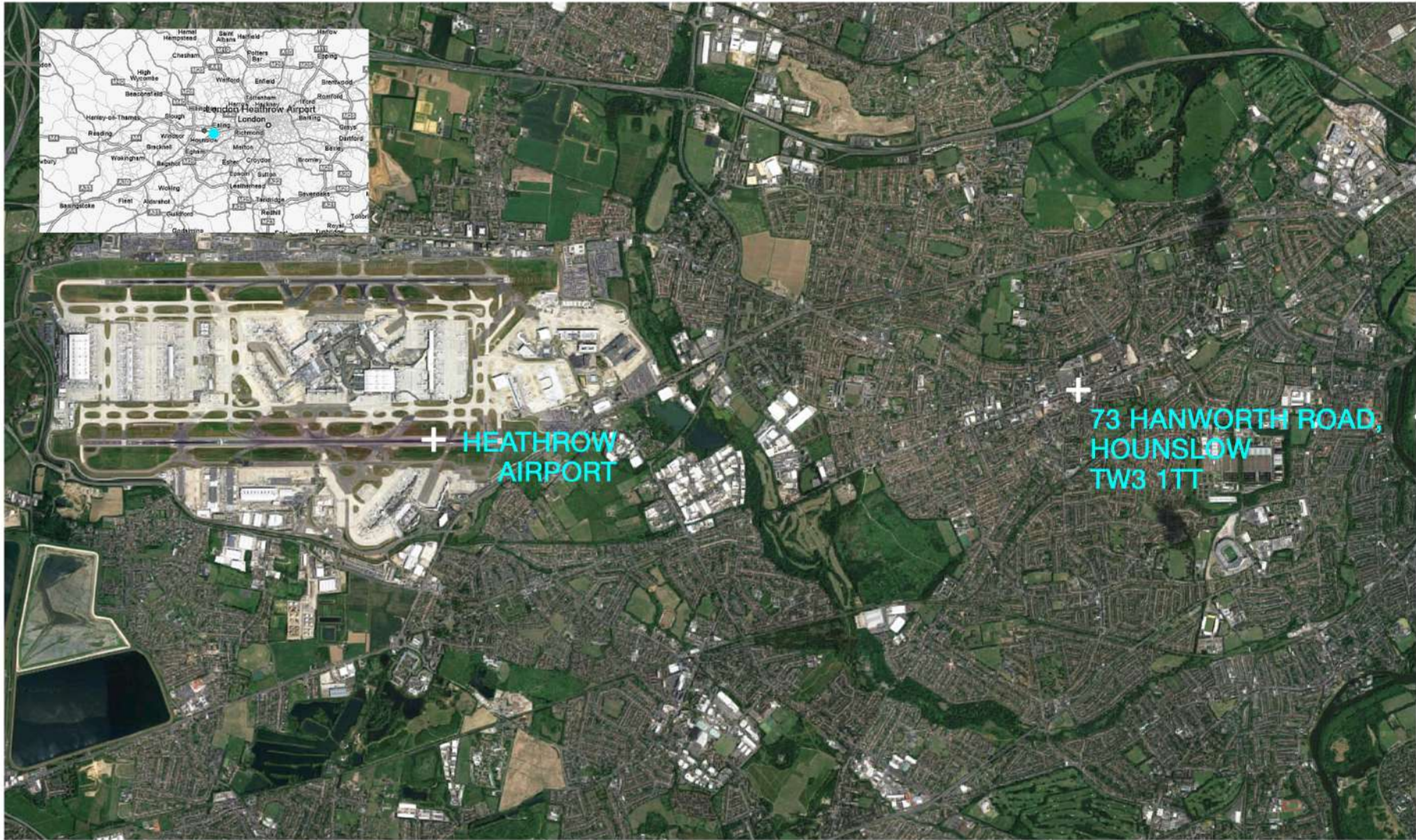
Hounslow is an economic hub within the west of the capital city; it has a large shopping centre which adjoins its high street and a large number of restaurants, cafés and small businesses ,many of which are associated with product assembly, marketing, telecommunications and London Heathrow Airport, which has a large number of businesses and public sector jobs in and around it to which the local population commute.

The settlement is also partially employed in the Commuter Belt with access between 35-45 minutes from most of Central London.

Hounslow's main shopping area is the high street, and the Civic Centre in nearby Lampton Road house Hounslow Council.

Historic Hounslow was for centuries a resting place for travellers on their way to central London. More recently, Hounslow Heath was the site of the UK's first civil airport, and Heathrow, just down the road, is a major employer.





+ HEATHROW AIRPORT

+ 73 HANWORTH ROAD,  
HOUNSLOW  
TW3 1TT





+ 73 HANWORTH ROAD,  
HOUNSLOW  
TW3 1TT





73 HANWORTH ROAD,  
HOUNSLOW  
TW3 1TT





Existing Ground Floor Plan  
Scale 1:200



Existing South Elevation  
Scale 1:200



Existing East Elevation  
Scale 1:200



Existing West Elevation  
Scale 1:200











New Look  
1-800-8912-8111

ISTAR

BAZAAR

JZ Lyncamobile

W & A Halwa Supermarket  
BAKERY/BAKED GOODS & GROCERIES

Qara  
Fashion Design & Tailoring  
ALTERATIONS & REPAIRS

D'ZYNAAS  
Hair & Beauty

INTERNET ACCESS  
ALL PHOTO COPY, SCANNING, PRINTING, LAMINATION  
LAPTOP REPAIRS & INSTALLATION - ACCESSORIES

INTERNET ACCESS  
LAPTOP REPAIRS

MOBILE SHOP

INTERNET ACCESS







Stitch & Fit  
DESIGNS & ALTERATIONS  
www.stitchandfit.co.uk  
02085725046

*Always & Forever*  
BRIDAL STUDIO

020 8570 4701

020 8570 4701

elm lodge  
estates

www.elmlodgeestates.com

020 8570 4701

Stitch & Fit  
DESIGNS & ALTERATIONS

020 8570 4701

www.stitchandfit.co.uk

020 8570 4701





