

Instituto de Química de São Carlos  
Universidade de São Paulo

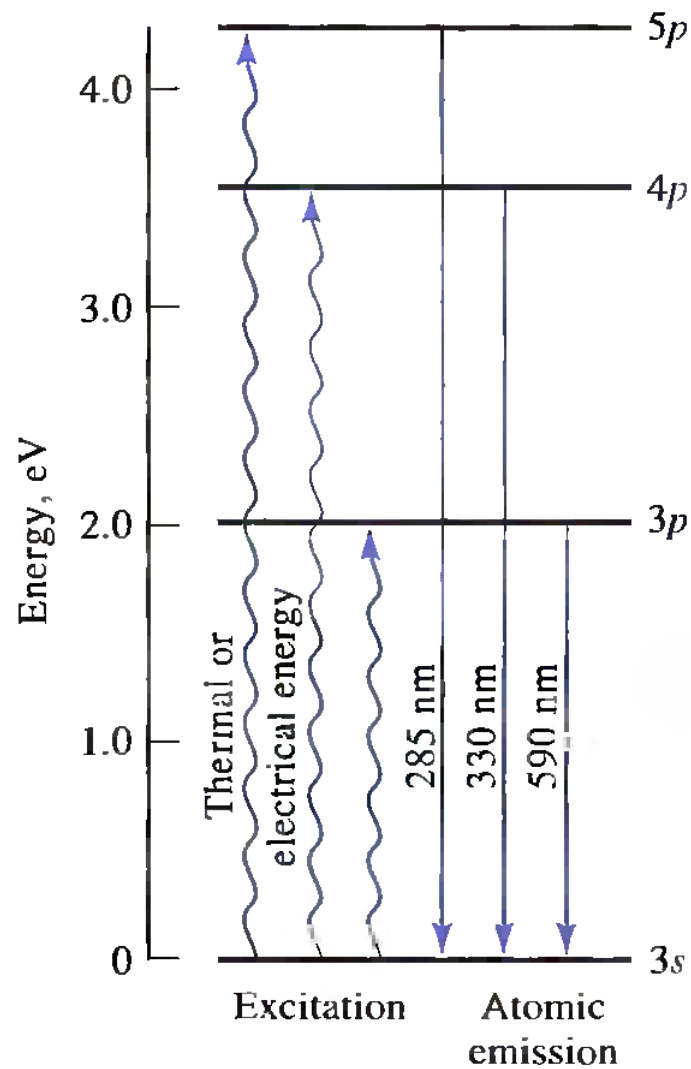
# Espectrometria de Emissão Óptica por Plasma Acoplado Indutivamente (ICP-OES): determinação de Ca, Fe e Cu em leite em pó

Disciplina: Análise Instrumental I

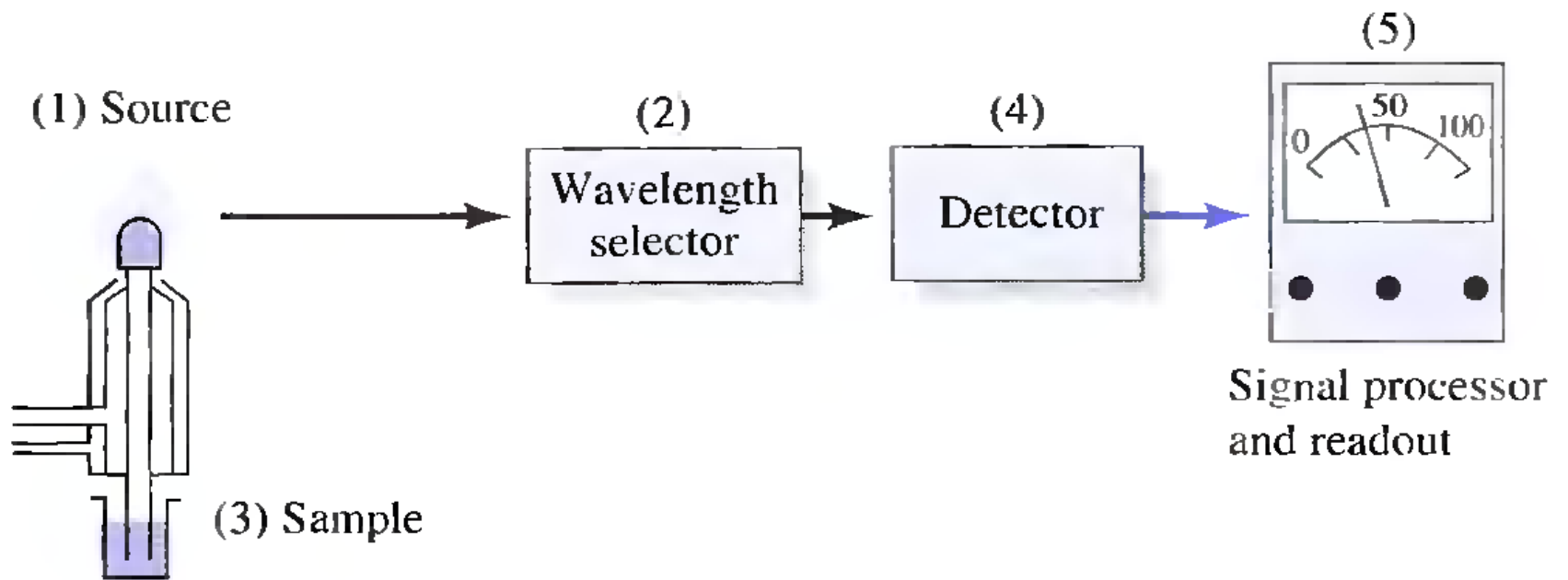
SQM0415

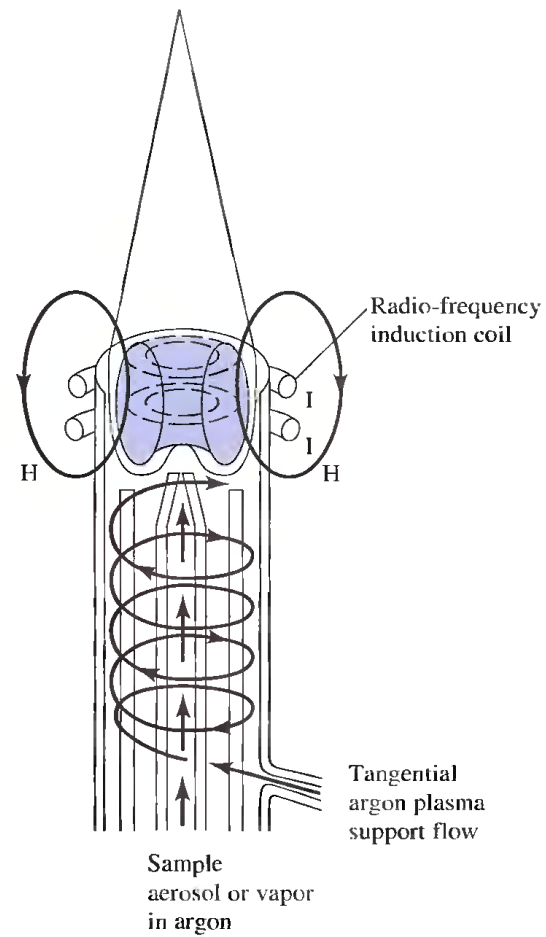


Fonte: <http://www.vocesabia.net/saude/como-e-feito-o-leite-em-po/>

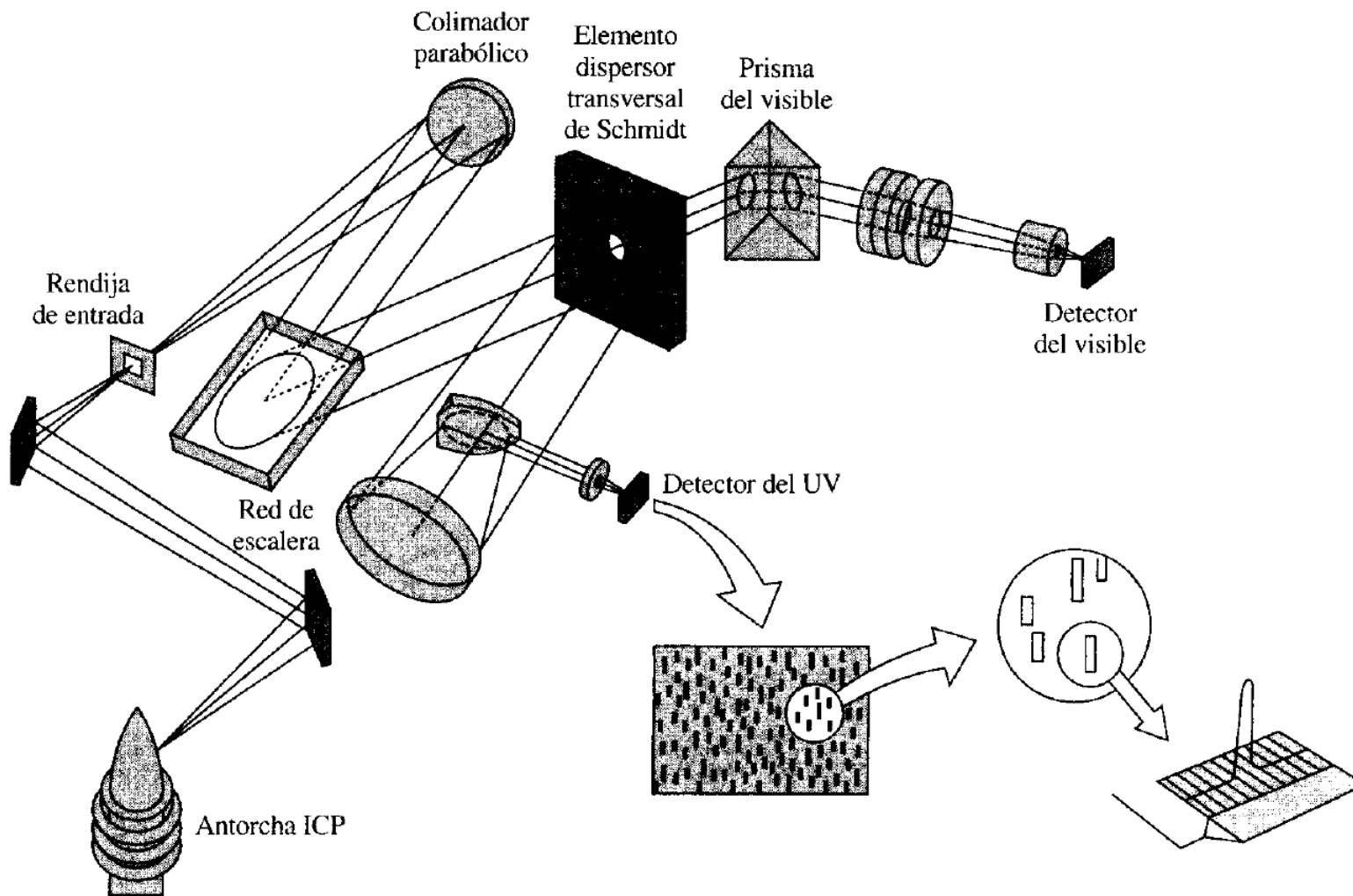


**Figure 28-1** Origin of three sodium emission lines.





**Figure 28-7** Inductively coupled plasma source.  
 (From V. A. Fassel, *Science*, **1978**, 202, 185.  
 Reprinted with permission. Copyright 1978 by the  
 American Association for the Advancement of  
 Science.)



**Figura 10-11.** Espectrómetro de escalera con dispositivos segmentados de acoplamiento de carga en serie. (De T. W. Barnard y col., *Anal. Chem.*, 1993, 65, 1232. Reproducción autorizada.)