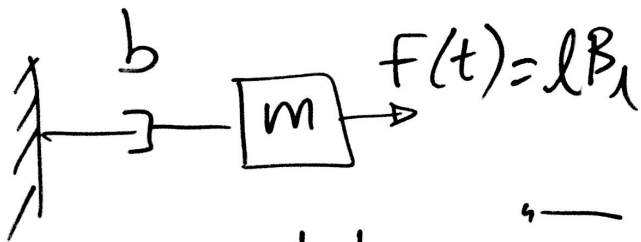
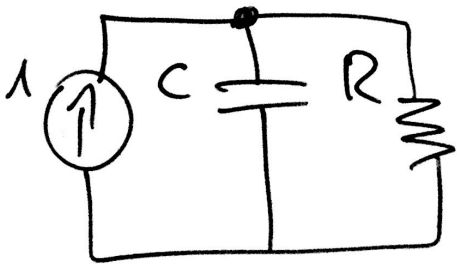


Sistema
mecânico:



Analogia elétrica



Lei dos no's:

$$V(CD + \frac{1}{R}) - v = 0$$

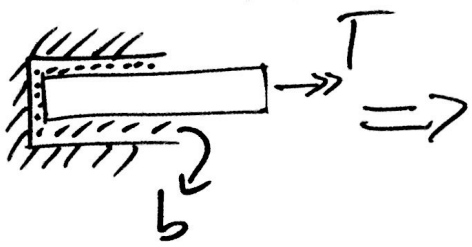
Logo:

$$l B_1 = (MD + b)v$$

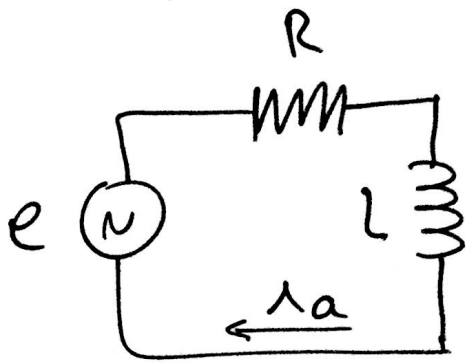
∴

$$M \ddot{x} + b \dot{x} = L B_1$$

Exercício 2)



Sist. mecânico



$$U = z\lambda$$

$$e = (LD + R)\lambda$$



$$J\ddot{\theta} + B\dot{\theta} = K\lambda_a$$