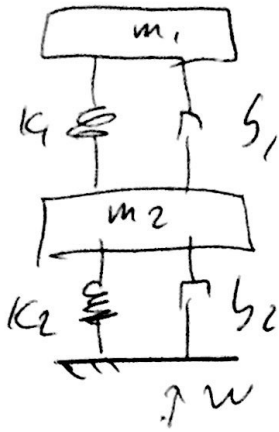
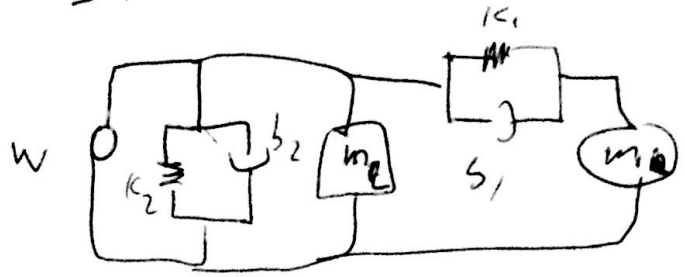


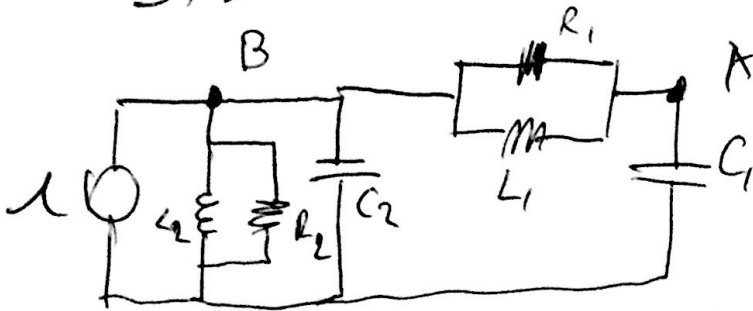
8)



Sist. mecânico



Sist. elétrica:



$$\textcircled{1} \quad V_A \left(C_1 D + \frac{1}{L_1 D} + \frac{1}{R_1} \right) - V_B \left(\frac{1}{R_1} + \frac{1}{L_1 D} \right) = 0$$

$$m_1 \ddot{x}_1 + b_1 \dot{x}_1 - \dot{x}_2 b_2 + x_1 k_1 - x_2 k_1 = 0$$

$$\textcircled{2} \quad V_2 \left(C_2 D + \frac{1}{L_2 D} + \frac{1}{b_2} + \frac{1}{L_2 D} \right) - V_A \left(\frac{1}{R_1} + \frac{1}{L_1 D} \right) = 1$$

$$m_2 \ddot{x}_2 - b_1 \dot{x}_1 + (b_1 + b_2) \dot{x}_2 - x_1 k_1 + (k_2 + k_1) x_2 = w$$